

$Pátios = 10 + 8 + 16.50 + 5.25 + 5.25 + 4 + 25 = 74 \text{ m}^2$
 $\text{Superfície edificada} = 14.50 \times 28 + 25 = 406 \text{ m}^2$
 $20\% - 14.50 = 81 - 14.50 = 66.50 \text{ m}^2$
 $2\% = 8 \text{ m}^2$
 $\text{ESCALERA} = 16 \text{ m}^2$

$Pátios = 5.25 + 5.25 + 16.50 + 4 + 5.25 + 5.25 + 46 = 87.50 \text{ m}^2$
 $\text{Superfície edificada} = 14.60 \times 31 = 456 \text{ m}^2$
 $20\% - 14.60 = 91 - 14.60 = 76.40 \text{ m}^2$
 $2\% = 9 \text{ m}^2$
 $\text{ESCALERA} = 16 \text{ m}^2$

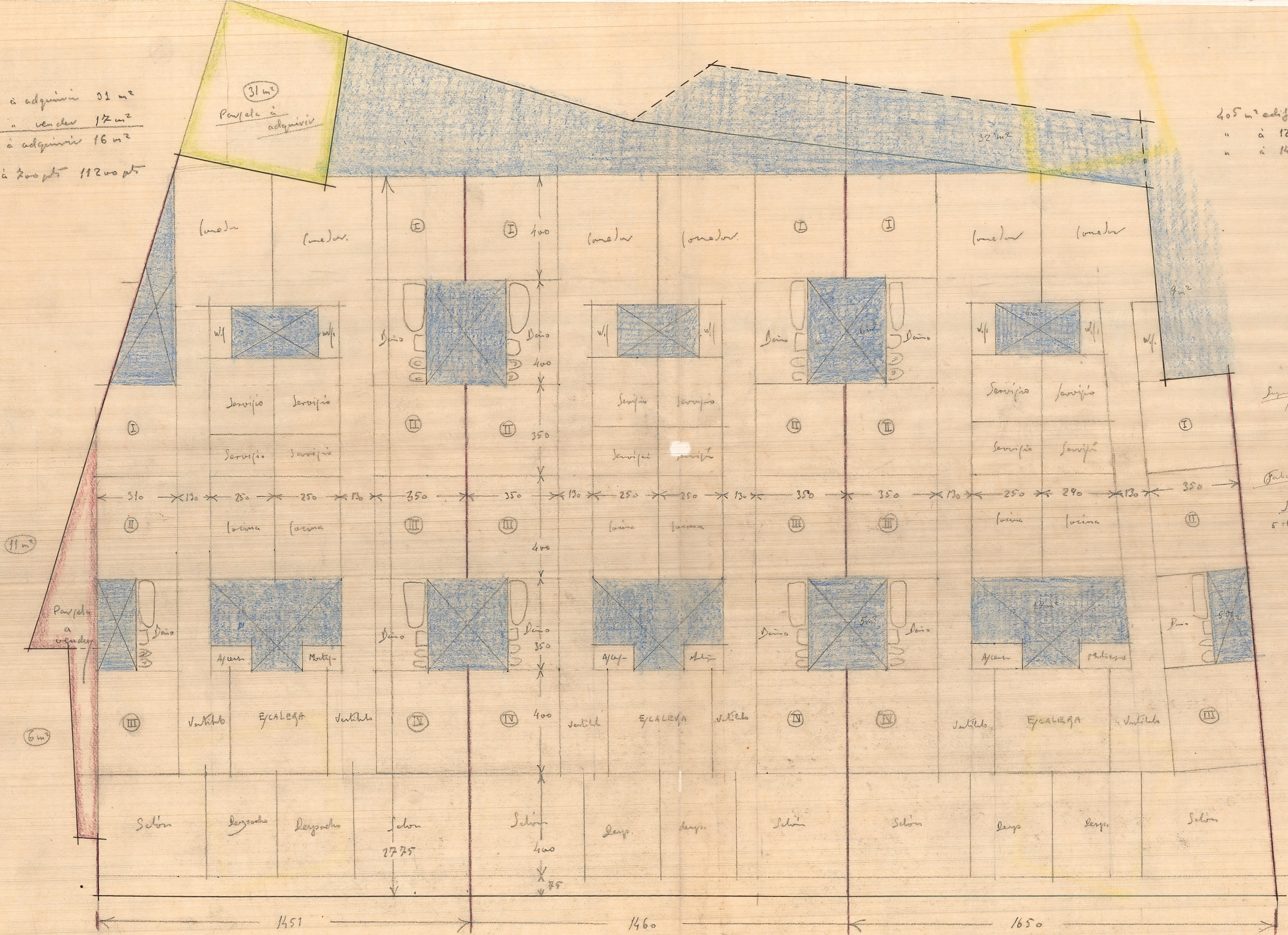
$Pátios = 38 + 12.50 + 5.25 + 5.25 + 21 + 5 = 87 \text{ m}^2$
 $\text{Superfície edificada} = 15 \times 31.50 = 473 \text{ m}^2$
 $20\% - 16.50 = 95.60 - 16.50 = 79 \text{ m}^2$
 $2\% = 9.50 \text{ m}^2$
 $\text{ESCALERA} = 16 \text{ m}^2$

ESCALA 1:100

Pavimento a adquirir 31 m²
 " " a vender 17 m²
 Puntos a adquirir 16 m²
 16 m² a 200 pts 11200 pts

31 m²
 Pavimento a adquirir

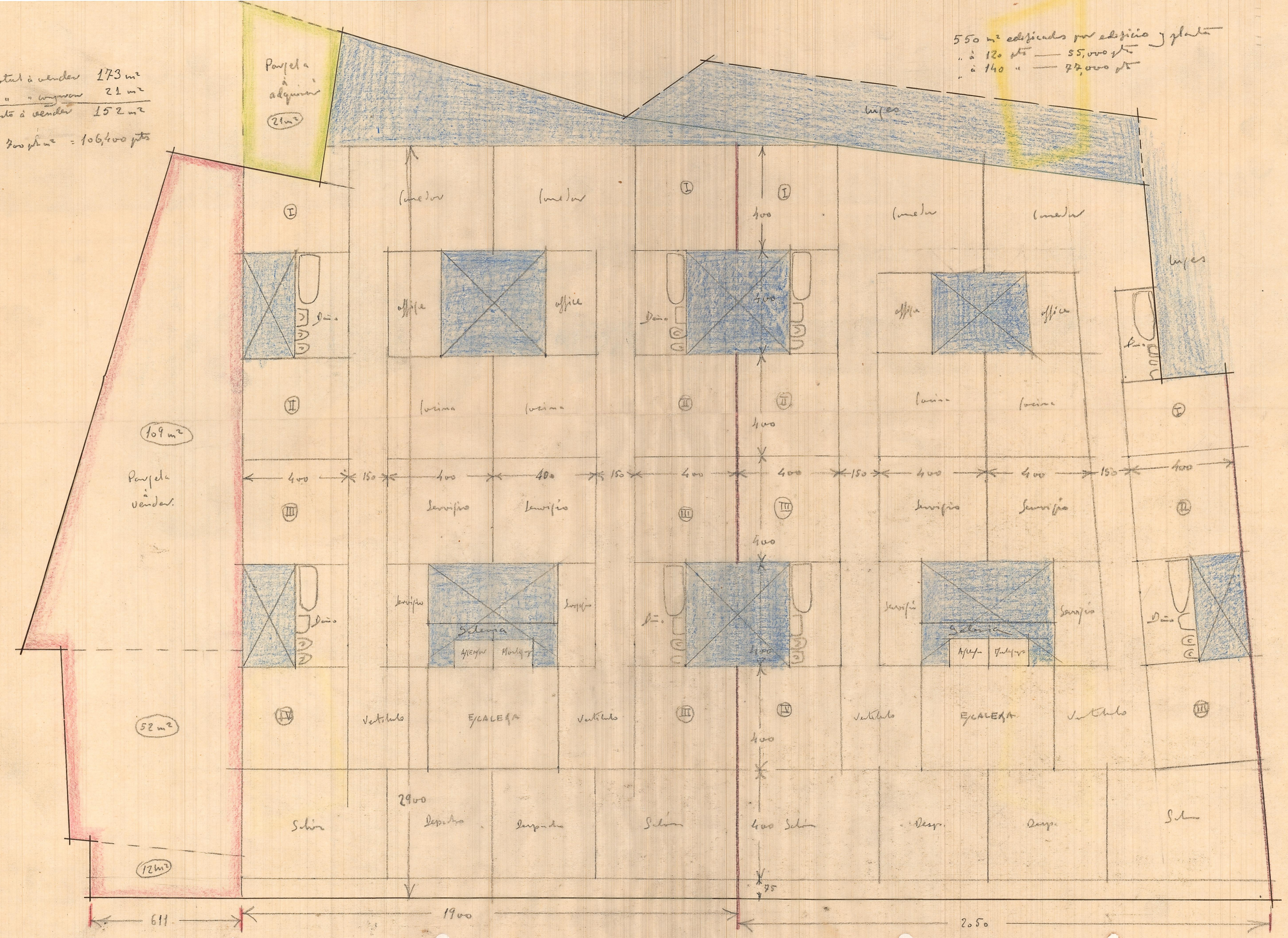
405 m² edificios por edificios y plantas
 " a 120 pts = 48600 pts
 " a 140 pts = 56700 pts



Superficie edificable
 $15'50 \times 20 = 310 m^2$
 $12 \times 11 = 132 m^2$
 $\frac{442}{20\%} = 8840 m^2$
 Fachadas = 16'50 m l.
 Superficie
 $5 + 17 + 5 + 9 + 6 + 6 + 32 = 80 m^2$

Total à vender 173 m²
 " " " " 21 m²
 Parte à vender 152 m²
 à 300 ptos = 45,600 ptos

550 m² edificadas por edificio y planta
 " à 120 ptos = 66,000 ptos
 " à 140 " = 77,000 ptos



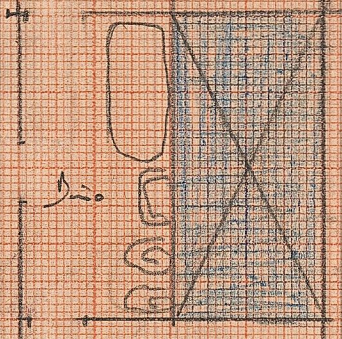
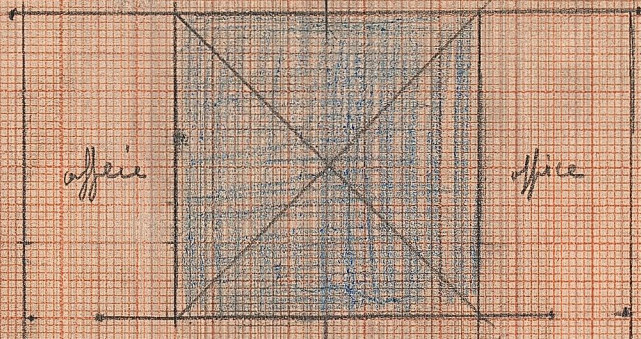
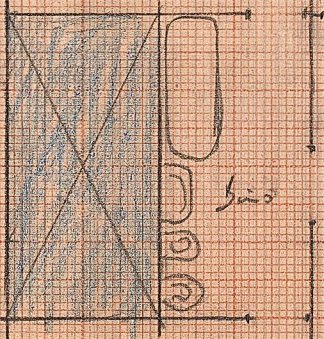
950

Don. (IV)

Cometa

Cometa

Don. (IV)



Don. (III)

Cometa

Cometa

Don. (III)



(II)

Don.

Don.

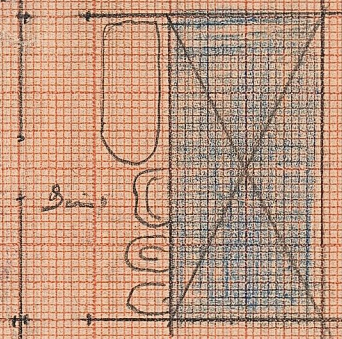
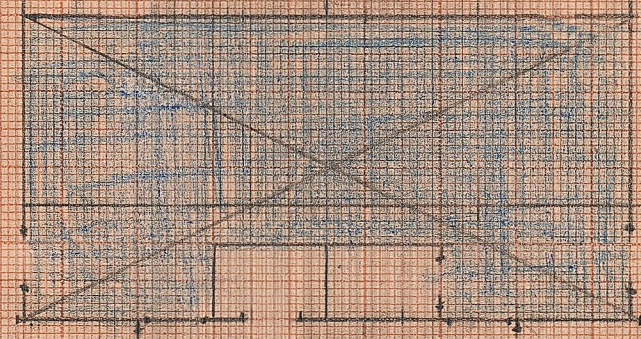
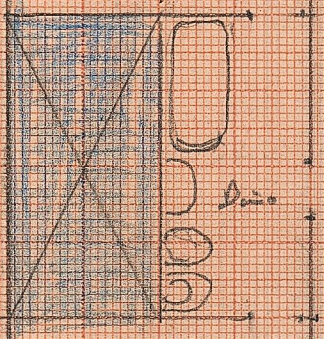
Don.

Don.

Cometa

Cometa

(II)



(I)

Don.

Cometa

ESCALERA

Cometa

Don.

(I)

Dep.

Dep.

Dep.

Dep.

27