

# Enhanced Simulink Induction Motor Model for Education and Maintenance Training

Manuel PINEDA-SANCHEZ

Vicente CLIMENTE-ALARCON

Martin RIERA-GUASP

Ruben PUCHE-PANADERO

and

Joan PONS-LLINARES

Instituto de Ingeniería Energética, Universitat Politècnica de València,  
Camino de Vera, s/n 46022 Valencia, Spain

## ABSTRACT

The training of technicians in maintenance requires the use of signals produced by faulty machines in different operating conditions, which are difficult to obtain either from the industry or through destructive testing. Some tasks in electricity and control courses can also be complemented by an interactive induction machine model having a wider internal parameter configuration. This paper presents a new analytical model of induction machine under fault, which is able to simulate induction machines with rotor asymmetries and eccentricity in different load conditions, both stationary and transient states and yielding magnitudes such as currents, speed and torque. This model is faster computationally than the traditional method of simulating induction machine faults based on the Finite Element Method and also than other analytical models due to the rapid calculation of the inductances. The model is presented in Simulink by Matlab for the comprehension and interactivity with the students or lecturers and also to allow the easy combination of the effect of the fault with external influences, studying their consequences on a determined load or control system. An associated diagnosis tool is also presented.

**Keywords:** Simulation, training, induction motor, Matlab/Simulink, interactive tools, maintenance, e- training.

## 1. INTRODUCTION

This paper presents an induction machine model developed in Simulink environment able to simulate the currents, speed and torque of a faulty induction motor for its application in education and training of maintenance techniques in predictive maintenance and fault diagnosis, and its associated analysis tool. On the contrary to the basic model included in the Simulink tool, the proposed model provides a wider machine internal parameters configuration which allows the simulation of the current feeding an induction machine suffering a rotor asymmetry and/or eccentricity, as well as its effect in torque and speed, both in stationary and transient state. In addition, its implementation in Simulink permits the easy combination of

the effect of the fault with external influences, or conversely, studying its effect on a determined load or control system.

Maintenance of induction motors is an issue of special concern in the industrial environment. Eccentricity under its various kinds is a common fault, and broken rotor bars and, more generally, rotor asymmetries, amount for around 10% of the failures in such equipment [1]. Although this fault does not cause an immediate collapse of the machine, its importance cannot be understated, since it propagates progressively towards the adjacent bars, leading to an irreversible failure. Moreover, large motors –being difficult to replace and involving the highest repair costs– started under high inertias are especially prone to suffer this type of fault, thus the need for having well trained maintenance personnel able to diagnose it in advance.

In the industrial environment, the most widely spread technique for the detection of rotor bar breakages and eccentricities is known as Motor Current Signature Analysis [2]-[4] and involves the identification of specific fault components in the spectrum of machine stator current waveform during stationary operation. This has some drawbacks, such as the difficulty of being applied to machines under unloaded condition or under unbalanced supply voltages, varying load or load torque oscillations [5]-[7]. Thus, recent methods have been developed to overcome these drawbacks, such as the demodulation using the Hilbert transform [8] or the study the transient processes of the machine and specifically, the startup transient. Due to the time-varying frequency spectrum of the startup current signal during the transient, modern time-frequency decomposition tools have been applied, such as wavelet transforms [9]-[12], Hilbert-Huang transform [13] and other Time Frequency Distributions (TFD) as, for instance, Wigner-Ville [14]-[16].

Furthermore, previous works have stated the Simulink induction motor model suitability for being successfully applied to undergraduate electric machinery courses, in order to introduce induction motor tests and to evaluate its steady state characteristics [17]. Nevertheless, others have indicated its shortages when it has been tried in more advanced tasks, which arise as the field of application of induction machines widens, such as machines with an arbitrary number of phases [18].

In addition, some authors have identified key features that tailored Simulink models should accomplish in order to be successfully applied in education and training of electrical equipment, such as simplicity [18] and interactivity [19], features that cannot be obtained from Finite Element Methods, the most accurate approach to asynchronous machine fault simulation.

Therefore, the authors propose a computationally fast and interactive induction motor model, based on Simulink, capable of simulating under variable load conditions, the instantaneous values of the current waveforms, torque and speed in stationary and transient state of a machine having rotor asymmetry and/or eccentricity for its application in education, training and e-training in conventional and new fault diagnosis techniques.

For these purpose, this paper will be structured as follows: section 2 establishes the theoretical background of the proposed model; section 3 introduces some of the fault frequency components which should be correctly simulated and section 4 shows examples of its application in maintenance training. Finally, section 5 renders the conclusions.

## 2. THE UPV MODEL BLOCK

The new analytical model of induction machine developed to be able of simulating a machine suffering a rotor asymmetry is based on the following equations:

### System equations

In the general case (that is, even under fault conditions like inter-turn short circuits or broken bars), the following equation system can be written for an induction machine with  $m$  stator and  $n$  rotor phases:

$$[U_s] = [R_s][I_s] + \frac{d[\Psi_s]}{dt} \quad (1)$$

$$[0] = [R_r][I_r] + \frac{d[\Psi_r]}{dt} \quad (2)$$

$$[\Psi_s] = [L_{ss}][I_s] + [L_{sr}][I_r] \quad (3)$$

$$[\Psi_r] = [L_{sr}]^T [I_s] + [L_{rr}][I_r] \quad (4)$$

$$[U_s] = [u_{s1} \ u_{s2} \ \dots \ u_{sm}]^T \quad (5)$$

$$[I_s] = [i_{s1} \ i_{s2} \ \dots \ i_{sm}]^T \quad (6)$$

$$[I_r] = [i_{r1} \ i_{r2} \ \dots \ i_{rn}]^T \quad (7)$$

where  $[U]$  is the voltage matrix,  $[I]$  is the current matrix,  $[R]$  is the resistance matrix,  $[\Psi]$  is the flux linkage matrix and  $[L]$  is the matrix of inductances. Subscripts  $s$  and  $r$  are assigned to the stator and rotor. The mechanical equations are:

$$T_e = [I_s]^T \frac{\partial [L_{sr}]}{\partial \theta} [I_r] \quad (8)$$

$$T_e - T_L = J \frac{d\Omega}{dt} = J \frac{d^2\theta}{dt^2} \quad (9)$$

where  $T_e$  is the electromechanical torque of the machine,  $T_L$  is the load torque,  $J$  is the rotor inertia,  $\Omega$  is the mechanical speed and  $\theta$  is the mechanical angle.

In order to solve Eq. (3), (4) and (8), self and mutual phase inductance matrices must be obtained. Due to the presence of the derivatives in Eq. (1) and (2), this computation should be very accurate (especially, if different fault conditions are to be detected and diagnosed in a sure way). Consequently, the model presented in this paper takes into account the actual position and current of every conductor in the airgap of the machine during the inductances calculation process. End turn and slot leakage inductances need to be pre-calculated, and are treated as constants in Eq. (3) and (4), as usual in the technical literature and also done, for instance in [20]-[21].

### Proposed method for computing the mutual inductance between two phases via the discrete circular convolutions and FFT

The inductance between two phases, A and B, is calculated in this paper through the following process:

The flux linkage of an arbitrary phase can be expressed very easily as the sum of the yoke flux at all the yoke sections corresponding to the angular positions of its conductors.

- 1) The air gap MMF,  $F_A(\varphi)$ , of phase A, fed with a unit current, is obtained, starting from the conductor MMF.
- 2) The yoke flux (Fig. 1) produced by  $F_A(\varphi)$  is calculated as in [22].
- 3) Flux linkage of phase B due to the yoke flux of phase A is determined, which corresponds to the mutual inductance between the phases. (The phase magnetizing self-inductance is obtained when B=A).

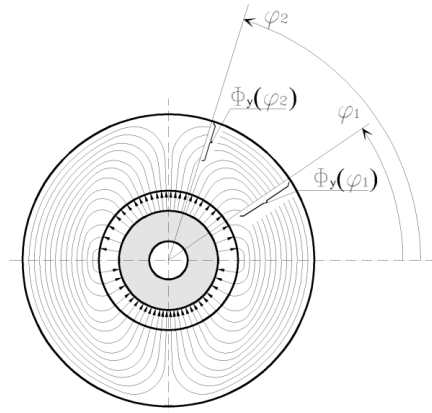


Fig. 1. Yoke flux generated by a sinusoidal distribution of air gap MMF, and its value at two different angular coordinates.

The use of the yoke flux has two key advantages. The first one is that it has a clear physical meaning and matches very well the use of the conductor as the basic winding unit. The great advantages of using the conductor instead of the coil, especially for irregular windings (e. g., fault conditions), were already strongly emphasized by [23]. And secondly, the yoke flux produced by a phase can be obtained very quickly by means of a circular convolution solved via FFT.

It must be underlined that not only step 2 (yoke flux), but all the three process steps listed above, despite being very different from a physical point of view, can be treated with the same mathematical tool: a circular convolution, computed via the

FFT. In summary, the mutual inductance of two phases, with arbitrary winding layout, can be obtained for each relative angular position between them in an extremely fast way with a single computation, which involves the FFTs of three discrete sequences: the conductor distributions for phases A and B, and the yoke flux generated by a single conductor, as presented in [24].

### 3. HARMONICS SHOWING FAULTS

The most used method for diagnosing rotor asymmetries is the current signature analysis (MCSA); this approach is based in the detection of harmonics with characteristic frequencies into the spectrum of the stator current in steady state regime.

The two main frequency components often traced for the diagnosis of rotor asymmetries appear during stationary operation as sidebands of the main current harmonic and are known as *lower sideband harmonic* (LSH) and *upper sideband harmonic* (USH). Their frequencies  $f_{sb}$  can be calculated using Eq. (10) ( $s$ =slip and  $f$ =supply frequency) [2].

$$f_{sb} = (1 \pm 2 \cdot s) \cdot f \quad (10)$$

The frequencies of these components are a particular case of the general expressions of the components amplified by the fault, given by Eq. (11) and (12) [25-26].

$$f_b = \left( \frac{k}{p} (1-s) \pm s \right) \cdot f \quad \frac{k}{p} = 1, 3, 5, \dots \quad (11)$$

$$f_b = (1 \pm 2 \cdot k \cdot s) \cdot f \quad k = 1, 2, 3, \dots \quad (12)$$

Furthermore, expressions for the calculation of the characteristic frequencies of the components introduced by static or dynamic eccentricities have been proposed by several authors [27]. Usually both kinds of eccentricity coexist, yielding low frequency components that appear near the fundamental [28]. Those frequencies can be computed by Eq. (13), where  $f_r$  is the frequency of rotation of the rotor.

$$f_{ecc} = \left[ \left( 1 + m \left( \frac{1-s}{p} \right) \right) \right] \cdot f \quad m = \pm 1, \pm 2, \pm 3, \dots \quad (13)$$

The characteristic fault-related frequencies given by these expressions are constant during stationary operation. However, during the startup transient they evolve in a particular way, as the slip  $s$  varies from a value equal to 1, when the machine is connected, to a value near to 0 (steady-state). This evolution creates characteristic pattern whose detection is the base of new diagnosis methods recently developed. These methods use time-frequency signal analysis techniques for revealing the characteristic patterns produced by the fault components under transient conditions [10]-[16].

Since the electrical and mechanical magnitudes computed by the proposed model contains all the fault components, it can be used either for training purpose with conventional permanent based diagnostic techniques as well as for teaching and training with the new transient based diagnostic approaches.

Table 1 characterizes the evolution of the main frequency components amplified by the rotor asymmetry for a two pole pair motor from the connection instant ( $s=1$ ) to the steady state, assuming ideal unloaded condition ( $s=0$ ), according to (11). Using the “+” sign; these components have positive initial frequencies at startup. In these cases, their frequencies increase from the fundamental frequency value up to their final steady-state value (direct evolution).

TABLE 1  
HIGH FREQUENCY COMPONENTS AMPLIFIED BY THE ASYMMETRY ACCORDING TO EQ. (11) (DIRECT EVOLUTION).

	$k/p$	$f \cdot \left( \frac{k}{p} \cdot (1-s) + s \right)$	$f_b(s=1)Hz$	$f_b(s=0)Hz$
LSH+S 150	3	$f(3-2 \cdot s)$	50	150
LSH+S 250	5	$f(5-4 \cdot s)$	50	250
LSH+S 350	7	$f(7-6 \cdot s)$	50	350

Table 2 presents the lower sideband harmonics whose absolute frequency value decreases at first, falling progressively to zero and increases again until reaching its steady state frequency.

TABLE 2  
HIGH FREQUENCY COMPONENTS AMPLIFIED BY THE ASYMMETRY ACCORDING TO EQ. (11) (INDIRECT EVOLUTION).

	$k/p$	$f \cdot \left( \frac{k}{p} \cdot (1-s) - s \right)$	$f_b(s=1)Hz$	$f_b(s=0)Hz$
LSH 50	1	$f(1-2 \cdot s)$	-50	50
LSH-S 150	3	$f(3-4 \cdot s)$	-50	150
LSH-S 250	5	$f(5-6 \cdot s)$	-50	250

Table 3 shows the evolution during startup of the main components introduced by a mixed eccentricity fault for a two pole pair machine, according to Eq. (13):

TABLE 3  
MAIN ECCENTRICITY COMPONENTS ACCORDING TO EQ. (13) IN HZ

Component	$m$	Initial frequency value (connection, $s=1$ )	Final frequency value (steady-state, $s=0$ )
EC 25	-1	50	25
EC 75	1	50	75
EC 100	2	50	100

### 4. CLASSROOM EXAMPLES

This section shows the ability of the developed model for including in the computed signals the fault components theoretically predicted, and therefore, enabling for the experimentation of different diagnostic approaches.

Along the model, a diagnosis module in Simulink has been programmed, in order to accomplish the desired interactivity with the students. This module calls the needed MATLAB functions and offers a user-friendly interface to input the parameters required to adjust some of the analysis tools.

In order to show some of the capabilities of these tools, two particular cases in maintenance practices on induction motors follow:

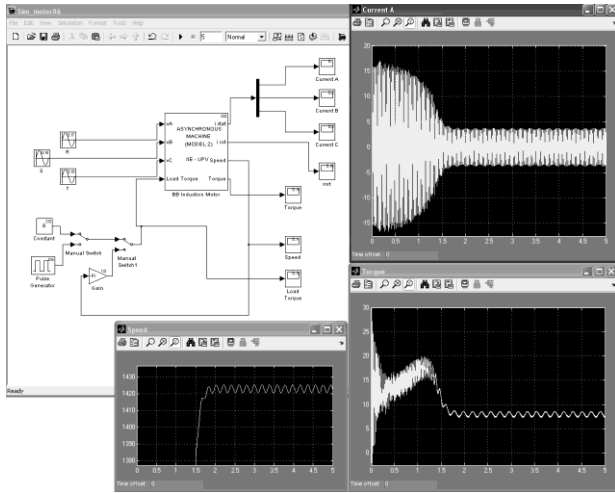


Fig. 2. Simulation of a 1.1 kW, two pole pair Siemens motor having two broken bars, during a start-up and stationary operation. From top to bottom and left to right: current in one phase, speed and output torque.

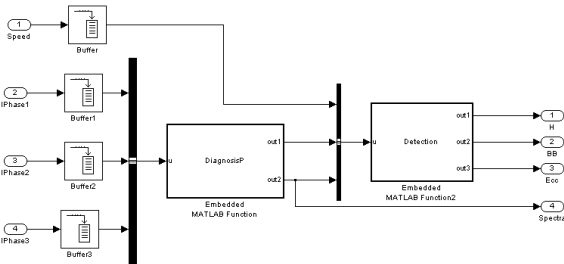


Fig. 3. Diagnosis and fault detection module.

### Machine with two broken bars

Traditional MCSA utilizes the FFT to diagnose rotor asymmetries in induction motors. Current from the mains of the machine is captured in steady state, and then the components related to the fault, usually the sidebands around the main harmonic, are measured from its spectrum. Their value relative to the main harmonic has been the traditional method of assessing the degree of progression of this failure. In Fig. 4 such sidebands (a1, a2), separated from the main component (50 Hz) a value of 5.3 Hz, as predicted by (10) for a rotating speed of 1420 rpm, are clearly seen. Furthermore, higher order harmonics (a3) associated to the fault, predicted by (11) and (12) are also correctly simulated.

### Pulsating torque load

However, this traditional approach of diagnosing the rotor asymmetry cannot be applied on a machine coupled to a pulsating torque load, since the irregularities in the rotor's movement introduce a modulation that may blur or disguise the sidebands caused by the asymmetry around the main current harmonic, as shown in Fig. 5 for a healthy machine.

Several methods have been developed to overcome this problem. One approach consists in studying higher order harmonics (a3), usually less affected by the oscillations produced by the pulsating torque due to the machine inertia. Others involve the capture of a current during a transient and its analysis through time-frequency tools, as in Fig. 6, which

utilizes the method presented in [16] for a machine having one broken bar and operating under pulsating torque load.

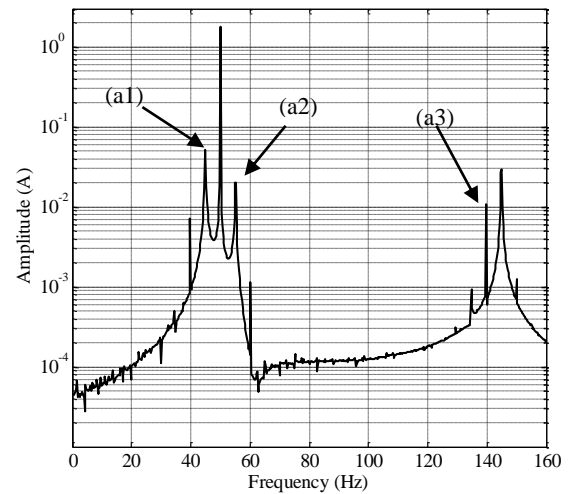


Fig. 4. FFT spectrum from a simulated current of a 1.1 kW, two pole pair Siemens motor having two broken bars.

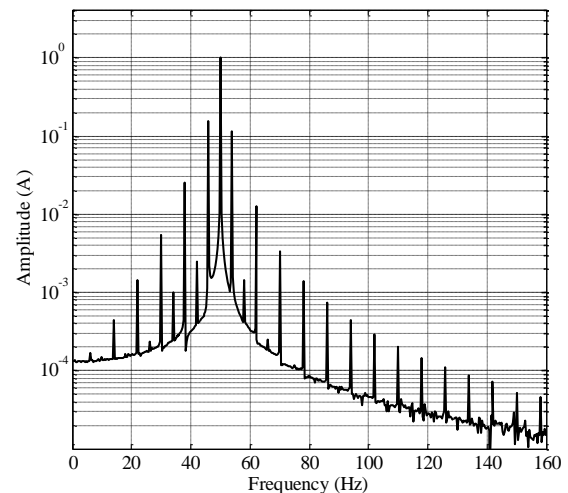


Fig. 5. FFT spectrum from a simulated current of a 1.1 kW, healthy two pole pair Siemens motor coupled to a pulsating torque load.

In this case, the pattern of several harmonics related to the fault is clearly discernible. The LSH 50 (b1) increases their frequency in the last part of the startup, from 0 to 50 Hz, according to Eq. (11). High order components LSH+S 150 (b3) and LSH-S 150 (b2) are also identified. The sidebands having the greatest amplitude related to the pulsating torque remain around the fundamental current component at 50 Hz.

The same fault features can be seen in Fig. 7, where the time-frequency plot of the startup current taken from the mains of a real machine is presented.

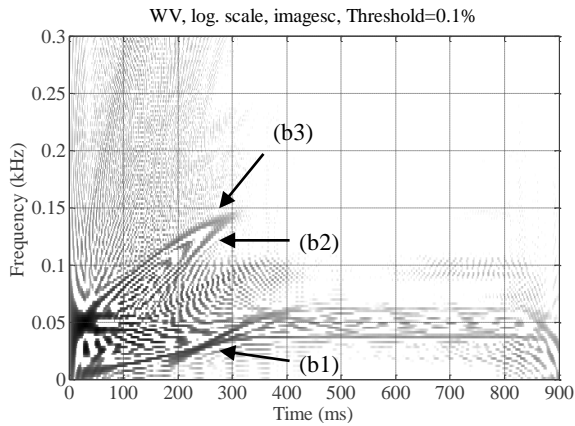


Fig. 6. Wigner-Ville distribution from the simulated startup current of a 1.1 kW four pole Siemens motor coupled to a pulsating torque load and having a broken bar.

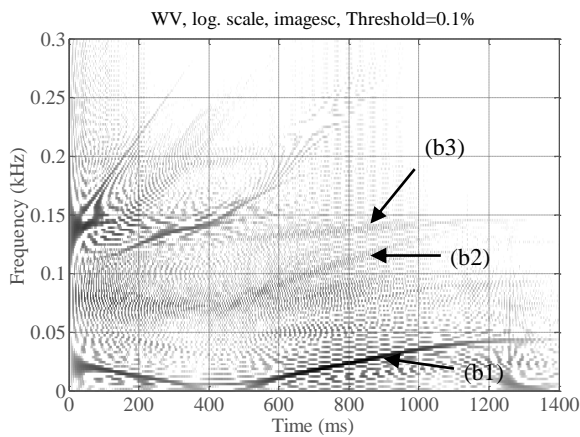


Fig. 7. Wigner-Ville distribution from the real startup current of a 1.1 kW four pole Siemens motor having a broken bar, coupled to a speed-dependant load.

### Eccentricity

Eccentricity is handled by the model computing a matrix of inductances prior to the simulation, which takes into account the variations of permeance that the non-uniform air gap causes.

In a healthy machine, the inductances depend only on the relative position between conductors, yielding a vector that is processed accordingly. For static eccentricity the value of the inductances also change relative to the position of center of the rotor, being distributed their values in a matrix. Finally, for mixed eccentricity, a 3D matrix is needed to also handle their variation with respect to the position of the rotor.

The matrix is calculated once prior to the simulation of the machine in each state, stored and its values selected as they are needed to solve Eq. (3), (4) and (8). This allows performing several simulations on a specific machine and state under different power supply and load conditions with no need of recalculating it, which shortens the computation time, a critical aspect considering its application in education and training.

Fig. 8 shows the results of applying the proposed model to simulate a mixed eccentricity in a four pole motor during stationary operation. All low frequency components presented

in Table 3 can be detected: EC 25 (c1), EC 75 (c2) and EC 100 (c3).

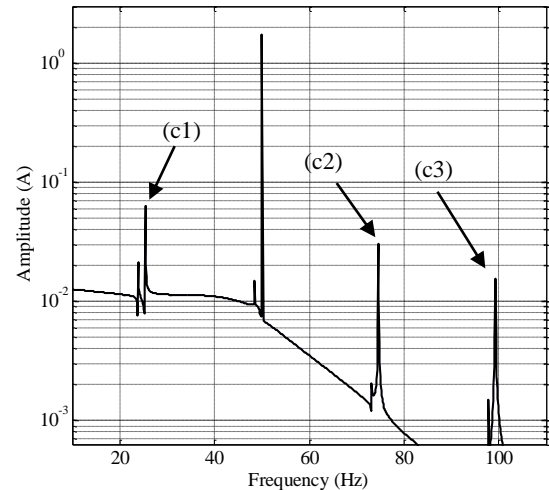


Fig. 8. FFT spectrum of the current from a simulated 4 kW ABB induction motor suffering 20% static and 50% dynamic eccentricity

## 5. CONCLUSIONS

This paper presents a new induction motor model able to simulate an induction machine having a rotor asymmetry or eccentricities faults, both in stationary and transient operation and under variable load conditions. Due to a method of discrete circular convolution carried out through the FFT, the computation is fast enough (1 minute per second simulated at 5 kS/s) to assure the suitable interactivity for its application in education, training and e-training.

The model has been programmed in Simulink in order to be used with different loads and control systems. An analysis tool coupled to its output facilitates the presentation of several new techniques of diagnosis in maintenance training courses. The presented model has been introduced in the lecturing of electronic engineers with encouraging results.

## 6. ACKNOWLEDGEMENT

This work was supported by the Spanish Ministerio de Ciencia e Innovación under the framework of the Programa Nacional de Proyectos de Investigación Fundamental, Project Reference DPI2011-23740

## 7. REFERENCES

- [1] W.T. Thomson, M. Fenger, "Current signature analysis to detect induction motor faults" **IEEE Industrial Applications Magazine**, pp. 26-34, July/August 2001.
- [2] G.B Kliman, J Stein, and R.D. Endicott, "Noninvasive Detection of Broken Rotor Bars in Operating Induction Motors," **IEEE Transactions on Energy Conversion**, vol. 3, no. 4, pp. 873-879, December 1988.
- [3] R Cameron et W.T. Thomson and A.B. Dow, "Vibration and current monitoring for detecting airgap eccentricity in

- large induction motors," **IEEE Proceedings**, vol. 133, pt. B, no. 3, May 1986, pp. 155-163.
- [4] D. G. Dorrell, W. T. Thomson, and S. Roach, "Analysis of airgap flux, current, vibration signals as a function of the combination of static and dynamic airgap eccentricity in 3-phase induction motors," **IEEE Transactions on Industry Applications**, Vol. 33, No. 1, pp. 24-34, Jan./Feb. 1997.
- [5] V. Climente-Alarcon, V., J.A. Antonino-Daviu, M. Riera-Guasp, R. Puche, L. Escobar-Moreira, N. Wiener, P. Jover-Rodriguez, A. Arkkio, Application of TFD tools for the tracing of eccentricity-related components in induction machines. **Industrial Electronics, 2009. IECON '09. 35th Annual Conference of IEEE**.
- [6] R.R. Schoen and T.G. Habetler. "Evaluation and Implementation of a System to Eliminate Arbitrary Load Effects in Current-Based Monitoring of Induction Machines," **IEEE Transactions on Industry Applications**, vol. 33, no. 6, pp. 1571-1577, November/December 1997.
- [7] S. Nandi, S. Ahmed, H. A. Toliyat, "Detection of Rotor Slot and Other Eccentricity Related Harmonics in a Three Phase Induction Motor with Different Rotor Cages", **IEEE Transactions on Energy Conversion**, vol. 16, no. 3, September 2001.
- [8] R. Puche-Panadero; M. Pineda-Sanchez, M. Riera-Guasp, J. Roger-Folch, J. Perez-Cruz, , "Improved Resolution of the MCSA Method Via Hilbert Transform, Enabling the Diagnosis of Rotor Asymmetries at Very Low Slip", **IEEE Transactions On Energy Conversion**, Vol. 24, No. 1, March 2009
- [9] S.H. Kia, H. Henaio and G.A. Capolino, "Diagnosis of Broken Bar Fault in Induction Machines Using Discrete Wavelet Transform without Slip Estimation", Conference Record of the 2007 **IEEE Industry Applications Conference, 2007. 42nd IAS Annual Meeting. 23-27 Sept. 2007** Page(s):1917 – 1922.
- [10] F. Briz, M.W. Degert, P. Garcia, D. Bragado, "Broken rotor bar detection in line-fed induction machines using complex wavelet analysis of startup transients," **IEEE Transactions on Industry Applications**, Vol. 44, no. 3, pp. 760-768, May-June 2008.
- [11] A.Ordaz-Moreno, R.Romero-Troncoso, J.A.Vite-Frías, J.Riviera-Gillen, A.García-Pérez, "Automatic online diagnostic algorithm for broken-bar detection on induction motors based on Discrete Wavelet Transform for FPGA implementation", **IEEE Transactions on Industrial Electronics**, Vol. 55, no.5, pp.2193-2200, May 2008.
- [12] J. Antonino-Daviu, M. Riera-Guasp, J. Roger-Folch and M.P. Molina, "Validation of a New Method for the Diagnosis of Rotor bar Failures via Wavelet Transformation in Industrial Induction Machines," **IEEE Transactions on Industry Applications**, Vol. 42, No. 4, pp. 990-996, July/August 2006.
- [13] J.A. Antonino-Daviu, M. Riera-Guasp, M. Pineda-Sanchez and R.B. Perez, "A critical comparison between DWT and Hilbert-Huang-based methods for the diagnosis of rotor bar failures in induction machines" **IEEE Transactions on Industry Applications**, Vol.45, no. 5, pp. 1794-1803, September/October 2009.
- [14] S. Rajagopalan, J.A. Restrepo, J.M. Aller, T.G. Habetler, and R.G. Harley, "Wigner-Ville distributions for detection of rotor faults in brushless DC (BLDC) motors operating under non-stationary conditions". **IEEE International Symposium on Diagnostics for Electric Machines, Power Electronics and Drives, 2005. SDEMPED 2005**.
- [15] J. Rosero, J.A.O. Romeral, L. Romeral, E. Rosero, "Short circuit fault detection in PMSM by means of empirical mode decomposition (EMD) and wigner ville distribution (WVD)" **Applied Power Electronics Conference and Exposition, 2008. APEC 2008**. Twenty-Third Annual IEEE.
- [16] V. Climente-Alarcon, J.A. Antonino-Daviu; M. Riera, R. Puche-Panadero, L.A. Escobar, "Wigner-Ville Distribution for the Detection of High Order Harmonics due to Rotor Asymmetries" **IEEE International Symposium on Diagnostics for Electric Machines, Power Electronics and Drives, 2009. SDEMPED 2009**
- [17] S. Ayasun, and C. O. Nwankpa, "Induction Motor Tests Using MATLAB/Simulink and Their Integration Into Undergraduate Electric Machinery Courses" **IEEE Transactions on Education**, Vol. 48 No. 1, Feb. 2005.
- [18] O. Dordevic, N. Bodo, M. Jones, "Model of an Induction Machine with an Arbitrary Phase Number in Matlab/Simulink for Educational Use." **45<sup>th</sup> International Universities' Power Engineering Conference 2010. UPEC 2010**.
- [19] Nouridine Aliane, "A Matlab/Simulink-Based Interactive Module for Servo Systems Learning" **IEEE Transactions On Education**, Vol. 53, No. 2, May 2010
- [20] F. Taege, E. Hommes, "Das allgemeine Gleichungssystem des Käfigläufermotors unter Berücksichtigung der Oberfelder. Teil I Allgemeine Theorie", **Archiv für Elektrotechnik** 55 (1972), pp. 21-31.
- [21] S. Nandi, "Modeling of induction machines including stator and rotor slot effects", **IEEE Trans. Ind. Appl.**, Vol. 40, no. 4, pp. 1058-1065, July-Aug. 2004.
- [22] L. Serrano-Iribarnegaray, **Fundamentos de Máquinas Eléctricas Rotativas, Marcombo**, Barcelona, 1989.
- [23] R. Brüderlink, "Feld-Erregerkurve einer unregelmässigen Mehr-phasenwicklung in ihre Einzelwellen", **Elektrotechnische Zeitschrift**, Heft 39, pp. 1093-1096, September 1921
- [24] M. Pineda-Sanchez et Al. "Calculation of Winding Inductances via Magnetic Vector Potential, Discrete Convolution and Fast Fourier Transform", **Przegląd Elektrotechniczny (Electrical Review)**, Przegląd Elektrotechniczny, Vol: 86, No: 5, 2010, pp: 109-113.
- [25] M. Riera-Guasp, J.A. Antonino-Daviu, M. Pineda-Sanchez, R. Puche-Panadero, J. Perez-Cruz, "A general approach for the transient detection of slip-dependent fault components based on the discrete wavelet" **IEEE Transactions on Industrial Electronics**, Vol. 55 , No. 12, December 2008 , pp. 4167 - 4180
- [26] A. Bellini, F. Filippetti, G. Franceschini, C. Tassoni, G.B. Kliman, "Quantitative Evaluation of Induction Motor Broken Bars by Means of Electrical Signature Analysis", **IEEE Transactions on Industry Applications**, Vol. 37, no. 5, pp 1248-1255, September/October 2001.
- [27] S. Nandi, H.A. Toliyat, "Condition monitoring and fault diagnosis of electrical motors- A review", **IEEE Transactions on Energy Conversion**, Vol. 20, No. 4, December 2005, pp.719-729.
- [28] D. G. Dorrell, W. T. Thomson, S. Roach, "Analysis of airgap flux, current, vibration signals as a function of the combination of static and dynamic airgap eccentricity in 3-phase induction motors," **IEEE Transactions on Industry Applications**, Vol. 33, No. 1, pp. 24-34, Jan./Feb. 1997.