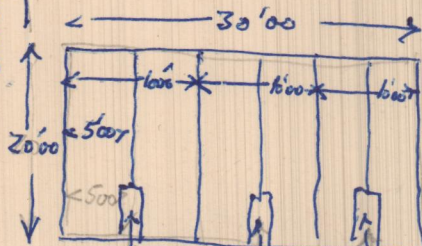
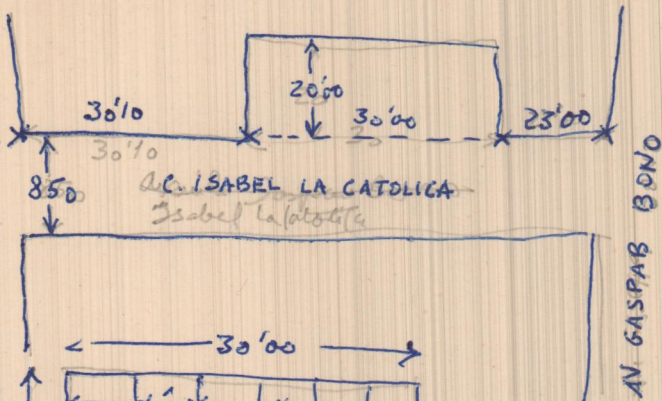
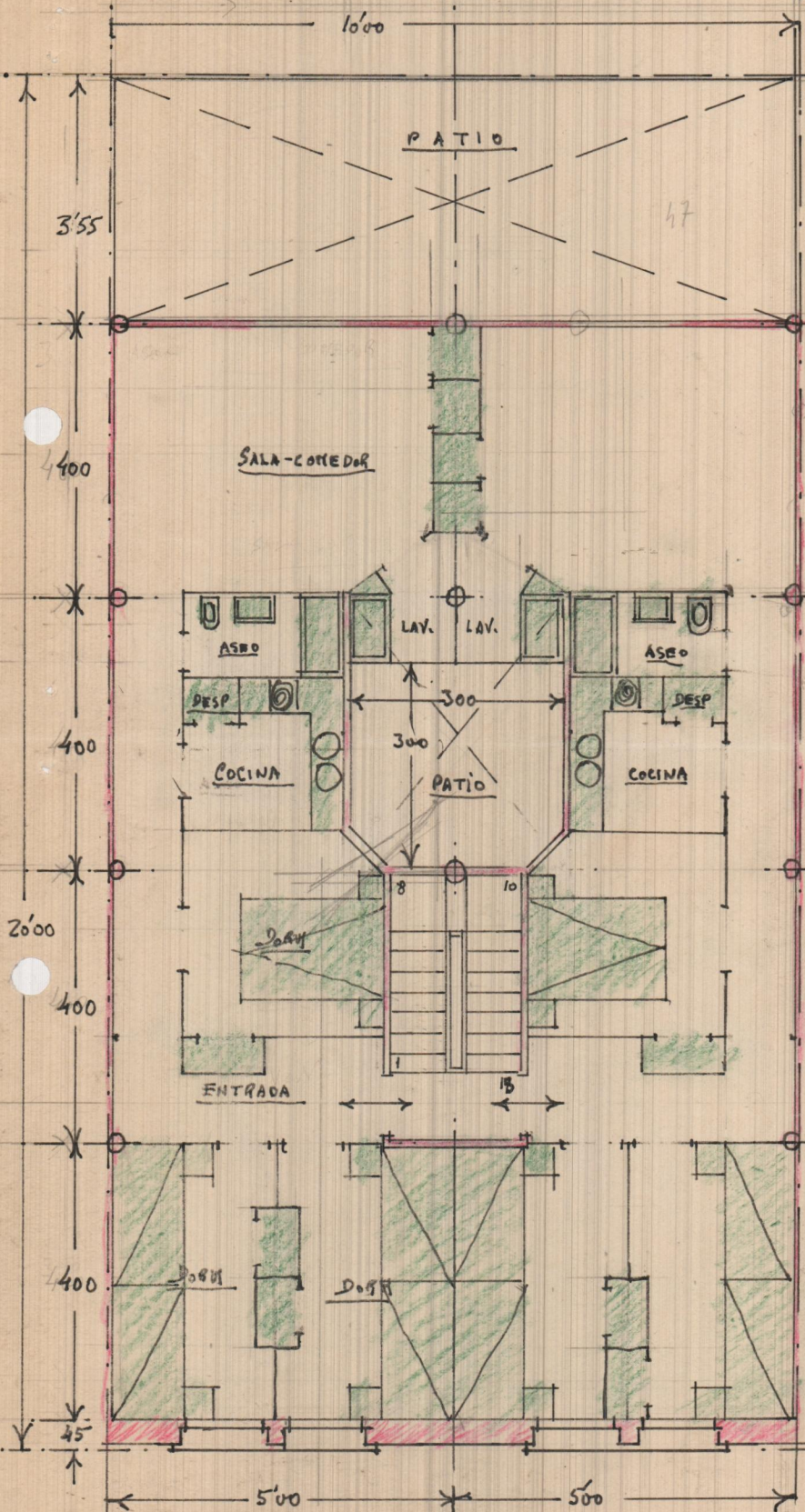


CARRETERA MISLATA-TORRENTE



ALACUAS-5-2-59



$18'45" \times 5 = 92'225$

$190 \times 300 = 57000$

$\frac{30 \times 30}{2} = 450$
 $\frac{1}{2} \text{ de } 16200 = 8100$

7414
 4605

47

Armas

300

300

300

300

SALA-COMEDOR

PATIO

ASEO

LAV. LAV.

ASEO

DESP

DESP

COCINA

PATIO

COCINA

DORM

ENTRADA

3'55

400

400

20'00

400

400

45

10'00

5'00

5'00