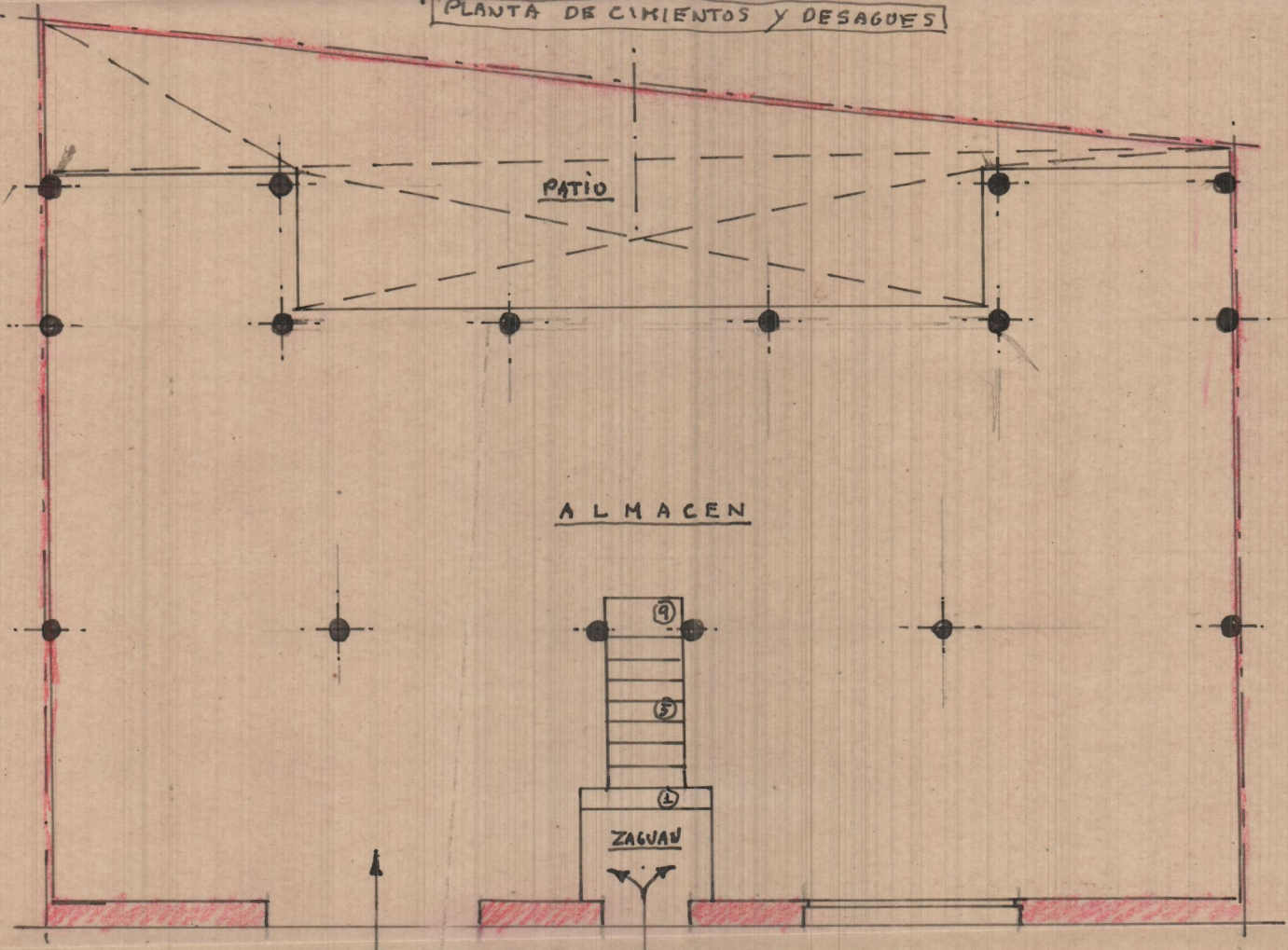
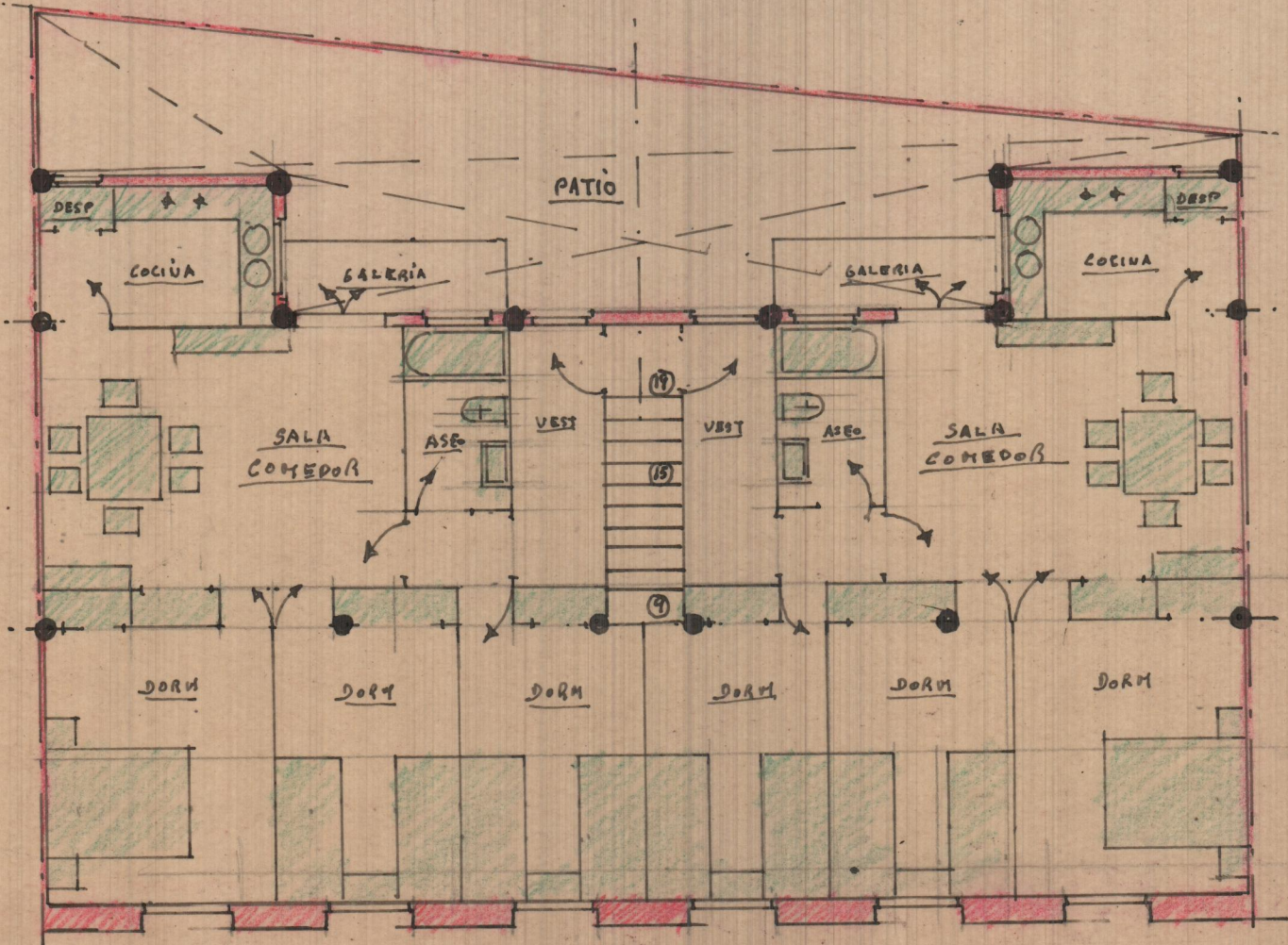


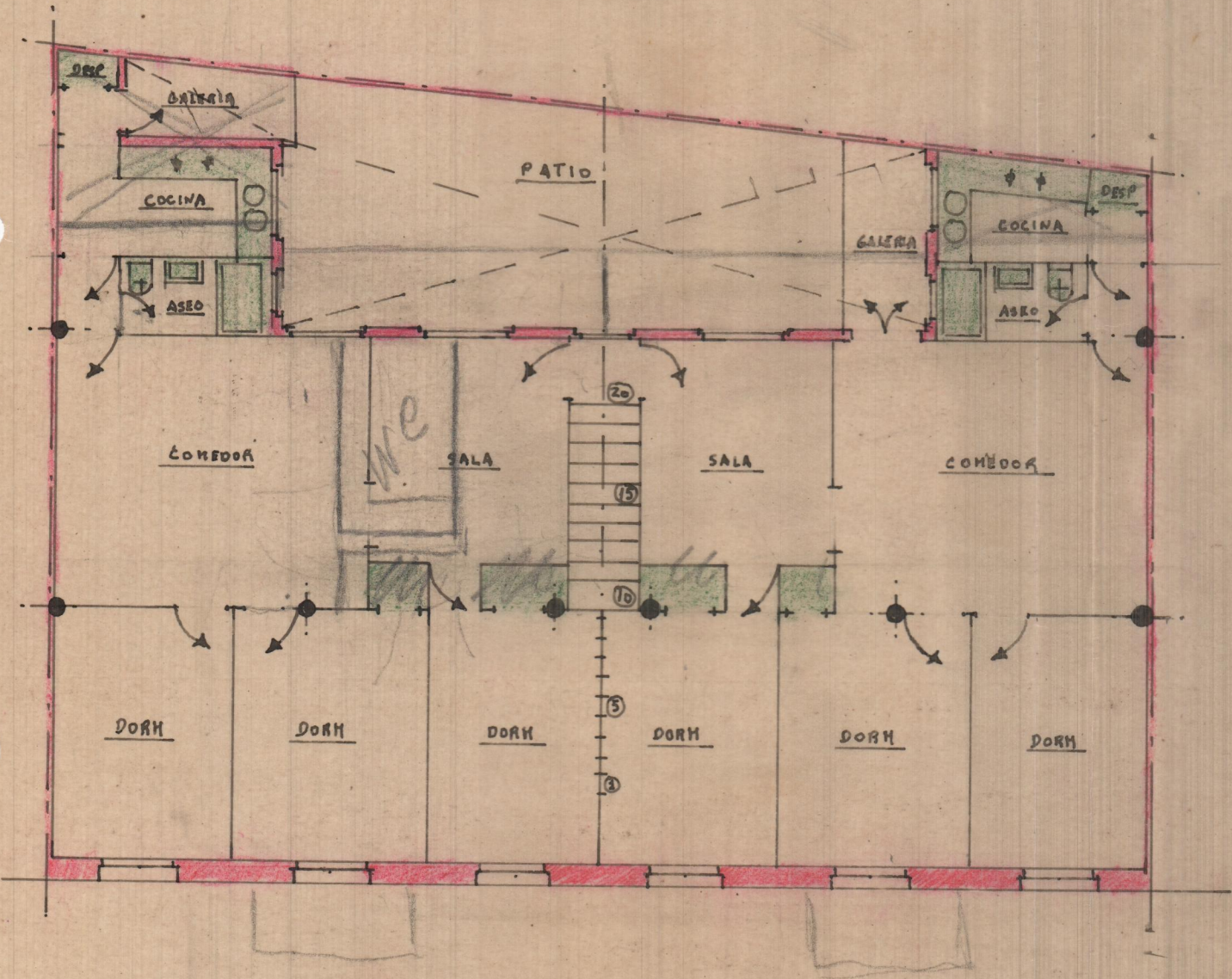
PLANTA DE CIMIENTOS Y DESAGÜES



PLANTA BAJA-DISPOSICION



PLANTA ALTA-DISPOSICION

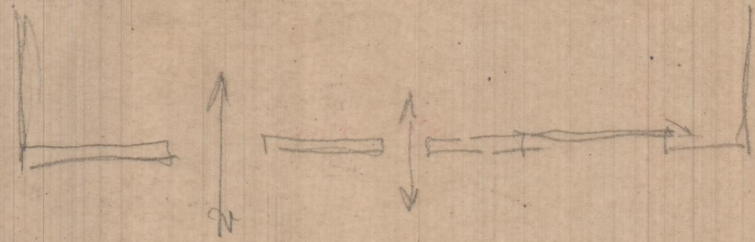


170
 85
 85
 136
 14450
 14
 $\hline 15850$

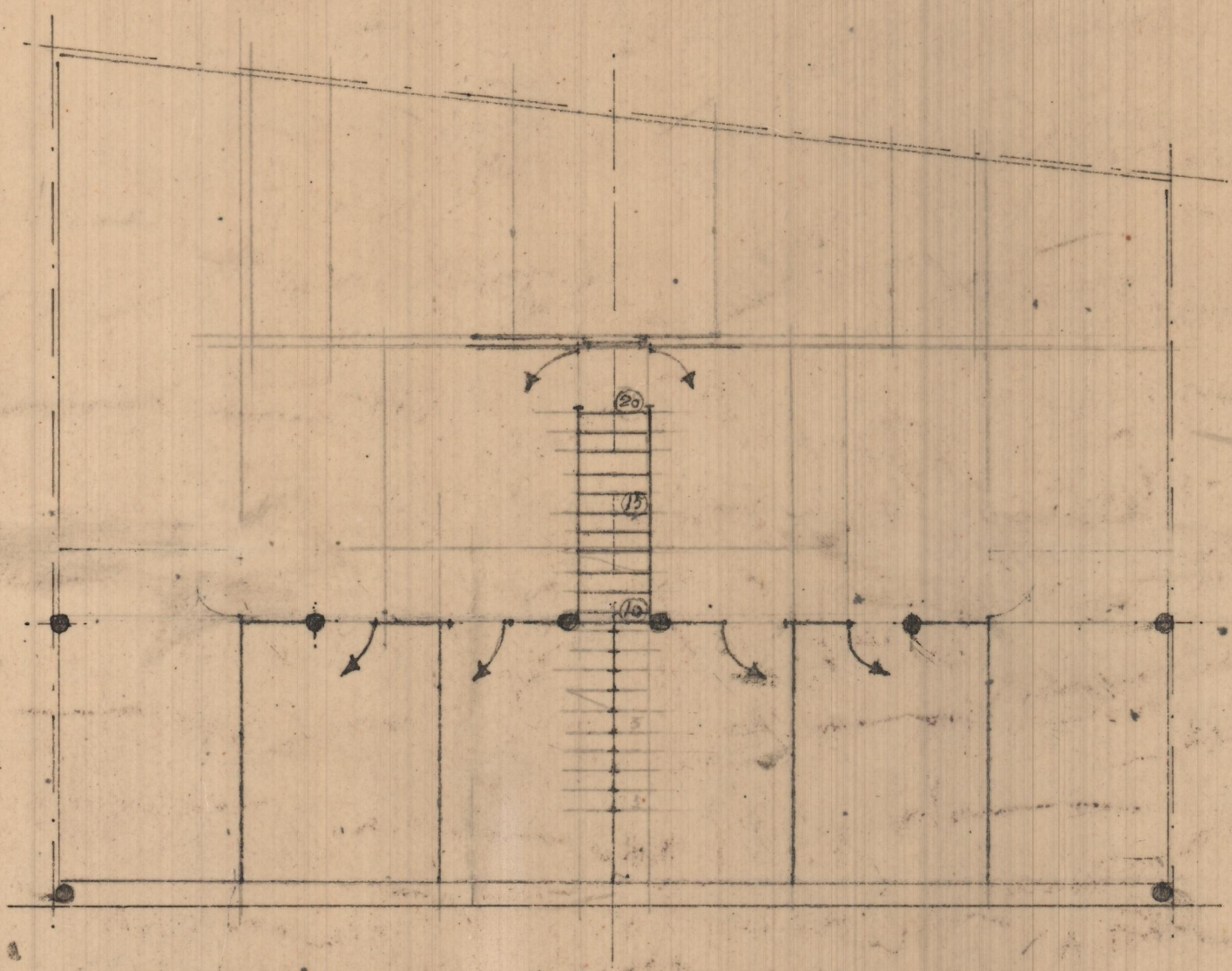
$3'50$
 $2'00$
 $2'00$
 2
 $\hline 14'00$

85400×2
 $\hline 170800$ 2%
 $\hline 3416$

$170 \times 8'5 = 144'50$
 $2 \times 3'5 \times 2'0 = 14'00$
 $\hline 158'50 \text{ m}^2$
 $600 \text{ m}^2 / 2$
 $\hline 85400 \text{ m}^2$
 $2 \times 1/2$
 $\hline 170800 \text{ m}^2$
 2%
 $\hline 3416$



ENERO-1963



[Faint, illegible handwritten notes or scribbles on the right side of the page.]

C. INGENIERO LLOMBART