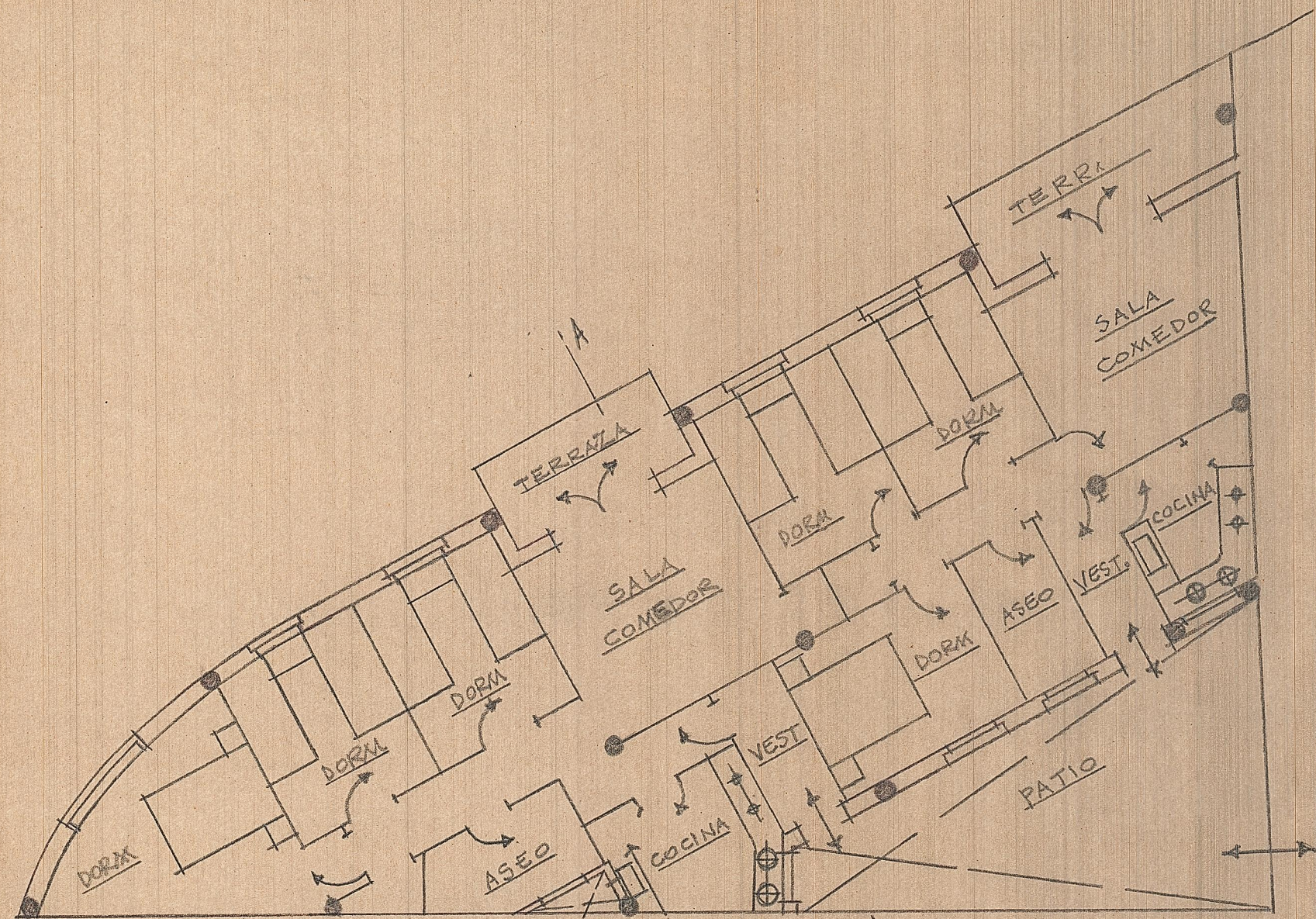


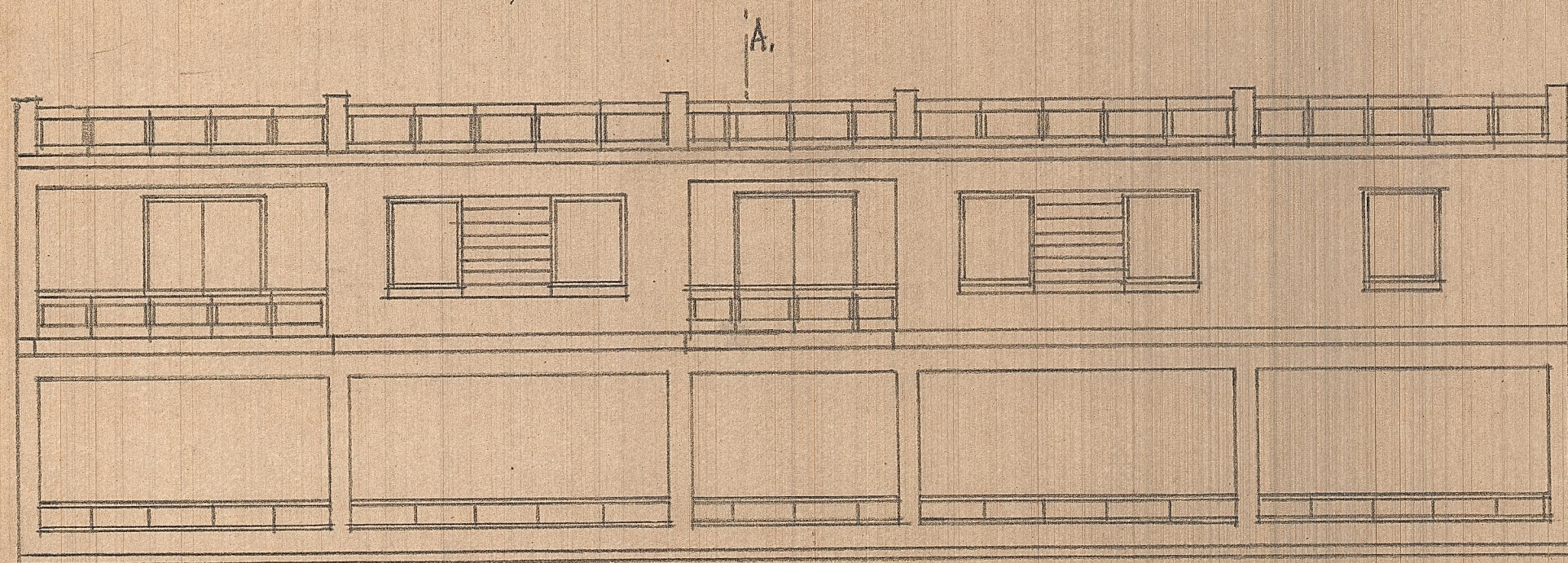
PLANTA ALTA EN SERRA

ESCALA=1:300

Valencia 14 de Octubre de 1963
EL ARQUITECTO

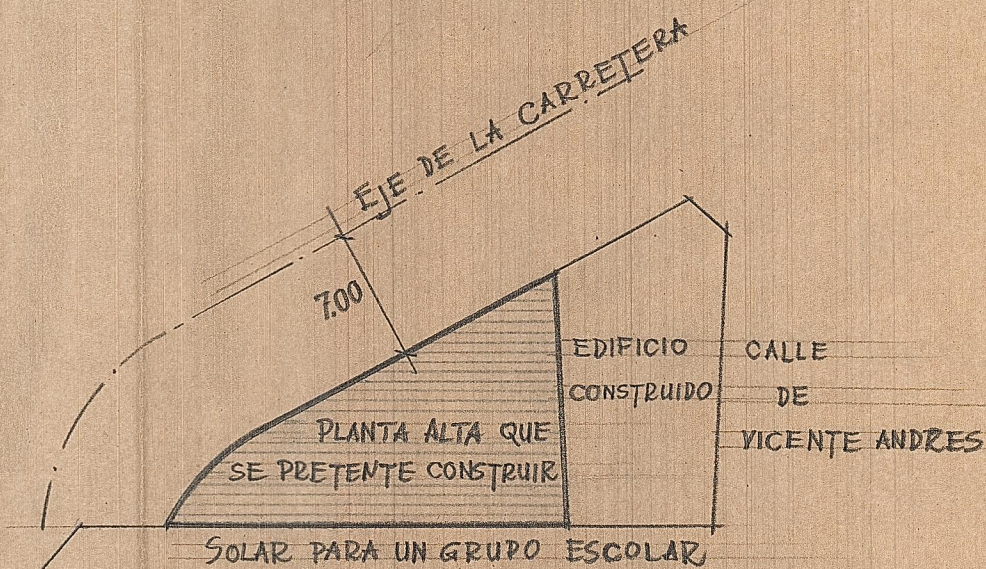


Disposición de la planta alta

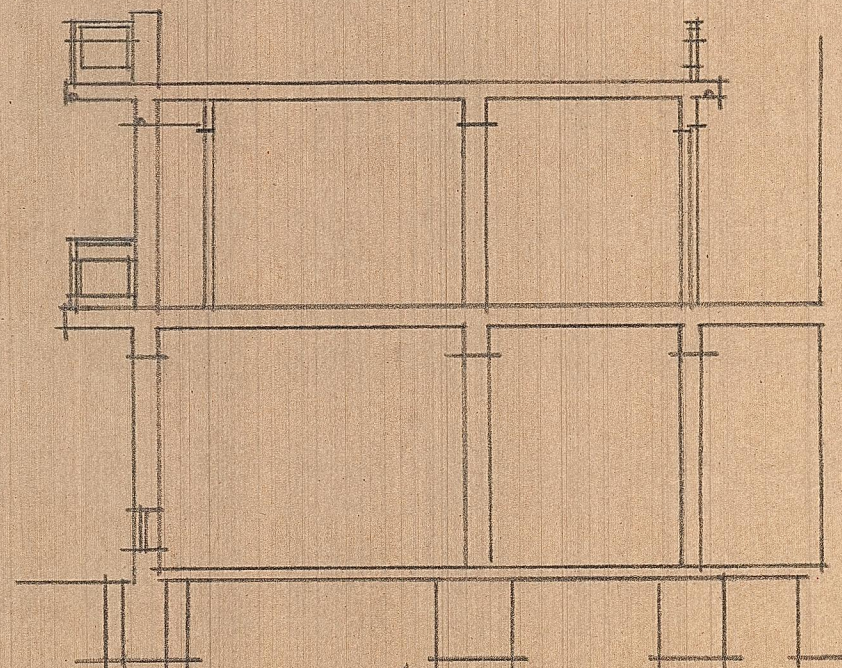


Fachada.

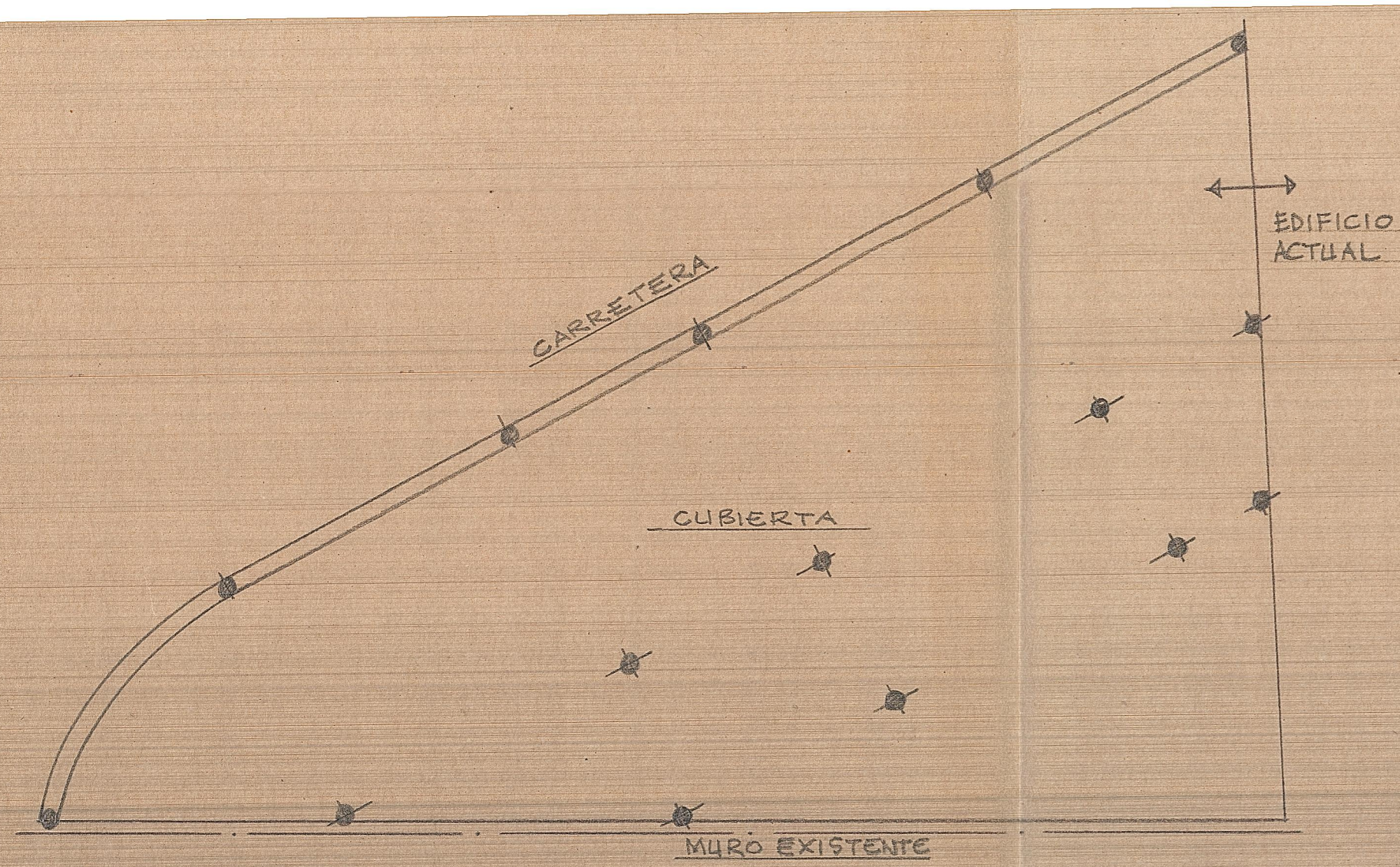
B.



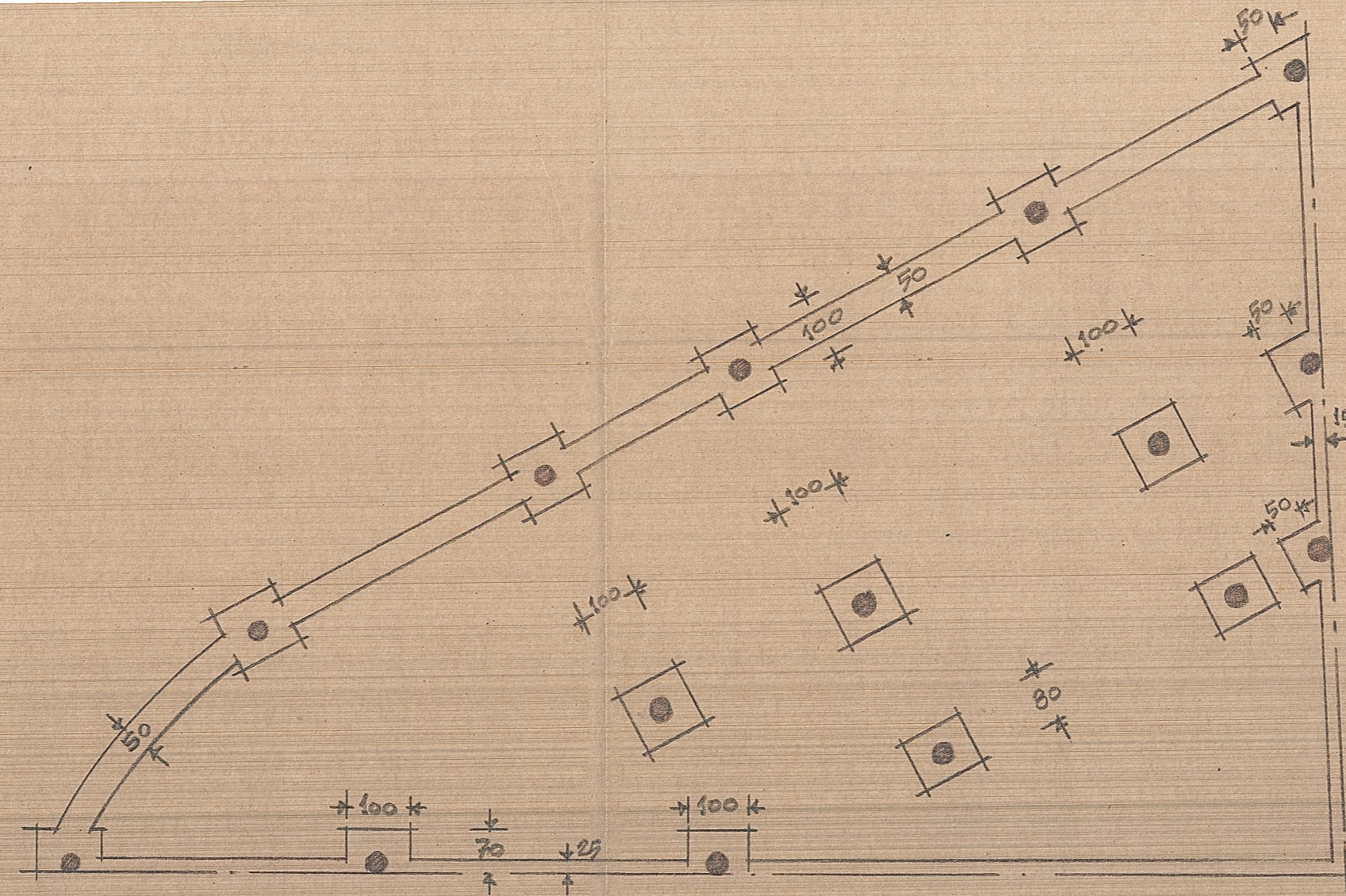
Implantamiento E.= 1:400.



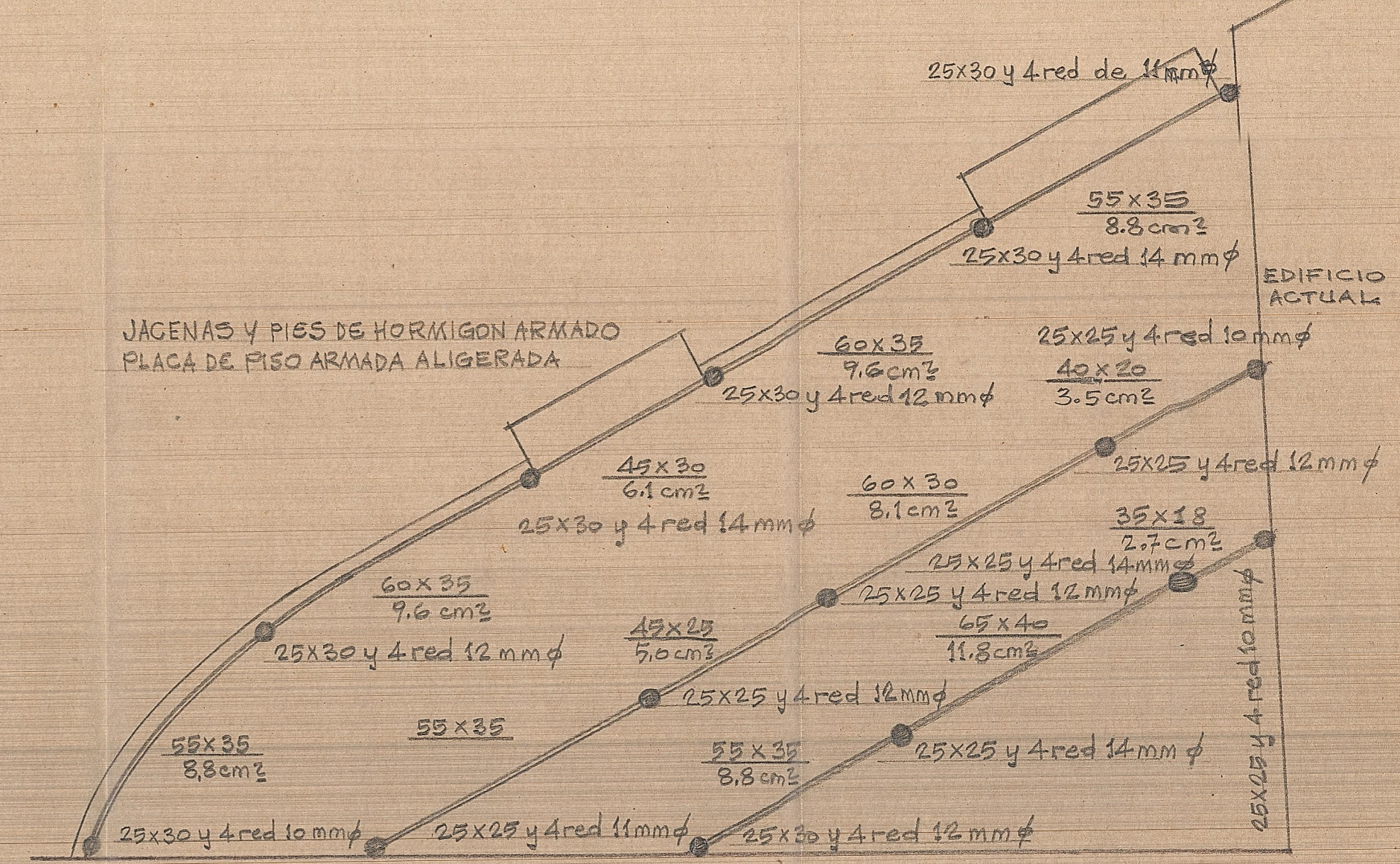
Sección por A-B.



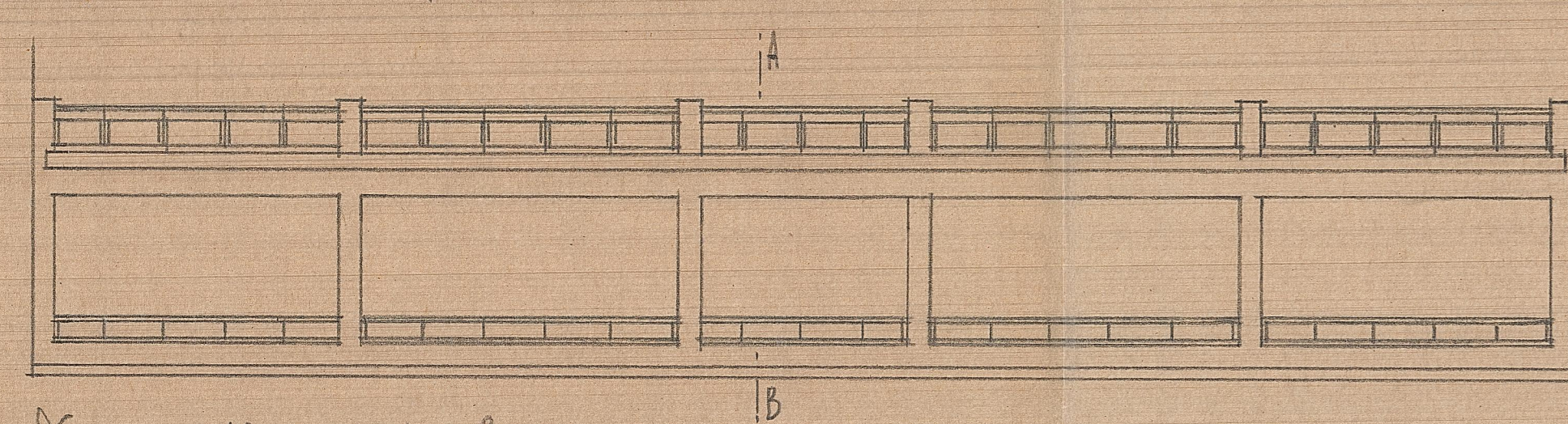
Planta de disposición



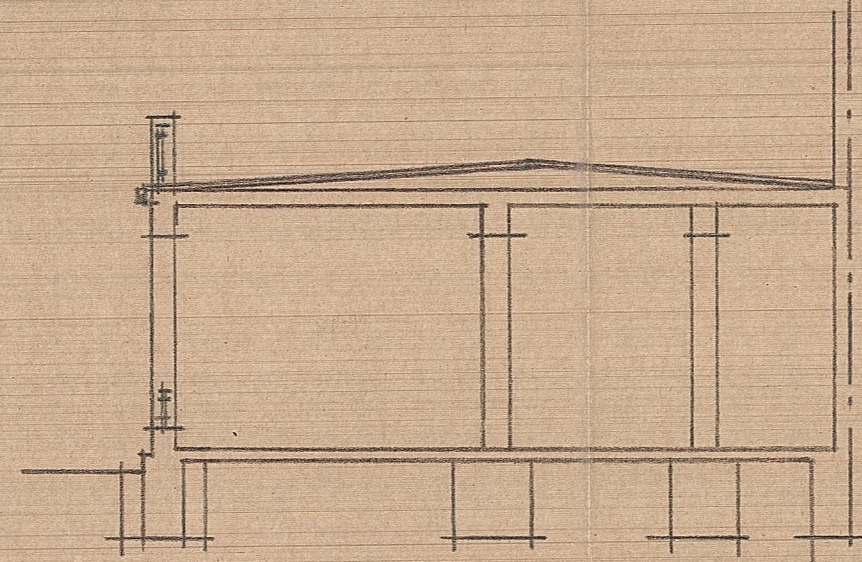
Planta de cimientos



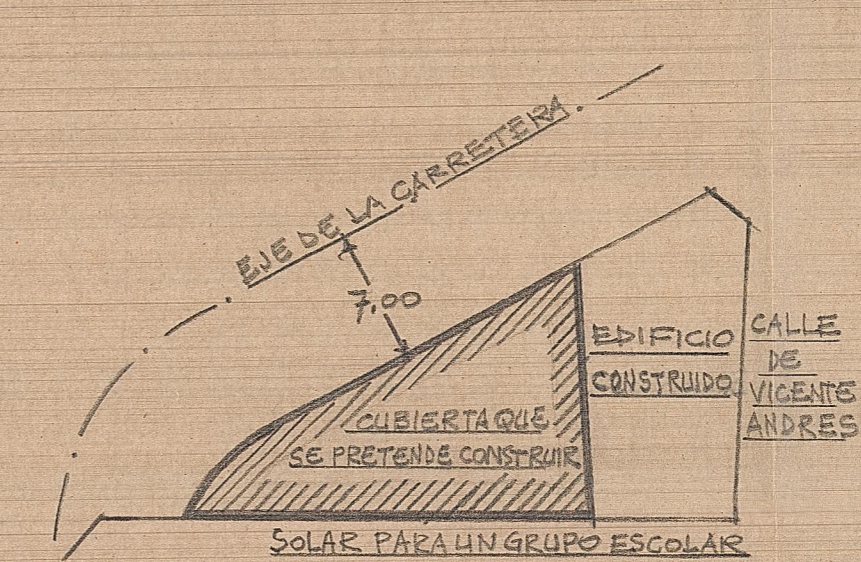
Estructura de faja - Cubierta



Desarrollo de la fachada



Sección por f-B



Implantamiento E=1:400

CUBIERTA EN SERRA

ESCALA = 1:100

Valencia 14 Octubre de 1962
EL ARQUITECTO