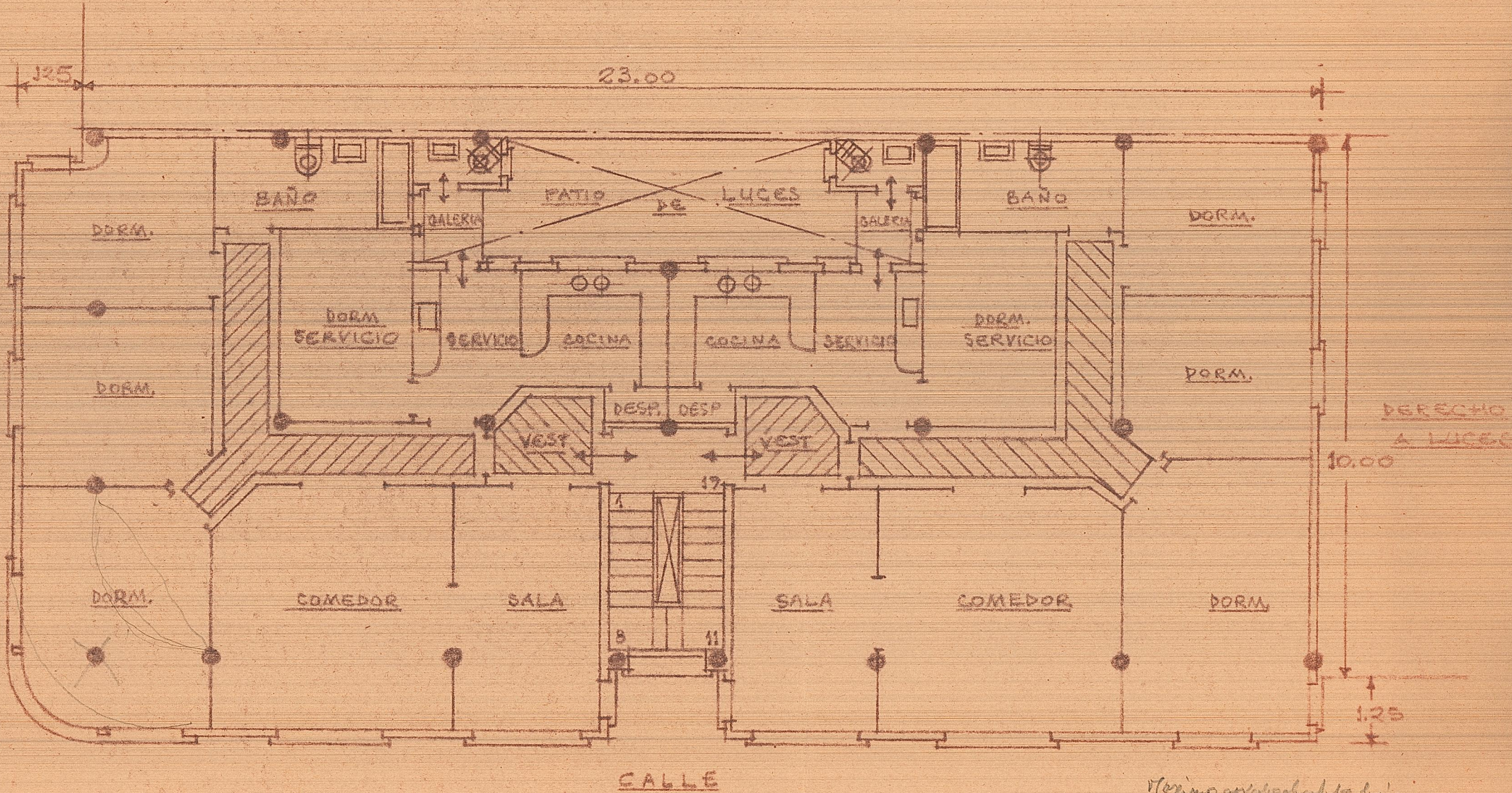


$9'0 \times 11'00 = 99'00 = 2$
 $8'2 \times 2'50 = 20'50 =$
 $1'2 \times 3'00 = 3'60$

 $123'10 = 2$

PLANTA DE DISPOSICIÓN
ESCALA = 1/3100



Maximo aprovechamiento luz 3'
 Pilas angulos 32x32 9'60
 Plab. tipo 4 1/2 x 60 440
 1/4 - ascensor 14'00
 23 mms.