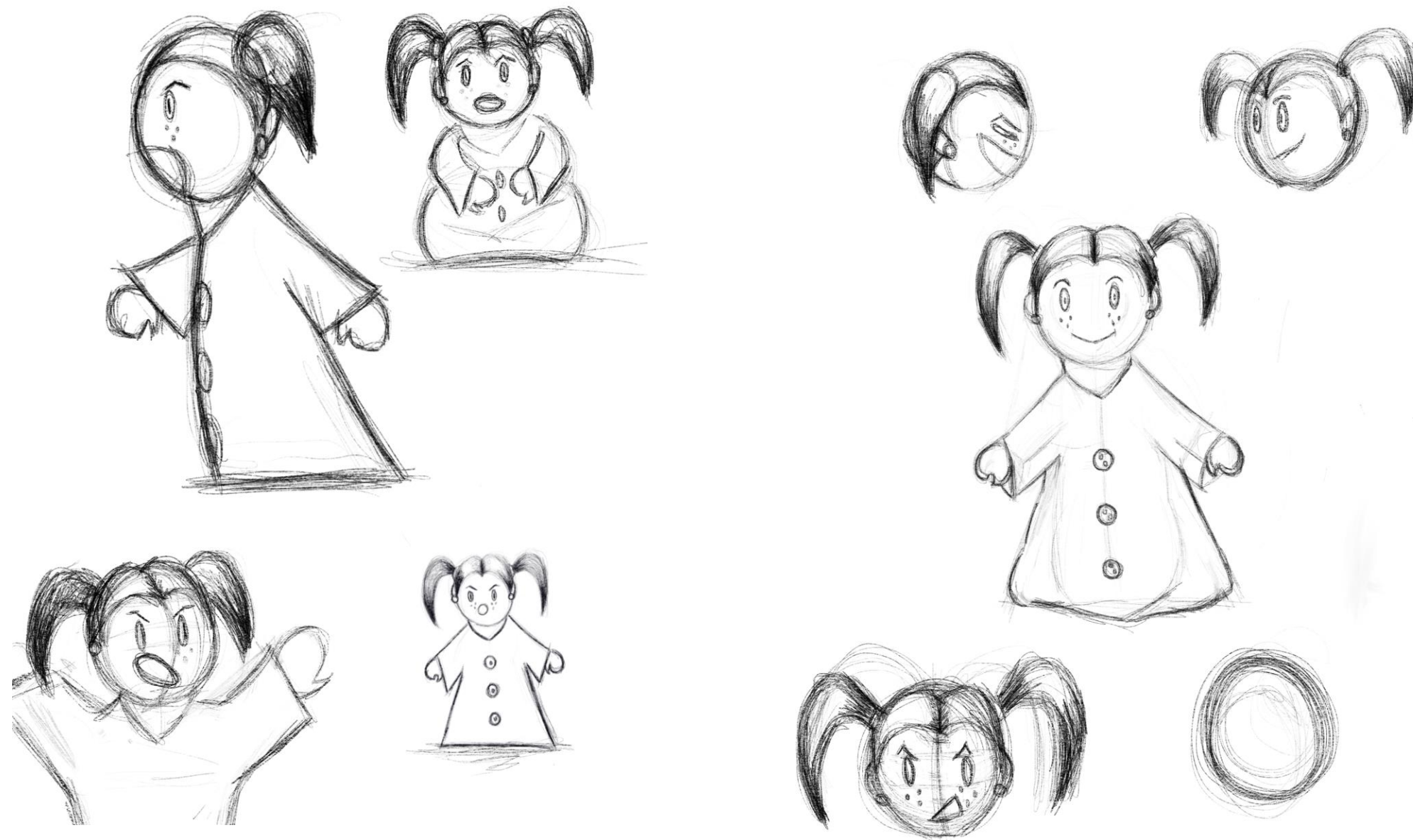
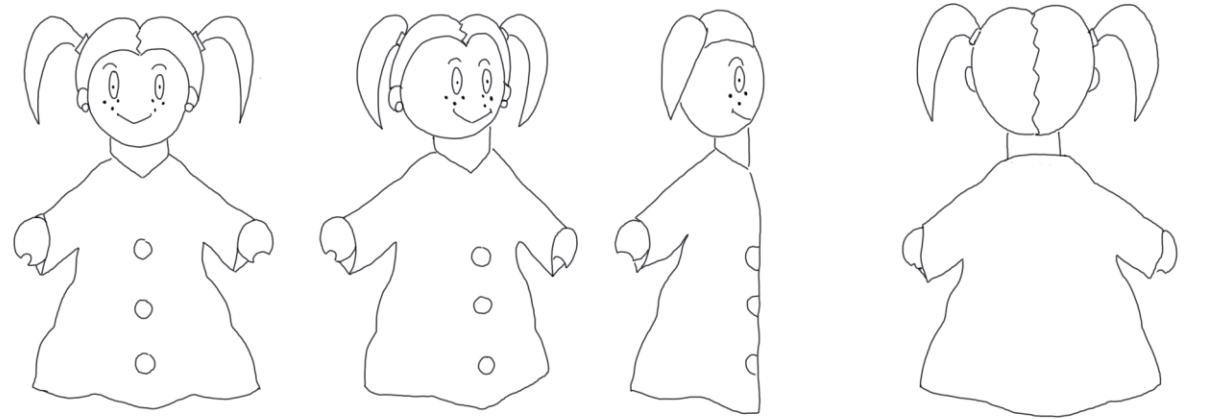
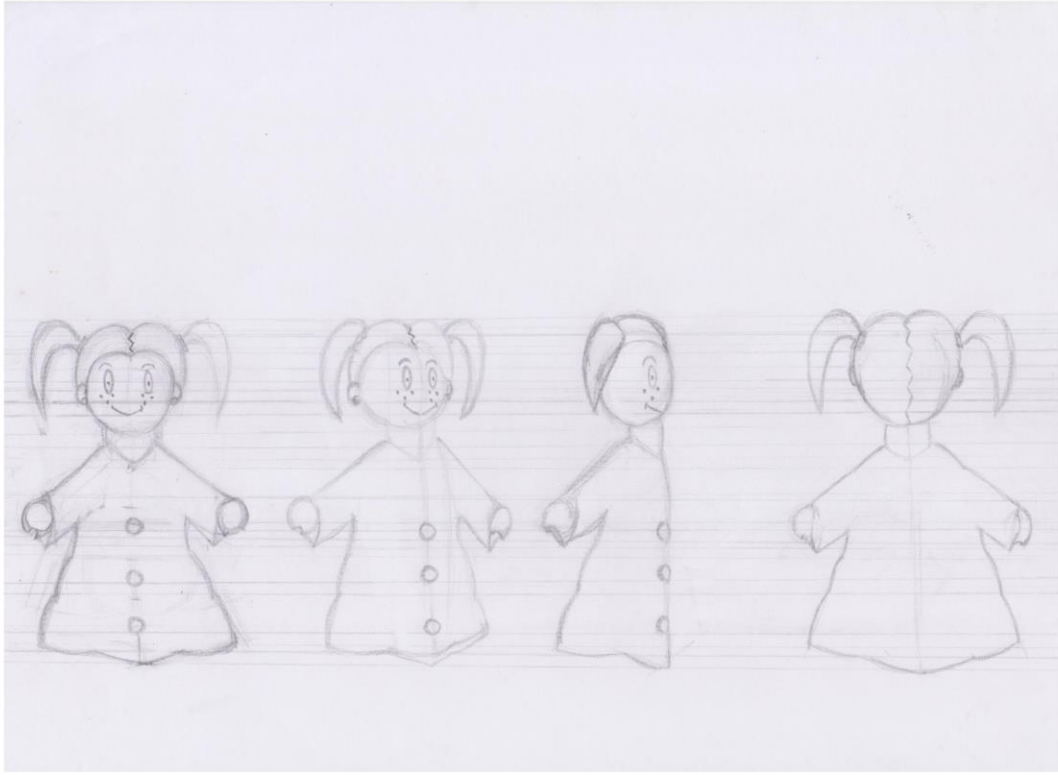


TRAYECTORIA BIZARRA

SARA MUÑOZ DE GRACIA



BOCETOS DE ADALAIDE



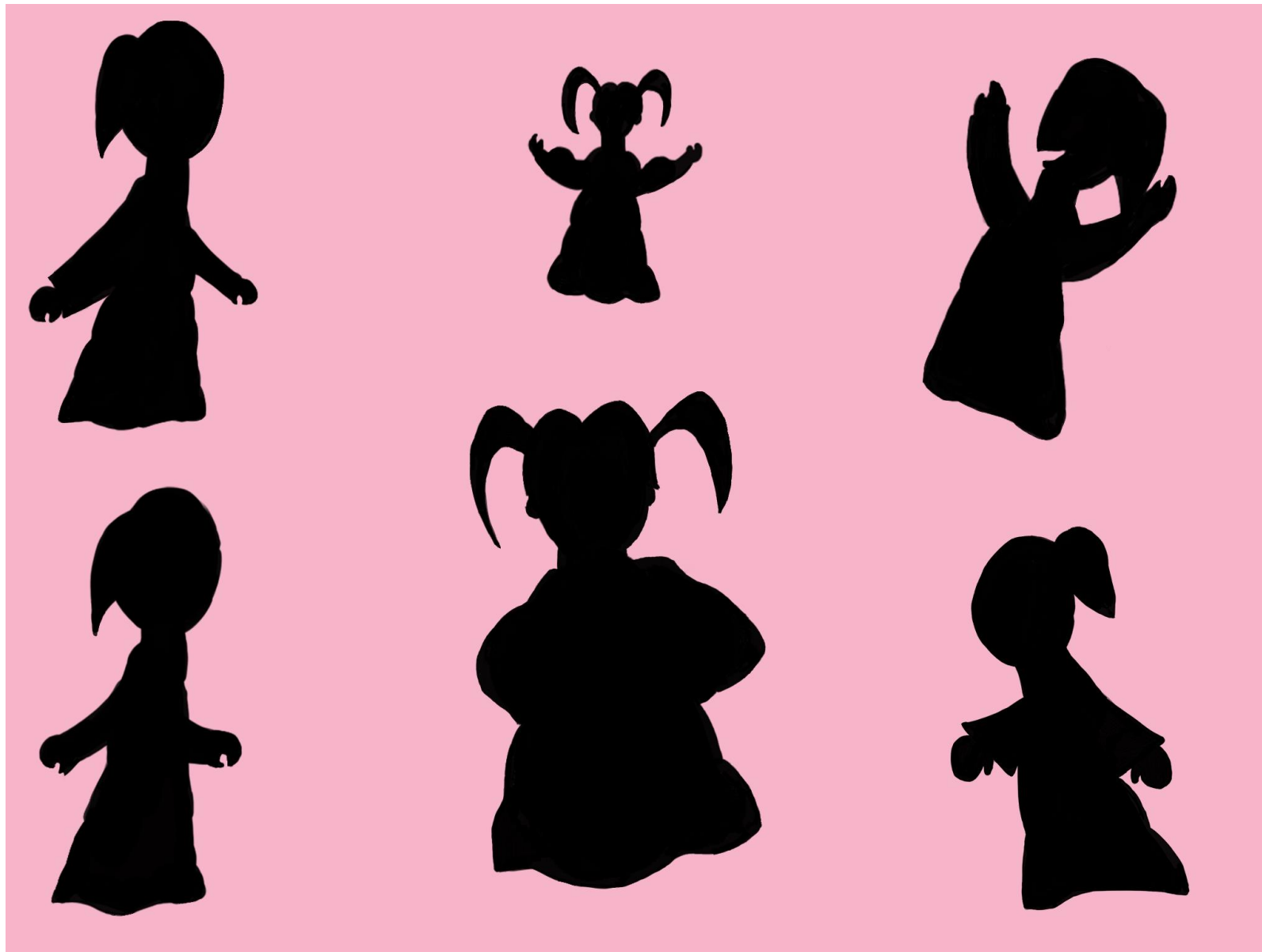
TURN AROUND DE ADALAIDE



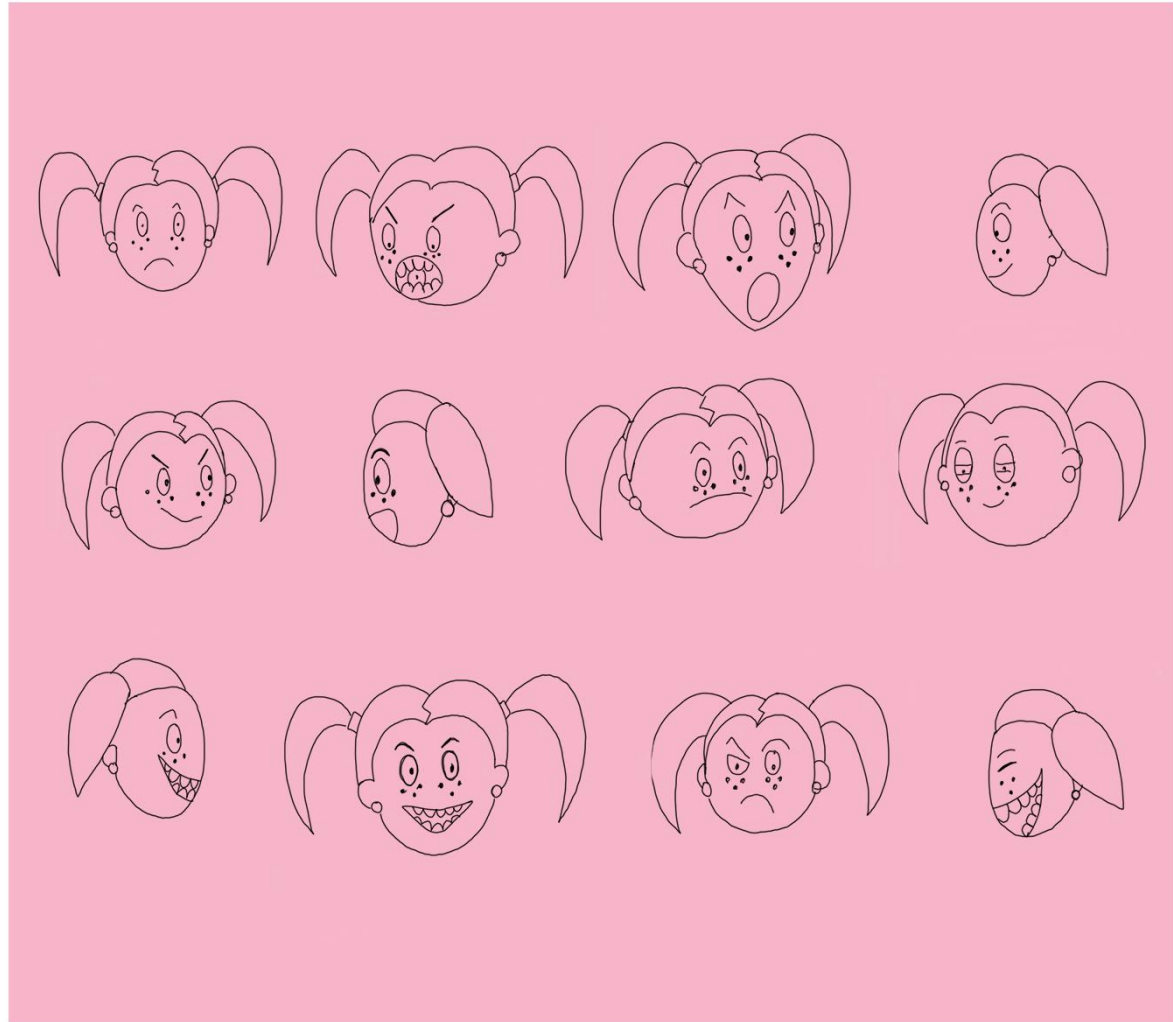
ADALIDE



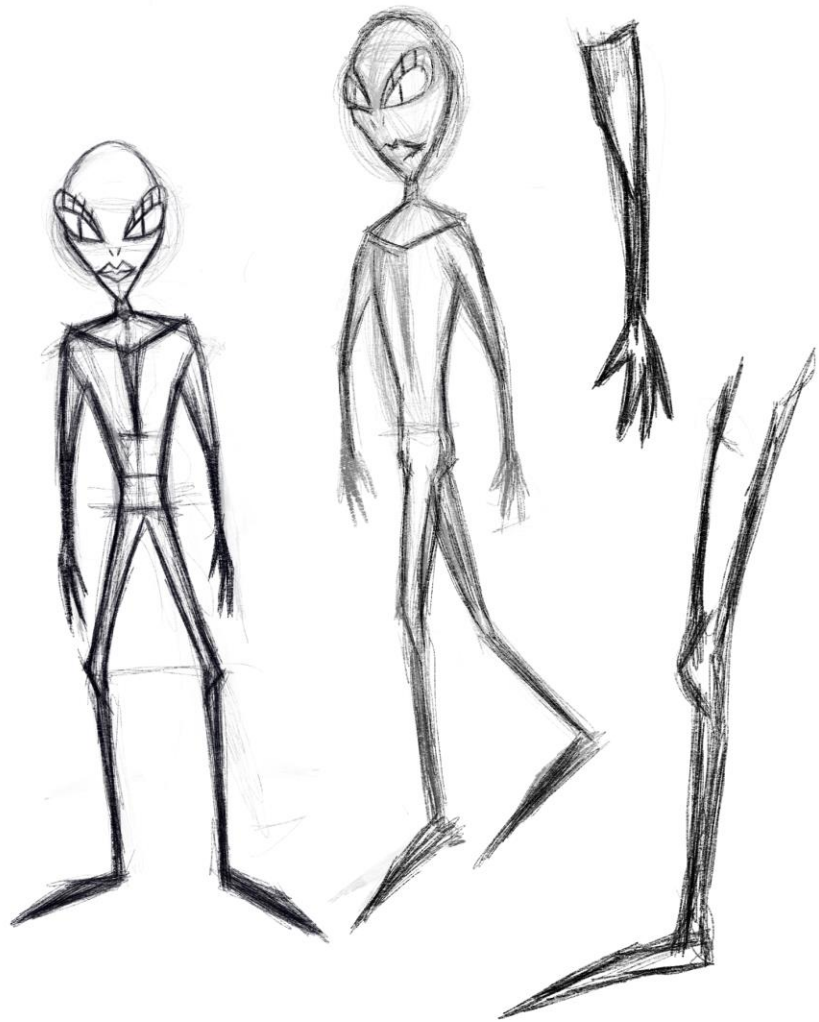
DISEÑO DEFINITIVO DE ADALIADE



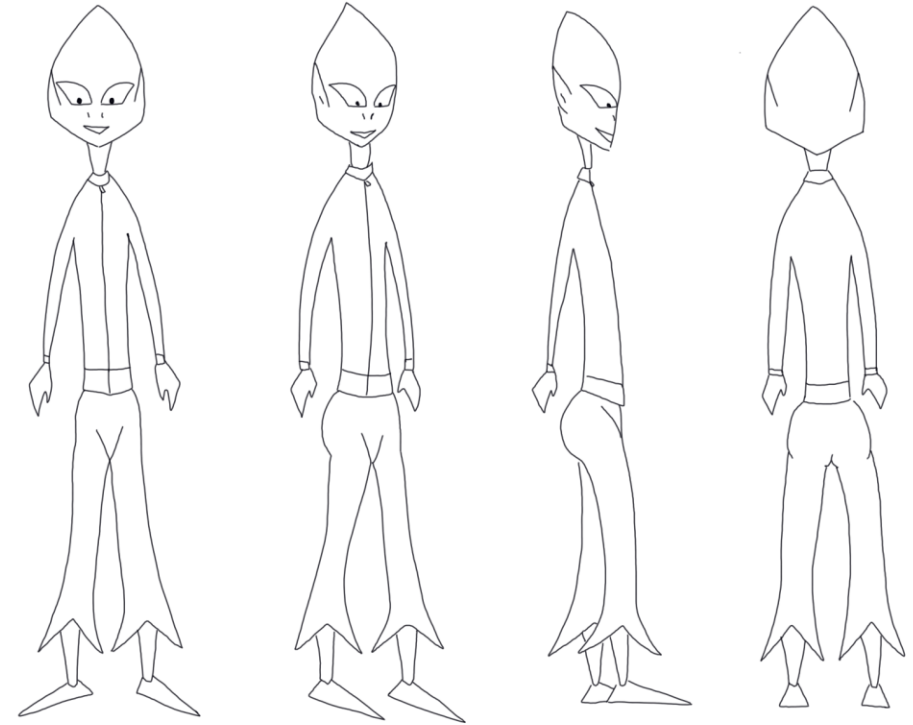
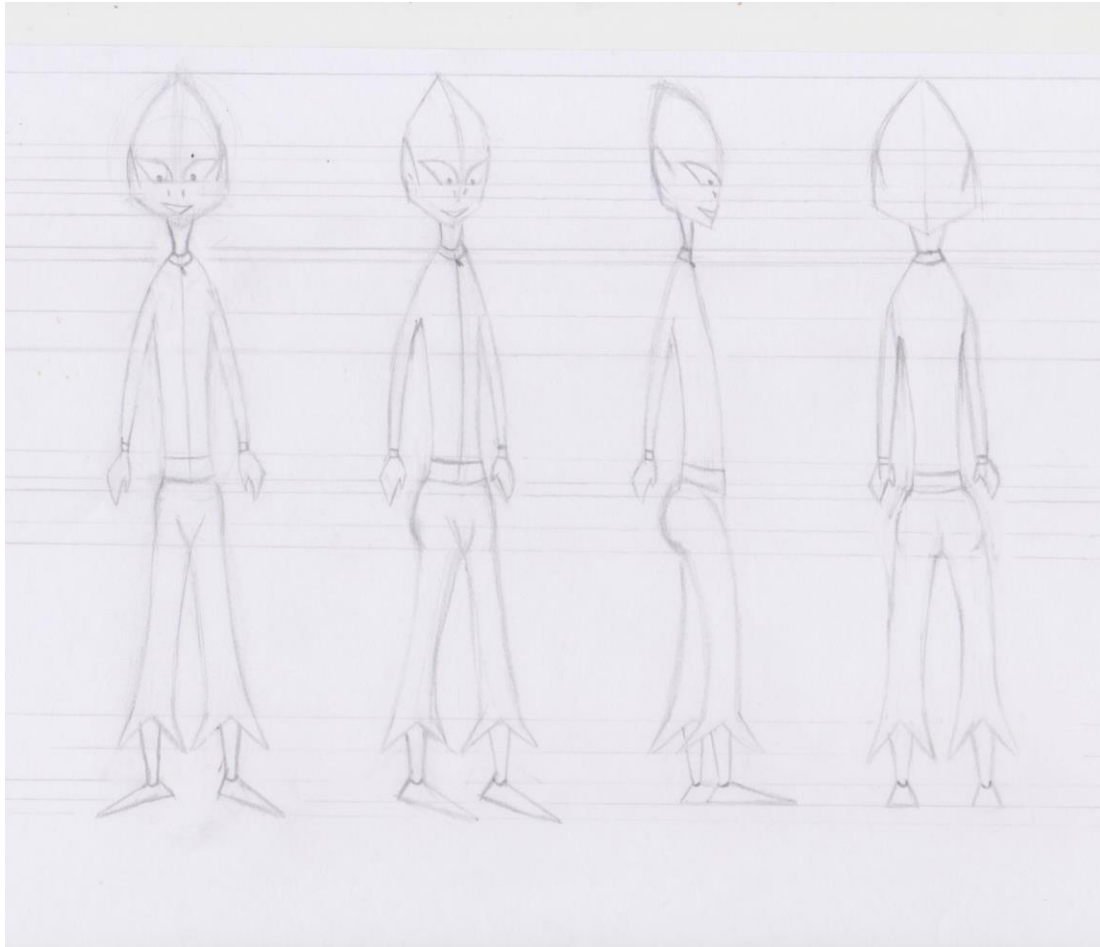
MOVIMIENTOS DE ADALAIDE



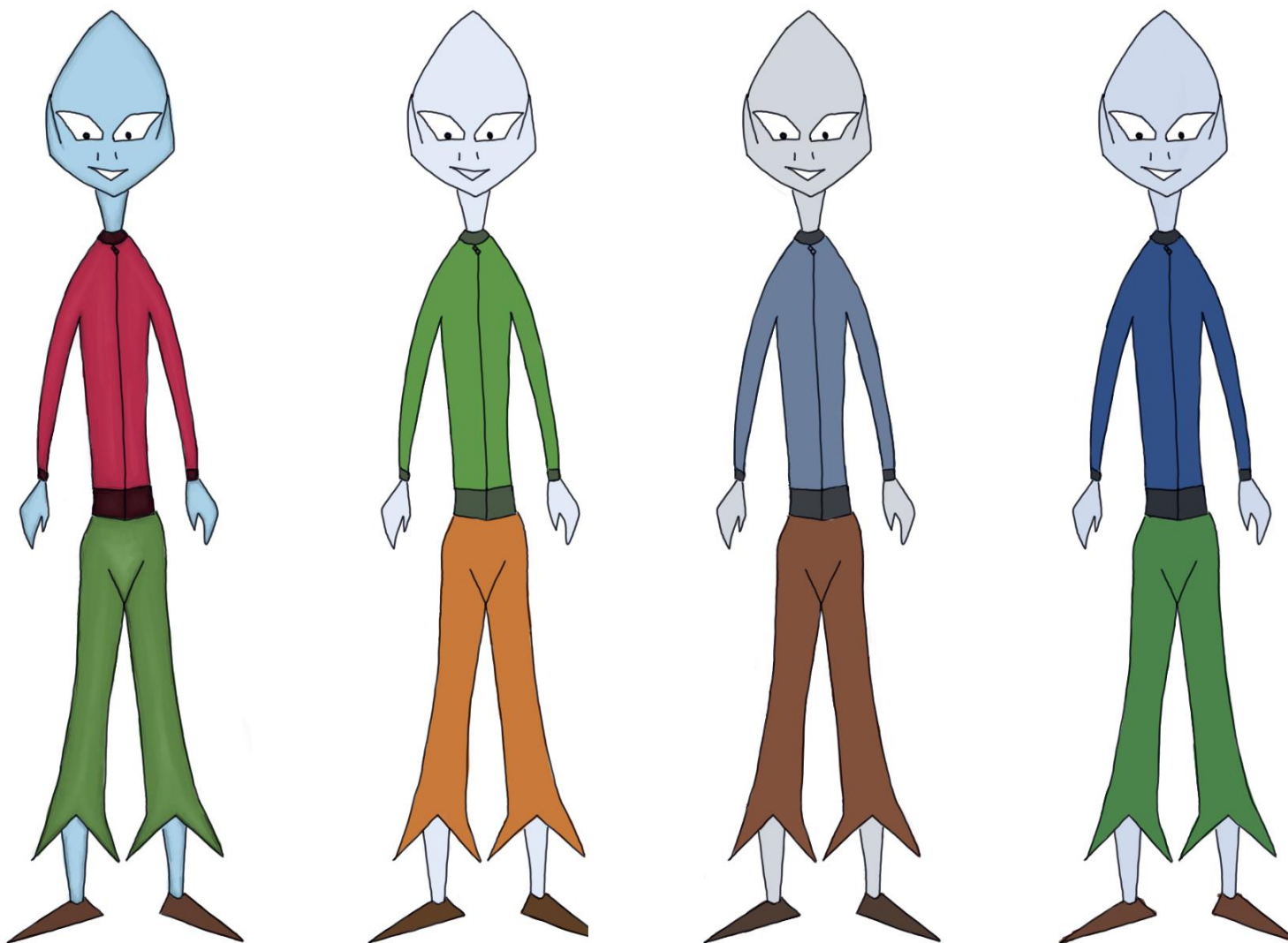
ADALAIDE Y SUS EXRESIONES



BOCETOS DE ANDRÓMEDA



TURN AROUND DE ANDRÓMEDA



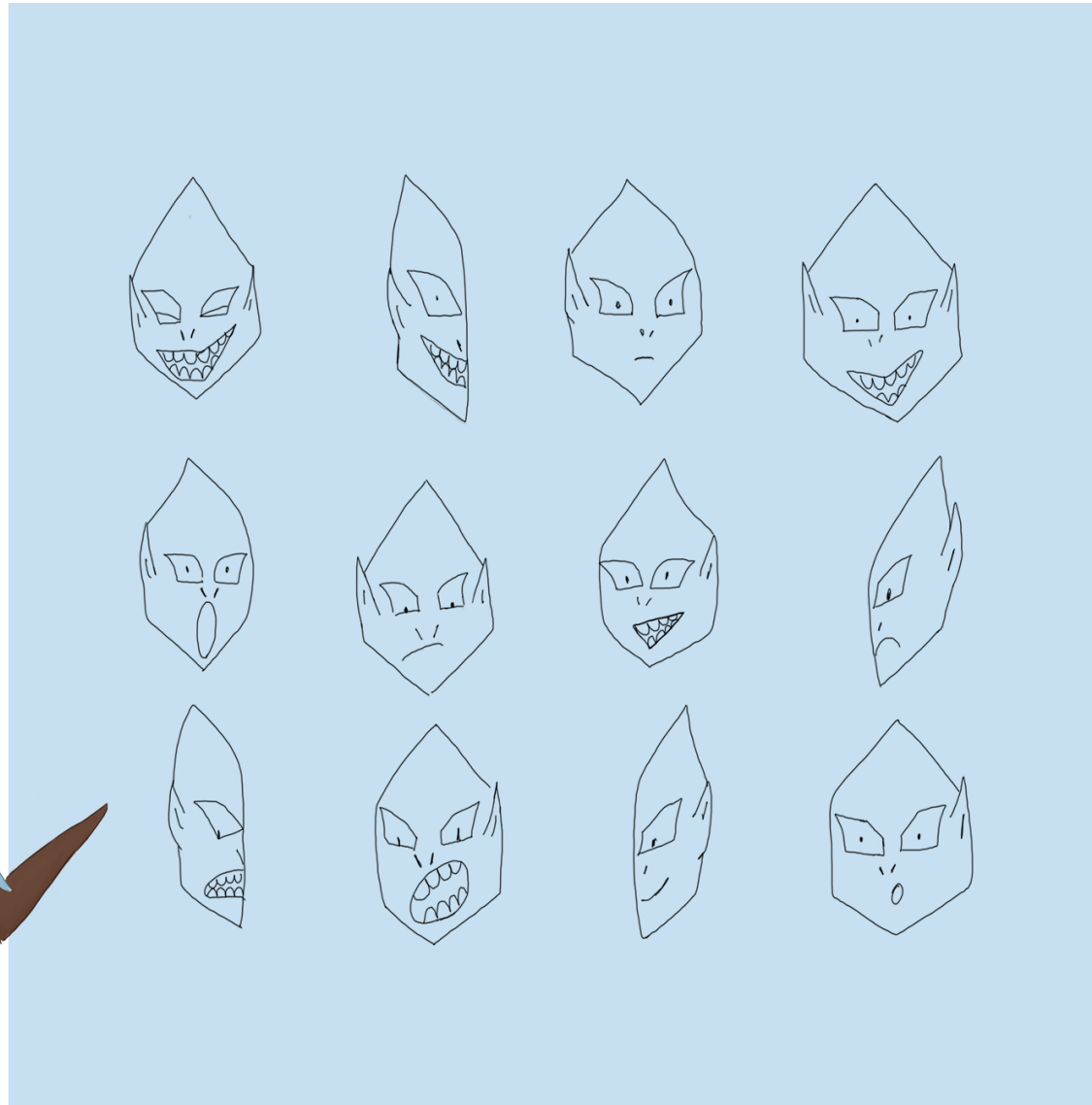
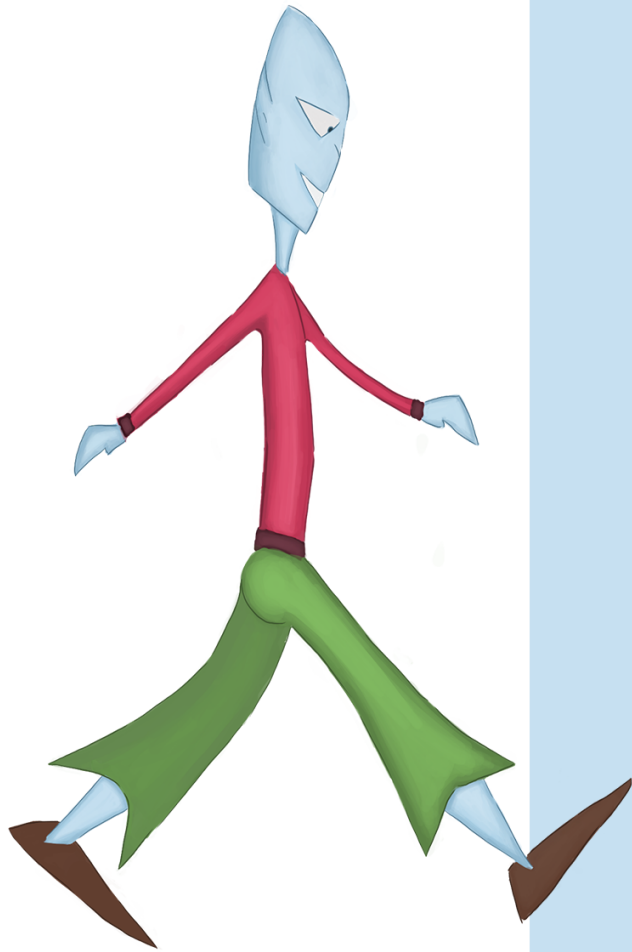
ANDRÓMEDA



DISEÑO DEFINITIVO DE ANDRÓMEDA



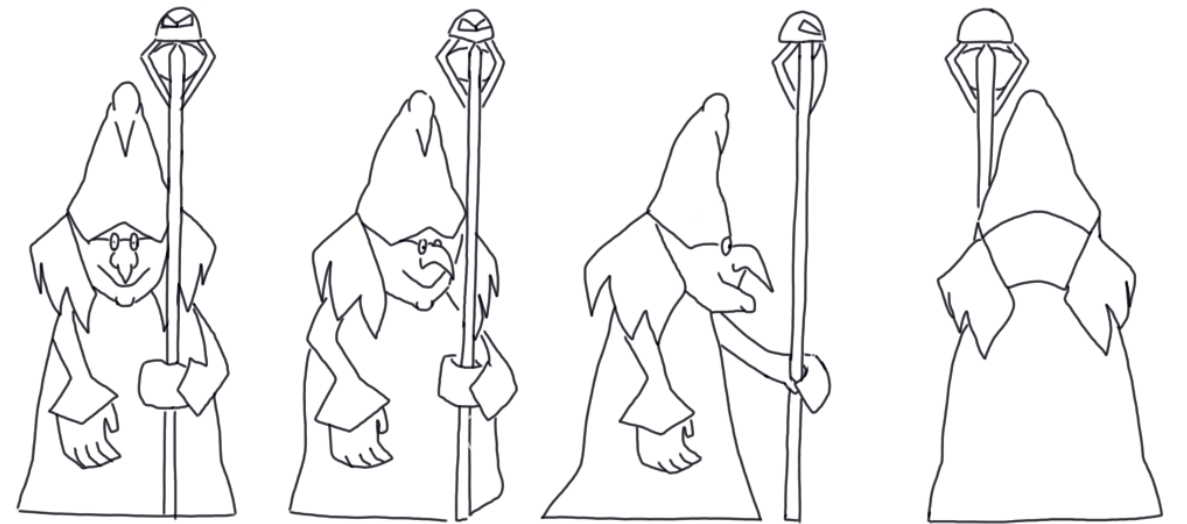
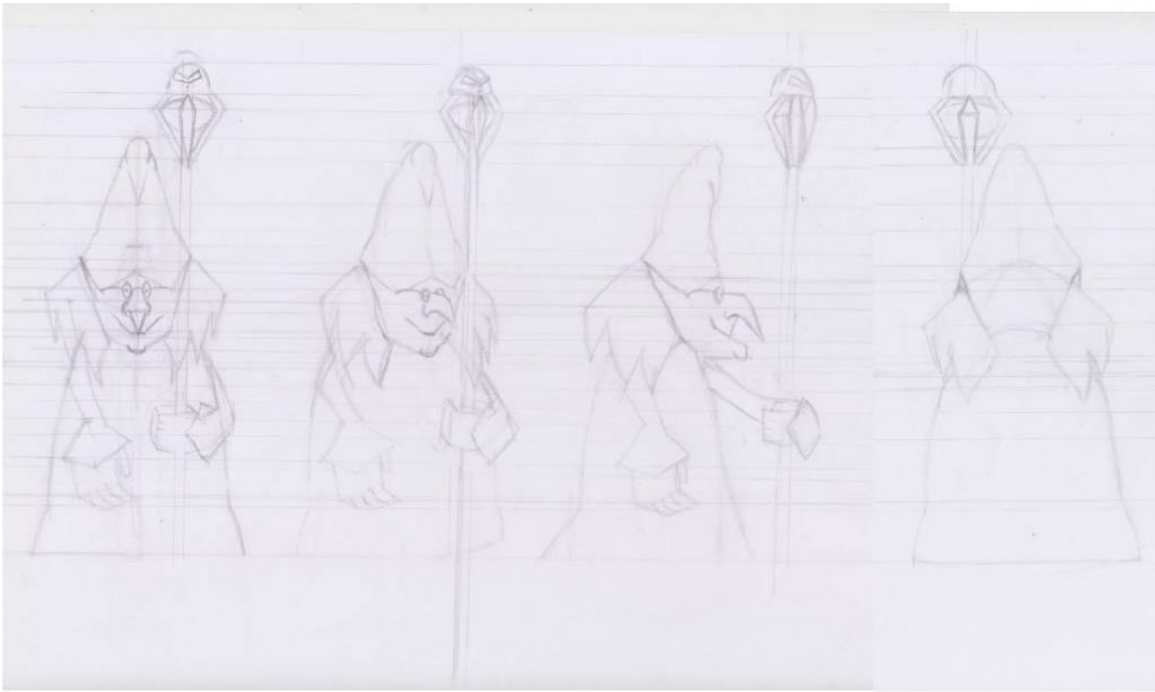
MOVIMIENTOS DE ANDRÓMEDA



ANDRÓMEDA Y SUS EXPRESIONES



BOCETOS DE ABRAXAS



TURN AROUND DE ABRAXAS



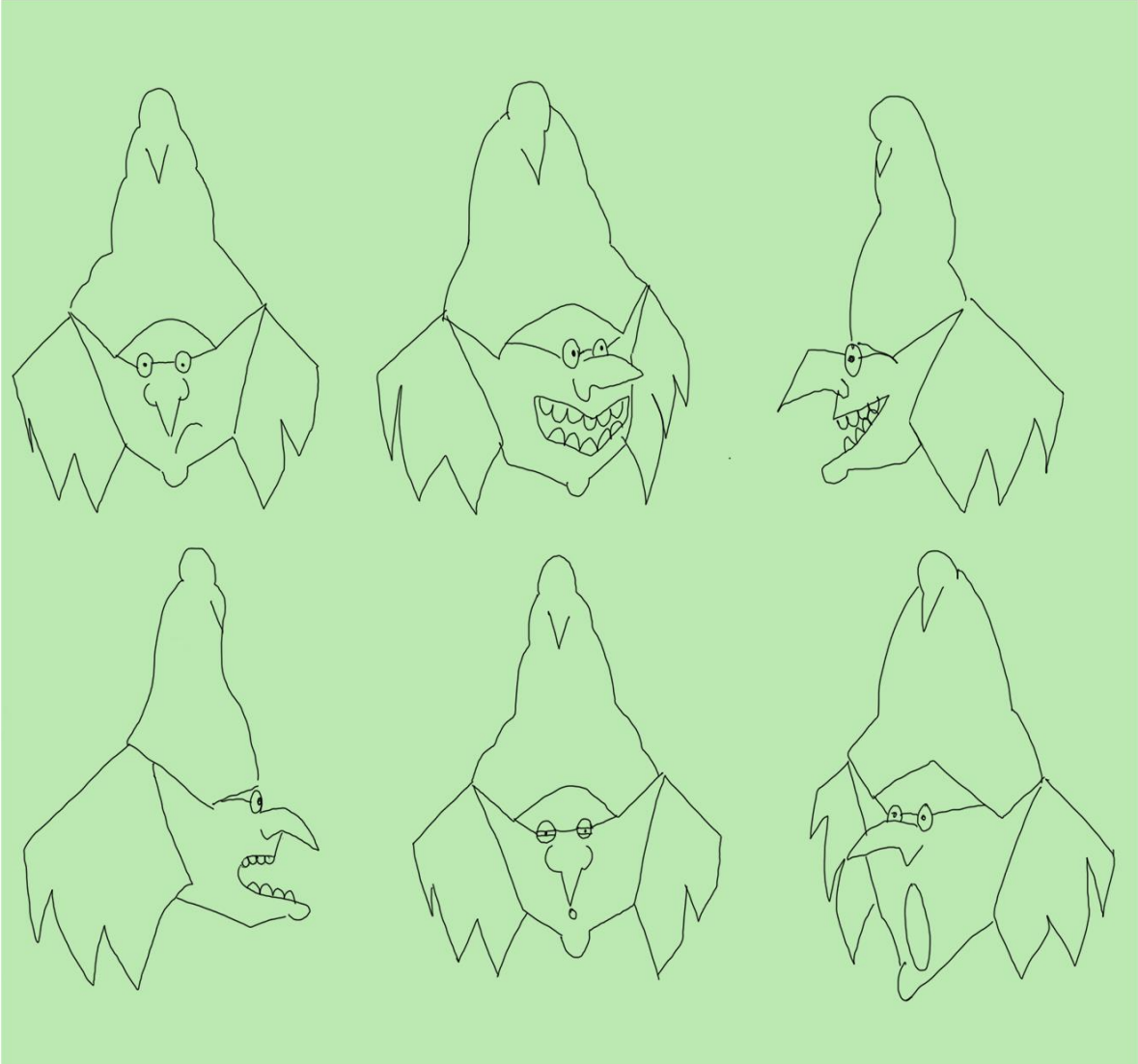
ABRAXAS

DISEÑO DEFINITIVO DE ABRAXAS

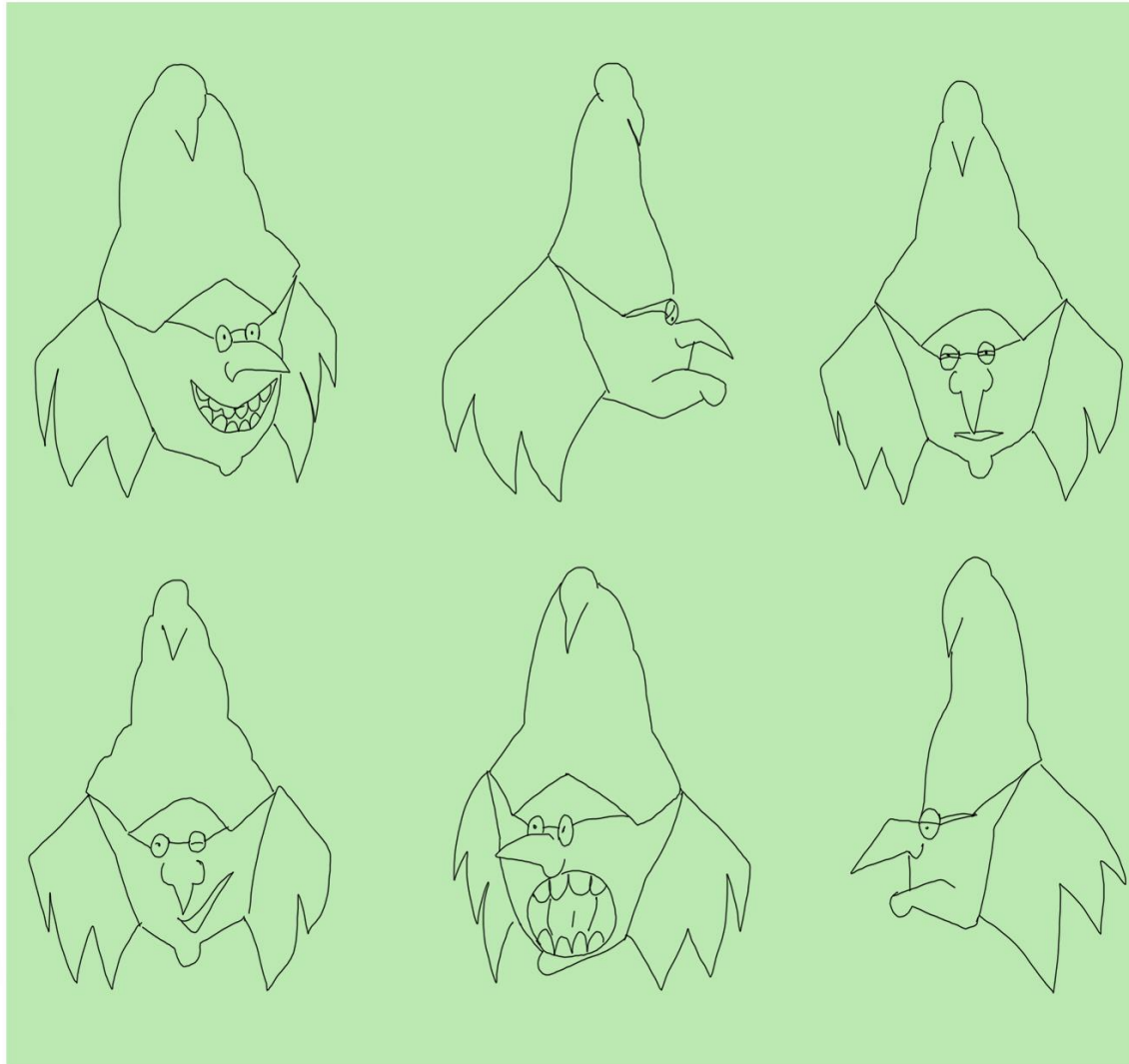




MOVIMIENTOS DE ABRAXAS



ABRAXAS Y SUS ESPRESIONES



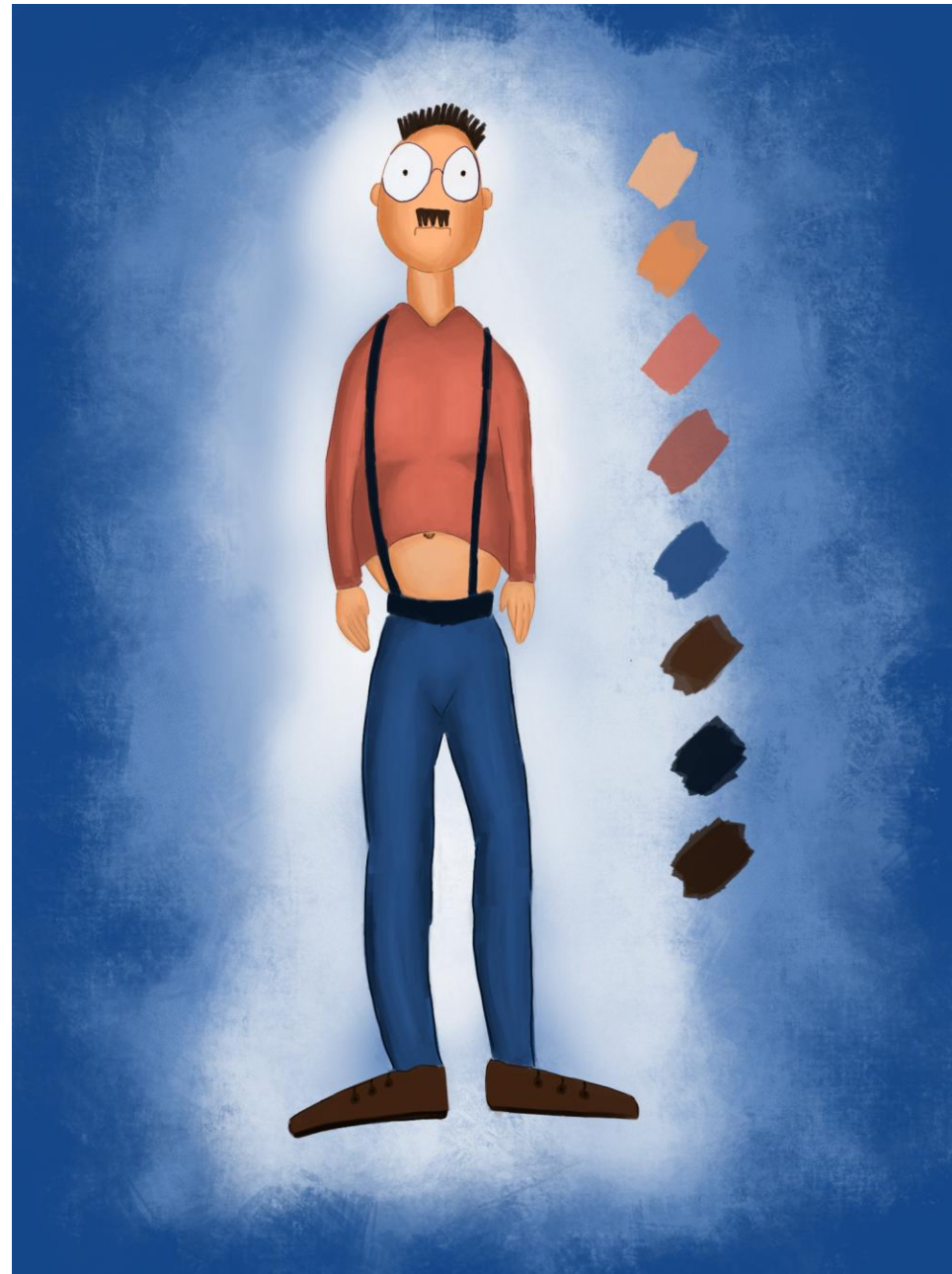
ABRAXAS Y SUS EXPRESIONES

CORVUS





CALISEOPEA



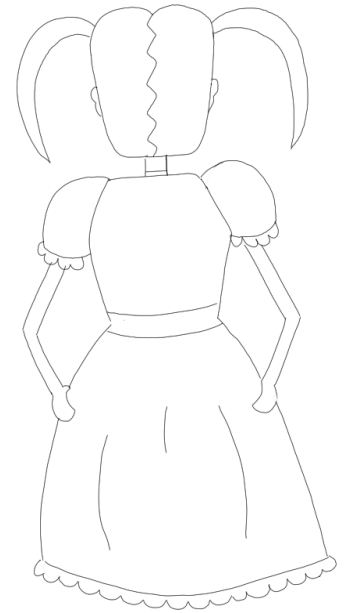
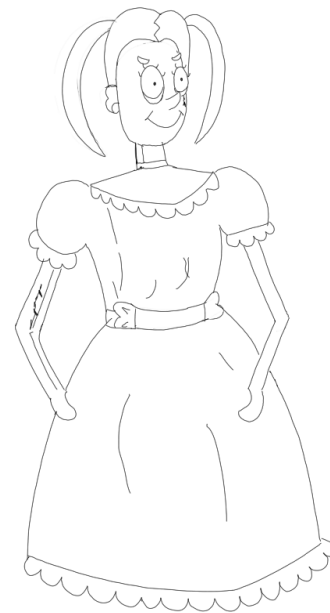
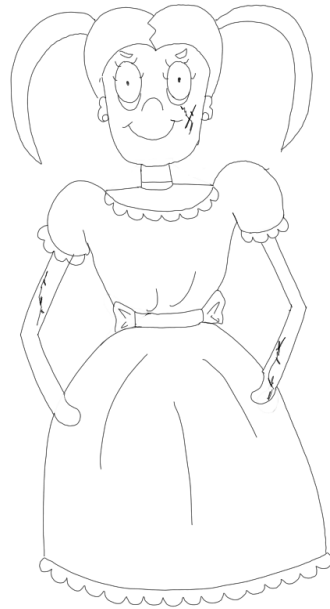
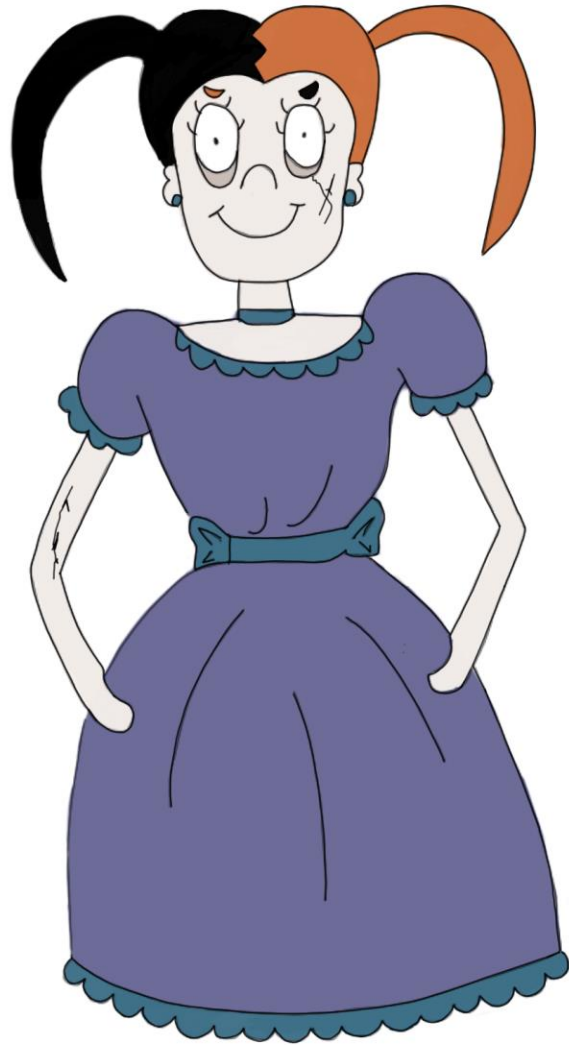
AMBROSIO



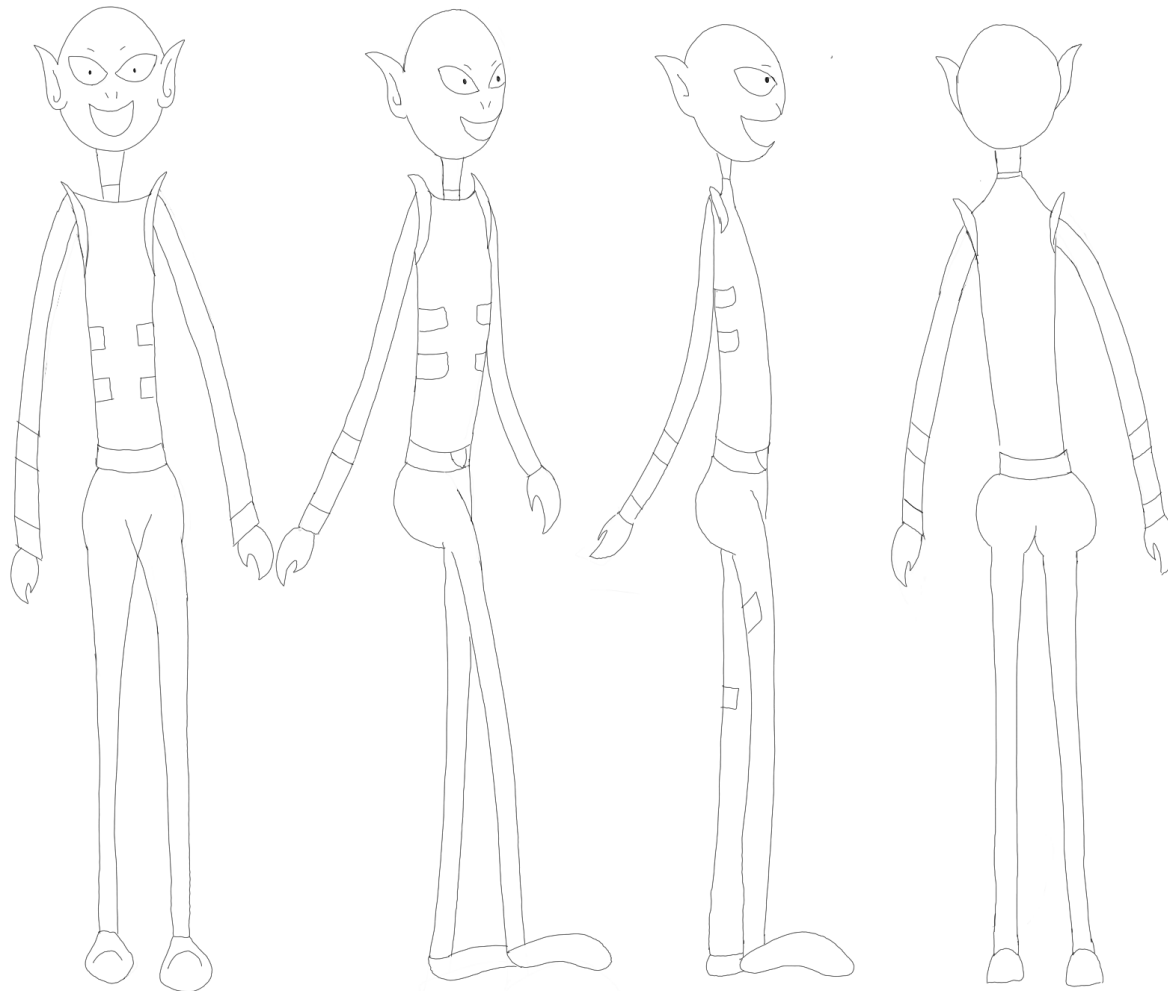
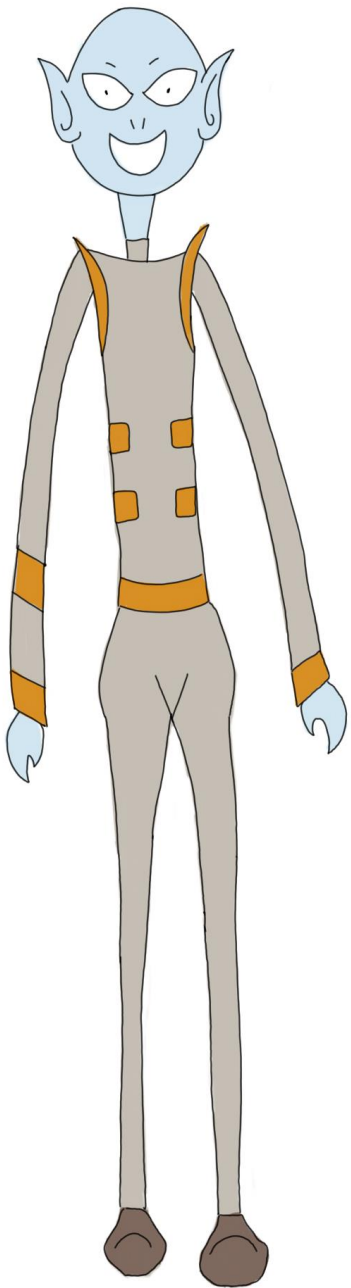
LINE UP



ARTE FINAL



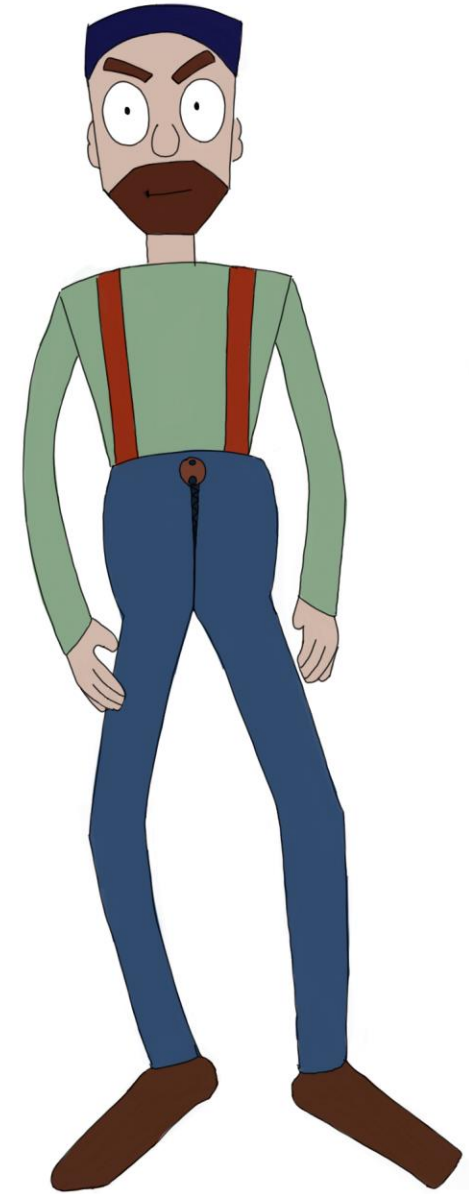
DISEÑO AL TERNATIVO DE ADALAIDE Y TURN AROUND



DISEÑO ALTERNATIVO DE ANDRÓMEDA Y TURN AROUND



DISEÑO ALTERNATIVO DE ABRAXAS Y TURN AROUND



CALISEOPEA, CORVUS Y AMBROSIO EN SUS VERSIONES ALTERANTIVAS



LINE UP ALTERNATIVO



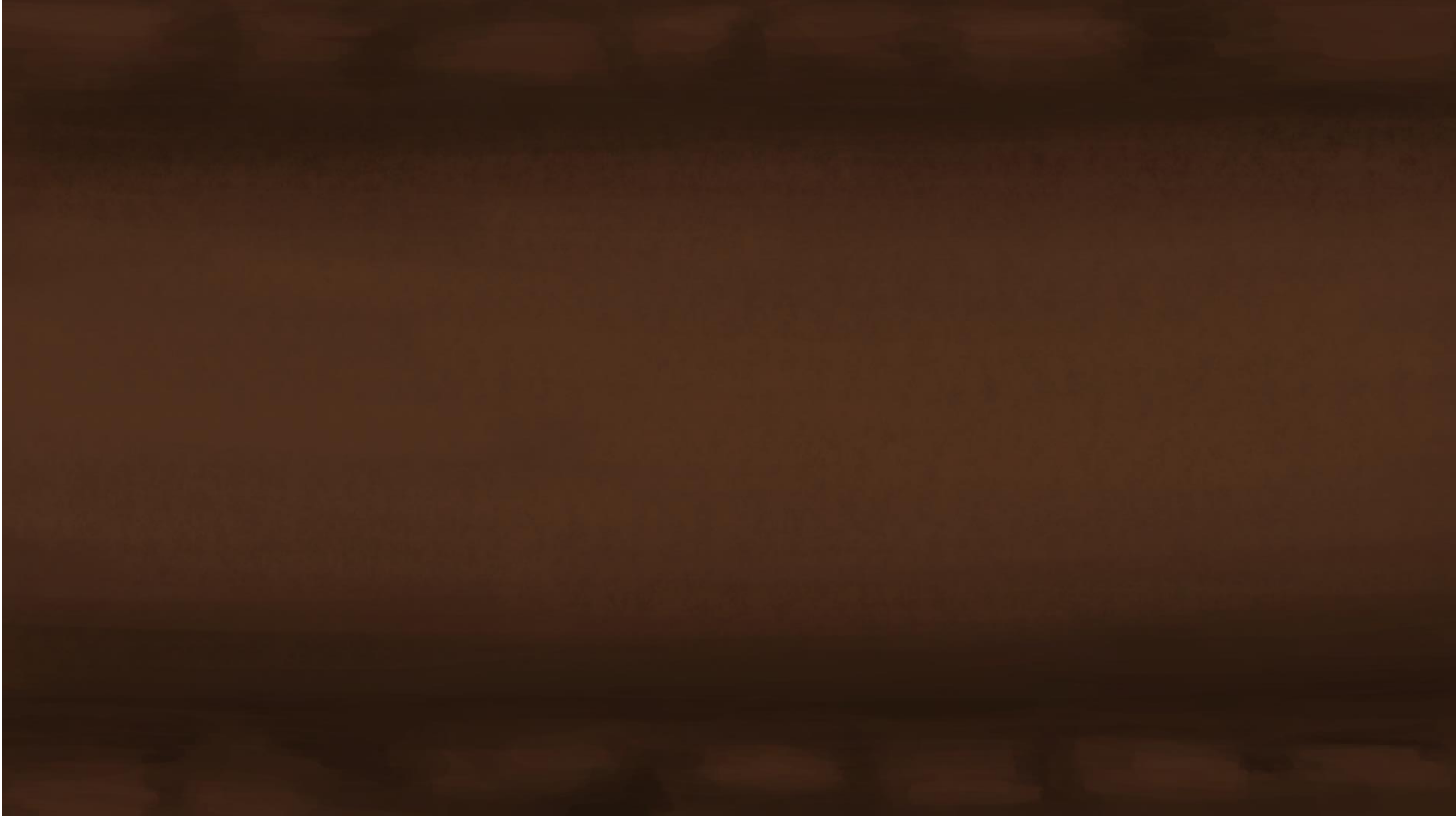
LA IGLESIA



LA IGLESIA



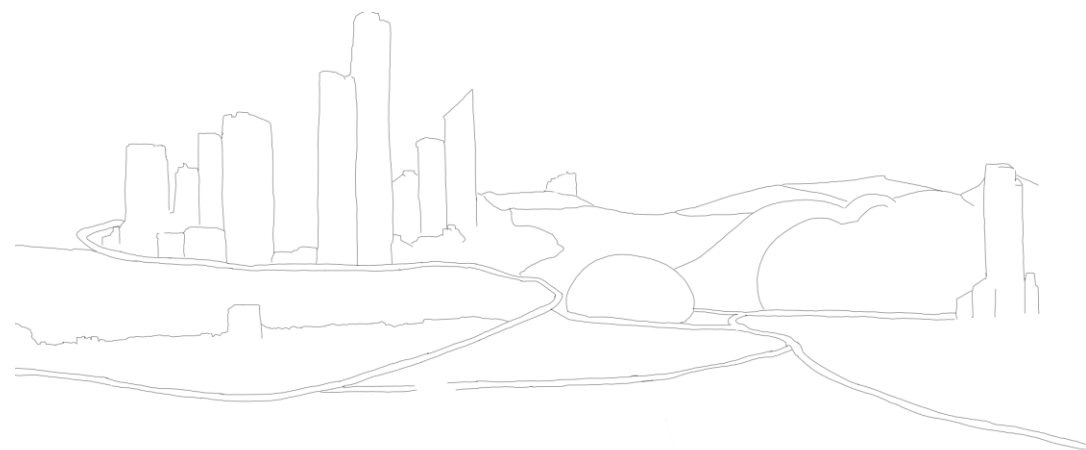
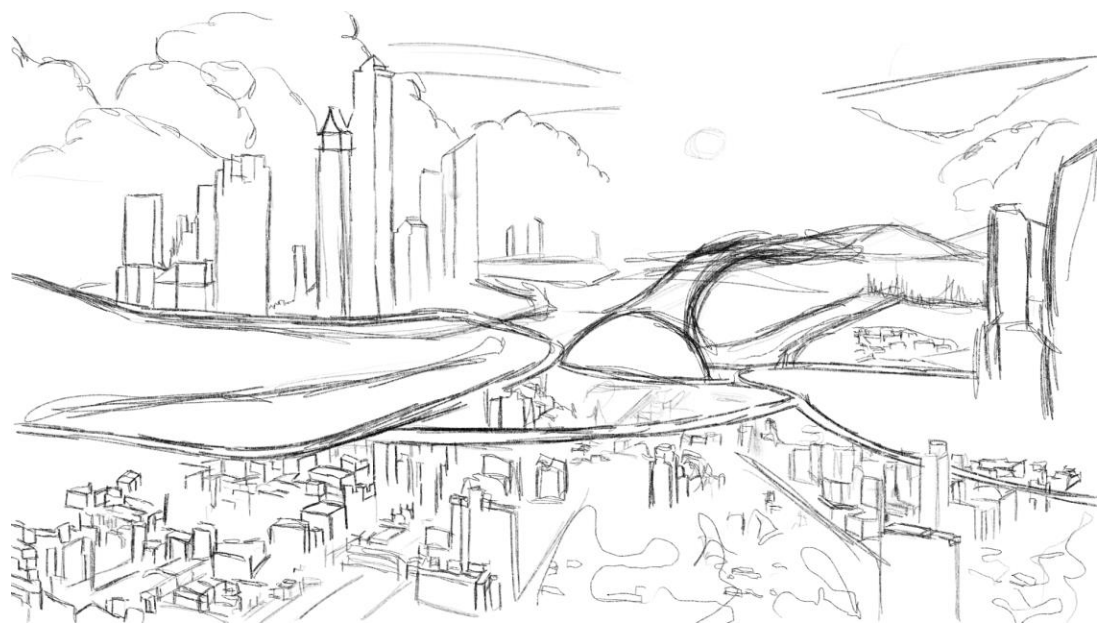
PASILLO INTERIOR DE LA IGLESIA



PASILLO INTERIOR DE LA IGLESIA







LA GRAN CIUDAD

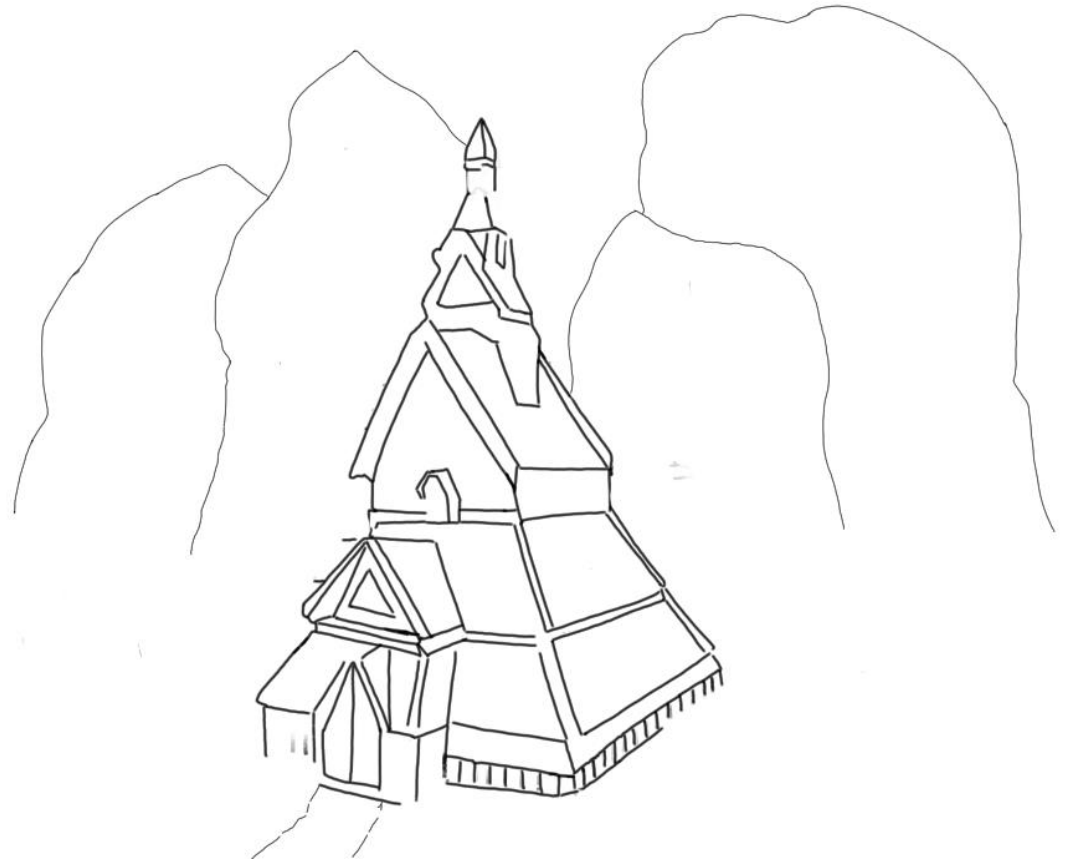
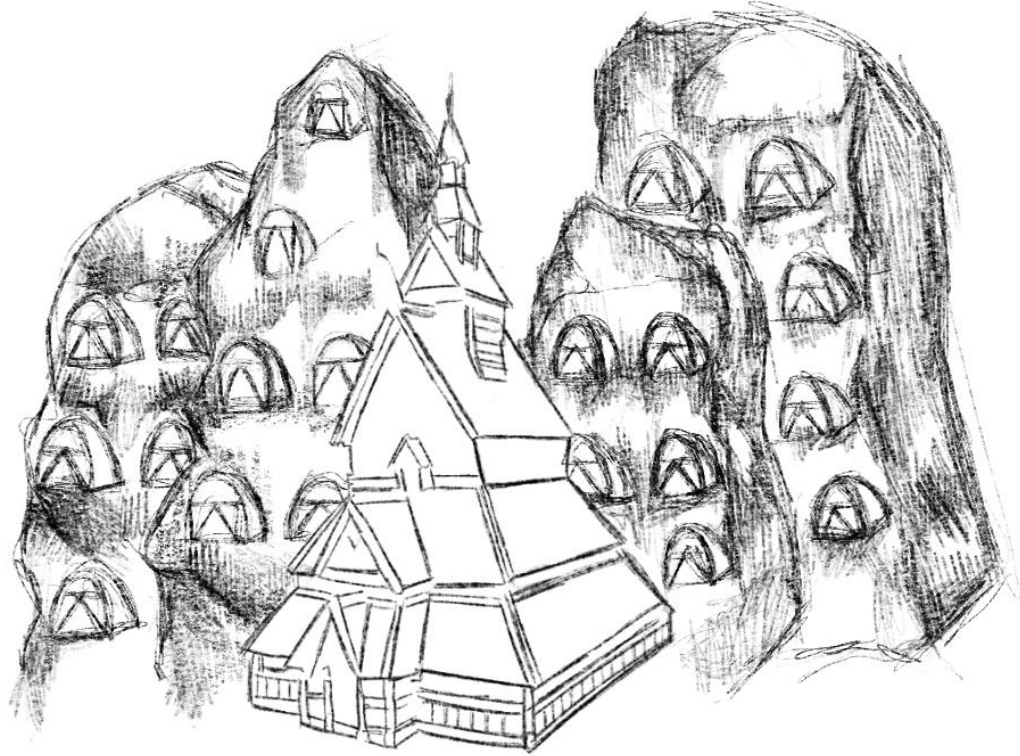


LA GRAN CIUDAD









TEMPLO Y COMUNA



TEMPLO Y COMUNA