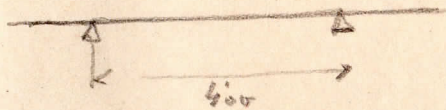


G1 Jansen's facade - 10. July - 1945

$$\left. \begin{matrix} 1200 \\ 45 \\ 60 \end{matrix} \right\} \begin{matrix} v = 0.423 \\ \lambda = 0.00217 \\ \mu = 0.130 \end{matrix}$$



Kern moment $M_k = 0.25 \times 300 \times 1600 = 1200 \text{ K.m}$

$$\frac{p l^2}{12} = \frac{1200 \times 4^2}{12} = 1600 \text{ K.m} \quad \sqrt{\frac{M}{b}} = \sqrt{\frac{160000}{60}} = \sqrt{2666} \approx 52$$

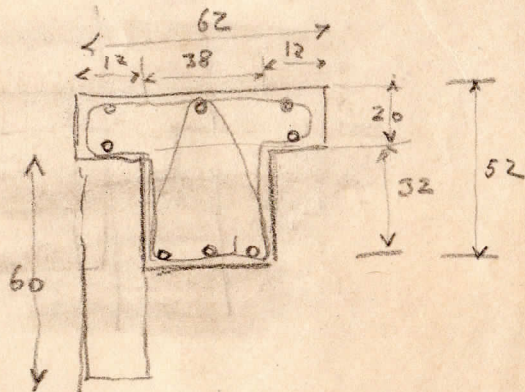
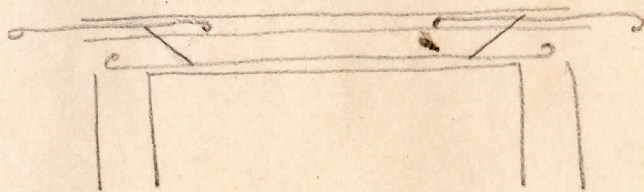
$$\left\{ \begin{matrix} h = 0.423 \times 52 = 21.99 \\ r = 0.130 \times 52 = 6.76 \approx 3 \phi 12 \end{matrix} \right.$$

$$\frac{b l^2}{10} = \frac{1200 \times 6^2}{10} = 1920 \text{ K.m} \quad \sqrt{\frac{M}{b}} = \sqrt{\frac{192000}{60}} = \sqrt{3200} \approx 52$$

$$\left\{ \begin{matrix} h = 0.423 \times 52 = 21.99 \\ r = 0.130 \times 52 = 6.76 \approx 3 \phi 12 \end{matrix} \right.$$

Director J. Rosta

1945 July 10



$$\frac{62}{38}$$

Arquitecto: J. Rieta Siser.

Valencia 20 Junio 1936.

