

PROYECTO DE EDIFICIO
ALMACÉN

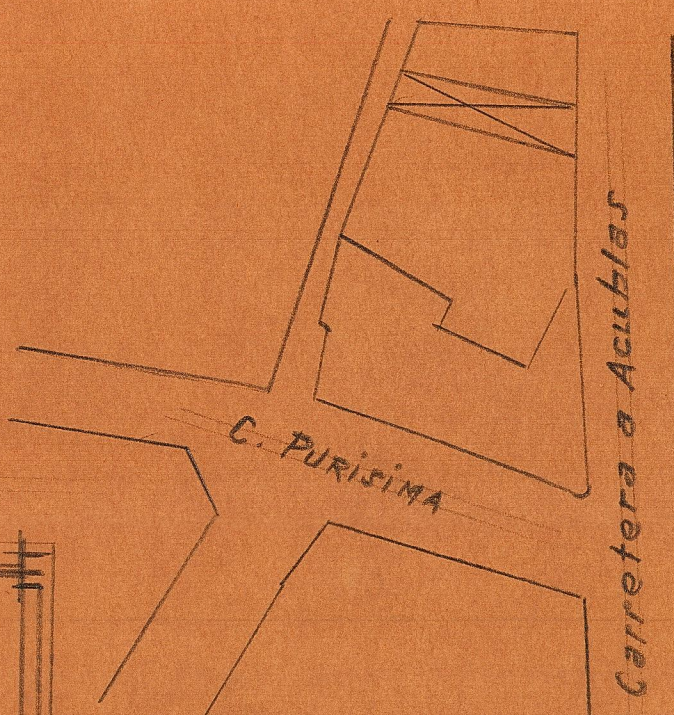
LIRIA

Enramado cubierta árabe

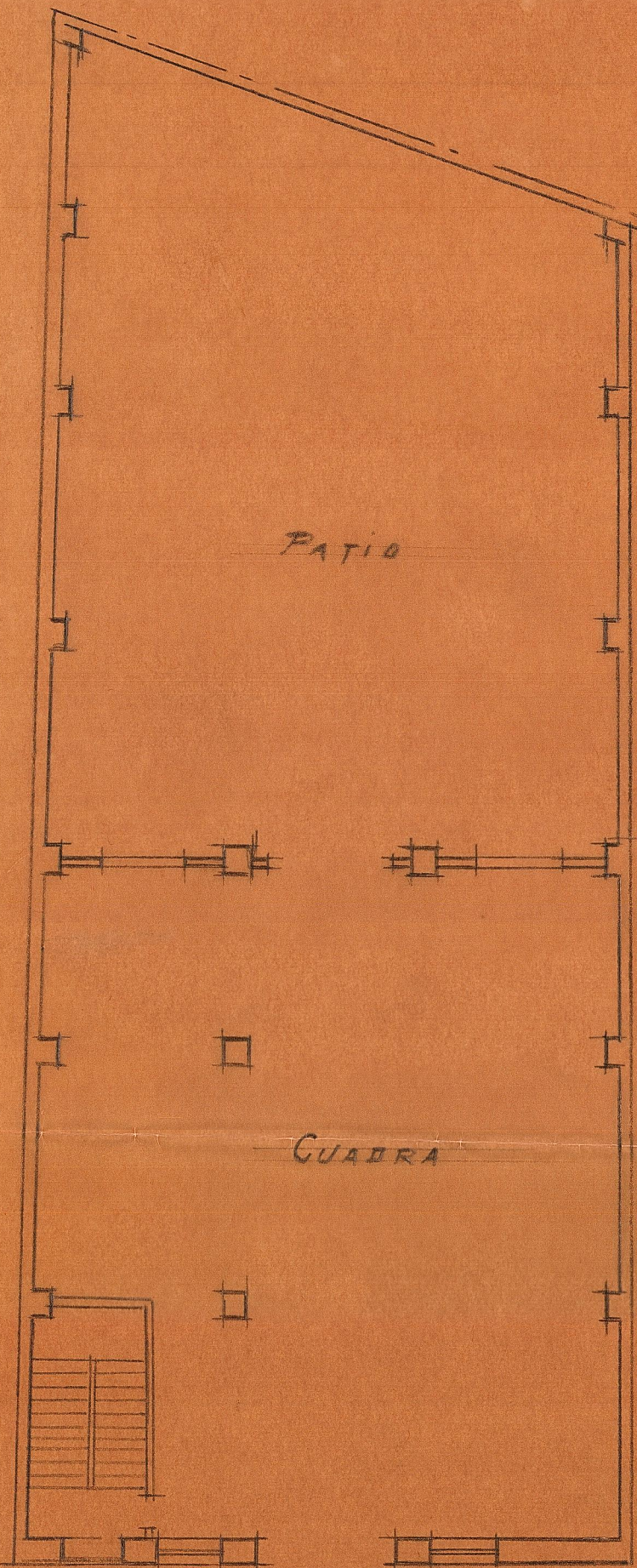
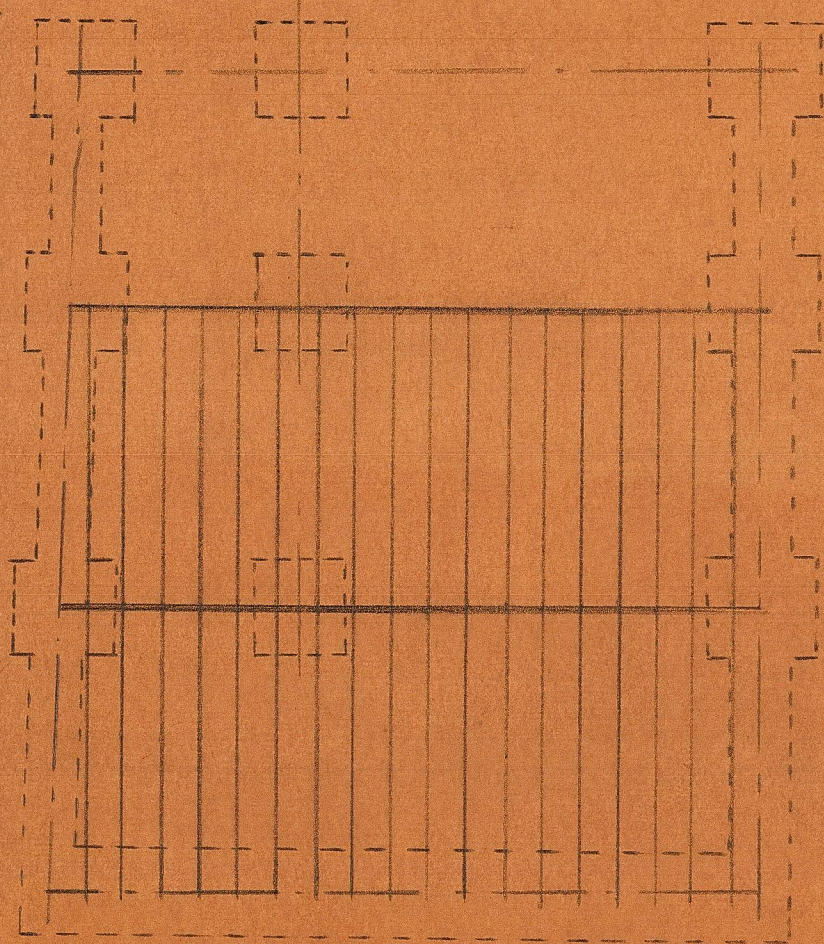
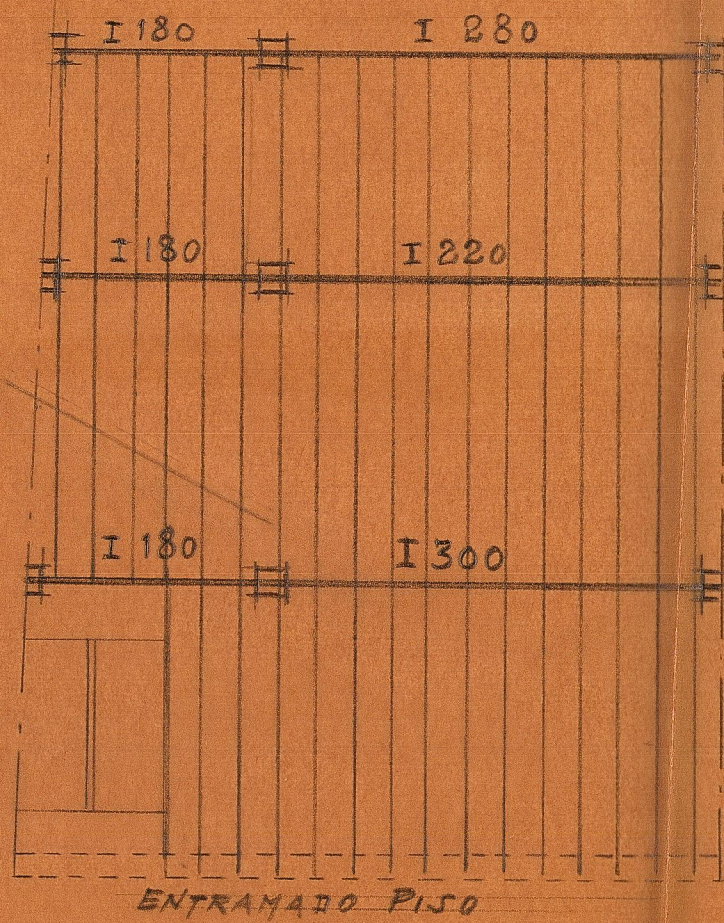
EMPLAZAMIENTO

E. 1:1000

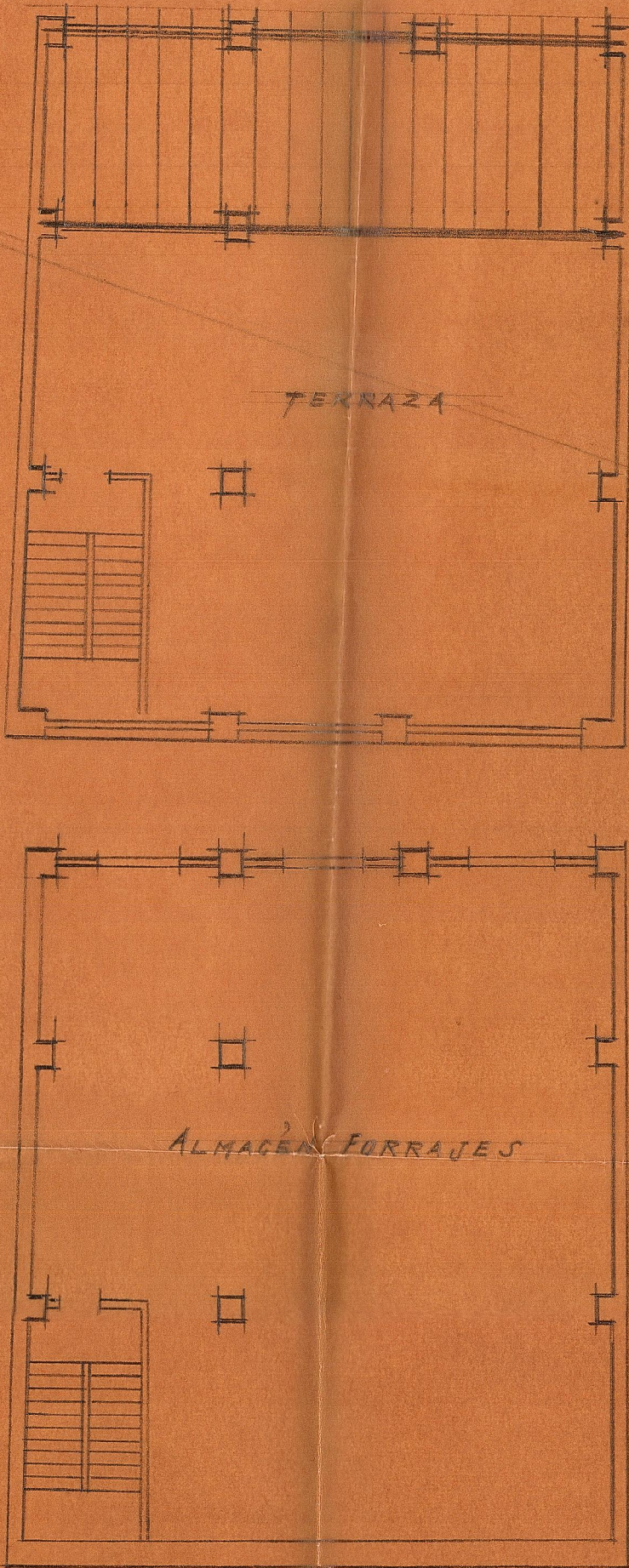
Escala 1:100
Valencia Marzo 1944
A. Arquitecto



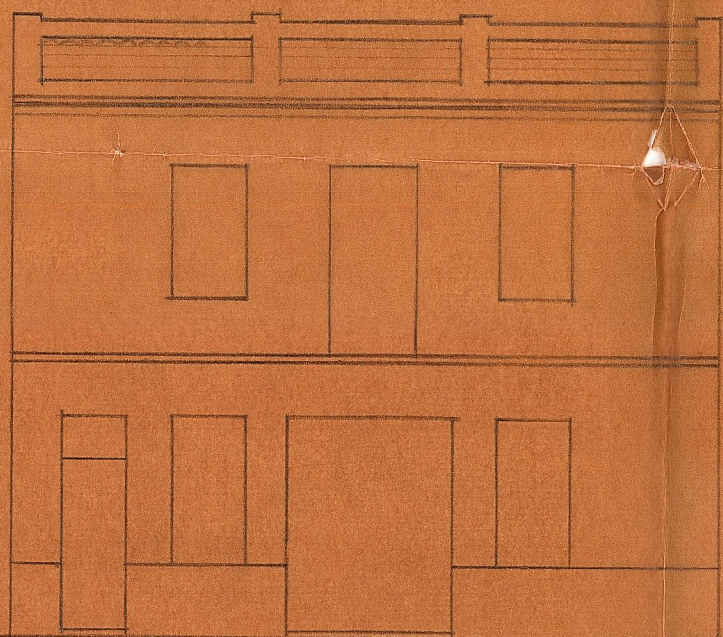
ENTRAMADO TERRAZA



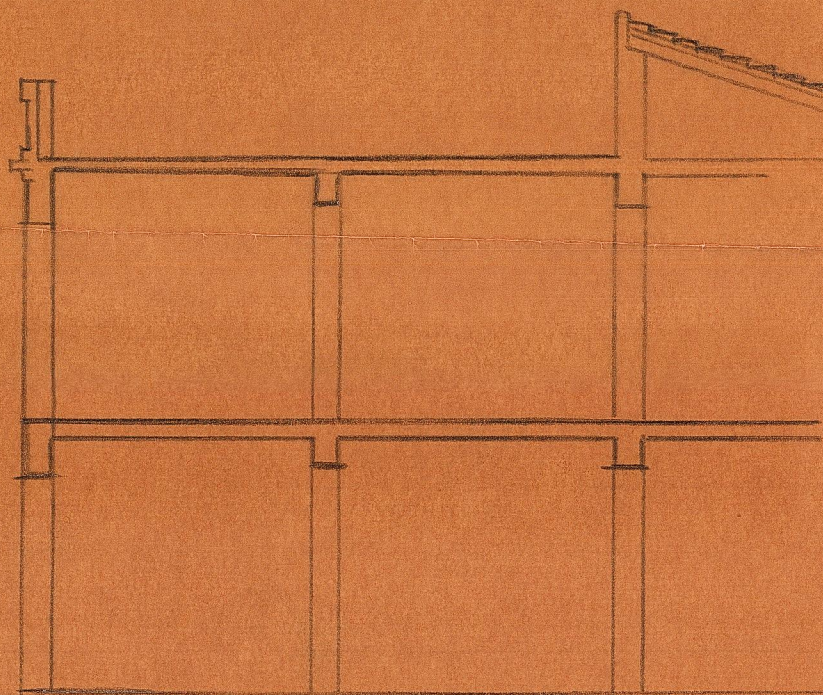
PLANTA BAJA



PISO ALTO



FACHADA



SECCIÓN