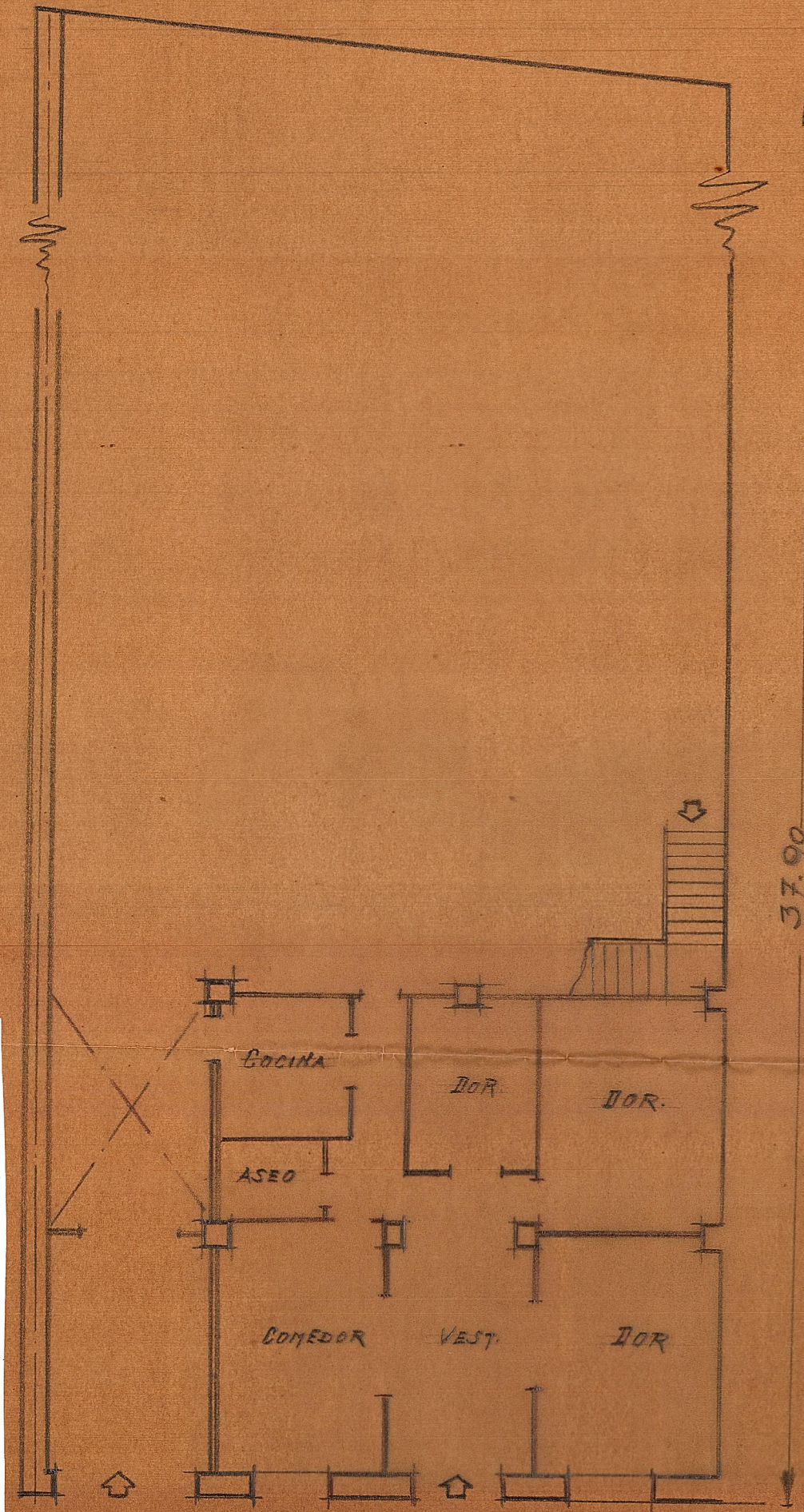


PROYECTO DE EDIFICIO VIVIENDA  
 PARA D. Salvador Alemany  
 en MONSERRAT

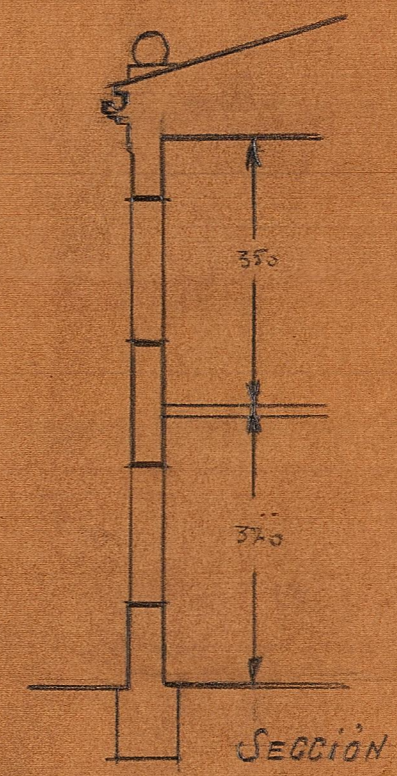


PLANTA BAJA

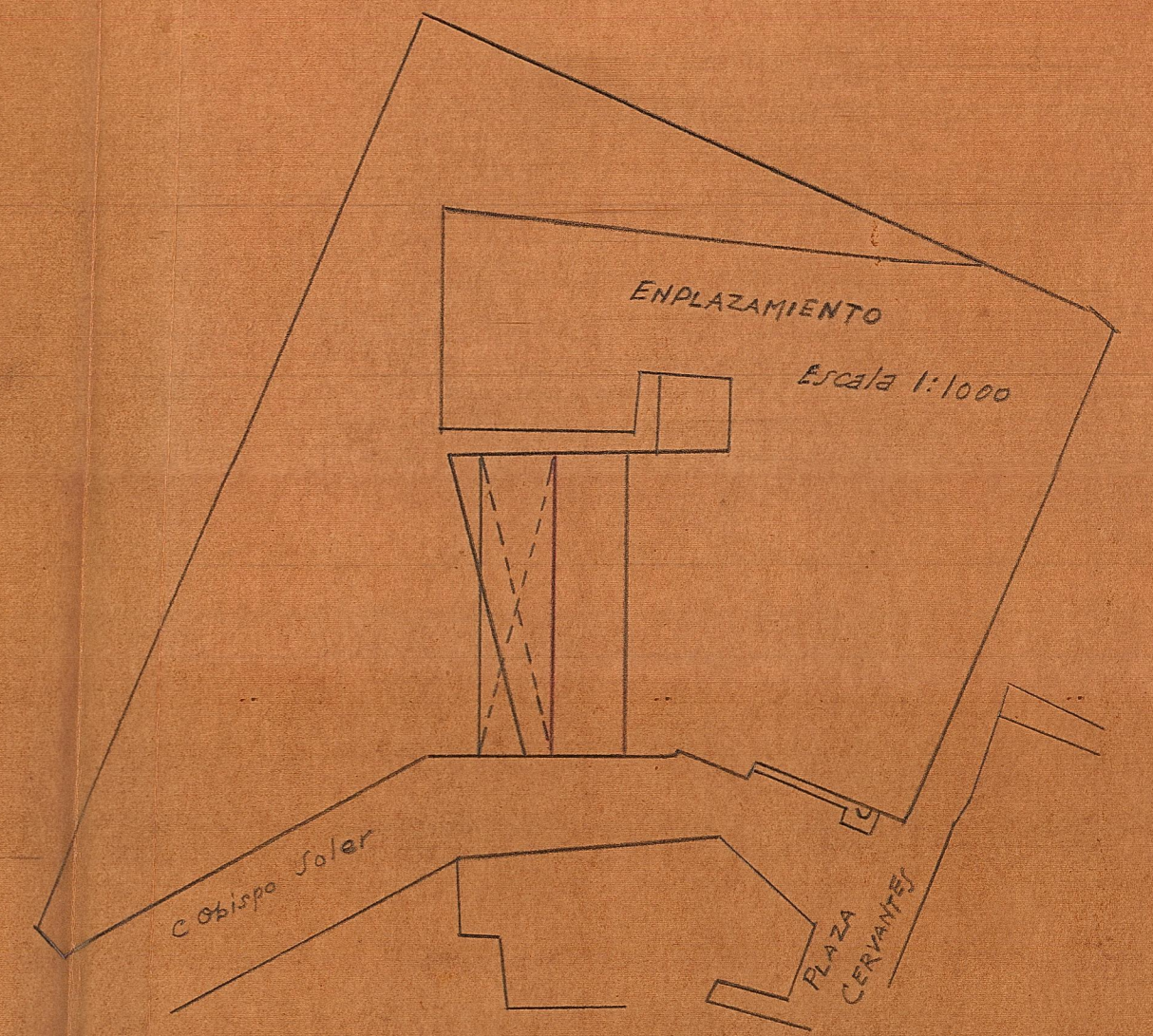


FACHADA

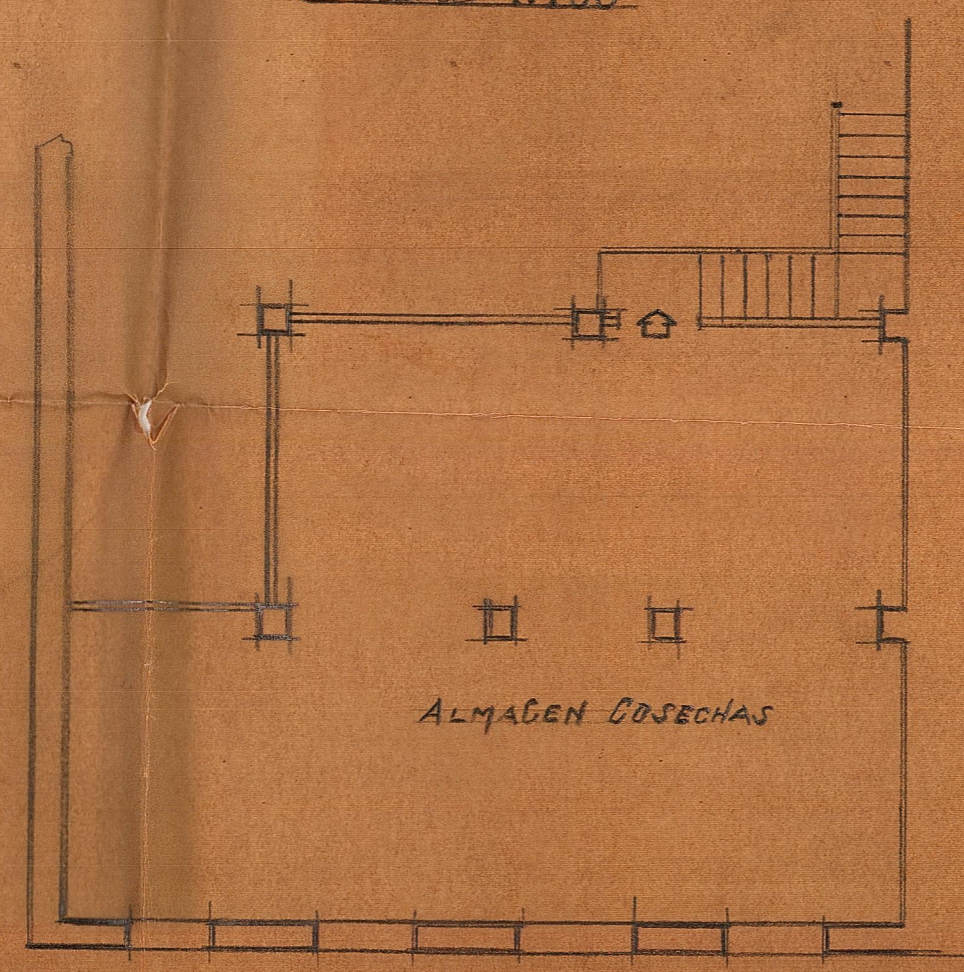
Escala 1:100



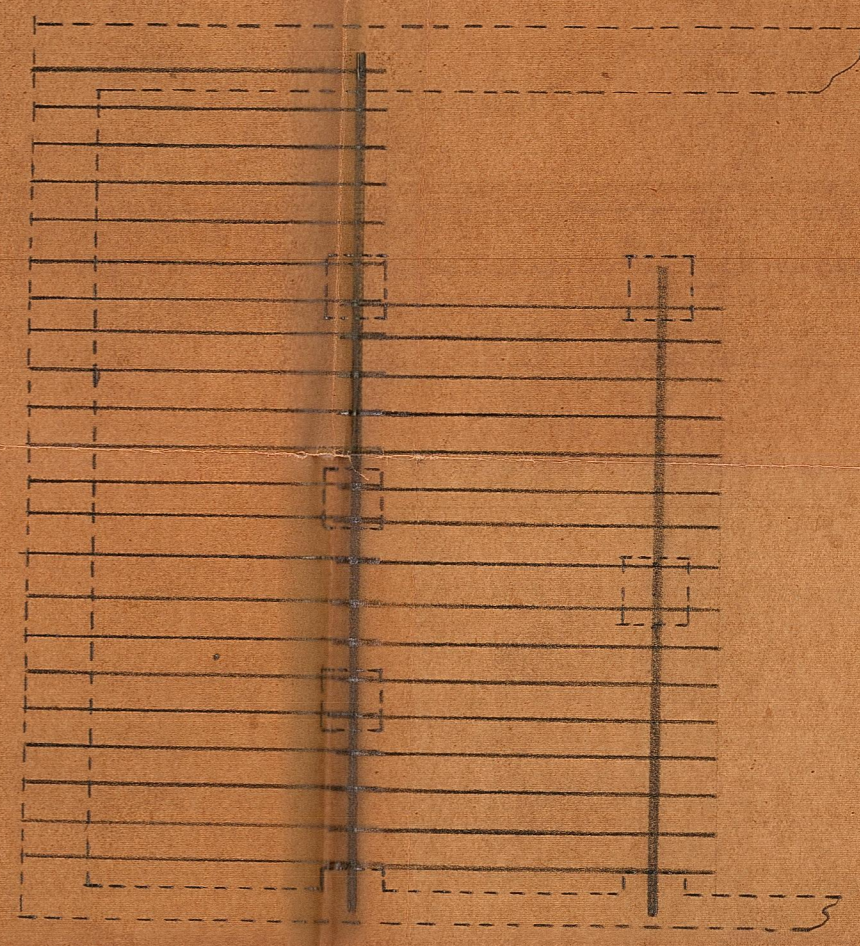
SECCION



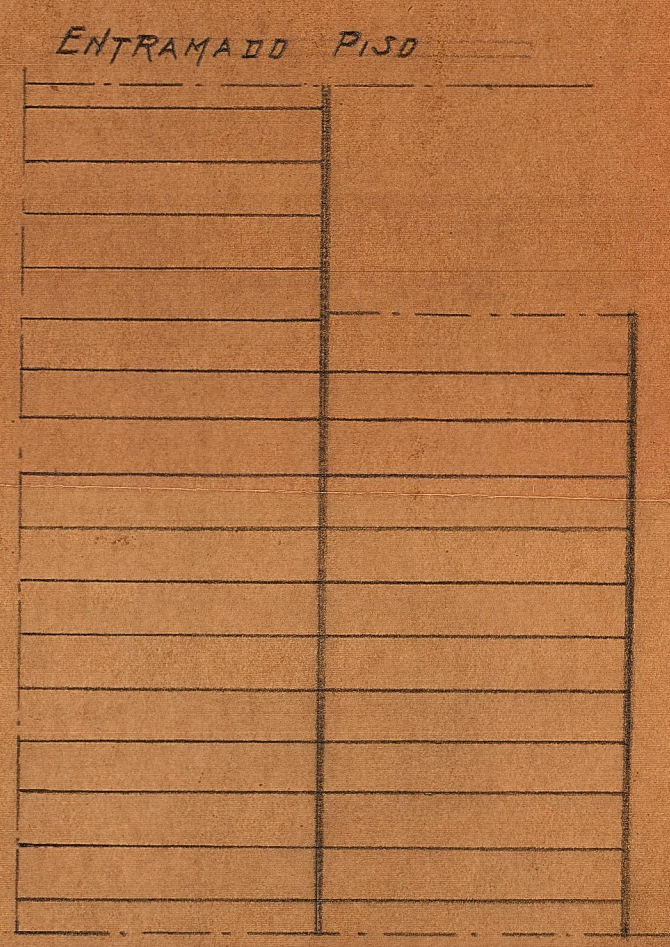
ENPLAZAMIENTO  
 Escala 1:1000



PLANTA ALTA



CIMENTOS y ENTRAMADO CUBIERTA



ENTRAMADO PISO

Valencia Octubre 1943  
 El Arquitecto