

Document downloaded from:

<http://hdl.handle.net/10251/140211>

This paper must be cited as:

Bailo Ballarín, E.; Gelonch, J.; Romero Vivó, S. (10-2). A first cubic upper bound on the local reachability index for some positive 2-D systems. *Revista de la Real Academia de Ciencias Exactas Físicas y Naturales Serie A Matemáticas*. 113(4):3767-3784.
<https://doi.org/10.1007/s13398-019-00699-0>



The final publication is available at

<https://doi.org/10.1007/s13398-019-00699-0>

Copyright Springer-Verlag

Additional Information

A first cubic upper bound on the local reachability index for some positive 2-D systems

Esteban Bailo · Josep Gelonch · Sergio Romero-Vivó

Received: date / Accepted: date

Abstract The calculation of the smallest number of steps needed to deterministically reach all local states of an n th-order positive 2-D system, which is called local reachability index (I_{LR}) of that system, was recently tackled by means of the use of a suitable composition table. The greatest index I_{LR} obtained in the previous literature was $n + 3(\lfloor n/2 \rfloor)^2$ for some appropriated values of n . Taking as a basis both a combinatorial approach of such systems and the construction of suitable geometric sets in the plane, an upper bound on I_{LR} depending on the dimension n for a new family of systems is characterized. The 2-D influence digraph of this family of order $n \geq 6$ consists of two subdigraphs corresponding to a unique source s . The first one is a cycle involving the first n_1 vertices and is connected to the another subdigraph through the 1-arc $(2, n_1 + n_2)$, being the natural numbers n_1 and n_2 such that $n_1 > n_2 \geq 2$ and $n - n_1 - n_2 \geq 1$. The second one has two main cycles, a cycle where only the remaining vertices $n_1 + 1, \dots, n$ appear and a cycle containing only the vertices $n_1 + 1, \dots, n_1 + n_2 - 1$. Moreover, the last vertices are connected through the 2-arc $(n_1 + n_2 - 1, n)$. Furthermore, if $n \geq 12$ and is a multiple of 3, for appropriate n_1 and n_2 , the I_{LR} of that family is at least

“An earlier version of this paper was presented at the Conference Linear Algebra, Matrix Analysis and Applications. ALAMA2018, held in Sant Joan dAlacant on May/June 2018”.

Esteban Bailo, Josep Gelonch
Department de Matemàtica,
Universitat de Lleida,
Av. de l'Alcalde Rovira Roure, 191. 25198 Lleida. Spain.
E-mail: ebailo@matematica.udl.es, jgelonch@matematica.udl.es

S. Romero-Vivó
Instituto de Matemática Multidisciplinar,
Universitat Politècnica de València,
Camino de Vera, 14. 46022 Valencia. Spain.
E-mail: sromero@imm.upv.es
and Centro de Investigación Biomédica en Red de Diabetes y Enfermedades Metabólicas Asociadas (CIBERDEM), Instituto de Salud Carlos III, 28029 Madrid, Spain

cubic, exactly, it must be $\frac{n^3+9n^2+45n+108}{27}$, which shows that some local states can be deterministically reached much further than initially proposed in the literature.

Keywords Positive two dimensional (2-D) systems · Fornasini-Marchesini models · Hurwitz products · Influence digraph · Local reachability index · Composition table

Mathematics Subject Classification (2010) 05C99 · 15A48 · 93B03 · 93C55

1 Introduction

In this paper, we focus our attention on positive two-dimensional (2-D) systems described by the Fornasini-Marchesini state-space model (see [1] and [26]) which is as follows:

$$x_{i+1,j+1} = A_1x_{i+1,j} + A_2x_{i,j+1} + B_1u_{i+1,j} + B_2u_{i,j+1} \quad (1)$$

with local states $x_{.,.} \in \mathbb{R}_+^n$, inputs $u_{.,.} \in \mathbb{R}_+^m$, state matrices $A_1, A_2 \in \mathbb{R}_+^{n \times n}$, input matrices $B_1, B_2 \in \mathbb{R}_+^{n \times m}$ and initial global state $\chi_0 := \{x_{h,k} : (h,k) \in \mathcal{C}_0\}$ being $\mathcal{C}_0 := \{(h,k) : h, k \in \mathbb{Z}, h+k=0\}$. Let us denote these systems by (A_1, A_2, B_1, B_2) .

It is well-known that the nonnegativity condition yields a different treatment of these control systems based upon the theory of nonnegative matrices. In fact, in the last decade has been an increasing interest in the theory of positive systems (for example, see [4], [7], [8], [14] and [19]), which appear in many different real situations such as in economics, biological, environmental and chemical processes, among others (see [25], [33], [37], [38] and [43]). A considerable amount of literature has been published on the analysis of structural properties and more specifically on the reachability property (see [12], [13], [17], [23], [24], [32], [42] and [44]). In fact, it is still the subject of a detailed investigation (see [3], [5], [6], [15], [18], [22], [34], [35], [36], [40], [45] and [46], among others).

When dealing with positive 2-D discrete state-space models, the structural property of reachability is introduced both in a local form, which refers to single local states, and in a global form (see [29], [31] and [41]). Throughout this work, we pay heed to the study of the smallest number of steps needed to reach all local states of a system, that is, the local reachability index of that systems. This index plays an important role because it enables us to determine in a finite number of steps whether a system is locally reachable or not as well as to know how many separations sets at most are needed to achieve the states. Previous studies such as [10], [11], [16] and references therein, [20] and [21] have studied and reported that the reachability index for positive 1-D systems is always bounded by the dimension n . However, several attempts in two dimensional case (see [1], [2] and [9] and references therein) have been made to obtain a general formula depending on n on the local reachability

index for any positive 2-D systems. So far, despite the use of graph-theoretic techniques, to solve this question seems to be a nontrivial goal to accomplish due to its computational complexity (see [30]). In [39], an alternative method for determination of a lower reachability index and reachability index space for a positive second Fornasini-Marchesini model is proposed.

To the best of the authors' knowledge, the most promising tool used until now to tackle the study of the local reachability index is the composition table introduced in [2], which enables us to calculate easily the Hurwitz products involved in a reachability matrix in k -steps for a positive integer k . Besides that, from that instrument, it is possible to construct suitable geometric sets in the plane covering the greatest number of entries possible on such the table. This new geometrical approach allows us to reduce the positions on the table where local states can be deterministically reached and therefore, to construct families of systems with greatest local reachability index, even with a cubic local reachable index, as shown in this paper. More specifically, from now on, the local reachability index for a special class of positive 2-D systems is completely characterized in terms of the order $n \geq 6$ as well as of the natural numbers n_1 and n_2 determining their corresponding influence digraphs. Additionally, it is deduced that the absolute maximum value of I_{LR} for the associated system family \mathcal{F} is obtained if $n \geq 12$, $n_2 = \lfloor \frac{n+4}{3} \rfloor$ and $n_1 = n_2 + 1$. Besides that, if n is also a multiple of 3, I_{LR} is cubic, exactly $\frac{n^3+9n^2+45n+108}{27}$, that in comparison with the previously suggested greatest upper bound $n + 3(\lfloor n/2 \rfloor)^2$ (see [2]) is considerably larger and it seems to be more much realistic, although almost surely it can be refined on the whole.

The paper has been structured as follows: Section II introduces some notations and basic definitions. In Section III, a new family of positive 2-D systems whose local reachability index largely exceeds the last upper bound given in the literature is provided. Finally, in Section IV, a bound on that local reachability index is studied, which even turn to be cubic under suitable conditions.

2 Preliminaries

For the convenience of the reader, we repeat the relevant material from [2], thus making our exposition self-contained.

We denote by $\lfloor z \rfloor$ the lower integer-part of $z \in \mathbb{R}$ and by $c_j(A)$ the j th column of $A \in \mathbb{R}^{n \times n}$.

Definition 1 (see [27]) *The Hurwitz products* of the $n \times n$ matrices A_1 and A_2 are defined as follows:

- $A_1^i \sqcup^j A_2 = 0$, when either i or j is negative,
- $A_1^i \sqcup^0 A_2 = A_1^i$, if $i \geq 0$, $A_1^0 \sqcup^j A_2 = A_2^j$, if $j \geq 0$,
- $A_1^i \sqcup^j A_2 = A_1(A_1^{i-1} \sqcup^j A_2) + A_2(A_1^i \sqcup^{j-1} A_2)$, if $i, j > 0$.

Observe that $\sum_{i+j=\ell} A_1^i \sqcup^j A_2 = (A_1 + A_2)^\ell$.

Definition 2 (see [29]) A 2-D state-space model (1) is *(positively) locally reachable* if, upon assuming $\chi_0 = 0$, for every state $x^* \in \mathbb{R}_+^n$, there exists $(h, k) \in \mathbb{Z} \times \mathbb{Z}$, $h + k > 0$, and a nonnegative input sequence u_{\cdot} such that $x_{h,k} = x^*$. When so, the state is said to be *(positively) reachable in $h + k$ steps*. The smallest number of steps allowing to reach all nonnegative local states represents *the local reachability index I_{LR}* of such a system.

Characterizations of the local reachability of a positive 2-D system (A_1, A_2, B_1, B_2) can be established in terms of its reachability matrix. The reachability matrix in k -steps is given by

$$\begin{aligned} \mathcal{R}_k &= [B_1 \ B_2 \ A_1 B_1 \ A_1 B_2 + A_2 B_1 \ A_2 B_2 \ A_1^2 B_1 \ \cdots \ A_2^{k-1} B_2] \\ &= [(A_1^{i-1} \sqcup^j A_2) B_1 + (A_1^i \sqcup^{j-1} A_2) B_2]_{i,j \geq 0, 0 < i+j \leq k} \end{aligned}$$

where $k \in \mathbb{N}$. It is known (see [29]) that the local reachability property holds if and only if there are n pairs $(h_i, k_i) \in \mathbb{N} \times \mathbb{N}$, $i = 1, \dots, n$, and n indices $j = j(i) \in \{1, 2, \dots, m\}$ such that $(A_1^{h_i-1} \sqcup^{k_i} A_2) c_j(B_1) + (A_1^{h_i} \sqcup^{k_i-1} A_2) c_j(B_2)$ is a positive i th monomial vector, that is, there exists $k \in \mathbb{N}$ such that \mathcal{R}_k contains an $n \times n$ monomial matrix. If so,

$$\begin{aligned} I_{LR} &= \max_i \min_{h_i, k_i} \{h_i + k_i \mid (A_1^{h_i-1} \sqcup^{k_i} A_2) c_j(B_1) + (A_1^{h_i} \sqcup^{k_i-1} A_2) c_j(B_2) \\ &\quad \text{is an } i\text{-monomial vector for some } j = j(i)\} \end{aligned}$$

We recall that a positive i th monomial vector (or simply i -monomial vector throughout this paper) is a positive multiple of the i th unit vector e_i of \mathbb{R}^n . Similarly, a monomial matrix is a nonsingular matrix having a unique positive entry in each row and column.

From now on, we consider a family of colored digraphs constructed from the matrices of the system (A_1, A_2, B_1, B_2) as follows:

Definition 3 (see [29]) Associated with system (1), a directed digraph called *2-D influence digraph* is defined. It is denoted by $\mathcal{D}^{(2)}(A_1, A_2, B_1, B_2)$ and it is given by $(S, V, \mathcal{A}_1, \mathcal{A}_2, \mathcal{B}_1, \mathcal{B}_2)$, where $S = \{s_1, s_2, \dots, s_m\}$ is the set of *sources*, $V = \{v_1, v_2, \dots, v_n\}$ is the set of *vertices*, \mathcal{A}_1 and \mathcal{A}_2 are subsets of $V \times V$ whose elements are named \mathcal{A}_1 -arcs and \mathcal{A}_2 -arcs (or simply 1-arcs and 2-arcs), respectively, while \mathcal{B}_1 and \mathcal{B}_2 are subsets of $S \times V$ whose elements are tagged \mathcal{B}_1 -arcs and \mathcal{B}_2 -arcs (or simply 1-arcs and 2-arcs), respectively. There is an \mathcal{A}_1 -arc (\mathcal{A}_2 -arc) from v_j to v_i if and only if the (i, j) th entry of A_1 (A_2) is nonzero. There is a \mathcal{B}_1 -arc (\mathcal{B}_2 -arc) from s_ℓ to v_i if and only if the (i, ℓ) th entry of B_1 (B_2) is nonzero.

Definition 4 A *path* in $\mathcal{D}^{(2)}(A_1, A_2, B_1, B_2)$ from v_{i_1} to v_{i_p} is an alternating sequence of vertices and arcs $\{v_{i_1}, (v_{i_1}, v_{i_2}), v_{i_2}, \dots, (v_{i_{p-1}}, v_{i_p}), v_{i_p}\}$ such that $(v_{i_1}, v_{i_2}) \in \mathcal{A}_1 \cup \mathcal{A}_2 \cup \mathcal{B}_1 \cup \mathcal{B}_2$ and $(v_{i_k}, v_{i_{k+1}}) \in \mathcal{A}_1 \cup \mathcal{A}_2$ for all $k = 2, \dots, p-1$. A path is termed *closed* if the initial and final vertices coincide. In accordance with reference [29], an s_ℓ -*path* is a path where $v_{i_1} = s_\ell$. The *path length* is defined to be equal to the number of arcs it contains, that is, $p + q$ being p (q) the number of 1-arcs (2-arcs) occurring in the path \mathcal{P} . Furthermore, the pair

(p, q) is called the *composition* of \mathcal{P} , a *circuit* is a closed path and finally, if each vertex appears exactly once as the first vertex of an arc, then the circuit is said to be a *cycle*.

Remark 1 Given $\mathcal{P} \equiv \{v_{i_1}, (v_{i_1}, v_{i_2}), v_{i_2}, \dots, v_{i_p}\}$ and $\mathcal{Q} \equiv \{v_{j_1}, (v_{j_1}, v_{j_2}), \dots, (v_{j_{q-1}}, v_{j_q}), v_{j_q}\}$ two paths such that $v_{i_p} = v_{j_1}$, we denote the path from v_{i_1} to v_{j_q} obtained by concatenating \mathcal{P} and \mathcal{Q} briefly by $\mathcal{P} \sqcup \mathcal{Q}$. Besides that, if \mathcal{C} is a cycle, from now on, $\eta\mathcal{C}$ stands for the circuit resulting from doing η laps around the cycle, η being a positive integer.

Remark 2 In the sequel, we will write an 1-arc (2-arc) connecting two consecutive vertices v_k and v_{k+1} simply as $k \rightarrow k+1$ ($k \dashrightarrow k+1$) where v_1, \dots, v_n are relabeled as their subscripts.

Definition 5 (see [29]) If there exists an s_ℓ -path in $\mathcal{D}^{(2)}(A_1, A_2, B_1, B_2)$ from the source s_ℓ to the vertex v_i , then v_i is said to be *reachable* from s_ℓ . Besides that, if for any $\ell \in \{1, \dots, m\}$, all s_ℓ -paths of composition (p, q) end in the same vertex $v \in V$, then v is said to be *deterministically reachable* from the source s_ℓ with composition (p, q) .

The shortest length of the s_ℓ -paths deterministically reaching v is called the ℓ -index of v , i.e. $\mathcal{I}_\ell(v) = \min\{p+q \mid (p, q) \text{ is the composition of an } s_\ell\text{-path deterministically reaching } v\}$. Moreover, $I_D(v) = \min\{\mathcal{I}_\ell(v) \mid \ell = 1, \dots, m\}$ is named the *determinant index* of v . Hence, $I_{LR} = \max\{I_D(v) \mid v \in V\}$.

To facilitate the analysis of the local reachability index, a new tool was introduced in [2]. Exactly, from an algebraic point of view, a double-entry table generated just entering at each table entry (i, j) , $i, j \in \mathbb{Z}_+$, the corresponding Hurwitz product $(A_1^{j-1} \sqcup^i A_2) B_1 + (A_1^j \sqcup^{i-1} A_2) B_2$ involved in the reachability matrix in k -steps for a large enough k . This composition table is illustrated in Fig. 1.

Obviously, the aforementioned table can be interpreted from a combinatorial point of view. In fact, for every $\ell \in \{1, \dots, m\}$, the list of vertices obtained by a s_ℓ -path for a composition (i, j) coincide with the subindices corresponding to the nonzero components of the ℓ th column of $(A_1^{i-1} \sqcup^j A_2) B_1 + (A_1^i \sqcup^{j-1} A_2) B_2$, which is placed in the table entry (j, i) . Hence, for each source s_ℓ , the vertices located in cell $(0, 1)$ ($(1, 0)$) are associated with the nonzero components of the corresponding column of the matrix B_1 (B_2). For the remaining table entries, a vertex v can appear in the position (j, i) on the table only if there exists at least either an 1-arc directed toward v from a vertex in cell $(j, i-1)$ or a 2-arc directed toward v from a vertex in position $(j-1, i)$.

Remark 3 Note that a vertex is deterministically reached if and only if it can be located on an table entry without no other vertices.

Applying the theory of either positive 1-D systems or nonnegative matrices, let us deduce the following simple lemmas, which link the analysis of the reachability property of positive 1-D systems to that of positive 2-D systems:

q	p	0	1	2	3	...
0			B_1	$A_1 B_1$	$A_1^2 B_1$...
1	B_2		$A_2 B_1 + A_1 B_2$	$A_2 A_1 B_1$ + $A_1(A_1 B_2 + A_2 B_1)$	$(A_1^2 \sqcup^1 A_2) B_1$ + $(A_1^3 \sqcup^0 A_2) B_2$...
2	$A_2 B_2$		$A_1 A_2 B_2$ + $A_2(A_2 B_1 + A_1 B_2)$	$(A_1^1 \sqcup^2 A_2) B_1$ + $(A_1^2 \sqcup^1 A_2) B_2$	$(A_1^2 \sqcup^3 A_2) B_1$ + $(A_1^3 \sqcup^1 A_2) B_2$...
3	$A_2^2 B_2$		$(A_1^0 \sqcup^3 A_2) B_1$ + $(A_1^1 \sqcup^2 A_2) B_2$	$(A_1^1 \sqcup^3 A_2) B_1$ + $(A_1^2 \sqcup^2 A_2) B_2$	$(A_1^2 \sqcup^3 A_2) B_1$ + $(A_1^3 \sqcup^2 A_2) B_2$...
\vdots	\vdots	\vdots	\vdots	\vdots	\vdots	\ddots

Fig. 1 Composition Table.

Lemma 1 (see Theorem 1 in [21]) *If an ℓ -monomial vector appears in the position $(0, i)$ ($(j, 0)$) on the table where $i > n$ ($j > n$), then such an ℓ -monomial vector must necessarily be found on the preceding positions $(0, \ell)$ ($(\ell, 0)$) for some $\ell \in \{1, \dots, n\}$.*

Lemma 2 (see Lemma 2 in [44]) *If an ℓ -monomial vector appears in the position (j, i) on the table where $j \cdot i \geq 1$, then such an ℓ -monomial vector must be necessarily an ℓ -monomial column of the matrix $[A_1 | A_2]$. Besides that, if an ℓ -monomial vector comes up in the position $(0, i)$ ($(j, 0)$) on the table where $i > 1$ ($j > 1$), then such an ℓ -monomial vector must be necessarily an ℓ -monomial column of the matrix A_1 (A_2).*

Given any positive 2-D system (A_1, A_2, B_1, B_2) , let us define (A_1, A_2, B_1, O) (similarly, (A_1, A_2, O, B_2)) as the 2-D system derived from the initial system maintaining the same state and control matrices except for B_2 (B_1) that is replaced by the zero matrix O of an appropriate size. Clearly, taking into account the definition of the Hurwitz Products, the following elementary lemma can be formulated:

Lemma 3 *The composition table pertaining to the system (A_1, A_2, B_1, B_2) is the overlapping, entry by entry, of the composition tables associated with the systems (A_1, A_2, B_1, O) and (A_1, A_2, O, B_2) .*

In order to get families with a greater local reachability index, let us establish connections between I_{LR} of a system (A_1, A_2, B_1, B_2) and the related indices of the associated systems (A_1, A_2, B_1, O) and (A_1, A_2, O, B_2) .

Lemma 4 *Suppose that (A_1, A_2, B_1, B_2) , (A_1, A_2, B_1, O) and (A_1, A_2, O, B_2) are locally reachable positive 2-D systems then, I_{LR} of (A_1, A_2, B_1, B_2) is greater than or equal to the corresponding indices of both remaining systems.*

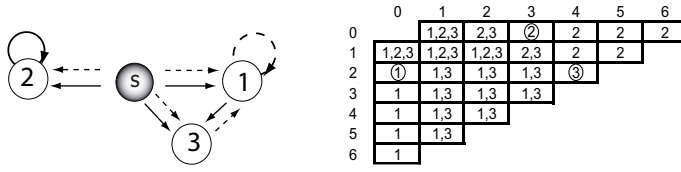


Fig. 2 Digraph and composition table in connection with example 1.

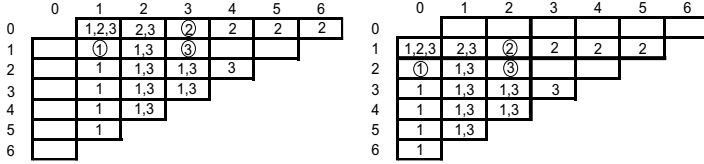


Fig. 3 Composition table as regard to (A_1, A_2, B_1, O) and (A_1, A_2, O, B_2) , respectively.

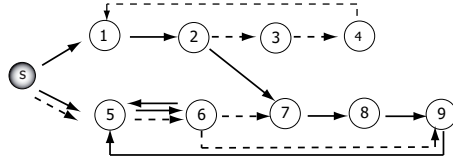


Fig. 4 Digraph as regards to the system examined in example 2.

However, it is worth pointing out an instance where strict inequality holds.

Example 1 Let us take the matrices $A_1 = [e_3 \mid e_2 \mid 0] \in \mathbb{R}_+^{3 \times 3}$, $A_2 = [e_1 \mid 0 \mid e_1] \in \mathbb{R}_+^{3 \times 3}$ and $B_1 = B_2 = [e_1 + e_2 + e_3] \in \mathbb{R}_+^{3 \times 1}$ which define a system (1) whose 2-D influence digraph and composition table are represented in Fig. 2.

Now, we construct the composition tables of (A_1, A_2, B_1, O) and (A_1, A_2, O, B_2) from the initial one, which are given in Fig. 3. We remark that both systems are locally reachable and their associated local reachability indices are equal to 4 while the original system is also locally reachable but $I_{LR} = 6$, which is strictly greater than the previous ones.

In order to illustrate the way of analyzing the local reachability property for positive 2-D systems through their composition table, let us present the following example.

Example 2 The positive 2-D system (A_1, A_2, B_1, B_2) of order $n = 9$ described by the quadruple

$$([e_2 \mid e_7 \mid 0 \mid 0 \mid e_6 \mid e_5 \mid e_8 \mid e_9 \mid e_5], [0 \mid e_3 \mid e_4 \mid e_1 \mid e_6 \mid e_7 + e_9 \mid 0 \mid 0 \mid 0], [e_1 + e_5], [e_5])$$

has a 2-D influence digraph as given in Fig. 4 as well as a composition table as partially displayed in Fig. 5.

	0	1	2	3	4	5	6	7
0		1,5	2,6	5,7	6,8	5,9	5,6	5,6
1	5	6	3,5,7 9	5,6,8	5,6,7 9	5,6,8	5,6,7 9	5,6,7 8,9
2	6	5,7 9	4,5,6 8	5,6,7 9	5,6,7 8,9	5,6,7 8,9	5,6,7 8,9	5,6,7 8,9
3	7,9	5,6 8	1,5,6 7,9	2,5,6 7,8,9	5,6,7 8,9	5,6,7 8,9	5,6,7 8,9	5,6,7 8,9
4		6,7 9	5,6,7 8,9	3,5,6 7,8,9	5,6,7 8,9	5,6,7 8,9	5,6,7 8,9	5,6,7 8,9
5		7,9	5,6,7 8,9	4,5,6 7,8,9	5,6,7 8,9	5,6,7 8,9	5,6,7 8,9	5,6,7 8,9
6			6,7,9	1,5,6 7,8,9	2,5,6 7,8,9	5,6,7 8,9	5,6,7 8,9	5,6,7 8,9
7			7,9	5,6,7 8,9	3,5,6 7,8,9	5,6,7 8,9	5,6,7 8,9	5,6,7 8,9

	13	14	15	16	17	18	19	20
36	1	2	7	8	6,7,9	5,6,7 8,9	5,6,7 8,9	5,6,7 8,9
37		3				5,6,7 8,9	5,6,7 8,9	5,6,7 8,9
38		4				6,7,9	5,6,7 8,9	5,6,7 8,9
39		1	2	7	8	7,9	5,6,7 8,9	5,6,7 8,9
40			3				6,7,9	5,6,7 8,9
41			4				7,9	5,6,7 8,9
42			1	2	7	8	9	5,6,7 8,9

Fig. 5 Composition table associated with example 2.

In short, let us represent the cycles $\mathcal{C}_1 \equiv \{1 \rightarrow 2 \rightarrow 3 \rightarrow 4 \rightarrow 1\}$, $\mathcal{C}_2 \equiv \{5 \rightarrow 6 \rightarrow 9 \rightarrow 5\}$, $\mathcal{C}_3 \equiv \{5 \rightarrow 6 \rightarrow 5\}$ and the path $\mathcal{P}_1 \equiv \{7 \rightarrow 8 \rightarrow 9\}$.

A quick glance at Fig. 5 reveals the determinant index for each one of the vertices along with the composition for which the corresponding s -path deterministically reaches it, that is,

$$\begin{aligned}
 I_D(v_5) &= 1, & I_D(v_6) &= 2, & I_D(v_1) &= 25 \\
 I_D(v_4) &= 28, & I_D(v_3) &= 31, & I_D(v_2) &= 34 \\
 I_D(v_7) &= 43, & I_D(v_8) &= 52, & I_D(v_9) &= 61.
 \end{aligned}$$

Besides that, the system (A_1, A_2, B_1, B_2) is locally reachable and $I_{LR} = 61$.

However, to entirely construct the composition table is not useful from a computational point of view. Thus, let us significantly reduce the number of vertices appearing in the entries on the table. Focusing on the structure of the digraph given in Fig. 4, we emphasize that if there is some table position (q, p) involving at least one vertex in \mathcal{C}_3 then all cells (q, p_2) with $p_2 \geq p$ are occupied by at least vertex 5 or 6. Hence, we can assure that if there is some position on the composition table involving at least one vertex in \mathcal{C}_3 , all entries to its right-hand side in that same row also contains at least vertex 5 or vertex 6. In addition, no new vertices can be deterministically reached in all these entries. Thus, let us omit vertices 5 and 6 in the corresponding positions on the table and let us blue paint such entries to mark this restricted zone associated with vertices in \mathcal{C}_3 . Therefore, clearly, no vertices forming the cycle \mathcal{C}_1 can be deterministically reached while appear in entries inside the blue zone. As a consequence, let us use a schematic representation of the composition table (see Fig. 6) where only some vertices belonging to \mathcal{C}_1 , \mathcal{C}_2 and \mathcal{P}_1 are indicated. Obviously, this new visual model is simpler than the previous one.

Furthermore, this new approach allows us to limit the set of entries on the table where a vertex can be deterministically reached or alternatively, to

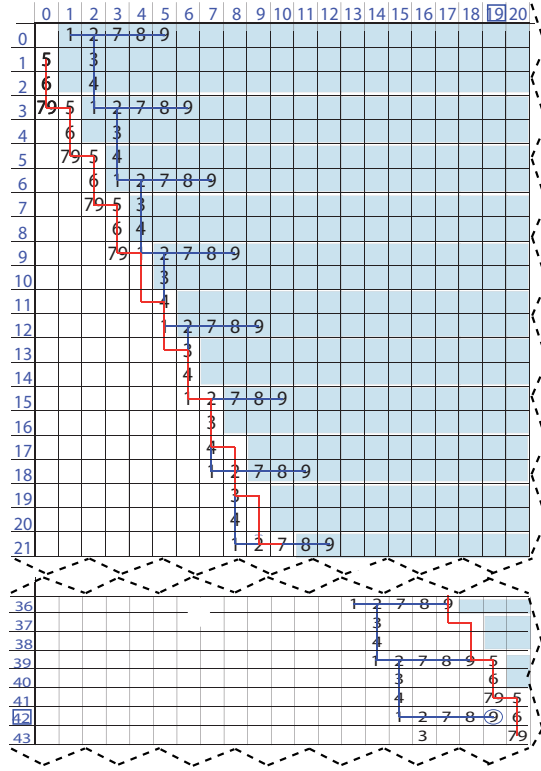


Fig. 6 A sketch for the composition table of example 2.

define broad regions with all their cells completely filled with vertices and in this way, to study how far, as a maximum, we have to go to deduce I_{LR} .

3 Local reachability index for a special class of systems

From the sketch given in example 2, let us construct a new family of positive 2-D systems whose local reachability index largely exceeds the last upper bound given in the literature (see [2]), that is, $n + 3(\lfloor n/2 \rfloor)^2$ for some odd natural number $n \geq 5$. Namely, we consider a family \mathcal{F} of n th-order systems with $n \geq 6$ and whose influence digraph associated is depicted in Fig. 7, being the natural numbers n_1 and n_2 such that $n_1 > n_2 \geq 2$ and $n - n_1 - n_2 \geq 1$.

Theorem 1 *Every n th-order system of family \mathcal{F} with $n \geq 6$, the natural numbers n_1 and n_2 such that $n_1 > n_2 \geq 2$ and $n - n_1 - n_2 \geq 1$ and whose influence digraph associated is depicted in Fig. 7 is (positively) locally reachable, and furthermore,*

$$I_{LR} \leq \frac{(3+k)n_2(n_1-1) + n_1^2}{n_1 - n_2}, \text{ with } k = n - n_1 - n_2. \quad (2)$$

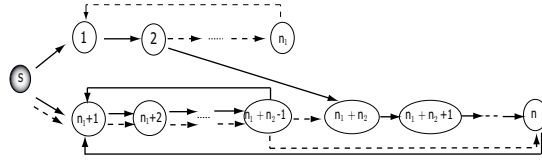


Fig. 7 Digraph for family \mathcal{F} .

Proof To reduce notation, we denote the path $\{n_1 + n_2 \rightarrow n_1 + n_2 + 1 \rightarrow \dots \rightarrow n\}$ of composition $(k, 0)$ (see Fig. 7) by \mathcal{P}_1 and also, we define the cycles $\mathcal{C}_1 \equiv \{1 \rightarrow 2 \dashrightarrow \dots \dashrightarrow n_1 \dashrightarrow 1\}$, $\mathcal{C}_2 \equiv \{n_1 + 1 \dashrightarrow \dots \dashrightarrow n_1 + n_2 - 1 \dashrightarrow n \rightarrow n_1 + 1\}$ and $\mathcal{C}_3 \equiv \{n_1 + 1 \rightarrow \dots \rightarrow n_1 + n_2 - 1 \rightarrow n_1 + 1\}$ whose compositions are $(1, n_1 - 1)$, $(1, n_2 - 1)$, $(n_2 - 1, 0)$, respectively.

By its composition table (see Fig. 8), we can notice the following facts:

- All the possible s -paths of composition $(0, j)$, with $1 \leq j \leq n_2 - 1$, terminate at vertex $n_1 + j$, and therefore, we can affirm that $n_1 + j$ is deterministically reachable with composition $(0, j)$. Thus, the vertices $n_1 + 1, n_1 + 2, \dots, n_1 + n_2 - 1$ are deterministically reachable and their determinant index is smaller than or equal to $n_2 - 1$. Note that \mathcal{C}_3 is made up of those vertices, which have been represented as a white ellipse inside a shady rectangle on the composition table (see Fig. 8).
- Taking into account that \mathcal{C}_3 consist only of 1-arcs, we can assure that if there is some position on the composition table involving at least one vertex in \mathcal{C}_3 then, the remaining cells to its right-hand side in that same row are also occupied by vertices in \mathcal{C}_3 (although omitted on the table, see step 2, Fig. 8). Moreover, as \mathcal{C}_3 is accessible from the source s by using an 1-arc, it is clear that, without utilizing 2-arcs, there are no deterministically reachable vertices out of \mathcal{C}_3 .
- At first, the vertices in \mathcal{C}_1 (illustrated in Fig. 8 by white stars except for vertex 2, which is black, inside a lined rectangle) are reachable by s -paths needing more 1-arcs than those in cycle \mathcal{C}_2 , that is, they are placed on the composition table further to the right than those in \mathcal{C}_2 . However, they are not deterministically reached since there are more vertices in the cells containing such vertices. Observe that if a vertex in \mathcal{C}_1 is placed on positions (j, i) then it appears again in $(j + n_1 - 1, i + 1)$, in $(j + 2(n_1 - 1), i + 2)$, and so on (depending on the number of laps done around the cycle \mathcal{C}_1). Moreover, all these positions on the table can be connected through a straight line (for instance, see Fig. 8, line r_3 associated with vertex 2). Similar reasonings can be applied to derive straight lines for vertices in \mathcal{C}_2 (see Fig. 8, line r_2 corresponding to vertex $n_1 + n_2 - 1$), and for those in \mathcal{P}_1 (combining this path with the cycle \mathcal{C}_1 , (see Fig. 8, line r_1 corresponding to vertex n)). Obviously (see step 3, Fig. 8), taking into account that the number of 2-arcs involved to cover the laps done around \mathcal{C}_2 ($n_1 > n_2$) is greater than around \mathcal{C}_1 , the lines r_2 and r_3 intersect, then, for a large enough number of laps, the vertices in \mathcal{C}_1 go out of the region of entries cover by vertices

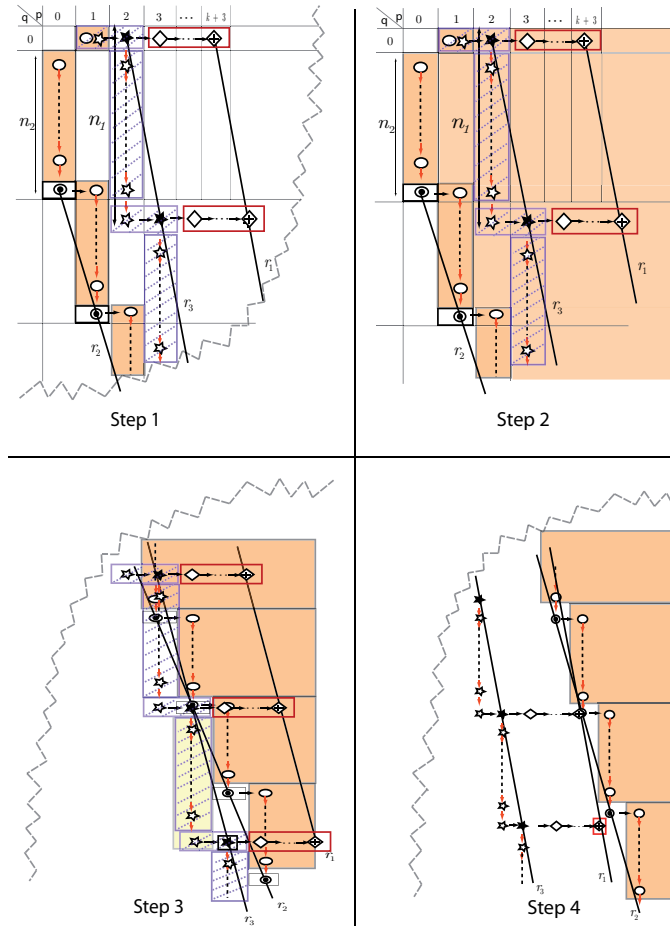


Fig. 8 Step 1: A sketch for the composition table of any system belonging to \mathcal{F} . Step 2: \mathcal{C}_3 fills the cell rows with vertices in \mathcal{C}_3 . Step 3: Precise moment in which the last vertex in \mathcal{C}_1 is deterministically reached. Step 4: Instant in which the last vertex in \mathcal{P}_1 is deterministically reached.

in \mathcal{C}_3 . Thus, we can deterministically reach all vertices in \mathcal{C}_1 . Furthermore, clearly, the last vertex deterministically reached in \mathcal{C}_1 is 2.

- Clearly, using line r_1 instead of r_3 and reasoning as before, the vertices in \mathcal{P}_1 (shown by white diamonds) can be deterministically reached (in fact, after doing it the vertices in \mathcal{C}_1).
- Finally, analyzing the slope of each lines for vertices in \mathcal{C}_1 and \mathcal{P}_1 , the last vertex deterministically reached is n (see step 4, Fig. 8) and this event occurs after doing one more lap around cycle \mathcal{C}_1 subsequently to the intersection of lines r_1 and r_2 .

Therefore, to determine the local reachability index for any system of this family, we can analyze the determinant index of vertex n . Namely, by seeing

how the cycles \mathcal{C}_1 and \mathcal{C}_2 appear on the composition table, we have to reckon up the intersection point of the line r_1 that has slope $(n_1 - 1)$ and passes through the point $(3 + k, 0)$ and the line r_2 that has slope $(n_2 - 1)$ and passes through the point $(0, n_2)$. Such a intersection point (x, y) is the solution of the system

$$\begin{aligned} y &= (n_1 - 1)(x - (3 + k)) , \\ y &= n_2 + (n_2 - 1)x , \end{aligned}$$

that is,

$$\begin{aligned} x &= \frac{(3 + k)(n_1 - 1) + n_2}{n_1 - n_2} , \\ y &= n_2 + (n_2 - 1) \frac{(3 + k)(n_1 - 1) + n_2}{n_1 - n_2} . \end{aligned}$$

Since the only valid solutions are those that provide a composition, we must impose that $x, y \in \mathbb{N}_0$. Thus, doing one more lap around the cycle \mathcal{C}_1 , we choose

$$\begin{aligned} x_0 &= \left\lfloor \frac{(3 + k)(n_1 - 1) + n_1}{n_1 - n_2} \right\rfloor , \\ y_0 &= (n_1 - 1)(x_0 - (k + 3)) , \end{aligned}$$

and we can write $I_D(n) = x_0 + y_0$, that is,

$$I_D(n) = \left\lfloor \frac{(3 + k)(n_1 - 1) + n_1}{n_1 - n_2} \right\rfloor + (n_1 - 1) \left\lfloor \frac{(3 + k)(n_2 - 1) + n_1}{n_1 - n_2} \right\rfloor . \quad (3)$$

If λ_1 and λ_2 stand for the lower integer-parts appearing in equation (3) then

$$\begin{aligned} (3 + k)(n_1 - 1) + n_1 &= \lambda_1(n_1 - n_2) + t_1 ; \\ (3 + k)(n_2 - 1) + n_1 &= \lambda_2(n_1 - n_2) + t_2 \end{aligned}$$

with t_1 and $t_2 \in [0, n_1 - n_2) \cap \mathbb{Z}_+$.

Subtracting these two equations, $(3 + k)(n_1 - n_2) = (\lambda_1 - \lambda_2)(n_1 - n_2) + (t_1 - t_2)$. Hence, $t_1 = t_2$ and $(3 + k) = (\lambda_1 - \lambda_2)$. Plugging these equalities into (3), $I_D(n) = \lambda_1 + (n_1 - 1)\lambda_2$, then

$$I_D(n) = (3 + k) + n_1 \left\lfloor \frac{(3 + k)(n_2 - 1) + n_1}{n_1 - n_2} \right\rfloor .$$

Consequently, using that $\lfloor x \rfloor \leq x$ and simplifying, we deduce the desired formula

$$I_D(n) \leq \frac{(3 + k)n_2(n_1 - 1) + n_1^2}{n_1 - n_2} .$$

Alternatively, for $n = n_1 + n_2 + k$, (2) is rewritten as

$$I_{LR} \leq \frac{(3 + n - n_1 - n_2)n_2(n_1 - 1) + n_1^2}{n_1 - n_2} . \quad (4)$$

4 Maximum value of I_{LR} for \mathcal{F}

The bound given in (4) depends on n_1 and n_2 with the aforementioned restrictions. Now, for every $n \geq 6$ let us find the values of these variables that maximize such a index. With this aim, we define the following function

$$f(n_1, n_2) := \frac{(3+n-n_1-n_2)n_2(n_1-1)+n_1^2}{n_1-n_2}. \quad (5)$$

To analyze its behaviour, we make a change of variables $u = n_1 + n_2$, $v = n_1 - n_2$. Let us denote $g(u, v) := f\left(\frac{u+v}{2}, \frac{u-v}{2}\right)$ and from (5), it follows that

$$g(u, v) = \frac{1}{4v} [(3+n-u)(u-v)(u+v-2) + (u+v)^2].$$

Thus, the partial derivative of $g(u, v)$ with respect to u is

$$\frac{\partial g(u, v)}{\partial u} = \frac{-1}{4v} [3u^2 - 2(6+n)u + 2(3+n) - v^2].$$

Then, we can state that

$$\frac{\partial g(u, v)}{\partial u} = 0 \Leftrightarrow u = \frac{(6+n) \pm \sqrt{18+6n+n^2+3v^2}}{3}.$$

As $u = \frac{(6+n) - \sqrt{18+6n+n^2+3v^2}}{3}$ does not satisfy that $u = n_1 + n_2 \geq 5$ for any suitable number n (under the constraints), the value desired is $u_0(v) = \frac{(6+n) + \sqrt{18+6n+n^2+3v^2}}{3}$.

Let us define $G(v) := g(u_0(v), v) = \frac{54+27n+9n^2+n^3+81v+27nv-9nv^2+(n^2+6n+18+3v^2)^{\frac{3}{2}}}{54v}$, then the derivative of G is,

$$G'(v) = -\frac{n^3+9n^2+27n+9nv^2+54+(n^2+6n+18-6v^2)\sqrt{n^2+6n+18+3v^2}}{54v^2}.$$

Taking $Z(v)$ the numerator of $G'(v)$ with changed sign, let us check that $Z(v) > 0$ for every $v \in [0, n]$, equivalently, $G(v)$ is decreasing at v if $v \in (0, n)$.

Initially, we calculate $Z'(v) = -\frac{9v[6(3+v^2)+n(6+n-2\sqrt{n^2+6n+18+3v^2})]}{\sqrt{n^2+6n+18+3v^2}}$. Notice that $Z'(v) = 0$ has as real solutions, $v = \pm\sqrt{-3-n+\frac{n\sqrt{12+4n+n^2}}{2\sqrt{3}}}$ and $v = 0$, and also $Z''(0) = 9(2n - \sqrt{n^2+6n+18}) > 0$, $\forall n \geq 4$, then, $Z(v)$ has a local minimum point at $v = 0$.

On the one hand $Z(0) = 54 + 27n + 9n^2 + n^3 + (18 + 6n + n^2)^{(3/2)} > 0$, on the other hand

$$Z(n) = 10n^3 + 9n^2 + 27n + 54 + (6n + 18 - 5n^2)\sqrt{6n + 18 + 4n^2}$$

and for every $n \geq 3$, $(6n + 18 - 5n^2) < 0$, thus, we can affirm that $(6n + 18 - 5n^2)\sqrt{6n + 18 + 4n^2}$ is greater than $(6n + 18 - 5n^2)(2n + 4)$. Hence, $Z(n)$ is

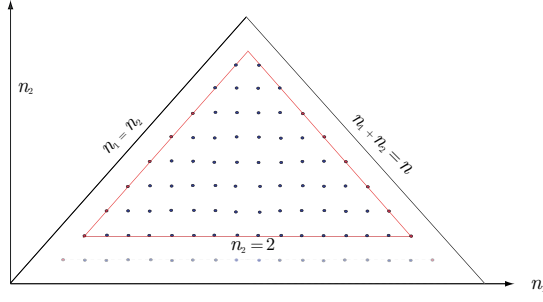


Fig. 9 Feasible region.

bounded from below by $n^2 + 87n + 126 > 0$ since $Z(n) > 10n^3 + 9n^2 + 27n + 54 + (6n + 18 - 5n^2)(2n + 4) = n^2 + 87n + 126 > 0$.

In short, $Z(v) > 0$ for every $n \geq 4$ and $v \in [0, n]$, so we deduce that $G'(v) < 0$ and $G(v)$ is decreasing at $(0, n)$. Consequently, the maximum value of $G(v)$ is obtained for the minimum possible value of v , i.e., $v = 1$. Thus, $n_1 - n_2 = 1$, $n_1 = n_2 + 1$, $k = n - 1 - 2n_2$ and plugging this equalities into (5), $f(n_2 + 1, n_2) = (3 + n - 2n_2)n_2^2 + 2n_2 + 1$.

Now, its derivative with respect to n_2 is $\frac{\partial f(n_2+1, n_2)}{\partial n_2} = 2 + 6n_2 + 2nn_2 - 6n_2^2$.

As a consequence, $\frac{\partial f(n_2+1, n_2)}{\partial n_2} = 0$ iff $n_2 = \frac{3 + n \pm \sqrt{n^2 + 6n + 21}}{6}$.

By the evaluation of the second derivate, $f(n_2 + 1, n_2)$ has a relative maximum point at $n_2' = \frac{1}{6} \left[3 + n + \sqrt{n^2 + 6n + 21} \right]$ and a local minimum point ¹ at $n_2'' = \frac{1}{6} \left[3 + n - \sqrt{n^2 + 6n + 21} \right]$. In search of absolute maximum points, we must know when the local maximum point is a feasible solution since our solutions must belong to the region $\mathcal{D} = \{(n_1, n_2) \in \mathbb{N}^2 \mid n_1 + n_2 < n, n_1 > n_2 \geq 2\}$ whose illustration is given in Fig. 9.

To determine whether the relative maximum point is in the aforementioned region, we bound from below and from above n_2' , if possible, by using values in \mathcal{D} . Observe that $n^2 + 6n + 21$ can be expressed either as $(n + 3)^2 + 12$ or as $(n + 4)^2 - 2n + 5$ then,

$$\frac{n}{3} + 1 < n_2' = \frac{3 + n + \sqrt{n^2 + 6n + 21}}{6} < \frac{n}{3} + \frac{7}{6}. \quad (6)$$

Let us analyze this inequality depending on the possible values of n . Namely, for the sake of brevity, we study only if $n = 3p - 1$ with $p \in \mathbb{N}$ since similar reasoning as in this case can be applied to the cases $n = 3p$ and $n = 3p + 1$.

If $n = 3p - 1$, the inequalities given in (6) are reduced to $p + \frac{2}{3} < n_2' < p + \frac{5}{6}$. Hence, either $n_2 = p$ or $n_2 = p + 1$ provides the maximum point. Thus, it is

¹ Note that $n_2'' < 1$ for every n and so, it would always be out of \mathcal{D} .

sufficient to evaluate f for such values,

$$\begin{aligned} f(p+1, p) &= (p+2)p^2 + 2p + 1, \\ f(p+2, p+1) &= p(p+1)^2 + 2(p+1) + 1. \end{aligned}$$

As $f(p+2, p+1) - f(p+1, p) = p+2 > 0$, we choose $n_2 = p+1$ (in the remaining cases too).

Summarising, for every $n \in [3p-1, 3p+1]$ the natural number leading to the maximum value of $f(n_2+1, n_2)$ is $n_2 = p+1$ and it can be written as $n_2 = \lfloor \frac{n+1}{3} \rfloor + 1 = \lfloor \frac{n+4}{3} \rfloor$.

Clearly, this number n_2 (f takes its maximum value only if $n_1 = n_2 + 1$) must meet the condition $(n_2+1, n_2) \in \mathcal{D}$. Hence, we must impose that $2n_2+1 \leq n-1$ and therefore,

$$2 \left\lfloor \frac{n+4}{3} \right\rfloor \leq n-2 \Leftrightarrow \left\lfloor \frac{n+4}{3} \right\rfloor \leq \frac{n}{2} - 1,$$

which holds for every $n \geq 12$. Besides that if $6 \leq n \leq 11$, the maximum values of $f(n_1, n_2)$ for $n_1 = n_2 + 1$ are attained at the boundary of \mathcal{D} and so, $n_2 = \lfloor \frac{n}{2} \rfloor - 1$.

As a result, the bound obtained for the local reachability index of systems in \mathcal{F} is given by

$$I_{LR} \leq \begin{cases} f(\lfloor \frac{n}{2} \rfloor, \lfloor \frac{n}{2} \rfloor - 1) & \text{if } 6 \leq n \leq 11; \\ f(\lfloor \frac{n+7}{3} \rfloor, \lfloor \frac{n+4}{3} \rfloor) & \text{if } n \geq 12, \end{cases}$$

that is,

$$I_{LR} \leq \begin{cases} (4+n-2\lfloor \frac{n}{2} \rfloor)(\lfloor \frac{n}{2} \rfloor - 1)^2 + \lfloor \frac{n}{2} \rfloor^2 & \text{if } 6 \leq n \leq 11; \\ (n+3)\lfloor \frac{n+4}{3} \rfloor^2 - 2\lfloor \frac{n+4}{3} \rfloor^3 + 2\lfloor \frac{n+4}{3} \rfloor + 1 & \text{if } n \geq 12. \end{cases}$$

Proposition 1 *For every system of \mathcal{F} with $n \geq 12$, its local reachability index is bounded by*

$$I_{LR} \leq \frac{1}{27}(n^3 + 9n^2 + 45n + 108). \quad (7)$$

Furthermore, the equality is achieved for those systems satisfying that n is a multiple of 3, $n_1 = \lfloor \frac{n+7}{3} \rfloor$ and $n_2 = \lfloor \frac{n+4}{3} \rfloor$.

Proof Let us study the expression

$$(n+3) \left\lfloor \frac{n+4}{3} \right\rfloor^2 - 2 \left\lfloor \frac{n+4}{3} \right\rfloor^3 + 2 \left\lfloor \frac{n+4}{3} \right\rfloor + 1 \quad (8)$$

depending on the values of n . Thus,

- If $n+4 = 3p$, (8) is transformed into $(3p-1)p^2 - 2p^3 + 2p + 1 = p^3 - p^2 + 2p + 1$.
- If $n+4 = 3p-1$, (8) is $(3p-2)(p-1)^2 - 2(p-1)^3 + 2(p-1) + 1 = p^3 - 2p^2 + 3p - 1$.
- If $n+4 = 3p+1$, (8) is equal to $(3p)p^2 - 2p^3 + 2p + 1 = p^3 + 2p + 1$.

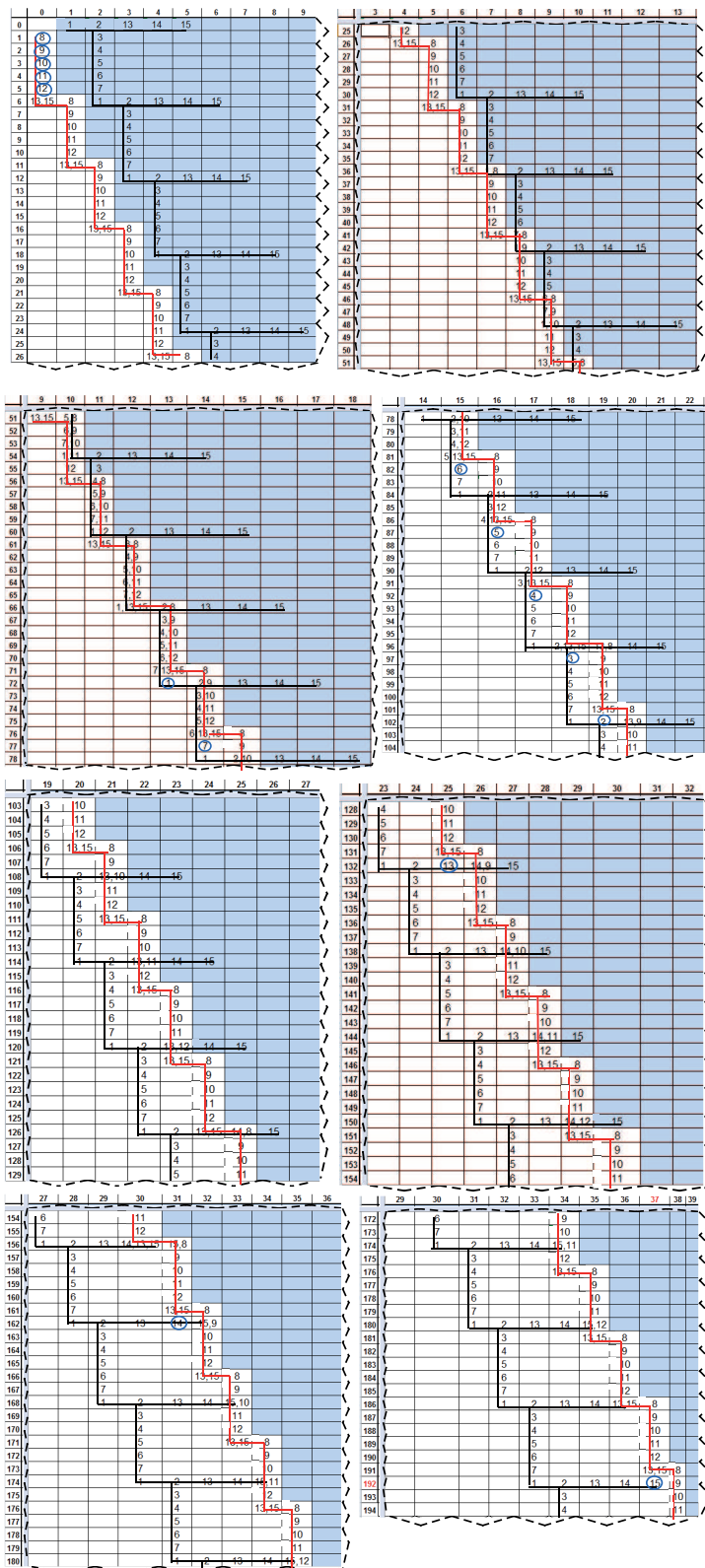


Fig. 11 Composition table associated with example 3.

Acknowledgements We are gratefully thankful to the reviewers for their valuable remarks. This work has been partially supported by the European Union [FEDER funds] and Ministerio de Ciencia e Innovación through Grants MTM-2013-43678-P and DPI2016-78831-C2-1-R.

References

1. E. Bailo, J. Gelonch and S. Romero-Vivo. An Upper Bound on the Reachability Index for a special class of Positive 2-D Systems. *Electronic Journal of Linear Algebra*, 18:1–12, 2009.
2. E. Bailo, J. Gelonch and S. Romero-Vivo. Advances on the reachability index of positive 2-D systems. *IEEE Transactions on Automatic Control*, 59(8): 2248–2251, 2014.
3. Z. Bartosiewicz. Reachability and observability graphs for linear positive systems on time scales. In: IFAC Proceedings Volumes, 47(3), 3803-3808 (2014).
4. L. Benvenuti, A. De Santis and L. Farina (Eds.) Positive Systems: Theory and Applications. In: Lecture Notes in Control and Information Sciences, 294, Springer, Berlin, 2003.
5. L. Benvenuti. On the reachable set for third-order linear discrete-time systems with positive control. *System and Control Letters*, 60(9):690–698, 2011.
6. L. Benvenuti. On the reachable set for third-order linear discrete-time systems with positive control: The case of complex eigenvalues. *System and Control Letters*, 60(9):1000–1008, 2011.
7. A. Benzaouia, A. Hmamed and F. Tadeo. Two-dimensional systems: From introduction to state of the art. In Studies in systems, decision and control (Vol. 28). Switzerland: Springer International Publishing. doi: 10.1007/978-3-319-20116-0, 2016.
8. R. Bru and S. Romero-Vivo (Eds.) Positive Systems: Theory and Applications. In: Lecture Notes in Control and Information Sciences, 389, Springer, Berlin, 2009.
9. R. Bru and E. Bailo and J. Gelonch and S. Romero. On the Reachability Index of Positive 2-D Systems. *IEEE Trans. Circuits Syst. II: Express Briefs*, 53(10):997–1001, 2006.
10. R. Bru, C. Coll, S. Romero and E. Sánchez. Reachability Indices of Positive Linear Systems. *Electronic Journal of Linear Algebra*, 11:88–102, 2004.
11. R. Bru, S. Romero-Vivó and E. Sánchez. Reachability indices of periodic positive systems via positive shift-similarity. *Linear Algebra and its Applications*, 429:1288–1301, 2008.
12. R. Bru, L. Cacceta and V. G. Rumchev. Monomial Subdigraphs of Reachable and Controllable positive discrete-time Systems. *Int. J. Appl. Math. Comput. Sci.*, 15(1):159–166, 2005.
13. R. Bru and S. Romero and E. Sánchez. Canonical forms of reachability and controllability of positive discrete-time control systems. *Linear Algebra and its Applications*, 310:49–71, 2000.
14. F. Cacace, L. Farina, R. Setola and A. Germani (Eds.). Positive Systems: Theory and Applications. In: Lecture Notes in Control and Information Sciences, 471, Springer International Publishing, Berlin, 2017.
15. B. Cantó, C. Coll and E. Sánchez. On stability and reachability of perturbed positive systems. *Advances in Difference Equations*, 2014(1): 296, 2014. <https://doi.org/10.1186/1687-1847-2014-296>
16. C. Coll, M. Fullana and E. Sánchez. Reachability and observability indices of a discrete-time periodic descriptor system. *Applied Mathematics and Computation*, 153:485–496, 2004.
17. C. Commault. A simple graph theoretic characterization of reachability for positive linear systems. *Systems and Control Letters*, 52(3-4):275–282, 2004.
18. C. Commault. On the reachability in any fixed time for positive continuous-time linear systems. *Systems and Control Letters*, 56 (4): 272 – 276, 2007.
19. C. Commault and N. Marchand (Eds.) Positive Systems: Theory and Applications. In: Lecture Notes in Control and Information Sciences, 341, Springer, Berlin, 2006.
20. P. G. Coxson and H. Shapiro. Positive reachability and controllability of positive systems. *Linear Algebra and its Applications*, 94:35–53, 1987.

21. P. G. Coxson and L. C. Larson and H. Schneider. Monomial patterns in the sequence $A^k b$. *Linear Algebra and its Applications*, 94:89–101, 1987.
22. M. De la Sen. On the reachability and controllability of positive linear time-invariant dynamic systems with internal and external incommensurate point delays. *The Rocky Mountain Journal of Mathematics*, 40(1):177–207, 2010.
23. M. P. Fanti, B. Maione, and B. Turchiano. Controllability of linear single-input positive discrete time systems. *International Journal of Control*, 50:2523–2542, 1989.
24. M. P. Fanti, B. Maione, and B. Turchiano. Controllability of multi-input positive discrete time systems. *International Journal of Control*, 51:1295–1308, 1990.
25. L. Farina and S. Rinaldi *Positive Linear Systems: Theory and Applications*. Pure and Applied Mathematics, Wiley-Interscience, New York, 2000.
26. E. Fornasini and G. Marchesini. State-Space realization of two-dimensional filters. *IEEE Transactions on Automatic Control*, AC-21(4):484–491, 1976.
27. E. Fornasini and G. Marchesini. Doubly indexed dynamical systems. *Math. Sys. Theory*, 12:59–72, 1978.
28. E. Fornasini and M. E. Valcher. *On the positive reachability of 2D positive systems*. In: L. Farina L. Benvenuti, A. De Santis, editor, *Positive Systems*, pages 297–304. Lecture Notes in Control and Information Sciences, 2003.
29. E. Fornasini and M. E. Valcher. Controllability and Reachability of 2-D Positive Systems: A Graph Theoretic Approach. *IEEE Trans. Circuits Syst. I: Regular Papers*, 52(3):576–585, 2005.
30. K. Hrynów and K. A. Markowski. Experimental evaluation of upper bounds of reachability index for set of solutions of 2-D positive system. 17th International Carpathian Control Conference (ICCC), Tatranska Lomnica, pp. 248–252, 2016, doi: 10.1109/CarpathianCC.2016.7501103
31. T. Kaczorek. Reachability and controllability of 2D positive linear systems with state feedback. *Control and Cybernetics*, 29(1):141–151, 2000.
32. T. Kaczorek. *Positive 1D and 2D Systems*. Springer, London, United Kingdom, 2002.
33. T. Kaczorek. Reachability and minimum energy control of positive 2D systems with delays. *Control and Cybernetics*, 34(2):411–423, 2005.
34. T. Kaczorek. New reachability and observability tests for positive linear discrete-time systems. *Bull. Polish Acad. Sci., Tech. Sci.*, 55(1):19–21, 2007.
35. T. Kaczorek. Reachability of linear hybrid systems described by the general model. *Journal Archives of Control Sciences*, 20(2): 199–207, 2010.
36. T. Kaczorek and K. Borawski. Existence of reachable pairs (A, B) of discrete-time linear systems. In: *Proceedings of 21st International Conference on Methods and Models in Automation and Robotics (MMAR)*, IEEE, 702–707, 2016. DOI: 10.1109/MMAR.2016.7575222
37. S. P. Kostova. A PLDS Model of Pollution in Connected Water Reservoirs. In: Benvenuti L., De Santis A., Farina L. (eds) *Positive Systems*. Lecture Notes in Control and Information Science, vol 294, 257–263, Springer, Berlin, Heidelberg, 2003.
38. W. Marszalek. Two-dimensional state space discrete models for hyperbolic partial differential equations *Appl. Math. Model.*, 8(1):11–14, 1984.
39. K. A. Markowski, Determination reachability index space of positive two-dimensional linear system using digraph-based theory 19th International Conference on System Theory, Control and Computing (ICSTCC), Cheile Gradistei, DOI: 10.1109/ICSTCC.2015.7321348, 533–538, 2015. doi: 10.1109/ICSTCC.2015.7321348
40. L. Moysis and V. Mishra. Existence of Reachable and Observable Triples of Linear Discrete-Time Descriptor Systems. *Circuits, Systems, and Signal Processing*, 1-13, 2018. <https://doi.org/10.1007/s00034-018-0922-5>
41. R. Pereira, P. Rocha and R. Simões. Characterizations of global reachability of 2D structured systems. *Multidimensional Systems and Signal Processing*, DOI: 10.1007/s11045-011-0154-3, 1–14, 2011
42. V. G. Rumchev and D. J. G. James. Reachability and controllability of time-variant discrete-time positive linear systems, *Control and Cybernetics*, 33 (1):87–93, 2004.
43. V. Rumchev and S. Chotijah. The Minimum Energy Problem for Positive Discrete-Time Linear Systems with Fixed Final State. In R. Bru, S. Romero-Vivo (Eds.), *Positive Systems*. Lecture Notes in Control and Information Sciences, 389:141–149, 2009.

-
44. M.E. Valcher. Controllability and reachability criteria for discrete time positive systems. *International Journal of Control*, 65(3):511–536, 1996.
 45. M.E. Valcher. Reachability Properties of Continuous-Time Positive Systems. *IEEE Transactions on Automatic Control*, 54 (7):1586–1590, 2009.
 46. M.E. Valcher. Reachability Analysis for Different Classes of Positive Systems. In: R. Bru, S. Romero-Vivo (Eds.), *Positive Systems. Lecture Notes in Control and Information Sciences*, 389:29–41, 2009.