

MADERO PARA LA VILLA DE PEDRALVA

PROYECTO A 1:200

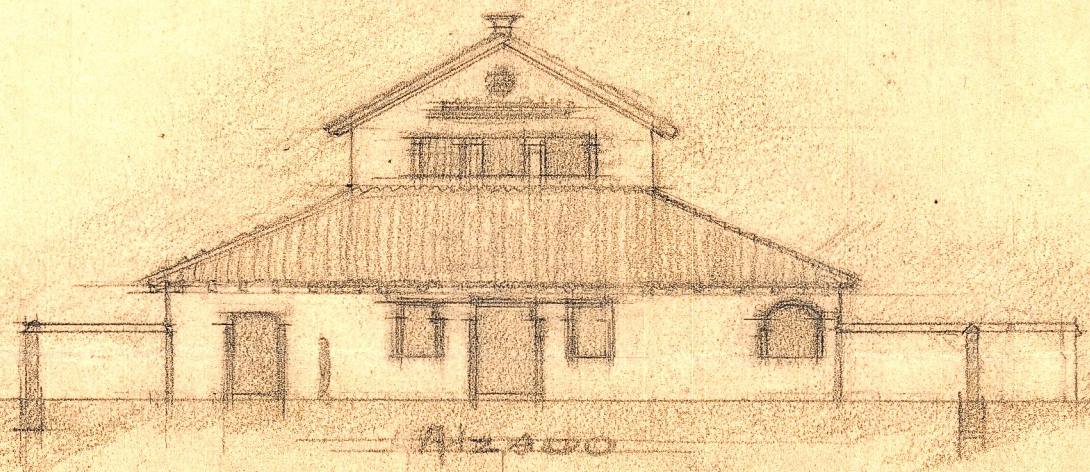
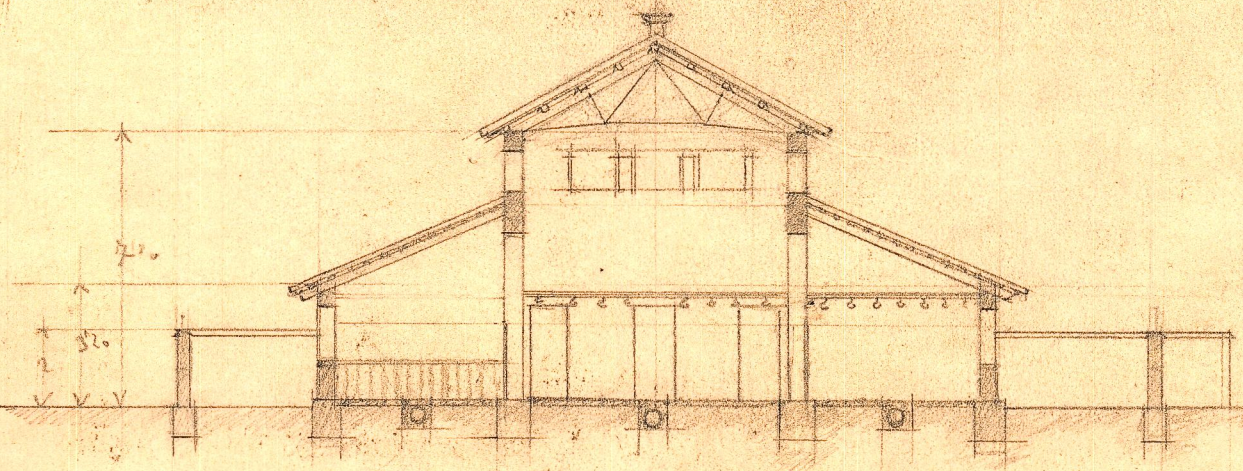


Fig. 100

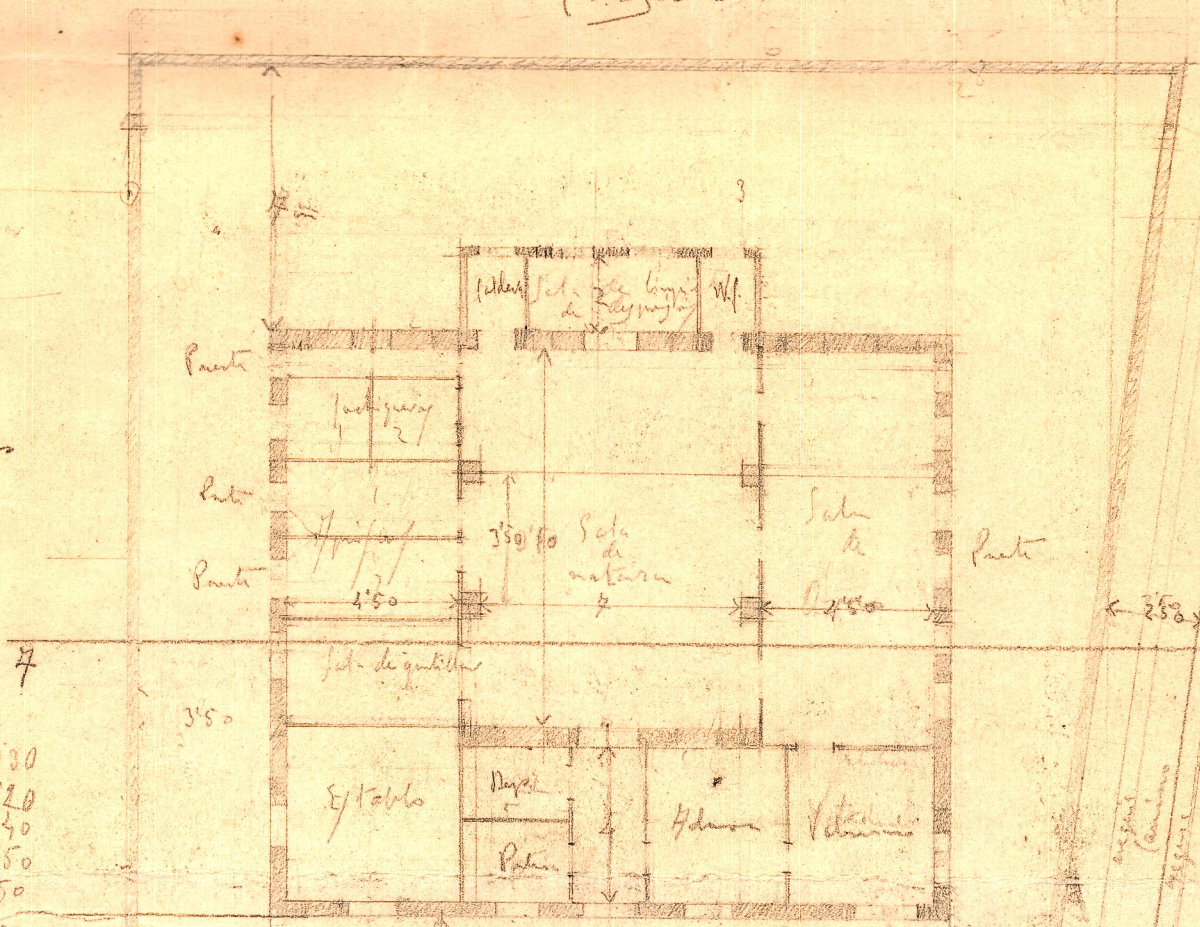


Sección AB

(Carpas)

0.50
1.00
0.50
4.50
0.40
154.0

Carpas



0.30
3.20
0.40
4.50
0.50
1.00
0.50
4.50
0.40
3.10
0.30
24.70
6.20
18.50
9.20

3.70
3.10
6.70

13-1-25