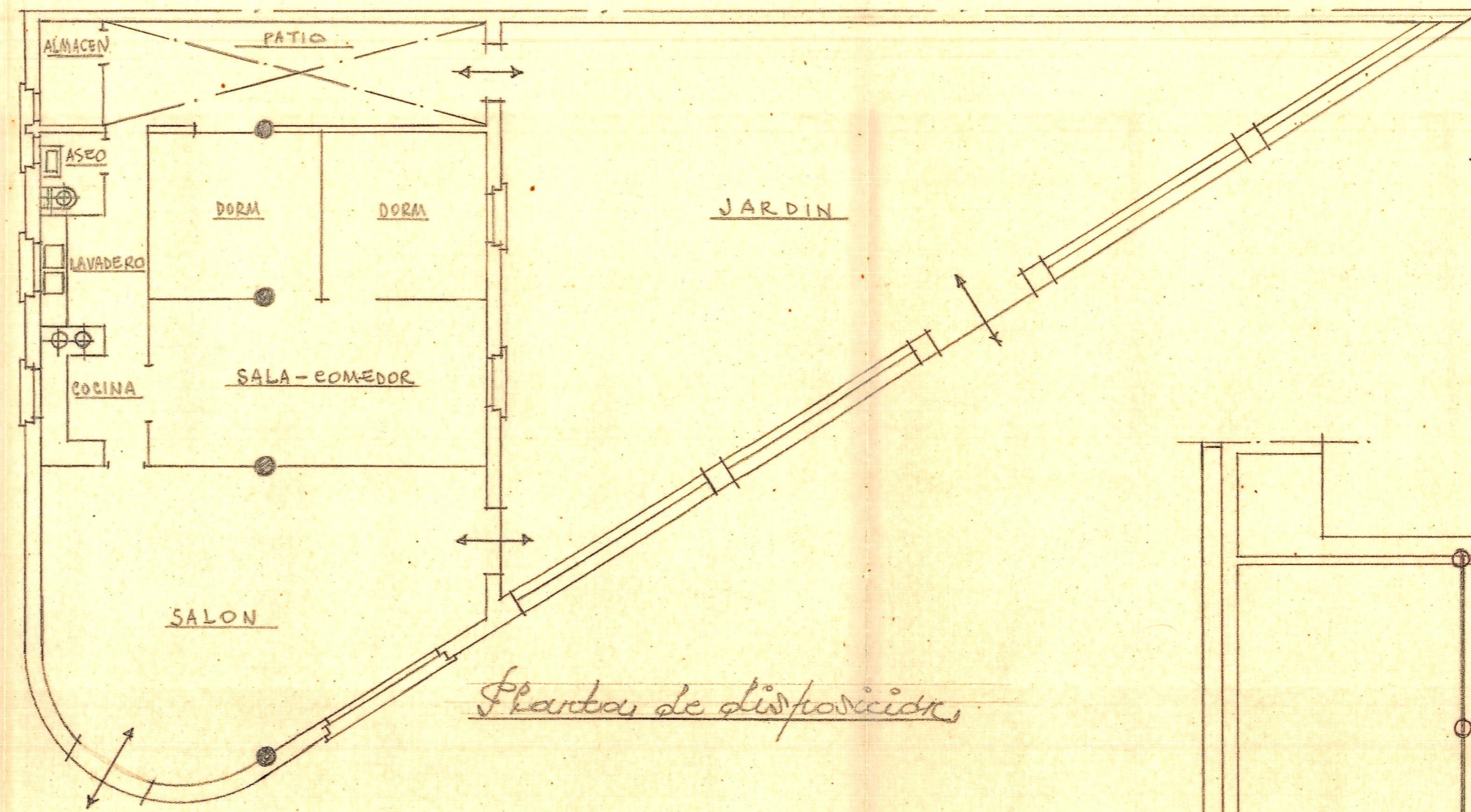
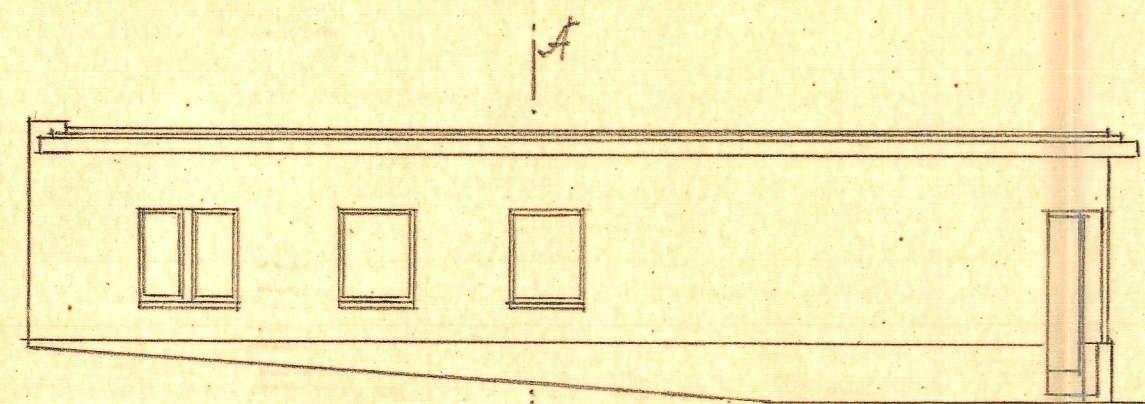


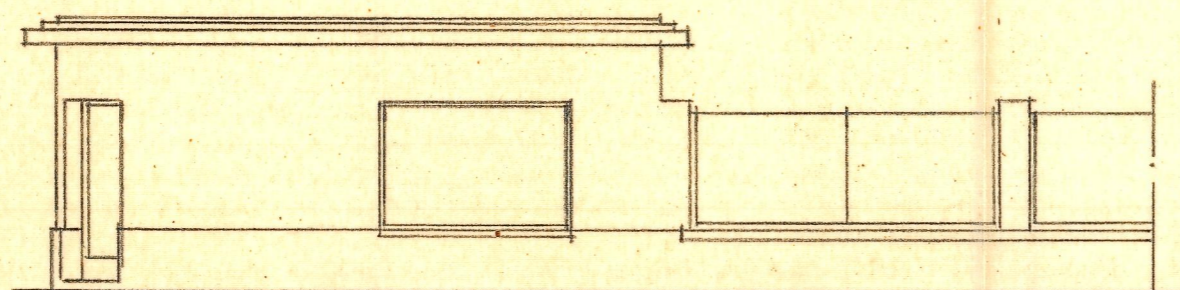
Planta de orientación y desagües



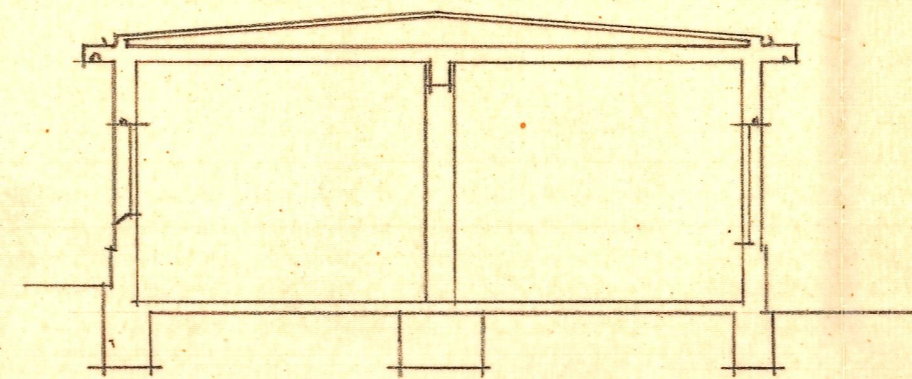
Planta de disposición



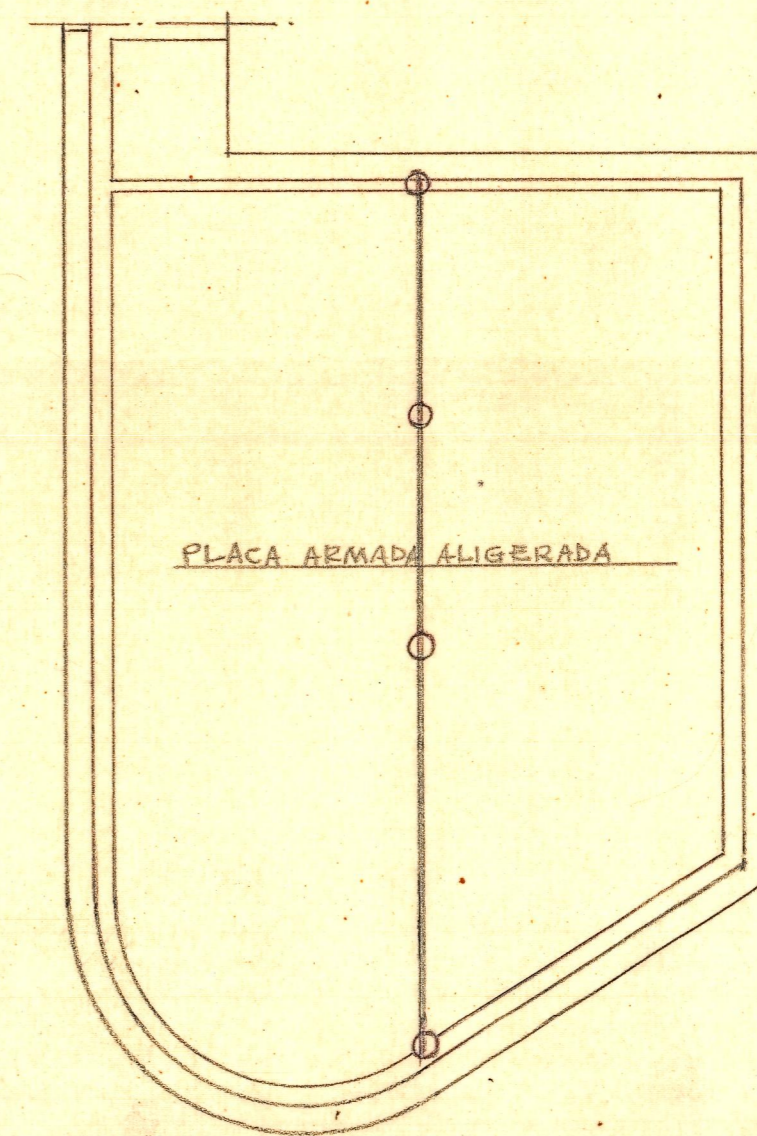
Fachada a la Calle de Vicente Andrés



Fachada a la calletera



Sección transversal A-B.

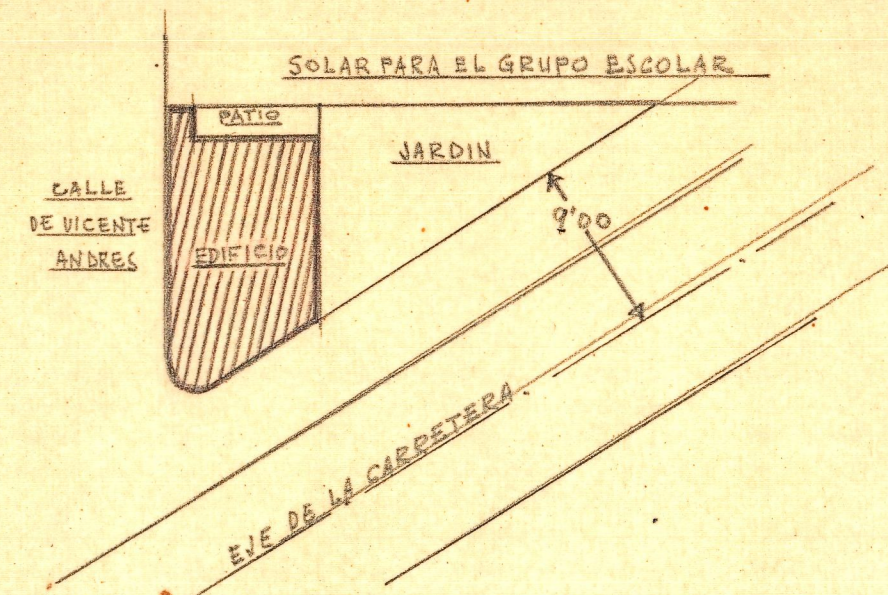


Estructura de cubierta

EDIFICIO EN SERRA

ESCALA = 1:2100

Valencia y Madrid de 1959
EL ARQUITECTO



Suplemento E=1:400