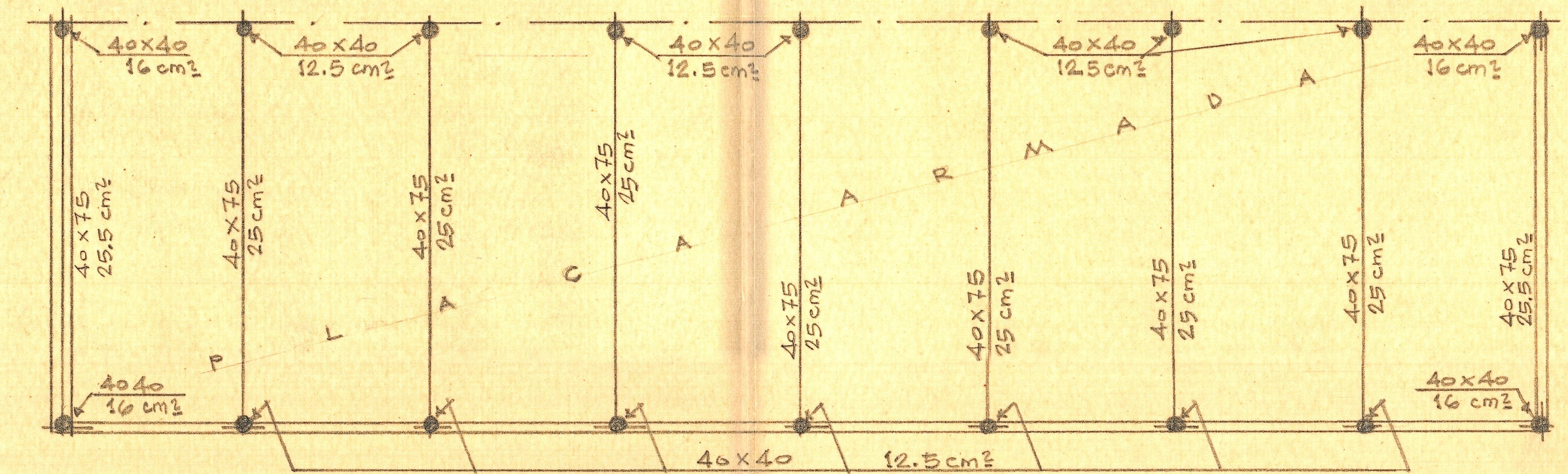
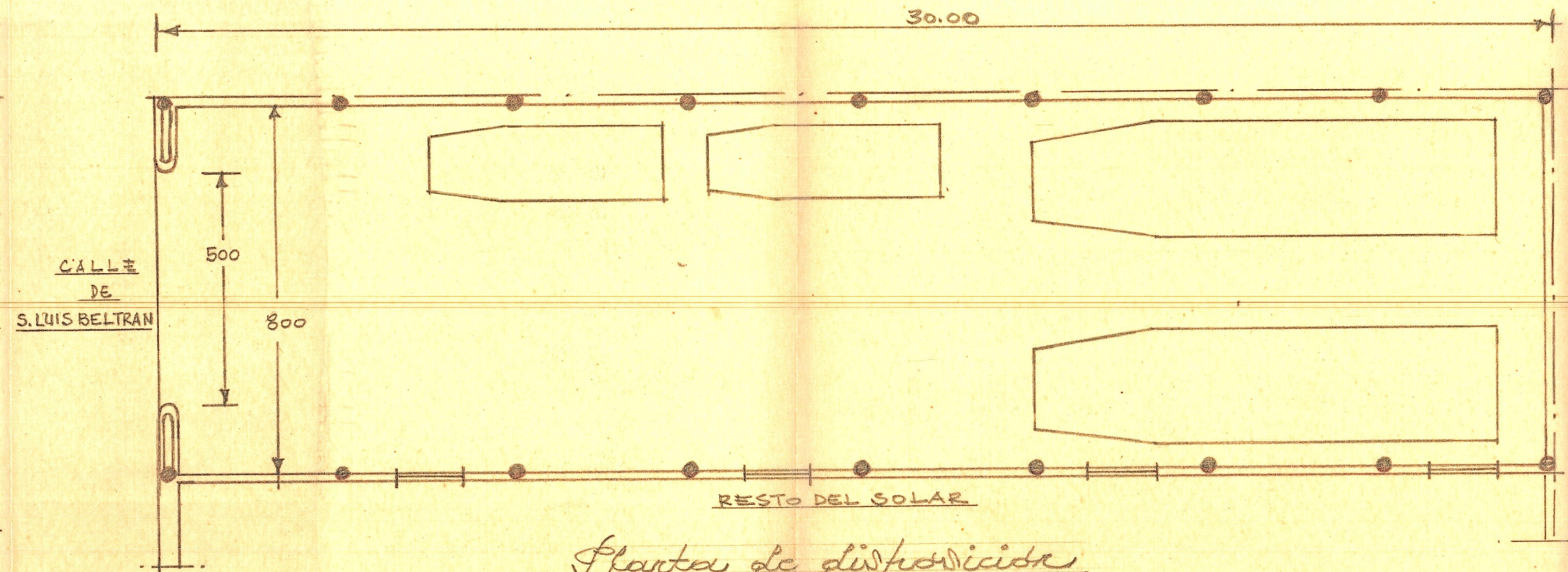


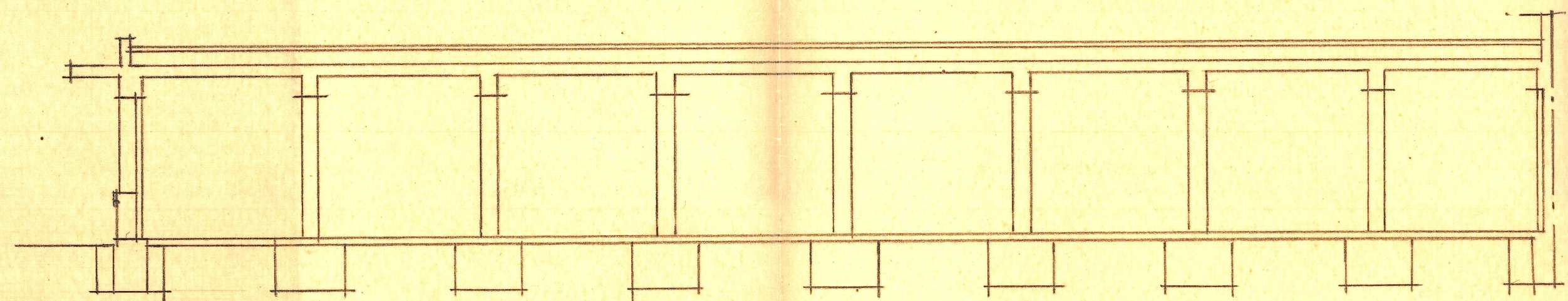
*Planta de cubierta*



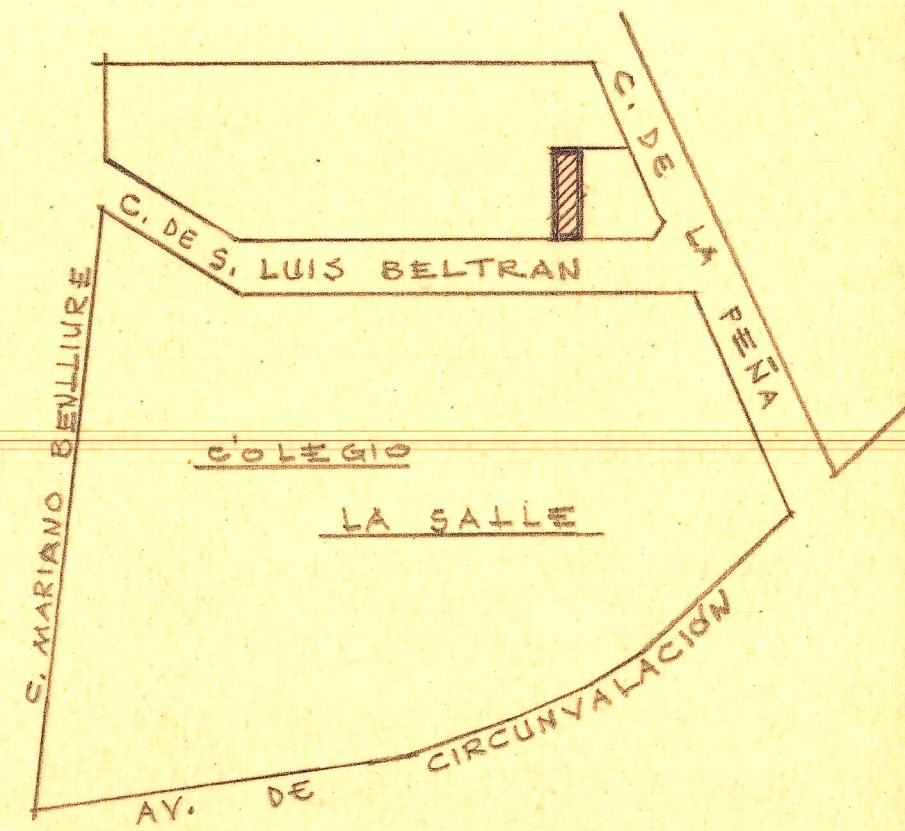
*Detallado de cubierta y soporte*



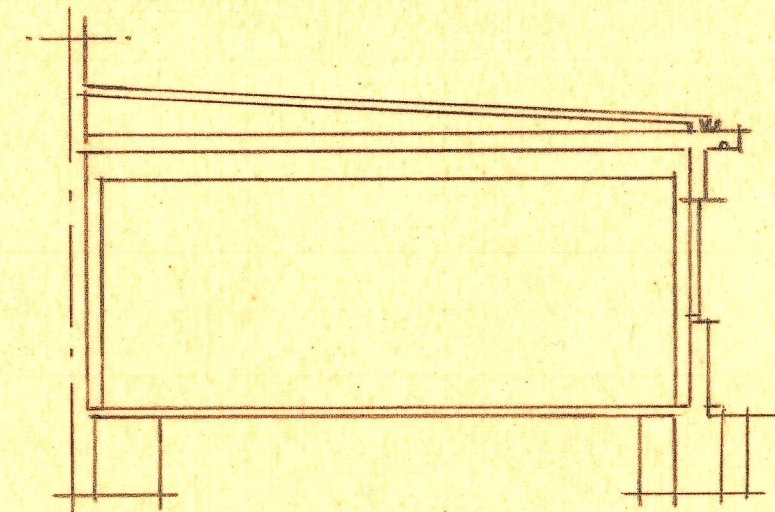
*Planta de disposición*



*Sección longitudinal*



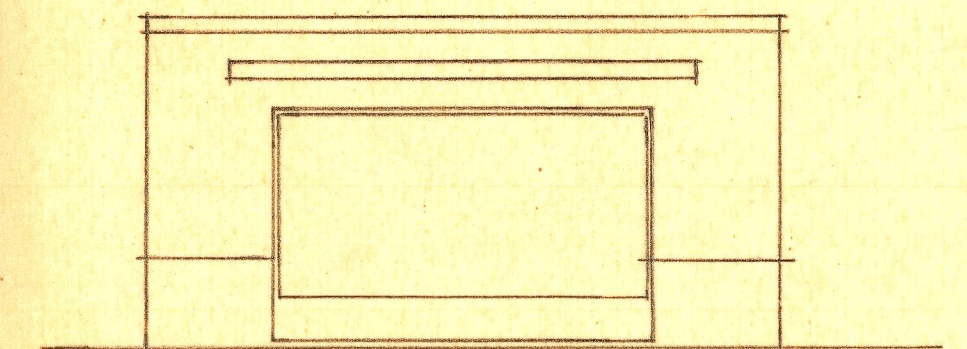
*Empalme I=1:2000*



*Sección transversal*

NAVE PARA GARAGE EN PATERNA  
COLEGIO LA SALLE - E=1:100 -

*Valencia, Junio de 1961*  
EL ARQUITECTO



*Fachada*