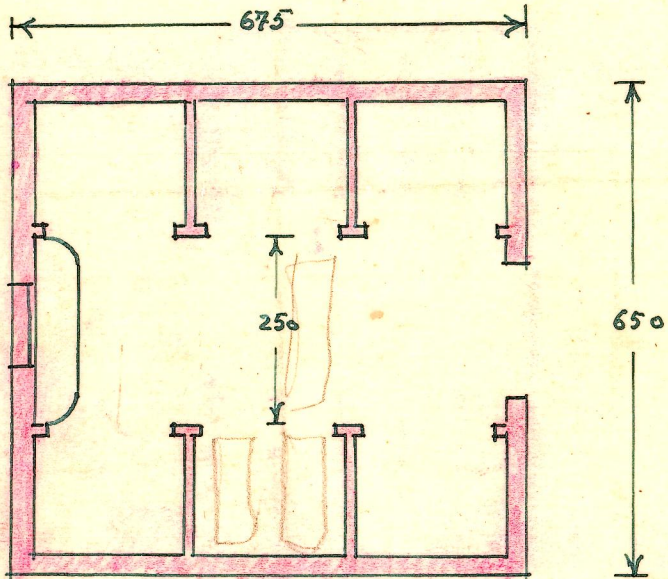


EX:100

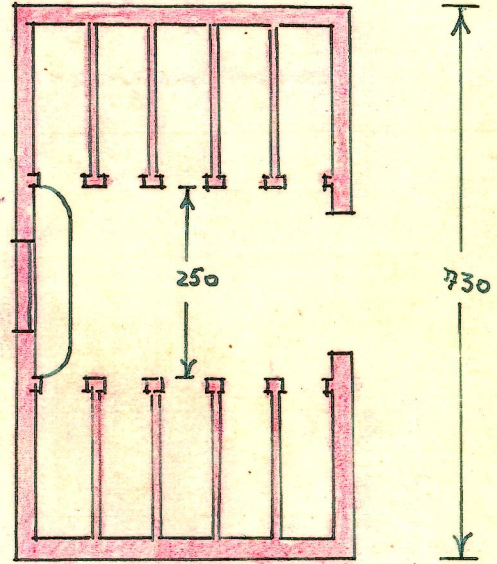
$$\begin{array}{r}
 675 \\
 650 \\
 \hline
 3575 \\
 4050 \\
 \hline
 43875
 \end{array}$$


43.87 m²
18 nichos dobles

460

$$\begin{array}{r}
 730 \\
 460 \\
 \hline
 438 \\
 292 \\
 \hline
 3358 \text{ m}^2
 \end{array}$$

50 nichos sencillos



33.58 m²
30 nichos sencillos