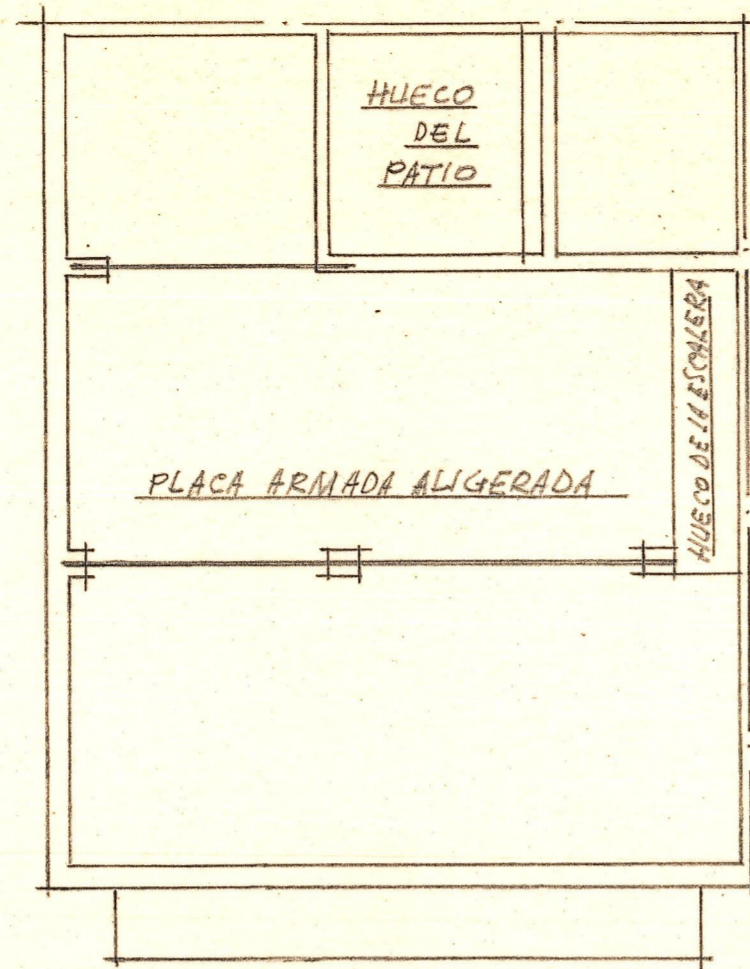
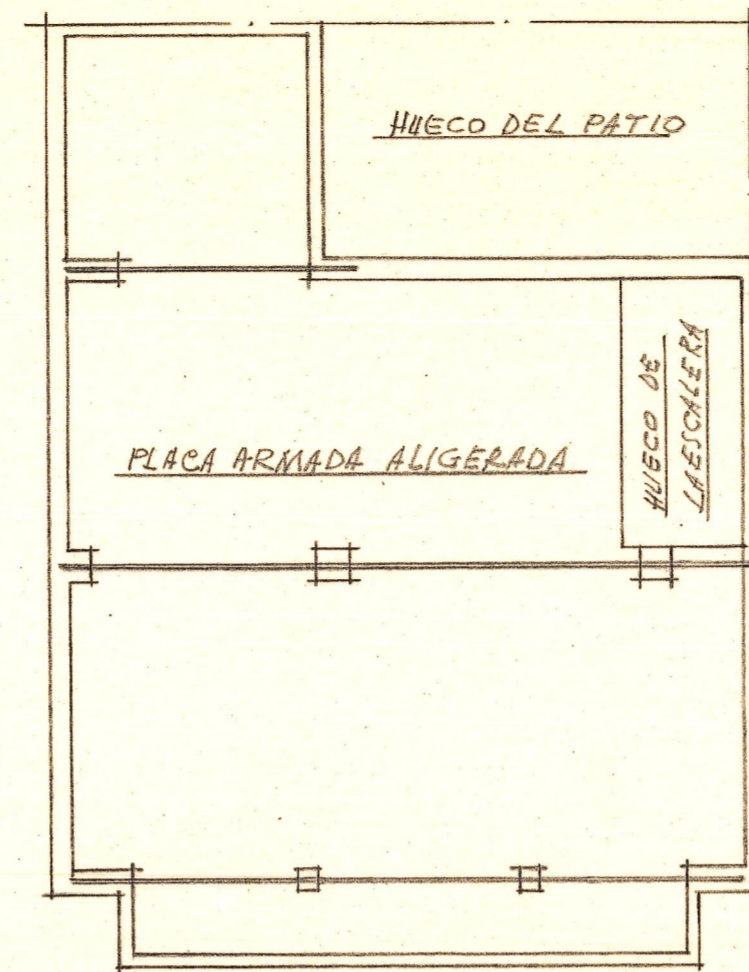


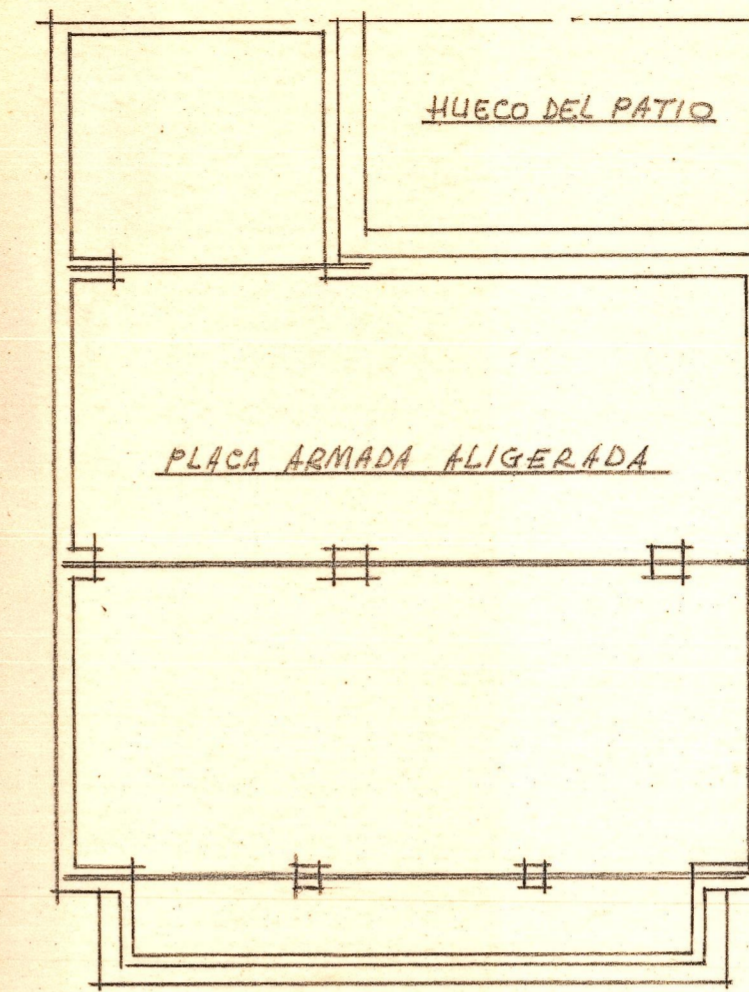
Planta de sirientos y pesaques



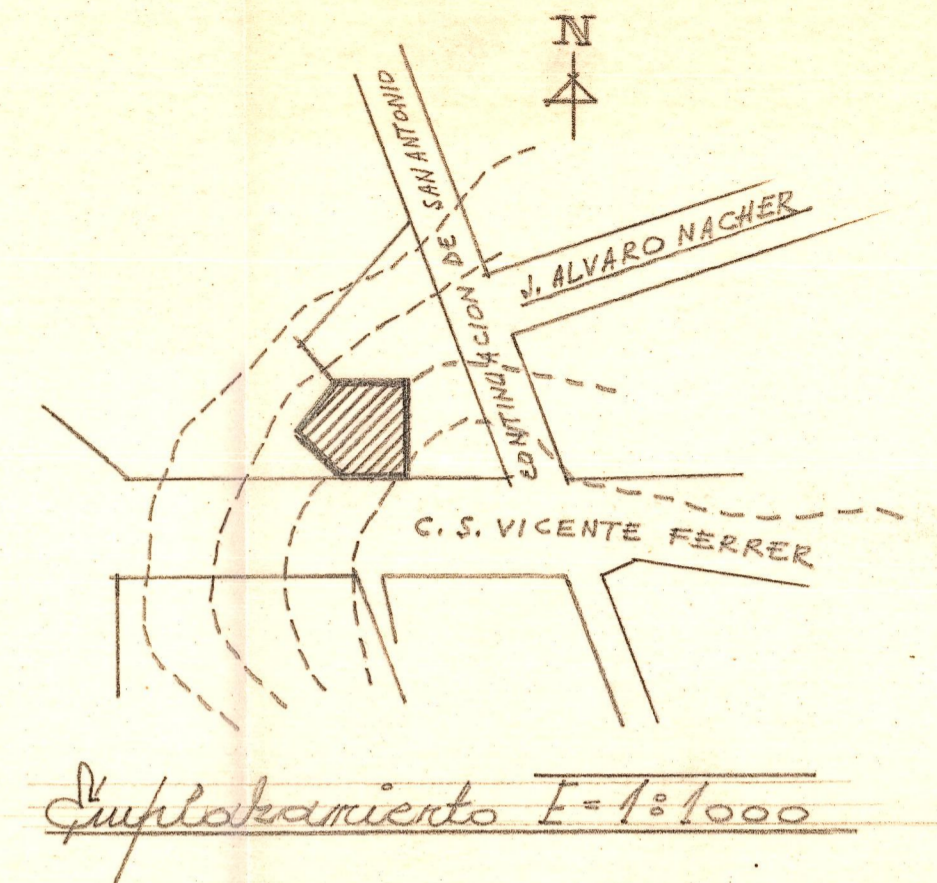
Primer entramado de fijo



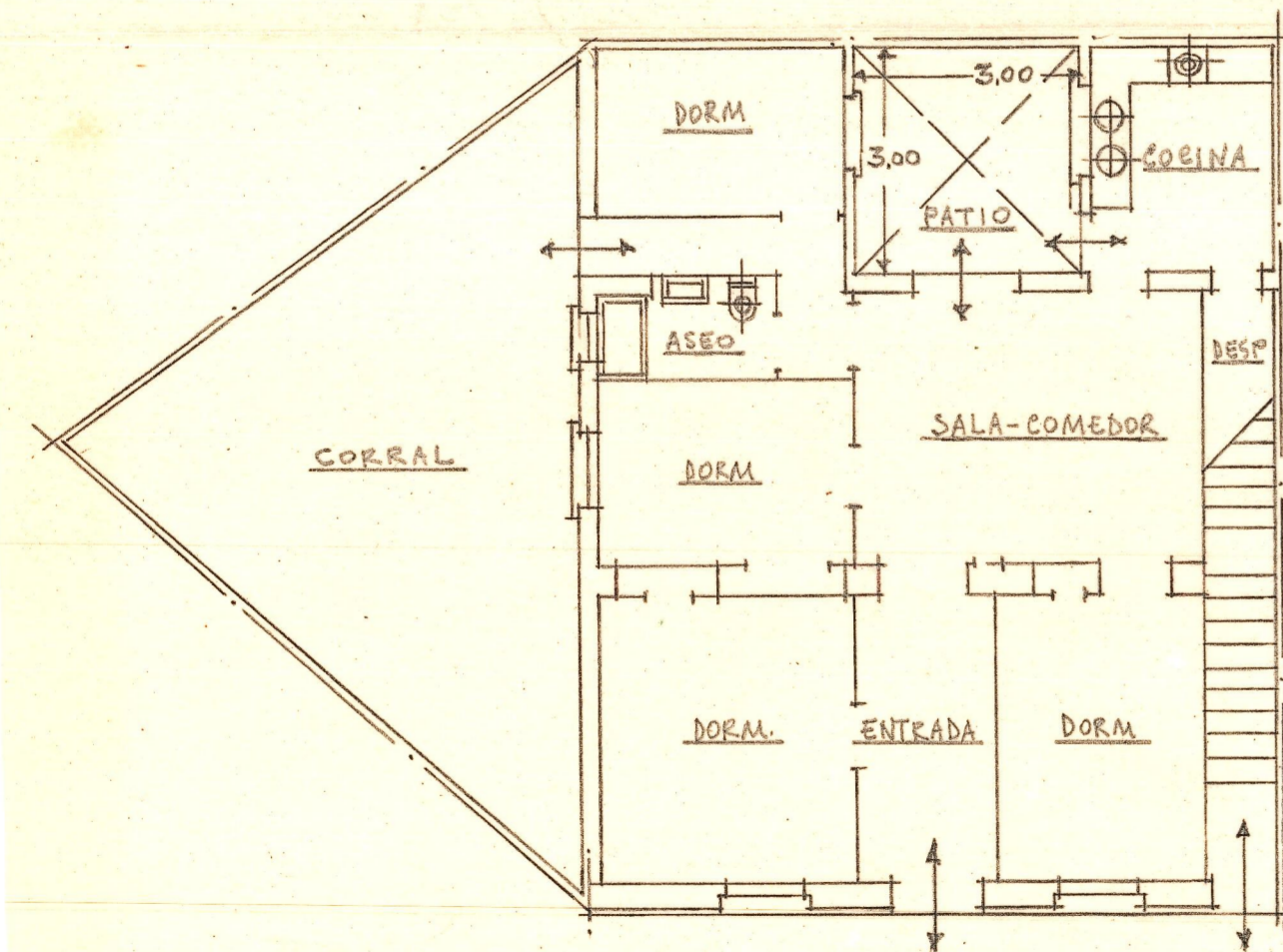
Segundo entramado de fijo



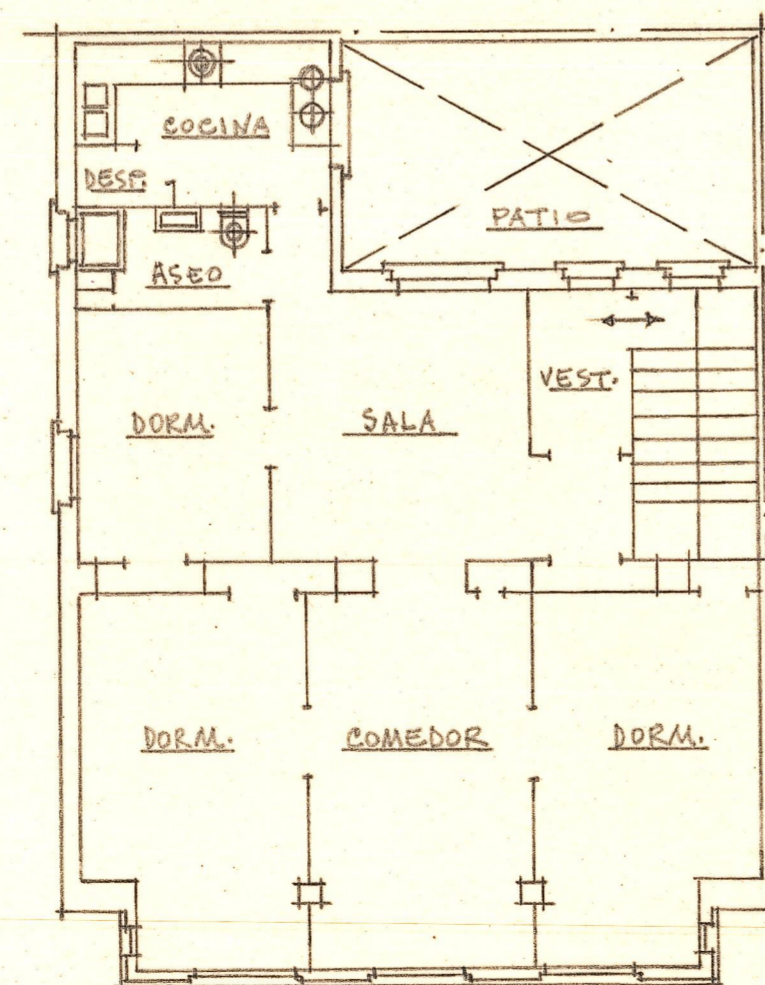
Entramado de cubierta



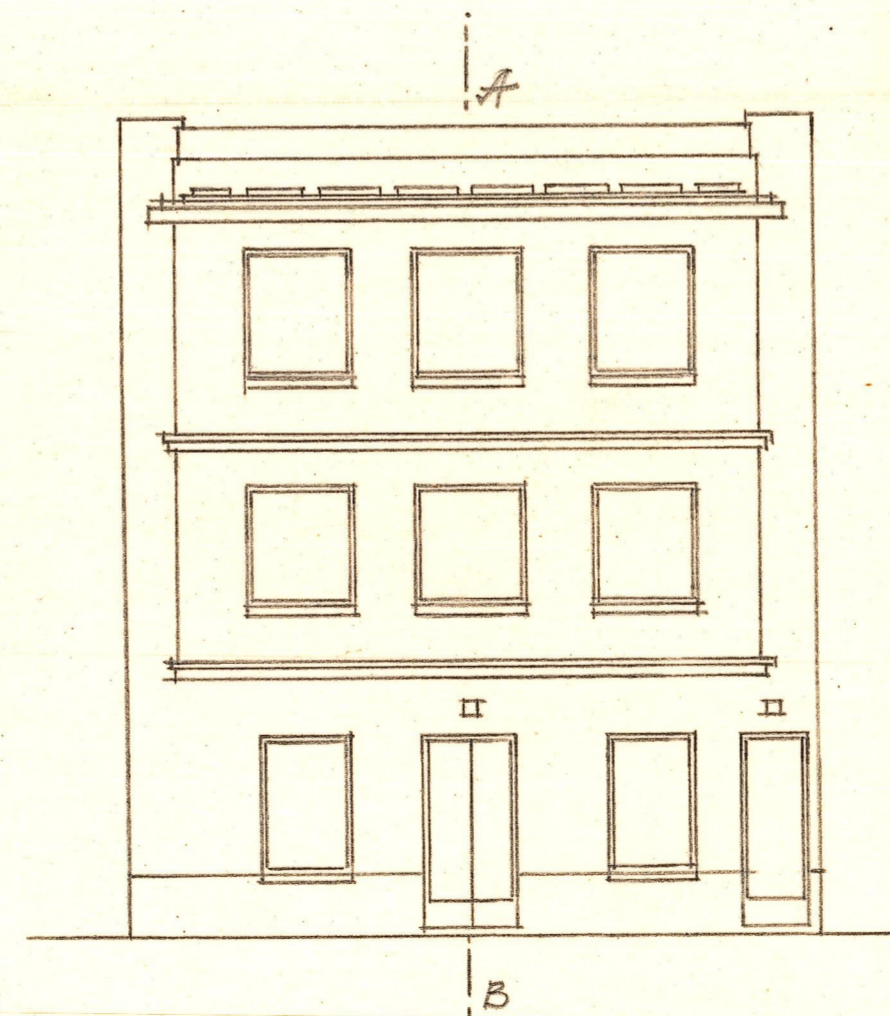
Suplemento E=1:1000



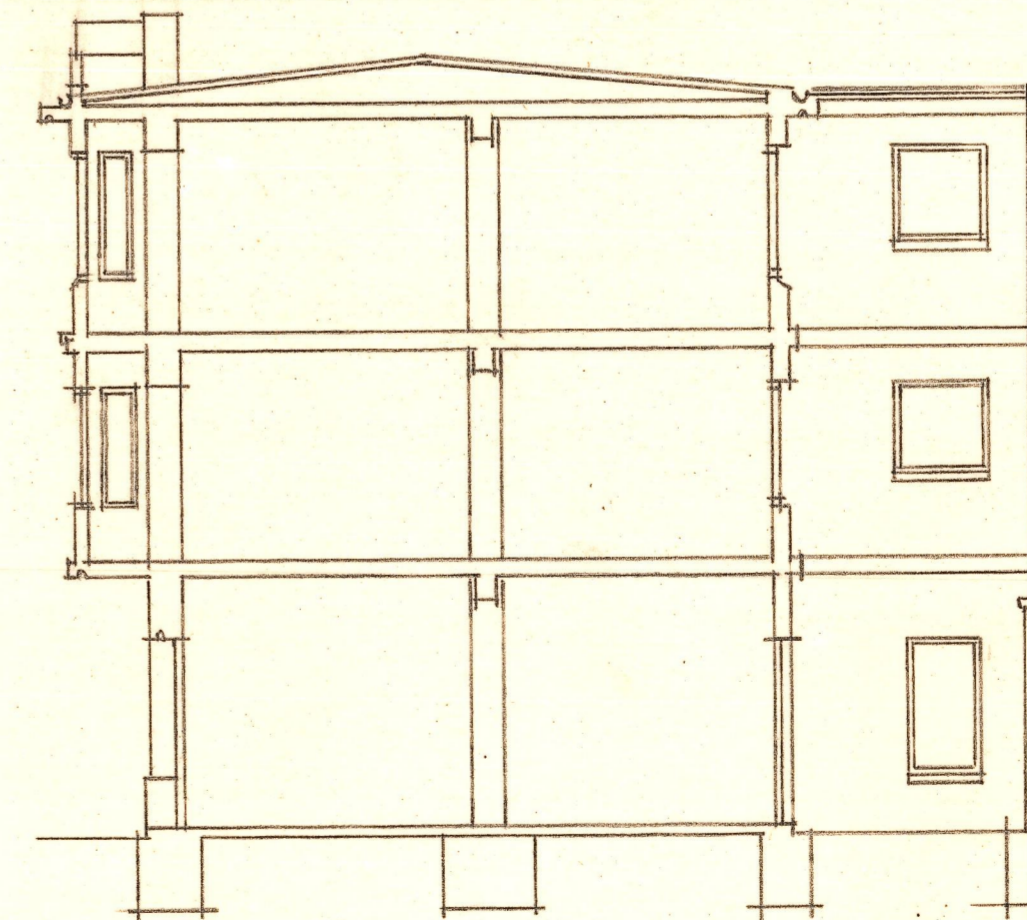
Planta baja (disposicion)



Plantas altas (disposicion)



Fachadas



Seccion por A-B.

EDIFICIO DE TRES PLANTAS
PARA VIVIENDAS SUBVENCIONADAS
EN MOGENTE - PROPIETARIO =
D. CECILIO JORDA HERNANDEZ

ESCALA = 1:1000

Valencia y Mayo de 1959
EL ARQUITECTO