

PILESTREDET 77-79 OSLO, NORUEGA

PILESTREDET 77-791 OSLO, NORWAY

Arquitectos / Architects: Reiulf Ramstad Arkitekter · **Ciente / Client:** Aspelin Ramm Eindom AS · **Tipología / Type:** Residencial / Residential · **Programa / Program:** Edificio de 59 apartamentos residenciales, café y parking / Building of 59 residential flats, café and car park · **Emplazamiento / Location:** Rauma, Møre og Romsdal, Norway · **Tamaño / Area:** 7.100 m² · **Origen del encargo / Commission type:** Invitación a concurso (2015) / Invitation to competition (2015) · **Estado actual / Status:** Obra completada / Completed (2020) · **Créditos de imágenes / Photo credits:** Ivar Kvaal, Reiulf Ramstad Arkitekter

DOI: <https://doi.org/10.4995/eb.2021.15175>









Planta de Situación. Location Plan

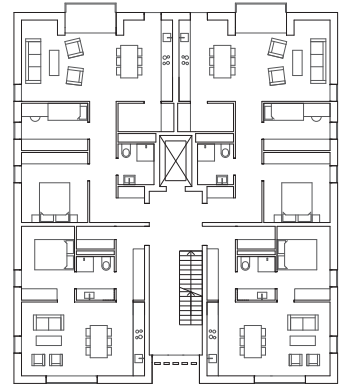
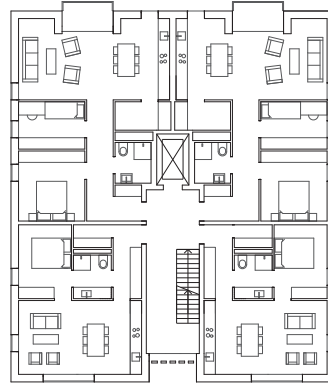
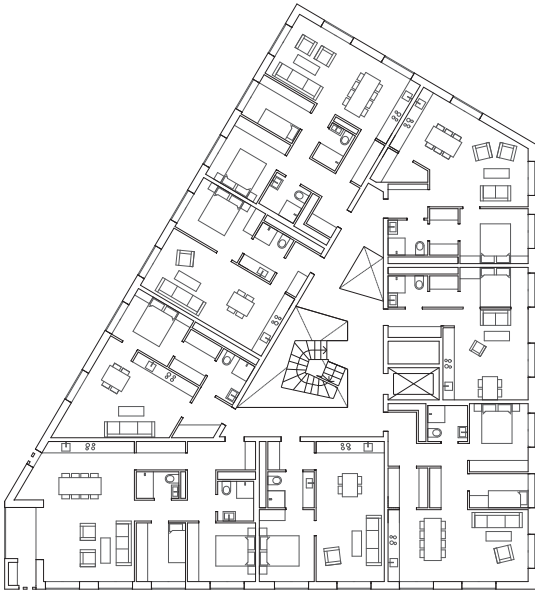


P77-79 es un edificio que contiene innovadores y atractivos apartamentos en Fagerborg, un barrio residencial de Oslo. El proyecto está diseñado de forma sensible para responder a los edificios históricos colindantes, pertenecientes a los siglos XVIII y XIX. Consta de tres edificios que aumentan gradualmente de cuatro a seis pisos. Con vistas al sur hacia Pilestredet, el volumen más grande organiza de seis a ocho unidades diferentes por piso alrededor de una sala central abierta. Los dos edificios más pequeños, situados al norte y orientados hacia el parque, comparten la misma huella y una tipología que se diversifica en cuatro apartamentos por cada nivel. Las áreas comunes ofrecen un ambiente compartido robusto, positivo y elegante para los residentes, con acceso a los jardines situados en la azotea que a su vez tienen vistas al parque y la ciudad. En conjunto, P77-79 reúne una gama variable apartamentos de diferentes tamaños e identidades, ofreciendo entornos de vida de calidad para una diversidad de personas en diferentes puntos vitales, asegurando, de este modo, el principio de una comunidad diversa y viva.

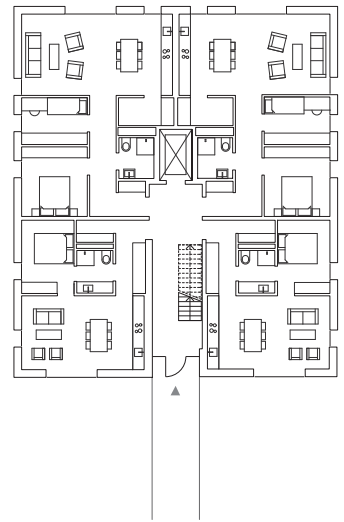
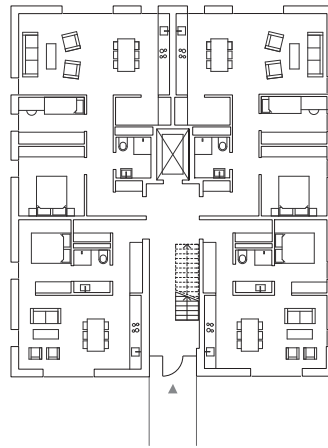
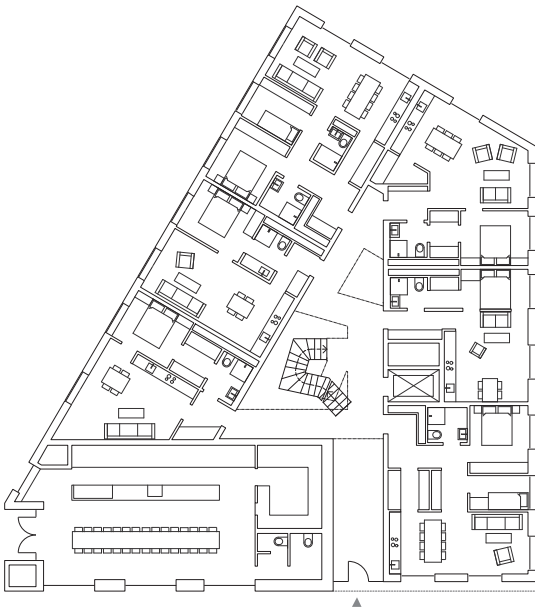
P77-79 introduces innovative and attractive apartments in Fagerborg, a residential neighbourhood in Oslo. The project is designed sensitively to respond to the surrounding historic buildings from the 18th and 19th centuries. It consists of three buildings increasing gradually from four to six floors. Facing south towards Pilestredet, the larger one organises six to eight different units per floor around a central open hall. The two smaller buildings, to the north and directed towards the park, share the same footprint and a principle of four apartments on each level. The common areas offer a robust, positive and elegant shared environment for the residents, who have access to rooftop gardens with views over the park and the city. As a whole, P77-79 assembles a varied range of apartments of different sizes and identities, offering quality living environments for a diversity of people in different life situations and ensuring a diverse and lively community.





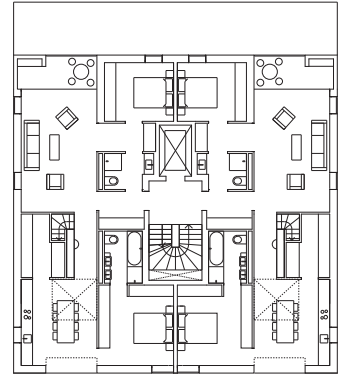
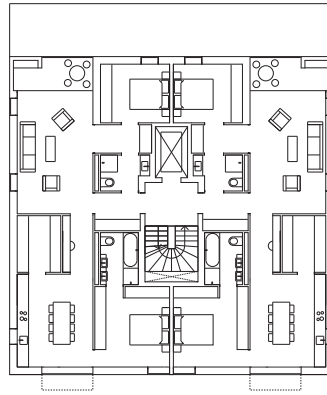
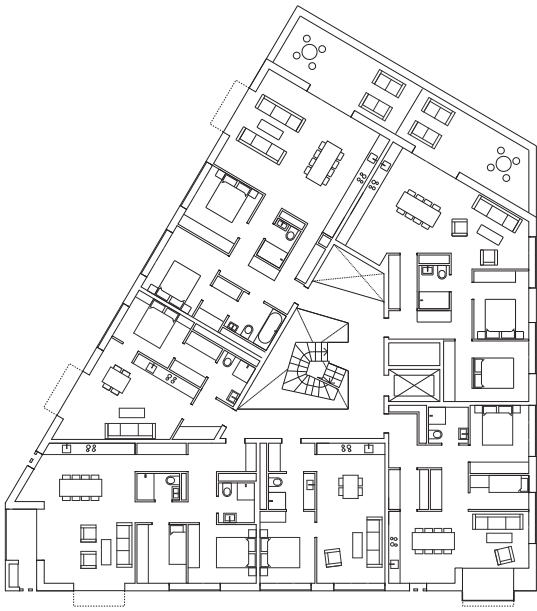


Planta Primera. First Floor

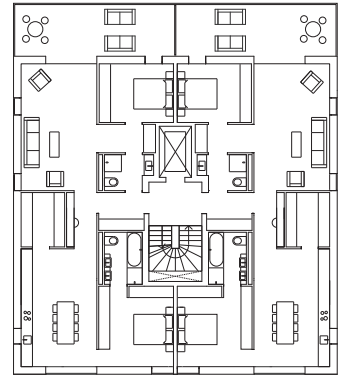
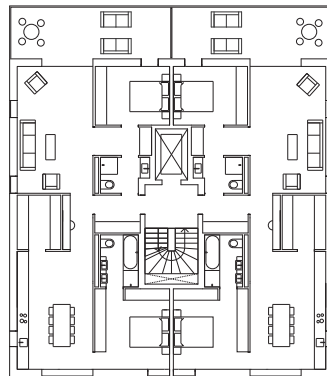
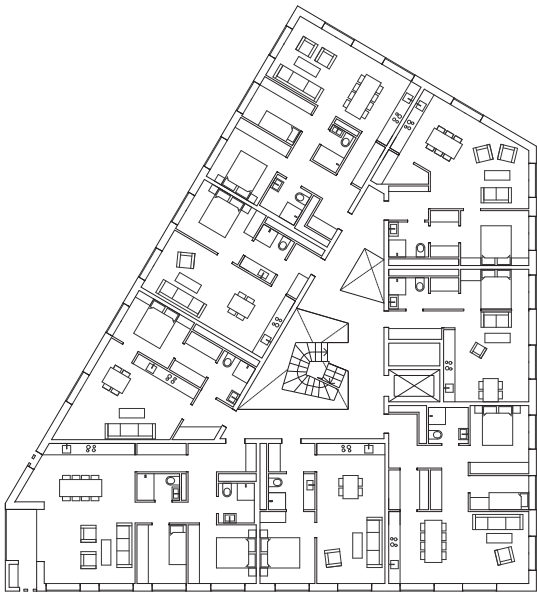


Planta Acceso. Access Floor

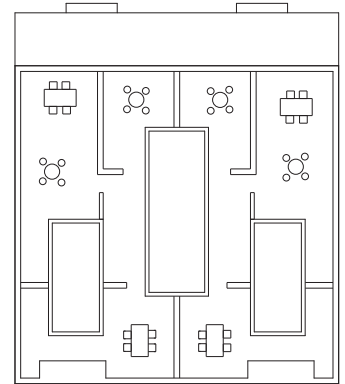
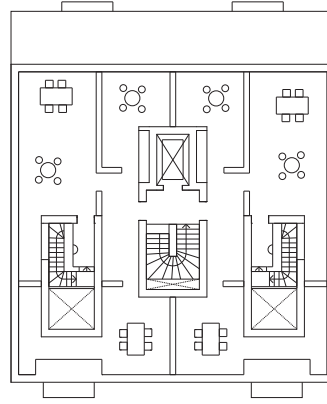
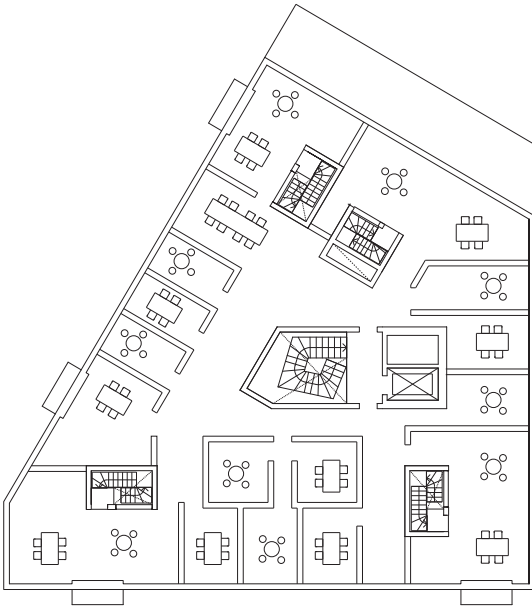




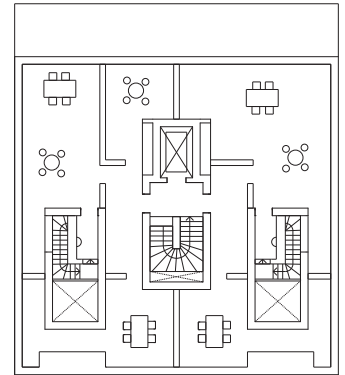
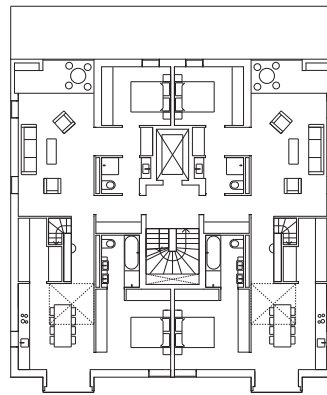
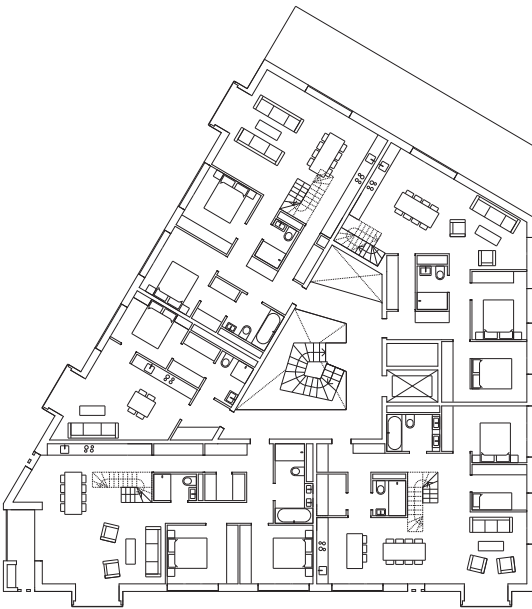
Planta Tercera. Third Floor



Planta Segunda. Second Floor

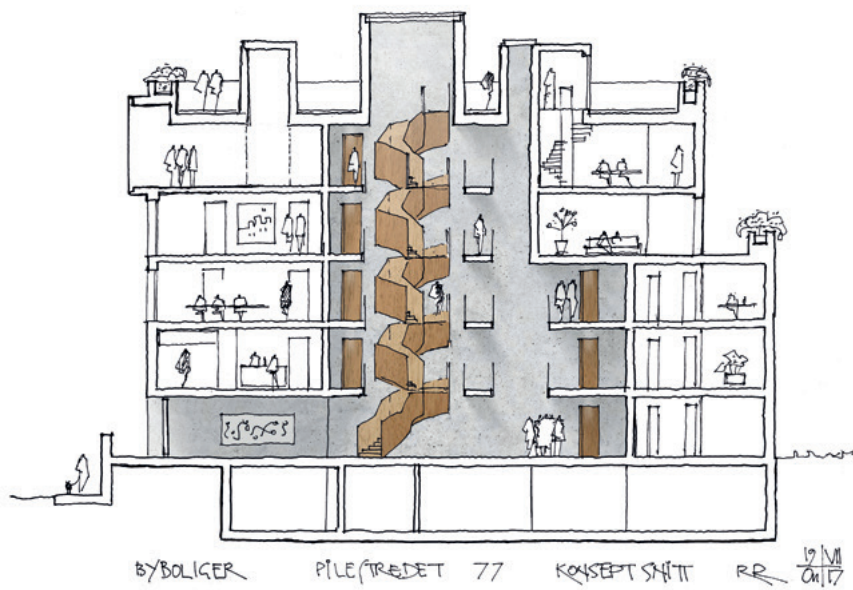


Planta Quinta. Fifth Floor

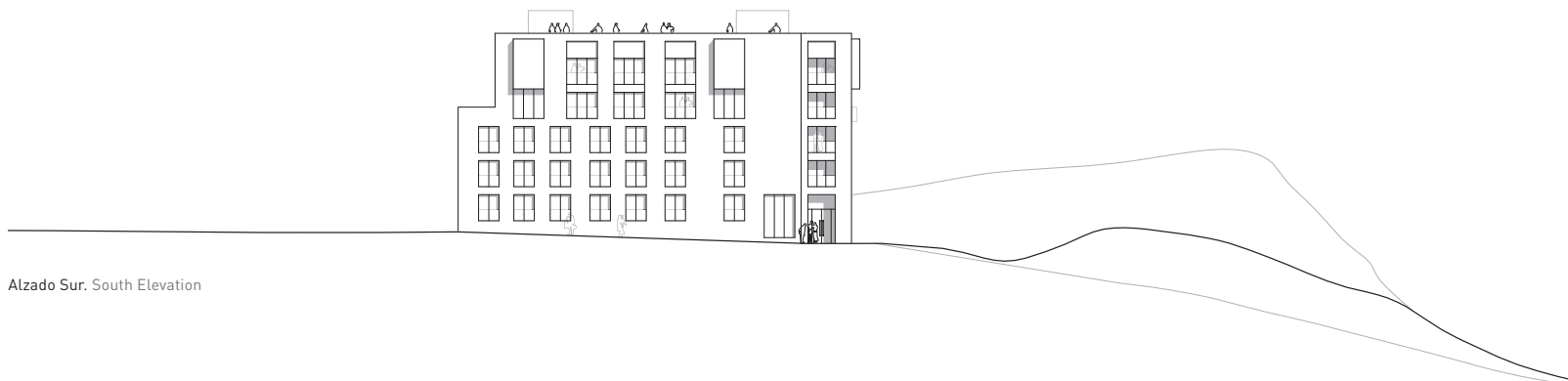


Planta Cuarta. Fourth Floor

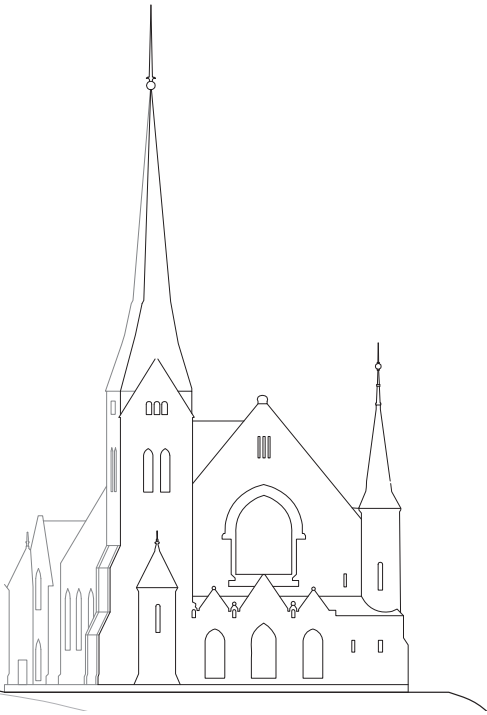
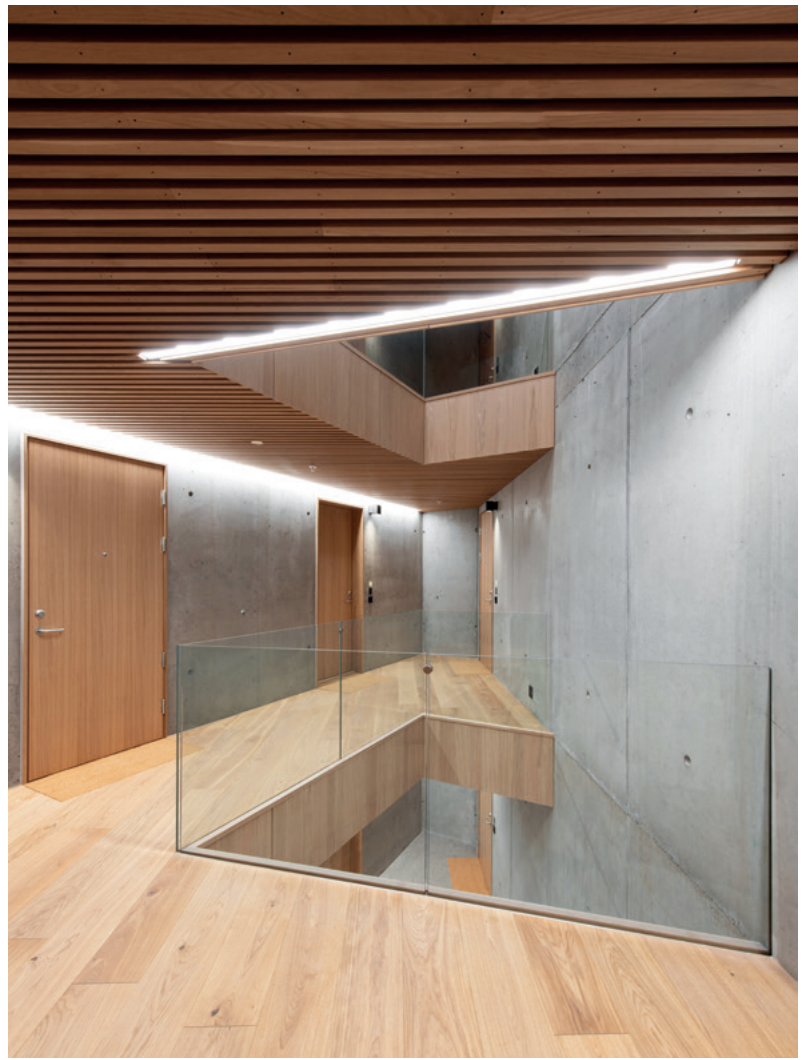




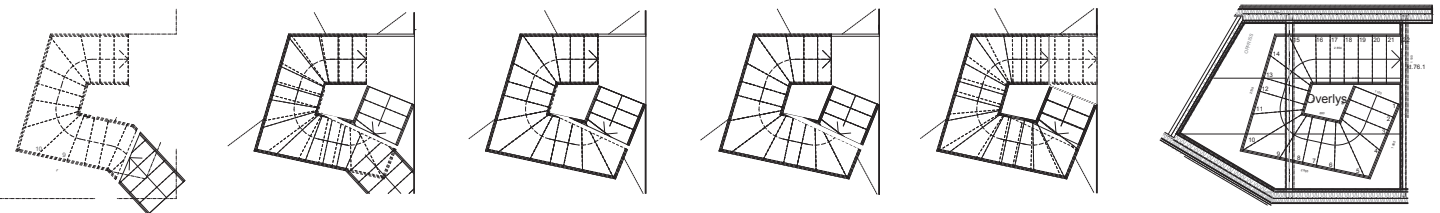
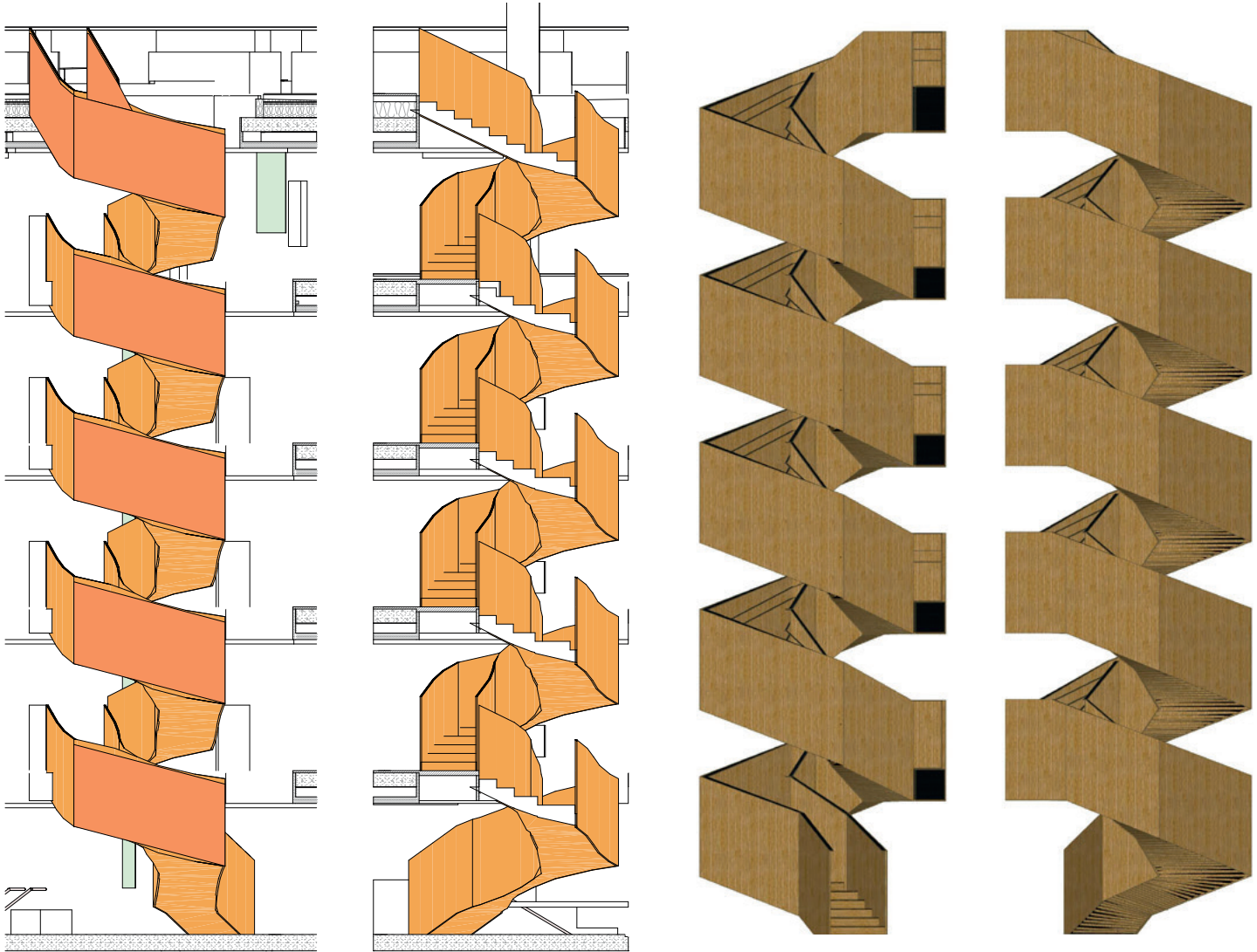
Alzado Este. East Elevation

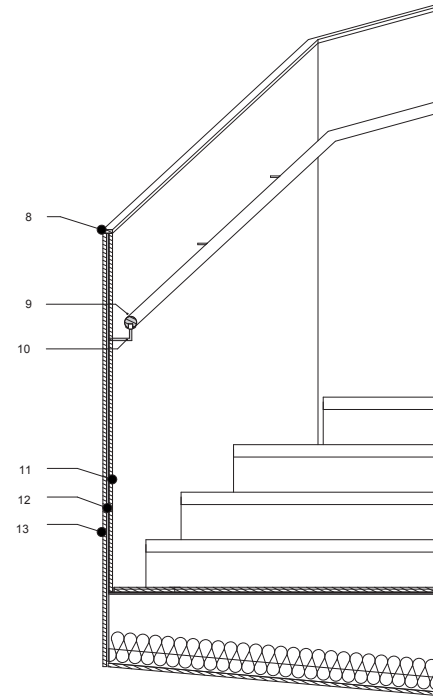
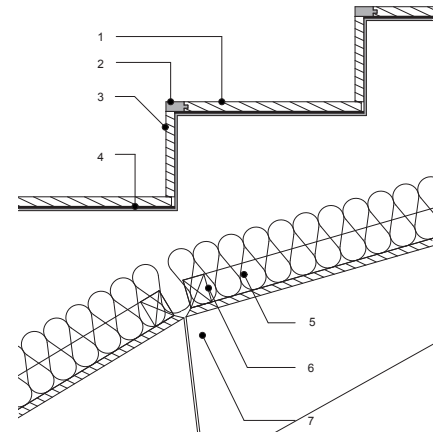


Alzado Sur. South Elevation



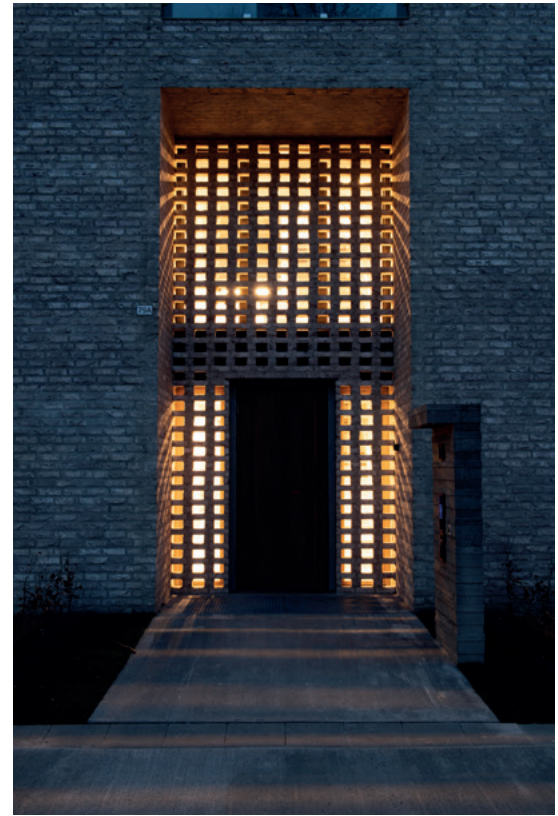
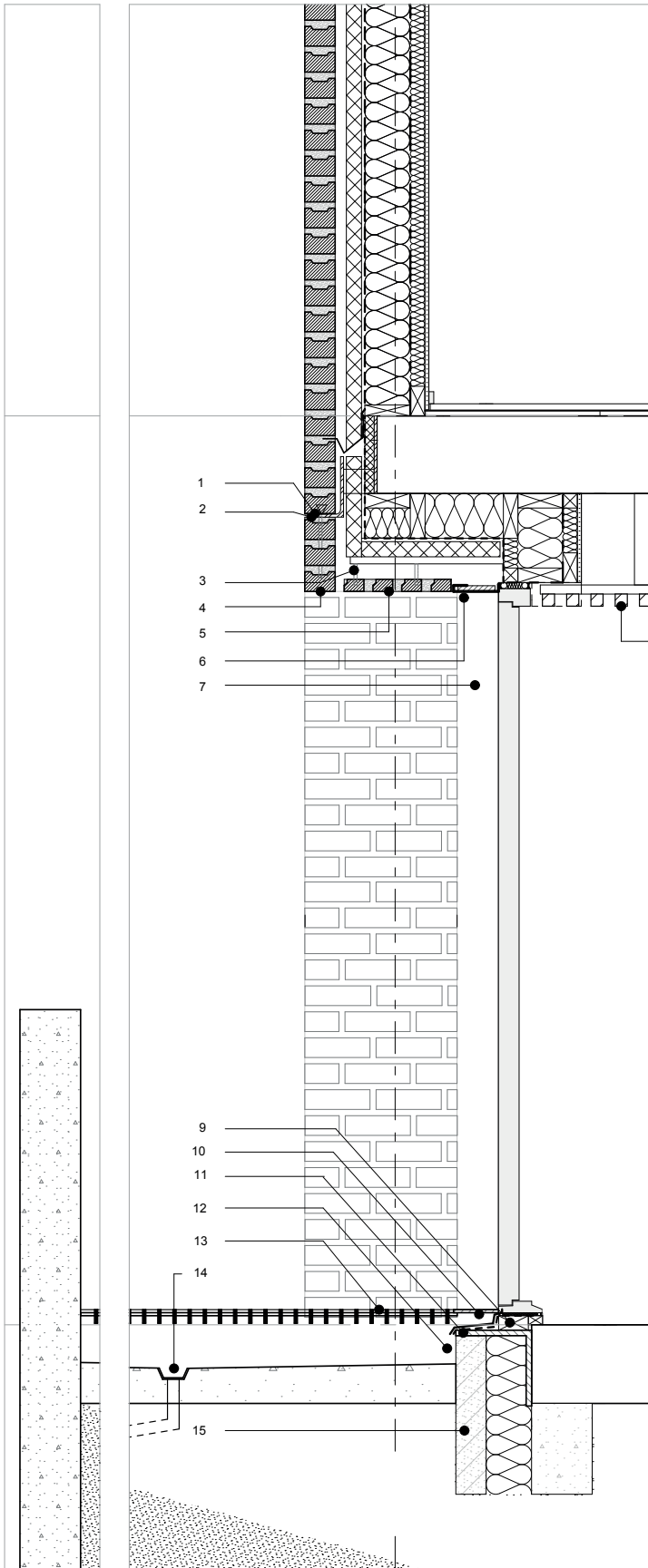
0 5 25 m





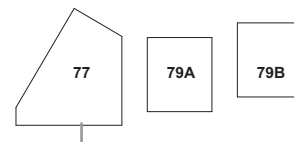
Detalle de escalera. Stair detail

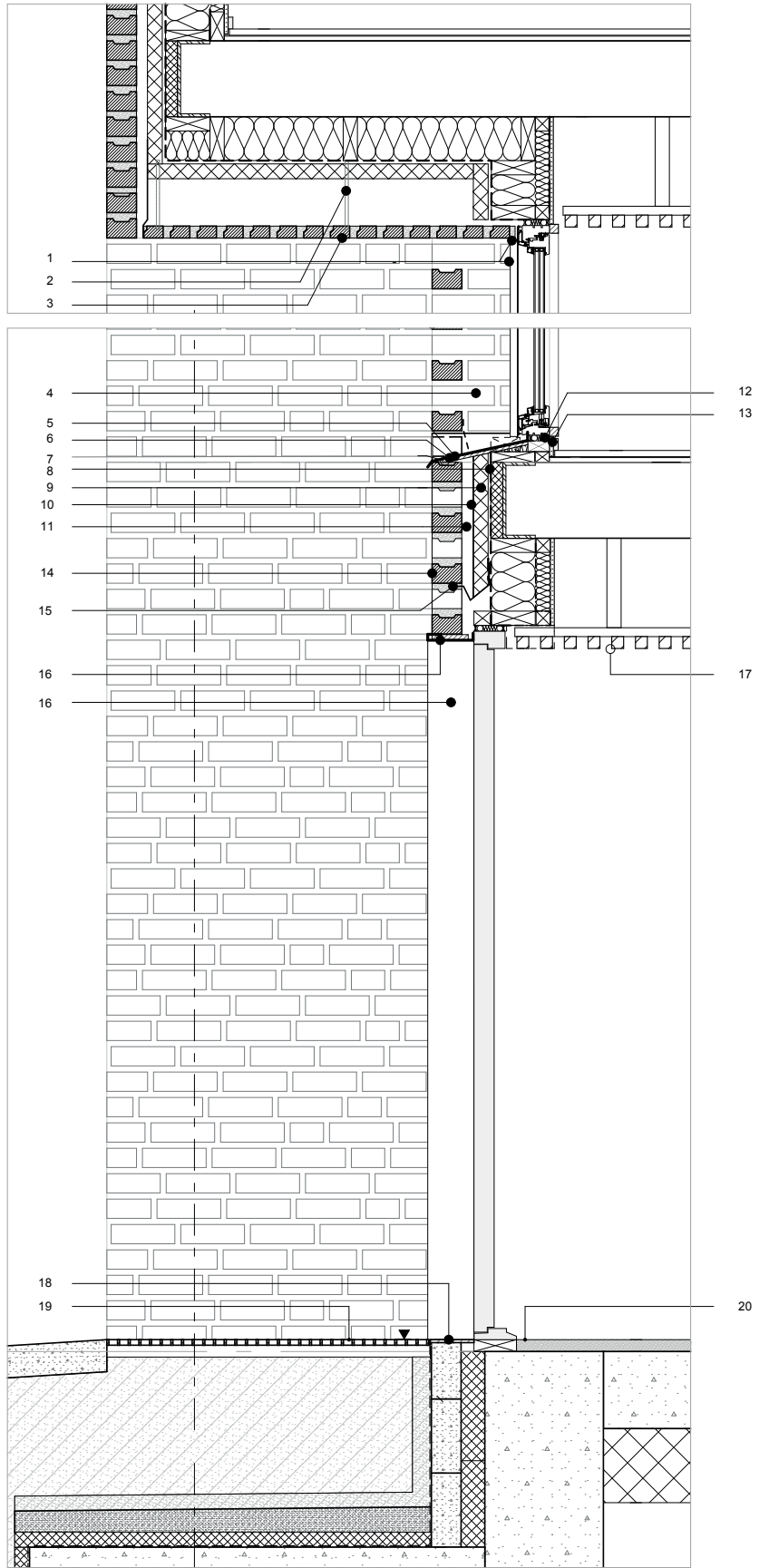
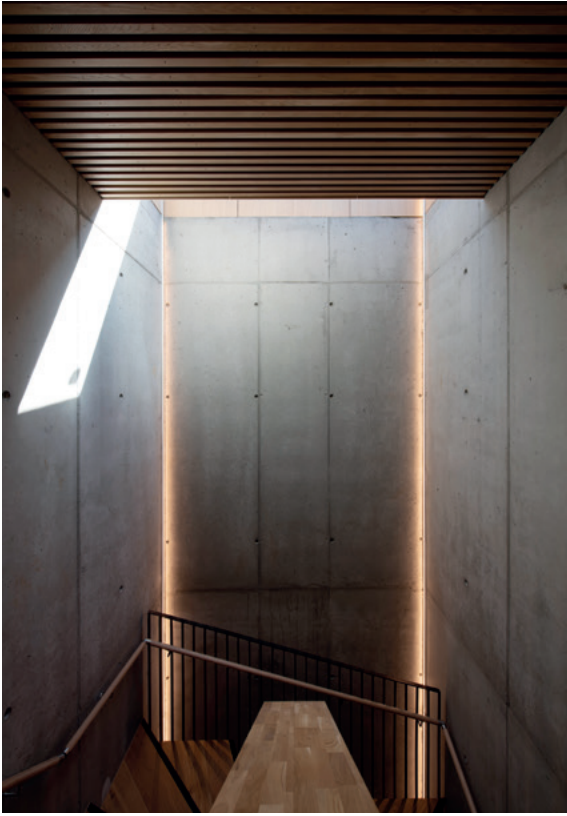
- | | |
|--|---|
| <p>1. Huella: parquet de roble
Tread: oak parquet</p> <p>2. Nariz: roble fumé
Nosing: smoked oak</p> <p>3. Contrahuella: parquet de roble
Riser: oak parquet</p> <p>4. Superficie acústica absorbente
Sound-absorbing Surface</p> <p>5. Aislamiento acústico 100 lana mineral
Acoustic insulation 100 mineral wool</p> <p>-6. Anclaje de 36 x 48 mm para techo suspendido
36x48mm nail stroke for suspension ceiling</p> <p>7. Revestimiento de chapa de roble de 12 mm
12mm oak veneer cladding</p> | <p>8. Remate superior de madera maciza de roble de 2 mm
2mm oak solid wood top strip</p> <p>9. Pasamanos de madera maciza de roble de 40 mm con tira de luz empotrada
40mm oak solid wood handrail with recessed light strip</p> <p>10. Perno de acero
Steel bolt</p> <p>11-13. Revestimiento de chapa de roble de 2 mm.
2mm oak veneer cladding</p> <p>12. Montante de acero de 8 mm
8 mm steel construction</p> |
|--|---|



Sección longitudinal acceso principal P77
Main entrance longitudinal section P77

- | | |
|--|---|
| <ol style="list-style-type: none"> 1. Lámina de muro de 2 mm entre soporte y ladrillo
2mm wall foil between bracket and brick 2. Soporte de acero
Steel bracket 3. Dintel de ladrillo con estructura de madera.
Brick ceiling with wooden bearing 4. Viga de ladrillo
Brick beam 5. Dintel de ladrillo
Brick ceiling 6-7. Recercado de chapa de zinc
Pat-sink cover 8. Falso techo de madera
Wooden ceiling 9. Bastidores
Kubbes 10. Umbral de chapa de zinc
Pat-sink threshold | <ol style="list-style-type: none"> 11. Angular de acero galvanizado de dimensiones y espesor según RIB
Galvanized steel angle dimensions and wall thickness according to RIB 12. Cubrición / Membrana
Cover / membrane 13. Rejilla
Foot scraper 14. Drenaje
Drain 15. Bandeja de drenaje
Drain plate |
|--|---|





Sección longitudinal acceso principal P79
Main entrance longitudinal section P79

- | | |
|--|--|
| 1. Herrajes negros
Black fittings | 11. Cámara de aire
Aeration |
| 2. Estructura en suspensión del dintel de ladrillo
Brick ceiling suspensión | 12. Bastidores
Kubbes |
| 3. Dintel de ladrillo
Brick ceiling | 13. Barrera contravapor
Vapor barrier |
| 4. Fábrica de ladrillo
Brick | 14. Celosía de ladrillo
Lattice brick |
| 5. Herrajes
Fittings | 15. Sellado
Ink |
| 6. Membrana
Membrane | 16. Recercado de chapa de zinc
Pat-sink cover |
| 7. Chapa impermeable
Waterproof veneer | 17. Falso techo de madera
Wooden ceiling |
| 8. Tyvek®
Tyvek® | 18. Umbral de chapa de zinc
Pat-sink threshold |
| 9. Placa adosada al muro
Wall plate | 19. Rejilla
Foot scraper |
| 10. Placa negra anterior al muro
Black plate behind | 20. Alfombrilla de cepillo empotrada
Recessed brush mat |

