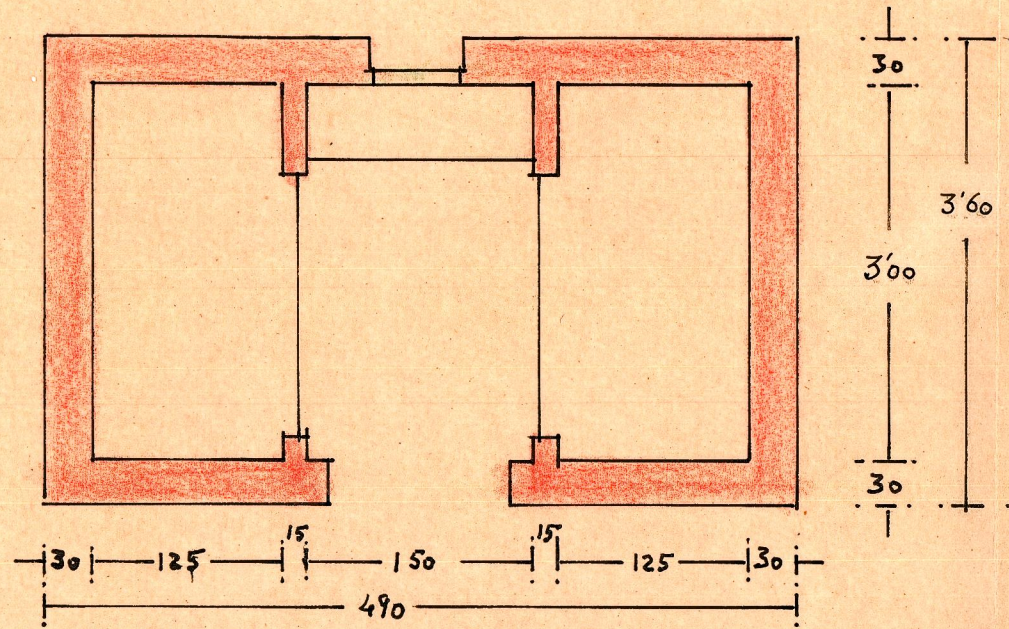
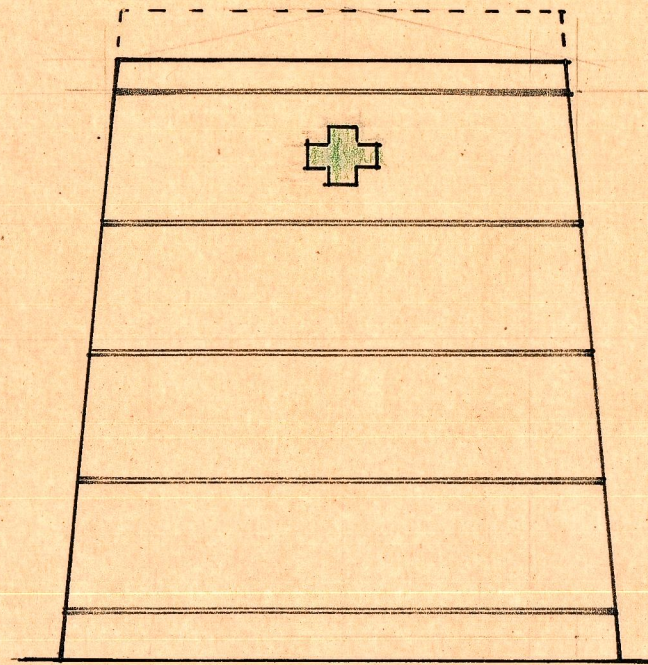


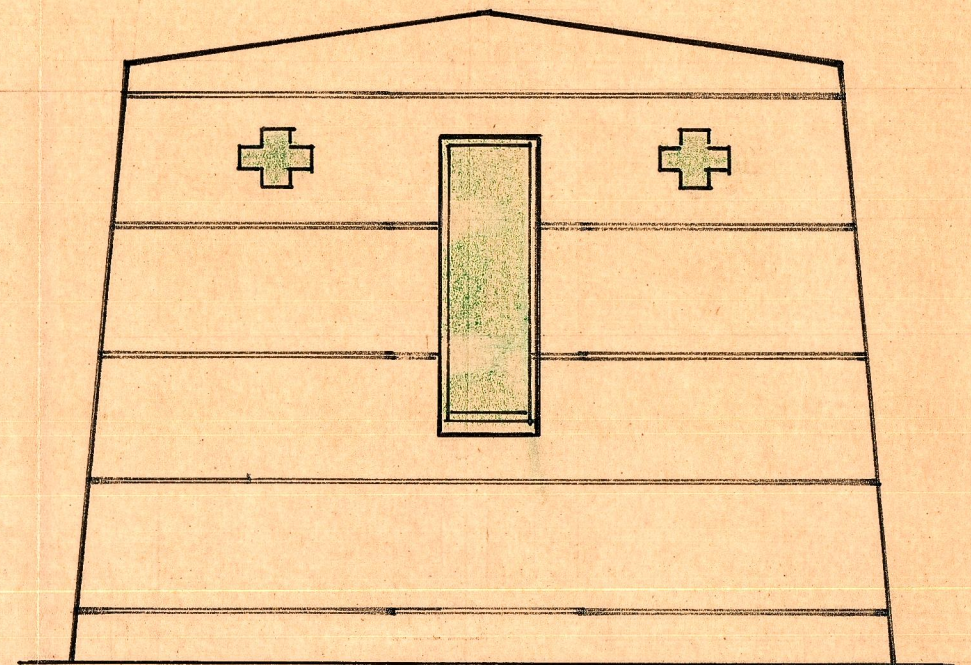
PANTEON EN MISLATA
E-1:50



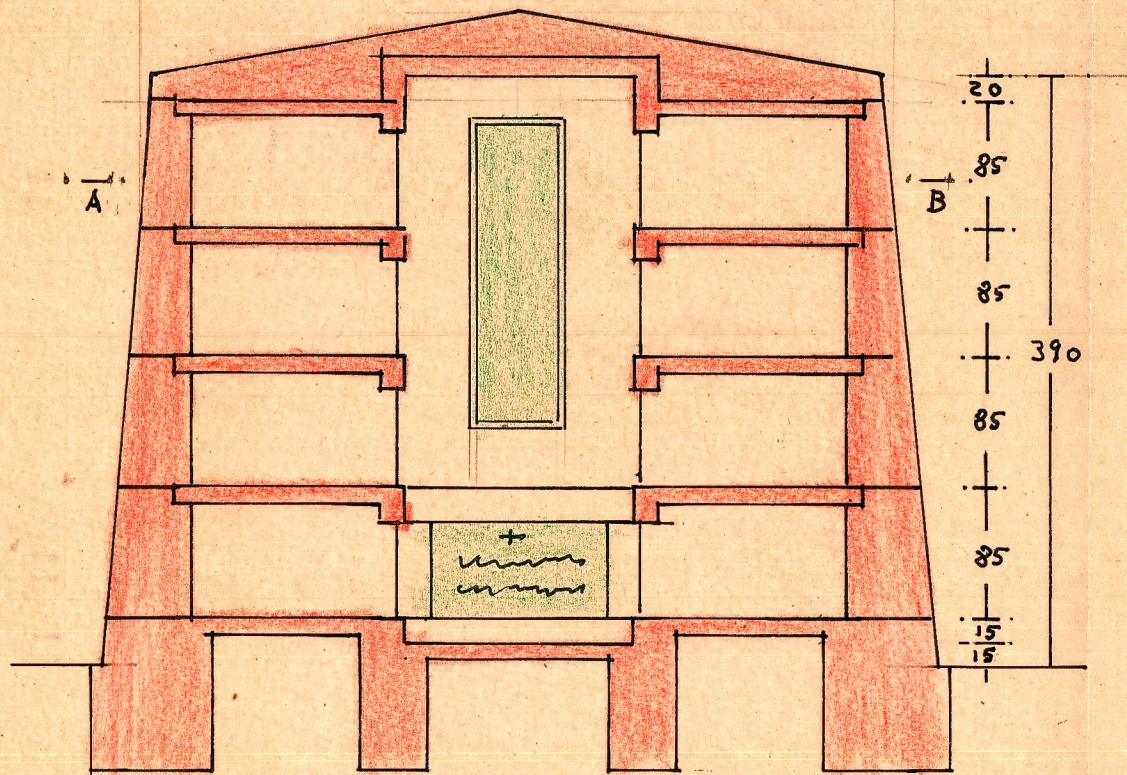
PLANTA
POR A-B



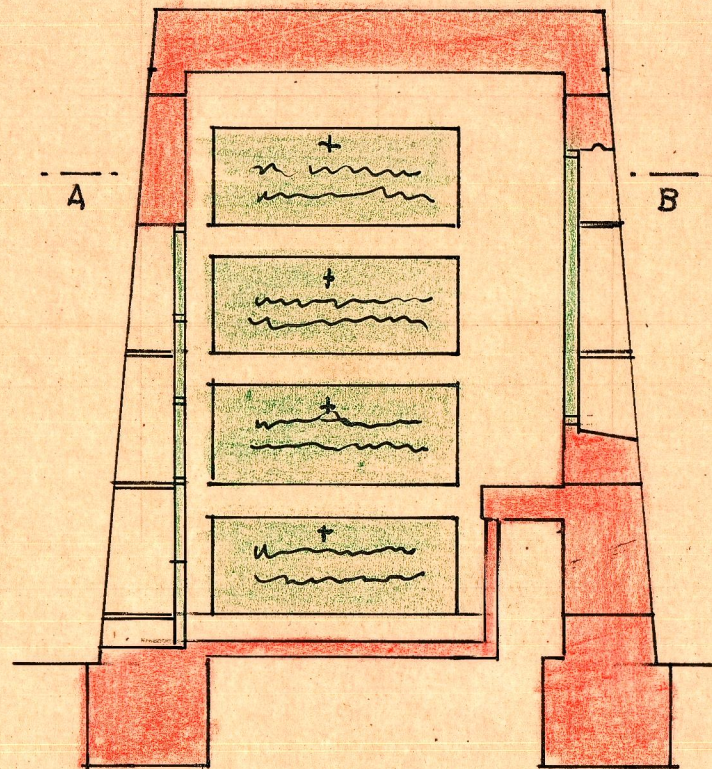
LATERAL



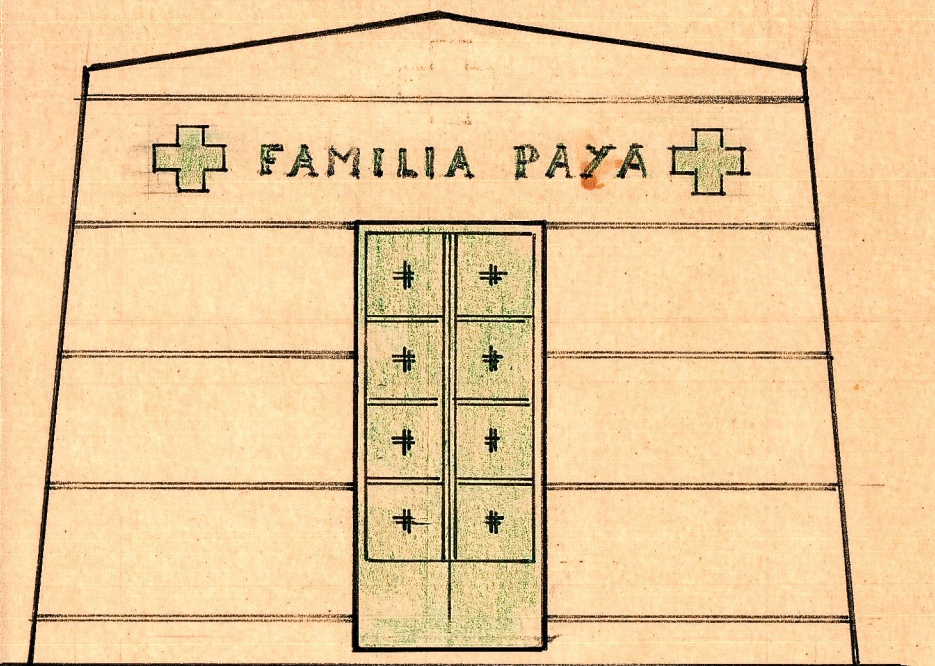
POSTERIOR



SECCION TRANSVERSAL

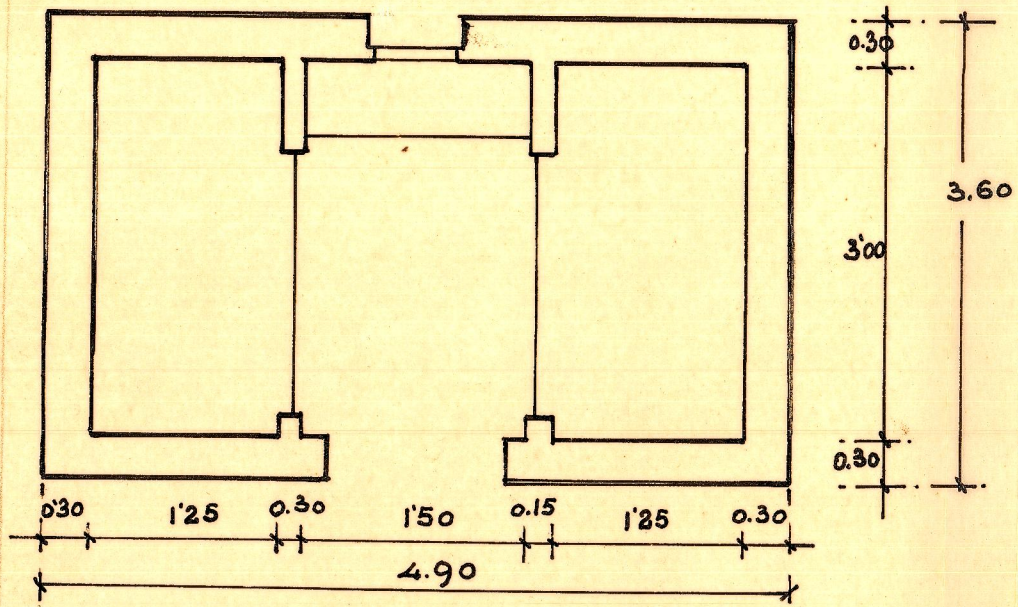


SECCION LONGITUDINAL

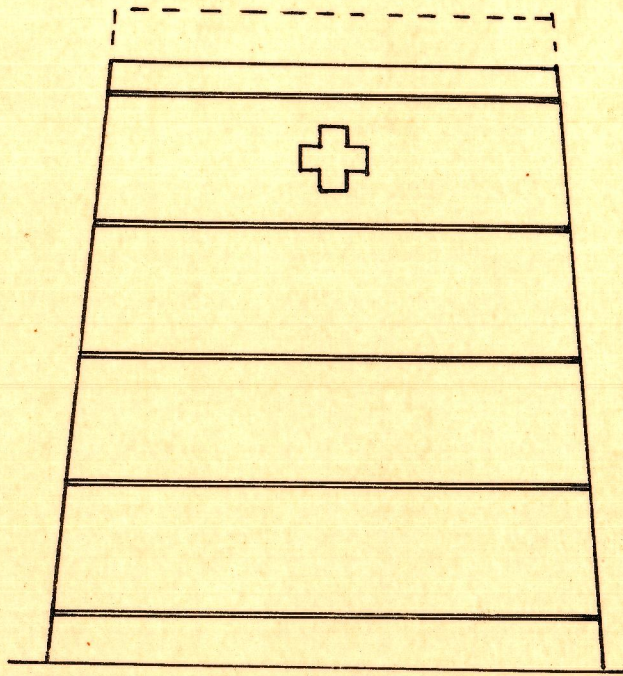


FRENTE

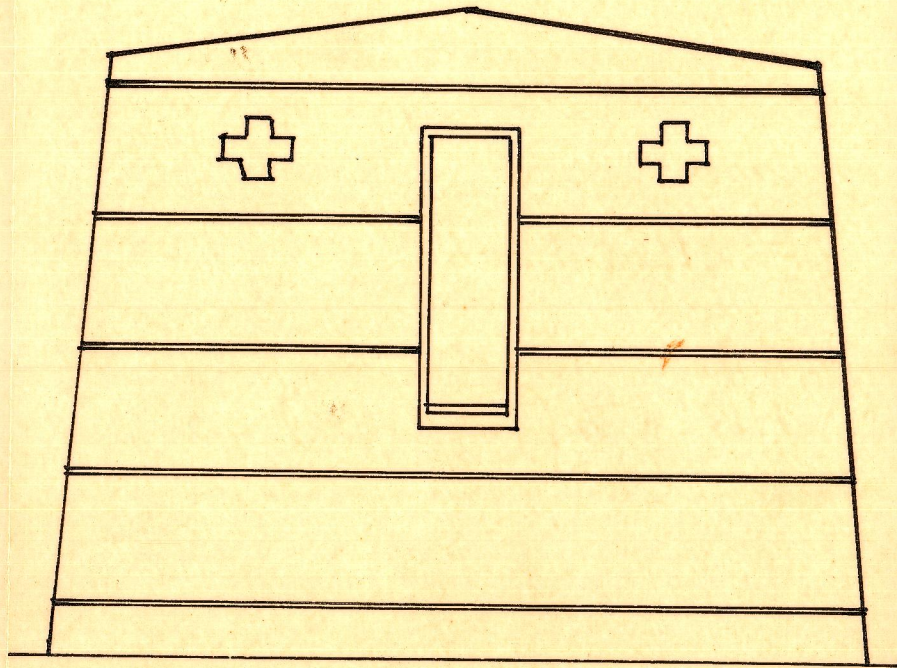
PLANTA POR A B



LATERAL

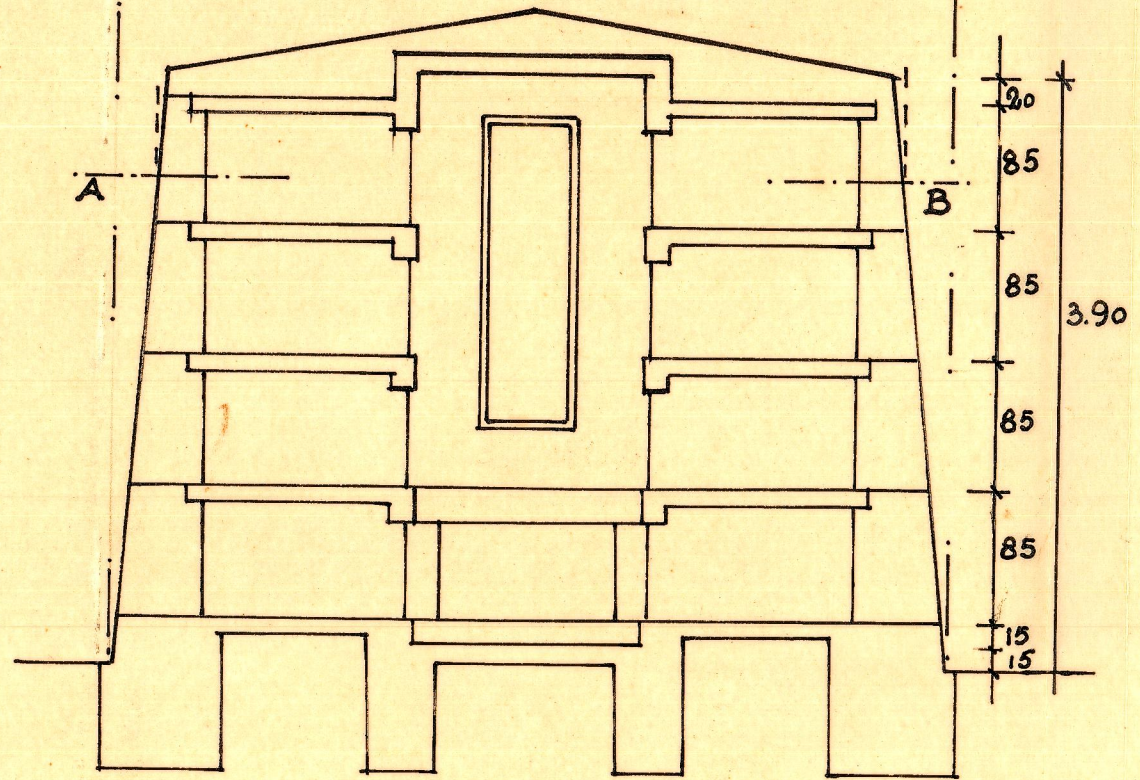


POSTERIOR



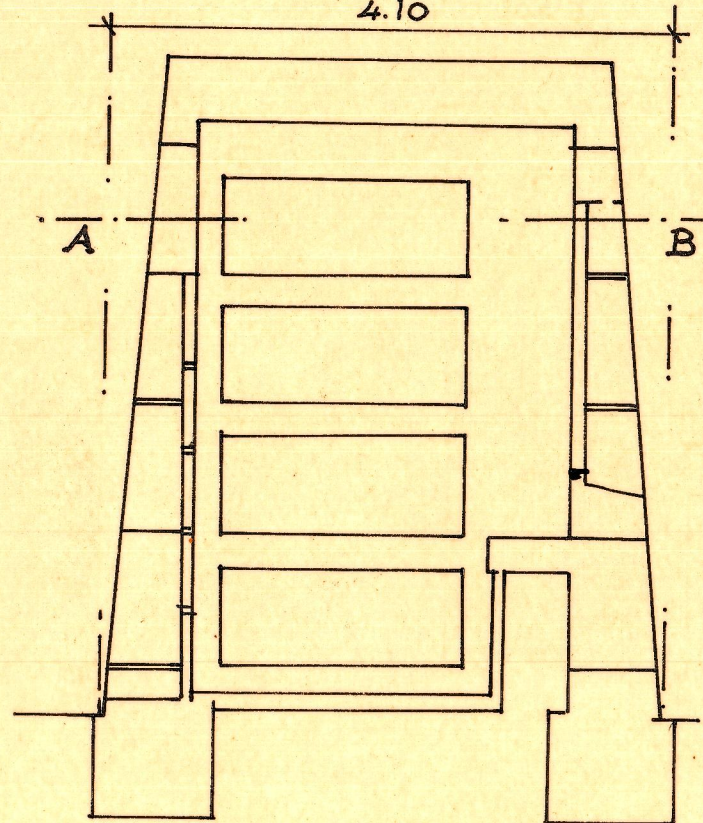
PANTEON
 PARA
 FAMILIA PAYÀ
 EN
 MISLATA (Valencia)

5.50 5'50



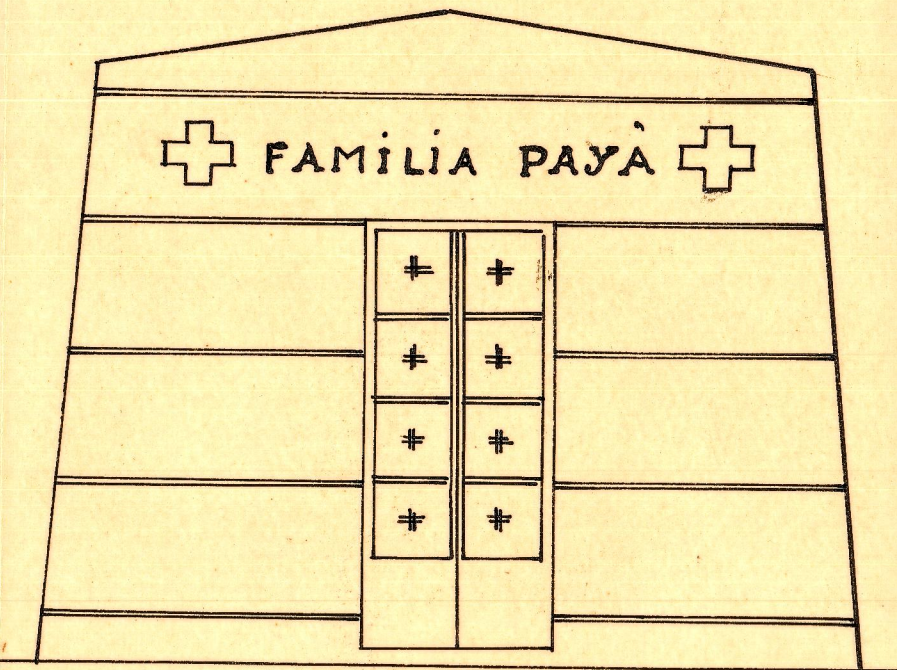
SECCIÓN TRANSVERSAL

4.10



SECC. LONGITUDINAL

FAMILIA PAYÀ



FRENTE

E = 1:50
 Valencia Octubre 1962
 El Arquitecto