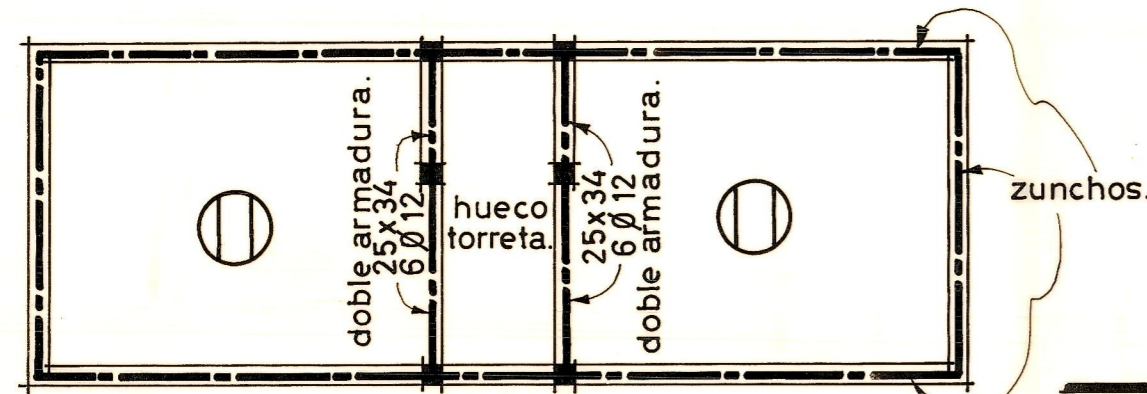
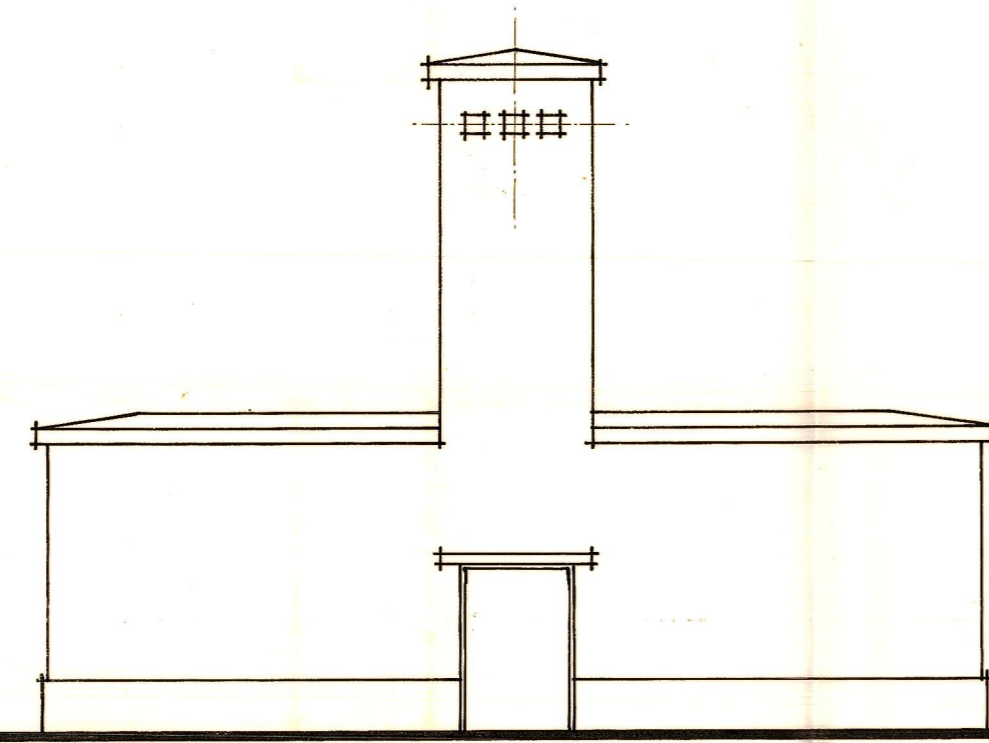


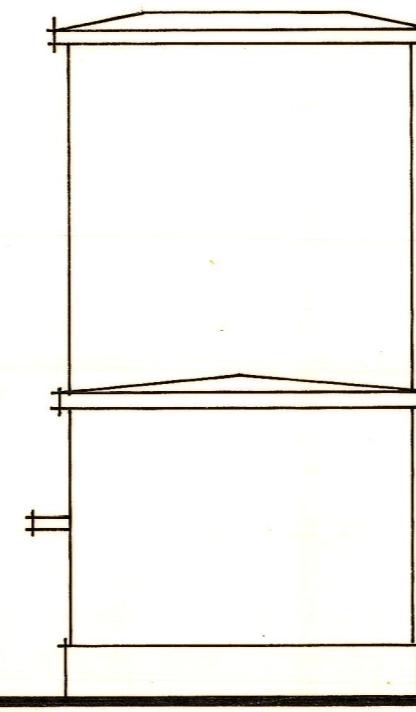
FORJADO
TECHO TORRETA.



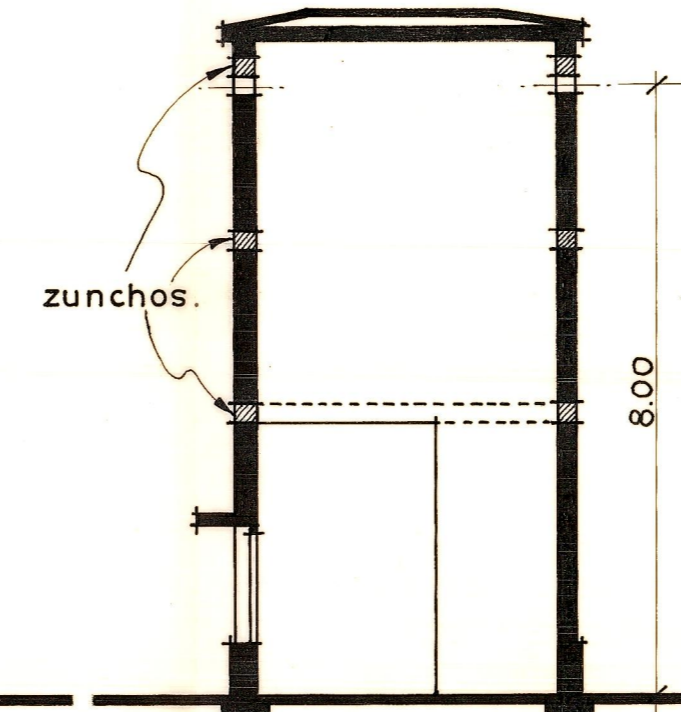
FORJADO
TECHO BAJO.



ALZADO PRINCIPAL.



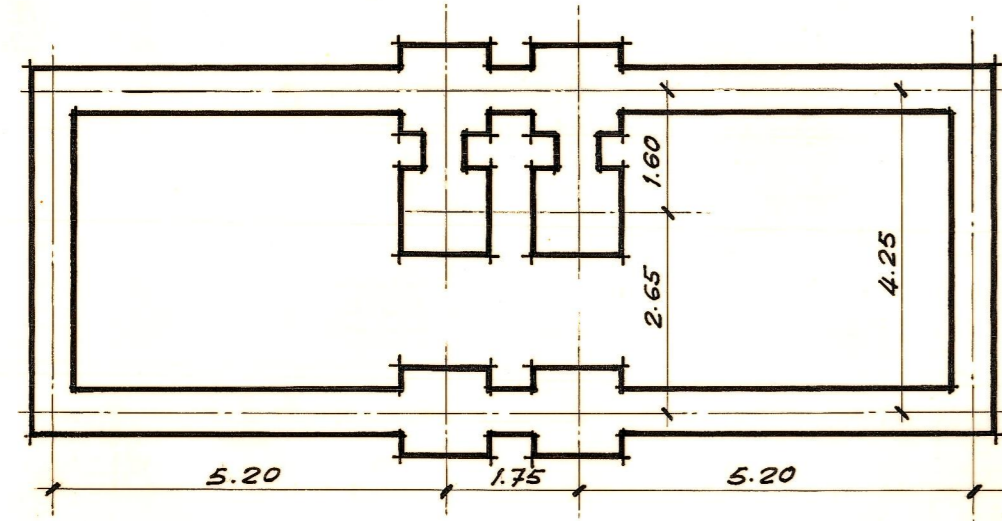
ALZADO LATERAL.



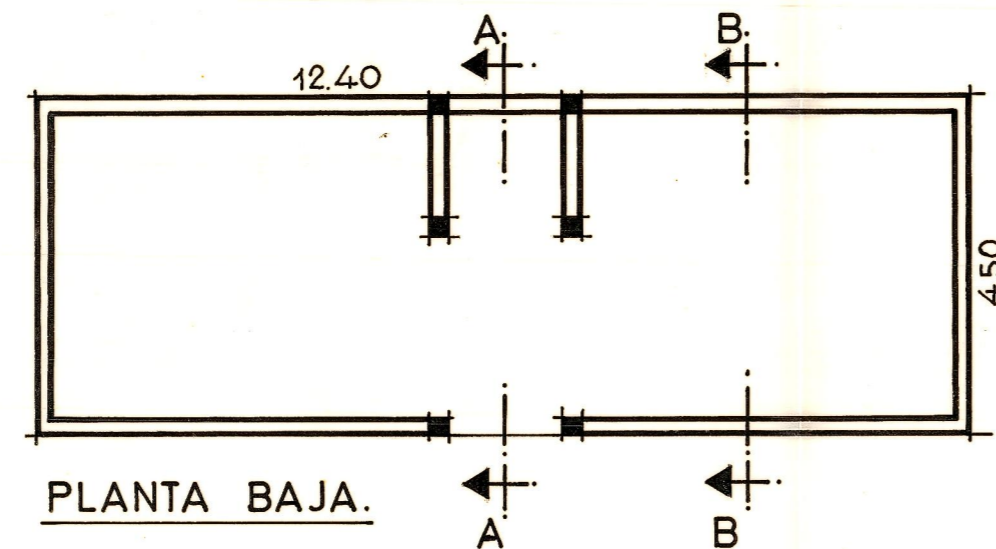
SECCIÓN A-A.



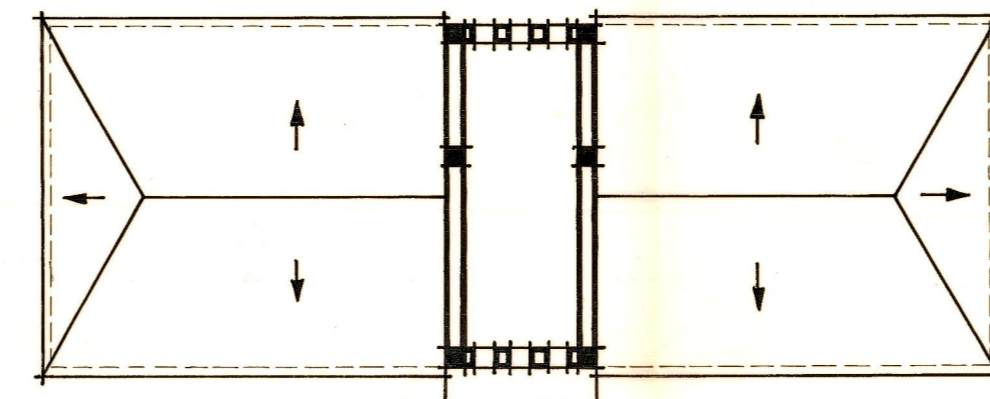
SECCIÓN B-B.



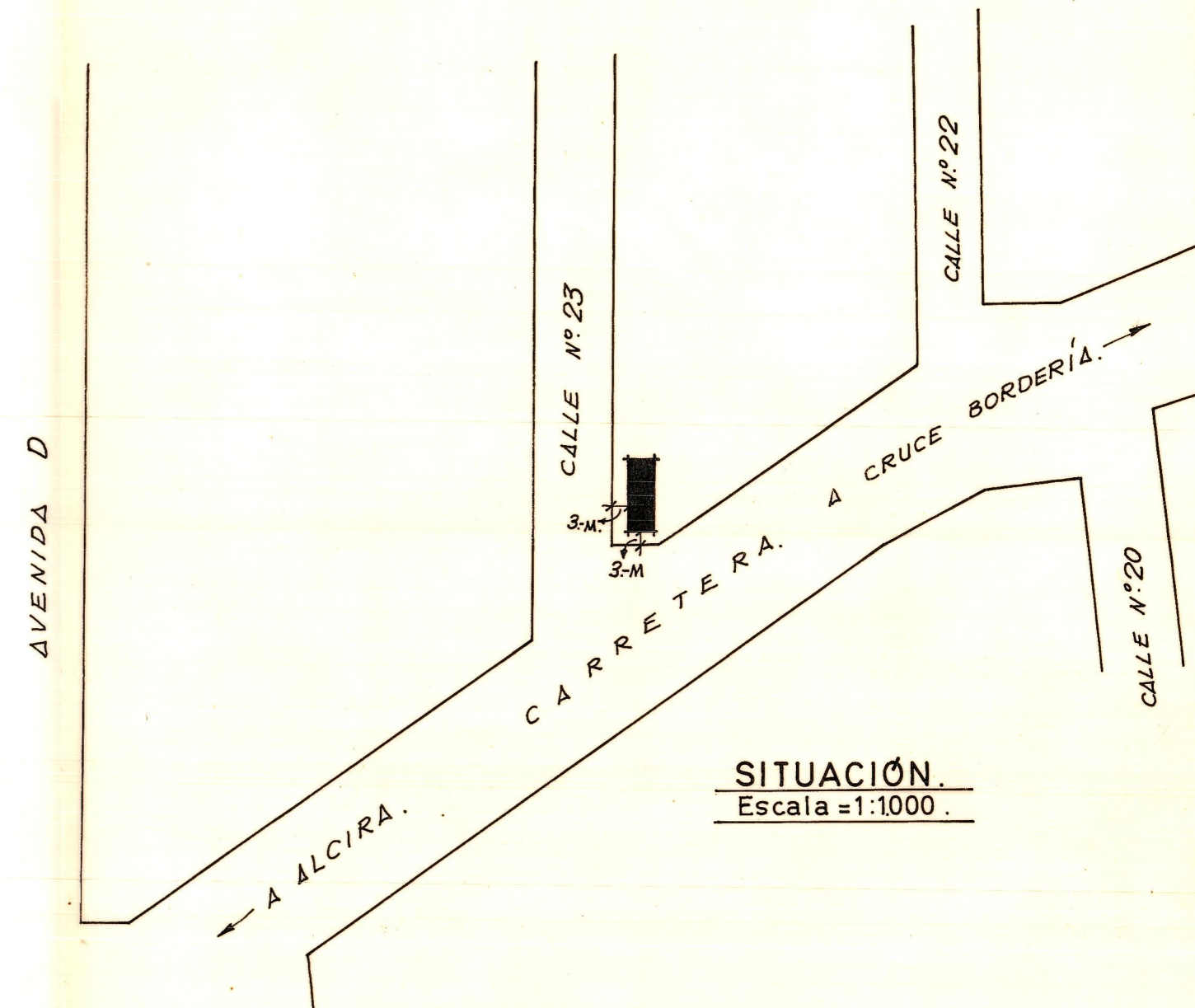
CIMENTOS.



PLANTA BAJA.



PLANTA TORRETA.



SITUACIÓN.
Escala = 1:1000.

Fabrica de D. Federico Giner
ESTACIÓN TRANSFORMADORA.
Tabernes de Valldigna.

Valencia - Septiembre - 1970
El Arquitecto: