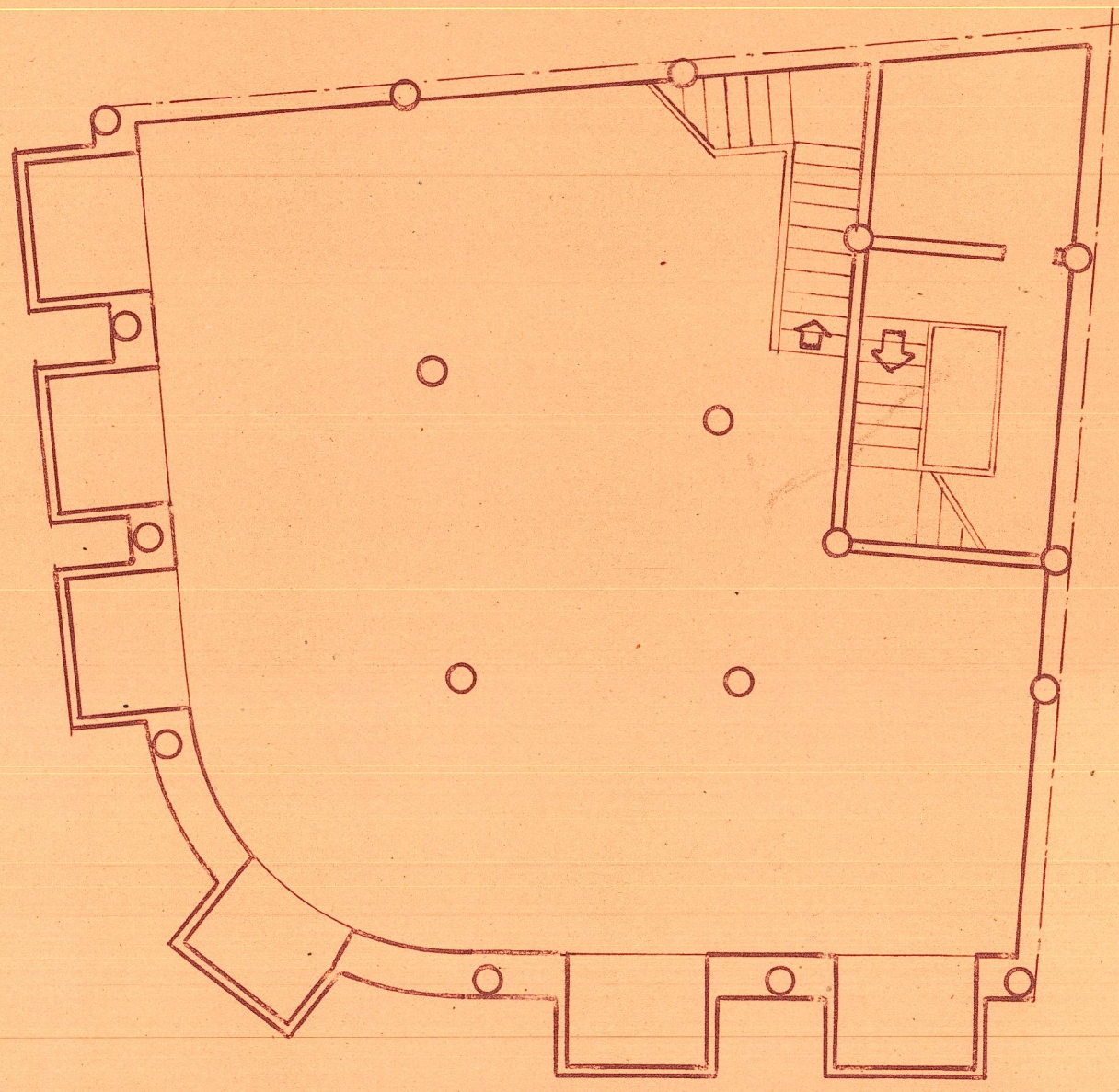
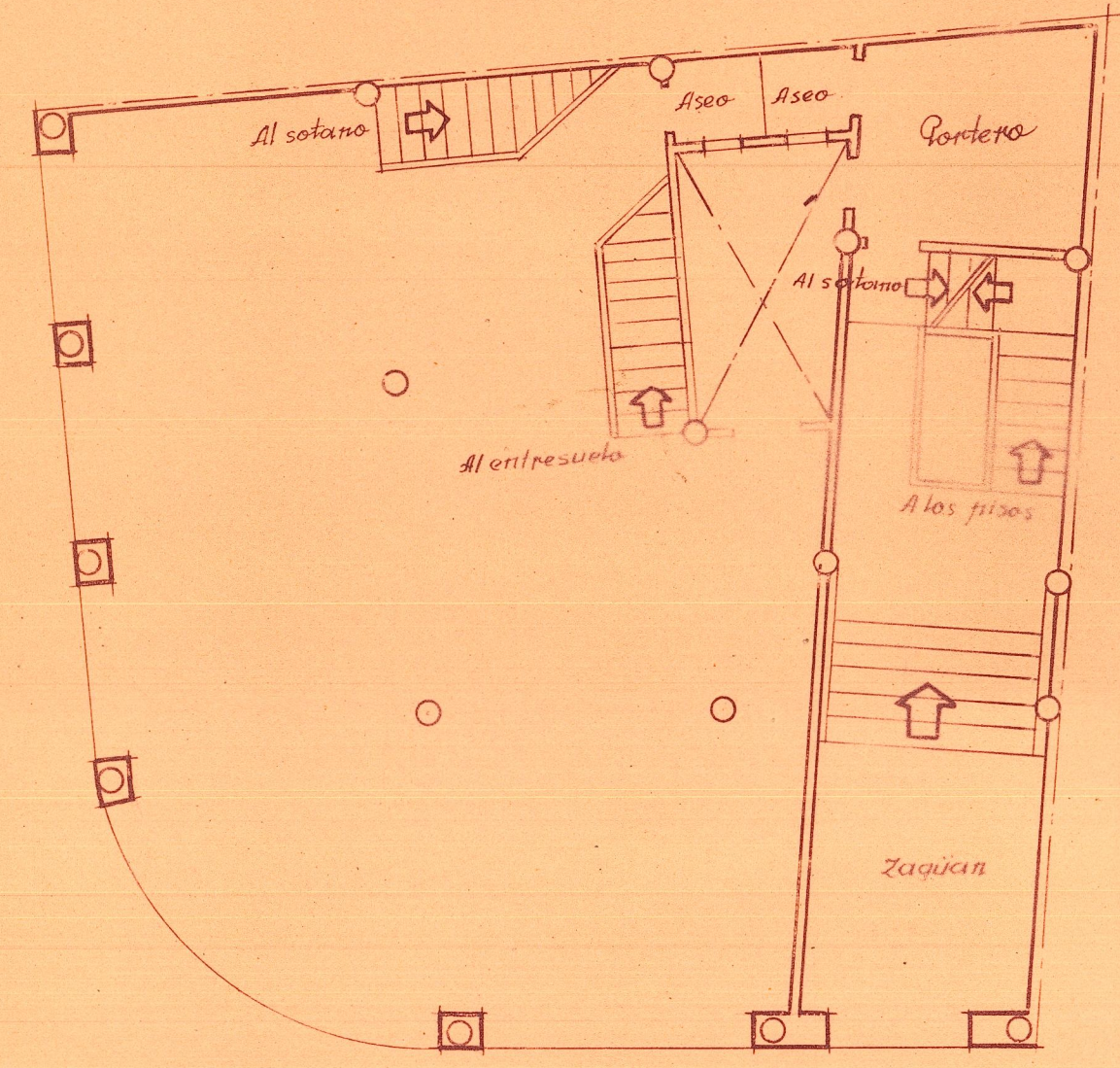


Edificio con fachadas a la G. U. del Oeste y E. de D. Juan de Villarrasa.

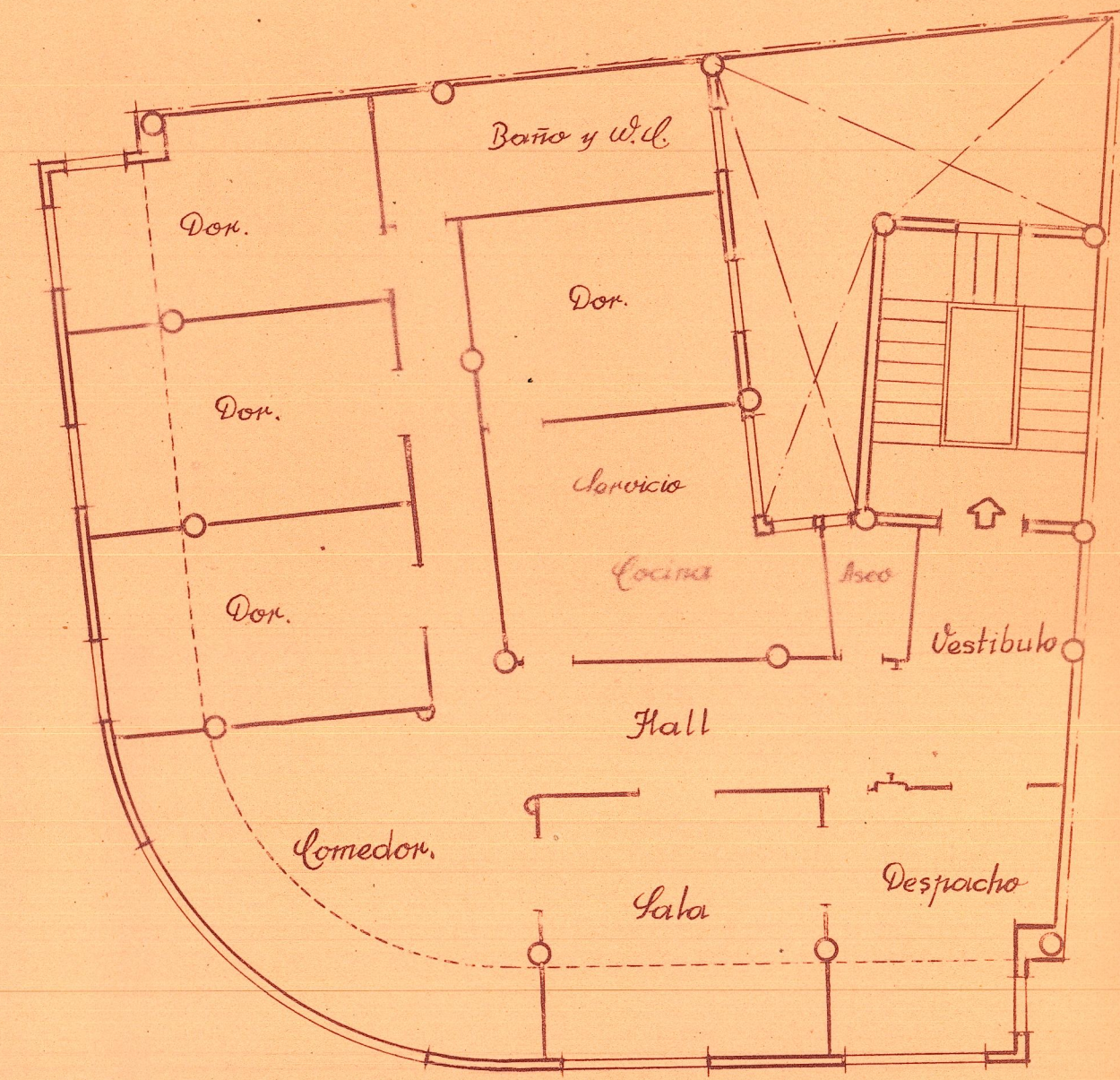


Planta de sótanos

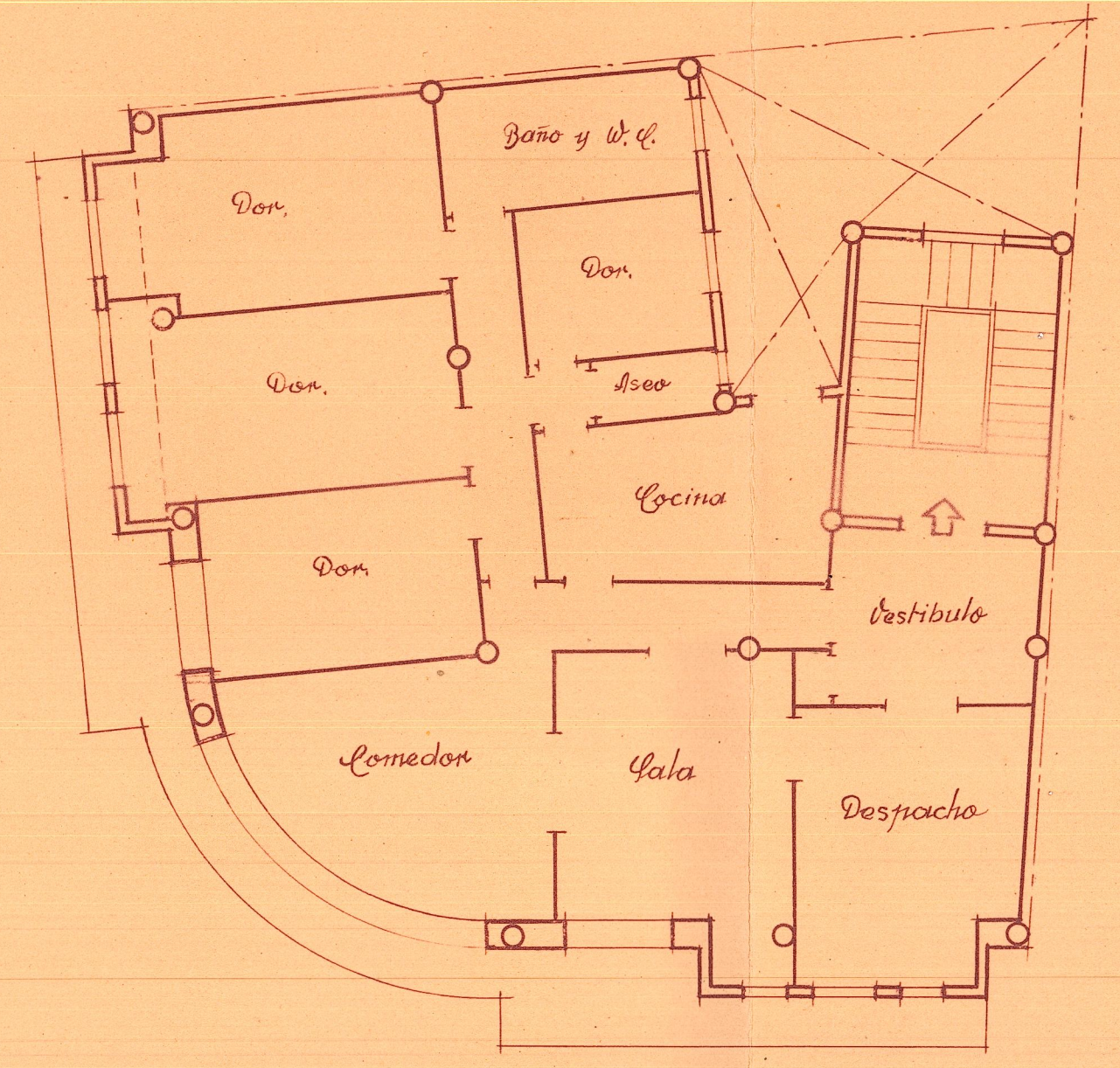
Gran Uca del Oeste



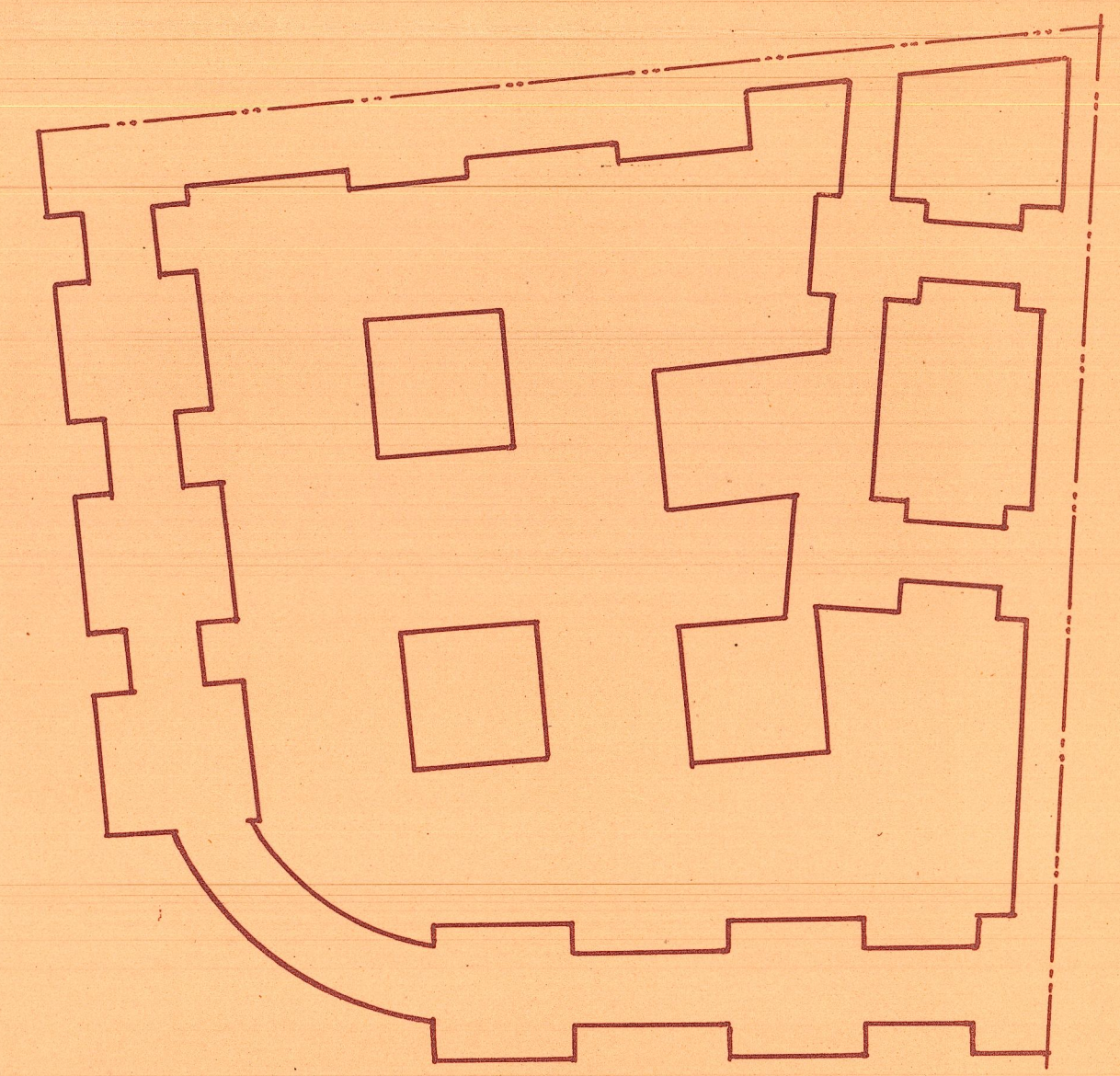
Calle de Don Juan de Villarrasa
Planta baja



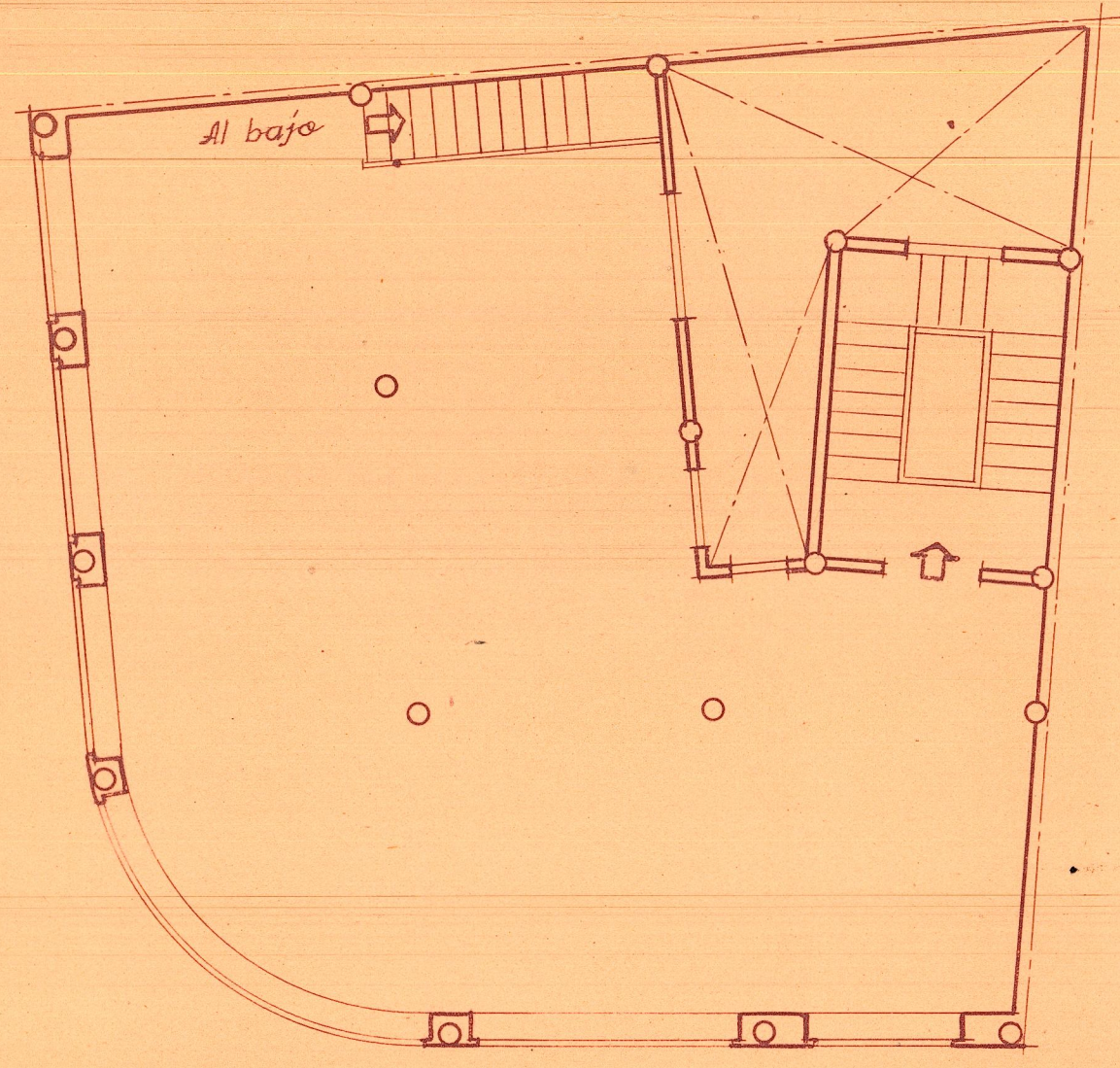
Planta general



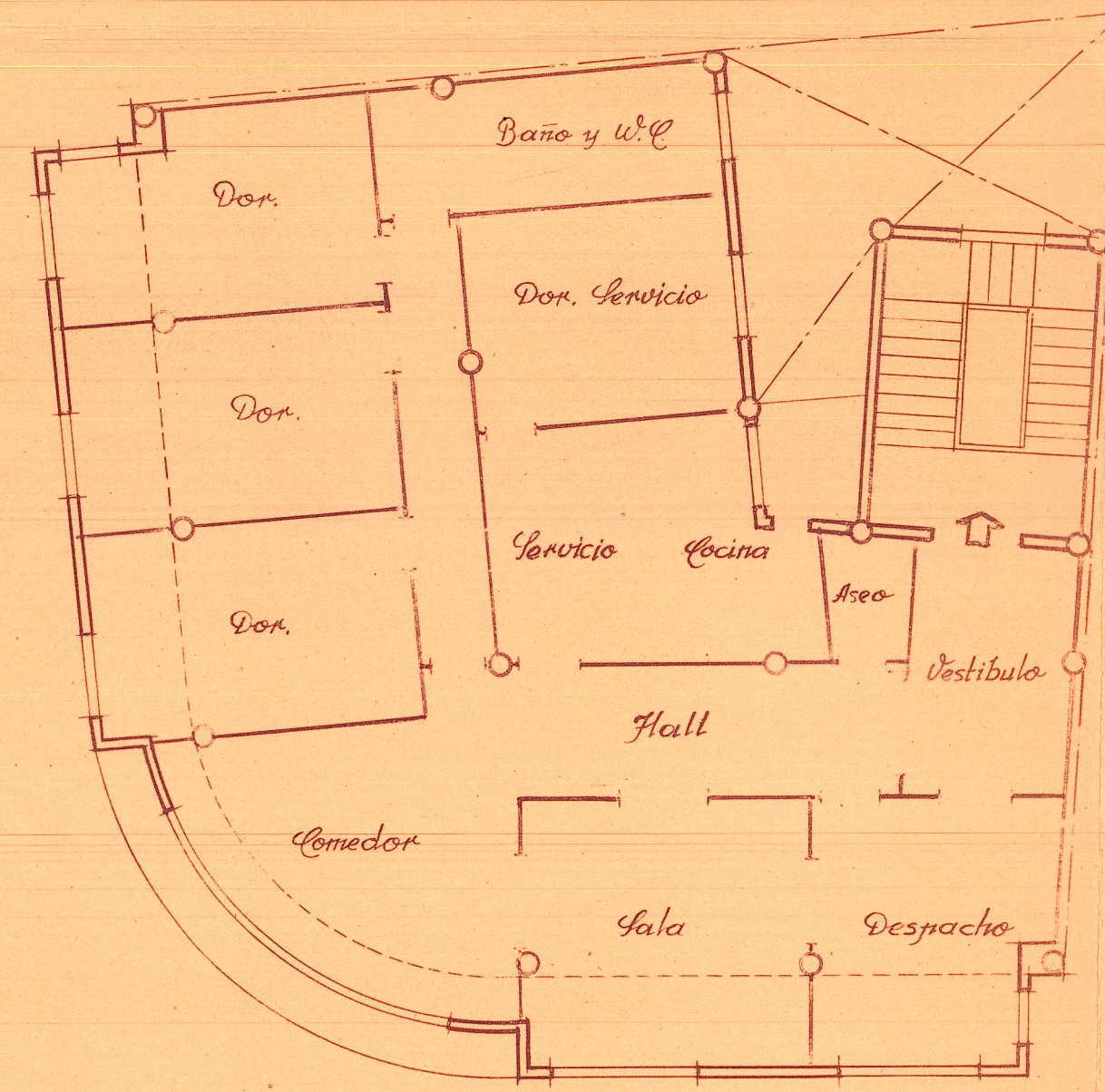
Penultima planta



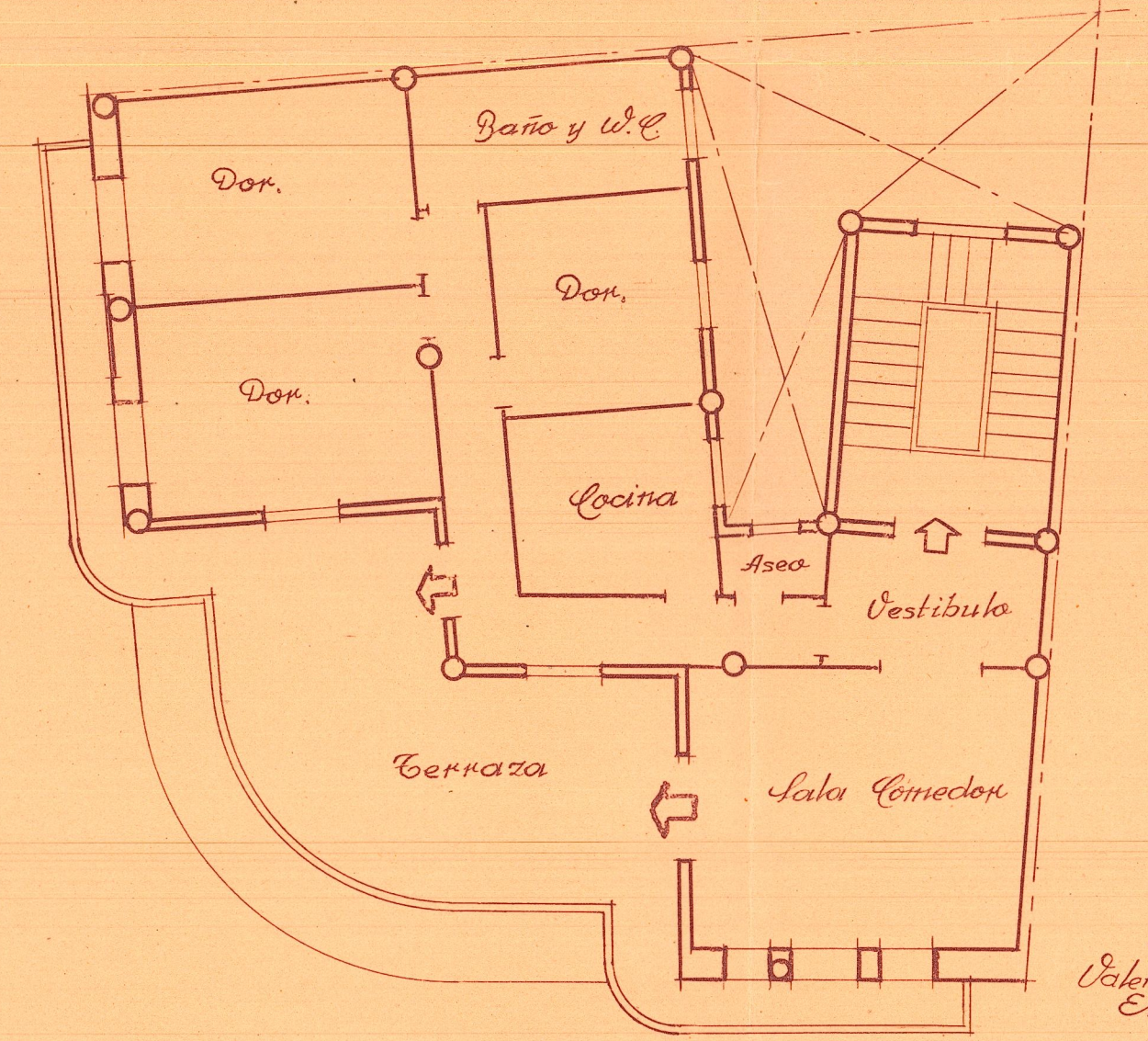
Planta de cimientas



Planta del entresuela



Plantas de transito



Planta de atico

Escala 1:100
Valencia Abril 1943
El Arquitecto.