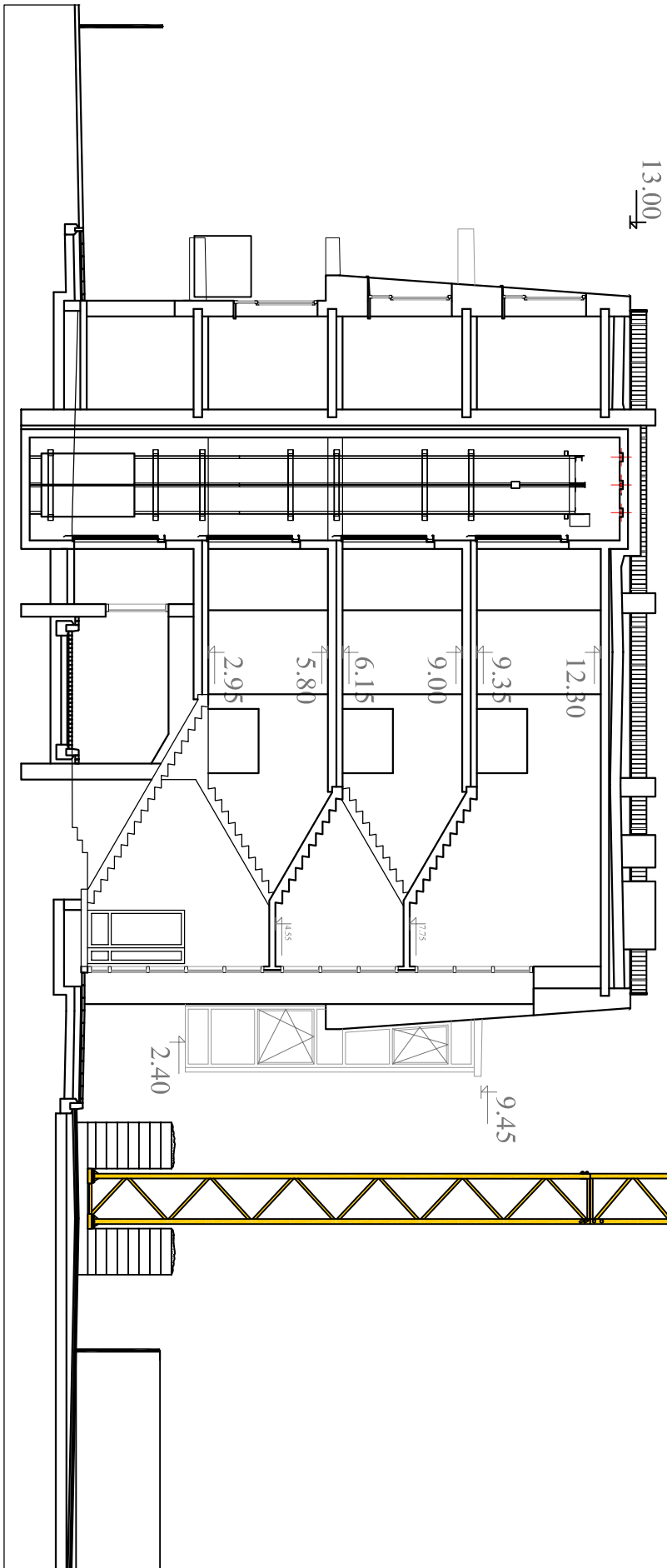
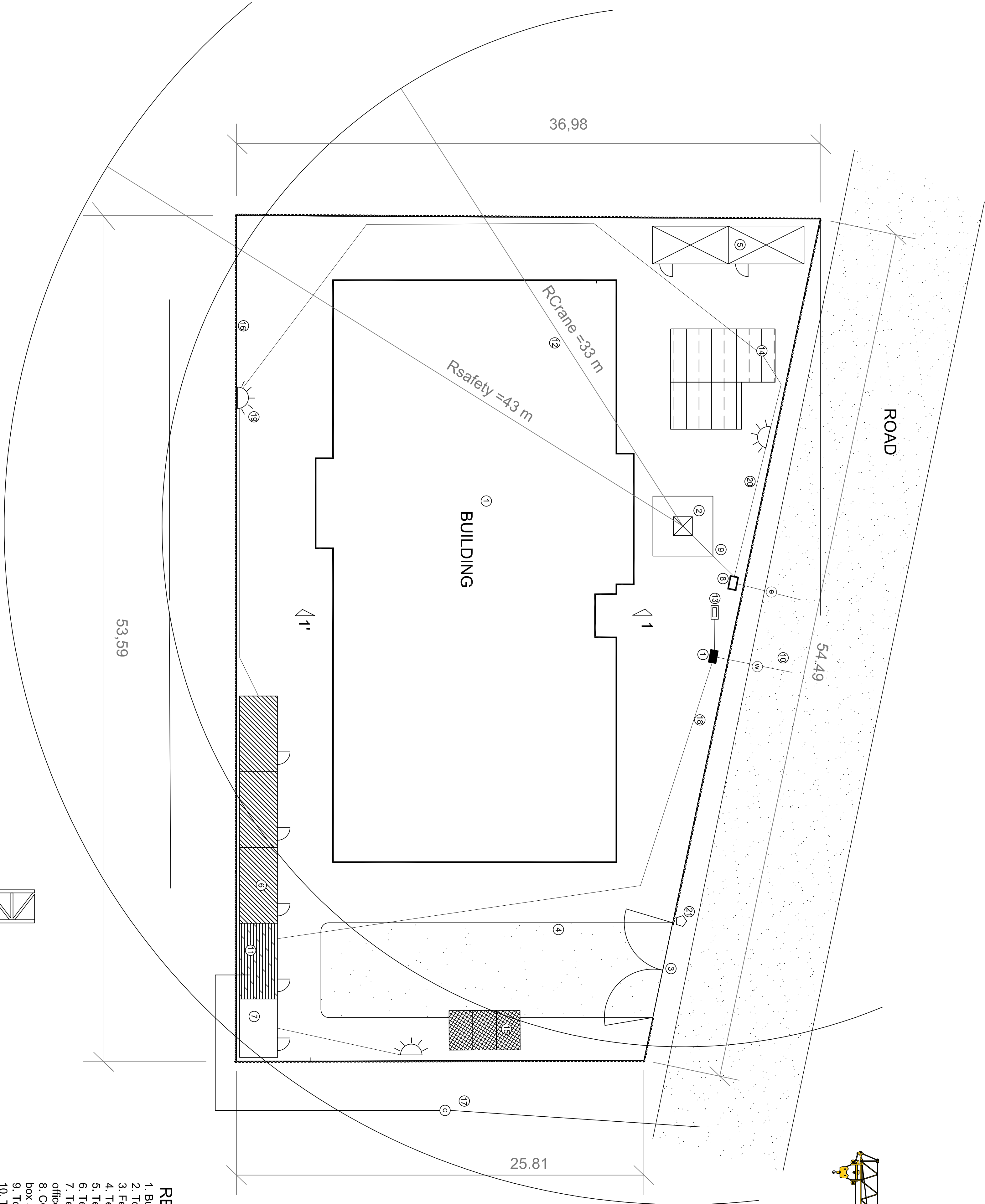
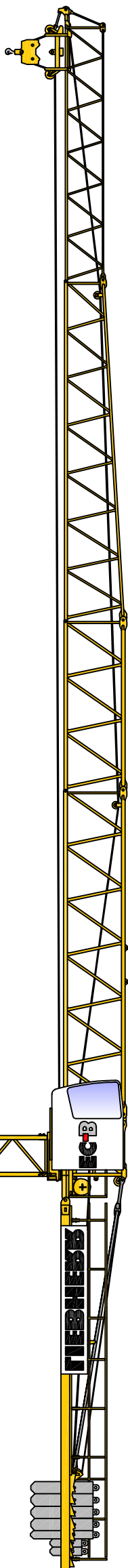


CONSTRUCTION MASTERPLAN

CROSS-SECTION 1-1'

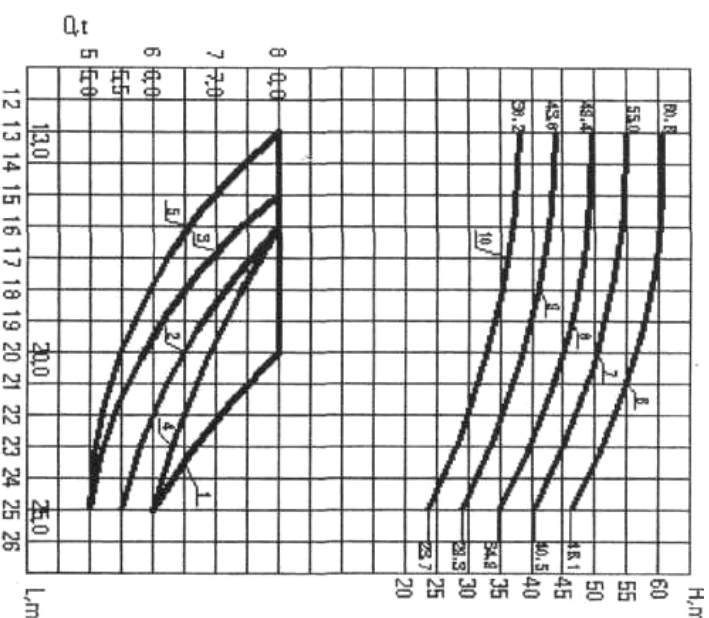
crane 50 EC-B5 LIEBHERR



REFERENCES

- waste and recycling containers
- showers and toilets
- temporary buildings for workers
- temporary buildings and sites
- temporary management office
- fontain with tap
- crain tower site
- lighting
- temporary road
- storage site
- CGP: electicity general protection box and counter of the power company
- temporary water supply and counter for the water supply company
- electricity network
- water network
- canalization
- advertising board

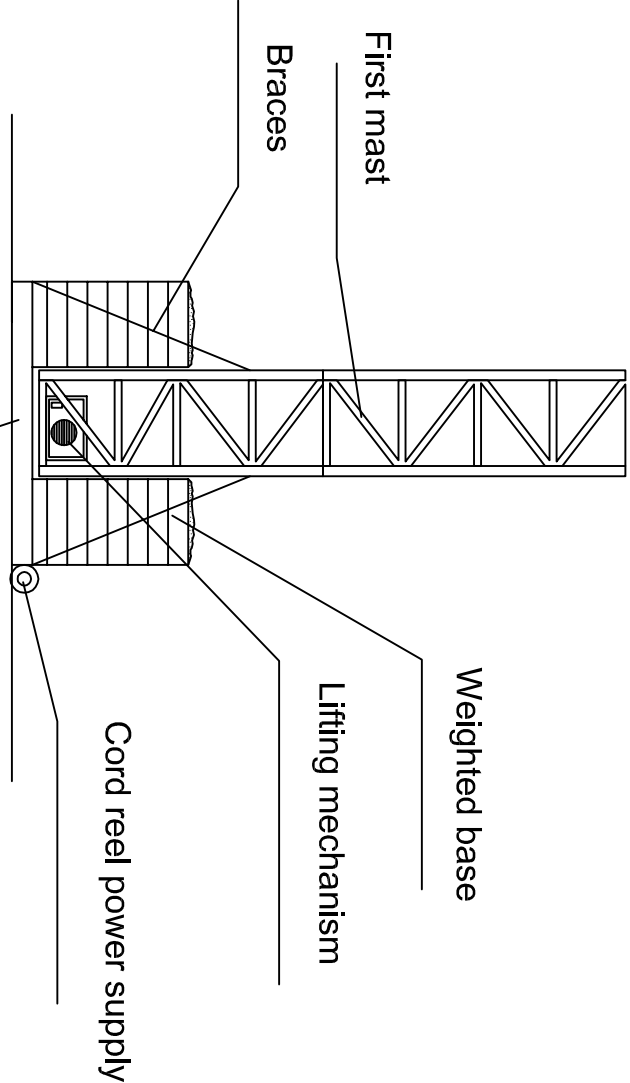
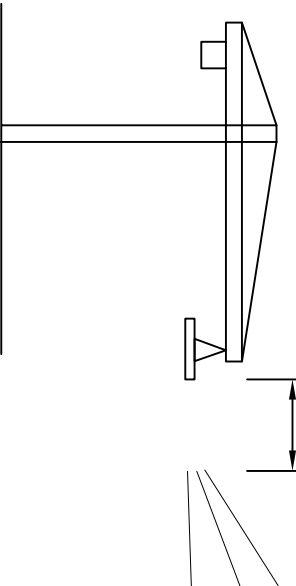
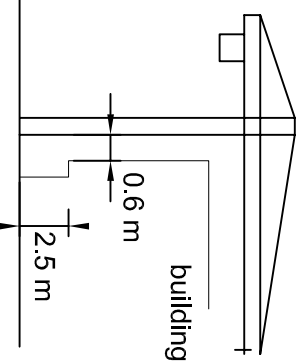
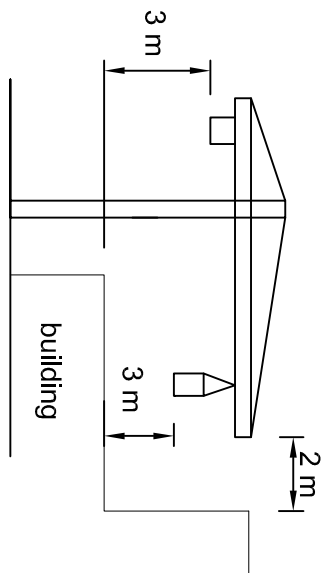
LOAD DIAGRAM



REFERENCES

- Building
- Tower crane 50 EC-B5
- Fences and gate
- Temporary road
- Temporary storage buildings
- Temporary buildings for workers
- Temporary building for management office
- CGP: electicity general protection box and counter of the power company
- Tower crane power supply
- Temporary water supply and counter for the water supply company
- Showers and toilets
- Radio crane arm
- Fountain with tap
- Storage site 35 m2
- Waste and recycling containers
- Perimeter of the site
- Canalization
- Water network
- Illumination
- Electrical network
- Advertising board

SAFETY ZONES



Must be at least 2 meters between the arm crane edge and any construction in horizontal and at least 3 meters between the load object or hook and any construction in vertical.

The loads of the crane cannot cross the street.

The minimum clearance for the passage of persons among the most prominent parts of the crane and any outstade will be 0.6 meters wide and 2.5 meters high.

At no time any part of the crane and its suspended loads, can enter contact with power lines. If these lines are high voltage power should exist between these lines and these items a safe space of 5 m, as minimum, measured in horizontal projection.

NAME AND SURNAME	SIGNATURE	DATE	VILNIUS GEDIMINAS TECHICAL UNIVERSITY	
STUDENT Ignacio Maria Veguer Alfonso				
SUPERVISOR Jonas Saparauskas				
CONSULTANT			Page	Pages
TECH. DE DEPARTMENT				
REVIEWER			CONSTRUCTION MASTERPLAN	
			Department of Technology and Management	