

## ANEXOS

### ANEXO 1: antibiogramas de cepas de *E. coli*.

CEPAS	CÓDIGO	C	CAL	AMC	CTX	CTL	AMP	CIP	CRO	NA	IMP	CAZ	LEV
12E-1	E1	S	S	R	S	S	R	S	S	R	S	S	S
16E-1	E2	S	S	R	S	S	R	S	S	R	S	S	S
16E-1	E3	S	S	R	S	S	R	S	S	R	S	S	S
16E-2	E4	S	S	S	S	S	S	S	S	S	S	S	S
17E-1	E5	S	S	S	S	S	S	S	S	S	S	S	S
17E-3	E6	S	S	R	S	S	R	S	S	R	S	S	S
20E-1	E7	S	S	R	S	S	S	S	S	S	S	S	S
20E-1.2	E8	S	S	R	S	S	R	S	S	S	S	S	S
20E-3	E9	S	S	R	S	S	S	S	S	S	S	S	S
22E-1	E10	S	S	S	S	S	R	S	R	15	21	S	S
22A-1	E11	S	S	14	S	S	S	S	S	R	S	S	S
22-1B	E12	S	S	R	S	S	R	S	S	R	S	S	S
23E-1.1	E13	S	S	R	S	S	16	S	S	R	S	S	S
23E-1.2	E14	S	S	R	S	S	S	S	S	R	S	S	S
23E-1.2	E15	15	S	R	S	S	S	17	S	R	S	S	S
23E-1.3	E16	S	S	R	S	S	S	17	S	R	S	S	S
23E-2	E17	S	S	R	S	S	15	S	S	R	S	S	S
23E-2	E18	S	S	R	S	S	S	S	S	R	S	S	S
23E-2.3	E19	16	S	17	S	S	S	S	S	15	S	S	S
25E-1	E20	S	S	16	S	S	S	S	S	S	S	S	S
25E-2	E21	S	S	R	S	S	R	R	S	R	S	S	16
26E-1.1	E22	S	S	R	S	S	R	S	S	R	S	S	S
26E-1.2	E23	S	S	R	S	S	R	R	20	R	S	S	15
26E-2.1	E24	S	S	R	S	S	R	R	S	R	S	S	15
26E-2.2	E25	S	S	S	S	S	S	S	S	S	S	S	S
26E-3.1	E26	S	S	S	S	S	S	S	S	S	S	S	S
26E-3.2	E27	S	S	15	S	S	S	S	R	14	S	S	S
27E1	E28	15	S	R	S	S	S	S	S	S	S	S	S
27E-1	E29	S	S	R	S	S	S	R	S	15	S	S	S

**ANEXO 2:** antibiogramas procedentes de medios XLD y CS.

CEPAS	CÓDIGO	C	CAL	AMC	CTX	CTL	AMP	CIP	CRO	NA	IMP	CAZ	LEV
10TS 1	S1	S	27	S	S	S	S	S	S	R	S	S	S
10TS 2	S2	S	S	S	S	S	S	20	S	R	S	S	S
10RS	S3	R	S	R	S	S	R	S	S	S	S	S	S
11TS	S4	R	27	R	S	S	R	S	S	S	S	S	S
17RS	S5	R	S	R	S	S	R	S	S	S	S	S	S
18TS	S6	S	26	R	S	S	R	S	S	S	S	S	S
24TS	S7	S	S	R	S	S	20	S	S	S	S	S	S
26RX	S8	S	S	R	S	S	R	S	S	S	S	S	S
27TX	S9	S	S	S	S	S	S	S	S	S	S	S	S

**ANEXO 3:** antibiogramas procedentes de medios MacConkey suplementados con antibióticos.

CEPAS	CÓDIGO	C	CAL	AMC	CTX	CTL	AMP	CIP	CRO	NA	IMP	CAZ	LEV
9MC2	M1	R	S	R	R	S	15	S	20	S	S	S	S
13MC	M2	13	S	15	23	R	S	S	R	S	S	S	S
18MC	M3	S	S	R	R	R	R	S	R	S	S	S	S
21MM	M4	S	S	R	S	S	S	S	S	S	S	S	S
21MC	M5	R	S	R	R	S	14	S	R	S	S	S	S
22MC	M6	R	R	S	R	S	R	S	R	S	S	R	S
25MC1	M7	R	R	R	R	S	S	S	20	S	S	20	S
25MC2	M8	14	S	R	R	S	16	S	S	S	S	S	S
25MC1	M9	R	R	R	23	R	14	S	R	R	S	R	S
29MC1	M10	15	R	15	R	S	16	S	R	S	S	R	S
29MC2	M11	R	S	R	R	S	R	R	R	S	S	S	16

**ANEXO 4:** imágenes del estudio

Figura 1: medios preparados.

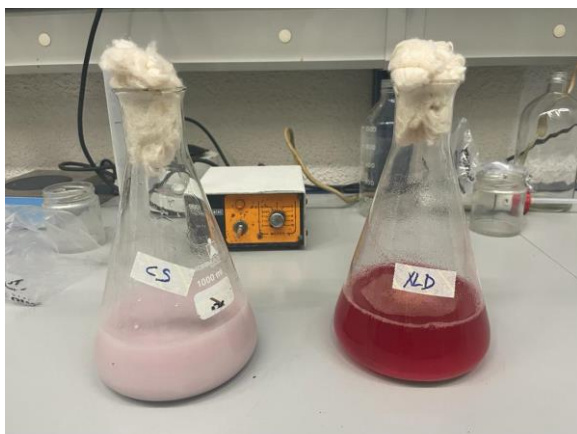


Figura 2: muestras dentro de bolsas Stomacher.



Figura 3: recuento de coliformes y *E. coli*

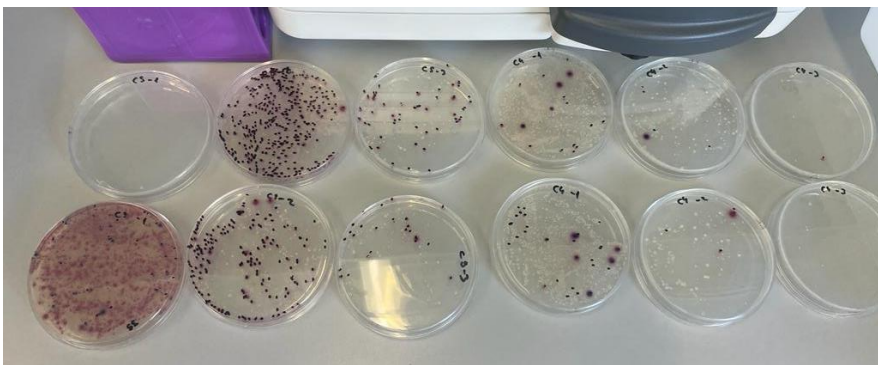


Figura 5: Tira API 20.



Figura 6: antibiograma realizado.

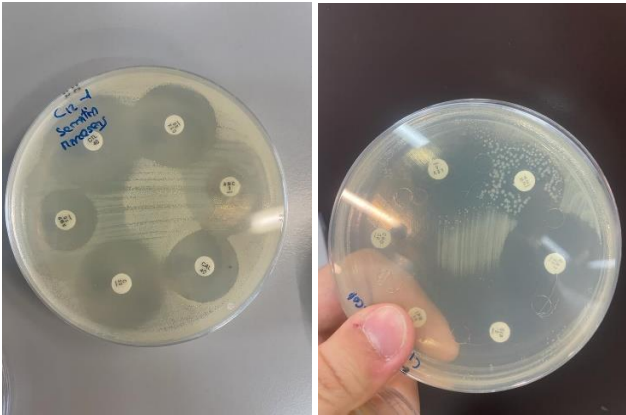


Figura 7: resultado positivo del test de aglutinación.

