



Quantifying methane emissions from the global scale down to point sources using satellite observations of atmospheric methane

Daniel J. Jacob¹, Daniel J. Varon^{1,2}, Daniel H. Cusworth^{3,4}, Philip E. Dennison⁵,
Christian Frankenberg^{6,7}, Ritesh Gautam⁸, Luis Guanter^{9,10}, John Kelley¹¹, Jason McKeever²,
Lesley E. Ott¹², Benjamin Poulter¹², Zhen Qu¹, Andrew K. Thorpe⁷, John R. Worden⁷, and
Riley M. Duren^{3,4,7}

¹School of Engineering and Applied Sciences, Harvard University, Cambridge, 02138, USA

²GHGSat, Inc., Montreal, H2W 1Y5, Canada

³Arizona Institutes for Resilience, University of Arizona, Tucson, 85721, USA

⁴Carbon Mapper, Pasadena, 91109, USA

⁵Department of Geography, University of Utah, Salt Lake City, 84112, USA

⁶Division of Geological and Planetary Sciences, California Institute of Technology, Pasadena, 91125, USA

⁷Jet Propulsion Laboratory, California Institute of Technology, Pasadena, 91109, USA

⁸Environmental Defense Fund, Washington, D.C., 20009, USA

⁹Research Institute of Water and Environmental Engineering,
Universitat Politècnica de Valencia, Valencia, 46022, Spain

¹⁰Environmental Defense Fund, Amsterdam, 1017, The Netherlands

¹¹GeoSapien, Inc., Cypress, 77429, USA

¹²NASA GSFC, Greenbelt, 20771, USA

Correspondence: Daniel J. Jacob (djacob@fas.harvard.edu)

Received: 1 April 2022 – Discussion started: 11 April 2022

Revised: 18 June 2022 – Accepted: 22 June 2022 – Published: 29 July 2022

Abstract. We review the capability of current and scheduled satellite observations of atmospheric methane in the shortwave infrared (SWIR) to quantify methane emissions from the global scale down to point sources. We cover retrieval methods, precision and accuracy requirements, inverse and mass balance methods for inferring emissions, source detection thresholds, and observing system completeness. We classify satellite instruments as area flux mappers and point source imagers, with complementary attributes. Area flux mappers are high-precision (< 1%) instruments with 0.1–10 km pixel size designed to quantify total methane emissions on regional to global scales. Point source imagers are fine-pixel (< 60 m) instruments designed to quantify individual point sources by imaging of the plumes. Current area flux mappers include GOSAT (2009–present), which provides a high-quality record for interpretation of long-term methane trends, and TROPOMI (2018–present), which provides global continuous daily mapping to quantify emissions on regional scales. These instruments already provide a powerful resource to quantify national methane emissions in support of the Paris Agreement. Current point source imagers include the GHGSat constellation and several hyperspectral and multispectral land imaging sensors (PRISMA, Sentinel-2, Landsat-8/9, WorldView-3), with detection thresholds in the 100–10 000 kg h⁻¹ range that enable monitoring of large point sources. Future area flux mappers, including MethaneSAT, GOSAT-GW, Sentinel-5, GeoCarb, and CO2M, will increase the capability to quantify emissions at high resolution, and the MERLIN lidar will improve observation of the Arctic. The averaging times required by area flux mappers to quantify regional emissions depend on pixel size, retrieval precision, observation density, fraction of successful retrievals, and return times in a way that varies with the spatial resolution desired. A similar interplay applies to point source imagers between detection threshold, spatial coverage, and return time, defining an observing

system completeness. Expanding constellations of point source imagers including GHGSat and Carbon Mapper over the coming years will greatly improve observing system completeness for point sources through dense spatial coverage and frequent return times.

1 Introduction

Methane is a powerful greenhouse gas that has contributed 0.6 °C of global warming since pre-industrial times (Naik et al., 2021). It is emitted by a number of anthropogenic source sectors, including livestock, oil and gas systems, coal mining, landfills, wastewater treatment, and rice cultivation. Wetlands are the main natural source. The main sink is oxidation by the hydroxyl radical (OH), resulting in an atmospheric lifetime of about 9 years (Prather et al., 2012). Because of this short lifetime, decreasing methane emissions is a powerful lever to slow down near-term greenhouse warming (Nisbet et al., 2020). However, methane emission estimates and the contributions from different sectors are highly uncertain (Saunio et al., 2020), hindering climate policy. Here we review the capability of satellite observations of atmospheric methane to quantify emissions from the global scale down to point sources.

Methane emission inventories are typically constructed using bottom-up methods in which activity levels (such as number of cows) are multiplied by emission factors (methane emitted per cow; IPCC, 2019). Bottom-up methods relate emissions to the underlying processes, thus providing a basis for emission control strategies. Observations of atmospheric methane provide top-down information to improve these emission estimates by using inverse methods to relate observed concentrations to emissions (Miller and Michalak, 2017). Satellite observations are of particular interest for this purpose because of their high observation density and global coverage (Palmer et al., 2021).

Satellites retrieve atmospheric methane column concentrations with near-unit sensitivity down to the surface by measuring spectrally resolved backscattered solar radiation in the shortwave infrared (SWIR; Jacob et al., 2016). Global observation of methane from space began with the SCIAMACHY instrument (2003–2014, $30 \times 60 \text{ km}^2$ pixels) (Frankenberg et al., 2005) and has continued since with the TANSO-FTS instrument aboard GOSAT (2009–present, 10 km circular pixels separated by about 270 km; Parker et al., 2020) and the TROPOMI instrument (2018–present, $5.5 \times 7 \text{ km}^2$ pixels; Lorente et al., 2021a). Many studies have used these satellite observations to quantify methane emissions globally (Bergamaschi et al., 2013; Alexe et al., 2015; Wang et al., 2019; Qu et al., 2021), on continental scales (Wecht et al., 2014; Maasakkers et al., 2021; Lu et al., 2022), on finer regional scales (Miller et al., 2019; Zhang et al., 2020; Shen et al., 2021), and for large point sources (Pandey et al., 2019; Sadavarte et al., 2021; Lauvaux et al., 2022; Maasakkers et

al., 2022a, b). Targeted observation of methane point sources from space began with the 2015 Aliso Canyon blowout using the Hyperion hyperspectral sensor (Thompson et al., 2016) and has since continued with the GHGSat instruments (2016–present, $25 \times 25 \text{ m}^2$ pixels; Jervis et al., 2021). Hyperspectral land-imaging spectrometers (measuring continuous spectra with $\sim 10 \text{ nm}$ resolution in selected wavelength channels) and multispectral land-imaging spectrometers (measuring radiances in discrete $\sim 100 \text{ nm}$ channels) have also demonstrated capability to detect large methane point sources in their SWIR bands (Cusworth et al., 2019; Guanter et al., 2021; Varon et al., 2021; Ehret et al., 2022; Sanchez-Garcia et al., 2022).

Better quantification of methane emissions worldwide is urgently needed to meet the demands of climate policy. Individual countries must report their emissions by sector to the United Nations Framework Convention on Climate Change (UNFCCC) on a yearly basis for Annex I (developed) countries. The enhanced transparency framework of the Paris Agreement requires all countries to submit national sector-resolved emissions for expert review by November 2024 as basis for setting their nationally determined contributions to meet climate goals. Independently of the Paris Agreement, over 110 countries have now signed the Global Methane Pledge of 2021, committing them to reduce their collective 2030 methane emissions by 30% relative to 2020 levels. Satellites can help to quantify national emissions by sector as baseline for setting methane reduction goals and can then monitor emissions over time to evaluate success in achieving those goals. They provide near-real-time information on emissions, whereas bottom-up inventories typically have latencies of a few years, and are thus a unique resource to document rapid changes in emissions (Barré et al., 2021).

Jacob et al. (2016) previously reviewed the state of the science for quantifying methane emissions from space. They presented observing capabilities at the time, discussed the inverse methods for inferring methane emissions from satellite observations, and laid out observing requirements for future satellite missions. Since then, new satellite instruments for measuring atmospheric methane have been launched and new capabilities for detecting methane point sources from space have emerged. New analytical tools have been developed to infer emissions from satellite observations, including for point sources. Additional satellite instruments are scheduled to be launched over the next few years that will augment current capabilities. These new developments motivate our updated review.

2 Observing atmospheric methane from space

2.1 Current and planned instruments

Table 1 lists current and scheduled satellite instruments with documented or expected capability for quantifying methane emissions, and Table 2 gives specific attributes for each. We classify the instruments as area flux mappers or point source imagers, and Fig. 1 illustrates these two fleets. Area flux mappers are designed to observe total emissions on global or regional scales with 0.1–10 km pixel size. Point source imagers are fine-pixel (< 60 m) instruments designed to quantify individual point sources by imaging the plumes. Point source imagers have much finer spatial resolution than area flux mappers but lower precision.

All instruments in Table 1 except MERLIN observe methane by SWIR solar backscatter from the Earth's surface, either at 1.63–1.70 μm (1.65 μm band) or at 2.2–2.4 μm (2.3 μm band). Atmospheric scattering is weak in the SWIR except for clouds and large aerosol particles. Under clear skies, methane is observed down to the surface with near unit sensitivity (Worden et al., 2015). The retrieval may fail if the surface is too dark, such as over water or forest canopies (Ayasse et al., 2018). Observations over water can be made by sunglint when the sun–satellite viewing geometry is favorable. The MERLIN lidar instrument emits its own 1.65 μm radiation and detects the reflected signal. It can observe over water and at night, but its sensitivity and coverage are lower than for the solar backscatter instruments. Lidar capability to observe methane from space is currently limited by laser technology (Riris et al., 2019).

Not included in Table 1 are instruments that measure methane in the thermal infrared (TIR) or by solar occultation. These instruments are not sensitive to methane near the surface and are therefore not directly useful for quantifying methane emissions. TIR instruments have been used for remote sensing of methane plumes from aircraft (Hulley et al., 2016), but measurements from satellites mainly sense the upper tropospheric background (Worden et al., 2015). Solar occultation instruments such as ACE-FTS provide sensitive measurements of stratospheric methane profiles (Koo et al., 2017) but cloud interference prevents observations in the troposphere. TIR and solar occultation instruments can complement SWIR data by providing information on background methane in the upper troposphere and stratosphere (Zhang et al., 2021; Tu et al., 2022).

The spectrally resolved SWIR backscattered solar radiation detected by satellite under clear-sky conditions can be used to retrieve the total atmospheric column of methane, Ω_{CH_4} [molecules cm^{-2}], as will be reviewed in Sect. 2.2. To remove the variability from surface pressure, measurements are typically reported as dry column mixing ratio $X_{\text{CH}_4} = \Omega_{\text{CH}_4} / \Omega_{\text{a,d}}$, where $\Omega_{\text{a,d}}$ is the dry air column [molecules cm^{-2}]. Normalizing to dry air rather than total air avoids introducing dependence on water vapor.

All instruments in Table 1 except EMIT and GeoCarb are in low-elevation polar sun-synchronous orbit and observe globally at specific local times of day, either morning or early afternoon. Morning has greater probability of clear sky, while early afternoon has steadier boundary layer winds for interpreting methane enhancements. GOSAT (2009–present) and its follow-on GOSAT-2 (2018–present) provide global coverage every 3 d for 10 km circular pixels spaced about 270 km apart, while TROPOMI (2018–present) provides full global daily coverage with $5.5 \times 7 \text{ km}^2$ pixels. Figure 2 shows mean TROPOMI X_{CH_4} data for two different seasons, illustrating the dense coverage. Future instruments GOSAT-GW (2023 launch, $10 \times 10 \text{ km}^2$ pixels with full global coverage every 3 d in wide-swath mode), Sentinel-5 (2024 launch, $7.5 \times 7.5 \text{ km}^2$ pixels with full global daily coverage), and CO2M (2025 launch, $2 \times 2 \text{ km}^2$ pixels with full global coverage every 5 d) will continue the global observation record. MERLIN will provide day and night global coverage along its lidar orbit track. Sentinel-2 and Landsat instruments provide full global coverage with 20–30 m pixels every 5 d (Sentinel-2) or 16 d (Landsat) and can detect very large point sources over bright spectrally homogeneous surfaces. EMIT (designed to observe arid surfaces for dust generation) will be on a 51.6° inclined orbit aboard the International Space Station with variable local overpass times. GeoCarb will be in geostationary orbit over the Americas and will provide subdaily observations from 45° S to 55° N .

Several narrow-swath instruments in Table 1 are selective in their observations to focus on specific targets and avoid cloudy conditions. The GHGSat instruments observe selected $12 \times 12 \text{ km}^2$ scenes with $25 \times 25 \text{ m}^2$ pixel resolution and instrument pointing to increase the signal-to-noise ratio (SNR). Carbon Mapper will observe 18 km swaths with imaging strips as long as 1000 km in push-broom mode and shorter strips in target-track (instrument-pointing) mode. GHGSat has six satellites in orbit as of this writing to achieve frequent return times, and Carbon Mapper similarly plans a constellation of satellites. WorldView-3 observes scenes of dimensions up to $66.5 \times 112 \text{ km}^2$. MethaneSAT will observe $200 \times 200 \text{ km}^2$ targets in oil and gas systems and agricultural regions with $130 \times 400 \text{ m}^2$ pixel resolution, enabling high-resolution quantification of regional emissions as well as imaging of large point sources.

All area flux mappers in Table 1 have fine (< 0.5 nm) spectral resolution to enable precise measurements of methane concentrations, traded against coarser (0.1–10 km) spatial resolution. GHGSat achieves a combination of fine spatial resolution and fine spectral resolution by instrument pointing. Most other point source imagers in Table 1 are designed to observe land surfaces, which requires fine spatial resolution (< 50 m) but less stringent spectral resolution. These instruments have serendipitous capability to detect methane plumes in the broad 2.3 μm band, including hyperspectral sensors with $\sim 10 \text{ nm}$ spectral resolution (PRISMA, EnMAP, EMIT; Cusworth et al., 2019) and even multispectral sensors

Table 1. Current and planned SWIR satellite instruments for observing atmospheric methane^a.

Instrument	Organization ^b	Launch date	Nadir pixel size	Coverage	Return time (d) ^c	Methane band (nm) ^d	Spectral resolution (nm) ^e	Precision ^f	Reference
Area flux mappers ^g									
GOSAT ^h	JAXA, MOE, NIES	2009	10 km diameter ⁱ	global	3	1.65, 2.3 ^j	0.06	0.7%	Parker et al. (2020); Noël et al. (2022)
TROPOMI	ESA	2017 ^k	5.5 × 7 km ²	global	1	2.3	0.25	0.8% ^l	Lorente et al. (2021a)
GOSAT-GW	JAXA, MOE, NIES	2023	1 × 1–10 × 10 km ^{2*}	global + targets	3	1.65	0.06	0.6%	NIES (2021)
MethaneSAT	EDF	2023	130 × 400 m ²	200 × 200 km ² targets	3–4	1.65	0.3	0.1%–0.2% ⁿ	Rohrschneider et al. (2021)
Sentinel-5	ESA	2024	7.5 × 7.5 km ²	global	1	1.65, 2.3	0.25	0.8%	ESA (2020)
GeoCarb	NASA	2025	6 × 3 km ²	N and S America ^o	0.5	2.3	0.2	0.3%–0.6%	Moore et al. (2018)
CO2M	ESA	2025	2 × 2 km ²	global	5	1.65	0.3	0.6%	Sierk et al. (2019)
MERLIN	CNES, DLR	2027	0.1 × 50 km ^{2p} global	28	1.65	3 × 10–4q	1.5%	Ehret et al. (2017)	
Point source imagers ^r									
Landsat-8 ^s	USGS	2013	30 × 30 m ²	global	16	2.3	200	30%–90% ¹	Ehret et al. (2022)
WorldView-3	Digital Globe	2014	3.7 × 3.7 m ²	66.5 × 112 km ² targets	< 1	2.3	50	6%–19% ¹	Sanchez-Garcia et al. (2022)
Sentinel-2	ESA	2015	20 × 20 m ²	global	2–5	2.3	200	30%–90% ¹	Yaron et al. (2021)
GHGSat ^u	GHGSat, Inc.	2016	25 × 25 m ²	12 × 12 km ² targets	1–7 ^v	1.65	0.3	1.5% ^w	Jervis et al. (2021)
PRISMA ^x	ASI	2019	30 × 30 m ²	30 × 30 km ² targets	4	2.3	10	3%–9%	Quanter et al. (2021)
EnMAP ^x	DLR	2022	30 × 30 m ²	30 × 30 km ² targets	4	2.3	10	3%–9%	Cusworth et al. (2019)

Table 1. Continued.

EMIT	NASA	2022	60 × 60 m ²	Dust-emitting regions ^y	3	2.3	9	2 %–6 % ^z	Cusworth et al. (2019)
<i>Carbon Mapper</i> ^{aa}	Carbon Mapper and Planet	2023	30 × 30, 30 × 60 m ²	18 km swaths ^{ab}	1–7 ^v	2.3	6	1.2 %–1.5 %	Duren (2021)

^a This table lists shortwave infrared (SWIR) satellite instruments currently operating or scheduled for launch that have documented methane-observing capabilities and offer publicly accessible data (some for purchase; see Table 2). Instruments not yet launched are in italics, and launch dates are estimates as of this writing. All instruments are in low-elevation polar sun-synchronous orbits except for GeoCarb, which will be in geostationary orbit over the Americas, and EMIT, which will be in an inclined precessing orbit. All instruments measure SWIR solar radiation backscattered from the Earth's surface except for MERLIN, which is a lidar instrument. The Gaofen-5 series of Chinese satellites has capabilities similar to PRISMA and EnMAP (Irakulis-Loitxate et al., 2021) but is not included in the table because of the opacity of data acquisition and distribution.

^A A more comprehensive list of instruments, including from private companies with proprietary data, is available from GEO, Climate TRACE, WGIC (2021).

^b Organization abbreviations are as follows: JAXA is the Japan Aerospace Exploration Agency, MOE is the Ministry of Environment, NIES is the National Institute for Environmental Studies, ESA is the European Space Agency, EDF is the Environmental Defense Fund, NASA is the National Aeronautics and Space Administration, CNES is the Centre National d'Etudes Spatiales, DLR is the Deutsches Zentrum für Luft- und Raumfahrt, USGS is the United States Geological Survey, and ASI is the Agenzia Spaziale Italiana.

^c Time interval between successive viewings of the same scene.

^d Most useful band(s) for methane retrieval. The 1.65 and 2.3 μm bands have exploitable features at 1.63–1.70 and 2.2–2.4 μm , respectively.

^e Full width at half maximum.

^f Precision is reported as a percentage of the retrieved dry column methane mixing ratio X_{CH_4} .

^g Area flux mappers are primarily designed to quantify total methane emissions on regional to global scales.

^h The TANSO-FTS instrument aboard the GOSAT satellite. The instrument is commonly referred to as GOSAT in the literature. GOSAT-2 was launched in 2018 with specifications similar to GOSAT but adding a 2.3 μm band (Suto et al., 2021).

ⁱ Circular pixels separated by about 270 km along-track and cross-track distance.

^j The 2.3 μm band was added in GOSAT-2.

^k TROPOMI was launched in October 2017, but the methane data stream begins in May 2018.

^l The TROPOMI product reports a much higher precision of ~ 2 ppb, but this only includes error from the measured radiances. Accounting for retrieval errors by validation with TCCON data indicates a precision of 0.8 % (Schneising et al., 2019).

^m Narrow-swath mode (1×1 to $3 \times 3 \text{ km}^3$ pixels) for urban regions and wide-swath mode ($10 \times 10 \text{ km}^2$) for global coverage.

ⁿ For 1–5 km binned data.

^o From 45° S to 55° N.

^p Integrating the signal along 50 km of the lidar orbit track.

^q Lidar online and offline sampling at 1645.552 and 1645.846 nm, respectively.

^r Point source imagers quantify emissions from individual point sources by imaging of the atmospheric plume.

^s Landsat-9 was launched in 2021 with a similar capability to Landsat-8.

^t For favorable (bright and spectrally homogeneous) surfaces.

^u Including GHGSat-D (2016), GHGSat-C1 (2020), GHGSat-C2 (2021), and GHGSat-C3–GHGSat-C5 (2022). Plans are for six more launches in 2023.

^v For the constellation. Individual satellites have return times of about 14 d.

^w For the GHGSat-C satellites. GHGSat-D has a precision of 12 %–25 %.

^x Other planned hyperspectral imagers with observing capabilities similar to PRISMA and EnMAP include SBG and CHIME (Cusworth et al., 2019).

^y EMIT is a surface mineral dust mapper that will fly on the International Space Station in a 51.6° inclined orbit and will target arid areas.

^z Based on the precision of PRISMA (Guanter et al., 2021) and the higher spectral resolution of EMIT (Cusworth et al., 2019).

^{aa} Carbon Mapper is expected to be a constellation of satellites with two launches in 2023 and a goal of six launches in 2024.

^{ab} Carbon Mapper push-broom mode has imaging strips as long as 1000 km with $30 \times 60 \text{ m}^2$ pixels. Carbon Mapper target-tracking mode has shorter imaging strips with $30 \times 30 \text{ m}^2$ pixels and ground-motion compensation to achieve higher signal-to-noise ratio (lower detection threshold).

Table 2. Attributes and data availability for satellite instruments observing atmospheric methane^a.

Instrument	Attributes	Data availability ^b
Area flux mappers		
GOSAT	Long-term record of high-quality data	L2, open
TROPOMI	Global continuous daily coverage	L2, open
<i>GOSAT-GW</i>	High-resolution mapping of urban areas	L2, open
<i>MethaneSAT</i>	High-resolution mapping of oil/gas/agricultural source regions with imaging of large point sources	L1, L2, and L4, open ^c
<i>Sentinel-5</i>	Global continuous daily coverage including the 1.65 μm band	L2, open
<i>GeoCarb</i>	Continuous coverage for methane-CO ₂ -CO over North and South America with subdaily observations	L2, open
<i>CO2M</i>	High-resolution global continuous coverage	L2, open
<i>MERLIN</i>	Arctic and nighttime observations	L2
Point source imagers		
Sentinel-2, Landsat	Global continuous data acquisition, long-term records	L1, open
WorldView-3	Very high spatial resolution	L1, for purchase
GHGSat	High sensitivity ($\sim 100 \text{ kg h}^{-1}$), established constellation	L2 and L4, for purchase ^d
PRISMA, EnMAP	Medium sensitivity ($100\text{--}1000 \text{ kg h}^{-1}$), extensive coverage	L1, free on request
<i>EMIT</i>	Medium sensitivity ($100\text{--}1000 \text{ kg h}^{-1}$), extensive coverage of low-latitude arid regions	L1, open ^e
<i>Carbon Mapper</i>	High sensitivity ($\sim 100 \text{ kg h}^{-1}$), high observing system completeness	L2 and L4, open ^f

^a See Table 1 for the specifications of each instrument. Instruments not yet launched are in italics.

^b L1 (Level 1) indicates measured radiances, L2 indicates retrieved column dry mixing ratio X_{CH_4} , L4 indicates derived emission rates.

^c L1 and L2 data will be made available upon request.

^d Data may also be obtained from space agencies through agreements negotiated with GHGSat.

^e Generation of an L2 product is under discussion.

^f L1 data will be available for purchase.

with a single 2.3 μm channel (Sentinel-2, Landsat; Varon et al., 2021) or a few channels (WorldView-3; Sanchez-Garcia et al., 2022). Carbon Mapper will have 6 nm spectral resolution, which increases precision appreciably relative to 10 nm (Cusworth et al., 2019).

All area flux mappers in Table 1 have an open data policy allowing free access from a distribution website or from the cloud. The data are generally provided as X_{CH_4} retrievals (Level 2 or L2). MethaneSAT will distribute its data publicly as inferred methane fluxes (L4), with the L1 and L2 data also available upon request. Data access for point source imagers is presently less straightforward. Sentinel-2 and Landsat have

freely accessible channel radiance (L1) data, but users must perform their own methane retrievals and source rate estimates. GHGSat and WorldView-3 make observations at the request of paying customers, with GHGSat providing column density (L2) and source rate (L4) data and WorldView-3 providing L1 data. PRISMA and EnMAP make observations upon request from the scientific community and stakeholders, and the resulting L1 data are then freely accessible, but again users must perform their own methane retrievals. Carbon Mapper will provide open L2 and L4 data.

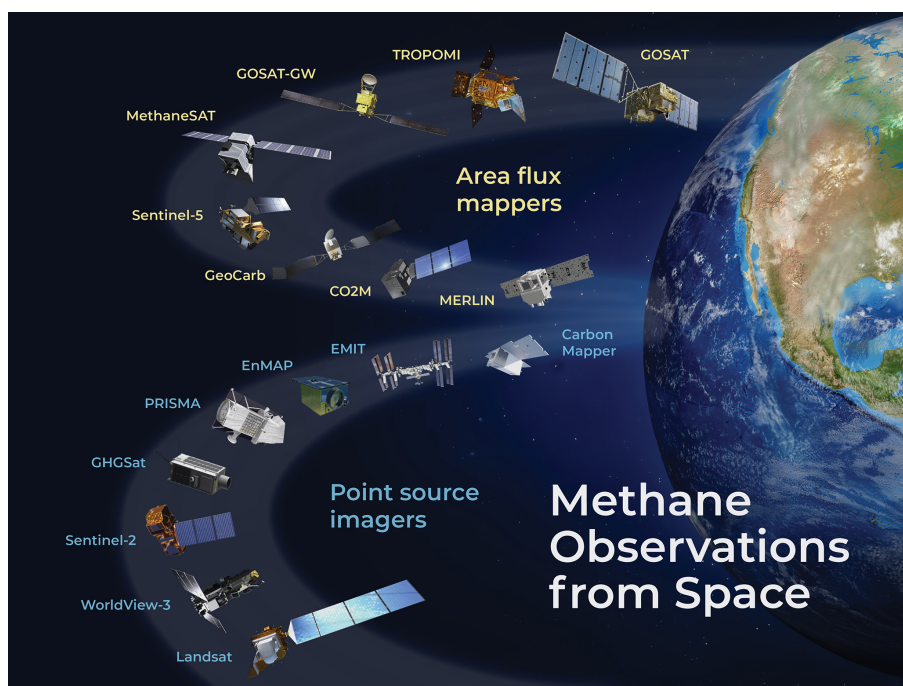


Figure 1. Satellite instruments for observation of methane in the shortwave infrared (SWIR). Area flux mappers are designed to quantify total methane emissions on regional to global scales. Point source imagers are designed to quantify emissions from individual point sources by imaging the atmospheric plumes. Specifications for each instrument are in Tables 1 and 2. Satellite icons were obtained from <https://www.gosat.nies.go.jp> (last access: 22 July 2022) for GOSAT; Wikipedia Commons for TROPOMI, EMIT (International Space Station), and Sentinel-2; <https://space.skyrocket.de> (last access: 22 July 2022) for GOSAT-GW, MERLIN, CO2M, and Carbon Mapper; <https://www.methanesat.org> (last access: 22 July 2022) for MethaneSAT; ESA (2020) for Sentinel-5; <https://www.ou.edu/geocarb/mission> (last access: 22 July 2022) for GeoCarb; <https://www.planetek.it/> (last access: 22 July 2022) for PRISMA; <https://www.ghgsat.com/> (last access: 22 July 2022) for GHGSat; <https://www.enmap.org/mission> (last access: 22 July 2022) for EnMAP; <https://directory.eoportal.org> (last access: 22 July 2022) for WorldView-3; and <https://www.usgs.gov/landsat-missions> (last access: 22 July 2022) for Landsat.

2.2 Retrieval methods

The “full-physics” retrieval of methane columns from satellite SWIR spectra involves inversion of the spectra with a radiative transfer model (Butz et al., 2012; Thorpe et al., 2017). It typically solves simultaneously for the vertical profile of methane concentration, the vertical profile of aerosol extinction, and the surface reflectivity. Although the vertical profile of methane may be retrieved in the inversion, there is actually no significant information on vertical gradients, and only X_{CH_4} is reported together with an averaging kernel vector for sensitivity to the vertical profile (near unity in the troposphere). The retrieval may fail if the atmosphere is hazy or if the surface is heterogeneous or too dark. Full-physics TROPOMI retrievals in the $2.3\ \mu\text{m}$ band thus have only a 3% global success rate over land (Lorente et al., 2021a) with large variability depending on location (Fig. 2). Arid areas and midlatitudes are relatively well observed. Observations are much sparser in the wet tropics because of extensive cloudiness and dark surfaces and in the Arctic because of seasonal darkness, extensive cloudiness, and low sun an-

gles. Observations at high latitudes are very limited outside of summer, resulting in a seasonal sampling bias.

The $1.65\ \mu\text{m}$ band allows the alternative CO_2 proxy retrieval, taking advantage of the adjacent CO_2 absorption band at $1.61\ \mu\text{m}$ (Frankenberg et al., 2005). In this method, Ω_{CH_4} and Ω_{CO_2} are retrieved simultaneously without accounting for atmospheric scattering, and X_{CH_4} is then derived as

$$X_{\text{CH}_4} = \left(\frac{\Omega_{\text{CH}_4}}{\Omega_{\text{CO}_2}} \right) X_{\text{CO}_2}, \quad (1)$$

where X_{CO_2} is independently specified, typically from assimilated observations or from a global chemical transport model (Parker et al., 2020; Palmer et al., 2021). The CO_2 proxy method takes advantage of the lower variability of CO_2 than methane and of the low CO_2 co-emission from the dominant methane sources (livestock, oil and gas systems, coal mining, landfills, wastewater treatment, rice cultivation, wetlands). It is much faster than the full-physics retrieval, achieves similar precision and accuracy (Buchwitz et al., 2015), and largely avoids biases associated with surface reflectivity and aerosols because these biases tend to cancel in the $\Omega_{\text{CH}_4}/\Omega_{\text{CO}_2}$ ratio. It is subject to errors from unresolved variability of CO_2 such

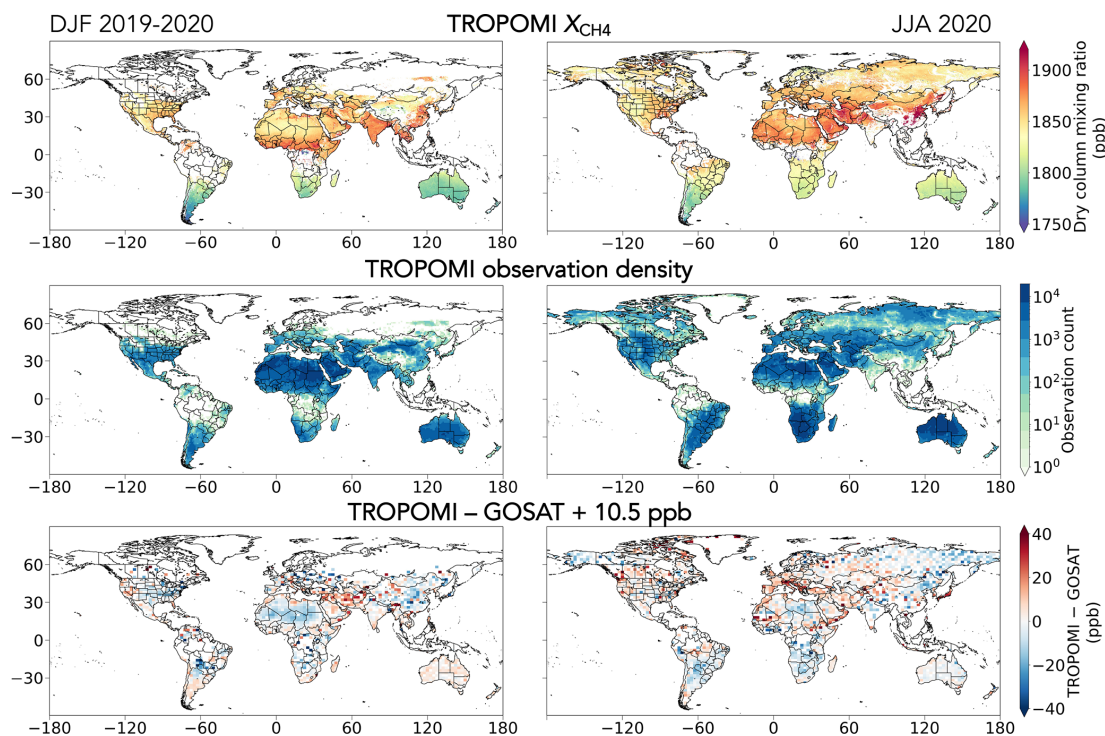


Figure 2. Global TROPOMI observations of methane for December 2019–February 2020 and June–August 2020. Data are from the version 2.02 product, filtering out low-quality retrievals ($qa_value < 0.5$) and snow and ice surfaces diagnosed by blended albedo > 0.8 (Lorente et al., 2021a). The top panels show the mean dry methane column mixing ratios X_{CH_4} on a $0.1^\circ \times 0.1^\circ$ grid. The middle panels show the observation density as the number of successful observations per $1^\circ \times 1^\circ$ grid cell for the 3-month periods. The bottom panels show the mean X_{CH_4} differences between colocated TROPOMI and GOSAT observations plotted on a $2^\circ \times 2.5^\circ$ grid and adjusted upward by 10.5 ppb to account for TROPOMI being 10.5 ppb lower than GOSAT in the global mean. GOSAT data are from the CO₂ proxy retrieval version 9.0 of Parker et al. (2020).

as in urban regions and is also subject to bias for sources that co-emit methane and CO₂ such as flaring and other incomplete combustion. The GOSAT instrument operating at 1.65 μm with 10 km pixels has a 24 % success rate over land using the CO₂ proxy retrieval, mainly limited by cloud cover (Parker et al., 2020).

A limitation in using the 1.65 μm band is that it is narrower, with fewer spectral features and weaker absorption than the 2.3 μm band, and it therefore requires an instrument with sub-nanometer spectral resolution (Cusworth et al., 2019; Jongaramrungruang et al., 2021). The 2.3 μm band can be successfully sampled for a full-physics retrieval by hyperspectral instruments with ~ 10 nm spectral resolution (Thorpe et al., 2014, 2017; Cusworth et al., 2021a; Borchardt et al., 2021; Irakulis-Loitxate et al., 2021). Precision improves with spectral resolution (Cusworth et al., 2019; Jongaramrungruang et al., 2021) and with spectral positioning relative to the methane absorption lines (Scaffuto et al., 2021). Multispectral instruments with one or several broadband channels (~ 100 nm bandwidth) do not allow a spectrally resolved retrieval, but a simple Beer's law retrieval of the methane column enhancement in a plume relative to background can still be achieved in the 2.3 μm band by infer-

ring surface reflectivity from adjacent bands or from views of the same scene when the plume is absent (Varon et al., 2021; Sanchez-Garcia et al., 2022).

Yet another approach for retrieving methane enhancements from point sources is the matched-filter method in which the observed spectrum is fitted to a background spectrum convolved with a target methane absorption spectrum capturing the 2.3 μm absorption band (Thompson et al., 2015; Foote et al., 2020). Matched filter methods have been extensively used for mapping methane point sources from airborne hyperspectral campaigns (Frankenberg et al., 2016; Duren et al., 2019; Cusworth et al., 2021b) and have also been used for satellite retrieval of point sources (Thompson et al., 2016; Guanter et al., 2021; Irakulis-Loitxate et al., 2021). These methods directly retrieve the methane enhancement above background and are faster than a full-physics retrieval. They are well-suited methods for plume imaging, where the methane enhancement above local background is the quantity of interest.

2.3 Precision and accuracy

Retrievals of X_{CH_4} may be affected by random error (precision) and systematic error (bias or accuracy). A uniform bias is inconsequential because it can be simply subtracted. Random error is reducible by temporal averaging if the observation density is high. The most pernicious error is spatially variable bias, often called relative bias (Buchwitz et al., 2015), which is generally caused by aliasing of surface reflectivity spectral features into the methane retrieval. Variable bias corrupts the retrieved concentration gradients and produces artifact features that may be wrongly attributed to methane.

Area flux mapper instruments are generally validated by reference to the highly accurate X_{CH_4} measurements from the worldwide Total Carbon Column Observing Network (TCCON) of ground-based sun-staring spectrometers (Wunch et al., 2011). Variable bias can be estimated as the spatial standard deviation across TCCON sites of the temporal mean bias (Buchwitz et al., 2015). Schneising et al. (2019) inferred in this manner a global bias of -1.3 ppb for the TROPOMI University of Bremen methane retrieval, a precision of 14 ppb, and a variable bias of 4.3 ppb. Lorente et al. (2021a) inferred a global mean bias of -3.4 ppb and a variable bias of 5.6 ppb for the current TROPOMI version 2 Netherlands Institute for Space Research (SRON) operational retrieval. Figure 3 places these values in the context of TROPOMI observations over the Permian Basin oil field in Texas and New Mexico. A typical single day of TROPOMI observations shows large areas of missing and noisy data, and thus temporal averaging is necessary, which also reduces the random error. Averaging TROPOMI observations over a month shows full coverage of the Permian with enhancements of ~ 50 ppb over the principal areas of oil and gas production, well above the variable bias of the instrument.

Reliance on the TCCON network to diagnose variable bias is limited by the sparsity of network sites, almost all of which are at northern midlatitudes. An alternative way is by reference to GOSAT. The current version 9 GOSAT retrieval using the CO_2 proxy method has a variable bias of only 2.9 ppb referenced to TCCON and is recognized as a well-calibrated measurement (Parker et al., 2020). Spatial variability in the mean TROPOMI–GOSAT difference provides a global assessment of TROPOMI variable bias (Qu et al., 2021). Results in Fig. 2 (bottom panel), after correcting for a global mean TROPOMI–GOSAT difference of -10.5 ppb (TROPOMI lower than GOSAT), show that TROPOMI variable biases can exceed 20 ppb in some regions. The reason for such large biases relative to GOSAT is TROPOMI's coarser spectral sampling of the SWIR region, as well as the unavailability of the CO_2 proxy retrieval at $2.3 \mu\text{m}$. Comparing TROPOMI and GOSAT observations for a region of interest is good practice before interpreting TROPOMI data for that region (Z. Chen et al., 2022).

Variable bias is also a concern for point source imagers, where it manifests as artifact features that could be mistaken for methane plumes (Ayasse et al., 2018). This is of particular concern for heterogeneous surfaces (Cusworth et al., 2019). Artifacts can be screened by visual inspection of the candidate plumes in relation to wind direction, known infrastructure, and surface reflectivity (Guanter et al., 2021). Machine-learning methods can also be trained to detect plumes and recognize artifact noise patterns (Jongaramrungruang et al., 2022). Figure 3 shows illustrative observations of point sources from Sentinel-2, PRISMA, and GHGSat in the Permian Basin. The observations have lower precision than TROPOMI (Table 1), but the methane enhancements are much larger because the pixels are smaller. Point source detection thresholds and their relationship to precision are discussed in Sect. 5.

3 Global, regional, and point source observations

Figure 4 classifies the satellite instruments of Table 1 in terms of their abilities to observe methane on global and regional scales as area sources (area flux mappers) or on the scale of individual point sources (point source imagers). Observations of these different scales target complementary needs for our understanding of methane, and they correspondingly have different observing requirements. Area sources may integrate a very large number of individually small emitters that cumulate to a large total, such as low-production oil wells (Omara et al., 2022). A practical definition of a methane point source for our purposes, following Duren et al. (2019), is a single facility emitting more than 10 kg h^{-1} over an area less than $30 \times 30 \text{ m}^2$. This represents a typical limit of detection from aircraft remote sensing combined with a typical spatial resolution for point source imagers. With this definition of source threshold, Cusworth et al. (2022) find on average that 40 % of emissions from US oil and gas fields originate from point sources. This emphasizes the need for characterizing methane emissions complementarily both as area sources and as point sources.

3.1 Global and regional observations with area flux mappers

Global observation of methane targets the central question of why atmospheric methane has almost tripled since pre-industrial times and why it continues to increase. Ground network measurements such as from NOAA are the reference for observing global trends because of their high accuracy (Bruhwiler et al., 2021), and some sites include isotopic or other information to separate contributions from different source sectors (Lan et al., 2021). But satellites have an essential role to play because of their dense and global coverage. They can identify the regions that drive the global trend (Zhang et al., 2021). They have a unique capability to evaluate the accuracy and trends of methane emissions reported

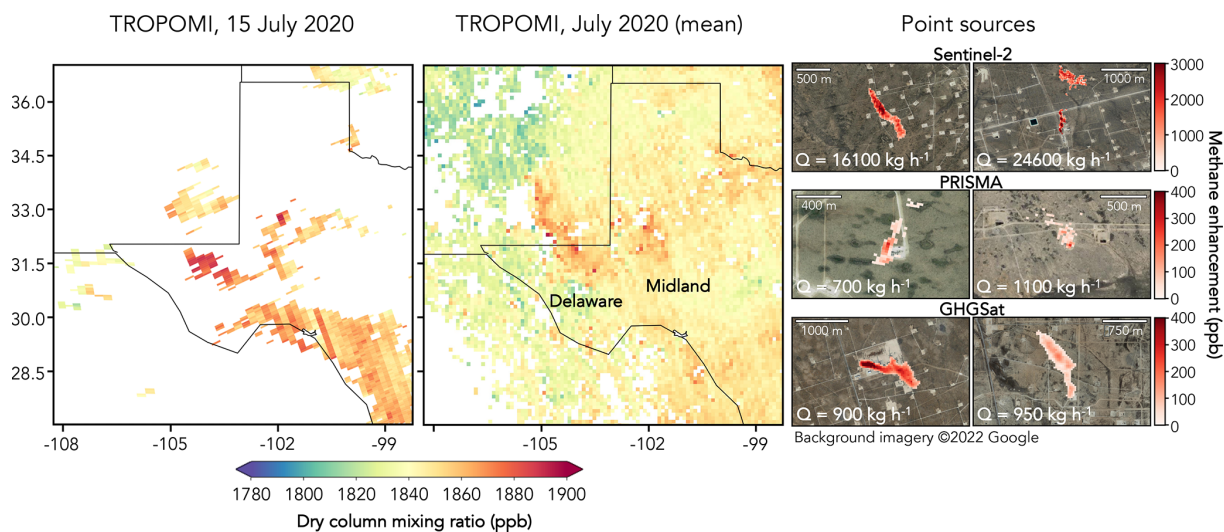


Figure 3. Satellite observations of atmospheric methane over the Permian Basin (Texas and New Mexico) in July 2020. The left panel shows typical TROPOMI observations for 1 d (July 15), featuring large areas of missing data where the retrieval was not successful because of cloud cover or other factors. The middle panel shows monthly mean TROPOMI observations on a $0.1^\circ \times 0.1^\circ$ grid, featuring enhancements over the Delaware and Midland basins where oil production is concentrated. TROPOMI data are from the version 2.02 retrieval of Lorente et al. (2021a). The right panel shows sample observations of plumes from point sources by Sentinel-2, PRISMA, and GHGSat superimposed on surface imagery from © Google Earth. Plume dimensions and inferred point source rates (Q) are given as an inset. See Sect. 4.2 for the inference of point source rates from plume observations.

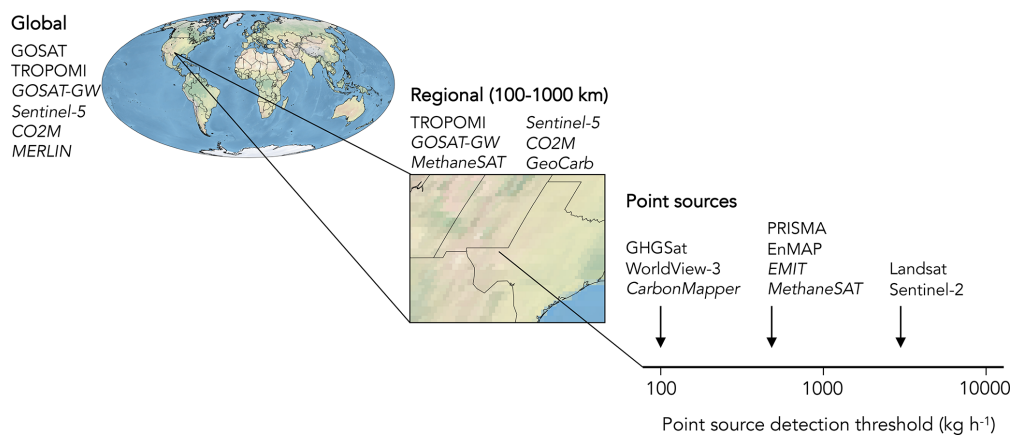


Figure 4. Classification of satellite instruments by their capability to observe atmospheric methane on global scales, on regional scales with high resolution, and for point sources. Specifications for the satellite instruments are listed in Table 1, and key attributes are listed in Table 2. Point source detection thresholds are given here as orders of magnitude. These detection thresholds are discussed in Sect. 5.2. Instruments not yet launched are in italics.

by individual countries to the UNFCCC (Janardanan et al., 2020) and thus contribute to the transparency framework of the Paris Agreement (Deng et al., 2022; Worden et al., 2022).

Global observation of methane from space is presently available from GOSAT and TROPOMI. GOSAT provides a continuous and well-calibrated record going back to 2009 (Parker et al. 2020). Inversions of GOSAT data have been used to attribute the contributions of different source regions and sectors to the methane increase over the past decade (Maasackers et al., 2019; Chandra et al., 2021; Palmer et al.,

2021; Zhang et al., 2021). The TROPOMI data stream begins in May 2018 and is much denser than GOSAT, but the ability to use TROPOMI data in global inversions is presently limited by large variable biases in some regions of the world (Qu et al., 2021; Fig. 2). This is likely to improve with future retrieval versions and may be overcome with careful data selection. Continuity of global methane observations from space is expected over the next decade with the GOSAT series (GOSAT-2, GOSAT-GW), Sentinel-5, and CO2M (Table 1). MERLIN could make an important contribution toward bet-

ter understanding of methane emissions in the Arctic, which is otherwise difficult to observe from space.

There is considerable interest in using satellite observations to quantify methane emissions with high resolution on regional scales. This is important for reporting of emissions at the national or sub-national state level, for monitoring oil and gas production basins, and for separating contributions from different source sectors. Oil and gas production basins are typically a few hundred kilometers in size and may contain thousands of point sources that are individually small but add up to large totals and are best quantified on a regional scale (Lyon et al., 2015). Several field campaigns using surface and aircraft measurements have targeted oil and gas fields in North America (Karion et al., 2015; Pétron et al., 2020; Lyon et al., 2021), but these campaigns are necessarily short and are not practical in many parts of the world.

TROPOMI with its $5.5 \times 7 \text{ km}^2$ pixel resolution and global continuous daily coverage is presently the only satellite instrument capable of high-resolution regional mapping of methane emissions. GOSAT data are too sparse. TROPOMI has been used to quantify emissions from oil and gas production fields including the Permian Basin (Zhang et al., 2020), other fields in the US and Canada (Shen et al., 2022), and the Mexican Sureste Basin (Shen et al., 2021), revealing large underestimates in the bottom-up inventories. It has also been used to quantify total methane emissions from China and to attribute them to source sectors (Z. Chen et al., 2022). The variable bias problems that affect global TROPOMI inversions can be less problematic on the scale of source regions where methane enhancements are large, the bias may be less severe (Fig. 2), and bias correction is possible through adjustment of boundary conditions in the transport model (Shen et al., 2021). Capability for regional mapping of methane emissions is expected to greatly expand in the future with the MethaneSAT, GOSAT-GW, Sentinel-5, and CO2M instruments.

3.2 Point source observations with point source imagers

Monitoring large point sources is important for reporting of emissions, and detection of unexpectedly large point sources (super-emitters) can enable prompt corrective action. In situ sampling and remote sensing from aircraft has been used extensively to quantify point sources (Frankenberg et al., 2016; Lyon et al., 2016; Duren et al., 2019; Hajny et al., 2019; Y. Chen et al., 2022; Cusworth et al., 2022) but is limited in spatial and temporal coverage. Satellites again have an essential role to play. They have enabled the discovery of previously unknown releases (Varon et al., 2019; Lauvaux et al., 2022) and the quantification of time-integrated total emissions from gas well blowouts (Cusworth et al., 2021a; Maasackers et al., 2022a).

Observing point sources from space has unique requirements. Plumes are typically less than 1 km in size (Frankenberg et al., 2016; Fig. 3), thus requiring satellite pixels finer

than 60 m (Ayasse et al., 2019). It is desirable to quantify emissions from single overpasses, though temporal averaging of plumes to improve SNR is possible with wind rotation if the precise location of the source is known (Varon et al., 2020). The emissions are temporally variable, motivating frequent revisit times that can be achieved by a constellation of instruments. On the other hand, precision requirements are less stringent than for regional or global observations because of the larger magnitude of the concentration enhancements.

The potential for space-based land imaging spectrometers to detect methane point sources was first demonstrated with the hyperspectral Hyperion instrument for the Aliso Canyon blowout (Thompson et al., 2016). Hyperspectral sensors such as PRISMA and others of similar design have since proven capable of quantifying point sources of $\sim 500 \text{ kg h}^{-1}$ (Cusworth et al., 2021a; Guanter et al., 2021; Irakulis-Loitxate et al., 2021; Nesme et al., 2021). The first satellite instrument dedicated to quantifying methane point sources was the GHGSat-D demonstration instrument launched in 2016 with $50 \times 50 \text{ m}^2$ effective pixel resolution and a precision of 12 %–25 % depending on surface type (Jervis et al., 2021). Varon et al. (2019) demonstrated the capability of that instrument for discovering and quantifying persistent point sources in the range $4000\text{--}40\,000 \text{ kg h}^{-1}$ in an oil and gas field in Turkmenistan. Five follow-up GHGSat instruments with precisions of 1 %–2 % were subsequently launched in 2020–2022, building up to a constellation with frequent return times.

Multispectral instruments such as Sentinel-2, Landsat, and WorldView-3 are also capable of detecting and quantifying very large point sources (Varon et al., 2021; Ehret et al., 2022; Sanchez-Garcia et al., 2022; Irakulis-Loitxate et al., 2022a). Sentinel-2 and Landsat provide global and freely accessible data that could form the foundation of a global detection system for super-emitters (Ehret et al., 2022). A large-scale survey of point emissions across the western coast of Turkmenistan was achieved with the combination of Sentinel-2 and Landsat (Irakulis-Loitxate et al., 2022a).

Detection of methane plumes from space has mainly been over bright land surfaces. Observation of offshore plumes such as from oil and gas extraction platforms is more difficult because of the low reflectance of water in the SWIR. The signal can be enhanced by observing in the sunglint mode, in which the sensor captures the solar radiation specularly reflected by the water. The sunglint observation configuration can be achieved by agile platforms able to point in the Sun-surface forward scattering direction (PRISMA, Worldview-3, GHGSat, Carbon Mapper) or by instruments with a field-of-view sufficiently large that part of the swath falls in the forward scattering area (TROPOMI, Sentinel-2, Landsat). Irakulis-Loitxate et al. (2022b) demonstrated the ability of sunglint retrievals from WorldView-3 and Landsat-8 to detect large plumes from offshore platforms in the Gulf of Mexico.

The capability to monitor methane point sources from space is expected to expand rapidly in coming years through the GHGSat and Carbon Mapper constellations as well as new hyperspectral missions (Cusworth et al., 2019). Expanding constellations observing with frequent return times and at different times of day will enable better understanding of the intermittency of methane emissions. In an aircraft survey of the Permian Basin, Cusworth et al. (2021b) found that individual point sources produced detectable emissions only 26 % of the time on average. Similar intermittency was observed for oil and gas facilities in California (Duren et al., 2019). Allen et al. (2017) and Vaughn et al. (2018) point out that some emissions from the oil and gas infrastructure are highly intermittent by design (liquids unloading, blow-downs, and startups) and may have predictable diurnal variations. Emissions due to equipment failure may be persistent (leaks, unlit flares), sporadic (responding to gas pressure), or single events (accidents). An increased frequency of observation can identify persistence of emissions to enable corrective action, and better understanding of point sources that are intermittent by design can lead to better quantification of time-averaged emissions. Beyond this short-term intermittency, there is also long-term variability related to operating practices and facility life cycle (Cardoso-Saldaña and Allen, 2020; Johnson and Heltzel, 2021; Varon et al., 2021; Allen et al., 2022; Ehret et al., 2022), stressing the importance of sustained long-term monitoring.

4 Inferring methane emissions from satellite observations

Inferring methane emissions from satellite observations of methane columns involves different methods for area flux mappers and point source imagers. Area flux mappers are typically used to optimize 2-D distributions of emissions on regional or global scales by inverse methods. Point source imagers are used to infer individual point source rates by some form of mass balance analysis.

4.1 Global and regional inversions with area flux mappers

Area flux mappers produce 2-D fields of methane observations from which to optimize 2-D fields of gridded emission fluxes. The optimization involves an atmospheric transport model (forward model) to relate emissions to the observed concentrations. The optimal emissions are generally obtained by Bayesian inference, fitting the observations to the forward model and including prior estimates of emissions to regularize the solution where the observations provide insufficient information (Brasseur and Jacob, 2017). Optimizing temporal trends of emissions can be done as part of the solution or sequentially using a Kalman filter (Feng et al., 2017).

The basic procedure is as follows. Given an ensemble of observations over a domain of interest assembled in an ob-

servaion vector \mathbf{y} , the task is to optimize the distribution of emission fluxes assembled in a state vector \mathbf{x} of dimension n . The relationship between \mathbf{x} and \mathbf{y} can be assumed linear for methane, despite the sensitivity of OH concentrations to methane concentrations. This is because the inversion does not significantly change the global methane concentration, which is set by observation; furthermore, for regional inversions, the timescale for ventilation of the regional domain is much shorter than that for chemical loss. Global inversions often optimize OH concentrations as part of the state vector and that relationship can also be assumed linear. Further assuming Gaussian error probability density functions (pdfs) for \mathbf{x} and \mathbf{y} , the optimal (posterior) estimate of \mathbf{x} is obtained by minimizing a Bayesian cost function $J(\mathbf{x})$ of the form (Brasseur and Jacob, 2017):

$$J(\mathbf{x}) = (\mathbf{x} - \mathbf{x}_A)^T \mathbf{S}_A^{-1} (\mathbf{x} - \mathbf{x}_A) + \gamma (\mathbf{y} - \mathbf{K}\mathbf{x})^T \mathbf{S}_O^{-1} (\mathbf{y} - \mathbf{K}\mathbf{x}), \quad (2)$$

Here \mathbf{x}_A is the prior estimate of emissions, \mathbf{S}_A is the corresponding prior error covariance matrix, $\mathbf{K} = \partial \mathbf{y} / \partial \mathbf{x}$ is the Jacobian matrix describing the sensitivity of observations to emissions as given by the atmospheric transport model, \mathbf{S}_O is the observational error covariance matrix including contributions from instrument and transport model errors, and γ is a regularization parameter that may be needed to correct overfit caused by imperfect definition of \mathbf{S}_O (Lu et al., 2021). Since the relationship between \mathbf{x} and \mathbf{y} is linear, \mathbf{K} fully defines the atmospheric transport model for the inversion. Jacob et al. (2016) describe alternative formulations for the cost function such as in geostatistical inverse modeling where prior information is provided as the relative spatial distribution of emissions rather than emission magnitudes (Miller et al., 2020).

Specification of the error covariance matrices \mathbf{S}_A and \mathbf{S}_O strongly affects the solution. Construction of \mathbf{S}_A can be done by intercomparing bottom-up inventories (Maasackers et al., 2016; Bloom et al., 2017) or by using error estimates generated by the bottom-up inventories (Scarpelli et al., 2020). Construction of \mathbf{S}_O can be done by the residual error method in which the observations are compared to simulated concentrations from the atmospheric transport model with prior emission estimates, and the residual difference after removing the mean bias is taken to be the observational error (Heald et al., 2004; Wecht et al., 2014). The observational error for satellites is generally found to be dominated by the instrument retrieval error rather than by the transport model error, whereas for in situ observations it is dominated by the transport model error (Lu et al., 2021).

Minimization of the cost function $J(\mathbf{x})$ in Eq. (2) to obtain the posterior solution $\hat{\mathbf{x}}$ and its error covariance matrix $\hat{\mathbf{S}}$ can be done either numerically or analytically (Brasseur and Jacob, 2017). $\hat{\mathbf{S}}$ and the related averaging kernel matrix $\mathbf{A} = \partial \hat{\mathbf{x}} / \partial \mathbf{x} = \mathbf{I}_n - \hat{\mathbf{S}} \mathbf{S}_A^{-1}$ (Rodgers, 2000) determine the information content from the observations and the ability of

the inversion to improve on the prior estimate. The diagonal terms of \mathbf{A} ranging from 0 to 1 are called the averaging kernel sensitivities and measure the ability of the observations to constrain the solution for that state vector element independently of the prior estimate (1 = fully, 0 = not at all). The trace of \mathbf{A} is called the degrees of freedom for signal (DOFS) and represents the total number of pieces of information that can be fully constrained from the observations. An inherent assumption is that the observations, the transport model, and the prior information are unbiased. Although the prior estimate is in principle unbiased since it represents our best estimate before the observations are taken, under-accounting of \mathbf{S}_A together with incorrect spatial distribution of prior emissions can drive bias in inversion results (Yu et al., 2021).

Numerical solution for $\min(J(\mathbf{x}))$ using the adjoint of the atmospheric transport model or other variational methods optimizes a state vector of any dimension by avoiding explicit construction of the full Jacobian matrix \mathbf{K} and may use various procedures to estimate $\hat{\mathbf{S}}$ (Bousserez et al., 2015; Cho et al., 2022). Analytical solution provides a closed-form expression for $\hat{\mathbf{S}}$ but requires the computationally expensive construction of \mathbf{K} column-by-column with n perturbation runs of the atmospheric transport model. This limits the dimension and hence the resolution of the state vector that can be optimized. However, once \mathbf{K} has been constructed, inversion ensembles can be conducted at no significant added computational cost to explore uncertainties in inversion parameters or to examine the complementarity and consistency of different observation subsets such as from different satellite instruments or from ground-based sites (Lu et al., 2021, 2022). This includes optimization of the regularization parameter γ so that the sum of prior terms in the posterior cost function matches the expected value from the chi-square distribution, $J_A(\hat{\mathbf{x}}) = (\hat{\mathbf{x}} - \mathbf{x}_A)^T \mathbf{S}_A^{-1} (\hat{\mathbf{x}} - \mathbf{x}_A) \sim n$ (Lu et al., 2021). Increasing access to large computational clusters has facilitated the construction of \mathbf{K} as an embarrassingly parallel problem, enabling analytical solution for state vectors with $n > 1000$ (Maasakkers et al., 2019). Nesser et al. (2021) show that even larger dimensions can be accessed by approximating the Jacobian along leading patterns of information content.

Figure 5 illustrates the inversion of TROPOMI observations with a 1-month example for the Permian Basin using an analytical solution with $0.25^\circ \times 0.3125^\circ$ ($\approx 25 \times 25 \text{ km}^2$) resolution. This calculation was done on the Amazon Web Services (AWS) cloud with the Integrated Methane Inversion (IMI) open-access facility for analytical inversions of TROPOMI data, enabling users to directly access the TROPOMI data archived on AWS and infer emissions for their selected domain and time window of interest with pre-compiled inversion code (Varon et al., 2022).

The assumption of Gaussian error pdfs for prior emission estimates in Eq. (2) may not always be appropriate. A log-normal distribution is often more correct (Yuan et al., 2015) and can be accommodated in analytical inversions (Maasakkers et al., 2019; Z. Chen et al., 2022). Brandt et

al. (2016) show that the log-normal distribution still underestimates the heavy tail of the frequency distribution of point sources (the super-emitters). Application of inverse methods to detect and quantify individual super-emitters within a source region (such as an oil and gas field) may require a bimodal pdf for prior estimates, and an L1 norm cost function may be better suited than the standard L2 norm of Eq. (2) (Cusworth et al., 2018). A Markov chain Monte Carlo (MCMC) method for the inversion as used by Western et al. (2021) enables the specification of any prior and observational error pdfs and returns the full posterior error pdf on emissions, but it is computationally expensive and its cost increases rapidly as n increases.

The inversion typically optimizes a geographical 2-D array of emission fluxes, but quantifying emissions by source sector is often of ultimate interest. Sectoral information is generally contained in the prior inventory. The simplest approach is to assume that the posterior-to-prior emissions ratio for a given grid cell applies equally to all emissions in that grid cell (Turner et al., 2015) or in a manner weighted by the prior uncertainties of the different sectors (Shen et al., 2021). The posterior error covariance matrix $\hat{\mathbf{S}}$ and averaging kernel matrix \mathbf{A} on the 2-D grid can similarly be mapped to specific sectors and/or be summed over a domain such as an individual country (Maasakkers et al., 2019). A more general approach for sectoral attribution introduced by Cusworth et al. (2021c) maps the $(\hat{\mathbf{x}}, \hat{\mathbf{S}})$ solution onto any alternative state vector \mathbf{z} (such as sector-resolved emissions) with its own prior information $(\mathbf{z}_A, \mathbf{Z}_A)$ to obtain a solution $\hat{\mathbf{z}}$ with posterior error covariance matrix $\hat{\mathbf{Z}}$. This specifically allows for comparisons of results from inversions using different prior information.

4.2 Quantification of point sources with point source imagers

Quantification of point sources from satellite observations of instantaneous plumes poses a different kind of inversion problem. In this case, a single quantity, the point source rate Q [kg s^{-1}], is to be inferred from a single observation of the plume. Figure 3 showed examples of plume observations. The morphology of the instantaneous plume is determined by turbulent diffusion superimposed on the mean wind, with a plume boundary (commonly called the plume mask) defined by the detection limit of the instrument. The observation is of the total methane column and so is relatively insensitive to vertical boundary layer mixing, which is a major source of error in interpreting plumes from in situ aircraft observations (Angevine et al., 2020). On the other hand, unlike for in situ aircraft observations, there is no direct measurement of the wind speed U in the plume. The lack of precise wind speed information is a major source of error for interpreting satellite observations because concentrations in the plume vary as the ratio Q/U , meaning that errors in U propagate proportionally to errors in Q .

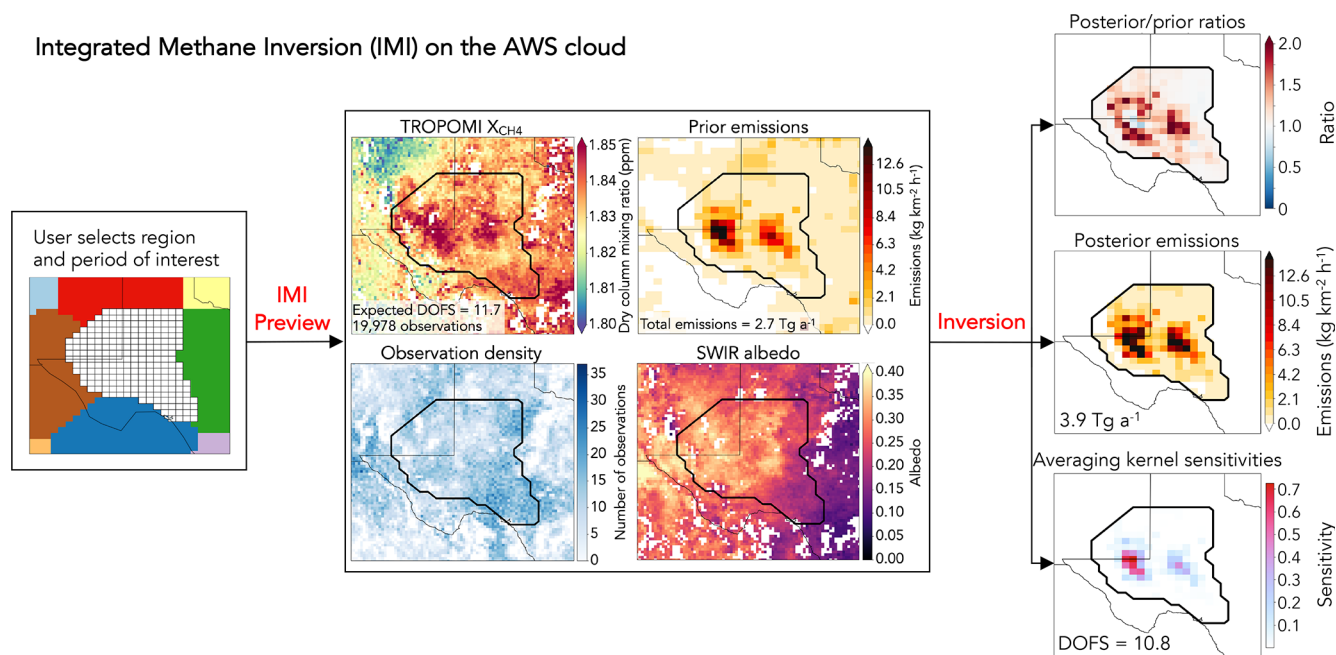


Figure 5. Integrated Methane Inversion (IMI) on the Amazon Web Services (AWS) cloud (Varon et al., 2022). The IMI accesses the TROPOMI operational data posted on the cloud and carries out analytical inversions for user-selected domains and time periods. Before conducting the inversion, users can run an IMI preview to visualize the observations, the default prior emission estimates (to which they can substitute their own), the expected information content of the inversion (degrees of freedom for signal or DOFS), and the SWIR albedos for indication of data artifacts. If the preview is satisfactory, they can then run the inversion to generate posterior emission estimates with averaging kernel sensitivities indicating where the observations can successfully constrain emissions. Shown here is an example given by Varon et al. (2022) for a 1-month (May 2018) inversion over the Permian Basin, using the prior emission estimate from the EDF inventory (Zhang et al., 2020). The IMI is accessible at <https://imi.seas.harvard.edu> (last access: 23 July 2022).

Figure 6 summarizes different methods for inferring point source rates from satellite observations of instantaneous plumes. Details on these methods are given by Krings et al. (2011), Varon et al. (2018), and Jongaramrungruang et al. (2019, 2022). The Gaussian plume is the classic model for turbulent diffusion from a point source, but it is valid only for a plume sampling a representative ensemble of turbulent eddies. Methane plumes are generally too small for this condition to be met (Jongaramrungruang et al., 2019), as illustrated in Fig. 3 where the plume shapes are not Gaussian. A simple mass balance method applying the local wind speed to the methane enhancement observed in the plume is flawed for sub-kilometer scales because ventilation is determined by turbulent eddies more than by the mean wind (Varon et al., 2018).

The Gauss theorem method, in which the source rate is calculated as the outward flux summed along a contour surrounding the point source, is extensively used for in situ aircraft observations where concurrent measurements of wind vector and methane concentration are available to calculate the local flux as the aircraft circles around the source (Hainy et al., 2019). In the absence of in situ wind data, one can apply a single estimate of the wind vector based on local station or assimilated data (Krings et al., 2011). However, the calcu-

lation then does not account for the contribution of turbulent diffusion to the outward flux. In addition, any sources within the contour will alias into the inferred point source rate.

Two successful methods to derive point source rates from observations of instantaneous plumes have been the cross-sectional flux (CSF) method (White, 1976; Krings et al., 2011), in which the source rate is inferred from the product of the methane enhancement and the wind speed integrated across the plume width, and the integrated mass enhancement (IME) method (Frankenberg et al., 2016; Varon et al., 2018), in which the total mass enhancement in the plume is related to the magnitude of emission with a parameterization dependent on wind speed. Both methods are widely applied to the retrieval of point source rates from satellite observations and they yield consistent results (Varon et al., 2019). The CSF method is more physically based, and source rates can be derived from cross sections at different distances downwind to reduce error (Fig. 6). The contribution of turbulent diffusion to the flux can be neglected in the direction of the wind following the slender plume approximation (Seinfeld and Pandis, 2016). However, the dependence on wind direction is an additional source of error relative to the IME method.

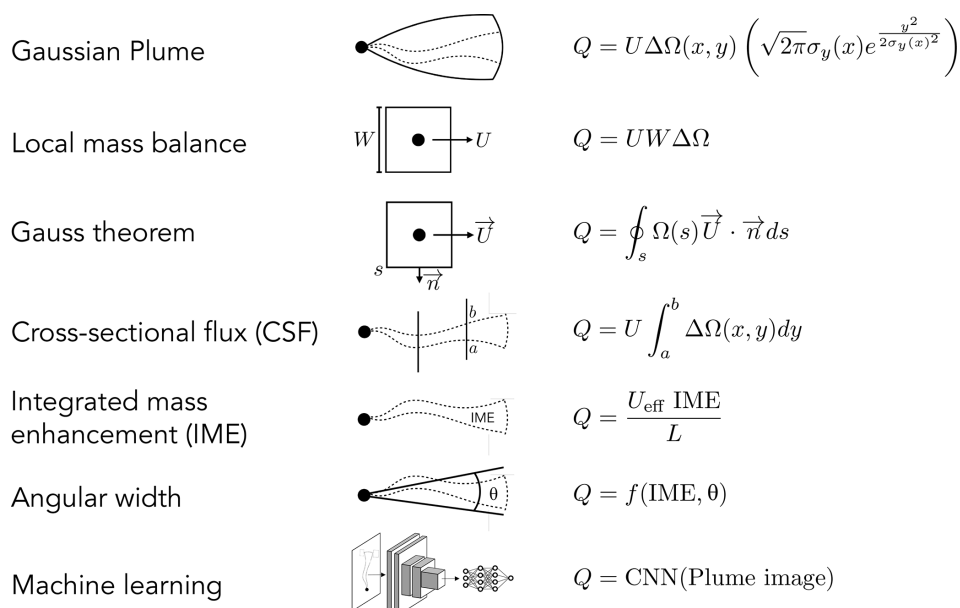


Figure 6. Seven different methods for inferring point source rates Q [kg s^{-1}] from satellite observations of instantaneous plumes of methane column enhancements $\Delta\Omega$ [kg m^{-2}] relative to background. The methods involve (1) fit to a Gaussian plume, (2) local mass balance for near-source pixels, (3) Gauss theorem with integration of the outward flux along a closed contour s , (4) cross-sectional flux (CSF) integral, (5) integrated mass enhancement (IME) with independent wind speed information, (6) IME with wind speed inferred from the plume angular width θ , and (7) machine learning applying a convolution neural network (CNN) to the plume image. Methods (1), (2), (4), and (5) are described by Varon et al. (2018); method (3) is described by Krings et al. (2011); method (6) is described by Jongaramrungruang et al. (2019); and method (7) is described by Jongaramrungruang et al. (2022). In the equations, x denotes the plume axis for transport by the mean wind and y denotes the horizontal axis normal to the wind. The IME [kg] is the spatial integral of the methane column enhancement $\Delta\Omega$ over the plume mask. The wind speed U is that relevant to transport of the plume, and in the IME method (4) it is parameterized as an effective wind speed U_{eff} to include the effect of turbulent diffusion. The Gauss theorem and CSF methods require wind direction information. The IME method (4) requires a characteristic plume size L that can be taken as the square root of the plume area (Varon et al., 2018) or the radial plume length (Duren et al., 2019). The empirical dispersion parameter σ_y [m] in the Gaussian plume method (1) characterizes the spread of the plume. \vec{n} in the Gauss theorem method is the unit vector normal to the contour.

Both the CSF and IME methods require estimates of wind speed relevant to plume transport. For the CSF method this is the mean wind speed over the vertical depth of the plume, which can be parameterized from the 10 m wind speed (Varon et al., 2018) or interpolated from a database of wind speed vertical profiles (Krings et al., 2011). The effective wind speed U_{eff} in the IME method accounts for the effect of turbulent diffusion in plume dissipation and can be parameterized as a function of an observable 10 m wind speed by using large-eddy simulations (LES) of synthetic plumes sampled with the instrument pixel resolution, plume mask definition, and observing time of day (Varon et al., 2018). The need for independent information on wind speed, either from measurements at the point source location or from a meteorological database, can dominate the error budget in inferring source rates from the CSF and IME methods, and typically limits the precision to 30 % (Varon et al., 2018). The error is larger for weak winds, which tend to be more variable and smaller for strong steady winds. However, plumes are less likely to be detectable in strong winds because of

dilution. Weak winds are thus favorable for plume detection but can induce large error in source quantification.

Jongaramrungruang et al. (2019) showed that the morphology of an observed plume contains information on wind speed, as long slender plumes are associated with high wind speeds while short stubby plumes are associated with low wind speeds. By using the plume angular width as a measure of wind speed, they were able to infer source rates without independent wind information. Jongaramrungruang et al. (2022) developed that idea further with a convolutional neural network (CNN) approach trained on LES plume images to learn the source rate from the 2-D plume structure. Application to synthetic plumes, as would be sampled by the AVIRIS-NG aircraft instrument at 1–5 m pixel resolution, showed a mean precision of 17 % and a detection threshold of 50 kg h^{-1} over spectrally homogeneous surfaces. This method has not yet been applied to satellite observations where coarser pixels would result in lower sensitivity and where retrievals are more subject to artifacts.

5 Detection thresholds

5.1 Area sources

Here we examine the ability of area flux mappers to detect total methane emission fluxes from a target domain with a desired spatial resolution. This can involve repeated observations of the domain over multiple passes to increase precision and observation density, as illustrated in Fig. 3. The observation time required to detect a desired flux threshold at a desired spatial resolution then depends on the instrument precision, the spatial coverage, the fraction of successful retrievals, the pixel size, the variability of emissions, and the return time.

Following the conceptual model of Jacob et al. (2016), the methane column enhancement ΔX [ppb] resulting from a uniform emission flux E [$\text{kg km}^{-2} \text{h}^{-1}$] over a square domain of dimension W [km] is given by

$$\Delta X = \alpha E W, \quad (3)$$

with a scaling coefficient $\alpha = (M_a/M_{\text{CH}_4})g/pU$ where M_a and M_{CH_4} are the molecular weights of dry air and methane, g is the acceleration of gravity, p is the surface pressure, and U is the wind speed for ventilation of the domain. With the units above and assuming $p = 1000$ hPa and $U = 5$ km h^{-1} , we have $\alpha = 4.0 \times 10^{-2}$ ppb km h kg^{-1} . An instrument with pixel-level precision σ_I [ppb] can detect this emission flux with a single measurement if $\Delta X \gg \sigma_I$, but this is often not the case. Spatial and temporal averaging of observations improves the effective precision, and this improvement goes as the square root of the number of observations if the error is random, uncorrelated, and representatively sampled (IID conditions). The time required for detecting the mean emission flux E over a domain of dimension W with a signal-to-noise ratio of 2 is then given by

$$t = t_R \max \left[1, \frac{1}{FN} \max \left(1, \left[\frac{2\sigma}{\Delta X} \right]^2 \right) \right], \quad (4)$$

where t_R is the return time of the instrument (time interval between successive passes), N is the number of observations within the domain per individual pass for instrument pixel sizes D smaller than W (for continuous mapping and square pixels, we have $N = (W/D)^2$), F is the fraction of successful retrievals, and σ [ppb] is the variability that results from both the instrument precision and the spatial variability $\sigma_X(D, W)$ of the enhancement ΔX sampled by the pixels within the domain:

$$\sigma = \sqrt{\sigma_I^2 + \sigma_X(D, W)^2}. \quad (5)$$

Equations (3)–(5) provide a simple conceptual framework for evaluating the ability of area flux mappers to detect regional emissions of a certain magnitude and with a desired spatial resolution. For illustration purposes, consider an objective to detect emissions at either 100 or 10 km resolution.

In the gridded version of the methane emission inventory from the US Environmental Protection Agency (Maasakkers et al., 2016), 75 % of total national anthropogenic emissions are contributed by $0.1^\circ \times 0.1^\circ$ ($\approx 10 \times 10 \text{ km}^2$) grid cells with emission flux $E > 0.5 \text{ kg km}^{-2} \text{ h}^{-1}$, and 30 % are contributed by grid cells with $E > 5 \text{ kg km}^{-2} \text{ h}^{-1}$ (Jacob et al., 2016). Shen et al. (2022) find a mean emission of 0.18 Tg yr^{-1} for 12 major oil and gas production basins in the US EPA inventory, which for a typical basin scale of $200 \times 200 \text{ km}^2$ corresponds to a mean emission flux of $0.5 \text{ kg km}^{-2} \text{ h}^{-1}$. Taking $E = 0.5 \text{ kg km}^{-2} \text{ h}^{-1}$ as a desired flux detection threshold on a 100 km scale, or alternatively $E = 5 \text{ kg km}^{-2} \text{ h}^{-1}$ as a desired flux detection threshold on a 10 km scale, we find from Eq. (3) a mean enhancement $\Delta X = 2.0$ ppb. Instrument precisions for the flux mappers in Table 1 are in the range 3–15 ppb, and we assume that σ_X is small in comparison. We further assume $F = 0.24$ for instruments operating at $1.65 \mu\text{m}$ by analogy with GOSAT using the CO_2 proxy method (mainly limited by cloud cover) and $F = 0.03$ for instruments operating at $2.3 \mu\text{m}$ by analogy with TROPOMI (limited by both cloud cover and spectrally inhomogeneous surfaces). Other instrument properties are taken from Table 1.

Table 3 shows the results of this illustrative calculation. In the 100 km resolution case we find that TROPOMI requires a 4-week averaging period, limited by the small fraction of successful retrievals. GOSAT-GW requires 18 d in global viewing mode, as the greater fraction of successful retrievals is offset by coarser pixels and 3 d return time. It requires only one pass in target mode. MethaneSAT requires a single pass and is limited by its 3 d return time. Sentinel-5 requires 5 d, much shorter than TROPOMI despite coarser pixels because it uses the $1.65 \mu\text{m}$ band. GeoCarb requires only 3 d because of its twice-daily observations. CO2M requires only a single pass and is limited by its 5 d return time. In the 10 km resolution case, we find that only MethaneSAT has an averaging time of less than a week, with GOSAT-GW requiring 18 d in target mode (limited by its lower instrument precision) and other instruments requiring several months or more. However, both MethaneSAT and GOSAT-GW in target mode only cover limited domains ($200 \times 200 \text{ km}^2$ for MethaneSAT).

The above conceptual model is crude and overoptimistic, assuming ideal reduction of errors and uncorrelated retrieval success across instrument pixels, ignoring variable bias, and taking instrument specifications from Table 1 at face value, but it is useful for intercomparing instruments and it highlights critical variables determining detection thresholds for different applications. The advantage of the $1.65 \mu\text{m}$ band is readily apparent because it achieves a much higher success rate through the CO_2 proxy retrieval. The MethaneSAT instrument with high precision and small pixels is most useful for quantifying fluxes at high spatial resolution. For coarser resolutions, return time and spatial coverage can be more important considerations.

Table 3. Averaging time requirements for regional source detection by area flux mappers^a.

Instrument	Averaging time	
	$E = 0.5 \text{ kg km}^{-2} \text{ h}^{-1}$, $100 \times 100 \text{ km}^2$	$E = 5 \text{ kg km}^{-2} \text{ h}^{-1}$, $10 \times 10 \text{ km}^2$
TROPOMI	28 d	> 1 year
<i>GOSAT-GW</i>	18 d (global), 3 d (target)	18 d (target)
<i>MethaneSAT</i>	3 d	5 d
<i>Sentinel-5</i>	5 d	> 1 year
<i>GeoCarb</i>	3 d	1 year
<i>CO2M</i>	5 d	120 d

^a Illustrative calculation using the conceptual model of Eqs. (3)–(5) applied to the detection of an emission flux averaging $0.5 \text{ kg km}^{-2} \text{ h}^{-1}$ over a desired spatial resolution of $100 \times 100 \text{ km}^2$, or $5 \text{ kg km}^{-2} \text{ h}^{-1}$ over a desired spatial resolution of $10 \times 10 \text{ km}^2$. See the text for details and Table 1 for the specifications of the different instruments. Results for GOSAT-GW are given for both global and target viewing modes. Instruments not yet launched are in italics.

5.2 Point sources

In the case of point source imagers, the detection threshold applies to single-pass observations of the plumes. Table 4 lists point source detection thresholds reported in the literature for different instruments. Detection thresholds are defined by the ability to determine the plume mask against a noisy background and to retrieve the corresponding emissions. The detection thresholds for a given instrument depend strongly on surface type and are lowest for bright, spectrally homogeneous surfaces. They also depend on wind speed, which complicates the definition of detection threshold because weak winds facilitate detection but cause large error in quantification (Varon et al., 2018). The best range of wind speeds to allow both detection and quantification is $2\text{--}5 \text{ m s}^{-1}$ (Varon et al., 2018). Sherwin et al. (2022) conducted a series of controlled release experiments under those favorable surface and wind conditions and confirmed the ability of GHGSat to quantify emissions down to 200 kg h^{-1} and Sentinel-2, Landsat-8, PRISMA, and WorldView-3 to quantify emissions down to the $1400\text{--}4000 \text{ kg h}^{-1}$ range.

For a given surface and wind speed, the main instrument predictors of point source detection threshold are spatial resolution, spectral resolution, and precision. Finer spatial resolution decreases the dilution of the plume enhancements over the pixel area, thus increasing the magnitude of the enhancements within plume pixels and facilitating detection. An airborne imaging spectrometer observing from low altitude such as AVIRIS-NG (with spatial resolution of $1\text{--}8 \text{ m}$ depending on aircraft altitude) is thus much more sensitive than satellite instruments with similar spectral resolution. Higher spectral resolution increases precision and reduces the aliasing of surface spectral features into the methane retrieval (Cusworth et al., 2019; Jongaramrungruang et al., 2021). For hyperspectral and multispectral instruments, the spectral positioning of the bands relative to the methane absorption lines is also important (Scaffuto et al., 2021; Sanchez-Garcia et al., 2022). Precision depends on other instrument properties beyond spectral resolution and positioning, including the capability of pointing to specific targets to increase the SNR

through longer sample collection. Pointing is how GHGSat achieves a combination of high spatial and spectral resolution.

The detection thresholds in Table 4 are not strictly comparable between instruments because they reflect different levels of evidence. One may still usefully classify the instruments by order-of-magnitude thresholds of ~ 100 , ~ 500 , and $\sim 1000\text{--}10\,000 \text{ kg h}^{-1}$ (Fig. 4). Instruments in the $\sim 100 \text{ kg h}^{-1}$ class include GHGSat, WorldView-3, and Carbon Mapper. A typical point source imager with spatial resolution $\sim 30 \text{ m}$ requires spectral resolution of 5 nm or better to fit into this class (Cusworth et al., 2019), though WorldView-3 can achieve this class for bright spectrally homogeneous surfaces through its combination of very high spatial resolution ($3.7 \times 3.7 \text{ m}^2$) and favorable spectral positioning (Sanchez-Garcia et al., 2022).

Instruments in the $\sim 500 \text{ kg h}^{-1}$ class include the land hyperspectral sensors (PRISMA, EnMAP, EMIT) and MethaneSAT. The land hyperspectral sensors have $\sim 30 \text{ m}$ spatial resolution and achieve this class with 10 nm spectral resolution in the $2.3 \mu\text{m}$ band, enabling either a full-physics or matched filter retrieval. MethaneSAT will have coarser $130 \times 400 \text{ m}^2$ spatial resolution but higher precision enabled by 0.3 nm spectral resolution in the $1.65 \mu\text{m}$ band, with the added benefit of allowing a CO_2 proxy retrieval to minimize artifacts.

Instruments in the $1000\text{--}10\,000 \text{ kg h}^{-1}$ class include the multispectral land sensors Sentinel-2 and Landsat with $20\text{--}30 \text{ nm}$ spectral resolution and a single measurement in the $2.3 \mu\text{m}$ band to allow a simple Beer's law retrieval. TROPOMI can detect extremely large point sources or clusters of sources ($> 25\,000 \text{ kg h}^{-1}$) over its $5.5 \times 7 \text{ km}^2$ pixels (Lauvaux et al., 2022), though coarse spatial resolution hinders source identification.

The relevance of measuring individual point sources at these different thresholds can be assessed by considering their contributions to total emissions. Cusworth et al. (2022) find on average that 40 % of emissions from US oil and gas fields originate from point sources $> 10 \text{ kg h}^{-1}$ detectable by

Table 4. Point source detection thresholds for different satellite instruments^a.

Instrument	Detection threshold (kg h ⁻¹)	Reference
TROPOMI	25 000 ^b	Lauvaux et al. (2022)
Sentinel-2, Landsat-8/9	1800–25 000 ^c	Varon et al. (2021); Ehret et al. (2022); Irakulis-Loitxate et al. (2022a)
PRISMA	500–2000 ^d	Guanter et al. (2021)
<i>MethaneSAT</i>	500	Christopher Chan Miller, Harvard University, personal communication, 2022.
GHGSat-D	1000–3000	Jervis et al. (2021)
GHGSat-C1, C2	100–200 ^e	Gauthier (2021)
<i>Carbon Mapper</i>	50–200 ^f	Duren (2021)
WorldView-3	< 100	Sanchez-Garcia et al. (2022)
AVIRIS-NG (aircraft) ^g	2–10 ^h	Duren et al. (2019)

^a The detection thresholds are as reported in the references and are generally for favorable winds (< 5 m s⁻¹) and favorable surfaces (bright and spectrally homogeneous) unless otherwise indicated. As pointed out in the text, weak winds are favorable for detection but not for quantification, and this places some ambiguity in the definition of detection threshold. Specifications for each instrument are in Table 1. Instruments that are yet to be launched are in italics.

^b From an ensemble of 1800 observed detections for TROPOMI 5.5 × 7 km² pixels. The pixels may contain multiple point sources.

^c Observations over surfaces ranging from bright and homogeneous (Sahara) to highly heterogeneous (farmland).

^d From LES synthetic plumes and observations over surfaces ranging from Sahara (bright homogeneous surfaces) to Shanxi Province in China (darker more heterogeneous surfaces with significant terrain).

^e Verified by controlled releases (MacLean, 2021; Sherwin et al., 2022).

^f 50 kg h⁻¹ in target mode with pointing and 200 kg h⁻¹ in push-broom mode.

^g Airborne imaging spectrometer with spectral resolution of 5 nm and pixel resolution of 1–8 m depending on aircraft altitude (Thorpe et al., 2017).

^h Observations in California with range determined by surface brightness.

AVIRIS-NG. Figure 7 shows the cumulative frequency distributions (CFDs) by number and total emission of point sources larger than 10 kg h⁻¹ sampled by airborne remote sensing over California and over US oil and gas fields (Duren et al., 2019; Cusworth et al., 2022). Results are shown for individual campaigns and for the combined CFD with equal weighting between campaigns. A satellite instrument with detection threshold of 100 kg h⁻¹ could detect 50%–95% of point sources depending on the region (80% in the combined data set), contributing 75%–99% of point source emissions (95% for the combined data set). An instrument with detection threshold of 1000 kg h⁻¹ could detect 0%–15% of point sources (5% for the combined data set), contributing 0%–55% of point source emissions (30% in the combined data set). Brandt et al. (2016) find that sources in the 10–100 kg h⁻¹ range contribute 20% of emissions from point sources > 10 kg h⁻¹ in their survey of emissions from US oil and gas fields. The data set of Fig. 7 includes only a few emitters in the ~ 10 000 kg h⁻¹ range. Global statistics of aircraft and satellite data suggest a power law frequency distribution of point source emissions with ~ 100× fewer sources at 10 000 kg h⁻¹ than at 1000 kg h⁻¹ (Ehret et al., 2022; Lauvaux et al., 2022). These so-called ultra-emitters could still contribute significantly to total emissions in some regions.

6 Observing system completeness

Here we introduce the concept of observing system completeness as the capability of an instrument (or ensemble of instruments) to fully quantify their target emissions within a selected domain and time window. For area flux mappers the target would be the total methane emissions within the do-

main at a desired spatial resolution, while for point source imagers the target would be the total emissions within the domain contributed by point sources larger than 10 kg h⁻¹.

6.1 Observing system completeness for area flux mappers

Observations from area flux mappers are generally used to infer 2-D distributions of total emissions over a regional domain of interest by Bayesian inference. The observing system completeness is then defined by the DOFS (Sect. 4.1 and Fig. 5). Given n state vector elements of emissions on the 2-D grid, the DOFS tell us how many of those elements are quantified by the observations, and the averaging kernel sensitivities (diagonal terms of the averaging kernel matrix, adding up to the DOFS) give that information for the individual state vector elements.

As pointed out by Nesser et al. (2021) and Varon et al. (2022), it is possible to roughly estimate the DOFS of an observing system for a selected domain and time period without doing any actual forward model calculations. Consider a domain divided into n emission state vector elements of individual dimension W [km], sampled with an instrument providing m successful observations over the domain in the selected time period. Let σ_A be the mean prior error standard deviation for the individual state vector elements and σ_O the mean observational error standard deviation. The DOFS can then be estimated as

$$\text{DOFS} = \frac{n \sigma_A^2}{\sigma_A^2 + \frac{(\sigma_O/k)^2}{m}}, \quad (6)$$

where $k = \Delta X/E$ [ppb km² h kg⁻¹] is the Jacobian matrix element that relates the column mixing ratio enhance-

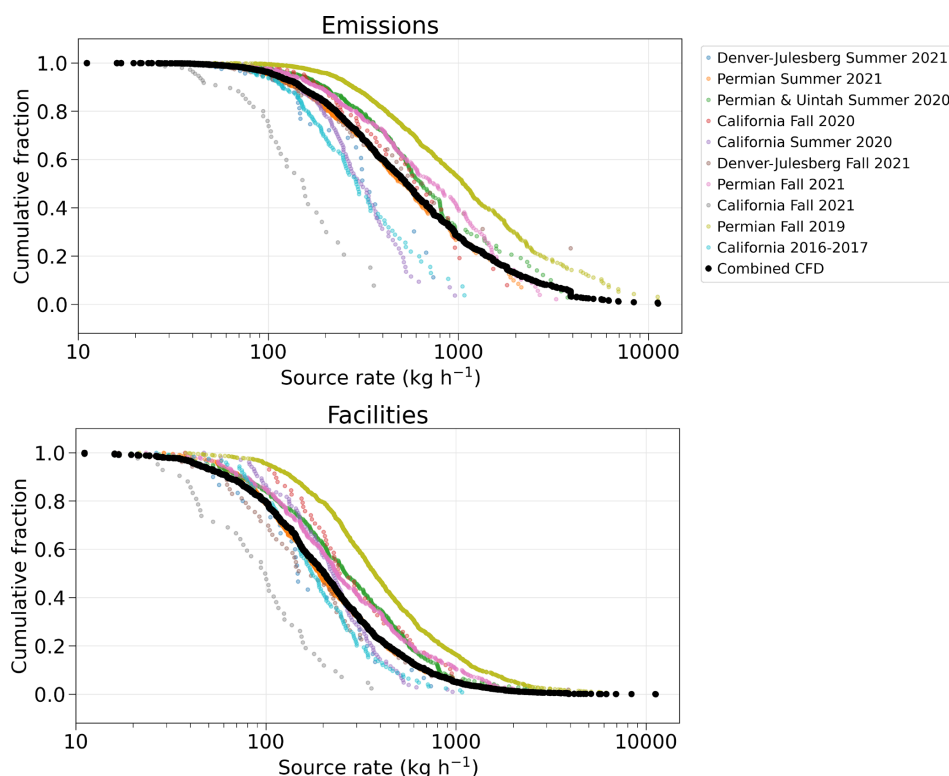


Figure 7. Cumulative frequency distributions (CFDs) of point source rates above 10 kg h^{-1} for 3879 point sources detected by airborne remote sensing in California and in US oil and gas basins by Duren et al. (2019) and Cusworth et al. (2022). Many of the individual point sources were detected multiple times, and the values entered in the frequency distributions are the averages of these detections not including non-detection events; they thus represent the average emission from the source when on, as is relevant to the definition of the instrument detection threshold C_D in Eq. (8). The colored curves are for individual campaigns, and the black curve is the combined CFD for all regions with equal weighting per campaign. The top panel gives the cumulative fraction of emissions contributed by detected point sources above a given rate, and the bottom panel gives the cumulative fraction of the number of point sources. For example, a satellite instrument with detection threshold of 100 kg h^{-1} could detect 80 % of the point sources in the combined CFD, contributing 95 % of total point source emissions. An instrument with detection threshold of 1000 kg h^{-1} could detect 5 % of the point sources in the combined CFD, contributing 30 % of total point source emissions.

ment ΔX [ppb] over a state vector element to the emission flux E [$\text{kg km}^{-2} \text{ h}^{-1}$] for that element. Following Nesser et al. (2021), we can approximate k with a simple mass balance model as

$$k = \eta \frac{M_a}{M_{\text{CH}_4}} \frac{W g}{U p}, \quad (7)$$

where η is a coefficient to account for turbulent diffusion. Nesser et al. (2021) and Varon et al. (2022a) find that $\eta = 0.4$ is a suitable value for W in the range 25–100 km. Further assuming $U = 5 \text{ km h}^{-1}$ and $p = 1000 \text{ hPa}$, we obtain $k = 1.4 \times 10^{10} W$ [$\text{ppb km}^2 \text{ h kg}^{-1}$]. The mean prior error standard deviation can be estimated as $\sigma_A = f Q_A / (n W^2)$, where Q_A is the total prior estimate of emission in the domain [kg h^{-1}] and f is the fractional error (such as 50 %). For the example of Fig. 5 with a 1-month inversion of TROPOMI observations over the Permian Basin, Varon et al. (2022) find that this rough estimate prior to doing the inversions yields a DOFS of 11.7, close to the value of 10.8 found in the actual inversion.

The simple estimate of DOFS in Eq. (6) yields basic insights into the factors affecting observing system completeness for an area flux mapper. Instrument precision and number of observations (or observation density for a given area) are critical. The bar for the observations to improve on the prior estimate depends on the estimated error for that prior estimate (smaller prior error means a higher bar for the observations). Increasing the requirement on spatial resolution (large n , small W) leads to smaller absolute prior errors for individual state vector elements and in turn raises the requirement on the precision and number of observations.

6.2 Observing system completeness for point source imagers

Observing system completeness for a point source imager (or a constellation) can be defined as its ability to quantify total emissions from point sources larger than 10 kg h^{-1} over a selected domain and time window. Such completeness in

observation of point sources is important not only for complementing the information from area flux mappers but also for leak detection and repair (LDAR) programs where regularly surveying point sources in a region can enable prompt action to fix malfunctioning equipment (Kemp et al., 2016; Fox et al., 2021). Current LDAR programs rely on a combination of ground surveys, drones, and aircraft, but we will see that satellites have an important role to play.

Let $C \in [0, 1]$ denote the observing system completeness for point sources as the fraction of total point source emissions larger than 10 kg h^{-1} within a domain and time window that can be detected by a given instrument (or constellation of instruments). C is limited by a combination of the instrument detection threshold (C_D), spatial coverage (C_S), and temporal sampling (C_T):

$$C = C_D \times C_S \times C_T. \quad (8)$$

Here C_D is the fraction of point source emissions that can be detected on the basis of the instrument's detection threshold, as inferred for example from Fig. 7. C_S is the fraction of the domain that the instrument observes at least once within the time window. If there is full spatial coverage within the time window, $C_S = 1$. $C_T = 1 - (1 - Fp)^N$ is the probability for an observed source to be actually detected within the time window given the number $N \geq 1$ of observations in the window, the source persistence p (fraction of time that the source is emitting above the detection threshold), and the fraction F of successful retrievals, taken here as the fraction of clear-sky observations. For example, an intermittent source with $p = 0.2$ that is observed with a 1-week return time and 30 % clear skies would have $C_T = 0.96$ for 1 year of observations but $C_T = 0.23$ for 1 month. If spatial coverage and observing frequency are sufficient, C is limited by the instrument's detection threshold (C_D). If they are not (and depending on source persistence and cloud cover), C_S and C_T may limit observation system completeness rather than C_D .

Figure 8 shows the frequency distribution of persistence (p) for 2500 oil and gas point sources detected and quantified by the airborne AVIRIS-NG and Global Airborne Observatory instruments in US field campaigns (Cusworth et al., 2022). The left panel shows the frequency distribution of mean emissions from individual point sources for each persistence bin. From there we can estimate the observing system completeness for any instrument on the basis of its detection threshold, spatial coverage, and return time. The right panel plots the resulting cumulative observing system completeness for the ensemble of 2500 point sources as achieved by either (1) an airborne instrument with 10 kg h^{-1} detection threshold and bi-monthly (60 d) sampling interval or (2) a satellite instrument with 100 kg h^{-1} detection threshold and bi-weekly (14 d) sampling interval. The calculation is done for a 1-year time window with 30 % clear skies, assuming $C_S = 0.95$ in both cases, and the cumulative results are shown across the range of persistence bins. We see in

this example that the two observing systems have comparable success for persistent sources ($p > 0.5$) by trading C_D for C_T , but the satellite system is better for intermittent sources ($p < 0.5$), despite its higher detection threshold, because of the greater benefit from frequent observations.

Figure 9 further illustrates the trade space between detection threshold and return time for determining observing system completeness. Results are for the ensemble of 2500 point sources with statistics given in Fig. 8. We see from Fig. 9 that an observing system completeness of 0.6 can be achieved by an instrument with a detection threshold of 300 kg h^{-1} sampling weekly. Such an instrument performs as well as one with low detection threshold but sampling only every 2 months. Achieving an observing system completeness higher than 0.8 requires an instrument with detection threshold better than 150 kg h^{-1} that samples at least biweekly.

Our calculation of C_T as presented above assumes that a point source follows a binary emission frequency distribution (on/off) with constant emissions when on. Actual sources have more complex variability (Allen et al., 2022; Zimmerle et al., 2022). Similar to the analysis of Sect. 5.1, a simple analysis can be done by assuming Gaussian statistics following Hill and Nassar (2019) to estimate the number N of observations needed to quantify a mean point source emission rate $(1 \pm \delta)Q$ with relative precision of δ defined by the 95 % relative confidence interval:

$$N = \frac{1}{Fp} (1.96 \frac{\sigma}{\delta})^2, \quad (9)$$

$$\sigma = \sqrt{\sigma_I^2 + \sigma_S^2}. \quad (10)$$

Here σ is the standard deviation of individual measurements determined by instrument precision (σ_I) and variability in the source (σ_S). Using statistics from airborne surveys in the Permian Basin, we find that 71 observations per year (roughly 5 d return time, assuming 30 % clear skies) would be required to estimate annual point source emissions from that highly intermittent population within 50 % ($p = 0.24$, $\sigma_I = 36\%$, $\sigma_S = 45\%$; Cusworth et al., 2021b). Increasing the required annual emission precision to 35 % would require 145 observations per year (2 d return time). For a less intermittent population ($p = 0.5$), we find $N = 43$ (8 d return time) to achieve 50 % precision and $N = 87$ (4 d return time) to achieve 35 % precision. These observing frequencies can be achieved with a satellite constellation but would be challenging for an airborne program.

The tails of the pdfs for point source emissions are a particular challenge to sample representatively. The pdfs are generally heavy-tailed, resulting in a low estimate of mean emissions (Zimmerle et al., 2022), which may be addressed with very dense sampling (Y. Chen et al., 2022) or with supporting observations from area flux mappers. Persistence is defined in the observations by the frequency of occurrence of emissions above the detection threshold, but non-detection could

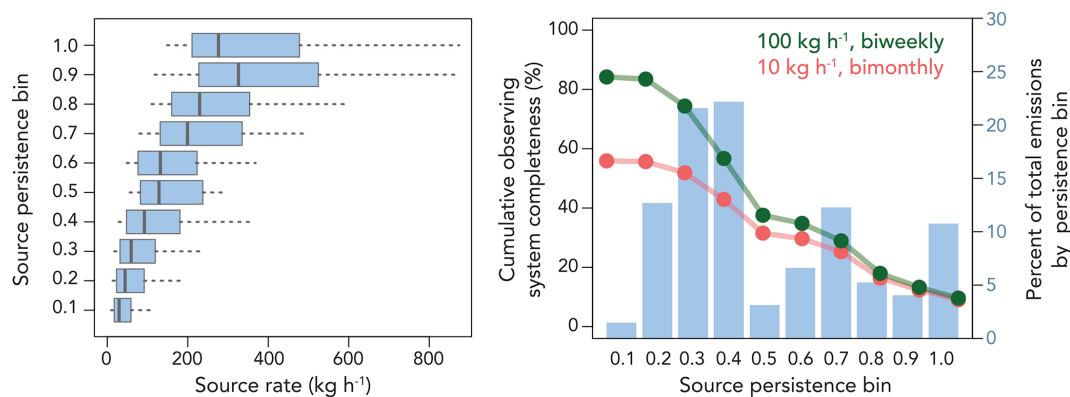


Figure 8. Point source rates, persistence, and observing system completeness for an ensemble of 2500 oil and gas point sources sampled by aircraft remote sensing in five US oil and gas basins (Cusworth et al., 2022). The left panel shows the frequency distribution of mean point source rates for different persistence bins (p , fraction of the time that the source is detected), where the mean is computed by assuming zero emission when no plume is detected. Boxes and whiskers indicate 10th, 25th, 50th, 75th, and 90th percentiles. The right panel shows the percentage of total point source emissions contributed by different persistence bins. Also shown in that panel is the cumulative observing system completeness $C = C_D \times C_S \times C_T$ (Eq. 8) for 1 year of observations under 30 % clear-sky conditions and two observing systems, one with 100 kg h^{-1} detection threshold and bi-weekly sampling (green line) and one with 10 kg h^{-1} and bi-monthly sampling (red line). We assume spatial coverage $C_S = 0.95$ for both. The observing system completeness is computed individually for each basin and then averaged. Both observing systems have comparable performance for sources with high persistence ($p > 0.5$) but the biweekly observing system performs better for sources with low persistence despite its higher detection threshold.

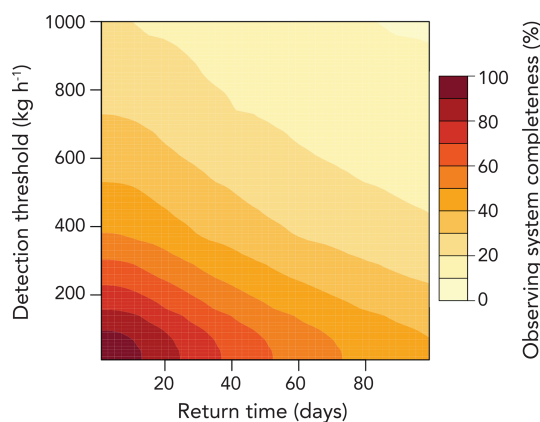


Figure 9. Observing system completeness of a point source imager as a function of detection threshold and return time. The calculation is for the ensemble of point sources in Fig. 8. Observing system completeness for a point source imager is defined here as the ability to quantify emissions from all point sources larger than 10 kg h^{-1} .

represent the low tail of the pdf rather than an on/off switch. The definition of persistence may thus depend on the detection threshold, increasing the importance of that threshold as a measure of observing system completeness. Further complicating matters is that the instrument detection threshold is variable, depending notably on the wind speed at the time of observation. This calls for better characterization of the full pdf of emissions from point sources as a means to extrapolate the observations (Allen et al., 2022).

7 Concluding remarks

Satellite observations of atmospheric methane in the short-wave infrared (SWIR) provide an increasingly powerful system for continuous monitoring of emissions from the global scale down to point sources. We reviewed the current and scheduled fleet of instruments including area flux mappers to quantify total emissions on regional scales and point source imagers to quantify individual source rates. We discussed retrieval methods to infer concentrations from measured radiances, precision and accuracy requirements, inverse methods to infer emissions from observed concentrations, emission detection thresholds, and observing system completeness.

Synergy between different satellite instruments is important to exploit. Area flux mappers can constrain total emissions, while point source imagers provide specific facility-level attribution. Detection of coarse-resolution hotspots by area flux mappers can direct targeted observation by point source imagers to identify the causes (Maasackers et al., 2022b). Point source observations with adequate completeness can improve the bottom-up estimates used as prior information in inversions of area flux mapper data. Constellations of point source imagers can achieve high observing system completeness in support of point source mapping and leak detection and repair (LDAR) programs.

Synergy with suborbital (ground-based and airborne) platforms is essential for a multi-tiered observing strategy (Cusworth et al., 2020). Suborbital observations have a unique role to complement the intrinsic limitations of satellites in terms of spatial resolution, return time, cloud cover, dark surfaces, and nighttime. Surface measurements are typically 10

times more sensitive to local emissions than satellite observations (Cusworth et al., 2018). They can also include correlative chemical information such as isotopes, ethane, and ammonia concentrations (Yuan et al., 2015; Ganesan et al., 2019; Graven et al., 2019; Pétron et al., 2020; Yang et al., 2020).

Correlative chemical information available from satellites needs to be better exploited. Concurrent satellite observations of CO and methane have been used to quantify methane emissions from open fires (Worden et al., 2013) and from cities (Plant et al., 2022) by reference to CO emissions, although this is contingent on an accurate CO emission inventory, and errors in these inventories are often large. GeoCarb will measure methane, CO₂, and CO, offering further application of this method, including the use of methane / CO₂ enhancement ratios. Concurrent enhancements of CO₂ and methane in oil and gas fields observed by the PRISMA instrument, together with nighttime flare data from the VIIRS instrument, have been used to identify flaring point sources and quantify flaring efficiency (Cusworth et al., 2021a). Measurements of ammonia from space (Van Damme et al., 2018) have the potential to identify livestock sources but have not yet been used in combination with methane.

Some methane sources are intrinsically difficult to observe from space, including those over water, the wet tropics, and the Arctic. Potentially large methane sources over water include offshore oil and gas facilities, wastewater facilities, hydroelectric and agricultural reservoirs, and estuaries. They can be observed in the sunglint mode or by lidar (Kiemle et al., 2017; Irakulis-Loitxate et al., 2022b). The wet tropics and the Arctic are a challenge because of persistent cloudiness, compounded in the Arctic by high solar zenith angles and polar darkness and by the collocation of oil and gas emissions with wetland emissions. The MERLIN lidar instrument will provide a unique observation capability for the Arctic. The GeoCarb geostationary instrument will increase data density over tropical South America. The tropics are thought to be the principal driver for the recent methane increase (Chandra et al., 2021; Yin et al., 2021; Zhang et al., 2021), and there would be considerable value in dedicated geostationary or inclined-orbit satellite observations of the tropics with high pixel resolution.

The ultimate goal of top-down methane emission estimates is to improve bottom-up estimates, as the latter provide the information needed for climate action by relating emissions to processes. This calls for partnerships where discrepancies identified by satellite for a particular sector motivate work to improve bottom-up estimates for that sector. The International Methane Emissions Observatory (IMEO; United Nations Environmental Program, 2021) aims to facilitate this infusion of top-down information into the improvement of bottom-up inventories on a global scale in support of the Paris agreement, and initiatives in the oil and gas industry aim to achieve the same at the level of oil and gas production fields and individual facilities (Cooper et al., 2022).

The capability is thus emerging for satellite observations to anchor a global methane monitoring system delivering global information on emissions in near real time, from the global scale down to point sources, to support climate policy and to guide corrective action. The basic framework for building such a facility is already here and will be rapidly augmented in coming years with the launch of new instruments.

Data availability. The GOSAT methane data in Fig. 2 are available at https://www.leos.le.ac.uk/data/GHG/GOSAT/v9.0/CH4_GOS_OCPR_v9.0_final_nceo_2009_2021.tar.gz (last access: 22 July 2022). The SRON S5P-RemoTeC scientific TROPOMI methane data in Figs. 2 and 3 are available at <https://doi.org/10.5281/zenodo.4447228> (Lorente et al., 2021b). The Sentinel-2 data in Fig. 3 are available at https://doi.org/10.5270/S2_-d8we2fl (European Space Agency, 2021). The PRISMA and GHGSat data in Fig. 3 are available for non-commercial uses upon request to the corresponding author. The data in Figs. 7 and 8 are available at <https://doi.org/10.1038/s41586-019-1720-3> (Duren et al., 2019) for California in 2016–2017, <https://doi.org/10.1021/acs.estlett.1c00173> (Cusworth et al., 2021b) for the Permian Basin in 2019, and <https://doi.org/10.5281/zenodo.5606120> (Cusworth et al., 2021d) for the AVIRIS-NG/GAO campaigns in 2020–2021.

Author contributions. DJJ wrote the manuscript with contributions from DJV, DHC, PED, CF, RG, LG, JK, JMK, LEO, BP, ZQ, AKT, JRW, and RMD. DJV, DHC, JK, and ZQ produced the figures. RMD and DHC wrote the initial draft of Sect. 6.2. JK led the CAMS project that produced this paper.

Competing interests. The contact author has declared that none of the authors has any competing interests.

Disclaimer. Publisher's note: Copernicus Publications remains neutral with regard to jurisdictional claims in published maps and institutional affiliations.

Acknowledgements. We thank Felipe J. Cardoso-Saldaña and Cynthia Randles of ExxonMobil Technology and Engineering Company, Yasjka Meijer and Ben Veihelmann of the ESA, Ilse Aben of SRON, and Robert Parker of U. Leicester for their valuable comments. We thank Halina Dodd of the Halo Agency, LLC, for producing Fig. 1. Riley M. Duren and Daniel H. Cusworth acknowledge additional support from Carbon Mapper's philanthropic donors. Portions of this research was carried out at the Jet Propulsion Laboratory, California Institute of Technology, under a contract with the National Aeronautics and Space Administration (grant no. 80NM0018D0004). Philip E. Dennison acknowledges funding from NASA Carbon Monitoring System (grant no. 80NSSC20K0244).

Financial support. This research has been supported by the Col-laboratory to Advance Methane Science (CAMS) and the National Aeronautics and Space Administration, Earth Sciences Division (grant no. NNH20ZDA001N-CMS).

Review statement. This paper was edited by Jason West and re-viewed by two anonymous referees.

References

- Alexe, M., Bergamaschi, P., Segers, A., Detmers, R., Butz, A., Hasekamp, O., Guerlet, S., Parker, R., Boesch, H., Frankenberg, C., Scheepmaker, R. A., Dlugokencky, E., Sweeney, C., Wofsy, S. C., and Kort, E. A.: Inverse modelling of CH₄ emissions for 2010–2011 using different satellite retrieval products from GOSAT and SCIAMACHY, *Atmos. Chem. Phys.*, 15, 113–133, <https://doi.org/10.5194/acp-15-113-2015>, 2015.
- Allen, D. T., Cardoso-Saldaña, F., and Kimura, Y.: Variability in spatially and temporally resolved emissions and hydrocarbon source fingerprints for oil and gas sources in shale gas production regions, *Environ. Sci. Technol.*, 51, 12016–12026, <https://pubs.acs.org/doi/10.1021/acs.est.7b02202>, 2017.
- Allen, D. T., Cardoso-Saldaña, F. J., Kimura, Y., Chen, Q., Xi-ang, Z., Zimmerle, D., Bell, C., Lute, C., Duggan, J., and Harrison, M.: A Methane Emission Estimation Tool (MEET) for predictions of emissions from upstream oil and gas well sites with fine scale temporal and spatial resolution: Model structure and applications, *Sci. Total Environ.*, 829, 154277, <https://doi.org/10.1016/j.scitotenv.2022.154277>, 2022.
- Angevine, W. M., Peischl, J., Crawford, A., Loughner, C. P., Pollack, I. B., and Thompson, C. R.: Errors in top-down estimates of emissions using a known source, *Atmos. Chem. Phys.*, 20, 11855–11868, <https://doi.org/10.5194/acp-20-11855-2020>, 2020.
- Ayasse, A. K., Thorpe, A. K., Roberts, D. A., Funk, C. C., Dennison, P. E., Frankenberg, C., Steffke, A., and Aubrey, A. D.: Evaluating the effects of surface properties on methane retrievals using a synthetic airborne visible/infrared imaging spectrometer next generation (AVIRIS-NG) image, *Remote Sens. Environ.*, 215, 386–397, <https://doi.org/10.1016/j.rse.2018.06.018>, 2018.
- Ayasse, A. K., Dennison, P. E., Foote, M., Thorpe, A. K., Joshi, S., Green, R. O., Duren, R. M., Thompson, D. R., and Roberts, D. A.: Methane mapping with future satellite imaging spectrometers, *Remote Sensing*, 11, 3054, <https://doi.org/10.3390/rs11243054>, 2019.
- Barré, J., Aben, I., Agustí-Panareda, A., Balsamo, G., Bousserez, N., Dueben, P., Engelen, R., Inness, A., Lorente, A., McNorton, J., Peuch, V.-H., Radnoti, G., and Ribas, R.: Systematic detection of local CH₄ anomalies by combining satellite measurements with high-resolution forecasts, *Atmos. Chem. Phys.*, 21, 5117–5136, <https://doi.org/10.5194/acp-21-5117-2021>, 2021.
- Bergamaschi, P., Houweling, S., Segers, A., Krol, M., Frankenberg, C., Scheepmaker, R. A., Dlugokencky, E., Wofsy, S. C., Kort, E. A., Sweeney, C., Schuck, T., Brenninkmeijer, C., Chen, H., Beck, V., and Gerbig, C.: Atmospheric CH₄ in the first decade of the 21st century: Inverse modeling analysis using SCIAMACHY satellite retrievals and NOAA sur-face measurements, *J. Geophys. Res.-Atmos.*, 118, 7350–7369, <https://doi.org/10.1002/jgrd.50480>, 2013.
- Bloom, A. A., Bowman, K. W., Lee, M., Turner, A. J., Schroeder, R., Worden, J. R., Weidner, R., McDonald, K. C., and Jacob, D. J.: A global wetland methane emissions and uncertainty dataset for atmospheric chemical transport models (WetCHARTs version 1.0), *Geosci. Model Dev.*, 10, 2141–2156, <https://doi.org/10.5194/gmd-10-2141-2017>, 2017.
- Borchardt, J., Gerilowski, K., Krautwurst, S., Bovensmann, H., Thorpe, A. K., Thompson, D. R., Frankenberg, C., Miller, C. E., Duren, R. M., and Burrows, J. P.: Detection and quantification of CH₄ plumes using the WFM-DOAS retrieval on AVIRIS-NG hyperspectral data, *Atmos. Meas. Tech.*, 14, 1267–1291, <https://doi.org/10.5194/amt-14-1267-2021>, 2021.
- Bousserez, N., Henze, D.K., Perkins, A., Bowman, K.W., Lee, M., Liu, J., Deng, F., and Jones, D. B. A.: Improved analysis error covariance matrix for high-dimensional variational inversions: application to source estimation using a 3D atmospheric transport model, *Q. J. Roy. Meteor. Soc.*, 141, 1906–1921, <https://doi.org/10.1002/qj.2495>, 2015.
- Brandt, A. R., Heath, G. R., and Cooley, D.: Methane leaks from natural gas systems follow extreme distributions, *Environ. Sci. Technol.*, 50, 12512–12520, <https://doi.org/10.1021/acs.est.6b04303>, 2016.
- Brasseur, G. P. and Jacob, D. J.: *Modeling of Atmospheric Chemistry*, Cambridge University Press, Cambridge, UK, <https://doi.org/10.1017/9781316544754>, 2017.
- Bruhwyler, L., Basu, S., Butler, J. H., Chatterjee, A., Dlugokencky, E., Kenney, M. A., McComiskey, A., Montzka, S. A., and Stanitski, D.: Observations of greenhouse gases as climate indicators, *Clim. Change*, 165, 12, <https://doi.org/10.1007/s10584-021-03001-7>, 2021.
- Buchwitz, M., Reuter, M., Schneising, O., Boesch, H., Guerlet, S., Dils, B., Aben, I., Armante, R., Bergamaschi, P., Blumenstock, T., Bovensmann, H., Brunner, D., Buchmann, B., Burrows, J., Butz, A., Chédin, A., Chevallier, F., Crevoisier, C., Deutscher, N., Frankenberg, C., Hase, F., Hasekamp, O., Heymann, J., Kaminski, T., Laeng, A., Lichtenberg, G., Mazière, M. D., Noël, S., Notholt, J., Orphal, J., Popp, C., Parker, R., Scholze, M., Sussmann, R., Stiller, G., Warneke, T., Zehner, C., Bril, A., Crisp, D., Griffith, D., Kuze, A., O'Dell, C., Oshchepkov, S., Sherlock, V., Suto, H., Wennberg, P., Wunch, D., Yokota, T., and Yoshida, Y.: The Greenhouse Gas Climate Change Initiative (GHG-CCI): Comparison and quality assessment of near-surface-sensitive satellite-derived CO₂ and CH₄ global data sets, *Remote Sens. Environ.*, 162, 344–362, <https://doi.org/10.1016/j.rse.2013.04.024>, 2015.
- Butz, A., Galli, A., Hasekamp, O., Landgraf, J., Tol, P., and Aben, I.: TROPOMI aboard Precursor Sentinel-5 Precursor: Prospective performance of CH₄ retrievals for aerosol and cirrus loaded atmospheres, *Remote Sens. Environ.*, 120, 267–276, <https://doi.org/10.1016/j.rse.2011.05.030>, 2012.
- Cardoso-Saldaña, F. J., and Allen, D. T.: Projecting the temporal evolution of methane emissions from oil and gas production sites, *Environ. Sci. Technol.*, 54, 14172–14181, <https://doi.org/10.1021/acs.est.0c03049>, 2020.
- Chandra, N., Patra, P.K., Bisht, J. S. H., Ito, A., Umezawa, T., Saigusa, N., Morimoto, S., Aoki, S., Janssens-Maenhout, G., Fujita, R., Takigawa, M., Watanabe, and Saitoh, N.: Emissions from

- the oil and gas sectors, coal mining and ruminant farming drive methane growth over the past three decades, *J. Met. Soc. Jpn.*, 99, 309–337, <https://doi.org/10.2151/jmsj.2021-015>, 2021.
- Chen, Y., Sherwin, E.D., Berman, E. S. F., Jones, B. B., Gordon, M. P., Wetherley, E. B., Kort, E. A., and Brandt, A. R.: Quantifying regional methane emissions in the New Mexico Permian Basin with a comprehensive aerial survey, *Environ. Sci. Technol.*, <https://doi.org/10.1021/acs.est.1c06458>, 2022.
- Chen, Z., Jacob, D., Nesser, H., Sulprizio, M., Lorente, A., Varon, D., Lu, X., Shen, L., Qu, Z., Penn, E., and Yu, X.: Methane emissions from China: a high-resolution inversion of TROPOMI satellite observations, *Atmos. Chem. Phys. Discuss.* [preprint], <https://doi.org/10.5194/acp-2022-303>, in review, 2022.
- Cho, T., Chung, J., Miller, S. M., and Saibaba, A. K.: Computationally efficient methods for large-scale atmospheric inverse modeling, *Geosci. Model Dev.*, 15, 5547–5565, <https://doi.org/10.5194/gmd-15-5547-2022>, 2022.
- Cooper, J., Dubey, L., and Hawkes, A.: Methane detection and quantification in the upstream oil and gas sector: the role of satellites in emissions detection, reconciling and reporting, *Environ. Sci. Atmos.*, 2, 9–23, <https://doi.org/10.1039/D1EA00046B>, 2022.
- Cusworth, D. H., Jacob, D. J., Sheng, J.-X., Benmergui, J., Turner, A. J., Brandman, J., White, L., and Randles, C. A.: Detecting high-emitting methane sources in oil/gas fields using satellite observations, *Atmos. Chem. Phys.*, 18, 16885–16896, <https://doi.org/10.5194/acp-18-16885-2018>, 2018.
- Cusworth, D. H., Jacob, D. J., Varon, D. J., Chan Miller, C., Liu, X., Chance, K., Thorpe, A. K., Duren, R. M., Miller, C. E., Thompson, D. R., Frankenberg, C., Guanter, L., and Randles, C. A.: Potential of next-generation imaging spectrometers to detect and quantify methane point sources from space, *Atmos. Meas. Tech.*, 12, 5655–5668, <https://doi.org/10.5194/amt-12-5655-2019>, 2019.
- Cusworth, D. H., Duren, R. M., Yadav, V., Thorpe, A. K., Verhulst, K., Sander, S., Hopkins, F., Rafiq, T., and Miller, C. E.: Synthesis of methane observations across scales: Strategies for deploying a multitiered observing network, *Geophys. Res. Lett.*, 47, e2020GL087869, <https://doi.org/10.1029/2020GL087869>, 2020.
- Cusworth, D. H., Duren, R., Thorpe, A. K., Pandey, S., Aben, I., Jervis, D., Varon, D., Jacob, D. J., Randles, C. A., Gautam, R., Omara, M., Schade, G., Dennison, P. E., Frankenberg, C., Gordon, D., Lopinto, E., and Miller, C. E.: Multi-satellite imaging of a gas well blowout provides new insights for methane monitoring, *Geophys. Res. Lett.*, 48, e2020GL090864, <https://doi.org/10.1029/2020GL090864>, 2021a.
- Cusworth, D. H., Duren, R. M., Thorpe, A. K., Olson-Duvall, W., Heckler, J., Chapman, J. W., Eastwood, M. L., Helmlinger, M. C., Green, R. O., Asner, G. P., Dennison, P. E., and Miller, C. E.: Intermittency of large methane emitters in the Permian Basin, *Environ. Sci. Technol. Lett.*, 8, 567–573, <https://doi.org/10.1021/acs.estlett.1c00173>, 2021b.
- Cusworth, D. H., Bloom, A. A., Ma, S., Miller, C. E., Bowman, K., Yin, Y., Maasackers, J. D., Zhang, Y., Scarpelli, T. R., Qu, Z., Jacob, D. J. and Worden, J. R.: A Bayesian framework for deriving sector-based methane emissions from top-down fluxes, *Nat. Commun. Earth Environ.*, 2, 242, <https://doi.org/10.1038/s43247-021-00312-6>, 2021c.
- Cusworth, D. H., Duren, R., Ayasse, A., Thorpe, A., Asner, G., and Green, R.: Methane plumes from airborne surveys 2020–2021 (1.0), Zenodo [data set], <https://doi.org/10.5281/zenodo.5606120>, 2021d.
- Cusworth, D. H., Thorpe, A. K., Ayasse, A. K., Stepp, D., Heckler, J., Asner, G. P., Miller, C. E., Chapman, J. W., Eastwood, M. L., Green, R. O., Hmiel, B., Lyon, D., and Duren, R. M.: Strong methane point sources contribute a disproportionate fraction of total emissions across multiple basins in the U.S., *Earth ArXiv*, <https://doi.org/10.31223/X53P88>, 2022.
- Deng, Z., Ciais, P., Tzompa-Sosa, Z. A., Saunio, M., Qiu, C., Tan, C., Sun, T., Ke, P., Cui, Y., Tanaka, K., Lin, X., Thompson, R. L., Tian, H., Yao, Y., Huang, Y., Lauerwald, R., Jain, A. K., Xu, X., Bastos, A., Sitch, S., Palmer, P. I., Lauvaux, T., d'Aspremont, A., Giron, C., Benoit, A., Poulter, B., Chang, J., Petrescu, A. M. R., Davis, S. J., Liu, Z., Grassi, G., Albergel, C., Tubiello, F. N., Perugini, L., Peters, W., and Chevallier, F.: Comparing national greenhouse gas budgets reported in UNFCCC inventories against atmospheric inversions, *Earth Syst. Sci. Data*, 14, 1639–1675, <https://doi.org/10.5194/essd-14-1639-2022>, 2022.
- Duren, R. M., Thorpe, A. K., Foster, K. T., Rafiq, T., Hopkins, F. M., Yadav, V., Bue, B. D., Thompson, D. R., Conley, S., Colombi, N. K., Frankenberg, C., McCubbin, I.B., Eastwood, M. L., Falk, M., Herner, J. D., Croes, B. E., Green, R. O., and Miller, C. E.: California's methane super-emitters, *Nature*, 575, 180–184, <https://doi.org/10.1038/s41586-019-1720-3>, 2019.
- Duren, R. M.: Carbon Mapper: on-orbit performance predictions and airborne prototyping, American Geophysical Union Fall Meeting, New Orleans, 13–17 December 2021, A53F-05, <https://agu.confex.com/agu/fm21/meetingapp.cgi/Paper/985888> (last access: 23 July 2022), 2021.
- Ehret, T., Bousquet, P., Pierangelo, C., Alpers, M., Millet, B., Abshire, J.B., Bovensmann, H., Burrows, J.P., Chevallier, F., Ciais, P., Crevoisier, C., Fix, A., Flamant, P., Frankenberg, C., Gibert, F., Heim, B., Heimann, M., Houweling, S., Hubberten, H.W., Jöckel, P., Law, K., Löw, A., Marshall, J., Agusti-Panareda, A., Payan, S., Prigent, C., Rairoux, P., Sachs, T., Scholze, M., and Wirth, M.: MERLIN: A French-German space lidar mission dedicated to atmospheric methane, *Remote Sens.*, 9, 1052, <https://doi.org/10.3390/rs9101052>, 2017.
- Ehret, T., De Truchis, A., Mazzolini, M., Morel, J.-M., d'Aspremont, A., Lauvaux, T., and Facciolo, G.: Global tracking and quantification of oil and gas methane leaks from recurrent Sentinel-2 imagery, *arXiv*, 2110.11832v1, physics.a-ph, <https://doi.org/10.48550/arXiv.2110.11832>, 2022.
- European Space Agency: Sentinel-5, ESA SP-1336, ISBN 978-92-9221-434-0, https://esamultimedia.esa.int/docs/EarthObservation/SP_1336_Sentinel-5_web.pdf (last access: 23 July 2022), 2020.
- European Space Agency: Copernicus Sentinel-2 (processed by ESA), MSI Level-1C TOA Reflectance Product, Collection 0, European Space Agency [data set], https://doi.org/10.5270/S2_d8we2fl, 2021.
- Feng, L., Palmer, P. I., Bösch, H., Parker, R. J., Webb, A. J., Correia, C. S. C., Deutscher, N. M., Domingues, L. G., Feist, D. G., Gatti, L. V., Gloor, E., Hase, F., Kivi, R., Liu, Y., Miller, J. B., Morino, I., Sussmann, R., Strong, K., Uchino, O., Wang, J., and Zahn, A.: Consistent regional fluxes of CH₄ and CO₂ inferred from GOSAT proxy XCH₄:XCO₂ retrievals, 2010–2014, *At-*

- mos. Chem. Phys., 17, 4781–4797, <https://doi.org/10.5194/acp-17-4781-2017>, 2017.
- Footo, M. D., Dennison, P. E., Thorpe, A. K., Thompson, D. R., Jongaramrungruang, S., Frankenberg, C., and Joshi, S. C.: Fast and accurate retrieval of methane concentration from imaging spectrometer data using sparsity prior, *IEEE Trans. Geosci. Remote Sens.*, 58, 6480–6492, <https://doi.org/10.1109/TGRS.2020.2976888>, 2020.
- Fox, T. A., Gao, M., Barchyn, T. E., Jamin, Y. L., and Hugenholtz, C. H.: An agent-based model for estimating emissions reduction equivalence among leak detection and repair programs, *J. Cleaner Production*, 282, 125237, <https://doi.org/10.1016/j.jclepro.2020.125237>, 2021.
- Frankenberg, C., Platt, U., and Wagner, T.: Iterative maximum a posteriori (IMAP)-DOAS for retrieval of strongly absorbing trace gases: Model studies for CH₄ and CO₂ retrieval from near infrared spectra of SCIAMACHY onboard ENVISAT, *Atmos. Chem. Phys.*, 5, 9–22, <https://doi.org/10.5194/acp-5-9-2005>, 2005.
- Frankenberg, C., Thorpe, A. K., Thompson, D. R., Hulley, G., Kort, E. A., Vance, N., Borchardt, J., Krings, T., Gerilowski, K., Sweeney, C., Conley, S., Bue, B. D., Aubrey, A. D., Hook, S., Green, R. O.: Airborne methane remote measurements reveal heavy-tail flux distribution in Four Corners region, *P. Natl. Acad. Sci. USA*, 113, 9734–9739, <https://doi.org/10.1073/pnas.1605617113>, 2016.
- Ganesan, A. L., Schwietzke, S., Poulter, B., Arnold, T., Lan, X., Rigby, M., Vogel, F. R., van der Werf, G. R., Janssens-Maenhout, G., Boesch, H., Pandey, S., Manning, A. J., Jackson, R. B., Nisbet, E. G., and Manning, M. R.: Advancing scientific understanding of the global methane budget in support of the Paris Agreement, *Global Biogeochem. Cy.*, 33, 1475–1512, <https://doi.org/10.1029/2018GB006065>, 2019.
- Gauthier, J.-F.: The importance of matching needs to satellite system capability when monitoring methane emissions from space, *IEEE International Geoscience and Remote Sensing Symposium (IGARSS)*, Brussels, 11–16 July 2021, <https://doi.org/10.1109/IGARSS47720.2021.9555123>, 2021.
- GEO, ClimateTRACE, WGIC: GHG Monitoring from Space: A mapping of capabilities across public, private, and hybrid satellite missions, <https://wgicouncil.org/publication/reports/industry-reports/> (last access: 23 July 2022), 2021.
- Graven, H., Hocking, T., and Zazzeri, G.: Detection of fossil and biogenic methane at regional scales using atmospheric radiocarbon, *Earth's Future*, 7, 283–299, <https://doi.org/10.1029/2018EF001064>, 2019.
- Guanter, L., Irakulis-Loitxate, I., Gorroño, J., Sánchez-García, E., Cusworth, D. H., Varon, D. J., Cogliati, S., and Colombo, R.: Mapping methane point emissions with the PRISMA spaceborne imaging spectrometer, *Remote Sens. Environ.*, 265, 112671, <https://doi.org/10.1016/j.rse.2021.112671>, 2021.
- Hajny, K. D., Salmon, O. E., Rudek, J., Lyon, D. R., Stuff, A. A., Stirm, B. H., Kaeser, R., Floerchinger, C. R., Conley, S., Smith, M. L., and Shepson, P. B.: Observations of methane emissions from natural gas-fired power plants, *Environ. Sci. Technol.*, 15, 8976–8984, <https://doi.org/10.1021/acs.est.9b01875>, 2019.
- Heald, C. L., Jacob, D. J., Jones, D. B. A., Palmer, P. I., Logan, J. A., Streets, D. G., Sachse, G. W., Gille, J. C., Hoffman, R. N., and Nehr Korn, T.: Comparative inverse analysis of satellite (MO-PITT) and aircraft (TRACE-P) observations to estimate Asian sources of carbon monoxide, *J. Geophys. Res.*, 109, D23306, <https://doi.org/10.1029/2004JD005185>, 2004.
- Hill, T. and Nassar, R.: Pixel size and revisit rate requirements for monitoring power plant CO₂ emissions from space, *Remote Sens.*, 11, 1608, <https://doi.org/10.3390/rs11131608>, 2019.
- Hulley, G. C., Duren, R. M., Hopkins, F. M., Hook, S. J., Vance, N., Guillevic, P., Johnson, W. R., Eng, B. T., Mihaly, J. M., Jovanovic, V. M., Chazanoff, S. L., Staniszewski, Z. K., Kuai, L., Worden, J., Frankenberg, C., Rivera, G., Aubrey, A. D., Miller, C. E., Malakar, N. K., Sánchez Tomás, J. M., and Holmes, K. T.: High spatial resolution imaging of methane and other trace gases with the airborne Hyperspectral Thermal Emission Spectrometer (HyTES), *Atmos. Meas. Tech.*, 9, 2393–2408, <https://doi.org/10.5194/amt-9-2393-2016>, 2016.
- IPCC: 2019 Refinement to the 2006 IPCC Guidelines for National Greenhouse Gas Inventories, edited by: Calvo Buendia, E., Tanabe, K., Kranjc, A., Jamsranjav, B., Fukuda, M., Ngarize, S., Osaka, A., Pyrozhenko, Y., Shermanau, P., and Federici, S., IPCC, Switzerland, <https://www.ipcc.ch/report/2019-refinement-to-the-2006-ipcc-guidelines> (last access: 23 July 2022), 2019.
- Irakulis-Loitxate, I., Guanter, L., Liu, Y.-N., Varon, D. J., Maasackers, J. D., Zhang, Y., Thorpe, A. K., Duren, R. M., Frankenberg, C., Lyon, D., Hmiel, B., Cusworth, D. H., Zhang, Y., Segl, K., Gorrón, J., Sanchez-García, E., Sulprizio, M. P., Cao, K., Zhu, H., Liang, J., Li, X., Aben, I., and Jacob, D. J.: Satellite-based survey of extreme methane emissions in the Permian Basin, *Sci. Adv.*, 7, eabf4507, <https://doi.org/10.1126/sciadv.abf4507>, 2021.
- Irakulis-Loitxate, I., Guanter, L., Maasackers, J. D., Zavala-Araiza, D., and Aben, I.: Satellites detect abatable super-emissions in one of the world's largest methane hotspot regions, *Environ. Sci. Technol.* 56, 4, 2143–2152, <https://doi.org/10.1021/acs.est.1c04873>, 2022a.
- Irakulis-Loitxate, I., Gorrón, J., Zavala-Araiza, D., and Guanter, L.: Satellites detect a methane ultra-emission event from an offshore platform in the Gulf of Mexico, *Environ. Sci. Technol. Lett.*, 9, 522–525, <https://doi.org/10.1021/acs.estlett.2c00225>, 2022b.
- Jacob, D. J., Turner, A. J., Maasackers, J. D., Sheng, J., Sun, K., Liu, X., Chance, K., Aben, I., McKeever, J., and Frankenberg, C.: Satellite observations of atmospheric methane and their value for quantifying methane emissions, *Atmos. Chem. Phys.*, 16, 14371–14396, <https://doi.org/10.5194/acp-16-14371-2016>, 2016.
- Janardanan, R., Maksyutov, S., Tsuruta, A., Wang, F., Tiwari, Y. K., Valsala, V., Ito, A., Yoshida, Y., Kaiser, J. W., Janssens-Maenhout, G., Arshinov, M., Sasakawa, M., Tohjima, Y., Worthy, D. E. J., Dlugokencky, E. J., Ramonet, M., Arduini, J., Lavric, J. V., Piacentino, S., Krummel, P. B., Langenfelds, R. L., Mammarella, I., and Matsunaga, T.: Country-scale analysis of methane emissions with a high-resolution inverse model using GOSAT and surface observations, *Remote Sens.*, 12, 375, <https://doi.org/10.3390/rs12030375>, 2020.
- Jervis, D., McKeever, J., Durak, B. O. A., Sloan, J. J., Gains, D., Varon, D. J., Ramier, A., Strupler, M., and Tarrant, E.: The GHGSat-D imaging spectrometer, *Atmos. Meas. Tech.*, 14, 2127–2140, <https://doi.org/10.5194/amt-14-2127-2021>, 2021.

- Johnson, D. and Heltzel, R.: On the long-term temporal variations in methane emissions from an unconventional natural gas well site, *ACS Omega*, 6, 14200–14207, <https://doi.org/10.1021/acsomega.1c00874>, 2021.
- Jongaramrungruang, S., Frankenberg, C., Matheou, G., Thorpe, A. K., Thompson, D. R., Kuai, L., and Duren, R. M.: Towards accurate methane point-source quantification from high-resolution 2-D plume imagery, *Atmos. Meas. Tech.*, 12, 6667–6681, <https://doi.org/10.5194/amt-12-6667-2019>, 2019.
- Jongaramrungruang, S., Matheou, G., Thorpe, A. K., Zeng, Z.-C., and Frankenberg, C.: Remote sensing of methane plumes: instrument tradeoff analysis for detecting and quantifying local sources at global scale, *Atmos. Meas. Tech.*, 14, 7999–8017, <https://doi.org/10.5194/amt-14-7999-2021>, 2021.
- Jongaramrungruang, S., Matheou, G., Thorpe, A. K., Zeng, Z.-C., and Frankenberg, C.: MethaNet – An AI-driven approach to quantifying methane point-source emission from high-resolution 2-D plume imagery, *Remote Sens. Environ.*, 269, 112809, <https://doi.org/10.1016/j.rse.2021.112809>, 2022.
- Karion, A., Sweeney, C., Kort, E. A., Shepson, P. B., Brewer, A., Cambaliza, M., Conley, S. A., Davis, K., Deng, A., Hardesty, M., Herndon, S. C., Lauvaux, T., Lavoie, T., Lyon, D., Newberger, T., Petron, G., Rella, C., Smith, M., Wolter, S., Yacovitch, T. I., and Tans, P.: Aircraft-Based Estimate of Total Methane Emissions from the Barnett Shale Region, *Environ. Sci. Technol.*, 49, 8124–8131, <https://doi.org/10.1021/acs.est.5b00217>, 2015.
- Kemp, C. E., Ravikumar, A. P., and Brandt, A. R.: Comparing natural gas leakage detection technologies using an open-source “virtual gas field” simulator, *Environ. Sci. Technol.*, 50, 4546–4553, <https://doi.org/10.1021/acs.est.5b06068>, 2016.
- Kiemle C., Ehret, G., Amediek, A., Fix, A., Quatrevalet, M., and Wirth, M.: Potential of spaceborne lidar measurements of carbon dioxide and methane emissions from strong point sources, *Remote Sens.*, 9, 1137, <https://doi.org/10.3390/rs9111137>, 2017.
- Koo, J.-H., Walker, K. A., Jones, A., Sheese, P. E., Boone, C. D., Bernath, P. F., and Manney, G. L.: Global climatology based on the ACE-FTS version 3.5 dataset: Addition of mesospheric levels and carbon-containing species in the UTLS, *J. Quant. Spectrosc. Ra.*, 186, 52–62, <https://doi.org/10.1016/j.jqsrt.2016.07.003>, 2017.
- Krings, T., Gerilowski, K., Buchwitz, M., Reuter, M., Tretner, A., Erzinger, J., Heinze, D., Pflüger, U., Burrows, J. P., and Bovensmann, H.: MAMAP – a new spectrometer system for column-averaged methane and carbon dioxide observations from aircraft: retrieval algorithm and first inversions for point source emission rates, *Atmos. Meas. Tech.*, 4, 1735–1758, <https://doi.org/10.5194/amt-4-1735-2011>, 2011.
- Lan, X., Basu, S., Schwietzke, S., Bruhwiler, L. M. P., Dlugokencky, E. J., Michel, S. E., et al.: Improved constraints on global methane emissions and sinks using $\delta^{13}\text{C}-\text{CH}_4$, *Glob. Biogeochem. Cy.*, 35, e2021GB007000, <https://doi.org/10.1029/2021GB007000>, 2021.
- Lauvaux, T., Giron, C., Mazzolini, M., d’Aspremont, A., Duren, R., Cusworth, D., Shindell, D., and Ciais, P.: Global assessment of oil and gas methane ultra-emitters, *Science*, 375, 557–561, <https://doi.org/10.31223/XSNS54>, 2022.
- Lorente, A., Borsdorff, T., Butz, A., Hasekamp, O., aan de Brugh, J., Schneider, A., Wu, L., Hase, F., Kivi, R., Wunch, D., Pollard, D. F., Shiomi, K., Deutscher, N. M., Velazco, V. A., Roehl, C. M., Wennberg, P. O., Warneke, T., and Landgraf, J.: Methane retrieved from TROPOMI: improvement of the data product and validation of the first 2 years of measurements, *Atmos. Meas. Tech.*, 14, 665–684, <https://doi.org/10.5194/amt-14-665-2021>, 2021a.
- Lorente, A., Borsdorff, T., aan de Brugh, J., Landgraf, J., and Hasekamp, O.: SRON S5P – RemoTeC scientific TROPOMI XCH₄ dataset, Zenodo [data set], <https://doi.org/10.5281/zenodo.4447228>, 2021b.
- Lu, X., Jacob, D. J., Zhang, Y., Maasackers, J. D., Sulprizio, M. P., Shen, L., Qu, Z., Scarpelli, T. R., Nesser, H., Yantosca, R. M., Sheng, J., Andrews, A., Parker, R. J., Boesch, H., Bloom, A. A., and Ma, S.: Global methane budget and trend, 2010–2017: complementarity of inverse analyses using in situ (GLOBALVIEWplus CH₄ ObsPack) and satellite (GOSAT) observations, *Atmos. Chem. Phys.*, 21, 4637–4657, <https://doi.org/10.5194/acp-21-4637-2021>, 2021.
- Lu, X., Jacob, D. J., Wang, H., Maasackers, J. D., Zhang, Y., Scarpelli, T. R., Shen, L., Qu, Z., Sulprizio, M. P., Nesser, H., Bloom, A. A., Ma, S., Worden, J. R., Fan, S., Parker, R. J., Boesch, H., Gautam, R., Gordon, D., Moran, M. D., Reuland, F., Villasana, C. A. O., and Andrews, A.: Methane emissions in the United States, Canada, and Mexico: evaluation of national methane emission inventories and 2010–2017 sectoral trends by inverse analysis of in situ (GLOBALVIEWplus CH₄ ObsPack) and satellite (GOSAT) atmospheric observations, *Atmos. Chem. Phys.*, 22, 395–418, <https://doi.org/10.5194/acp-22-395-2022>, 2022.
- Lyon, D. R., Zavala-Araiza, D., Alvarez, R. A., Harriss, R., Palacios, V., Lan, X., Talbot, R., Lavoie, T., Shepson, P., Yacovitch, T. I., Herndon, S. C., Marchese, A. J., Zimmerle, D., Robinson, A. L., and Hamburg, S. P.: Constructing a spatially resolved methane emission inventory for the Barnett Shale region, *Environ. Sci. Technol.*, 49, 8147–8157, <https://doi.org/10.1021/es506359c>, 2015.
- Lyon, D. R., Alvarez, R. A., Zavala-Araiza, D., Brandt, A. R., Jackson, R. B., and Hamburg, S. P.: Aerial surveys of elevated hydrocarbon emissions from oil and gas production sites, *Environ. Sci. Technol.*, 50, 4877–4886, <https://doi.org/10.1021/acs.est.6b00705>, 2016.
- Lyon, D. R., Hmiel, B., Gautam, R., Omara, M., Roberts, K. A., Barkley, Z. R., Davis, K. J., Miles, N. L., Monteiro, V. C., Richardson, S. J., Conley, S., Smith, M. L., Jacob, D. J., Shen, L., Varon, D. J., Deng, A., Rudelis, X., Sharma, N., Story, K. T., Brandt, A. R., Kang, M., Kort, E. A., Marchese, A. J., and Hamburg, S. P.: Concurrent variation in oil and gas methane emissions and oil price during the COVID-19 pandemic, *Atmos. Chem. Phys.*, 21, 6605–6626, <https://doi.org/10.5194/acp-21-6605-2021>, 2021.
- Maasackers, J. D., Jacob, D. J., Sulprizio, M. P., Turner, A. J., Weitz, M., Wirth, T., Hight, C., DeFigueiredo, M., Desai, M., Schmeltz, R., Hockstad, L., Bloom, A. A., Bowman, K. W., Jeong, S., and Fischer, M. L.: Gridded national inventory of U. S. methane emissions, *Environ. Sci. Technol.*, 50, 13123–13133, <https://doi.org/10.1021/acs.est.6b02878>, 2016.
- Maasackers, J. D., Jacob, D. J., Sulprizio, M. P., Scarpelli, T. R., Nesser, H., Sheng, J.-X., Zhang, Y., Hersher, M., Bloom, A. A., Bowman, K. W., Worden, J. R., Janssens-Maenhout, G., and Parker, R. J.: Global distribution of methane emissions, emis-

- sion trends, and OH concentrations and trends inferred from an inversion of GOSAT satellite data for 2010–2015, *Atmos. Chem. Phys.*, 19, 7859–7881, <https://doi.org/10.5194/acp-19-7859-2019>, 2019.
- Maasakkers, J. D., Jacob, D. J., Sulprizio, M. P., Scarpelli, T. R., Nesser, H., Sheng, J., Zhang, Y., Lu, X., Bloom, A. A., Bowman, K. W., Worden, J. R., and Parker, R. J.: 2010–2015 North American methane emissions, sectoral contributions, and trends: a high-resolution inversion of GOSAT observations of atmospheric methane, *Atmos. Chem. Phys.*, 21, 4339–4356, <https://doi.org/10.5194/acp-21-4339-2021>, 2021.
- Maasakkers, J. D., Omara, M., Gautam, R., Lorente, A., Pandey, S., Toi, P., Borsdorff, T., Houweling, S., and Aben, I.: Reconstructing and quantifying methane emissions from the full duration of a 38-day natural gas well blowout using space-based observations, *Remote Sens. Environ.*, 270, 112755, <https://doi.org/10.1016/j.rse.2021.112755>, 2022a.
- Maasakkers, J. D., Varon, D. J., Elfarsdottir, A., McKeever, J. D., Jervis, D., Mahapatra, G., Pandey, S., Lorente, A., Borsdorff, T., Foorhuis, L. R., Schuit, B. J., Tol, P., van Kempen, T. A., van Hees, R., and Aben, I.: Using satellites to uncover large methane emissions from landfills, *arXiv [preprint]*, <https://doi.org/10.31223/X5N33G>, 2022b.
- MacLean, J.-P.: Detecting and quantifying methane emissions with the high-resolution GHGSat satellite constellation, American Geophysical Union Fall meeting, New Orleans, 13–17 December 2021, A54F-01, <https://agu.confex.com/agu/fm21/meetingapp.cgi/Paper/946992> (last access: 23 July 2022), 2021.
- Miller, S. M. and Michalak, A. M.: Constraining sector-specific CO₂ and CH₄ emissions in the US, *Atmos. Chem. Phys.*, 17, 3963–3985, <https://doi.org/10.5194/acp-17-3963-2017>, 2017.
- Miller, S. M., Michalak, A. M., Detmers, R. G., Hasekamp, O. P., Bruhwiler, L. M. P., and Schwietzke, S.: China's coal mine methane regulations have not curbed growing emissions, *Nat. Commun.*, 10, 303, <https://doi.org/10.1038/s41467-018-07891-7>, 865, 2019.
- Miller, S. M., Saibaba, A. K., Trudeau, M. E., Mountain, M. E., and Andrews, A. E.: Geostatistical inverse modeling with very large datasets: an example from the Orbiting Carbon Observatory 2 (OCO-2) satellite, *Geosci. Model Dev.*, 13, 1771–1785, <https://doi.org/10.5194/gmd-13-1771-2020>, 2020.
- Moore, B., Crowell, S. M. R., Rayner, P. J., Kumer, J., O'Dell, C. W., O'Brien, D., Utembe, S., Polonsky, I., Schimel, D., and Lemen, J.: The Potential of the Geostationary Carbon Cycle Observatory (GeoCarb) to provide multi-scale constraints on the carbon cycle in the Americas, *Front. Environ. Sci.*, 6, 109, <https://doi.org/10.3389/fenvs.2018.00109>, 2018.
- Naik, V., Szopa, S., Adhikary, B., Artaxo, P., Bernsten, T., Collins, W. D., Fuzzi, S., Gallardo, L., Kiendler Scharr, A., Klimont, Z., Liao, H., Unger, N., and Zanis, P.: Short-Lived Climate Forcers, in: *Climate Change 2021: The Physical Science Basis. Contribution of Working Group I to the Sixth Assessment Report of the Intergovernmental Panel on Climate Change*, edited by: Masson-Delmotte, V., Zhai, P., Pirani, A., Connors, S. L., Péan, C., Berger, S., Caud, N., Chen, Y., Goldfarb, L., Gomis, M. L., Huang, M., Leitzell, K., Lonnoy, E., Matthews, J. B. R., Maycock, T. K., Waterfield, T., Yelekçi, O., Yu, R., and Zhou, B., Cambridge University Press, https://www.ipcc.ch/report/ar6/wg1/downloads/report/IPCC_AR6_WGI_Chapter06.pdf (last access: 23 July 2022), 2021.
- Nesme N, Marion, R., Lezeaux, O., Doz, S., Camy-Peyret, C., and Foucher, P.-Y.: Joint use of in-scene background radiance estimation and optimal estimation methods for quantifying methane emissions using PRISMA hyperspectral satellite data: application to the Korpezhe industrial site, *Remote Sens.*, 13, 4992, <https://doi.org/10.3390/rs13244992>, 2021.
- Nesser, H., Jacob, D. J., Maasakkers, J. D., Scarpelli, T. R., Sulprizio, M. P., Zhang, Y., and Rycroft, C. H.: Reduced-cost construction of Jacobian matrices for high-resolution inversions of satellite observations of atmospheric composition, *Atmos. Meas. Tech.*, 14, 5521–5534, <https://doi.org/10.5194/amt-14-5521-2021>, 2021.
- NIES: GOSAT-GW mission: background, aims, and mission requirements, <https://gosat-gw.global-atmos-chem-lab.jp/en/collaboration/> (last access: 23 July 2022), 2021.
- Nisbet, E. G., Fisher, R. E., Lowry, D., France, J. L., Allen, G., Bakkaloglu, S., Broderick, T. J., Cain, M., Coleman, M., Fernandez, J., Forster, G., Griffiths, P. T., Iverach, C. P., Kelly, B. F. J., Manning, M. R., Nisbet-Jones, P. B. R., Pyle, J. A., Townsend-Small, A., al-Shalaan, A., Warwick, N., and Zazzeri, G.: Methane mitigation: methods to reduce emissions, on the path to the Paris agreement, *Rev. Geophys.*, 58, e2019RG000675, <https://doi.org/10.1029/2019RG000675>, 2020.
- Noël, S., Reuter, M., Buchwitz, M., Borchardt, J., Hilker, M., Schneising, O., Bovensmann, H., Burrows, J. P., Di Noia, A., Parker, R. J., Suto, H., Yoshida, Y., Buschmann, M., Deutscher, N. M., Feist, D. G., Griffith, D. W. T., Hase, F., Kivi, R., Liu, C., Morino, I., Notholt, J., Oh, Y.-S., Ohyama, H., Petri, C., Pollard, D. F., Rettinger, M., Roehl, C., Rousogonous, C., Sha, M. K., Shiomi, K., Strong, K., Sussmann, R., Té, Y., Velazco, V. A., Vrekoussis, M., and Warneke, T.: Retrieval of greenhouse gases from GOSAT and GOSAT-2 using the FOCAL algorithm, *Atmos. Meas. Tech.*, 15, 3401–3437, <https://doi.org/10.5194/amt-15-3401-2022>, 2022.
- Omara, M., Zavala-Araiza, D., Lyon, D. R., Hmiel, B., Roberts, K. A., and Hamburg, S. P.: Methane emissions from US low production oil and natural gas well sites, *Nat. Commun.*, 13, 2085, <https://doi.org/10.1038/s41467-022-29709-3>, 2022.
- Palmer, P. I., Feng, L., Lunt, M. F., Parker, R. J., Bosch, H., Lan, X., Lorente, A., and Borsdorff, T.: The added value of satellite observations of methane for understanding the contemporary methane budget, *Phil. Trans. R. Soc. A*, 379, 20210106, <https://doi.org/10.1098/rsta.2021.0106>, 2021.
- Pandey, S., Gautam, R., Houweling, S., Denier van der Gon, H., Sadavarte, P., Borsdorff, T., Hasekamp, O., Landgraf, J., Tol, P., van Kempen, T., Hoogeveen, R., van Hees, R., Hamburg, S. P., Maasakkers, J. D., and Aben, I.: Satellite observations reveal extreme methane leakage from a natural gas well blowout, *P. Natl. Acad. Sci. USA*, 116, 23676–23681, <https://doi.org/10.1073/pnas.1908712116>, 2019.
- Parker, R. J., Webb, A., Boesch, H., Somkuti, P., Barrio Guillo, R., Di Noia, A., Kalaitzi, N., Anand, J. S., Bergamaschi, P., Chevallier, F., Palmer, P. I., Feng, L., Deutscher, N. M., Feist, D. G., Griffith, D. W. T., Hase, F., Kivi, R., Morino, I., Notholt, J., Oh, Y.-S., Ohyama, H., Petri, C., Pollard, D. F., Roehl, C., Sha, M. K., Shiomi, K., Strong, K., Sussmann, R., Té, Y., Velazco, V. A., Warneke, T., Wennberg, P. O., and Wunch, D.: A

- decade of GOSAT Proxy satellite CH₄ observations, *Earth Syst. Sci. Data*, 12, 3383–3412, <https://doi.org/10.5194/essd-12-3383-2020>, 2020.
- Pétron, G., Miller, B., Vaughn, B., Thorley, E., Kofler, J., Mielke-Maday, I., Sherwood, O., Dlugokencky, E., Hall, B., Schwietzke, S., Conley, S., Peischl, J., Lang, P., Moglia, E., Crotwell, M., Crotwell, A., Sweeney, C., Newberger, T., Wolter, S., Kitzis, D., Bianco, L., King, C., Coleman, T., White, A., Rhodes, M., Tans, P., and Schnell, R.: Investigating large methane enhancements in the U.S. San Juan Basin, *Elem. Sci. Anth*, 8, 038, <https://doi.org/10.1525/elementa.038>, 2020.
- Plant, G., Kort, E. A., Murray, L. T., Maasackers, J. D., and Aben, I.: Evaluating urban methane emissions from space using TROPOMI methane and carbon monoxide observations, *Remote Sens. Environ.*, 268, 112756, <https://doi.org/10.1016/j.rse.2021.112756>, 2022.
- Prather, M. J., Holmes, C. D., and Hsu, J.: Reactive greenhouse gas scenarios: Systematic exploration of uncertainties and the role of atmospheric chemistry, *Geophys. Res. Lett.*, 39, L09803, <https://doi.org/10.1029/2012gl051440>, 2012.
- Qu, Z., Jacob, D. J., Shen, L., Lu, X., Zhang, Y., Scarpelli, T. R., Nesser, H., Sulprizio, M. P., Maasackers, J. D., Bloom, A. A., Worden, J. R., Parker, R. J., and Delgado, A. L.: Global distribution of methane emissions: a comparative inverse analysis of observations from the TROPOMI and GOSAT satellite instruments, *Atmos. Chem. Phys.*, 21, 14159–14175, <https://doi.org/10.5194/acp-21-14159-2021>.
- Riris, H., Numata, K., Wu, S., and Fahey, M.: The challenges of measuring methane from space with a LIDAR, *CEAS Space J.*, 11, 475–483, <https://doi.org/10.1007/s12567-019-00274-8>, 2019.
- Rodgers, C. D.: *Inverse Methods for Atmospheric Sounding: Theory and Practice*, World Scientific, River Edge, USA, ISBN 978-9810227401, 2000.
- Rohrshneider, R. R., Wofsy, S., Franklin, J. E., Benmergui, J., Soto, J., and Davis, S. B.: The MethaneSAT Mission, 35th Annual Small Satellite Conference Proceedings, virtual, 7–12 August 2021, SSC21-II-05, 1–7, 2021.
- Sadavarte, P., Pandey, S., Maasackers, J. D., Lorente, A., Gon, H. D., van der Houweling, S., and Aben, I.: Methane emissions from super-emitting coal mines in Australia quantified using TROPOMI satellite observations, *Environ. Sci. Technol.*, 55, 16573–16580, <https://doi.org/10.1021/acs.est.1c03976>, 2021.
- Sánchez-García, E., Gorroño, J., Irakulis-Loitxate, I., Varon, D. J., and Guanter, L.: Mapping methane plumes at very high spatial resolution with the WorldView-3 satellite, *Atmos. Meas. Tech.*, 15, 1657–1674, <https://doi.org/10.5194/amt-15-1657-2022>, 2022.
- Saunois, M., Stavert, A. R., Poulter, B., Bousquet, P., Canadell, J. G., Jackson, R. B., Raymond, P. A., Dlugokencky, E. J., Houweling, S., Patra, P. K., Ciais, P., Arora, V. K., Bastviken, D., Bergamaschi, P., Blake, D. R., Brailsford, G., Bruhwiler, L., Carlson, K. M., Carrol, M., Castaldi, S., Chandra, N., Crevoisier, C., Crill, P. M., Covey, K., Curry, C. L., Etiope, G., Frankenberg, C., Gedney, N., Hegglin, M. I., Höglund-Isaksson, L., Hugelius, G., Ishizawa, M., Ito, A., Janssens-Maenhout, G., Jensen, K. M., Joos, F., Kleinen, T., Krummel, P. B., Langenfelds, R. L., Laruelle, G. G., Liu, L., Machida, T., Maksyutov, S., McDonald, K. C., McNorton, J., Miller, P. A., Melton, J. R., Morino, I., Müller, J., Murguía-Flores, F., Naik, V., Niwa, Y., Noce, S., O’Doherty, S., Parker, R. J., Peng, C., Peng, S., Peters, G. P., Prigent, C., Prinn, R., Ramonet, M., Regnier, P., Riley, W. J., Rosentretter, J. A., Segers, A., Simpson, I. J., Shi, H., Smith, S. J., Steele, L. P., Thornton, B. F., Tian, H., Tohjima, Y., Tubiello, F. N., Tsuruta, A., Viovy, N., Voulgarakis, A., Weber, T. S., van Weele, M., van der Werf, G. R., Weiss, R. F., Worthy, D., Wunch, D., Yin, Y., Yoshida, Y., Zhang, W., Zhang, Z., Zhao, Y., Zheng, B., Zhu, Q., Zhu, Q., and Zhuang, Q.: The Global Methane Budget 2000–2017, *Earth Syst. Sci. Data*, 12, 1561–1623, <https://doi.org/10.5194/essd-12-1561-2020>, 2020.
- Scarfutto, R. D. M., van der Werf, H., Bakker, W. H., van der Meer, F., and de Souza Filho, C. R.: An evaluation of airborne SWIR imaging spectrometers for CH₄ mapping: Implications of band positioning, spectral sampling and noise, *Int. J. Appl. Earth Obs.*, 94, 102233, <https://doi.org/10.1016/j.jag.2020.102233>, 2021.
- Scarpelli, T. R., Jacob, D. J., Maasackers, J. D., Sulprizio, M. P., Sheng, J.-X., Rose, K., Romeo, L., Worden, J. R., and Janssens-Maenhout, G.: A global gridded (0.1° × 0.1°) inventory of methane emissions from oil, gas, and coal exploitation based on national reports to the United Nations Framework Convention on Climate Change, *Earth Syst. Sci. Data*, 12, 563–575, <https://doi.org/10.5194/essd-12-563-2020>, 2020.
- Schneising, O., Buchwitz, M., Reuter, M., Bovensmann, H., Burrows, J. P., Borsdorff, T., Deutscher, N. M., Feist, D. G., Griffith, D. W. T., Hase, F., Hermans, C., Iraci, L. T., Kivi, R., Landgraf, J., Morino, I., Notholt, J., Petri, C., Pollard, D. F., Roche, S., Shiomi, K., Strong, K., Sussmann, R., Velasco, V. A., Warneke, T., and Wunch, D.: A scientific algorithm to simultaneously retrieve carbon monoxide and methane from TROPOMI onboard Sentinel-5 Precursor, *Atmos. Meas. Tech.*, 12, 6771–6802, <https://doi.org/10.5194/amt-12-6771-2019>, 2019.
- Seinfeld, J. H. and Pandis, S.: *Atmospheric Chemistry and Physics*, 3rd edn., Wiley, ISBN 9781118947401, 2016.
- Shen, L., Zavala-Araiza, D., Gautam, R., Omara, M., Scarpelli, T., Sheng, J., Sulprizio, M. P., Zhuang, J., Zhang, Y., Lu, X., Hamburg, S. P., and Jacob, D. J.: Unravelling a large methane emission discrepancy in Mexico using satellite observations, *Remote Sens. Environ.*, 260, 112461, <https://doi.org/10.1016/j.rse.2021.112461>, 2021.
- Shen, L., Gautam, R., Omara, M., Zavala-Araiza, D., Maasackers, J., Scarpelli, T., Lorente, A., Lyon, D., Sheng, J., Varon, D., Nesser, H., Qu, Z., Lu, X., Sulprizio, M., Hamburg, S., and Jacob, D.: Satellite quantification of oil and natural gas methane emissions in the US and Canada including contributions from individual basins, *Atmos. Chem. Phys. Discuss.* [preprint], <https://doi.org/10.5194/acp-2022-155>, in review, 2022.
- Sherwin, A. D., Rutherford, J. S., Chen, Y., Kort, E. A., Jackson, R. B., and Brandt, A. R.: Single-blind validation of space-based point-source methane emissions detection and quantification, *EarthArXiv*, <https://doi.org/10.31223/X5DH09>, 2022.
- Sierk, B., Bézy, J.-L., L’scher, A., and Meijer, Y.: The European CO₂ Monitoring Mission: observing anthropogenic greenhouse gas emissions from space, International Conference on Space Optics – ICSO 2018, Platania, Greece, 12 July 2019, *Proc. SPIE* 11180, <https://doi.org/10.1117/12.2535941>, 2019.
- Suto, H., Kataoka, F., Kikuchi, N., Knuteson, R. O., Butz, A., Haun, M., Buijs, H., Shiomi, K., Imai, H., and Kuze, A.: Thermal and near-infrared sensor for carbon observation Fourier transform

- spectrometer-2 (TANSO-FTS-2) on the Greenhouse gases Observing SATellite-2 (GOSAT-2) during its first year in orbit, *Atmos. Meas. Tech.*, 14, 2013–2039, <https://doi.org/10.5194/amt-14-2013-2021>, 2021.
- Thompson, D. R., Leifer, I., Bovensmann, H., Eastwood, M., Fladland, M., Frankenberg, C., Gerilowski, K., Green, R. O., Kratwurst, S., Krings, T., Luna, B., and Thorpe, A. K.: Real-time remote detection and measurement for airborne imaging spectroscopy: a case study with methane, *Atmos. Meas. Tech.*, 8, 4383–4397, <https://doi.org/10.5194/amt-8-4383-2015>, 2015.
- Thompson, D. R., Thorpe, A. K., Frankenberg, C., Green, R. O., Duren, R., Guanter, L., Hollstein, A., Middleton, E., Ong, L., and Ungar, S.: Space-based remote imaging spectroscopy of the Aliso Canyon CH₄ superemitter, *Geophys. Res. Lett.*, 43, 6571–6578, <https://doi.org/10.1002/2016GL069079>, 2016.
- Thorpe, A. K., Frankenberg, C., and Roberts, D. A.: Retrieval techniques for airborne imaging of methane concentrations using high spatial and moderate spectral resolution: application to AVIRIS, *Atmos. Meas. Tech.*, 7, 491–506, <https://doi.org/10.5194/amt-7-491-2014>, 2014.
- Thorpe, A. K., Frankenberg, C., Thompson, D. R., Duren, R. M., Aubrey, A. D., Bue, B. D., Green, R. O., Gerilowski, K., Krings, T., Borchardt, J., Kort, E. A., Sweeney, C., Conley, S., Roberts, D. A., and Dennison, P. E.: Airborne DOAS retrievals of methane, carbon dioxide, and water vapor concentrations at high spatial resolution: application to AVIRIS-NG, *Atmos. Meas. Tech.*, 10, 3833–3850, <https://doi.org/10.5194/amt-10-3833-2017>, 2017.
- Tu, Q., Hase, F., Schneider, M., García, O., Blumenstock, T., Borsdorff, T., Frey, M., Khosrawi, F., Lorente, A., Alberti, C., Bustos, J. J., Butz, A., Carreño, V., Cuevas, E., Curcoll, R., Diekmann, C. J., Dubravica, D., Ertl, B., Estruch, C., León-Luis, S. F., Marrero, C., Morgui, J.-A., Ramos, R., Scharun, C., Schneider, C., Sepúlveda, E., Toledano, C., and Torres, C.: Quantification of CH₄ emissions from waste disposal sites near the city of Madrid using ground- and space-based observations of COCCON, TROPOMI and IASI, *Atmos. Chem. Phys.*, 22, 295–317, <https://doi.org/10.5194/acp-22-295-2022>, 2022.
- Turner, A. J., Jacob, D. J., Wecht, K. J., Maasakkers, J. D., Lundgren, E., Andrews, A. E., Biraud, S. C., Boesch, H., Bowman, K. W., Deutscher, N. M., Dubey, M. K., Griffith, D. W. T., Hase, F., Kuze, A., Notholt, J., Ohyama, H., Parker, R., Payne, V. H., Sussmann, R., Sweeney, C., Velazco, V. A., Warneke, T., Wennberg, P. O., and Wunch, D.: Estimating global and North American methane emissions with high spatial resolution using GOSAT satellite data, *Atmos. Chem. Phys.*, 15, 7049–7069, <https://doi.org/10.5194/acp-15-7049-2015>, 2015.
- United Nations Environment Programme: An Eye on Methane: International Methane Emissions Observatory, Nairobi, ISBN 978-92-807-3893-3, 2021.
- Van Damme, M., Clarisse, L., Whitburn, M., Hadji-Lazaro, J., Hurtmans, D., Clerbaux, C., and Coheur, P.-F.: Industrial and agricultural ammonia point sources exposed, *Nature*, 564, 99–103, <https://doi.org/10.1038/s41586-018-0747-1>, 2018.
- Varon, D. J., Jacob, D. J., McKeever, J., Jervis, D., Durak, B. O. A., Xia, Y., and Huang, Y.: Quantifying methane point sources from fine-scale satellite observations of atmospheric methane plumes, *Atmos. Meas. Tech.*, 11, 5673–5686, <https://doi.org/10.5194/amt-11-5673-2018>, 2018.
- Varon, D. J., McKeever, J., Jervis, D., Maasakkers, J. D., Pandey, S., Houweling, S., Aben, I., Scarpelli, T. R., and Jacob, D. J.: Satellite discovery of anomalously large methane point sources from oil/gas production, *Geophys. Res. Lett.*, 46, 13507–13516, <https://doi.org/10.1029/2019GL083798>, 2019.
- Varon, D. J., Jacob, D. J., Jervis, D., and McKeever, J.: Quantifying time-averaged methane emissions from individual coal mine vents with GHGSat-D satellite observations, *Environ. Sci. Technol.*, 54, 10246–10253, <https://doi.org/10.1021/acs.est.0c01213>, 2020.
- Varon, D. J., Jervis, D., McKeever, J., Spence, I., Gains, D., and Jacob, D. J.: High-frequency monitoring of anomalous methane point sources with multispectral Sentinel-2 satellite observations, *Atmos. Meas. Tech.*, 14, 2771–2785, <https://doi.org/10.5194/amt-14-2771-2021>, 2021.
- Varon, D. J., Jacob, D. J., Sulprizio, M., Estrada, L., Downs, W. B., Shen, L., Hancock, S. E., Nesser, H., Qu, Z., Penn, E., Chen, Z., Lu, X., Lorente, A., Tewari, A., and Randles, C. A.: Integrated Methane Inversion (IMI 1.0): A user-friendly, cloud-based facility for inferring high-resolution methane emissions from TROPOMI satellite observations, *Geosci. Model Dev. Discuss.* [preprint], <https://doi.org/10.5194/gmd-2022-45>, in review, 2022.
- Vaughn, T. L., Bell, C. S., Pickering, C. K., and Nummedal, D.: Temporal variability largely explains top-down/bottom-up difference in methane emission estimates from a natural gas production region, *P. Natl. Acad. Sci. USA*, 115, 11712–11717, <https://doi.org/10.1073/pnas.1805687115>, 2018.
- Wang, F., Maksyutov, S., Tsuruta, A., Janardanan, R., Ito, A., Sasakawa, M., Machida, T., Morino, I., Yoshida, Y., Kaiser, J. W., Janssens-Maenhout, G., Dlugokencky, E. J., Mammarella, I., Lavric, J. V., and Matsunaga, T.: Methane emission estimates by the global high-resolution inverse model using national inventories, *Remote Sens.*, 11, 2489, <https://doi.org/10.3390/rs11212489>, 2019.
- Wecht, K. J., Jacob, D. J., Frankenberg, C., Jiang, Z., and Blake, D. R.: Mapping of North America methane emissions with high spatial resolution by inversion of SCIAMACHY satellite data, *J. Geophys. Res.*, 119, 7741–7756, <https://doi.org/10.1002/2014JD021551>, 2014.
- Western, L. M., Ramsden, A. E., Ganesan, A. L., Boesch, H., Parker, R. J., Scarpelli, T. R., Tunnicliffe, R. L., and Rigby, M.: Estimates of North African methane emissions from 2010 to 2017 using GOSAT observations, *Environ. Sci. Technol. Lett.*, 8, 626–632, <https://doi.org/10.1021/acs.estlett.1c00327>, 2021.
- White, W. H., Anderson, J. A., Blumenthal, D. L., Husar, R. B., Gillani, N. V., Husar, J. D., and Wilson, W. E.: Formation and transport of secondary air pollutants: ozone and aerosols in the St. Louis urban plume, *Science*, 194, 187–189, 1976.
- Worden, J., Wecht, K., Frankenberg, C., Alvarado, M., Bowman, K., Kort, E., Kulawik, S., Lee, M., Payne, V., and Worden, H.: CH₄ and CO distributions over tropical fires during October 2006 as observed by the Aura TES satellite instrument and modeled by GEOS-Chem, *Atmos. Chem. Phys.*, 13, 3679–3692, <https://doi.org/10.5194/acp-13-3679-2013>, 2013.
- Worden, J. R., Turner, A. J., Bloom, A., Kulawik, S. S., Liu, J., Lee, M., Weidner, R., Bowman, K., Frankenberg, C., Parker, R., and Payne, V. H.: Quantifying lower tropospheric methane concentrations using GOSAT near-IR and TES ther-

- mal IR measurements, *Atmos. Meas. Tech.*, 8, 3433–3445, <https://doi.org/10.5194/amt-8-3433-2015>, 2015.
- Worden, J. R., Cusworth, D. H., Qu, Z., Yin, Y., Zhang, Y., Bloom, A. A., Ma, S., Byrne, B. K., Scarpelli, T., Maasackers, J. D., Crisp, D., Duren, R., and Jacob, D. J.: The 2019 methane budget and uncertainties at 1° resolution and each country through Bayesian integration Of GOSAT total column methane data and a priori inventory estimates, *Atmos. Chem. Phys.*, 22, 6811–6841, <https://doi.org/10.5194/acp-22-6811-2022>, 2022.
- Wunch, D., Toon, G. C., Blavier, J.-F. L., Washenfelder, R. A., Notholt, J., Connor, B. J., Griffith, D. W. T., Sherlock, V., and Wennberg, P. O.: The Total Carbon Column Observing Network, *Philos. T. R. Soc. A*, 369, 2087–2112, 2011.
- Yang, S., Lan, X., Talbot, R., and Liu, T.: Characterizing anthropogenic methane sources in the Houston and Barnett Shale areas of Texas using the isotopic signature $\delta^{13}\text{C}$ in CH_4 , *Sci. Total. Environ.*, 696, 133856, <https://doi.org/10.1016/j.scitotenv.2019.133856>, 2019.
- Yin, Y., Chevallier, F., Ciais, P., Bousquet, P., Saunois, M., Zheng, B., Worden, J., Bloom, A. A., Parker, R. J., Jacob, D. J., Dlugokencky, E. J., and Frankenberg, C.: Accelerating methane growth rate from 2010 to 2017: leading contributions from the tropics and East Asia, *Atmos. Chem. Phys.*, 21, 12631–12647, <https://doi.org/10.5194/acp-21-12631-2021>, 2021.
- Yu, X., Millet, D. B., and Henze, D. K.: How well can inverse analyses of high-resolution satellite data resolve heterogeneous methane fluxes? Observing system simulation experiments with the GEOS-Chem adjoint model (v35), *Geosci. Model Dev.*, 14, 7775–7793, <https://doi.org/10.5194/gmd-14-7775-2021>, 2021.
- Yuan, B., Kaser, L., Karl, T., Graus, M., Peischl, J., Campos, T. L., Shertz, S., Apel, E. C., Hornbrook, R. S., Hills, A., Gilman, J. B., Lerner, B. M., Warneke, C., Flocke, F. M., Ryerson, T. B., Guenther, A. B., and de Gouw, J. A.: Airborne flux measurements of methane and volatile organic compounds over the Haynesville and Marcellus shale gas production regions, *J. Geophys. Res.-Atmos.*, 120, 6271–6289, <https://doi.org/10.1002/2015JD023242>, 2015.
- Zhang, Y., Gautam, R., Pandey, S., Omara, M., Maasackers, J. D., Sadavarte, P., Lyon, D., Nesser, H., Sulprizio, M. P., Varon, D. J., Zhang, R., Houweling, S., Zavala-Araiza, D., Alvarez, R. A., Lorente, A., Hamburg, S. P., Aben, I., and Jacob, D. J.: Quantifying methane emissions from the largest oil-producing basin in the United States from space, *Sci. Adv.*, 6, 17, <https://doi.org/10.1126/sciadv.aaz5120>, 2020.
- Zhang, Y., Jacob, D. J., Lu, X., Maasackers, J. D., Scarpelli, T. R., Sheng, J.-X., Shen, L., Qu, Z., Sulprizio, M. P., Chang, J., Bloom, A. A., Ma, S., Worden, J., Parker, R. J., and Boesch, H.: Attribution of the accelerating increase in atmospheric methane during 2010–2018 by inverse analysis of GOSAT observations, *Atmos. Chem. Phys.*, 21, 3643–3666, <https://doi.org/10.5194/acp-21-3643-2021>, 2021.
- Zimmerle, D., Duggan, G., Vaughn, T., Bell, C., Lute, C., Bennett, K., Kimura, Y., Cardoso-Saldaña, F. J., and Allen, D. T.: Modeling air emissions from complex facilities at detailed temporal and spatial resolution: The Methane Emission Estimation Tool (MEET), *Sci. Total Environ.*, 824, 153653, <https://doi.org/10.1016/j.scitotenv.2022.153653>, 2022.