

CENTRE D'ESTUDIS AVANÇATS PER A L'OBSERVATORI
DE LA RESERVA DE LA BIOSFERA. BAQUEDANO, NAVARRA.
// PFC // T4 // Luis López Aznar

ÍNDIX

01.PROGRAMA

02.APROXIMACIÓ

03.CONCEPTE

04.PROJECTE

05.SOLUCIONS CONSTRUCTIVES

06.STRUCTURA

01.PROGRAMA

02.APROXIMACIÓ

03.CONCEPTE

04.PROJECTE

05.CONSTRUCCIÓ

06.STRUCTURA

Què són les reserves de la biosfera?

Zones d'ecosistemes terrestres o costaner/marins, o una combinació d'aquests, reconeguts internacionalment per la UNESCO.

Tenen com a finalitat convertir-se en models de com hauríem de conviure amb la natura i assigna a aquests territoris tres funcions bàsiques:

- Funció de **conservació**: mantenir diversitat biològica.
- Funció de **desenvolupament**: promoure el desenvolupament econòmic i humà.
- Funció de **logística, investigació científica** i seguiment davant la **conservació** i el **desenvolupament sostenible**.

PROGRAMA

El programa requerit per al centre d'estudis envolta els 1600 m² i consta de les següents parts:

- Una biblioteca amb area d'estudi individual per a 20 investigadors i zona d'estudi i consulta general.
- Arxiu
- 4 sales per a seminaris de 25 m² cadascuna.
- Sala de conferències per a 100 persones i usos múltiples.
- 2 departaments amb despatx i espai per a becaris.
- Laboratori de 100 m².
- Magatzem.
- Petita area de descans.
- Administració i direcció.

- Una biblioteca amb area d'estudi individual per a 20 investigadors i zona d'estudi i consulta general.
- Arxiu

- 4 sales per a seminaris de 25 m² cadascuna.
- Sala de conferències per a 100 persones i usos múltiples.

- 2 departaments amb despatx i espai per a becaris.
- Laboratori de 100 m².
- Magatzem.
- Administració i direcció.

- Una biblioteca amb area d'estudi individual per a 20 investigadors i zona d'estudi i consulta general.
- Arxiu

recerca documental
fons bibliotecari
documentació

- 4 sales per a seminaris de 25 m² cadascuna.
- Sala de conferències per a 100 persones i usos múltiples.

publicitació reserva biosfera

ensenyança /aprenentage

reunió

sala usos múltiples

administració institucional
recerca instrumental
reunió
administaració investigació

- 2 departaments amb despatx i espai per a becaris.
- Laboratori de 100 m².
- Magatzem.
- Administració i direcció.

01.PROGRAMA

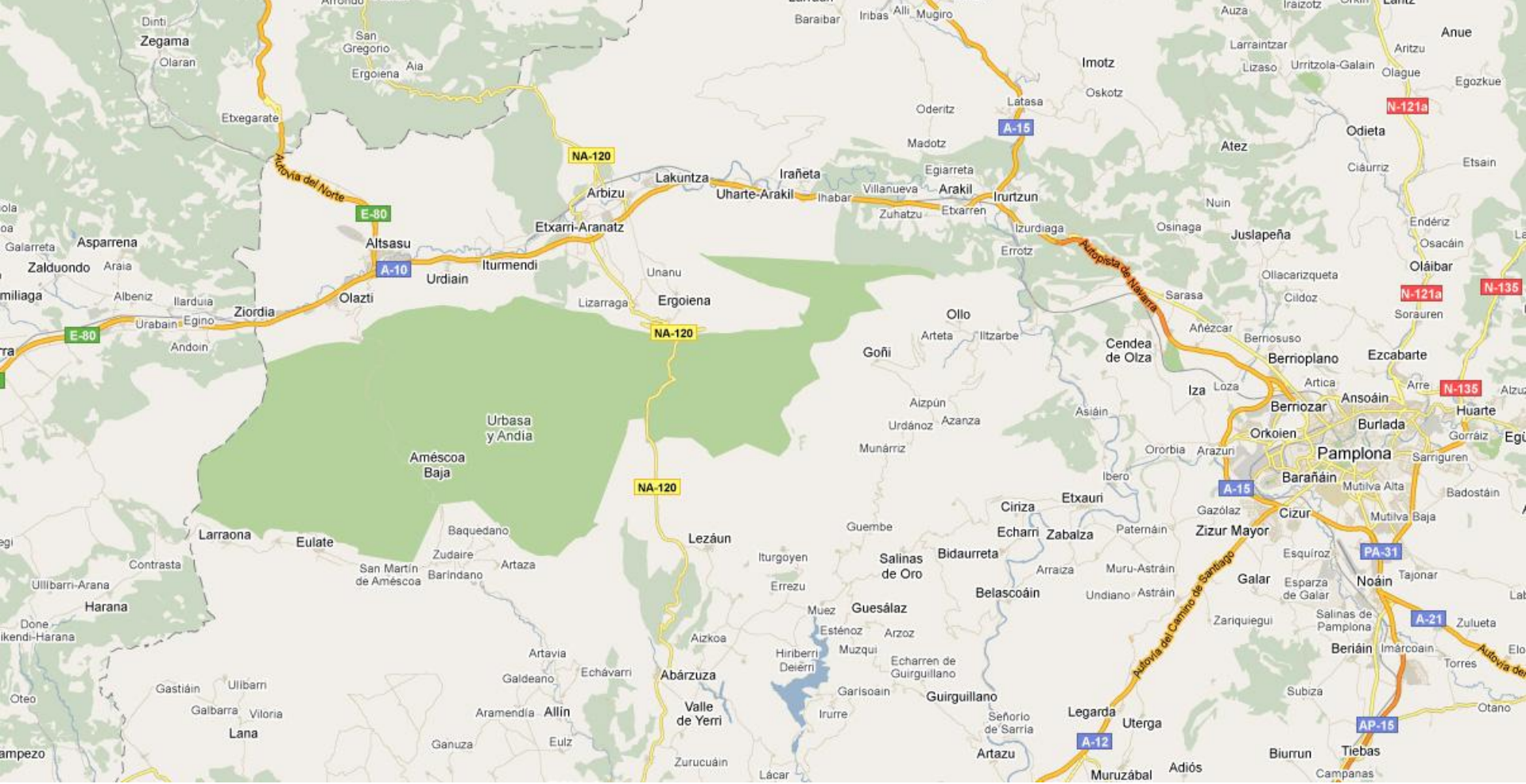
02.APROXIMACIÓ

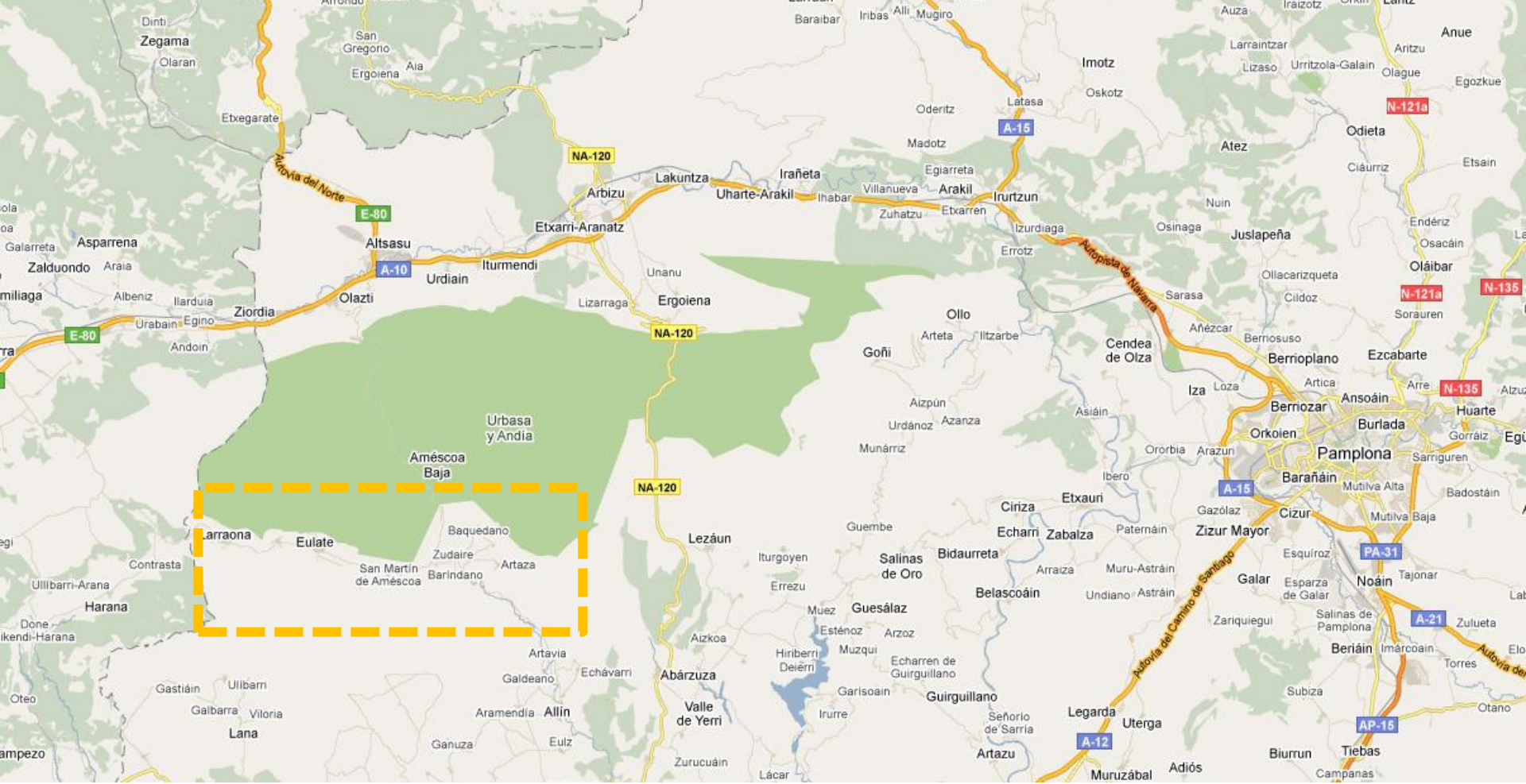
03.CONCEPTE

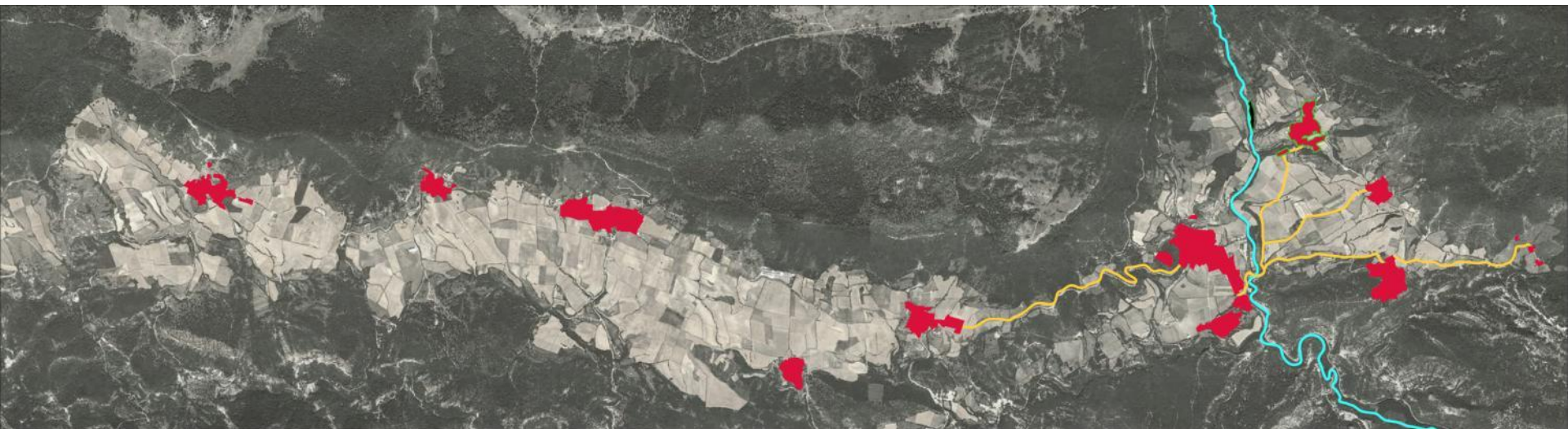
04.PROJECTE

05.SOLUCIONS CONSTRUCTIVES

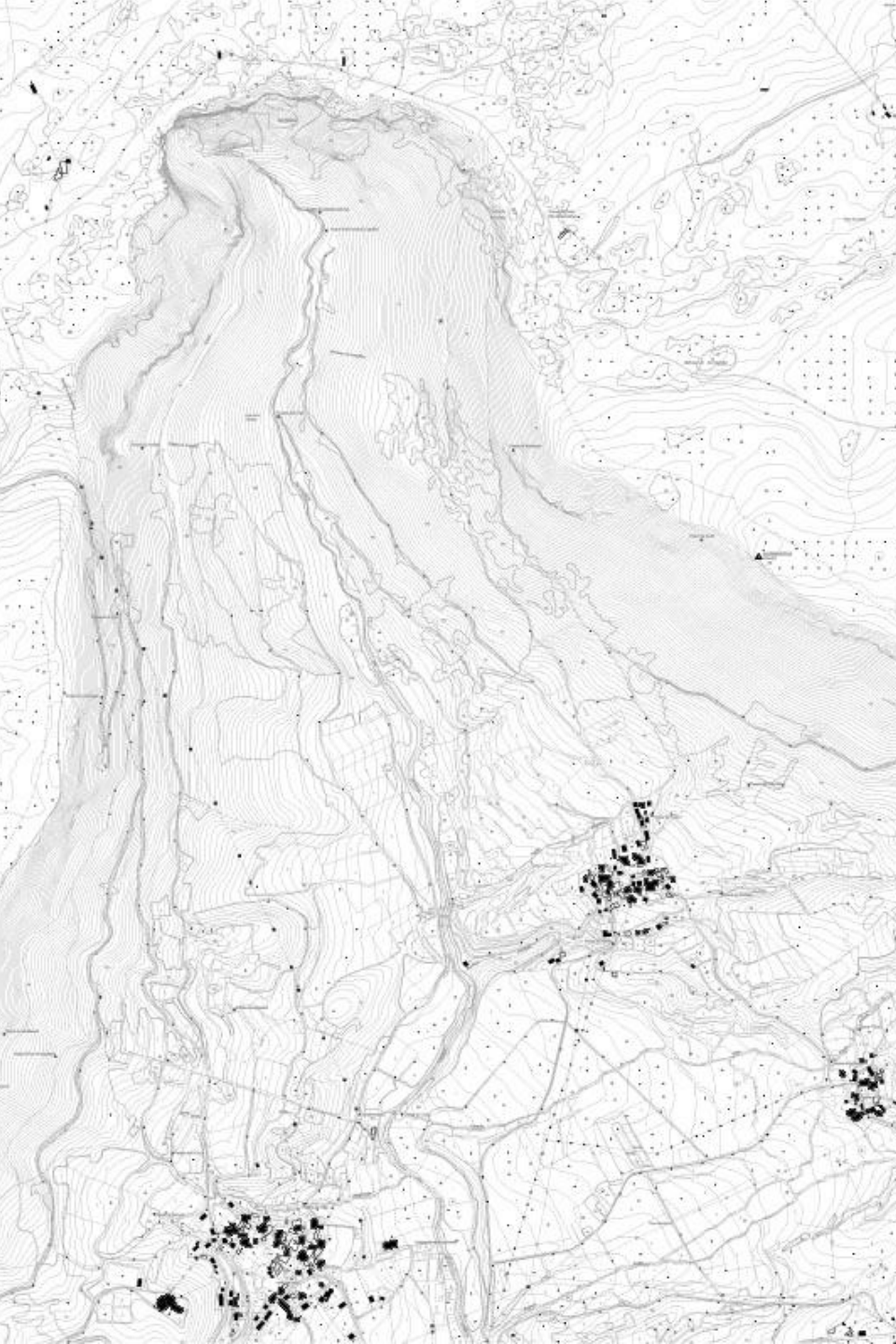
06.STRUCTURA

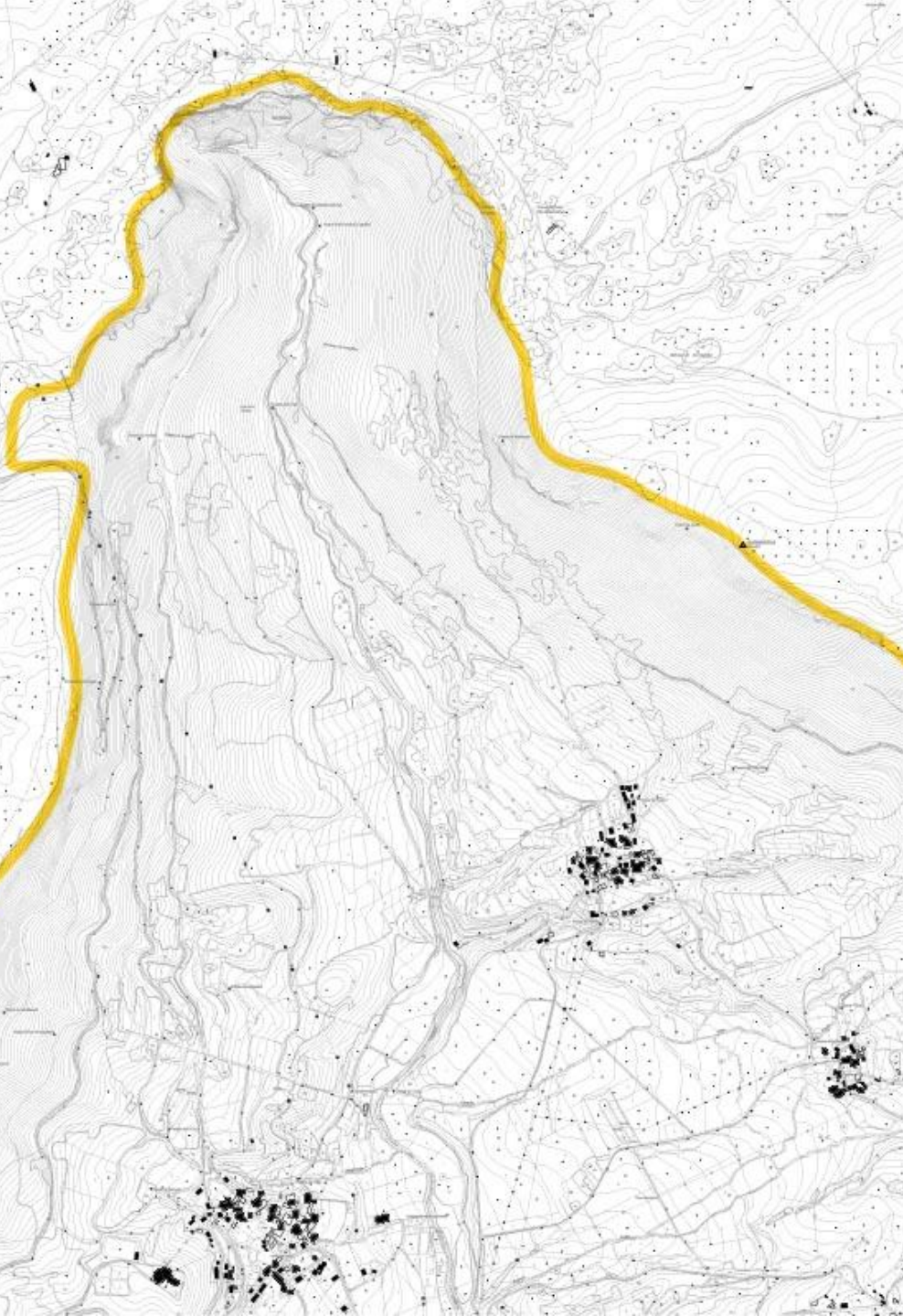


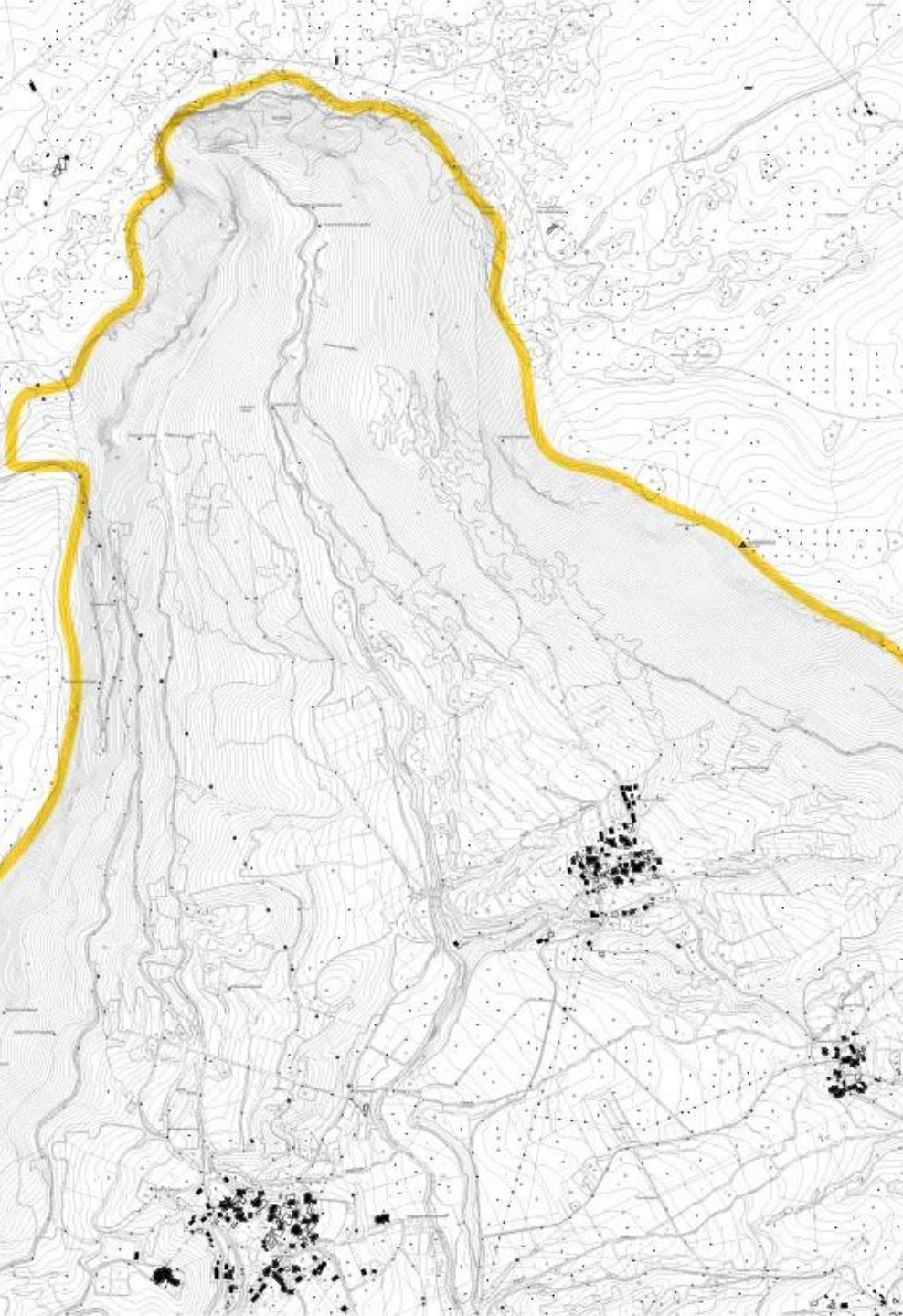


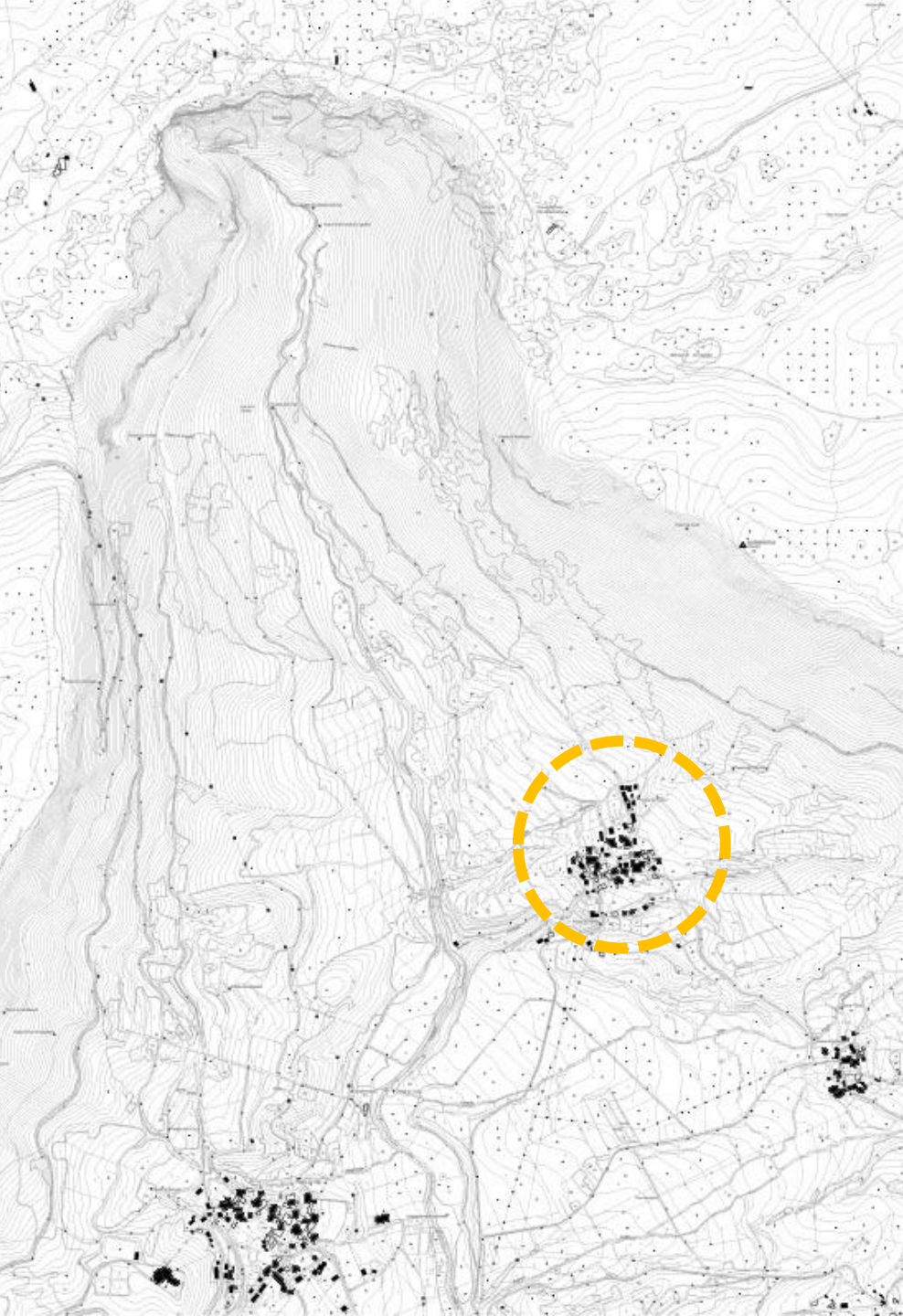










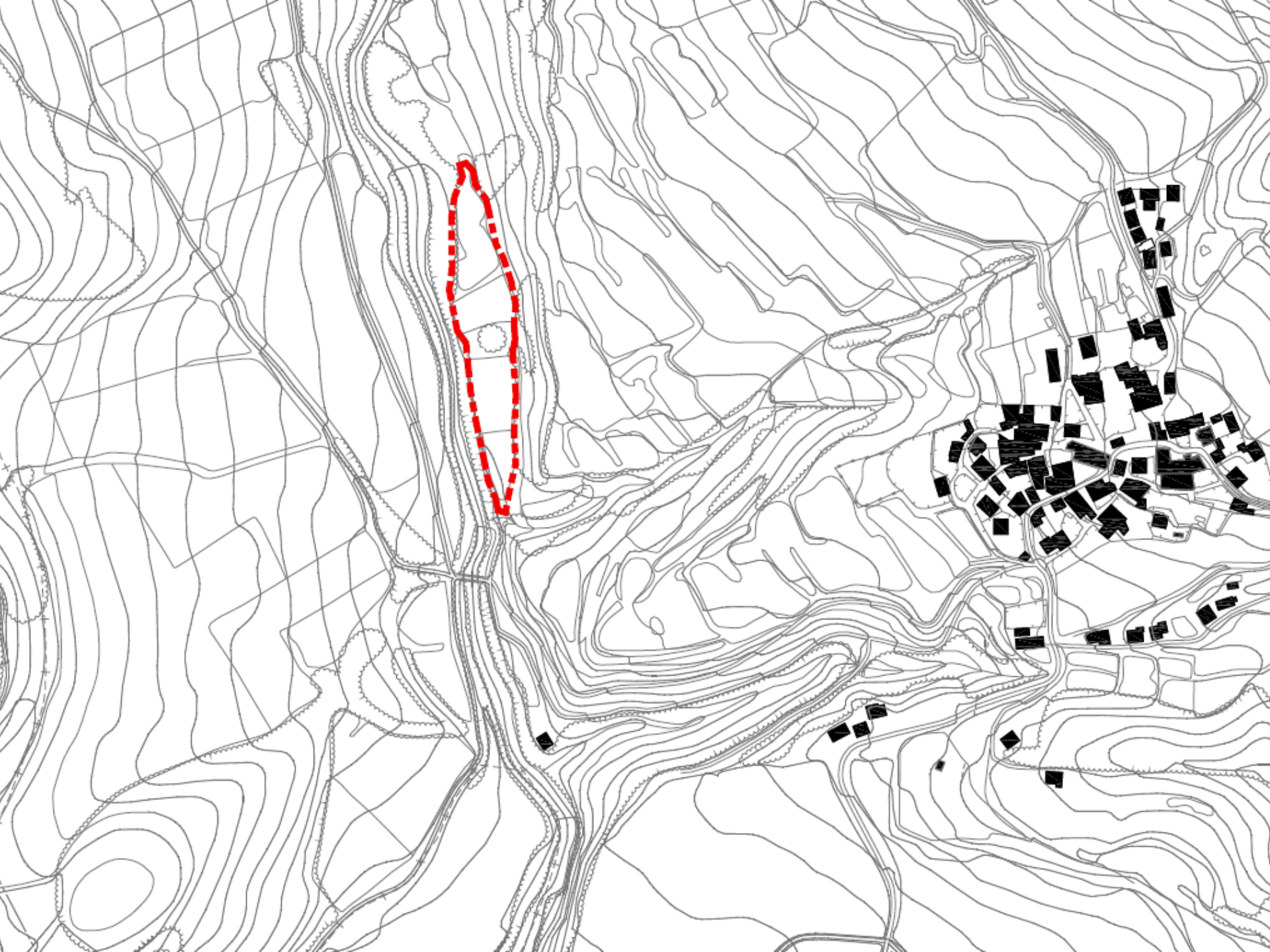


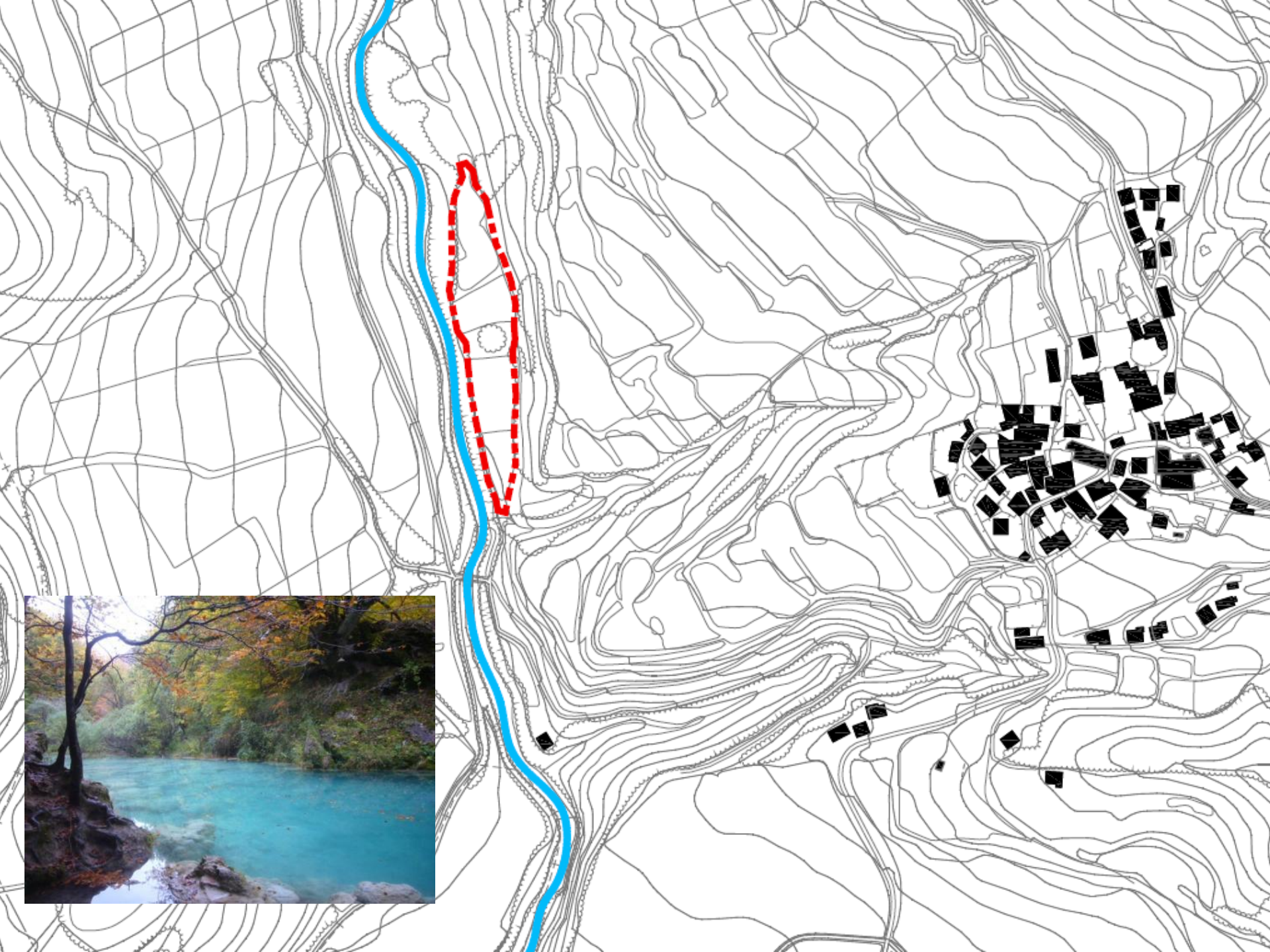


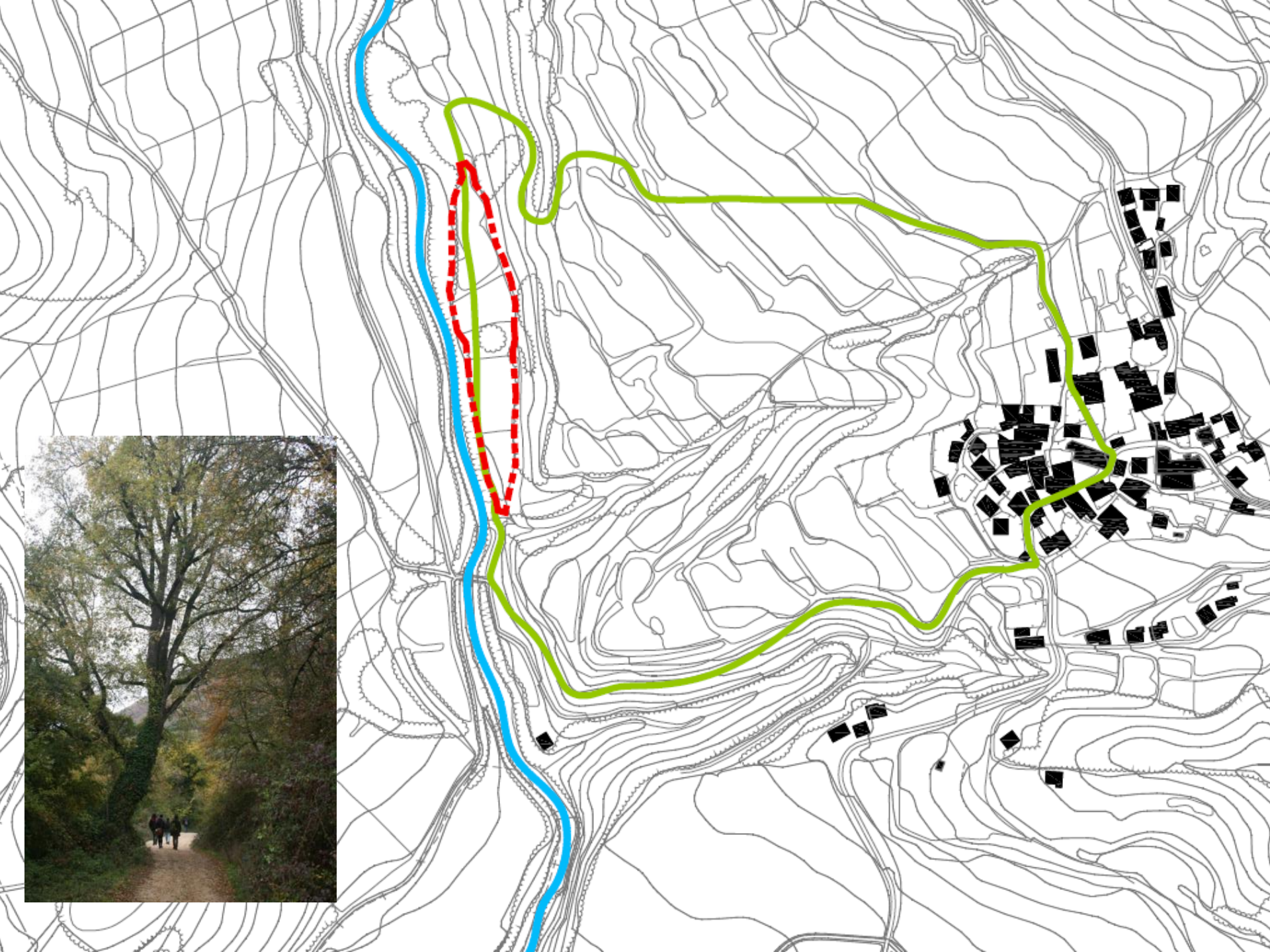














01.PROGRAMA

02.APROXIMACIÓ

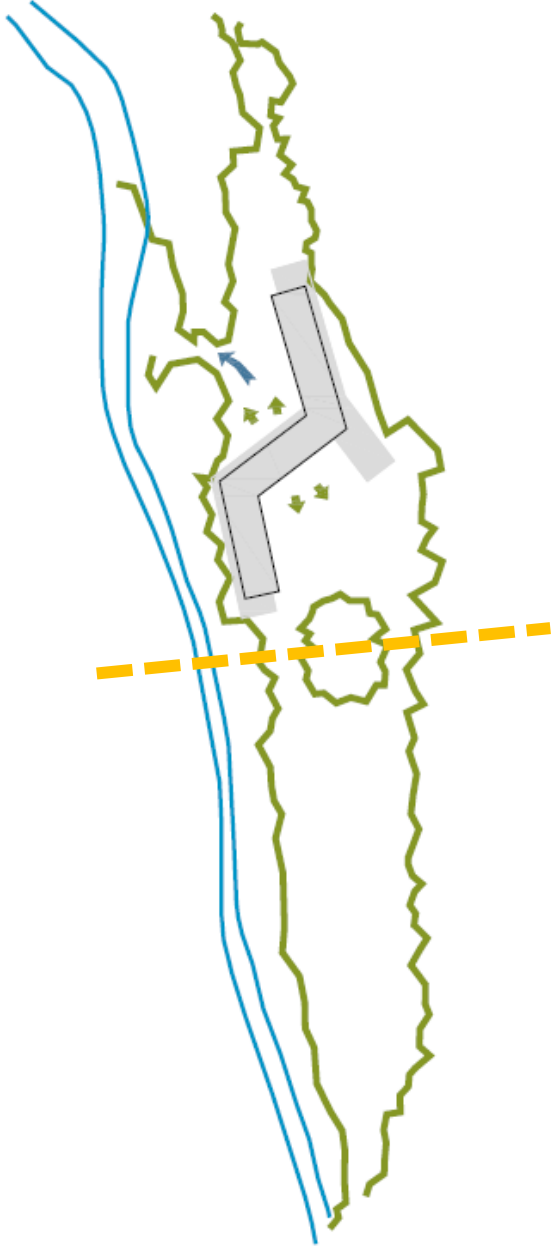
03.CONCEPTE

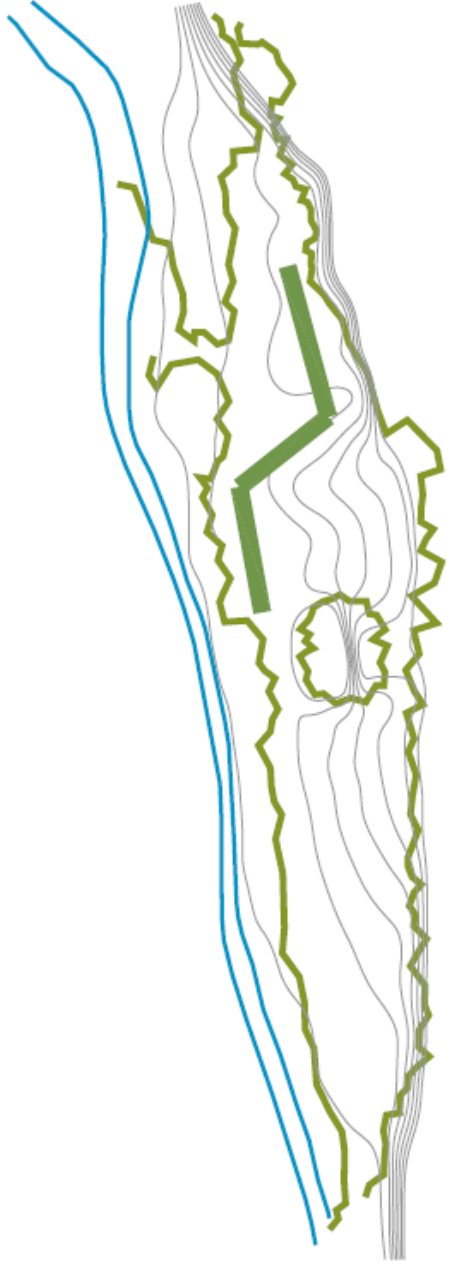
04.PROJECTE

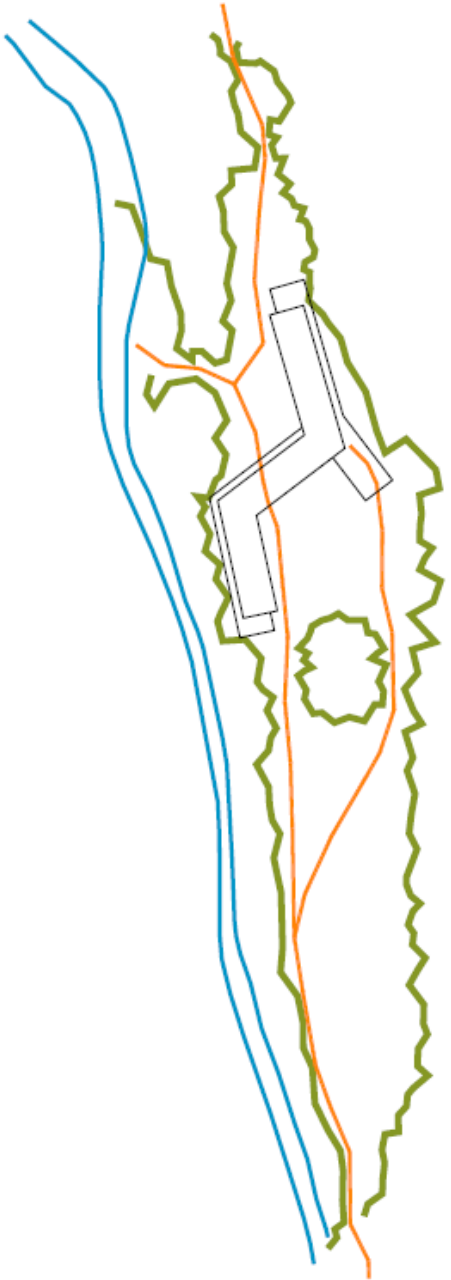
05.SOLUCIONS CONSTRUCTIVES

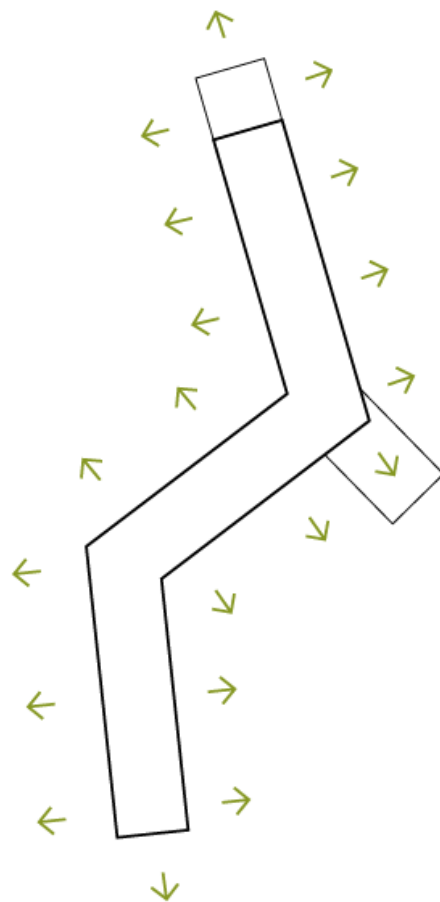
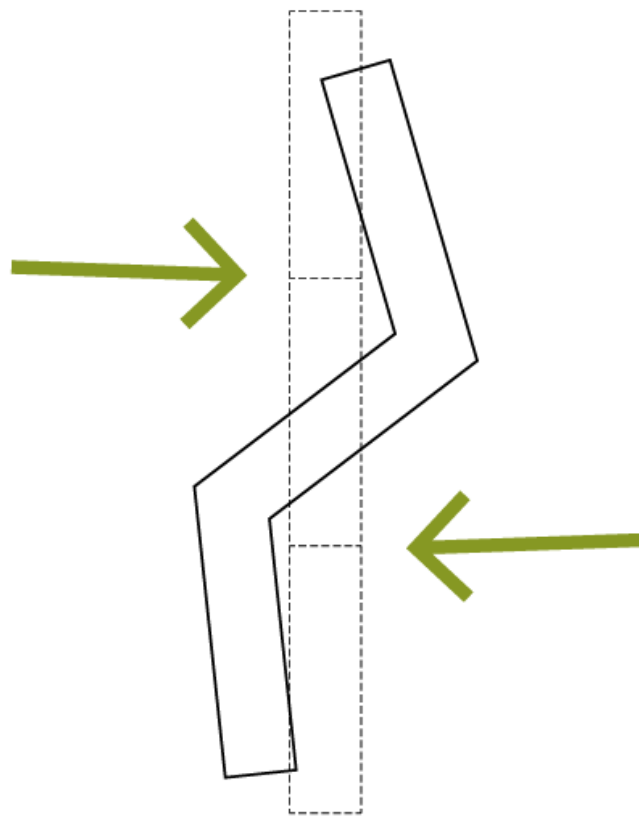
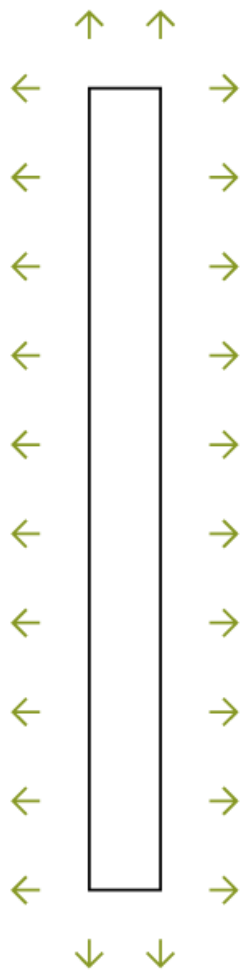
06.STRUCTURA











01.PROGRAMA

02.APROXIMACIÓ

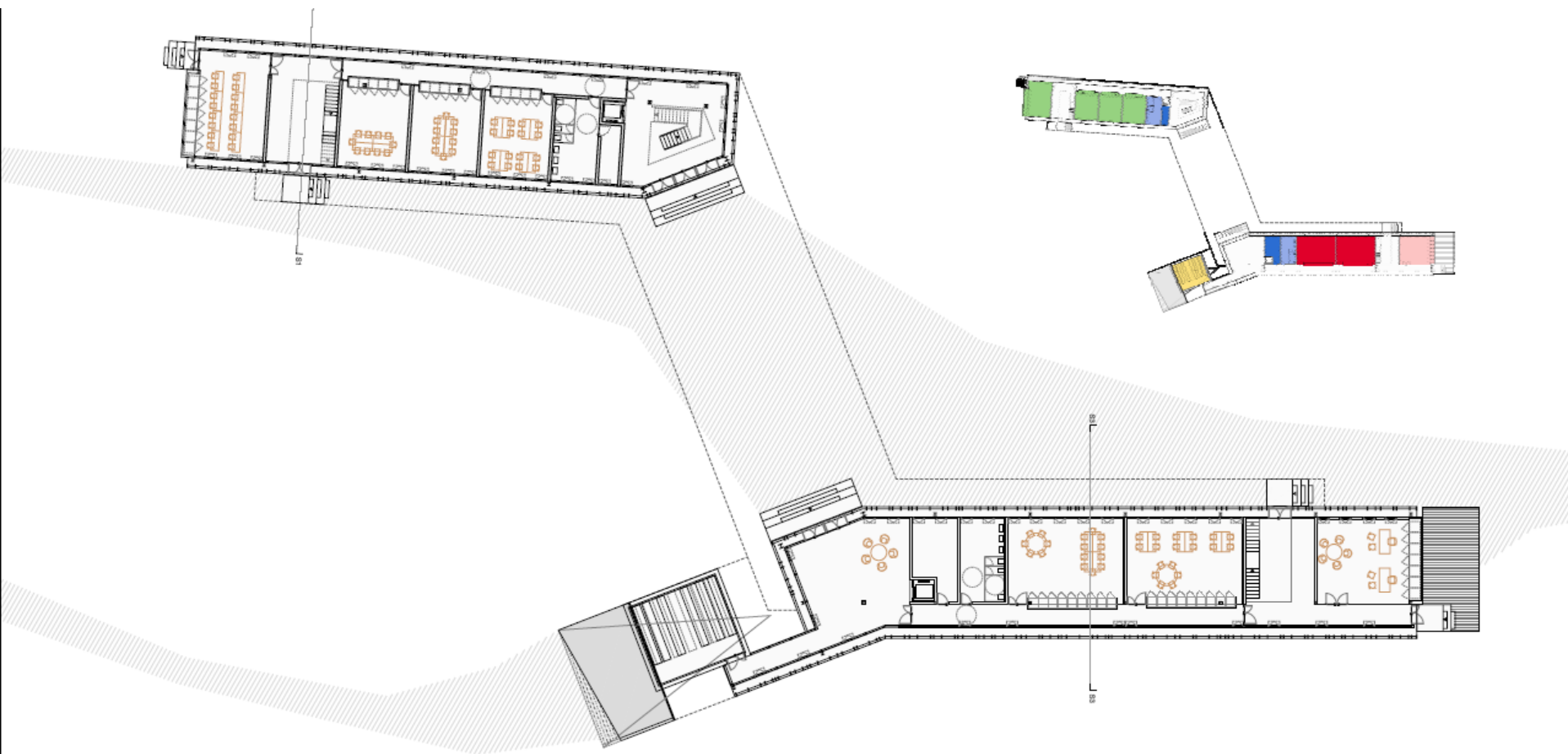
03.CONCEPTE

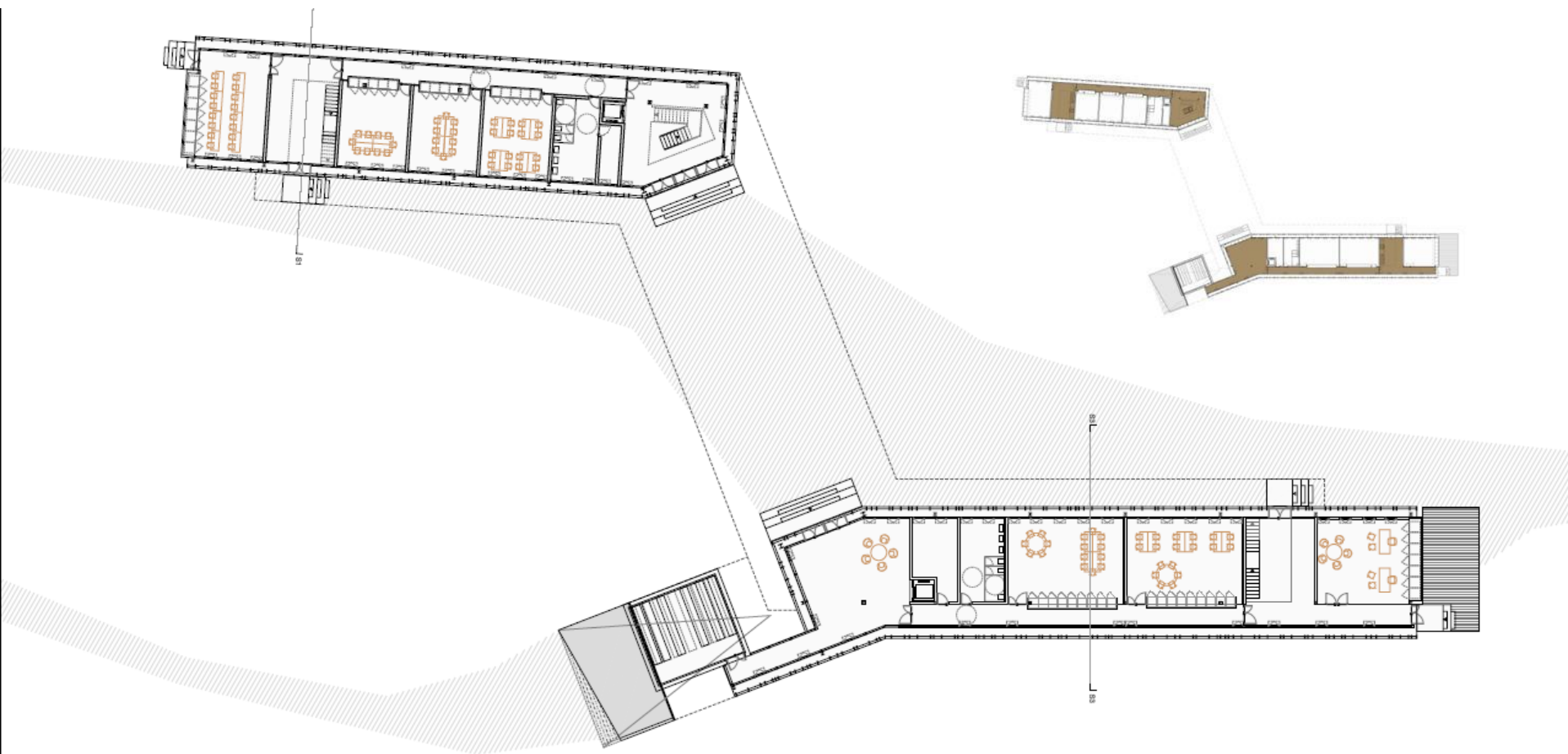
04.PROJECTE

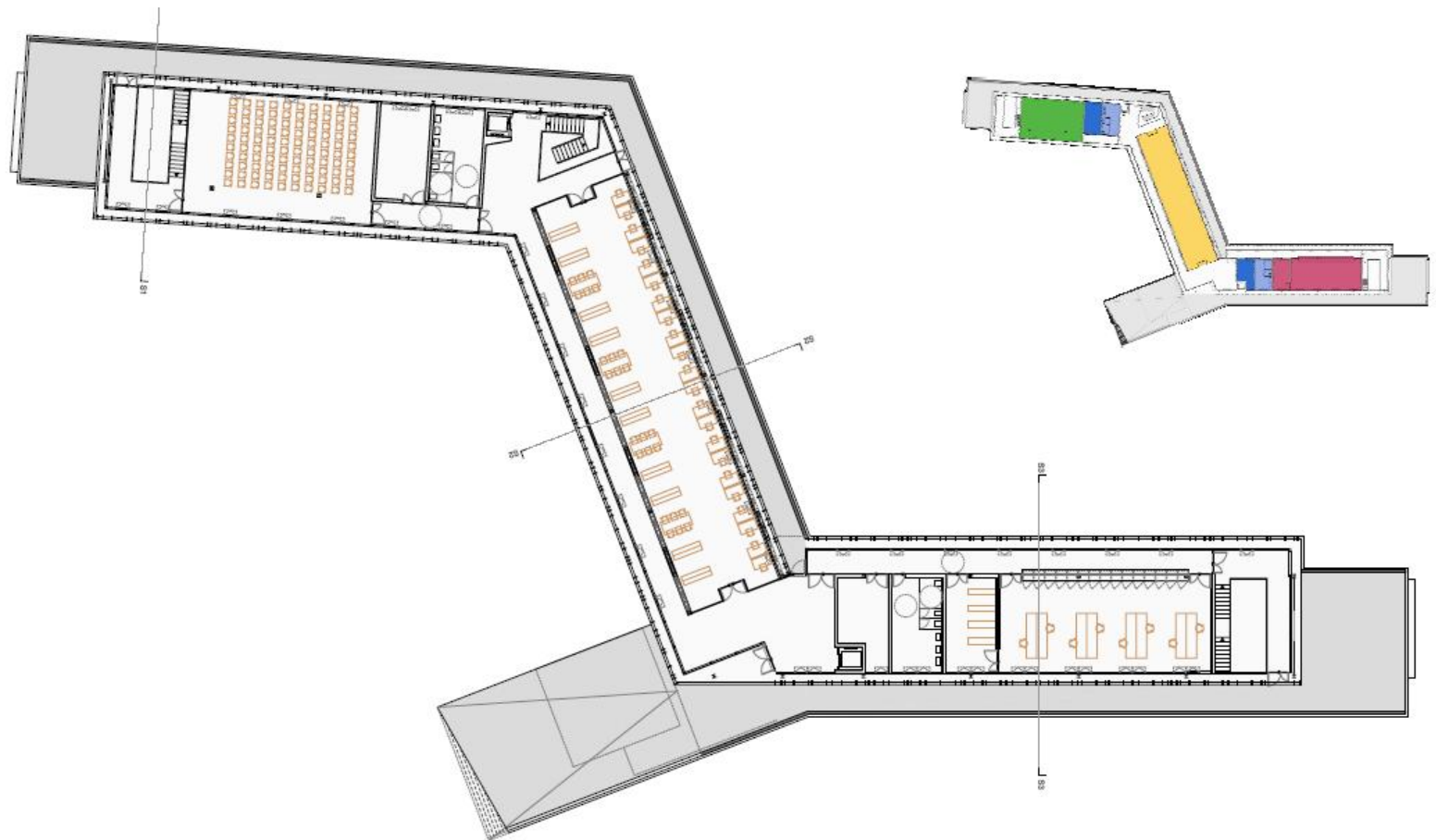
05.SOLUCIONS CONSTRUCTIVES

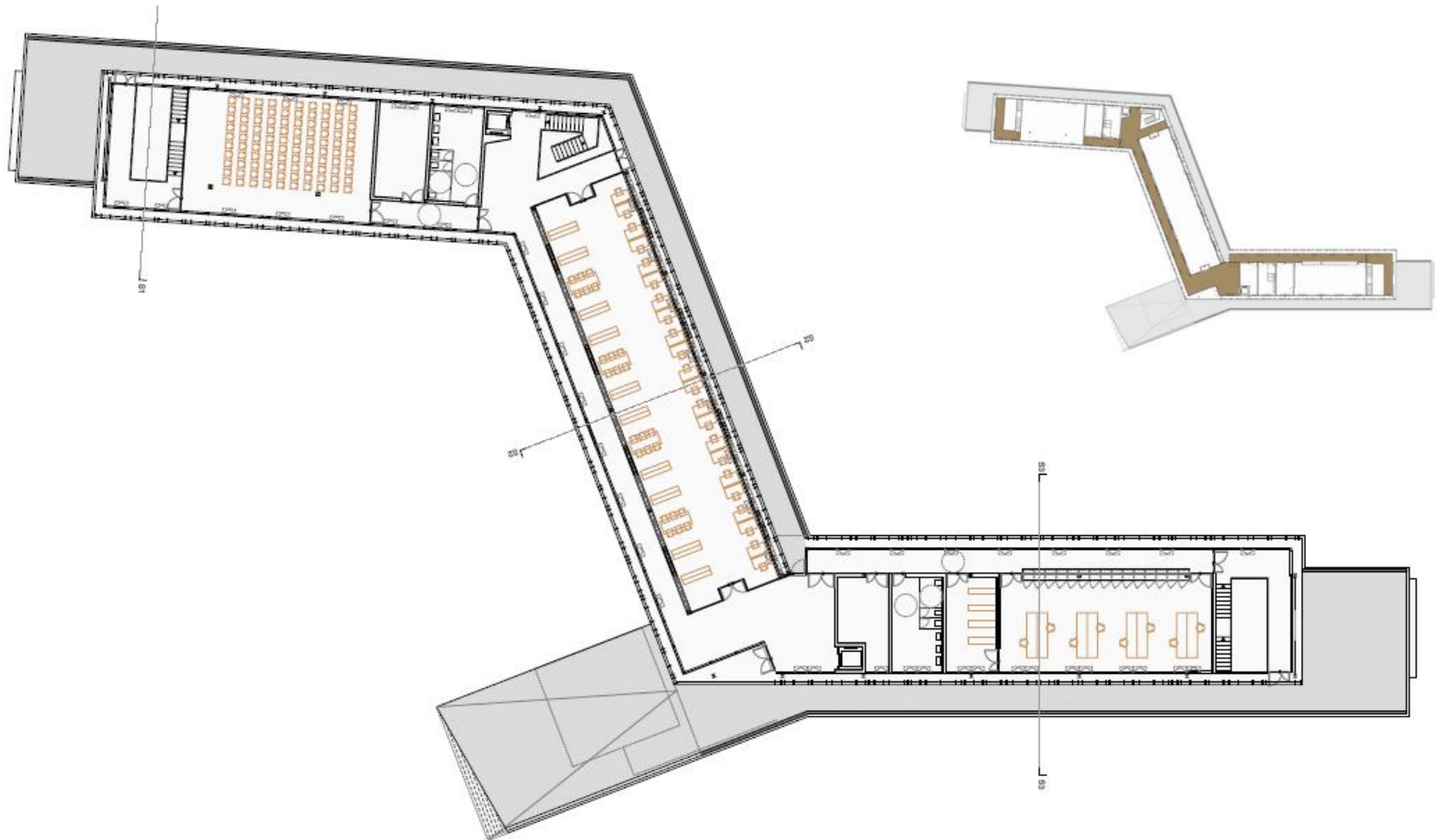
06.STRUCTURA

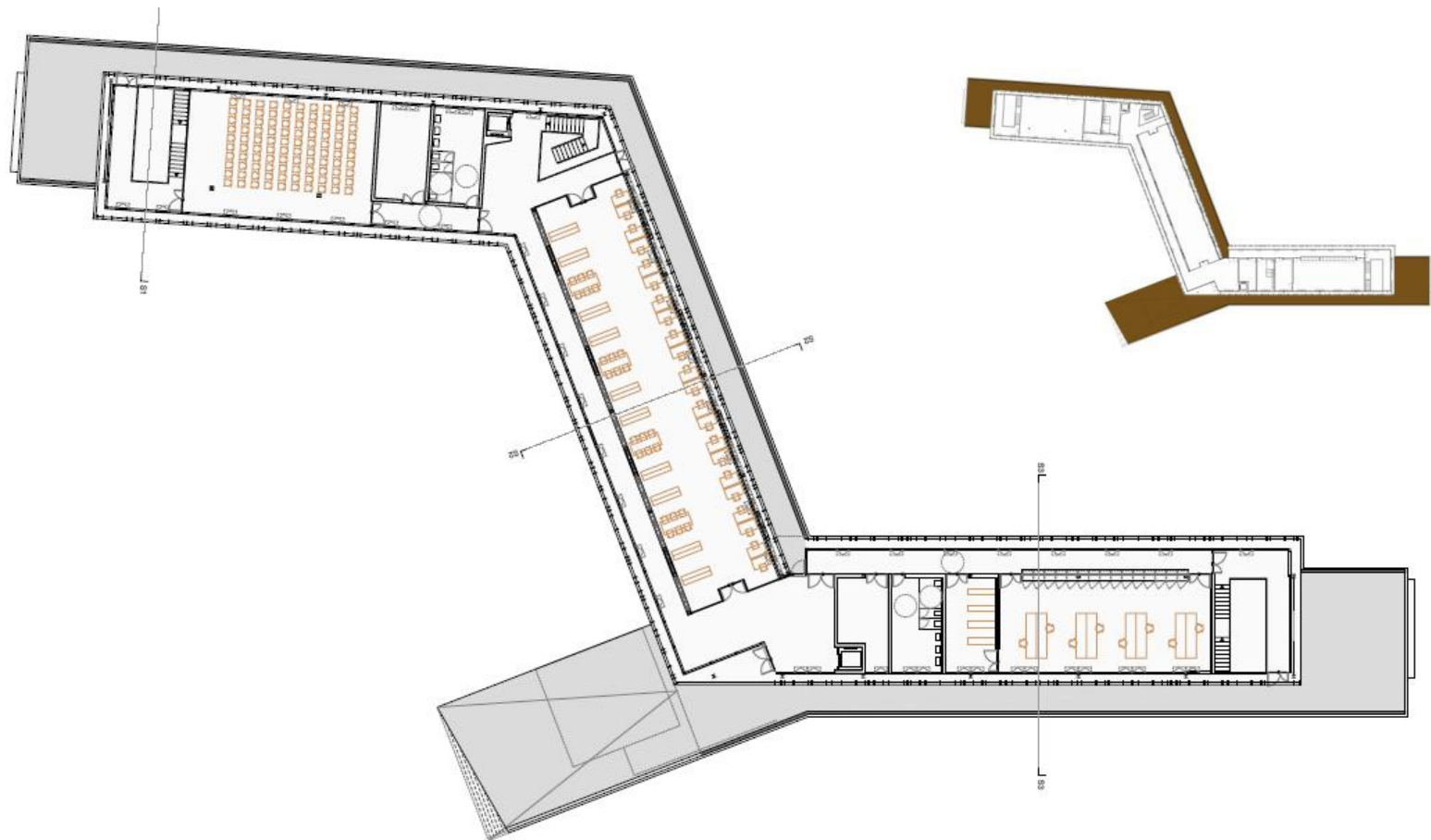


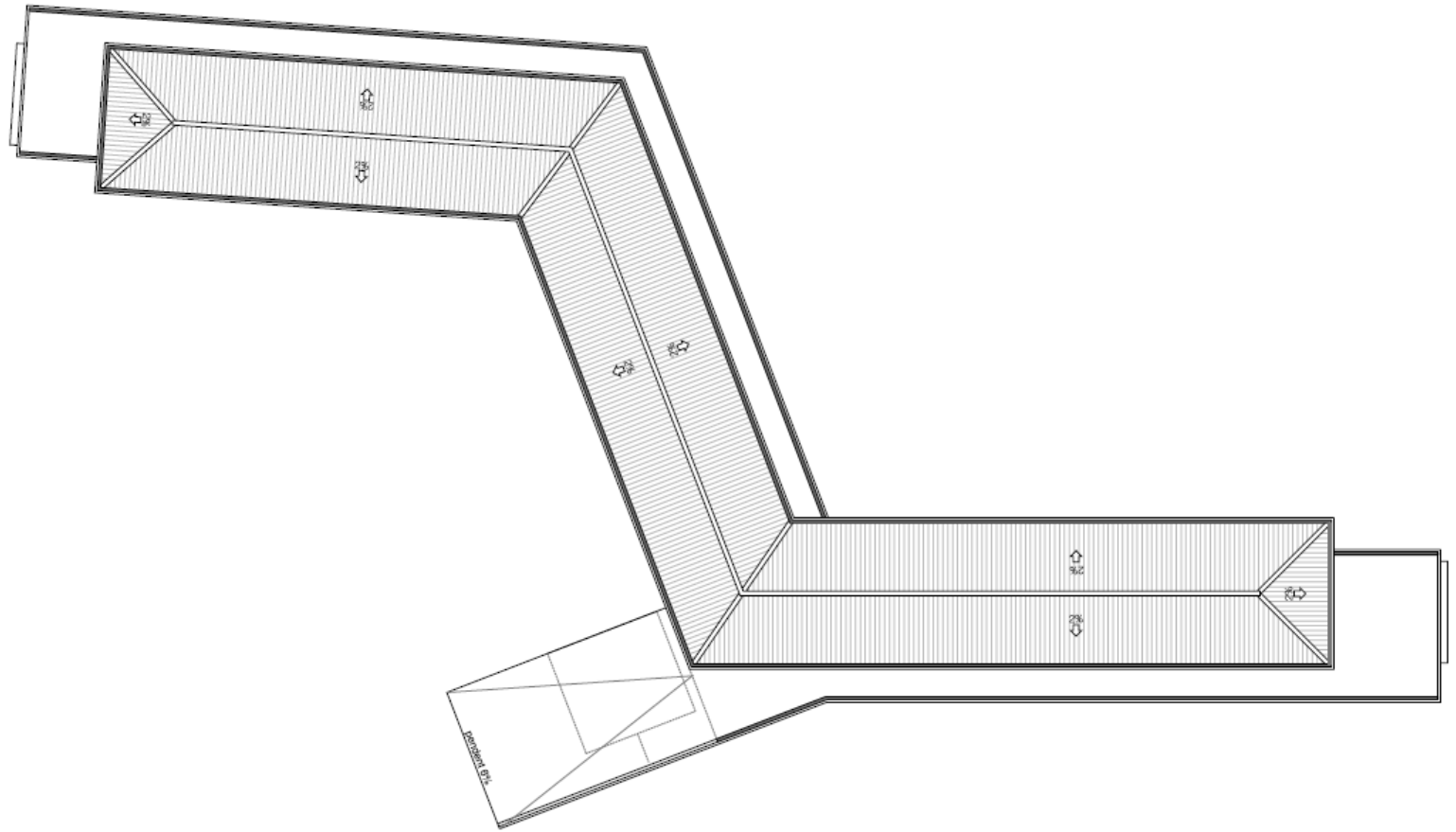


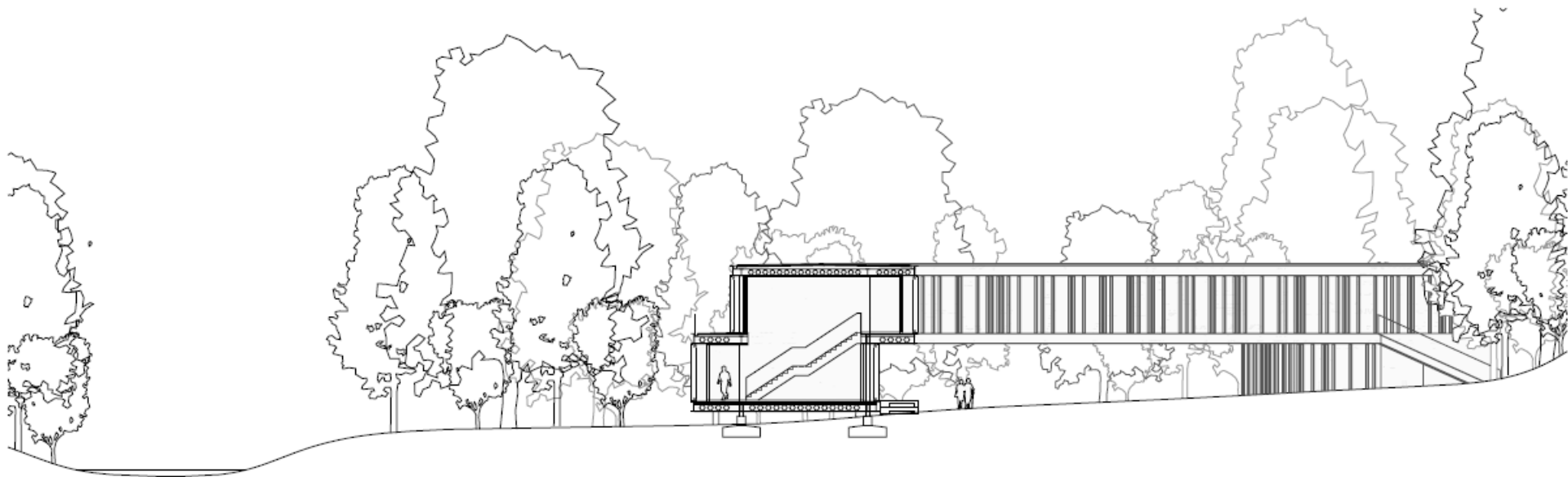
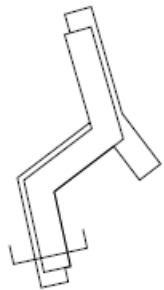


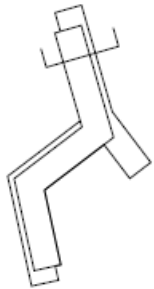


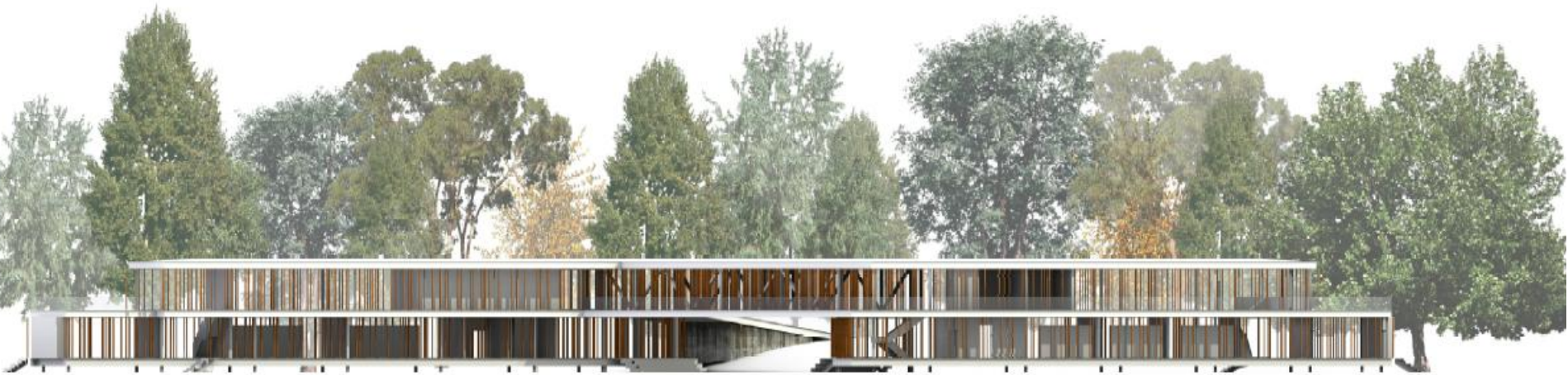
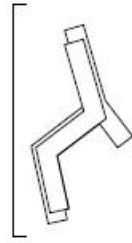


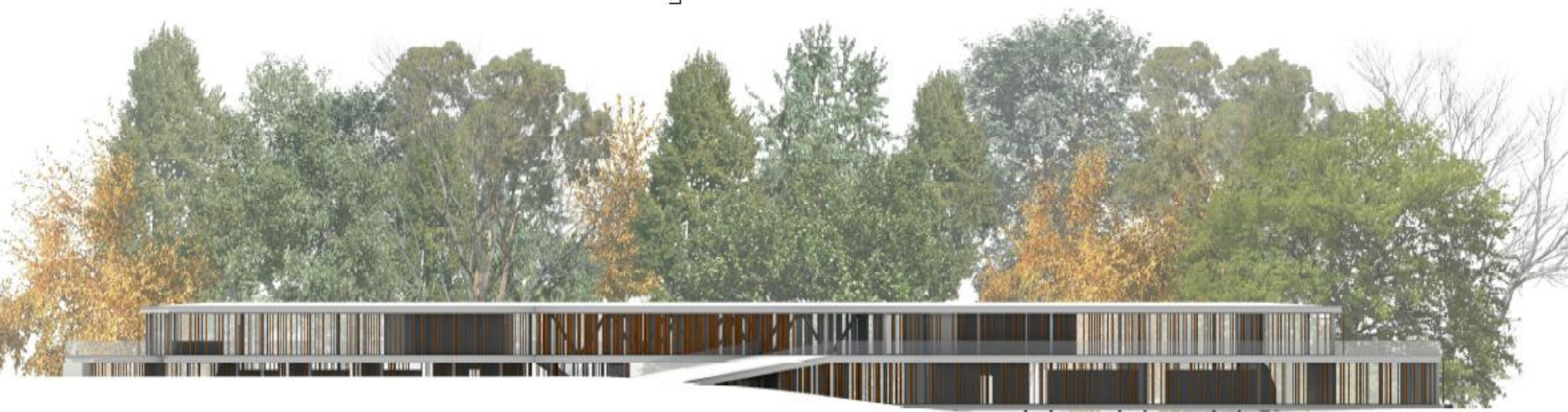
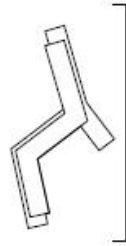


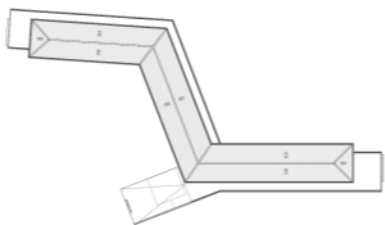


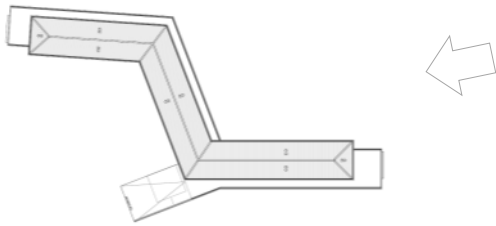


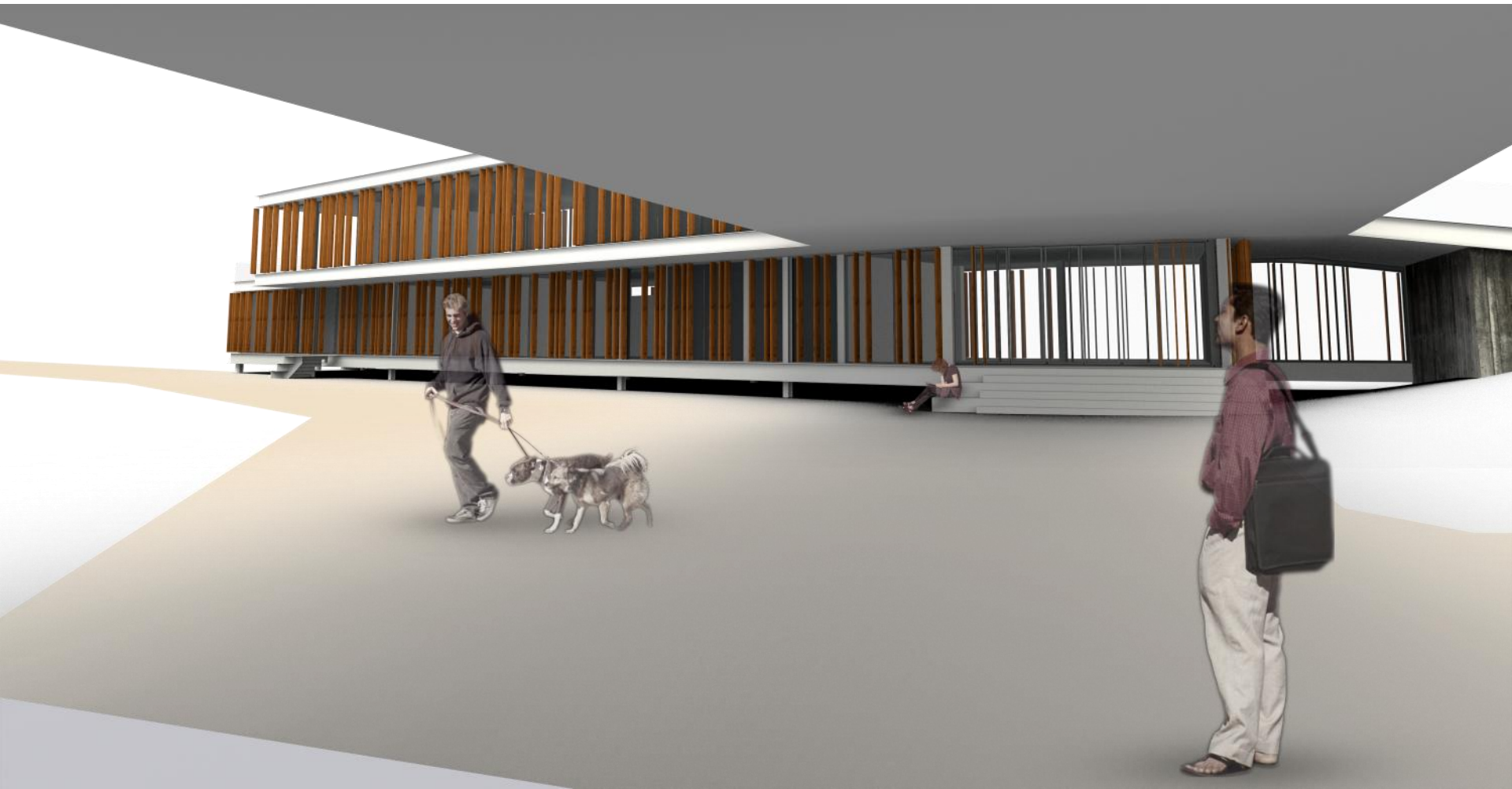




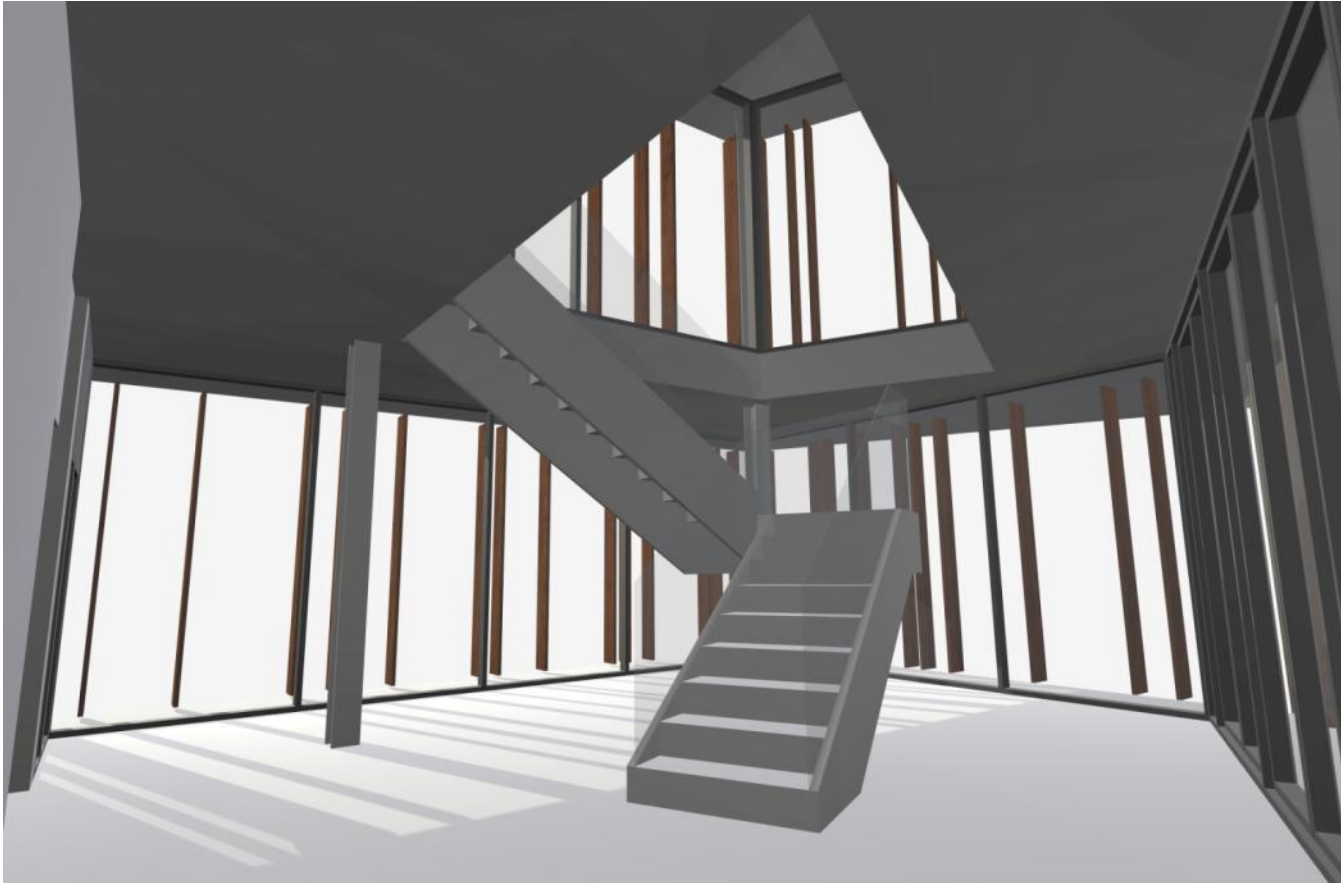
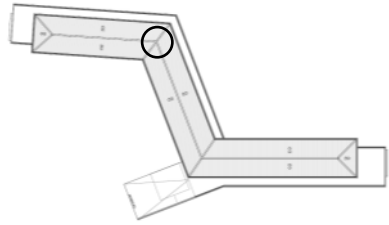


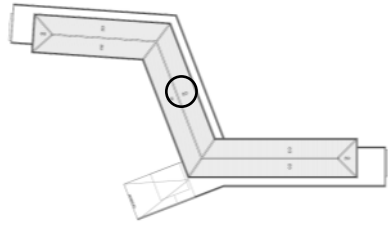












01.PROGRAMA

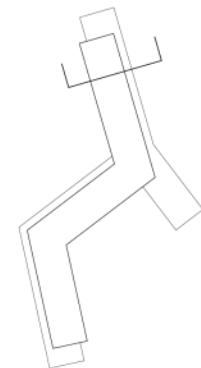
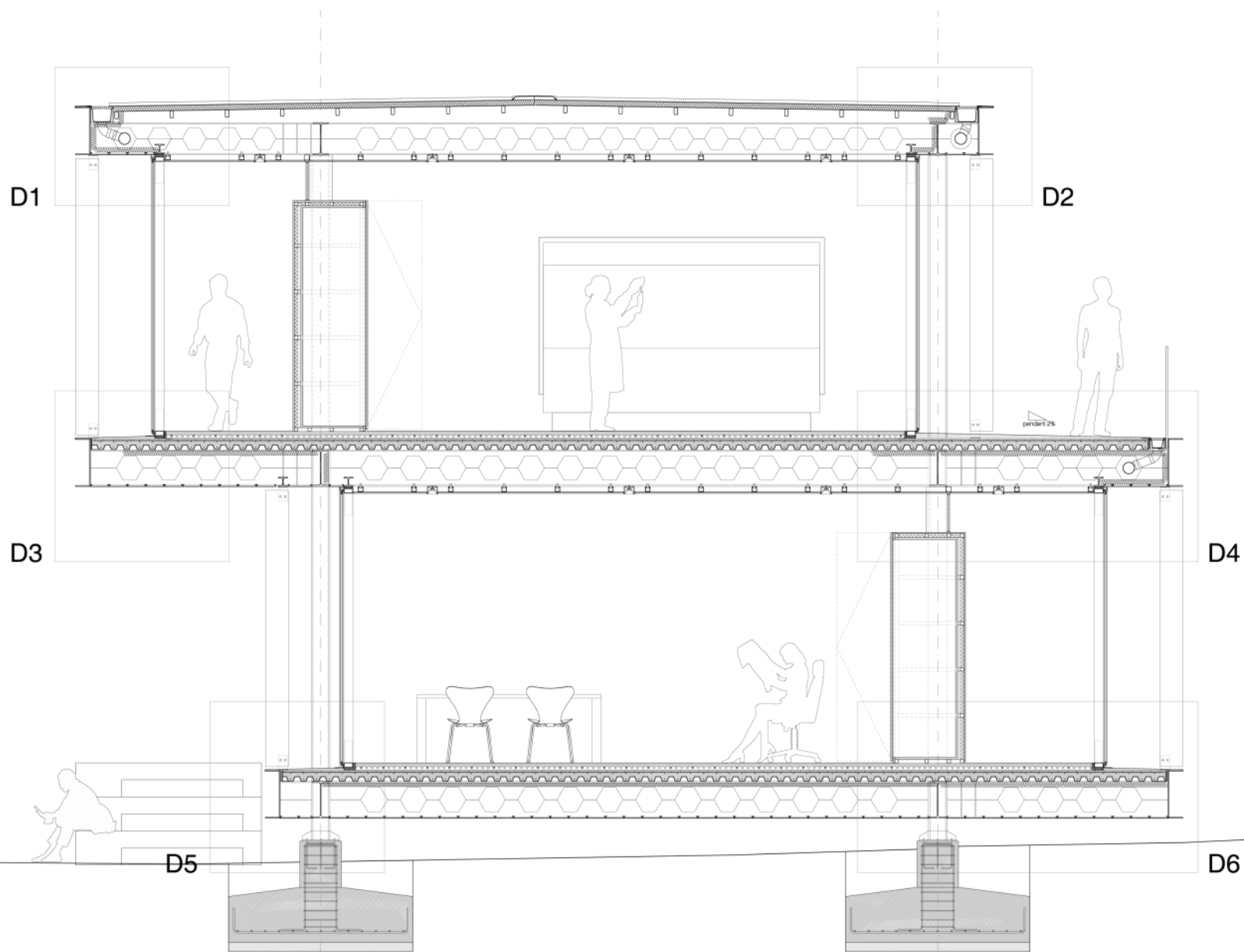
02.APROXIMACIÓ

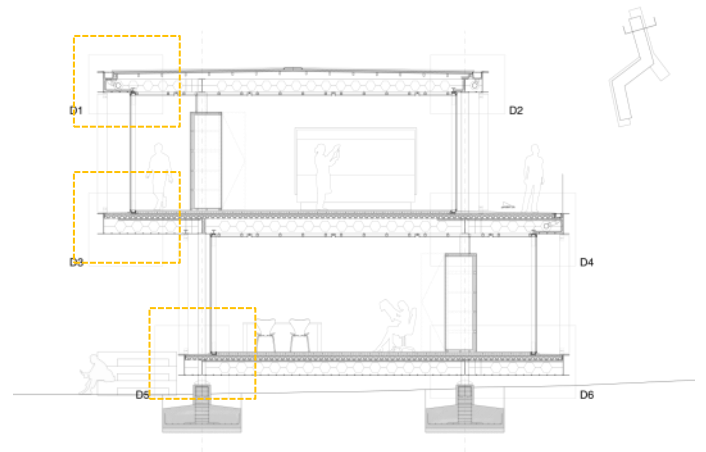
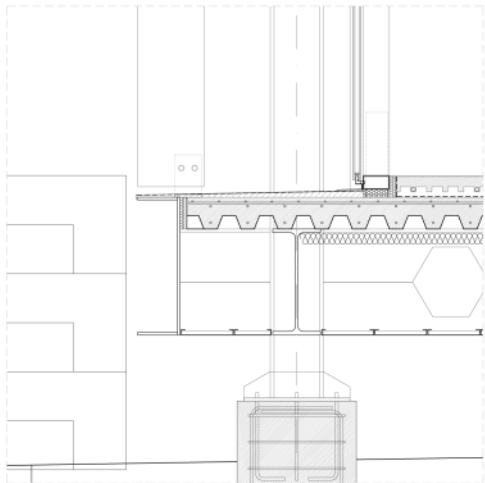
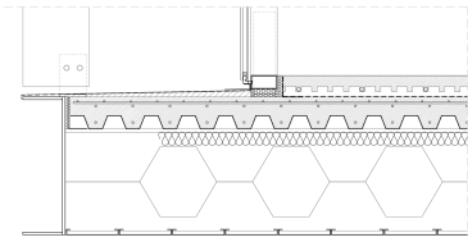
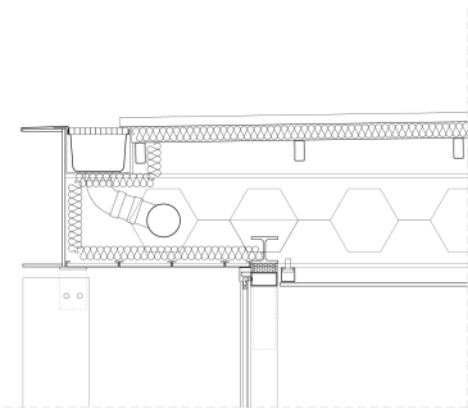
03.CONCEPTE

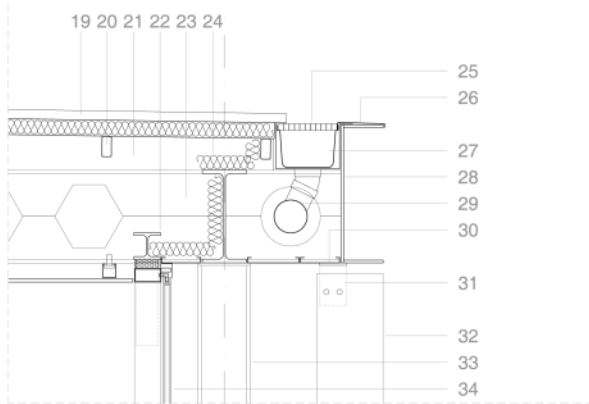
04.PROJECTE

05.SOLUCIONS CONSTRUCTIVES

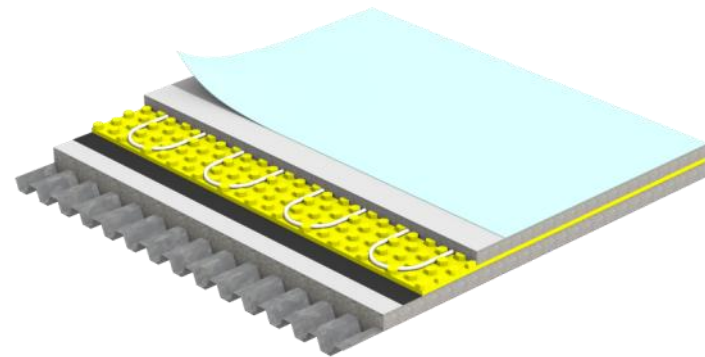
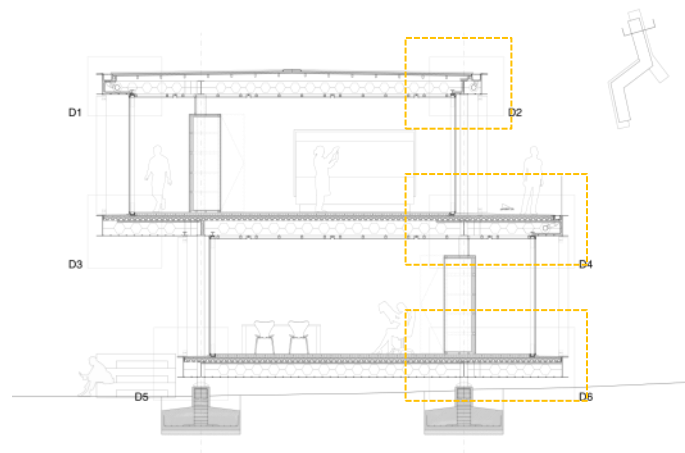
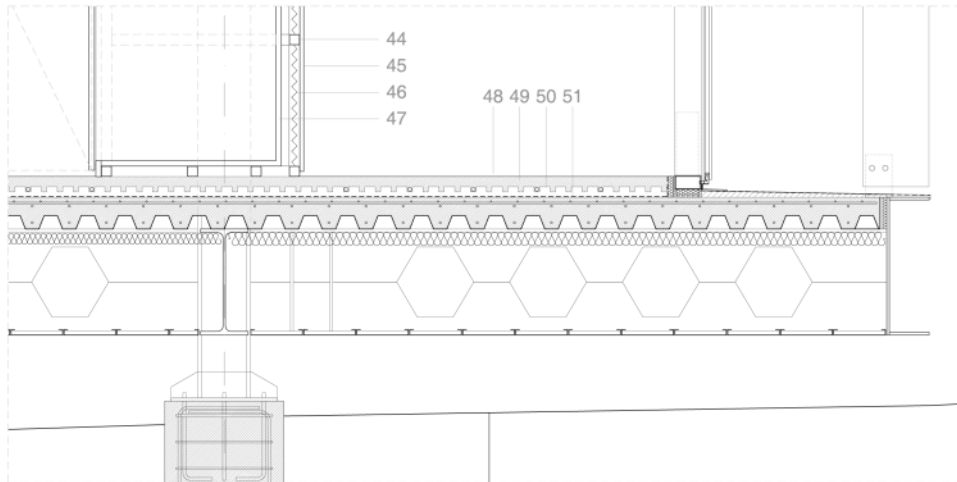
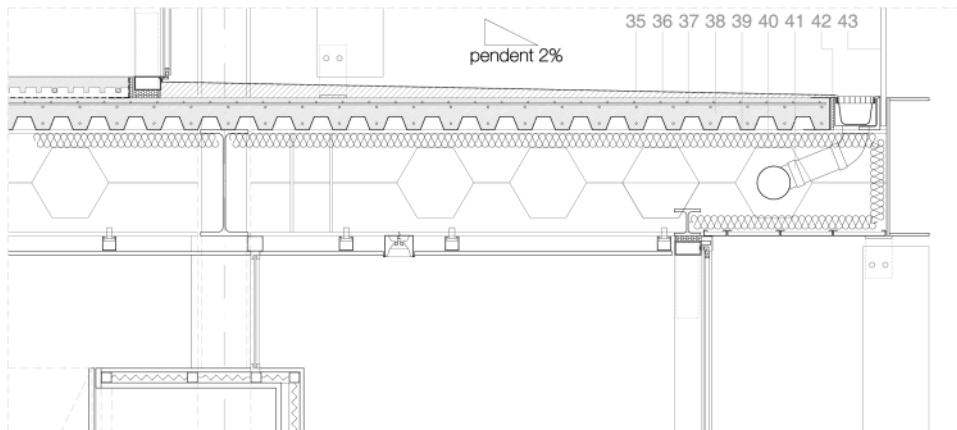
06.STRUCTURA

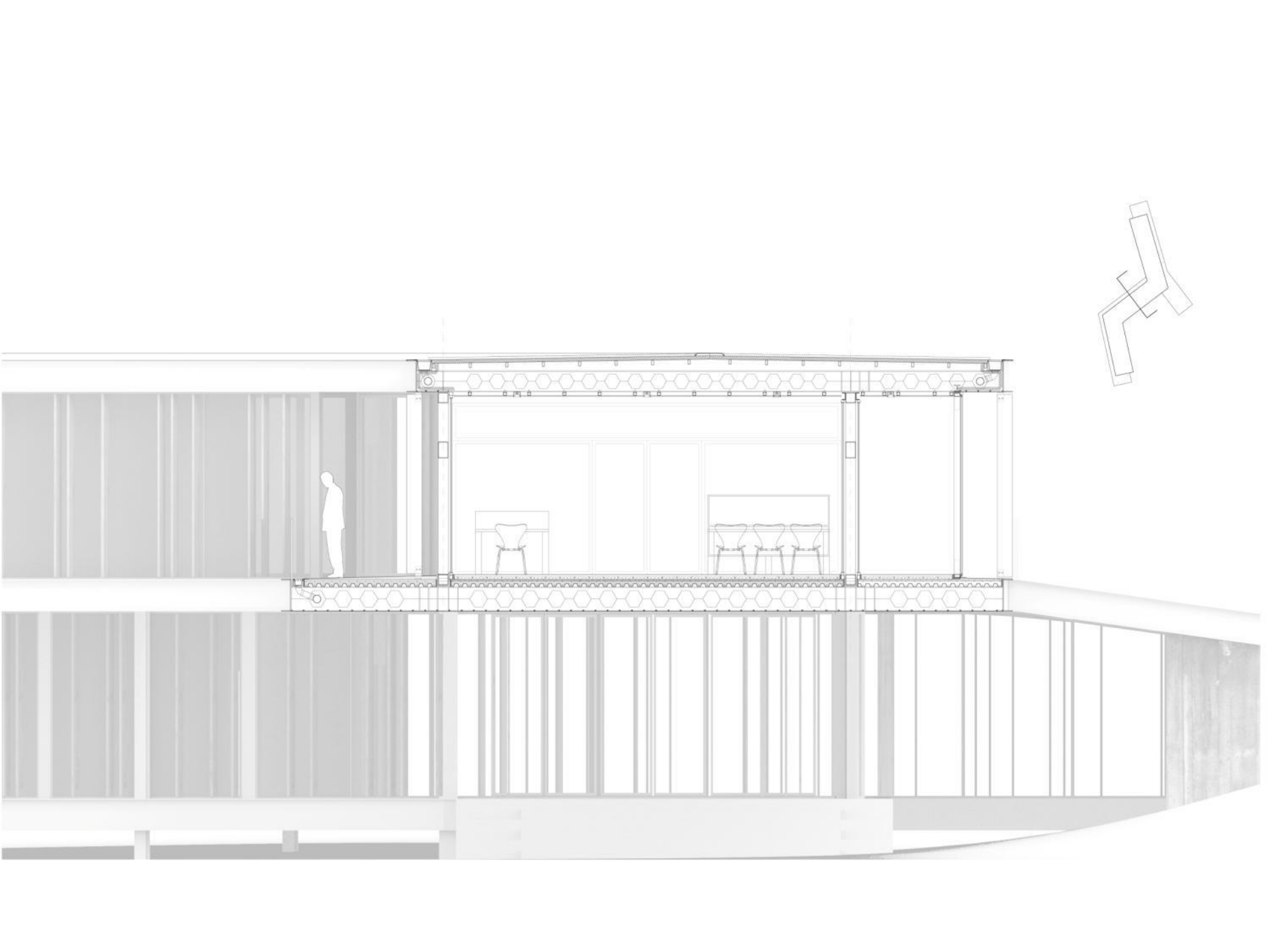






D2





01.PROGRAMA

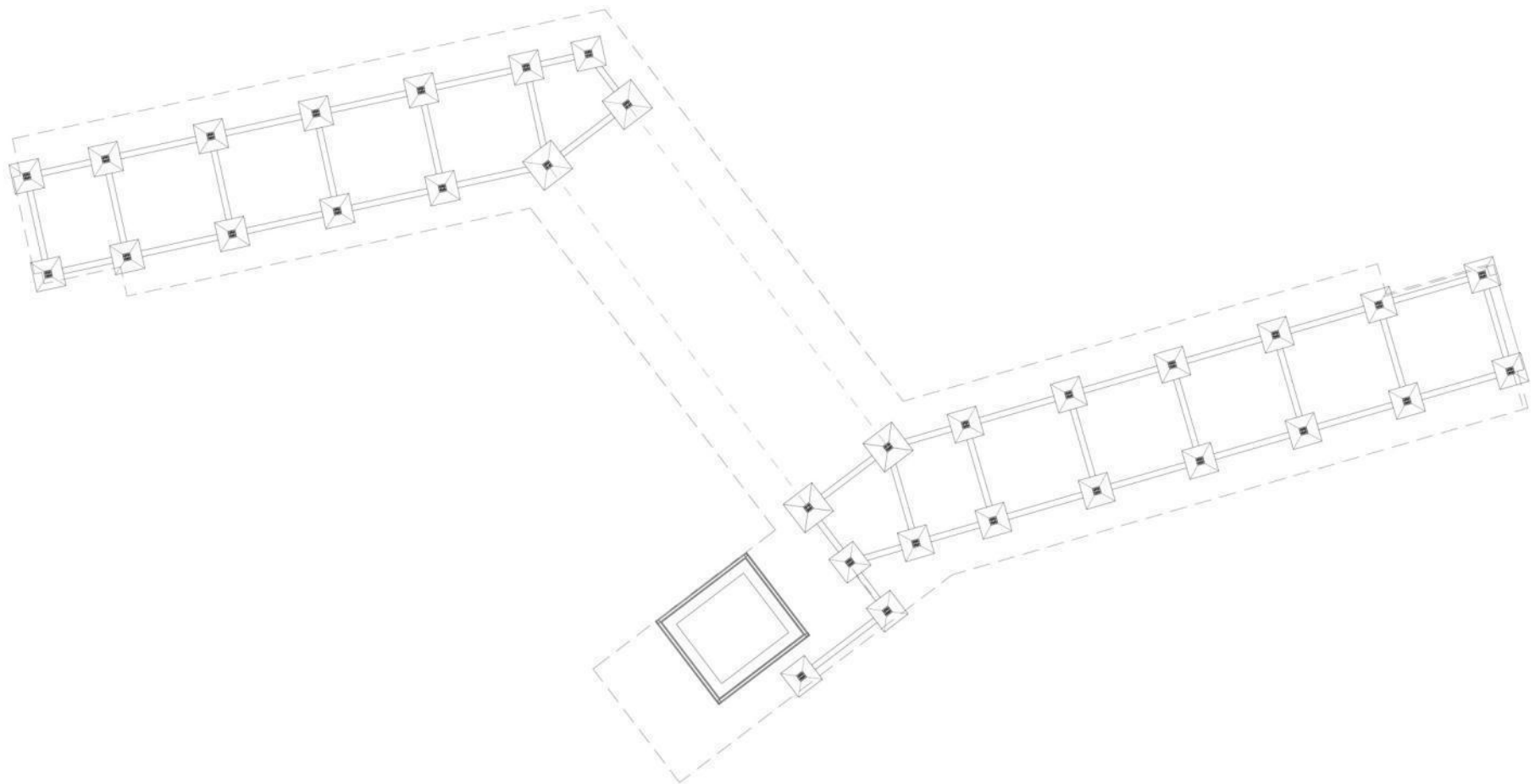
02.APROXIMACIÓ

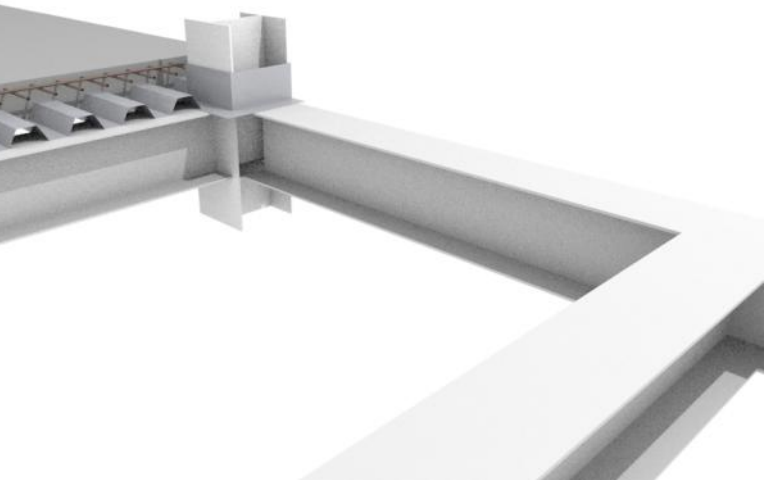
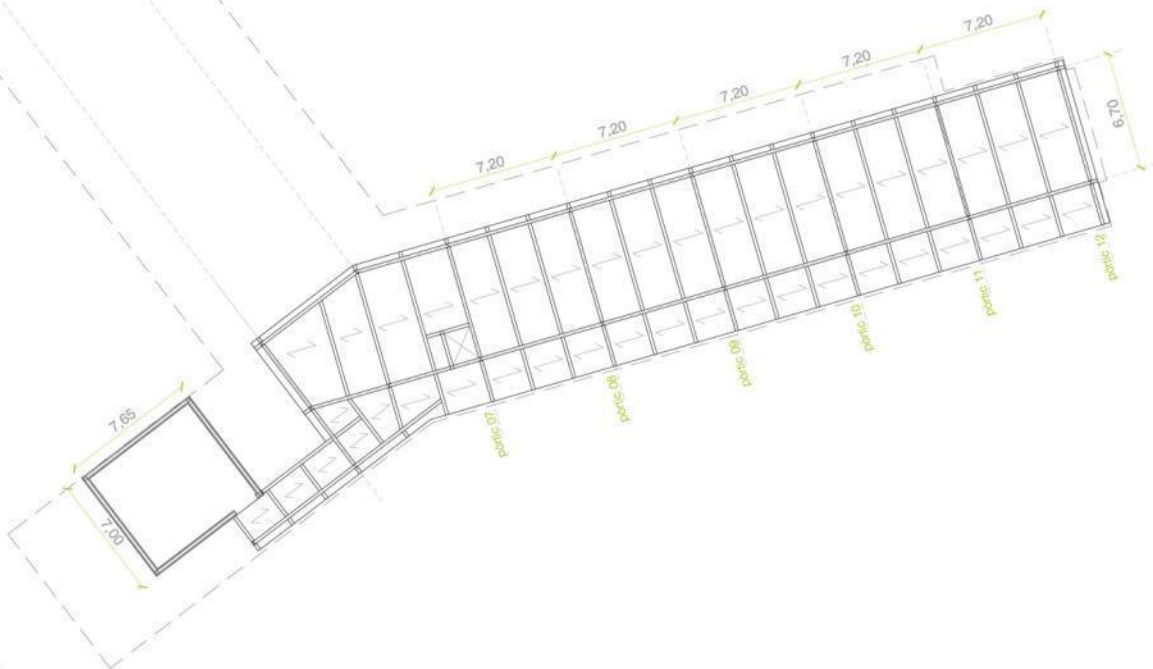
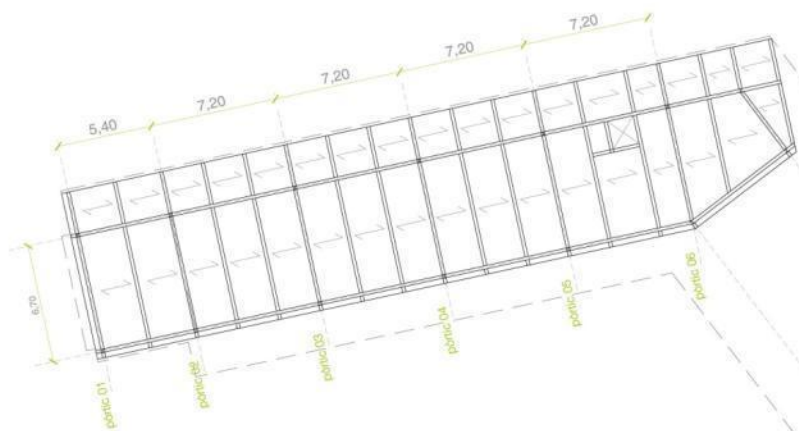
03.CONCEPTE

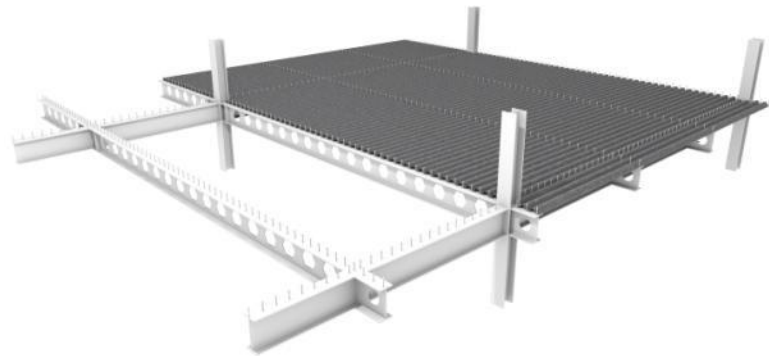
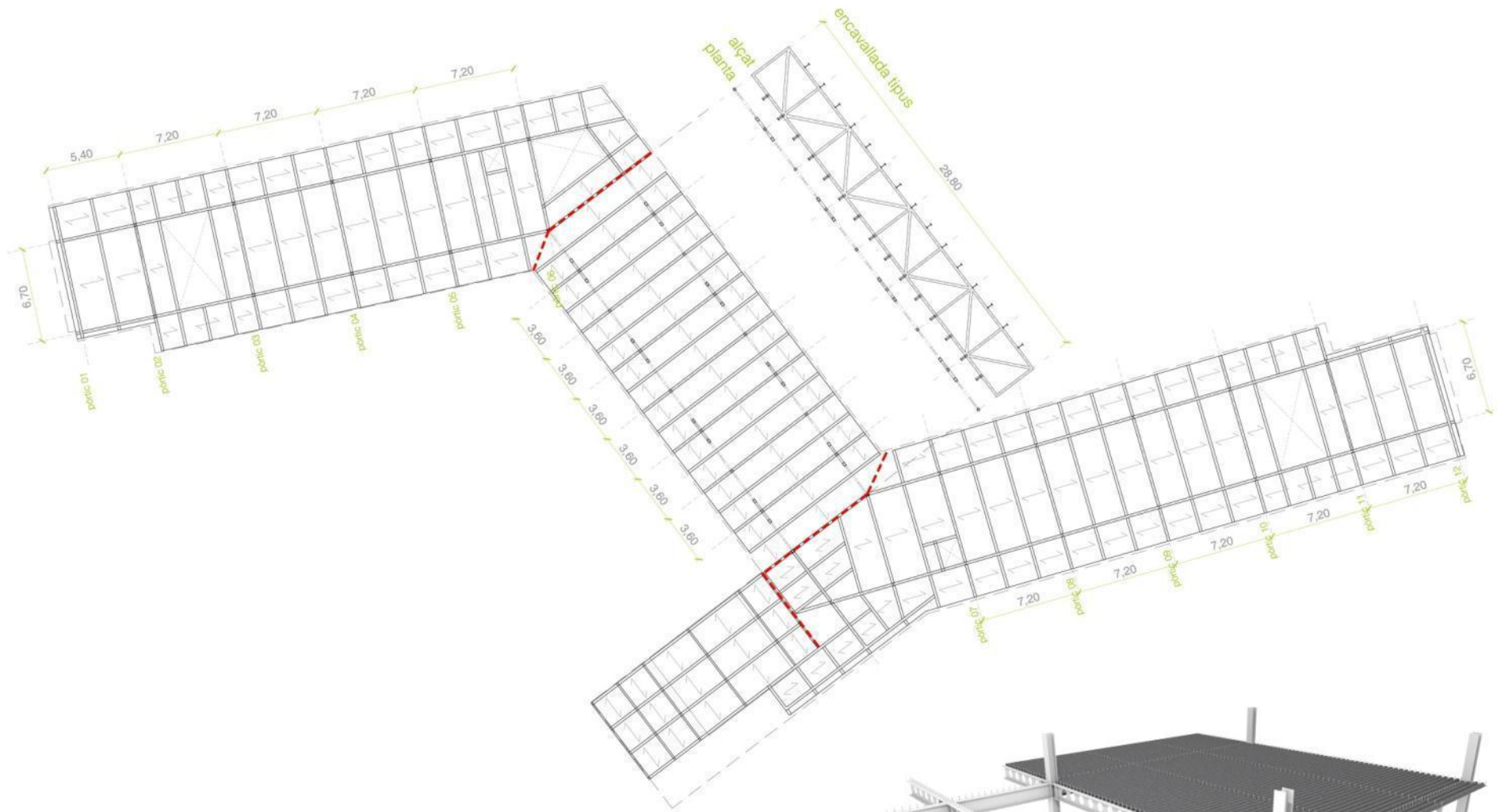
04.PROJECTE

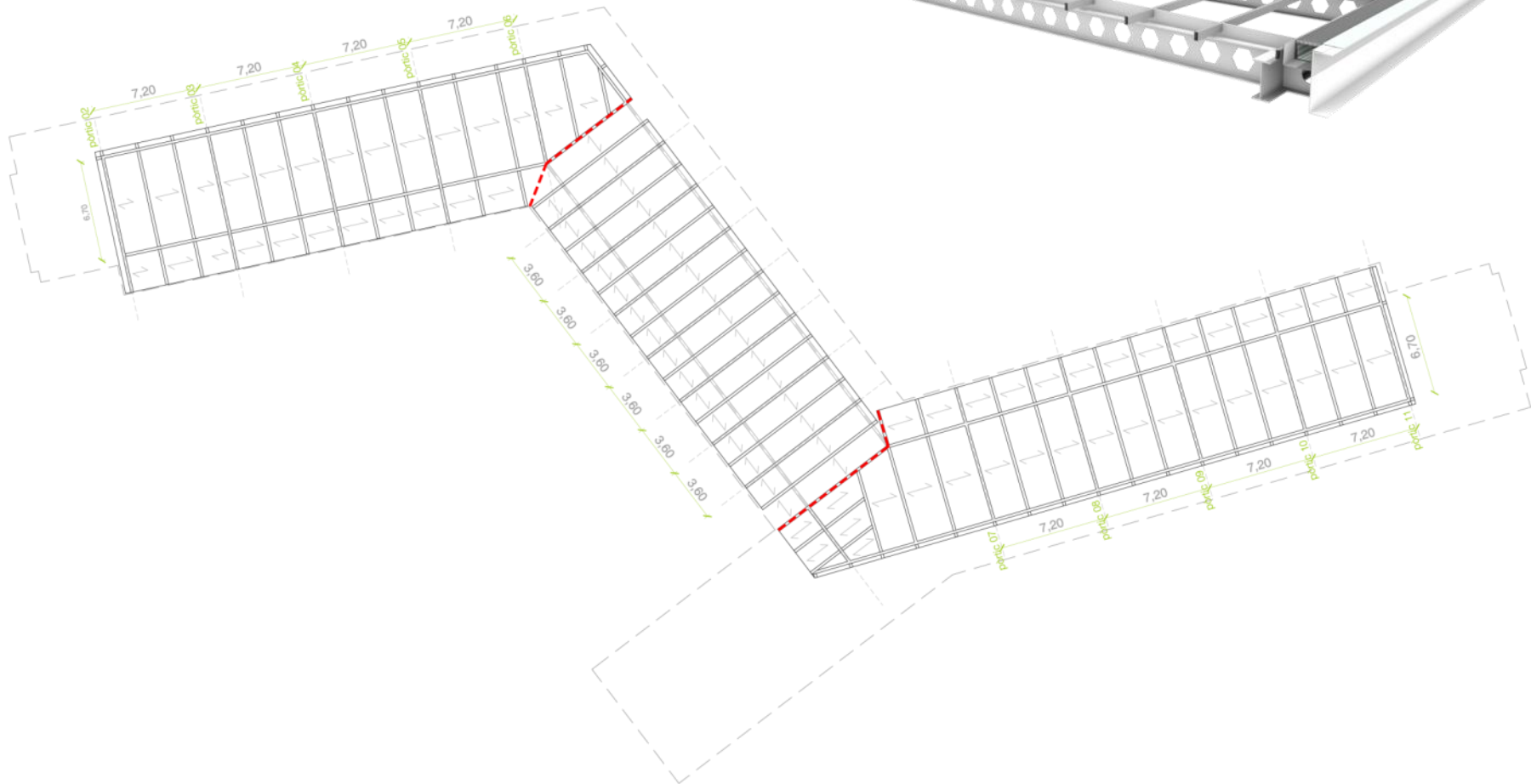
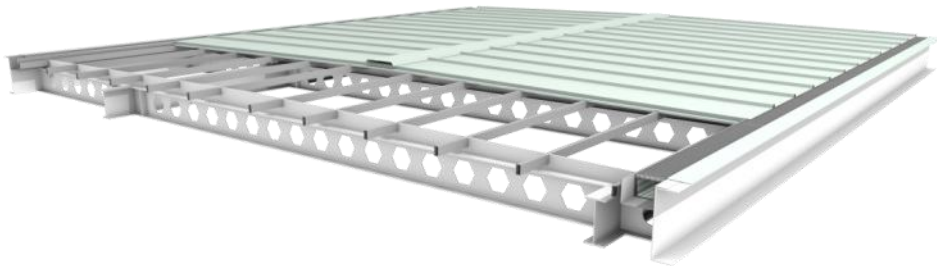
05.SOLUCIONS CONSTRUCTIVES

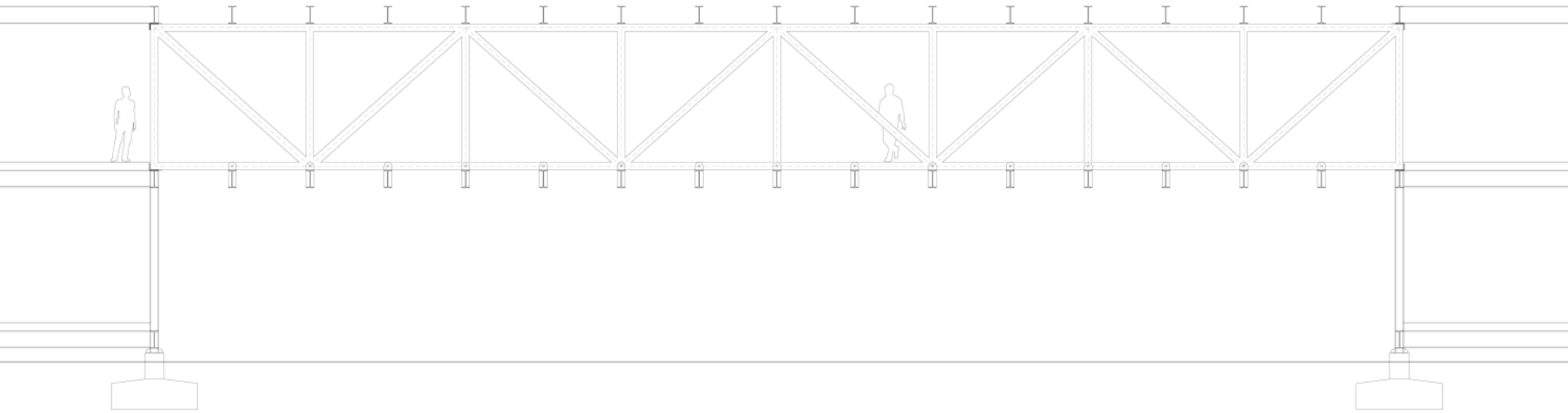
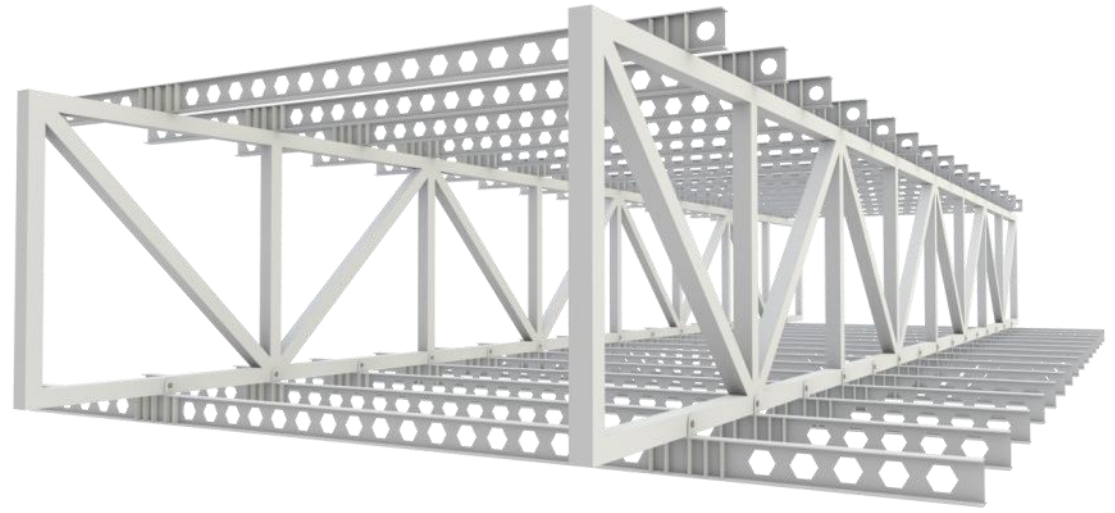
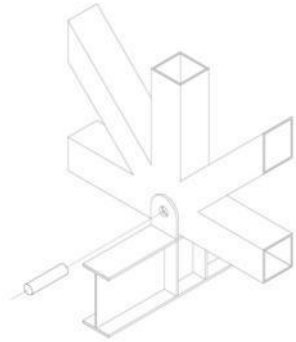
06.STRUCTURA



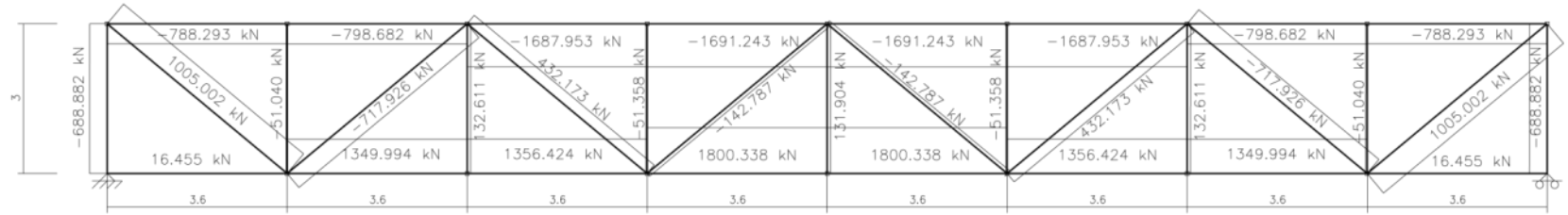




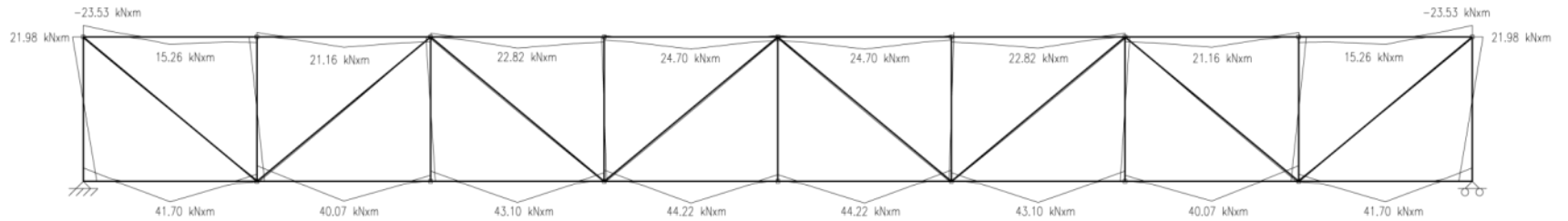




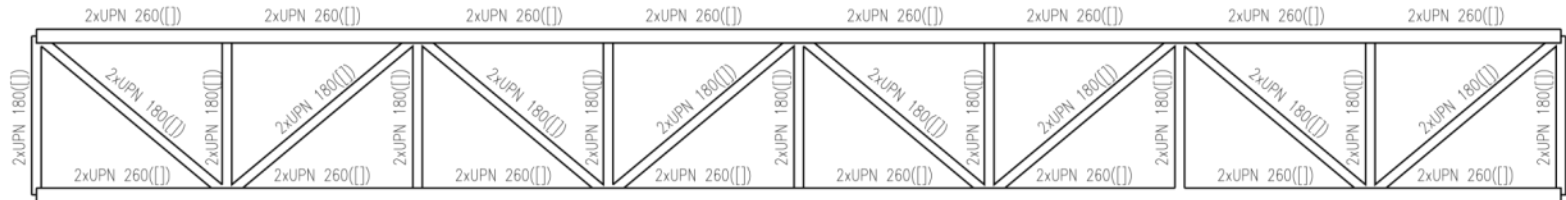
AXILS $N(x)$



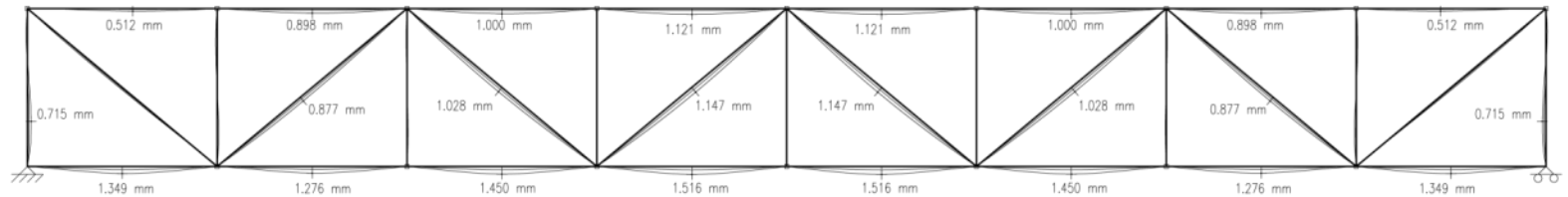
MOMENTS $M(x)$



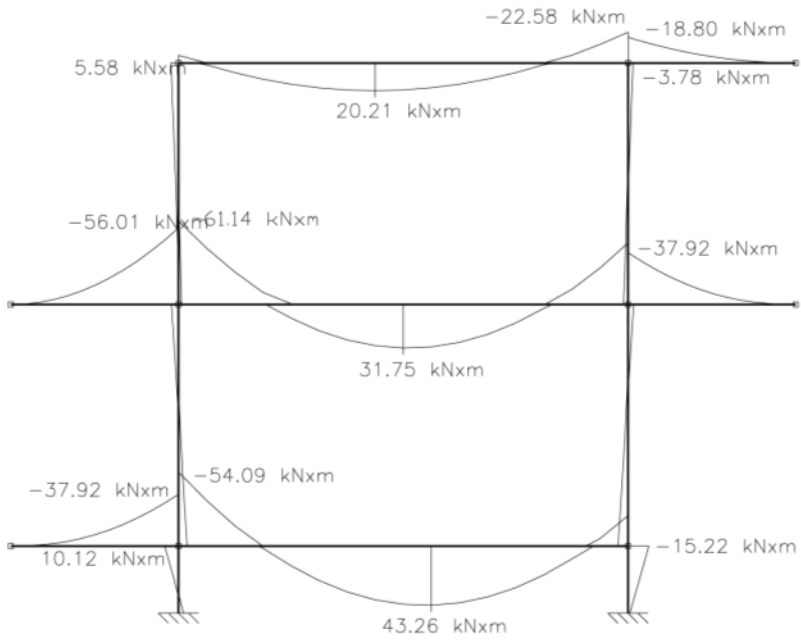
DIMENSIONAMENT



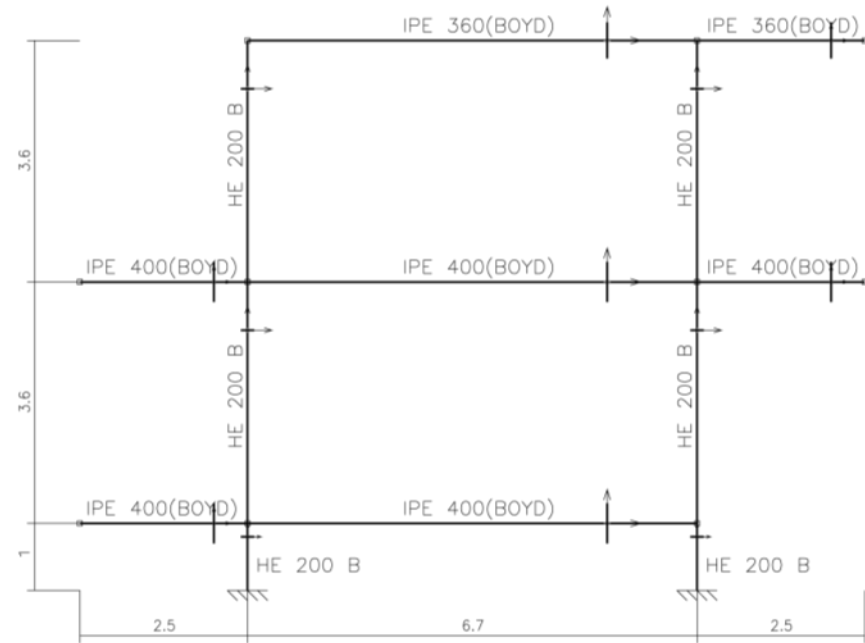
FLETXA $f(x)$



MOMENTS (x)



DIMENSIONAMENT



FI

