

Financial Performance of Spanish hotels during the crisis

Narine Babayan^a, Lourdes Canós Darós^b y Cristina Santandreu Mascarell^b

^a Polytechnic University of Valencia, ^b Escuela Politécnica Superior de Gandia. Universitat Politècnica de València. C/Paranimf, 1. 46730, Grau de Gandia (Valencia).

Abstract

This paper studies the relationship between category, size and chain affiliation of hotels and their financial performance using ANOVA analysis of financial data collected from the SABI database. The target population was Spanish hotels, and the sample used for the study was the hotels of the Alicante region. The results of the study show that in times of the crisis financial figures of hotel companies are generally very low, with the negative average profits in most cases. Category, size and chain affiliation do not completely explain the differences between hotels' financial performance. Only revenue has a significant relationship with all of these three variables. Among other financial indicators, also revenue per room is influenced by category, while gross profits per room and net profits per room are influenced both by category and chain affiliation..

Keywords: Spanish hotels, hotel performance, category, size, chain affiliation, financial crisis.

1. Introduction

1.1 Tourism and hotel industry in Spain

Tourism is one of the most important world economic industries. It accounts for nearly 5 percent of the world Gross Domestic Product and between 6 and 7 per cent of the employment.

In regard to Spain, the tourism and the hotel industry play an especially important role in the economy of the country. The tourism industry accounts for almost 11 per cent of the total Spanish Gross Domestic Product and 12 per cent of the employment (INE, 2011).

Spain is the second largest destination worldwide (behind USA) and the first in Europe for the tourism receipts, while it ranks fourth for the international tourist arrivals (WTO, 2012).

Over the last decades, globalization and the world economic growth contributed to the enlargement of the tourism activity, as each time more and more people have the possibility to go abroad. On the other hand, the new tourist trends towards the alternative tourism (sports, health and beauty, rural tourism) and the new emerging economy destinations decrease the importance of the EU destinations and the sun-and-beach tourism.

The global tourist industry has been continuously increasing and diversifying. According to estimates of the WTO (2012), between 1995 and 2011 the number of international tourist arrivals has almost doubled, increasing from 528 million to 983 million of tourists.

However, the growth of the tourism has not been uninterrupted. The global financial crisis of 2008 influenced also the tourist activity that suffered a decline of 4.2 per cent in the number of tourist arrivals in 2009 (WTO, 2010).

Spanish tourism was also affected by the current financial crisis with the fall of 8.8 percent in the tourist arrivals. This decline affected also other hospitality industries. In particular, hotel industry companies had a fall in their financial results in 2009 (SABI database). From 2010 on this decline has been slowly recovering, but still without reaching results obtained in 2008 (INE, 2010; INE 2012b).

So, the main objective of this paper is to determine if the current financial crisis is affecting all the different types of hotels in the same way, concerning their financial results.

Thereby, we will examine if there is a relationship between category, size and chain affiliation of the Spanish hotels and their financial performance in the times of crisis, carrying out the analysis for the year 2010.

1.2 Hotels of the region of Alicante

The region of Alicante is one of the most important touristic areas of Spain, which provides a wide touristic offer of accommodation, restaurants and other hospitality services. Within the Valencian Autonomous Community, it is the region with the largest hospitality offer that provides accommodation to almost the half of the total number of tourists of the Valencian Community (See figure 1). In 2010 Alicante received 3,266,359 travellers that in overall spent 14,188,489 nights in their hotels.

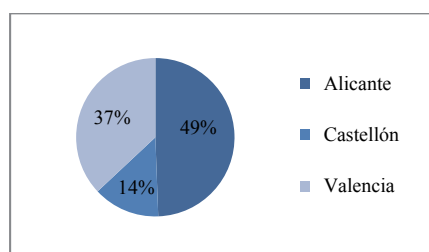


Figure 1. Tourist arrivals by regions of Valencian Community.

In average in 2010 Valencian Community hotel offer consisted of 629 hotels with 124,320 beds, what accounts for 8.2 percent of the total Spanish hotel companies and almost 9.2 percent of the hotel beds offer of Spain (INE, 2011).

Table I. Hotels by category and region 2010.

Region	Gold Stars					Total	%
	1	2	3	4	5		
Alicante	41	64	120	68	10	303	48.17%
Castellón	22	44	28	21	-	115	18.28%
Valencia	27	45	74	60	5	211	33.55%
Valencian Community	90	153	222	149	15	629	100.00%

Source: Compiled by authors based on the data provided by INE, www.ine.es

As reported in the table I, the accommodation offer of the region of Alicante consisted of 303 hotel companies in 2010, what represents almost the half of the total Valencian Community hotel offer (48 percent) and almost 4 percent of the Spanish offer. Most of them are 3-star hotels (almost 40 percent), 1-and 2-star hotel account for almost 35 percent of the total offer and hotels of higher category are less representative, 4-star hotels account for 22.4 percent and only 3.3 percent of them are 5-star hotels (See figure 2).

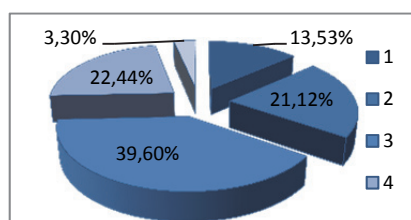


Figure 2. Hotels of Alicante by category.

In our study were included those hotel companies listed in the Official Guide of Spanish Hotels of the year 2010 (the last available edition), which financial accounts were available in the SABI (Sistema de Análisis de Balances Ibéricos, Iberian Balance Sheet Analysis) database.

2. Literature Review

2.1 Performance

Lusthaus et al. (2002) define the organizational performance in terms of “effectiveness (mission accomplishment), efficiency and permanent relevance (to what extent the organization adapts to changing environmental conditions)” (p.10).

According to its legal framework, the enterprise performs well if apart from the financial viability, it operates in the effective and efficient way and it is relevant for the directly interested parties. Therefore, for the evaluation of the performance it is not enough just to use the financial indicators, but also those of effectiveness, efficiency and relevancy have to be assessed. However, the financial performance is mainly measured with figures obtained from annual accounts, those that are common for all the companies and other specific indicators of the industry which the company belongs.

The importance of improvement of financial performance for hotel companies’ long-term survival has been demonstrated by Slovenian researchers (Cvelbar and Dwyer, 2013).

For the measurement of the financial performance of hotels, a wide range of different variables has been employed. The most used among them are: the total gross profit, the gross profit per room and day, and the room or bed occupancy rate (Claver et al., 2007a; 2007b; Molina et al., 2009; Pereira et al., 2011a; Rodríguez and Caro, 2009; Claver et al., 2004; Min et al., 2009).

Other indicators that assess the financial performance of the hotel industry companies are the total revenues and the revenues per room (Chen, 2011; Chung and Kalnins, 2001; Xiao et al., 2012), the ratio between the net operating income and the operating expenses (Chen and Lin, 2012), the ROA (Return on Assets) (Tavitiyaman et al., 2012), the ROE (Return on Equity) and the stock return (Chen, 2011), the net profit (Tavitiyaman et al., 2012) and the net profit margin (Jae and Jang, 2007).

On the other hand, for the measurement of the financial performance during the crisis, Martínez (2010) uses the following variables: the gross and the net operating profits, the total net profit, the ROI and the ROA.

In reference to the factors that explain differences in hotel performance, diverse have been studied. Álvarez et al. (2001) have shown that the environmental management practices affect positively short-term financial performance of hotel companies. On the other hand, the positive influence of human resources initiatives on hotels' performance was demonstrated by Sourouklis and Tsagdis (2013).

Tavitiyaman et al., (2012) also suggested the human resources competitive strategies to influence directly hotel's behavioural performance, and the information technologies affect hotel's financial performance.

Human resources and IT strategies are found to be related with the industry forces, being these strategies stronger in hotels with low customer bargaining power and threat of new entrants, and in contrast, hotels with advantage over its competitors are not competitive in innovation (Tavitiyaman et al., 2010).

Xiao et al. (2012) demonstrated hotel's financial performance also to be related to the owner's strategies regarding segment, brand, operator and location.

On the other hand, hotel's performance is affected by its level of innovation differentiating between four types of innovation: management, external communication, back off and service innovation (Orfila-Sintes and Mattsson, 2009).

Abdul and Basri (2012) have studied the link between customer relationship management (CRM) and the hotel performance, what have also been confirmed by Kim et al. (2013) that proved the positive relationship between customer satisfaction and hotel performance.

Other researchers classify hotels in different performance groups according to factors such as category, age, size, location, chain affiliation, type of management, etc.

Claver et al. (2007a) demonstrated the influence of the size, chain affiliation and category on performance of 3-5-star Spanish hotels, followed by the study that added the variable localization and company's internal factors to explain the competitiveness of Spanish hotels of these categories (Pereira et al., 2011a). According to the results of these studies, hotels with higher category, larger size and those belonging to chains achieve higher performance, with the exception of the occupancy rate that is higher in the case of hotels of lower category. However, among all the factors, resources and capacities of the company are those that most explain its performance.

With the same variables, the level of differentiation and innovation in hotels has also been analysed. According to Becerra et al. (2012), higher category of hotel companies and chain affiliation mean higher

performance, while Jae and Jang (2007) found that differentiation in hotel industry does not provide higher benefits for the companies.

As for the quality of the offered services, food and beverage have a major impact on the hotel revenues than room services (Chen and Chang, 2012).

Among all the different factors that have been suggested to explain the financial performance of hotels, the one that most differentiates between the companies of the sector is the category. On the other hand, the size and the chain affiliation are the variables that have been most employed to explain the hotels' performance. Furthermore, it is worth mentioning that these three variables are not independent, as hotel size can be explained by its category and the fact of belonging or not to a hotel chain.

2.2 Category

Though the category was not much employed to study hotel performance, it is the simplest and most obvious type of hotel classification and the easiest way of differentiation between hotel companies.

Researchers that explained hotels' performance using this variable have shown that hotels of a higher category achieve greater financial performance due to the wider range of services offered, higher quality or more extensive implementation of environmental management (Claver et al., 2007a; Becerra et al., 2012; Álvarez et al., 2001).

According to the Austrian researchers, hotels' category also influences their response behaviour to enquires, being lower rated hotels with the lowest response rate, the longest response time and the poorest information depth (Matzler et al., 2005).

Furthermore, Becerra et al. (2012) directly employ the variable category to assess the hotel's quality.

The CEHAT, Spanish Confederation of Hotels and Tourist Accommodations (La Confederación Española de Hoteles y Alojamientos Turísticos, 2009) establishes the following minimum requirements for each hotel category (See table II).

Table II. Minimum requirements of hotels by category.

Category	Simple room	Double room	Bathroom	Additional services
1-star	7 m2	12 m2	bath or shower 3,5 m2	Central heating and lift
2-star	7 m2	14 m2	bath or shower 3,5 m2	Telephone in room, central heating, lift and safety deposit box service
3-star	8 m2	15 m2	bath and shower 4 m2	Telephone in room, central heating, lift, air conditioning of common areas, lift, bar and safety deposit box service
4-star	9 m2	16 m2	bath and shower 4,5 m2	Telephone in room, central heating, air conditioning in room, lift, bar and safety deposit box in room
5-star	10 m2	17 m2	bath and shower 5 m2	Telephone in room, central heating, air conditioning in room, lift, bar and safety deposit box in room

Source: Compiled by authors based on the data provided by CEHAT, www.cehat.com

2.3 Size

The variable size has been widely employed to classify companies of different industries including hotels.

Claver et al. (2007a), Claver et al. (2007b) and Kim et al. (2013) found out in their studies that hotels of larger size achieve higher levels of performance as the greater firm size generally means higher possibilities to incur in economies of scale or economies of scope.

In the hotel industry, the size has been demonstrated to explain factors such as the level of innovation (Orfila-Sintes and Mattson, 2009), the quality and the environmental management practices (Molina et al., 2009; Álvarez et al., 2001; Kirk, 1998), as well as the type of growth strategy implemented in the company (Claver et al., 2006).

The company's size is generally determined by the number of people employed. However, in the hotel industry size is mainly assessed with the number of beds or guest-rooms offered.

In this paper the hotels were classified in different size groups according to the number of guest-rooms:

- Small: less than 100 rooms
- Medium-sized: between 100 and 200 rooms
- Large: more than 200 rooms

This classification is an approximation to the one applied by Clavier et al. (2007a) in his study, but it is based on the number of rooms instead of the categorization by the number of beds.

2.4 Chain affiliation

Chain affiliation that differentiates between independent hotels (only one hotel) and those belonging to chains (2 or more hotels) is the most studied variable for the hotel performance analysis.

Being part of the hotel chain not only presents advantages, but also disadvantages (Villacorta, 2002a). The main differences between these two types of hotels is that hotels in chains share the single brand and in average have a larger size than the independent hotels, aspects that may influence both positively and negatively the hotel operations and its performance.

The unique brand image provides an easier communication with the client and lower costs of information search, but at the same time this can damage all the hotels that form part of the chain if the image is negative.

Larger size can also have positive and negative effects. On one hand, as a result of synergies, economies of scale and scope, it means a decrease in costs, higher bargaining power, more possibilities of funding and investment. On the other hand, a larger company size could be associated with lower quality as it is more difficult to run and control and normally it offers more standardized products and services at lower prices.

However, most studies that analysed this variable found that the advantages of being part of a chain are more important than its disadvantages.

According to Claver et al. (2007 a; 2007b) and Tavitiyaman et al. (2012), hotels in chains achieve higher levels of performance, both operational and financial.

Villacorta (2001) has shown that hotels belonging to chains have higher possibilities to survive and furthermore, as the chain size increases as a consequence of the increment in number of rooms or number of hotels, the possibilities to fail decrease (Villacorta, 2002b).

The same way as some studies assess the hotel quality with its category (Becerra et al., 2012), there are also authors that suggest the relationship between chain affiliation and quality, stating that the mere fact

of belonging to chain provides a hotel greater prestige and better reputation (Ingram and Baum, 1997; Holversen and Revaz, 2006).

Moreover, Gil and Meroño (2006) have shown that hotels in chain make greater use of the new technologies what improves their performance.

Chung and Kalnins (2001) also demonstrated the benefits of the hotels' chains over the independent hotels in the creation of positive externalities.

According to all these studies, hotels belonging to chains achieve a higher performance, both financial and operational, and have better survival. Therefore, it would be interesting to determine if this also happens in times of crisis. Do the hotels in chain also face lower losses than the independent ones during the crisis?

3. Methodology

3.1 Population and sample

Our study is mainly based on data derived from secondary sources of information that, despite the disadvantages of its possible inaccuracy, also present advantages mostly because of its major objectiveness. General information about the industry was collected using the reports and studies carried out by the INE (Instituto Nacional de Estadística, National Institute of Statistics), the WTO (World Tourism Organization), the IET (Instituto de Estudios Turísticos, Institute of Tourism Studies), ExcelTur, CEHAT (Confederación Española de Hoteles y Alojamientos Turísticos, Spanish Confederation of Hotels and Tourist Accommodations), as well as news published on the web page of a digital newspaper specialized in tourism – HostelTur. On the other hand, in order to obtain the basic information about the hotels and to classify them, data from the Official Hotels' Guide (La Guía Oficial de Hoteles) published annually by Turespaña has been contrasted and completed with the information provided on the web pages of hotel enterprises. Furthermore, to carry out the analysis, financial data for the year 2010 was compiled from the SABI database (Sistema de Análisis de Balances Ibéricos, Iberian Balance Sheet Analysis Database).

The targeted population is all the Spanish hotels excluding the National Paradors (Paradores Nacionales), because they present specific features as a consequence of being state-run, with the total number of 7.492 hotels in 2010.

Our sample consists of all the hotels of the region of Alicante listed in the Official Guide of Hotels of 2010, which annual accounts are available in the SABI Database.

According to the Official Hotels' Guide, in 2010 the total offer of hotels in the region of Alicante consisted of 303 establishments, most of which were three-star hotels (See table III).

Table III. Hotels of Alicante by category.

Category	N° hotels	Percentage
1-star	41	13.53%
2-star	64	21.12%
3-star	120	39.60%
4-star	68	22.44%
5-star	10	3.30%
Total	303	100.00%

Source: Compiled by authors based on the data provided by the Official Hotels' Guide 2010, Turespaña

After analysing all the data available, from the total of 303 hotels, the SABI Database provides complete financial reports for 132 of them, hotels which constitute our final sample.

3.2 Variables

Our dependent variable is the hotels' financial performance, which was measured using both, the industry financial performance indicators and the variables which assess the company's performance during the crisis.

Therefore, this study used all the following variables for the assessment of the financial performance:

- Revenue – total income obtained from the sales of products or services' provision.
- Net operating profit (EBIT) – profit without taking into account interests and income taxes.
- Gross and net profit – profit before taxes and the final company's income or loss.
- Revenue per room, gross and net profit per room – ratios that eliminate the effect of the size.
- Return on investment and return on equity - ratios that measure the company's profitability on the investment of assets or shareholders' equity.

These variables were analysed taking into account three different factors: the category, size and chain affiliation that constitute the independent variables of our empirical study.

We include hotels of all the different categories obtaining a sample with the following composition (table IV):

Table IV. Hotels of the sample classified by category.

Category	Nº hotels	Percentage
1-star	8	6.06%
2-star	30	22.73%
3-star	54	40.91%
4-star	34	25.76%
5-star	6	4.55%
Total	132	100.00%

Source: Compiled by authors

As we can observe, most of the hotels of the sample are of the category 3-star, followed by 4- and 2-star hotels, while there are very few 1- and 5-star hotels. The composition of the sample is similar to that of the region of the study (table II), with the exception of 1-star and 5-star hotels, as the first ones account for less proportion and the second ones, on the contrary, have a greater presence in our sample.

The variable size distinguishes between small, medium-sized and large hotel enterprises by the overall number of guest-rooms offered by the hotel. As the accommodation industry of the region is predominated by the small hotel enterprises, the proportion of larger size hotels in our sample is also quite low. So, the study is carried out on 79 small, 28 medium-sized and 25 large hotels.

And finally, our third independent variable, chain affiliation, separates the hotel companies in 2 groups: independent hotels (97) and hotels belonging to chains (35).

3.3 Data Analysis

The data obtained from the SABI Database were tested conducting the ANOVA analysis (Miguel et al., 1996). In overall, three different analyses were carried out to study separately the influence of each variable: category, size and chain affiliation.

The ANOVA analysis was conducted applying the SPSS statistic software, where our independent variables were defined as followed:

- Category: a nominal variable that takes values between 1 and 5 according to the category.
- Size: a nominal variable with values between 1 and 3, corresponding 1 to small hotels, 2 - medium-sized and 3-large hotels.
- Chain Affiliation: a nominal variable which refers to independent hotels when takes value 0 and hotels in chain with the value 1.

On one hand, a descriptive analysis was performed calculating the mean, the standard deviation and the standard error of the variables that measure the hotel performance in our study: the total revenue, the revenue per room, the net operating profit, the total gross and net profit, and the gross and net profit per room, the net profit margin, the economic and financial profitability.

On the other hand, the analysis of variances was conducted to test the equality of means of the financial variables according to each independent variable.

4. Results

Category

The descriptive statistics for the variable Category show the highest level of revenue for 4-star hotels, followed by 5-star and 3-star hotels, while the average revenue of hotels of the categories 1- and 2-star is the lowest. In contrast, when analysing the same variable eliminating the effect of the size, the 1-star hotels obtain better results than the 2- and the 3-star hotels. Moreover, the one-star hotels are the only ones with the positive net profit, the rest of them in average obtain negative profits that decrease as the category increases.

As for the operating and gross profits, these are the highest in 4-star hotels, followed by 1-star hotels and negative in 2- and 5-star hotels. It is worth to highlight the losses faced by 5-star hotels that are estimated to be extremely high.

In reference to the profits per room, both the gross and the net profit per room have the highest average in 1-star hotels followed by hotels of the category 4-star, while other categories show negative figures, excepting the gross profit in 3-star hotels.

And finally, ROA ratio shows positive values only for the 1- and the 3-star hotels, being hotels of the categories 2- and 5-star with the lowest assets efficiency, whereas the ROE is quite high for the hotels of the highest category and only presents a negative value for the 2-star hotels.

Table V. Descriptive statistics.

	CATEGORY		SIZE		CHAIN AFFILIATION				
	N	Mean	N	Mean	N	Mean			
Revenue	1-star	8	399284.25	small	79	787680.72	independent	97	1368762.22
	2-star	30	528545.3	medium	28	2229653.6	chain affiliat-	35	3247605.34
	3-star	54	1702068.2	large	25	4871161.76	Total	132	1866940.32
	4-star	34	3467039.51	Total	132	1866940.32			
	5-star	6	2932410.42						
	Total	132	1866940.32						
Operating Profit	1-star	8	22644.88	small	79	35910.41	independent	97	15645.01
	2-star	30	3612.83	medium	28	12141.79	chain affiliat-	35	4227.3
	3-star	54	-2125.79	large	25	-60454.83	Total	132	12617.59
	4-star	34	155161.16	Total	132	12617.59			
	5-star	6	-630784.83						
	Total	132	12617.59						
Gross profit	1-star	8	21956.77	small	79	-2930.09	independent	97	23228.13
	2-star	30	-3601.57	medium	28	-45862.33	chain affiliat-	35	-152247.89
	3-star	54	6509.95	large	25	-62396.99	Total	132	-23299.6
	4-star	34	40212.77	Total	132	-23299.60			
	5-star	6	-810320.98						
	Total	132	-23299.6						
Net profit	1-star	8	12913.38	small	79	-13024.75	independent	97	-12802.26
	2-star	30	-9928.3	medium	28	-89403.11	chain affiliat-	35	-193866.73
	3-star	54	-29563.58	large	25	-179796.50	Total	132	-60811.78
	4-star	34	-40033.03	Total	132	-60811.78			
	5-star	6	-812509.33						
	Total	132	-60811.78						
Return on assets	1-star	8	3.16	small	79	-57.07	independent	97	-45.54
	2-star	30	-151.05	medium	28	0.08	chain affiliat-	35	-1.05
	3-star	54	2.91	large	25	2.11	Total	132	-33.74
	4-star	34	-2.2	Total	132	-33.74			
	5-star	6	-5						
	Total	132	-33.74						
Return on equity	1-star	8	2.61	small	79	-28.98	independent	97	-21.16
	2-star	30	-82.66	medium	28	-8.58	chain affiliat-	35	-1.62
	3-star	54	2.01	large	25	16.81	Total	132	-15.98
	4-star	34	0.61	Total	132	-15.98			
	5-star	6	36.79						
	Total	132	-15.98						
Revenue per room	1-star	8	17544.84	small	79	16541.66	independent	97	15765.96
	2-star	30	9297.96	medium	28	15458.66	chain affiliat-	35	18084.57
	3-star	54	16051.06	large	25	16904.97	Total	132	16380.74
	4-star	34	21066.91	Total	132	16380.74			
	5-star	6	26654.63						
	Total	132	16380.74						
Gross profit per room	1-star	8	751.5	small	79	-1.95	independent	97	293.65
	2-star	30	-457.7	medium	28	-145.23	chain affiliat-	35	-798.39
	3-star	54	233.86	large	25	190.44	Total	132	4.09
	4-star	34	709.83	Total	132	4.09			
	5-star	6	-4750.59						
	Total	132	4.09						
Net profit per room	1-star	8	415.02	small	79	-219.87	independent	97	-14.11
	2-star	30	-543.06	medium	28	-437.33	chain affiliat-	35	-988.4
	3-star	54	-8.89	large	25	-253.88	Total	132	-272.44
	4-star	34	187.29	Total	132	-272.44			
	5-star	6	-4813.12						
	Total	132	-272.44						

Source: Compiled by authors based on the results of the SPSS analysis.

As for the statistical significance of these relationships, results are shown in the table V. The category affects significantly the revenue, the revenue per room, the gross profit per room and the net profit per room (Sig. < 0.05). This influence is quite strong on the revenue (F = 11.67) and not that considerable on other variables.

Table VI. ANOVA analysis.

	CATEGORY		SIZE		CHAIN AFFILIATION	
	Sig.	F-value	Sig.	F-value	Sig.	F-value
Revenue	0.000	11.666	0.000	64.869	0.000	22.350
Operating profit	0.215	1.472	0.854	0.599	0.938	0.006
Gross profit	0.071	2.215	0.913	0.462	0.191	1.731
Net profit	0.061	2.313	0.504	1.478	0.148	2.114
Return on assets	0.499	0.846	0.715	1.032	0.571	0.322
Return on equity	0.635	0.640	0.743	1.533	0.708	0.141
Revenue per room	0.000	6.247	0.887	0.042	0.313	1.027
Gross profit per room	0.002	4.359	0.932	0.097	0.038	3.960
Net profit per room	0.001	4.810	0.942	0.345	0.035	4.039

Source: Compiled by authors based on the results of the SPSS analysis.

Size

The descriptive analysis of the financial indicators according to the company's size reports that the hotels of the sample are mostly small (79), and the proportion of medium-sized and large hotels is similar (28 vs. 25). It is demonstrated that size affects positively the total revenue of the hotel companies and at the same time means lower profits, as the average operating, gross and net profit decrease as the hotels' size increases. Large hotels obtain much more losses than the small ones. While the operating profit is only negative in hotels of more than 200 rooms, total gross and net results in average mean losses for all the size categories.

As for the indicators per room, the revenue, the gross profits and the net profits per room are the lowest for the medium size hotels.

On the other hand, hotels of larger dimensions achieve higher profitability from the assets' investment and stakeholders' equity, whereas hotels with less than 100 rooms don't seem to manage their assets and liabilities in a profitable way.

Among all the analysed variables only the revenue was found to be significantly influenced by the size. Other variables have no statistically significant relationship to the studied variable.

Chain affiliation

Comparing independent hotels with hotels belonging to chains, there are much more independent (98) than chain affiliated hotels (35) in our sample. Results of the descriptive analysis show that in average hotels in chain obtain higher revenues, but lower profits than the independent ones. The average income of hotels in chain more than doubles the income of independent hotels, but their average operating profit is lower.

Hotels in chain obtain negative gross and net profits, while the results before taxes of the independent hotels are still positive and the final losses they obtain are not so high.

Neither hotels belonging to chains, nor the independent hotels obtain profitability from their assets and shareholder's equity, showing independent hotels more negative results of the ROA and the ROE.

According to the results of the analysis of variances, chain affiliation only has a significant influence on the variables revenue, gross and net profits per room, but has no statistically significant relationship with other financial figures.

5. Conclusions

This paper studied the relationship between category, size and chain affiliation of hotel companies and their financial performance.

The results of the study support the findings of researchers that demonstrated the existence of the relationship between the hotels' financial performance and their category, size and chain affiliation. Though our empirical study gives an evidence of the influence of these variables on the financial performance of hotel companies, not all the financial indicators are being found to be significantly affected by them.

Category influences the hotels' total revenue and the revenue per room, as well as the gross and net profits per room. The relationship between category and revenue is found to be positive with some exceptions. Higher category means higher total revenue with the exception of the 5-star hotels that obtain lower revenues than those of the category 4-star. As for the revenue per room, it also increases with the category, excepting 1-star hotels, which average revenue is higher than in 2- and 3-star hotels.

In reference to profits, these are the highest in 4- and 1-star hotels and the lowest in 5- and 2-star hotels. Better survival of 1-star hotels can be explained by their higher occupancy rate in times of the crisis, while the extremely high losses of the 5-star hotels may be due to very high maintenance costs in the hotels of this category.

The variable size is found to have a statistically significant effect only on the revenue, larger hotels' size meaning higher revenue. These results confirm the findings of other studies that demonstrated higher performance levels and better survival of larger size hotels.

And as for the chain affiliation, it influences positively the revenue and negatively the gross and net profits per room of hotel companies. Hotels belonging to chains obtain much greater revenue than the independent hotels. However, their profits are extremely low compared to the hotels not belonging to chains, what is contrary to the findings of the reviewed studies.

According to the results, hotels of higher category, larger size and those belonging to chains still obtain higher earnings. However, their expenses seem to be extremely high, so they don't manage to cover them, and therefore, losses are unavoidable. This result can be explained by the high fixed expenses of these hotels that combined with a fall in the number of guests as a consequence of the crisis, lead the company to the negative results.

On the other hand, the average financial figures are found to be quite low for almost all the different groups of hotels. In times of crisis hotel companies do not seem to be able to cover their costs, among which are especially important the financial costs as the average gross profits turn negative, while the operating profits mostly have positive values. Hotels of all the different sizes and the hotels belonging to chains obtain losses as a consequence of their financial results.

6. References

- Abdul, M.; Basri, R. (2012). Customer Relationship Management (CRM) in Hotel Industry: A framework Proposal on the Relationship among CRM Dimensions, Marketing Capabilities and Hotel Performance. *International Review of Management and Marketing*, Vol. 2 No. 4, pp. 220-230.
- Álvarez, M. J.; Burgos, J.; Céspedes, J. J. (2001). An analysis of environmental management, organizational context and performance of Spanish hotels. *The International Journal of Management Science*, Vol. 29 No. 6, pp. 457-471.
- Becerra, M.; Santaló, J.; Silva, R. (2012). Being better vs. being different: Differentiation, competition, and pricing strategies in the Spanish hotel industry. *Tourism Mangement*, Vol. 34, pp. 71-79.
- Chen, C.; Lin, Y. (2012). Does better service induce higher profitability? Evidence from Taiwanese Hospitality Industry. *International Journal of Hospitality Management*, Vol. 31 No. 4, pp. 1330-1332.
- Chen, C.; Chang, K. (2012). Diversification strategy and financial performance in the Taiwanese hotel industry. *International Journal of Hospitality Management*, Vol. 31 No. 3, pp. 1030 – 1032.
- Chen, M. (2011). The response of hotel performance to international tourism development and crisis events. *International Journal of Hospitality Management*, Vol. 30 No. 1, 200-212.
- Chung, W.; Kalnins, A. (2001). Agglomeration Effects and Performance: A Test of the Texas Lodging Industry. *Strategic Management Journal*, Vol. 22 No. 10, pp. 969 -988.
- Claver, E.; Pereira, J.; de Juana, S.; Andreu, R. (2004). Consecuencias de la Presencia de las Nuevas Tecnologías de la Información y la Comunicación en la Rentabilidad, Calidad y Recursos Humanos de los Hoteles de la Provincia de Alicante. *Tourism and information and communication technologies 2004 proceedings of the 5th national conference in Malaga, Spain, 2004*, University School of Tourism, Spain, pp. 53-70.
- Claver, E.; Andreu, R.; Quer, D. (2006). Growth strategies in the Spanish hotel sector: determining factors. *International Journal of Contemporary Hospitality Management*, Vol. 18 No. 3, pp. 188 – 205.
- Claver, E.; Pereira, J.; Molina, J. (2007a). Impacto del Tamaño, el Tipo de Gestión y la Categoría sobre el Desempeño de los Hoteles Españoles. *Cuadernos de Turismo*, Vol. 19, pp. 27-45.

- Claver, E.; Molina, J.; Pereira, J. (2007b). The impact of strategic behaviours on hotel performance. *International Journal of Contemporary Hospitality Management*, Vol. 19 No.1, pp. 6 – 20.
- Cvelbar, L.; Dwyer, L. (2013). An importance—performance analysis of sustainability factors for long-term strategy planning in Slovenian hotels. *Journal of sustainable tourism*, Vol. 21 No. 3, pp. 487-504.
- Confederación Española de Hoteles y Alojamientos Turísticos (2009). Hotel Classification System in Spain”, available at <http://www.cehat.com/frontend/cehat/Hotel-Classification-System-In-Spain-vn2682-vst328> (accessed 3 February 2013).
- Exceltur (2012). IMPACTUR Studies, available at <http://www.exceltur.org/excel01/contenido/portal/listawrap.aspx?nid=190>. (accesed 11 December 2012).
- Gil, N.; Meroño, A. L. (2006). Efectos del empleo de las tecnologías de la información en hotels. *Tourism and information and communication technologies 2006 proceedings of the 6th national conference in Malaga, Spain, 2006*, University of Malaga, pp. 275-288.
- Holverson, S.; Revaz, F. (2006). Perceptions of European independent hoteliers: hard and soft branding choices. *International Journal of Contemporary Hospitality Management*, Vol. 18, pp. 398-413.
- Ingram, P; Baum, J. (1997). Chain affiliation and the failure of Manhattan hotels, 1898-1980. *Administrative science quarterly*, Vol. 42 No. 1, pp. 68-102.
- Instituto de Estudios Turísticos (2012a). Balance del Turismo en España. Año 2011. Available at <http://www.iet.tourspain.es/esES/estadisticas/analisisturistico/balantur/anales/Balance%20del%20turismo%20en%20Espa%C3%B1a%20A%C3%B1o%202011.pdf> (accessed 20 November 2012).
- Instituto de Estudios Turísticos (2012b). Informe del Empleo Turístico. Año 2011. Available at <http://www.iet.tourspain.es/esES/estadisticas/otrasestadisticas/empleoturistico/encuestapoblacion/Informes/Informe%20anual%20de%20la%20EPA%20en%20el%20sector%20tur%C3%ADstico%20A%C3%B1o%202011.pdf> (accessed 23 November 2012).
- Instituto Nacional de Estadística (2010). Coyuntura Turística Hotelera (EOH/IPH/IIH) Año 2009. Available at <http://www.ine.es/daco/daco42/prechote/cth1209.pdf> (accessed 20 November 2012).
- Instituto Nacional de Estadística (2012a). Contabilidad Nacional 2011. Available at <http://www.ine.es/jaxi/menu.do?type=pcaxis&path=/t35/p008/&file=inebase> (accessed 23 November 2012).
- Instituto Nacional de Estadística. (2012b). Encuesta de Ocupación Hotelera 2012. Available at http://www.ine.es/daco/daco42/ocuphotel/notaeoh_12.pdf (accessed 20 November 2012).
- Jae, M.; Jang, S. (2007). Market diversification and financial performance and stability: A study of hotel companies. *Hospitality Management*, Vol. 26 No. 2, pp. 362–375.
- Kim, W.; Cho, M.; Brymer R. (2013). Determinants affecting comprehensive property-level hotel performance: The moderating role of hotel type. *International Journal of Hospitality Management*, Vol. 34, pp. 404– 412

- Kirk, D. (1998). Attitudes to environmental management held by a group of hotel managers in Edinburgh. *Hospitality Management*, Vol. 17 No.1, pp. 33-47.
- Lusthaus, C.; Adrien, M.; Anderson, G.; Carden, F.; Plinio, G. (2002). *Organizational Assessment: a framework for improving performance*. Inter-American Development Bank and International Development Research Centre, Washington D.C.
- Martínez, C. (2010). La evolución de los beneficios y la rentabilidad empresarial durante la crisis económica. *Boletín económico - Banco de España*, Madrid.
- Martorell, O. (2002). *Cadenas hoteleras: análisis del top 10*. Ariel, Barcelona.
- Matzler, K.; Pechlaner, H.; Abfalter, D.; Wolf, M. (2005). Determinants of response to customer e-mail enquiries to hotels: evidence from Austria. *Tourism Management*, Vol. 25 No. 2, pp. 249-259.
- Miquel, S.; Bigné, E. ; Lévy, J.P.; Cuenca, A.C.; Miquel, M.J. (1996), *Investigación de mercados*. McGraw Hill, Madrid.
- Min, H.; Min, H.; Jong S.; Kim, J. (2009). Evaluating the financial performances of Korean luxury hotels using data envelopment analysis. *The Service Industries Journal*, Vol. 29 No. 6, pp. 835-845.
- Molina, J.; Claver, E.; Pereira, J.; Tarí, J. (2009). Gestión de la calidad y medioambiental y rendimiento empresarial. Un análisis de los hoteles españoles. *Revista europea de dirección y economía de la empresa*, Vol. 18 No. 2, pp. 63-78.
- Orfila-Sintes, F.; Mattsson, J. (2009). Innovation behavior in the hotel industry. *The International Journal of Science Management*, Vol. 37 No.2, pp. 380-394.
- Organización Mundial de Turismo (2012). *Panorama OMT del turismo internacional*. Edición 2012. available at <http://mkt.unwto.org/es/publication/panorama-omt-del-turismo-internacional-edicion-2013> (accessed 12 December 2012)
- Pereira, J.; Claver, E.; Molina, J. (2011a). Efectos empresa, grupo estratégico y localización en el sector hotelero español. *Cuadernos de Economía y Dirección de la Empresa*, Vol. 14 No.2, pp. 123-138.
- Pereira, J.; Claver, E.; Molina, J. (2011b). Explaining the Strategic Groups-Firm Performance Relationship: A Multilevel Approach Applied to Small and Medium-Sized Hotel Companies in Spain. *Journal of Small Business Management*, Vol. 49 No. 3, pp. 411-437.
- Secretaría de Estado de Comercio y Turismo (2011). *Guía Oficial de Hoteles. España 2010*, Turespaña, Madrid.
- Sistema de Análisis de Balances Ibéricos (2012). Bureau van Dijk: Informa. Available at www.sabi.bvdep.com (accessed January-March 2013).
- Sourouklis C.; Tsagdis D. (2013). Workforce diversity and hotel performance: A systematic review and synthesis of the international empirical evidence. *International Journal of Hospitality Management*, Vol. 34, pp. 394-403.
- Tavitiyaman, P.; Qu, H.; Zhang, H. Q. (2010). The impact of industry force factors on resource competitive strategies and hotel performance. *International Journal of Hospitality Management*, Vol. 30 No.3, pp. 648-657.

- Tavitiyaman, P.; Qiu, H.; Qu, H. (2012). The effect of competitive strategies and organizational structure on hotel performance. *International Journal of Contemporary Hospitality Management*, Vol. 24 No. 1, pp. 140-159.
- Villacorta Rodríguez, D. (2001). Importancia de los factores internos en el fracaso del hotel español: una aplicación de la teoría ecológica. Paper presented at the ASEDE XI National Conference, Zaragoza, available at <http://fama2.us.es:8080/turismo/turismonet1/economia%20del%20turismo/hosteleria/importancia%20de%20los%20factores%20internos%20sobre%20el%20fracaso%20hotelero.pdf> (accessed 15 November 2012).
- Villacorta Rodríguez, D. (2002a). El hotel español. Características del sector "versus" los hoteles integrados en cadenas. *Boletín económico de ICE, Información Comercial Española*, Vol. 2732, pp. 25-36.
- Villacorta Rodríguez, D. (2002b). Importancia de la pertenencia a una cadena en el fracaso del hotel español: una aplicación de la teoría ecológica", paper presented at the ACEDE XII National Conference, 23-24 September, Balearic Islands, available at <http://fama2.us.es:8080/turismo/turismonet1/economia%20del%20turismo/hosteleria/importancia%20de%20la%20pertenencia%20a%20una%20cadena%20hotelera%20en%20la%20industria%20espa%F1ola.pdf> (accessed 15 November 2012).
- Xiao, Q.; O'Neill, J.; Mattila A. (2012). The role of hotel owners: the influence of corporate strategies on hotel performance. *International Journal of Contemporary Hospitality Management*, Vol. 24 No. 1, 2012, pp. 122-139.