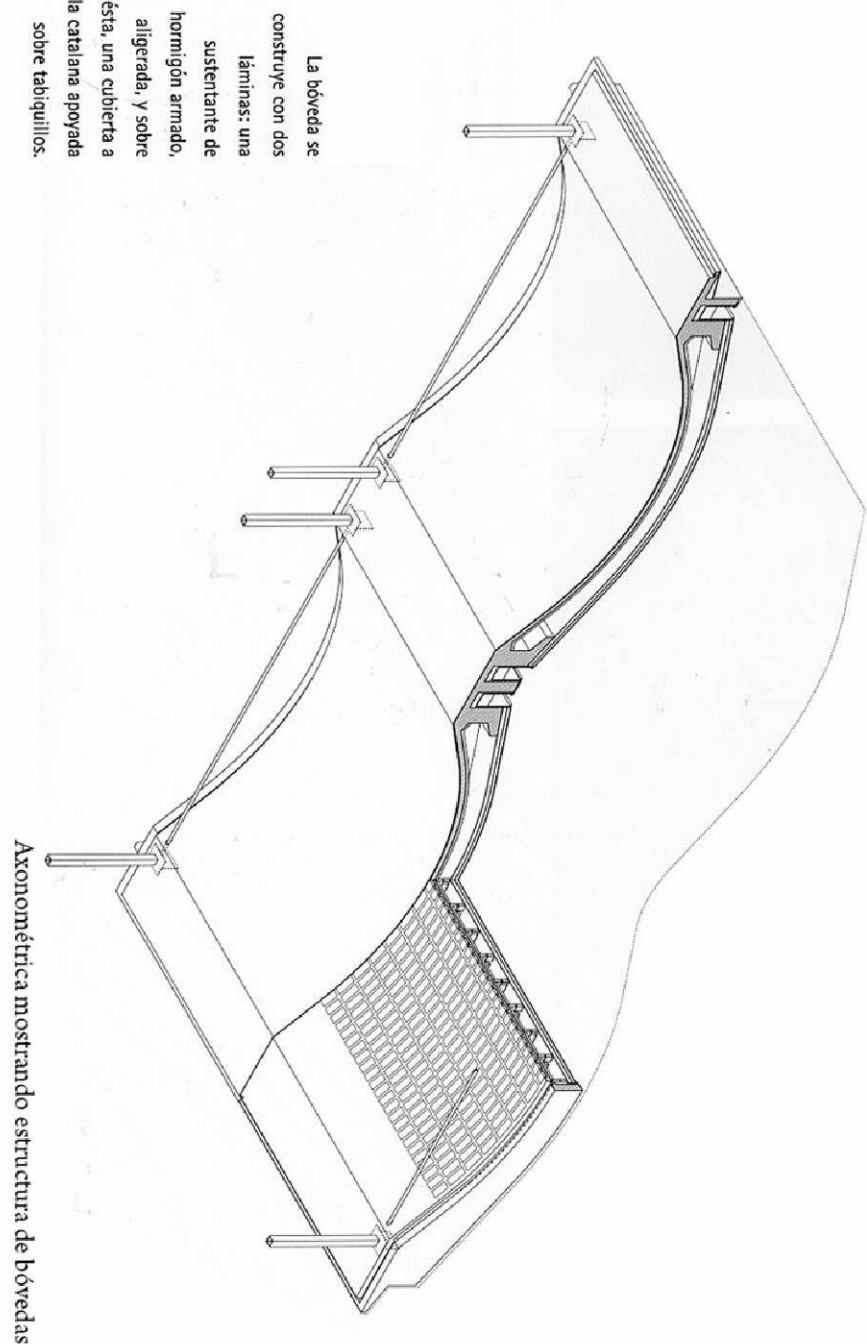


1. Acomodación exterior de buecos  
2. Buecos  
3. Buecos  
4. Buecos  
5. Buecos  
6. Buecos  
7. Buecos  
8. Buecos  
9. Buecos  
10. Buecos

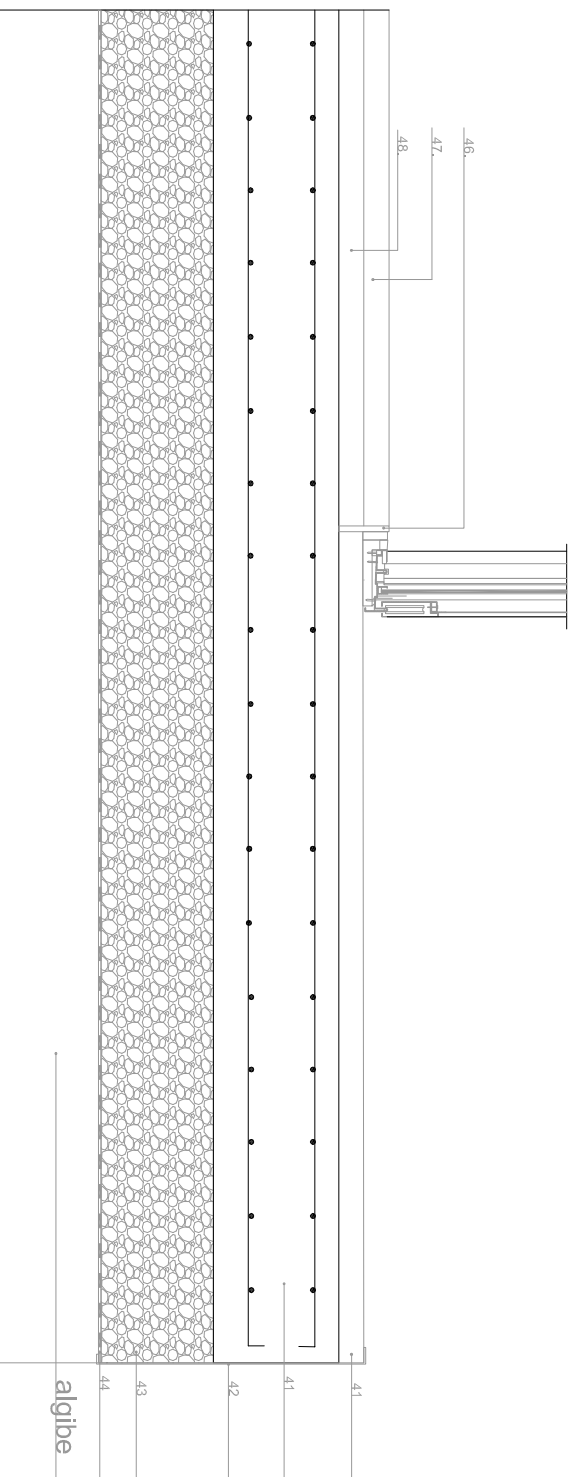
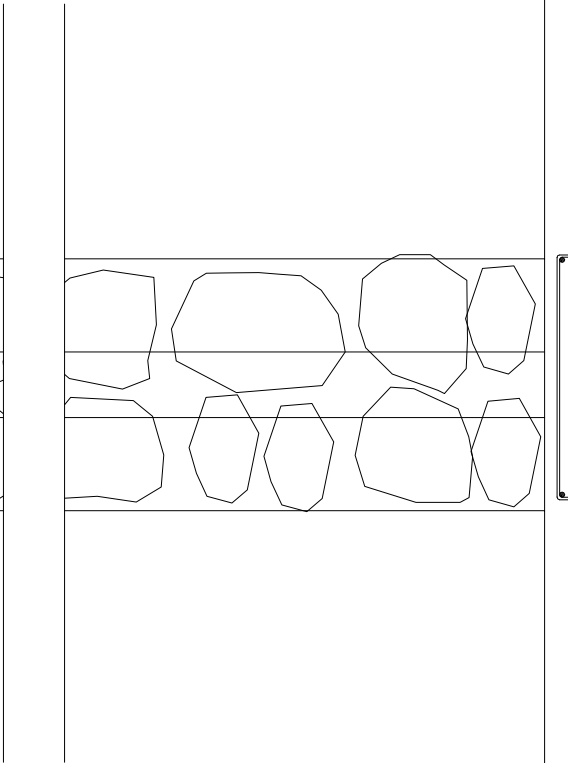
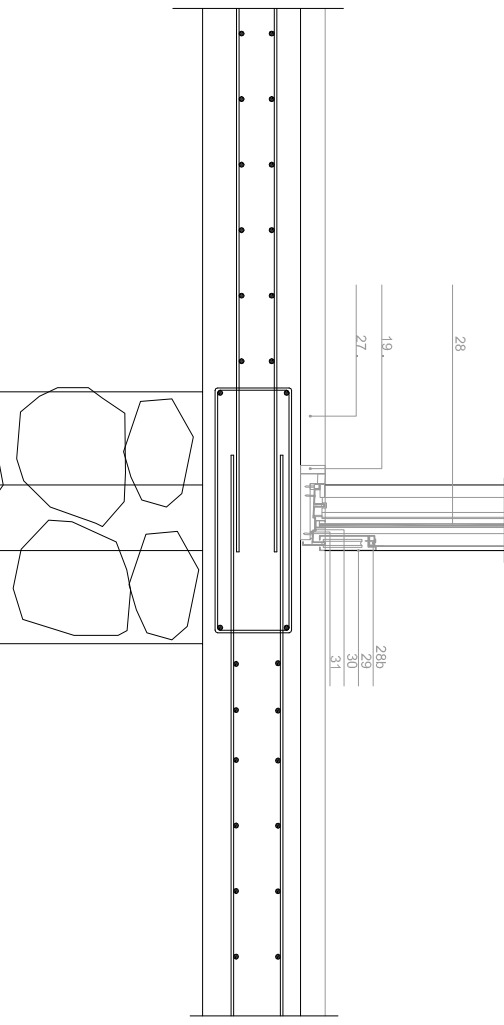
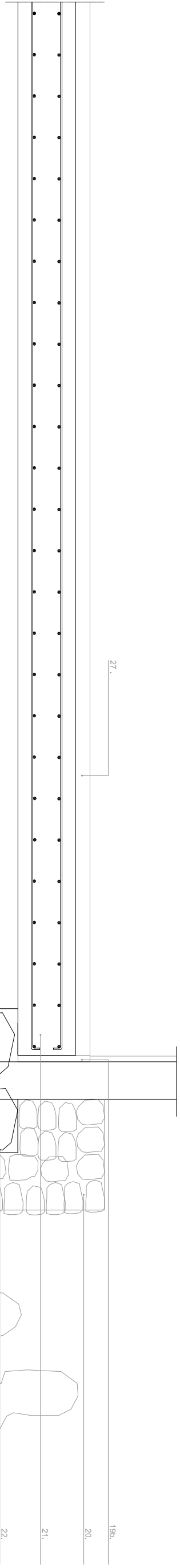
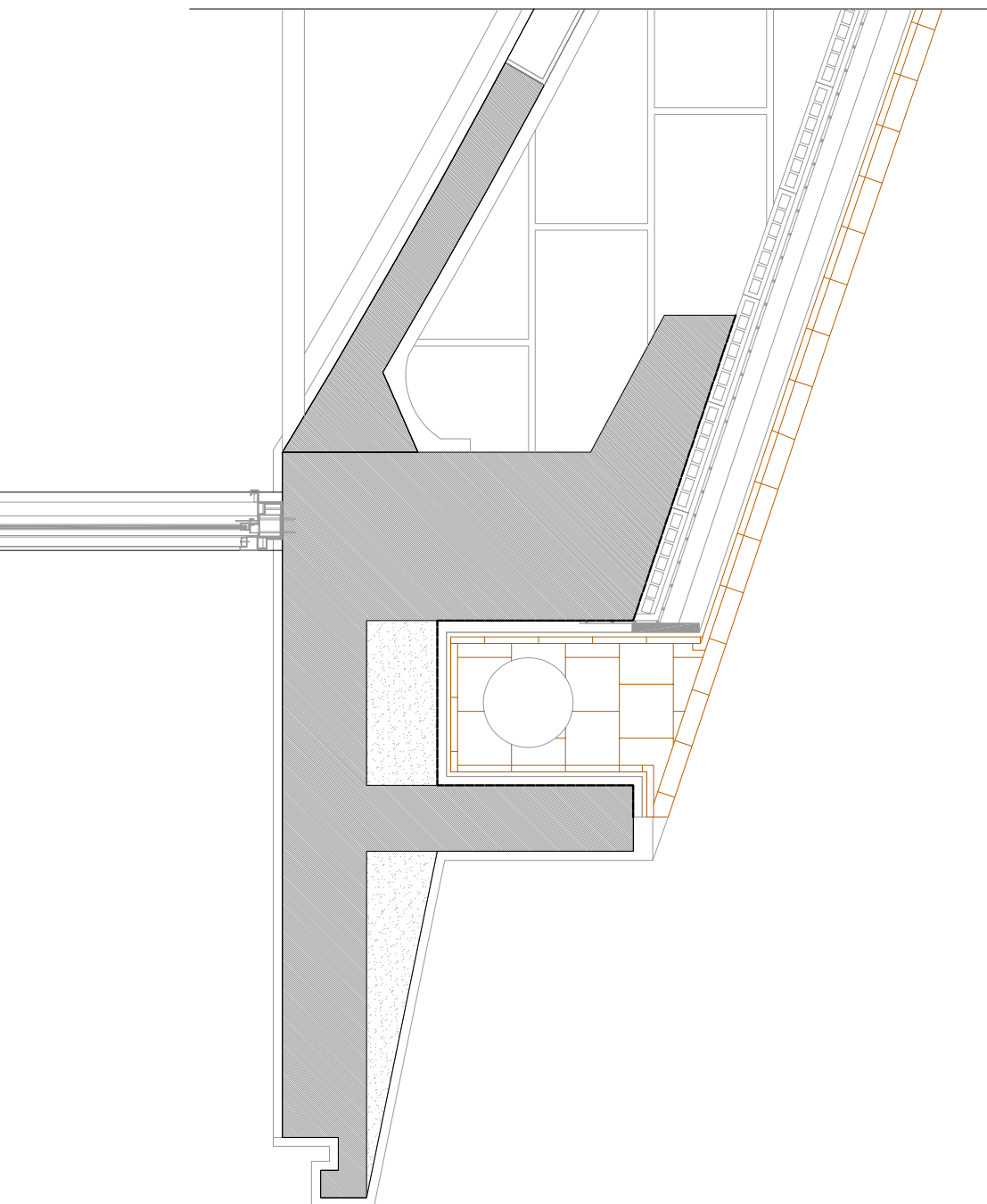
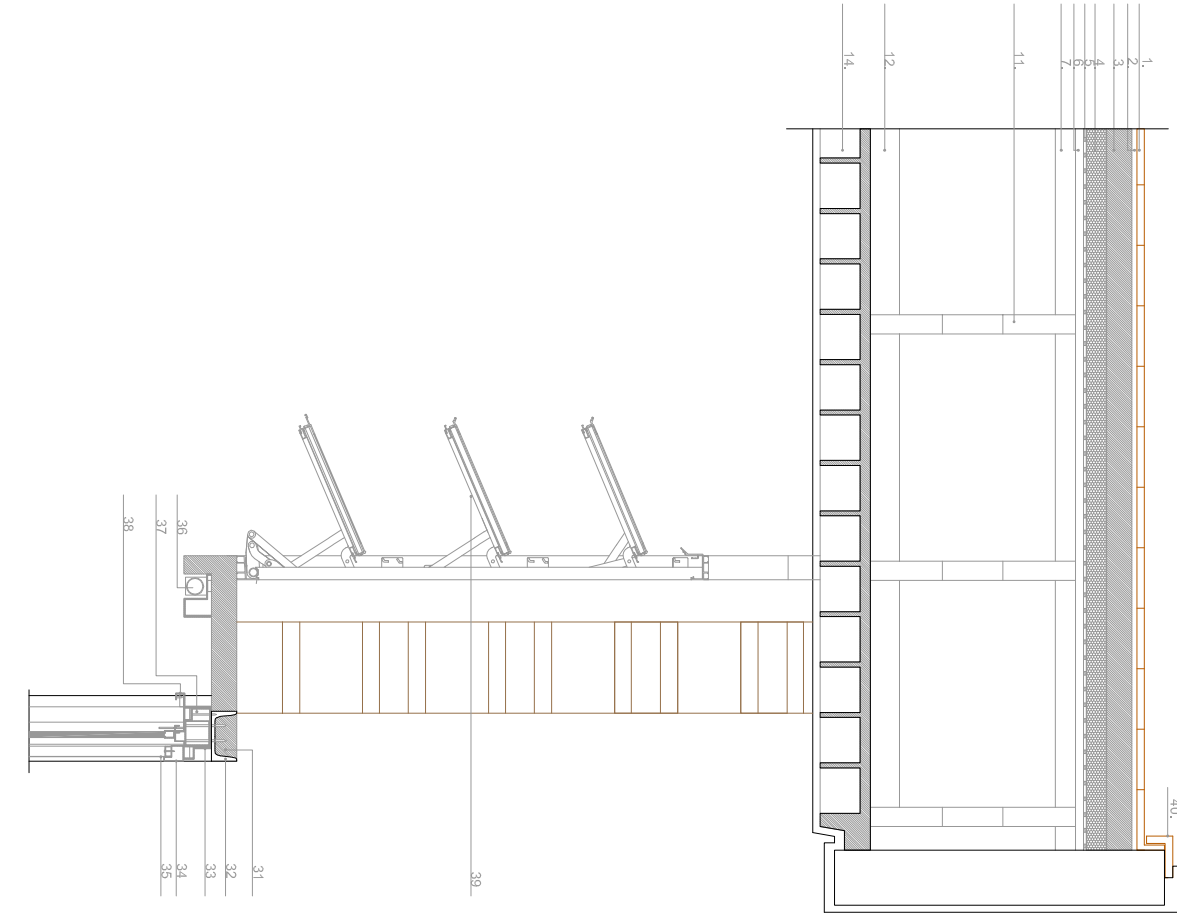
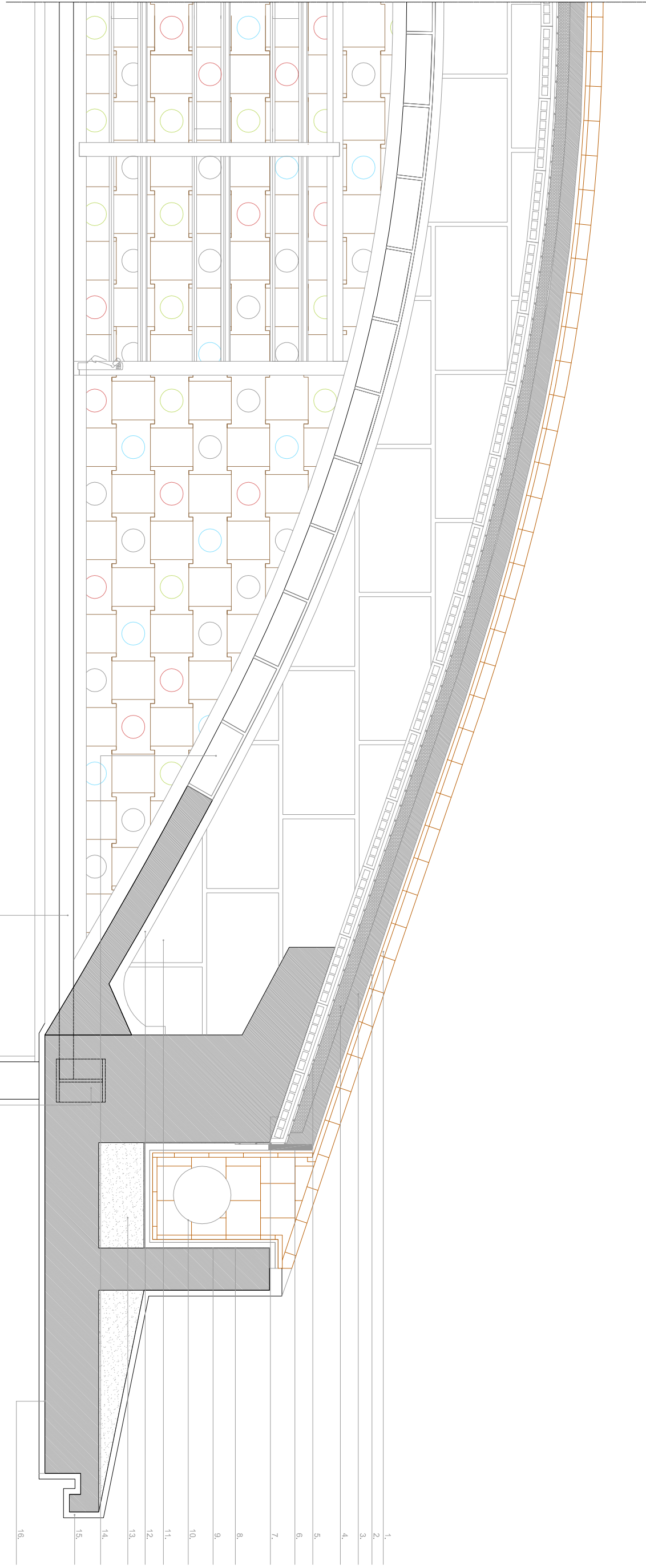


La bóveda se  
construye con dos  
láminas: una  
sustentante de  
hormigón armado,  
aligerada, y sobre  
ella, una cubierta a  
la catina apoyada  
sobre tabiques.

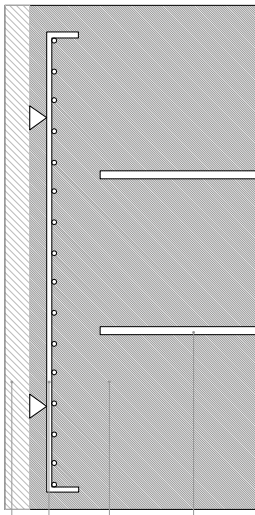
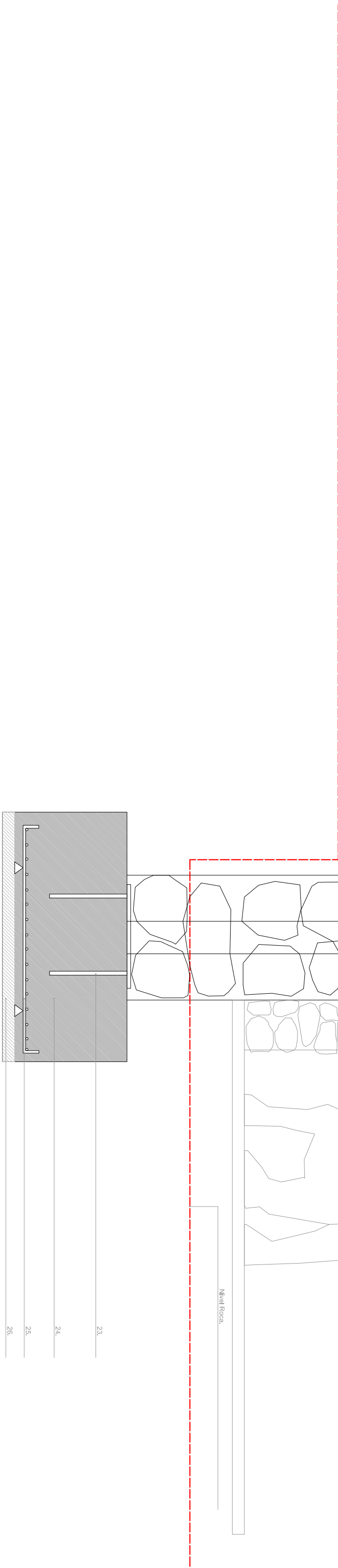
Axonométrica mostrando estructura de bóvedas



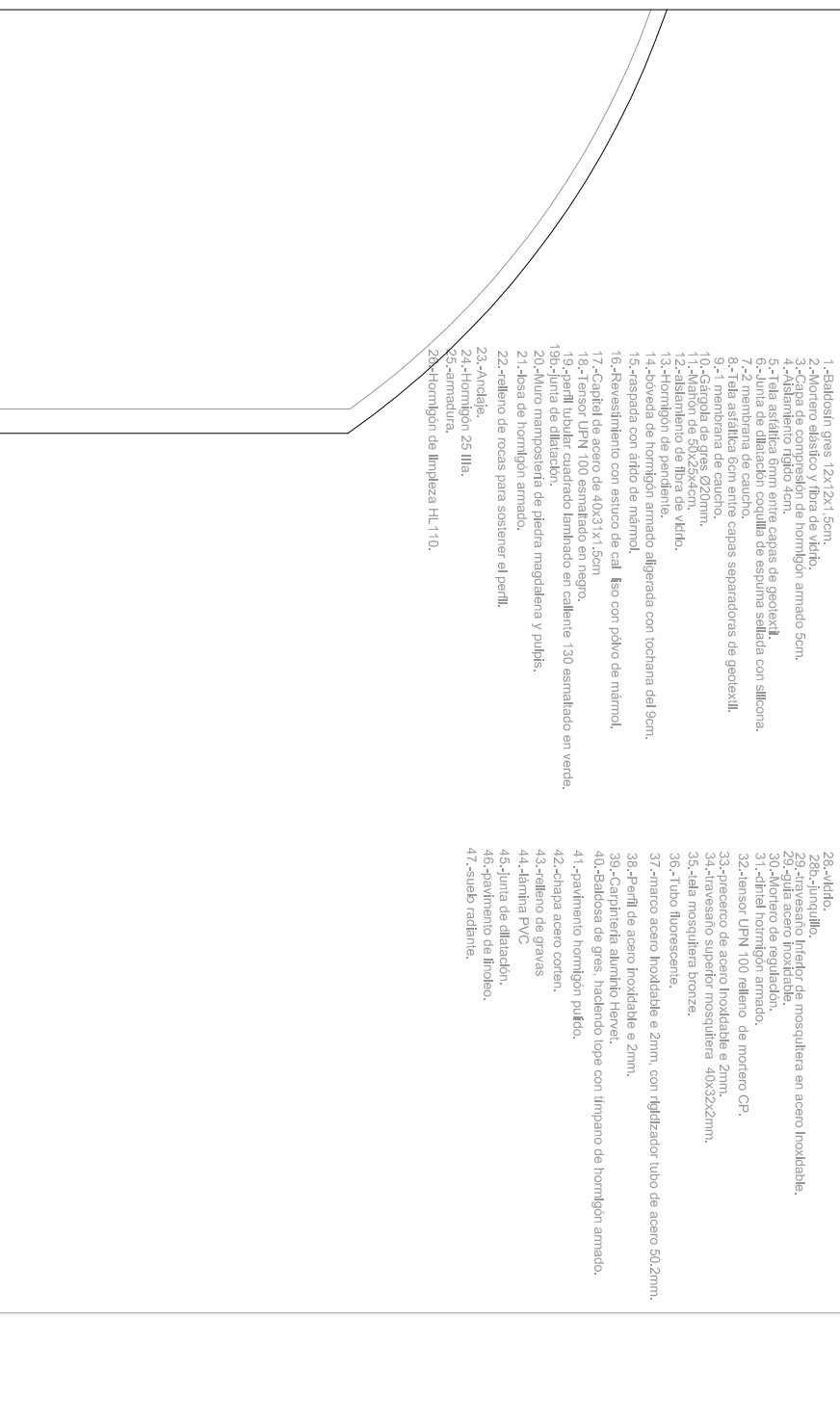
Escala: 1:15



alaje



23  
24  
25  
26



alaje