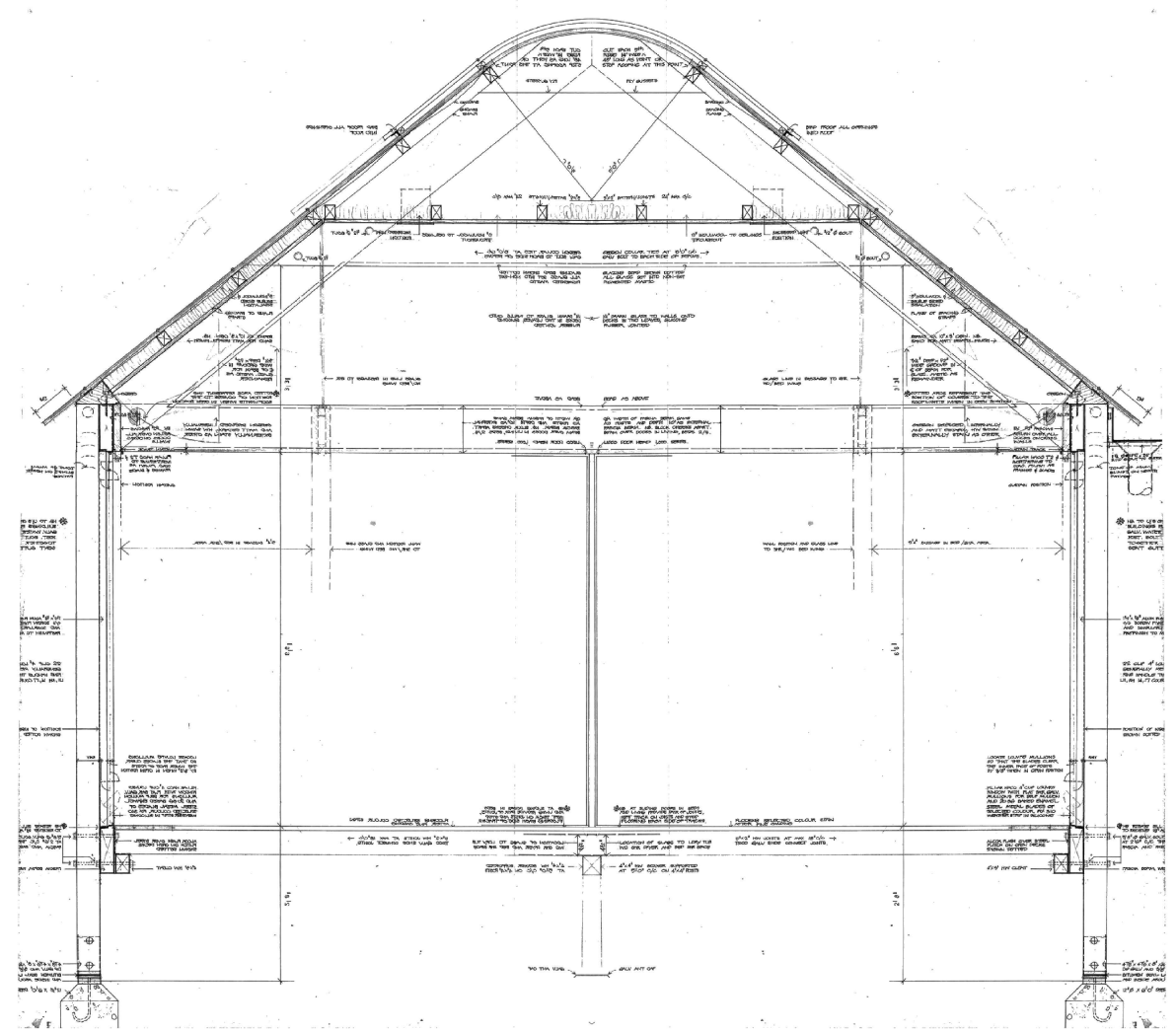
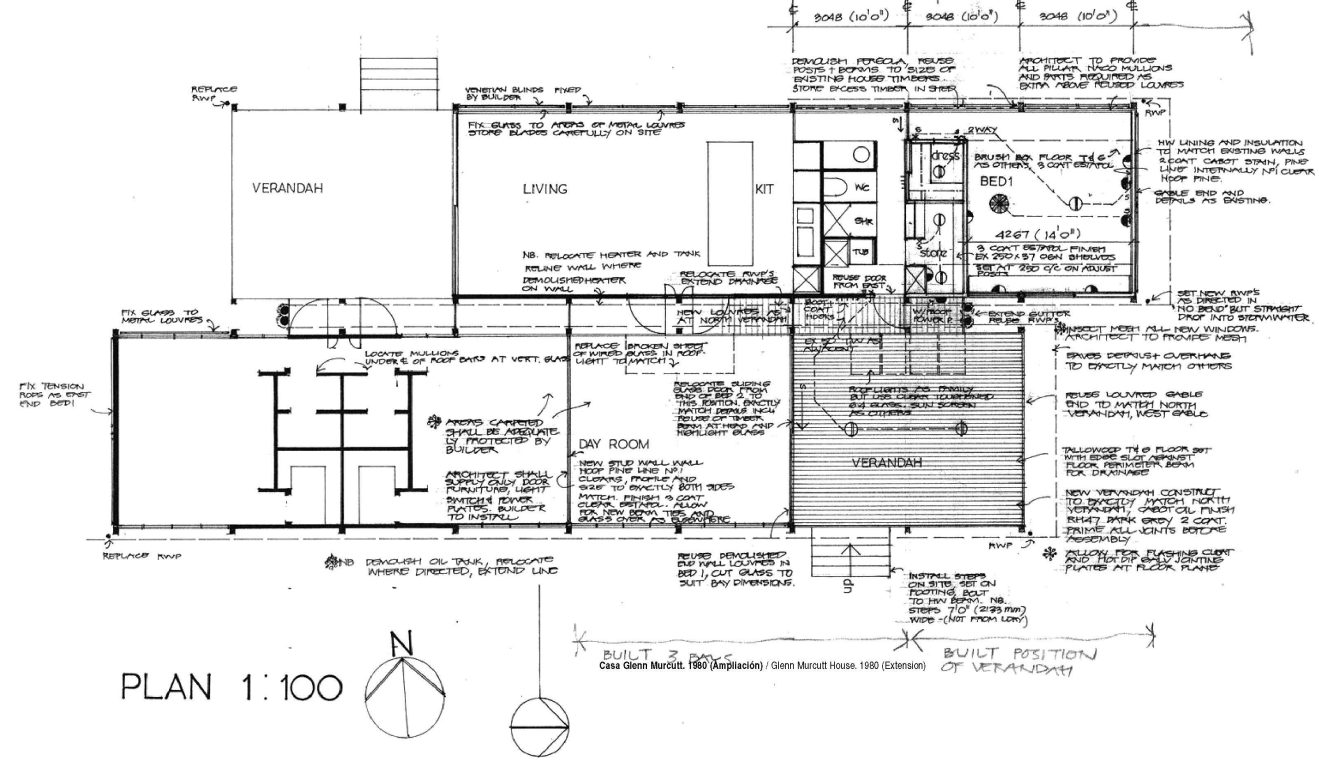
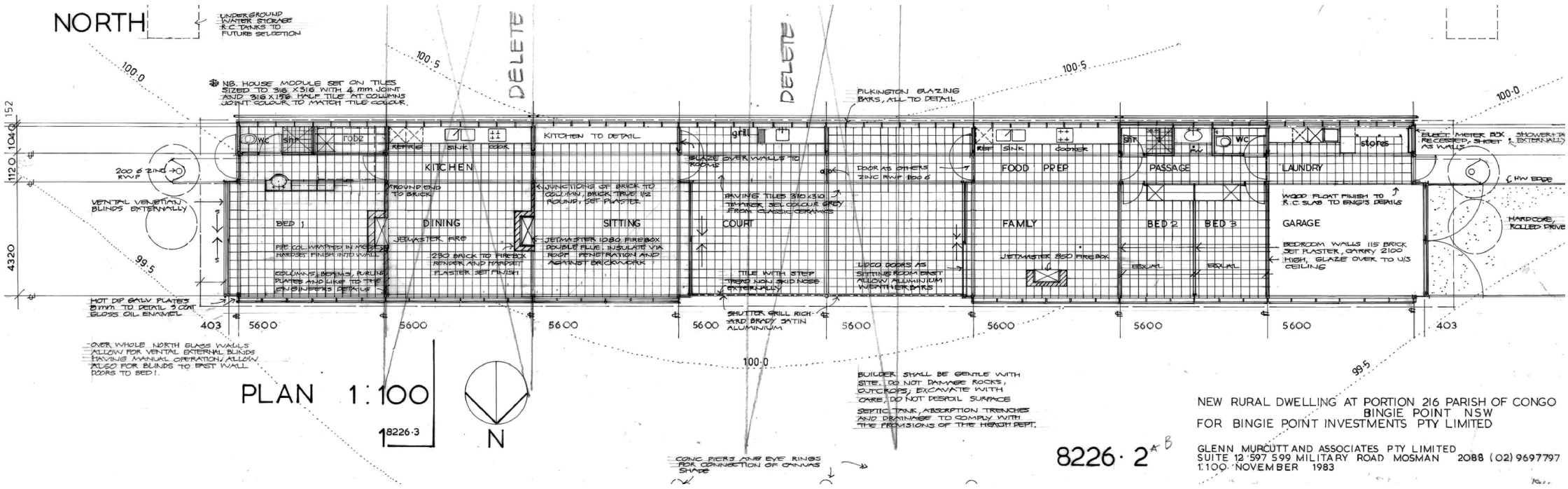


Casa Marie Short / Casa Glenn Murcutt

Kempsey (NSW, AUS)

1974 - 1975 / 1980

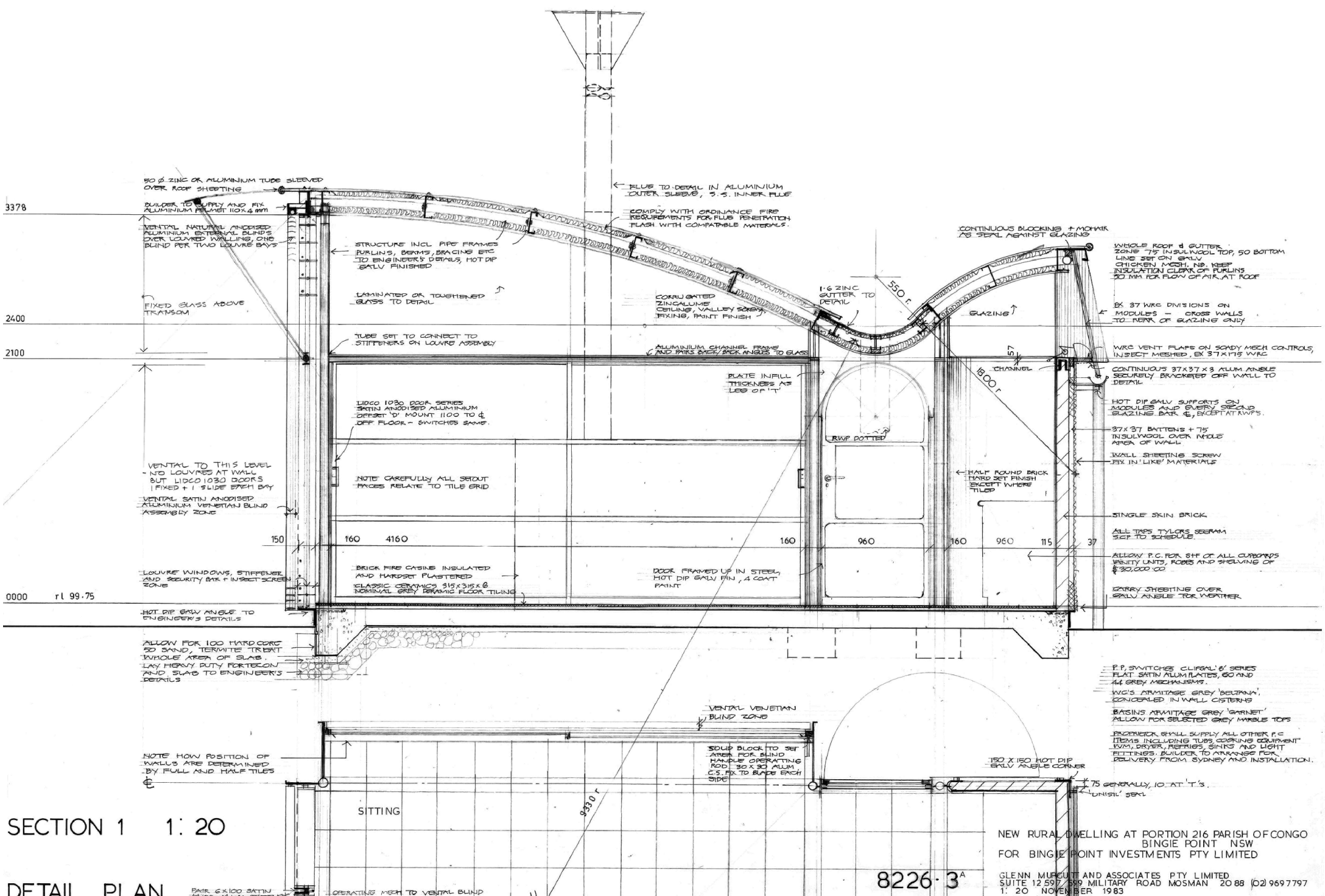




NEW RURAL DWELLING AT PORTION 216 PARISH OF CONGO  
 BINGIE POINT NSW  
 FOR BINGIE POINT INVESTMENTS PTY LIMITED

GLENN MURCUTT AND ASSOCIATES PTY LIMITED  
 SUITE 12 597 599 MILITARY ROAD MOSMAN 2088 (02) 9697797  
 1.100-NOVEMBER 1983

8226-2<sup>A</sup>



NEW RURAL DWELLING AT PORTION 216 PARISH OF CONGO  
 BINGIE POINT NSW  
 FOR BINGIE POINT INVESTMENTS PTY LIMITED

GLENN MURCUTT AND ASSOCIATES PTY LIMITED  
 SUITE 12 597 599 MILITARY ROAD MOSMAN 2088 (02) 9697797  
 1.20-NOVEMBER 1983

8226-3<sup>A</sup>

