

7. ANEXOS

Placa A	1	2	3	4	5	6	7	8	9	Placas cultivo		
										N2	N3	N4
A	ACol_1	ACol_2	ACol_3	ACol_4	ACol_5	ACol_6	ACol_7	ACol_8	ACol_9	ACol_10	ACol_11	ACol_12
B	ACol_13	ACol_14	ACol_15	ACol_16	ACol_17	ACol_18	ACol_19	ACol_20	ACol_21	ACol_22	ACol_23	ACol_24
C	ACol_25	ACol_26	ACol_27	ACol_28	ACol_29	ACol_30	ACol_31	ACol_32	ACol_33	ACol_34	ACol_35	ACol_36
D	ACol_37	ACol_38	ACol_39	ACol_40	ACol_41	ACol_42	ACol_43	ACol_44	ACol_45	ACol_46	ACol_47	ACol_48
E	ACol_49	ACol_50	ACol_51	ACol_52	ACol_53	ACol_54	ACol_55	ACol_56	ACol_57	ACol_58	ACol_59	ACol_60
F	ACol_61	ACol_62	ACol_63	ACol_64	ACol_65	ACol_66	ACol_67	ACol_68	ACol_69	ACol_70	ACol_71	ACol_72
G	ACol_73	ACol_74	ACol_75	ACol_76	ACol_77	ACol_78	ACol_79	ACol_80	ACol_81	ACol_82	ACol_83	ACol_84
H	ACol_85	ACol_86	ACol_87	ACol_88	ACol_89	ACol_90	ACol_91	ACol_92	ACol_93	ACol_94	ACol_95	ACol_96

Figura 7.1. Representación de la placa stock correspondiente a las muestras N2, N3 y N4, indicando la nomenclatura empleada para designar las colonias picadas.

Placa B	1	2	3	4	5	6	7	8	9	10	Placas cultivo	
											N1	N5
A	BCol_1	BCol_2	BCol_3	BCol_4	BCol_5	BCol_6	BCol_7	BCol_8	BCol_9	BCol_10	BCol_11	BCol_12
B	BCol_13	BCol_14	BCol_15	BCol_16	BCol_17	BCol_18	BCol_19	BCol_20	BCol_21	BCol_22	BCol_23	BCol_24
C	BCol_25	BCol_26	BCol_27	BCol_28	BCol_29	BCol_30	BCol_31	BCol_32	BCol_33	BCol_34	BCol_35	BCol_36
D	BCol_37	BCol_38	BCol_39	BCol_40	BCol_41	BCol_42	BCol_43	BCol_44	BCol_45	BCol_46	BCol_47	BCol_48
E	BCol_49	BCol_50	BCol_51	BCol_52	BCol_53	BCol_54	BCol_55	BCol_56	BCol_57	BCol_58	BCol_59	BCol_60
F	BCol_61	BCol_62	BCol_63	BCol_64	BCol_65	BCol_66	BCol_67	BCol_68	BCol_69	BCol_70	BCol_71	BCol_72
G	BCol_73	BCol_74	BCol_75	BCol_76	BCol_77	BCol_78	BCol_79	BCol_80	BCol_81	BCol_82	BCol_83	BCol_84
H	BCol_85	BCol_86	BCol_87	BCol_88	BCol_89	BCol_90	BCol_91	BCol_92	BCol_93	BCol_94	BCol_95	BCol_96

Figura 7.2. Representación de la placa stock correspondiente a las muestras N1 y N5, indicando la nomenclatura empleada para designar las colonias picadas.

Placa C	1	2	3	4	5	6	7	8	9	10	Placas cultivo	
											N6	N7
A	CCol_1	CCol_2	CCol_3	CCol_4	CCol_5	CCol_6	CCol_7	CCol_8	CCol_9	CCol_10	CCol_11	CCol_12
B	CCol_13	CCol_14	CCol_15	CCol_16	CCol_17	CCol_18	CCol_19	CCol_20	CCol_21	CCol_22	CCol_23	CCol_24
C	CCol_25	CCol_26	CCol_27	CCol_28	CCol_29	CCol_30	CCol_31	CCol_32	CCol_33	CCol_34	CCol_35	CCol_36
D	CCol_37	CCol_38	CCol_39	CCol_40	CCol_41	CCol_42	CCol_43	CCol_44	CCol_45	CCol_46	CCol_47	CCol_48
E	CCol_49	CCol_50	CCol_51	CCol_52	CCol_53	CCol_54	CCol_55	CCol_56	CCol_57	CCol_58	CCol_59	CCol_60
F	CCol_61	CCol_62	CCol_63	CCol_64	CCol_65	CCol_66	CCol_67	CCol_68	CCol_69	CCol_70	CCol_71	CCol_72
G	CCol_73	CCol_74	CCol_75	CCol_76	CCol_77	CCol_78	CCol_79	CCol_80	CCol_81	CCol_82	CCol_83	CCol_84
H	CCol_85	CCol_86	CCol_87	CCol_88	CCol_89	CCol_90	CCol_91	CCol_92	CCol_93	CCol_94	CCol_95	CCol_96

Figura 7.3. Representación de la placa stock correspondiente a las muestras N6 y N7, indicando la nomenclatura empleada para designar las colonias picadas.

Placa D	1	2	3	4	5	6	7	8	9	10	Placas cultivo	
											N8	N9
A	DCol_1	DCol_2	DCol_3	DCol_4	DCol_5	DCol_6	DCol_7	DCol_8	DCol_9	DCol_10	DCol_11	DCol_12
B	DCol_13	DCol_14	DCol_15	DCol_16	DCol_17	DCol_18	DCol_19	DCol_20	DCol_21	DCol_22	DCol_23	DCol_24
C	DCol_25	DCol_26	DCol_27	DCol_28	DCol_29	DCol_30	DCol_31	DCol_32	DCol_33	DCol_34	DCol_35	DCol_36
D	DCol_37	DCol_38	DCol_39	DCol_40	DCol_41	DCol_42	DCol_43	DCol_44	DCol_45	DCol_46	DCol_47	DCol_48
E	DCol_49	DCol_50	DCol_51	DCol_52	DCol_53	DCol_54	DCol_55	DCol_56	DCol_57	DCol_58	DCol_59	DCol_60
F	DCol_61	DCol_62	DCol_63	DCol_64	DCol_65	DCol_66	DCol_67	DCol_68	DCol_69	DCol_70	DCol_71	DCol_72
G	DCol_73	DCol_74	DCol_75	DCol_76	DCol_77	DCol_78	DCol_79	DCol_80	DCol_81	DCol_82	DCol_83	DCol_84
H	DCol_85	DCol_86	DCol_87	DCol_88	DCol_89	DCol_90	DCol_91	DCol_92	DCol_93	DCol_94	DCol_95	DCol_96

Figura 7.4. Representación de la placa stock correspondiente a las muestras N8 y N9, indicando la nomenclatura empleada para designar las colonias picadas.

Placa E	1	2	3	4	5	6	7	8	9	10	Placas cultivo	
											N10	N11
A	ECol_1	ECol_2	ECol_3	ECol_4	ECol_5	ECol_6	ECol_7	ECol_8	ECol_9	ECol_10	ECol_11	ECol_12
B	ECol_13	ECol_14	ECol_15	ECol_16	ECol_17	ECol_18	ECol_19	ECol_20	ECol_21	ECol_22	ECol_23	ECol_24
C	ECol_25	ECol_26	ECol_27	ECol_28	ECol_29	ECol_30	ECol_31	ECol_32	ECol_33	ECol_34	ECol_35	ECol_36
D	ECol_37	ECol_38	ECol_39	ECol_40	ECol_41	ECol_42	ECol_43	ECol_44	ECol_45	ECol_46	ECol_47	ECol_48
E	ECol_49	ECol_50	ECol_51	ECol_52	ECol_53	ECol_54	ECol_55	ECol_56	ECol_57	ECol_58	ECol_59	ECol_60
F	ECol_61	ECol_62	ECol_63	ECol_64	ECol_65	ECol_66	ECol_67	ECol_68	ECol_69	ECol_70	ECol_71	ECol_72
G	ECol_73	ECol_74	ECol_75	ECol_76	ECol_77	ECol_78	ECol_79	ECol_80	ECol_81	ECol_82	ECol_83	ECol_84
H	ECol_85	ECol_86	ECol_87	ECol_88	ECol_89	ECol_90	ECol_91	ECol_92	ECol_93	ECol_94	ECol_95	ECol_96

Figura 7.5. Representación de la placa stock correspondiente a las muestras N10 y N11, indicando la nomenclatura empleada para designar las colonias picadas.

Placa F	1	2	3	4	5	6	7	8	9	10	Placas cultivo	
											N23	N24
A	FCol_1	FCol_2	FCol_3	FCol_4	FCol_5	FCol_6	FCol_7	FCol_8	FCol_9	FCol_10	FCol_11	FCol_12
B	FCol_13	FCol_14	FCol_15	FCol_16	FCol_17	FCol_18	FCol_19	FCol_20	FCol_21	FCol_22	FCol_23	FCol_24
C	FCol_25	FCol_26	FCol_27	FCol_28	FCol_29	FCol_30	FCol_31	FCol_32	FCol_33	FCol_34	FCol_35	FCol_36
D	FCol_37	FCol_38	FCol_39	FCol_40	FCol_41	FCol_42	FCol_43	FCol_44	FCol_45	FCol_46	FCol_47	FCol_48
E	FCol_49	FCol_50	FCol_51	FCol_52	FCol_53	FCol_54	FCol_55	FCol_56	FCol_57	FCol_58	FCol_59	FCol_60
F	FCol_61	FCol_62	FCol_63	FCol_64	FCol_65	FCol_66	FCol_67	FCol_68	FCol_69	FCol_70	FCol_71	FCol_72
G	FCol_73	FCol_74	FCol_75	FCol_76	FCol_77	FCol_78	FCol_79	FCol_80	FCol_81	FCol_82	FCol_83	FCol_84
H	FCol_85	FCol_86	FCol_87	FCol_88	FCol_89	FCol_90	FCol_91	FCol_92	FCol_93	FCol_94	FCol_95	FCol_96

Figura 7.6. Representación de la placa stock correspondiente a las muestras N23 y N24, indicando la nomenclatura empleada para designar las colonias picadas.

Placa G	1	2	3	4	5	6	7	8	9	10	Placa cultivo	
											N25	
A	GCol_1	GCol_2	GCol_3	GCol_4	GCol_5	GCol_6	GCol_7	GCol_8	GCol_9	GCol_10	GCol_11	GCol_12
B	GCol_13	GCol_14	GCol_15	GCol_16	GCol_17	GCol_18	GCol_19	GCol_20	GCol_21	GCol_22	GCol_23	GCol_24
C	GCol_25	GCol_26	GCol_27	GCol_28	GCol_29	GCol_30	GCol_31	GCol_32	GCol_33	GCol_34	GCol_35	GCol_36

Figura 7.7. Representación de la placa stock correspondiente a la muestra N25, indicando la nomenclatura empleada para designar las colonias picadas.

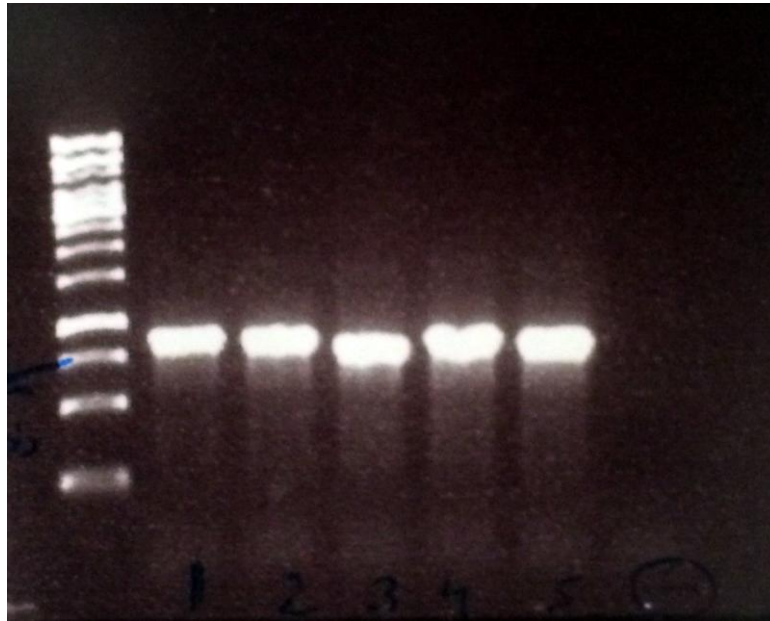


Figura 7.8. Resultado de la electroforesis de los productos de PCR obtenidos a partir de cinco controles positivos (dos de ellos procedentes de cultivo mixto y los otros tres obtenidos de cultivo puro), incluyendo un marcador de pesos moleculares en el primer carril (GeneRuler 1 kb) y un control negativo en el séptimo carril. Las bandas aparecen a una altura correspondiente a las 750 pb, aproximadamente.