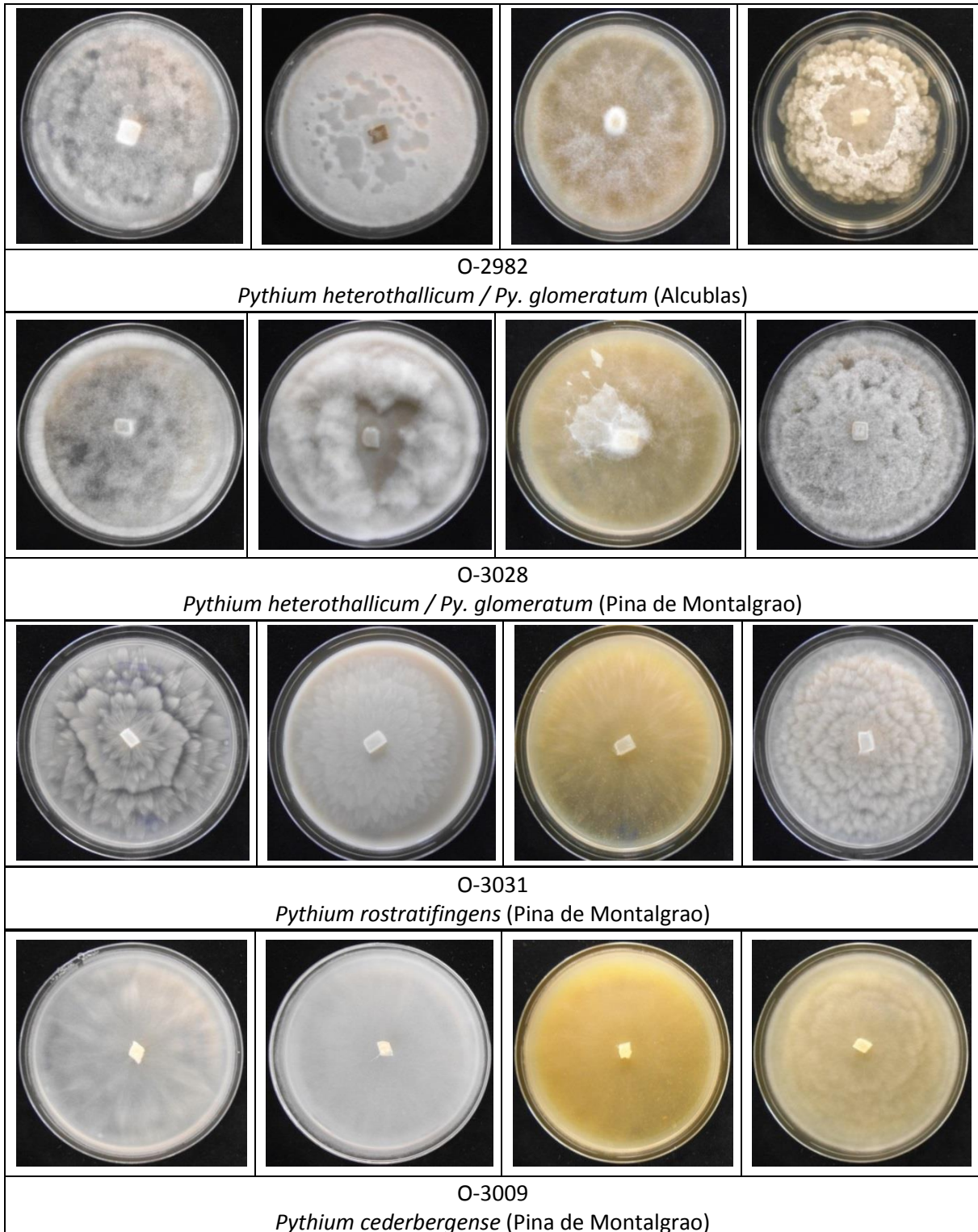
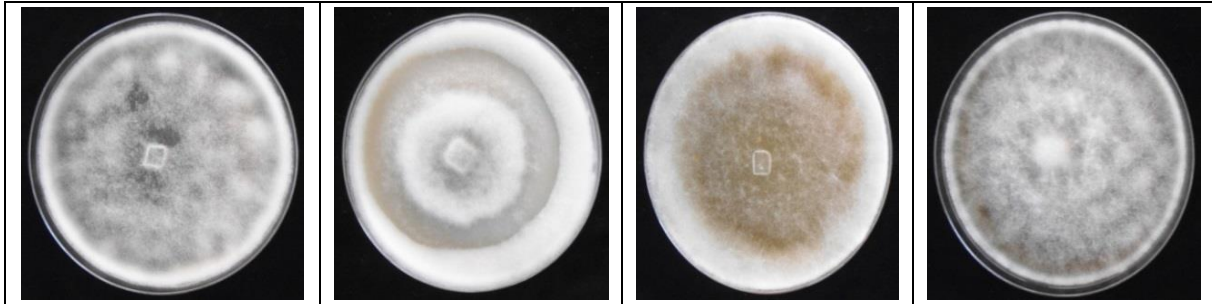


CAPÍTULO VII: ANEJOS

**ANEJO I: MORFOLOGÍA DE LA COLONIA DE OOMICETOS
CRECIDOS EN DIFERENTES MEDIOS DE CULTIVO.**

Morfología de la colonia de oomicetos crecidos en diferentes medios de cultivo (De izquierda a derecha MEA, OA, V8 y PDA).





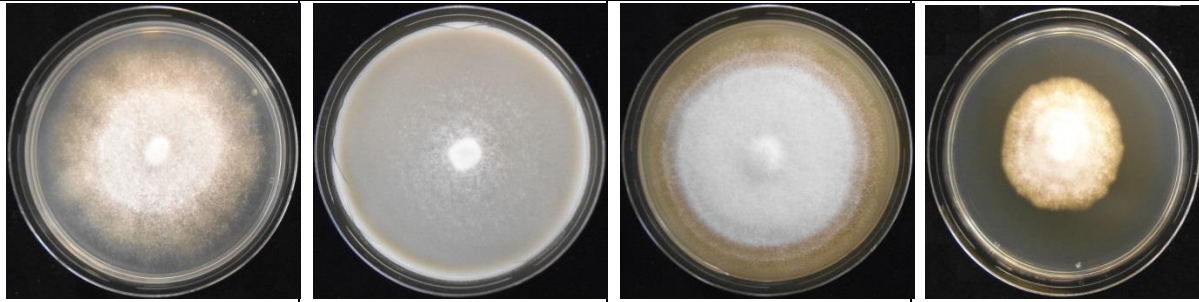
O-2959

Pythium vanterpoolii (Alcublas)



O-2931

Pythium heterothallicum / *Py. glomeratum* (Alcoi)

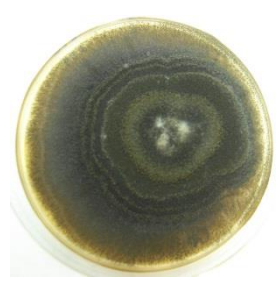


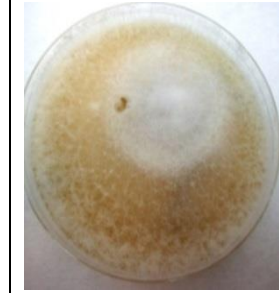

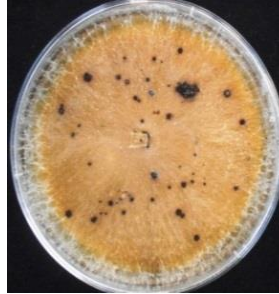
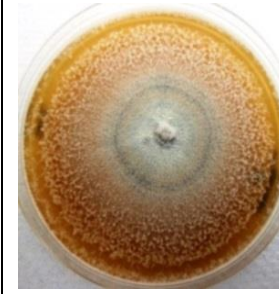


O-2976

Phytophthora psychrophila (Alcoi)

**ANEJO II: MORFOLOGÍA DE LA COLONIA DE
AISLADOS FÚNGICOS CULTIVADOS EN MEDIO PDA.**

Morfología de la colonia de aislados fúngicos cultivados en medio PDA.

			
<i>Alternaria</i> sp. (Pina de Montalgrao)	<i>Gliocladium</i> sp. (Pina de Montalgrao)	<i>Colletrotrichum</i> sp. (Pina de Montalgrao)	<i>Fusarium</i> sp. (Pina de Montalgrao)
			
<i>Fusarium</i> sp. (Alcublas)	<i>Fusarium</i> sp. (Alcoi)	<i>Fusarium solani</i> (Alcublas)	