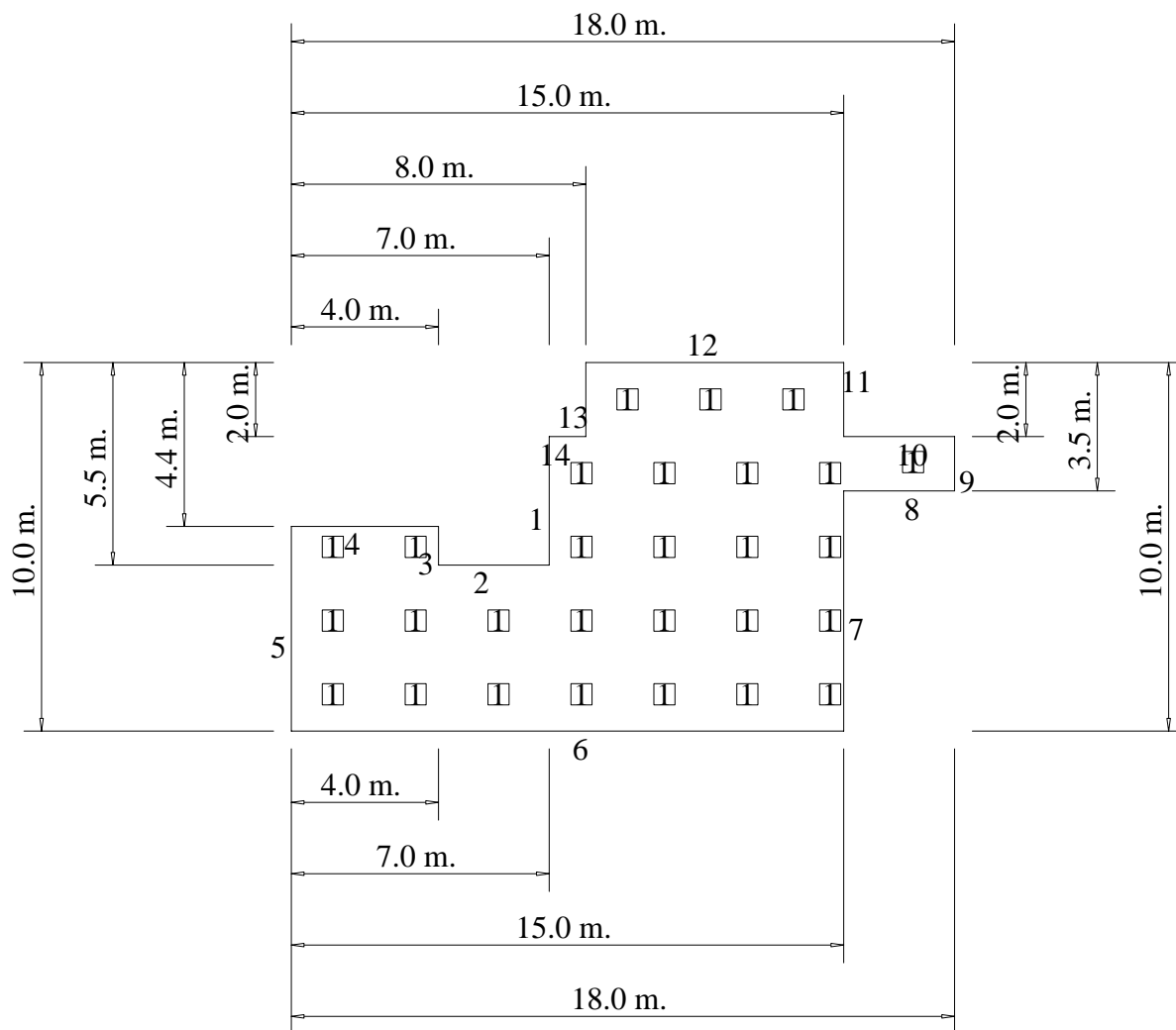


Descripción:

Cálculos Luminotécnicos

Instalación:

COCINA



Altura del local: 2.5 m.

PROYECTO: Instalación Eléctrica en HOTEL BT

FECHA: 08-02-2006

Pared 1	0.500
Pared 2	0.500
Pared 3	0.500
Pared 4	0.500
Pared 5	0.500
Pared 6	0.500
Pared 7	0.500
Pared 8	0.500
Pared 9	0.500
Pared 10	0.500
Pared 11	0.500
Pared 12	0.500
Pared 13	0.500
Pared 14	0.500
Suelo	0.200
Techo	0.700

Factor de mantenimiento: **0.8**

LUMINARIAS Y LAMPARAS SELECCIONADAS

Nº LUMINARIA		LAMPARA	
ID	Modelo	Tipo	Flujo Descripción
1	214-IET-F	4x18 W FLUOR.	1.35 Fluorescencia

LISTADO DE DISPOSICIONES

Nº	Tipo	Origen X	Origen Y	Inter. X	Inter. Y	Nº X	Nº Y	Modelo
----	------	----------	----------	----------	----------	------	------	--------

1 Cenital 1.00 1.12 2.00 2.25 5 8 214-IET-F 4x18Fa

X	Y	Suspen.	Theta	Sigma	Alfa
3.00	7.87	0.00	0.00	0.00	0.00
3.00	10.12	0.00	0.00	0.00	0.00
3.00	12.37	0.00	0.00	0.00	0.00
3.00	14.62	0.00	0.00	0.00	0.00
5.00	1.12	0.00	0.00	0.00	0.00
5.00	3.37	0.00	0.00	0.00	0.00
5.00	7.87	0.00	0.00	0.00	0.00
5.00	10.12	0.00	0.00	0.00	0.00
5.00	12.37	0.00	0.00	0.00	0.00
5.00	14.62	0.00	0.00	0.00	0.00
7.00	1.12	0.00	0.00	0.00	0.00
7.00	3.37	0.00	0.00	0.00	0.00
7.00	5.62	0.00	0.00	0.00	0.00
7.00	7.87	0.00	0.00	0.00	0.00
7.00	10.12	0.00	0.00	0.00	0.00
7.00	12.37	0.00	0.00	0.00	0.00
7.00	14.62	0.00	0.00	0.00	0.00
9.00	1.12	0.00	0.00	0.00	0.00
9.00	3.37	0.00	0.00	0.00	0.00
9.00	5.62	0.00	0.00	0.00	0.00
9.00	7.87	0.00	0.00	0.00	0.00
9.00	10.12	0.00	0.00	0.00	0.00
9.00	12.37	0.00	0.00	0.00	0.00
9.00	14.62	0.00	0.00	0.00	0.00

Luminarias :

Nº	X	Y	Suspen.	Theta	Sigma	Alfa	Modelo
1	1.00	9.12	0.00	0.00	0.00	0.00	214-IET-F 4x18Fa
1	1.00	11.37	0.00	0.00	0.00	0.00	214-IET-F 4x18Fa
1	1.00	13.62	0.00	0.00	0.00	0.00	214-IET-F 4x18Fa



MINACIÓN TÉCNICA, S.L.
ELÉCTRICA EN BT EN UN HOTEL 4 ESTRELLAS
A"
ndia (Valencia)
Ing. Técnico Industrial--JULIAN MALONDA MARTI

PROYECTO: Instalación Eléctrica en HOTEL BT

FECHA: 08-02-2006

1	2.70	16.86	0.00	0.00	0.00	0.00	0.00	214-IET-F 4x18Fa
---	------	-------	------	------	------	------	------	------------------

Zona: Plano de Trabajo

MATRIZ DE ILUMINACION HORIZONTAL: Valores iniciales en lux(Con reflexiones)

X/Y (m.)	0.00	1.80	3.60	5.40	7.20	8.99	10.79	12.59	14.39	16.19	17.99	U1
0.42	---	---	---	---	---	575	608	581	434	---	---	0.71
1.25	---	---	---	---	---	686	732	706	550	---	---	0.75
2.08	---	---	---	---	385	764	821	819	721	480	253	0.31
2.92	---	---	---	---	569	769	823	842	775	561	277	0.33
3.75	---	---	---	---	625	809	859	891	789	---	---	0.70
4.58	313	625	557	---	643	810	856	885	804	---	---	0.35
5.42	388	727	730	---	707	820	858	891	808	---	---	0.44
6.25	423	788	820	605	769	838	869	901	815	---	---	0.47
7.08	413	771	827	791	792	816	841	870	789	---	---	0.47
7.92	413	773	855	854	826	823	843	873	790	---	---	0.47
8.75	368	693	770	778	748	737	752	782	712	---	---	0.47
9.58	299	573	669	677	619	602	622	679	619	---	---	0.44
Ut	0.71	0.73	0.65	0.71	0.47	0.69	0.70	0.64	0.53	0.86	0.91	

ILUMINANCIAS HORIZONTALES:

MEDIA: $E_m = 700.13 \text{ lux}$

MINIMA: $E_{min} = 253.22 \text{ lux}$

MAXIMA: $E_{max} = 900.82 \text{ lux}$

MEDIA EN SERVICIO: $E_{ms} = 560.10 \text{ lux}$

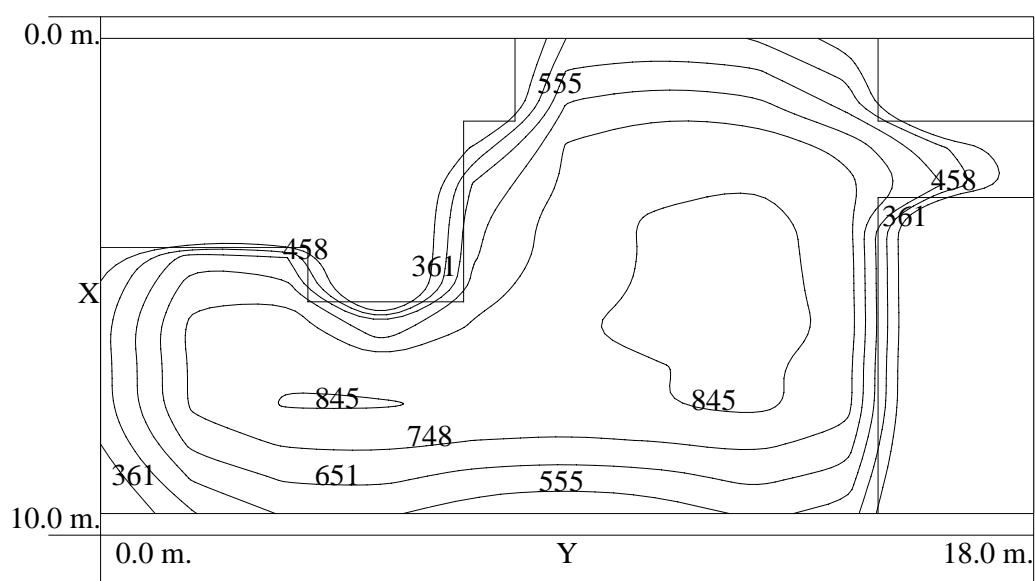
UNIFORMIDADES:

MEDIA: $U_m = E_{min}/E_m = 0.36$

EXTREMA: $U_{ex} = E_{min}/E_{max} = 0.28$

Plano de Trabajo

ILUMINACION HORIZONTAL: Valores en lux.(Con reflexiones) (H = 0.00 m.)



Plano de Trabajo

ILUMINACION HORIZONTAL: Valores en lux.(Con reflexiones) (H = 0.00 m.)

