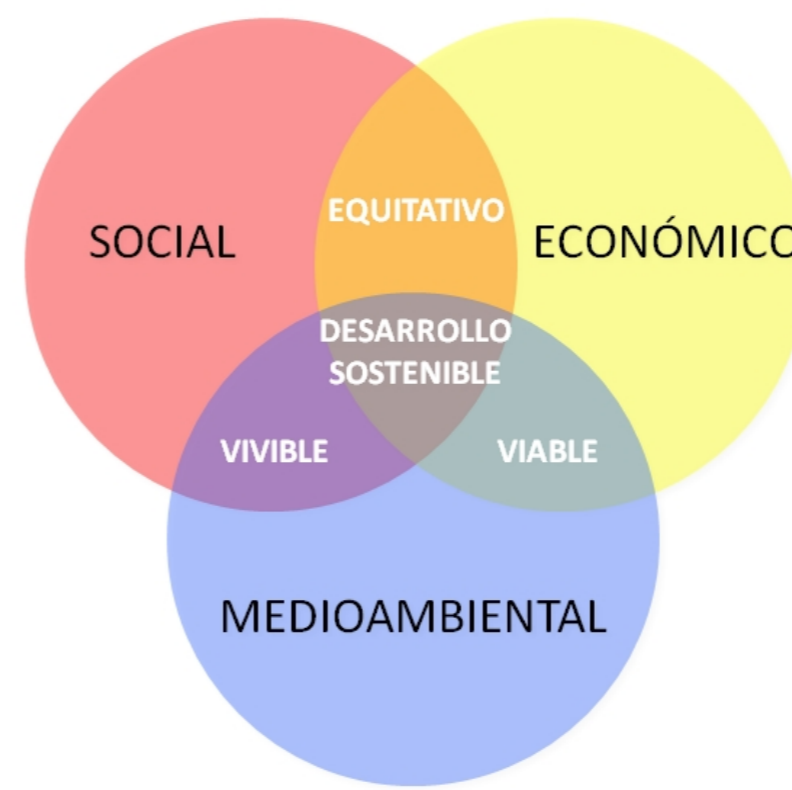


Evaluación del impacto ambiental mediante indicadores de sostenibilidad.

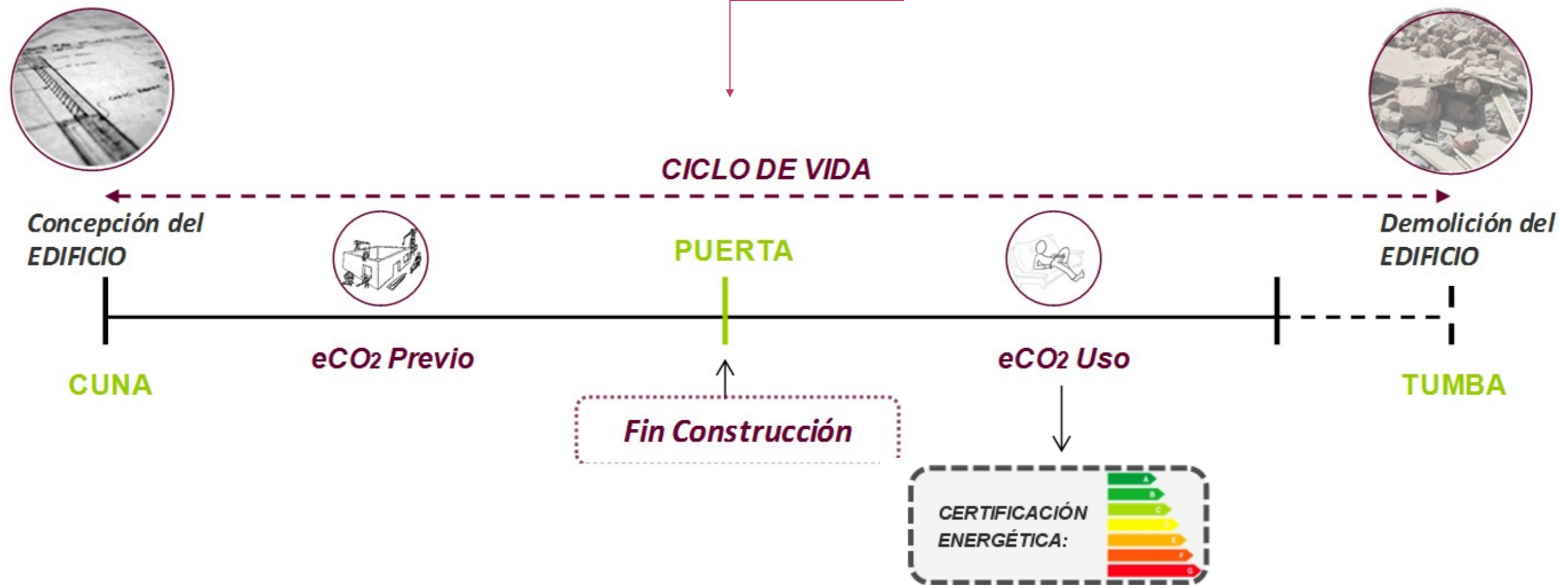
¿Qué es la sostenibilidad?

“El desarrollo que satisface las necesidades del presente sin comprometer a las generaciones futuras, garantizando el equilibrio entre el crecimiento económico, cuidado del medio ambiente y bienestar social”



INDICADORES IMPACTO MEDIOAMBIENTAL

- Huella CO2
- Energía embebida



EVALUACIÓN AMBIENTAL EN LA ENVOLVENTE DE UN EDIFICIO

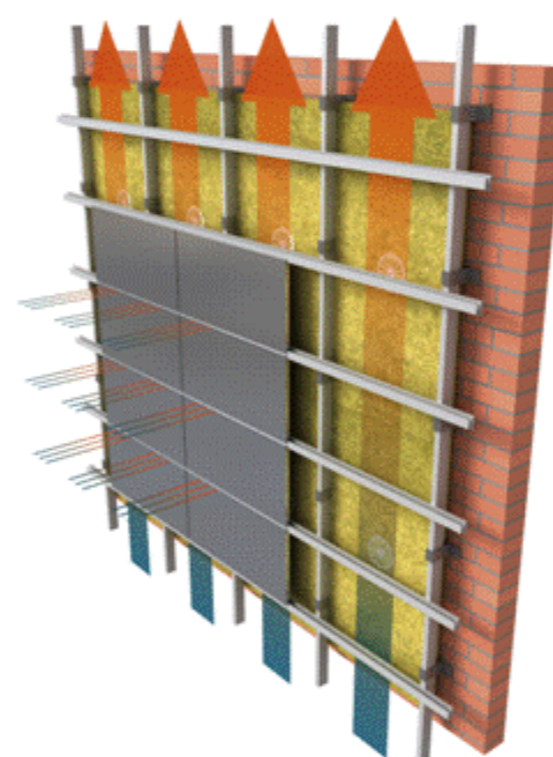
Fachada LP+MW+YESO

Energía embebida: 162.041,08 MJ/kg
Huella de CO2: 16.630,18 Kg eq. CO2
Precio: 14.526,18€



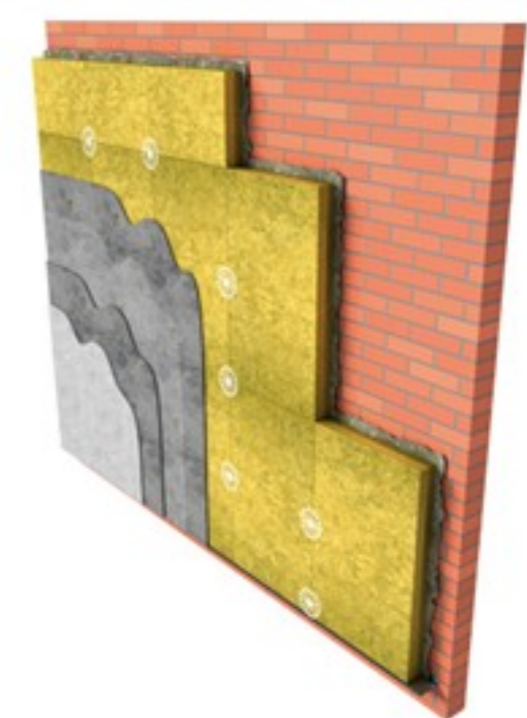
Fachada ventilada

Energía embebida: 271.092,89 MJ/kg
Huella de CO2: 18.546,88 Kg eq. CO2
Precio: 30.803,57 €



Fachada SATE

Energía embebida: 254.182,66 MJ/kg
Huella de CO2: 11.9291,54 Kg eq. CO2
Precio: 15.686,18€



CONSUMO DE ENERGÍA PRIMARIA NO RENOVABLE [kWh/m² año]		EMISIONES DE DIÓXIDO DE CARBONO [kgCO2/ m² año]																													
<table border="1"> <tr><td>< 23.8</td><td>A</td></tr> <tr><td>23.8-45.1</td><td>B</td></tr> <tr><td>45.1-76.2</td><td>C</td></tr> <tr><td>76.2-122.1</td><td>D</td></tr> <tr><td>122.1-229.6</td><td>E</td></tr> <tr><td>229.6-268.6</td><td>F</td></tr> <tr><td>≥ 268.6</td><td>G</td></tr> </table>	< 23.8	A	23.8-45.1	B	45.1-76.2	C	76.2-122.1	D	122.1-229.6	E	229.6-268.6	F	≥ 268.6	G	110.2 D	<table border="1"> <tr><td>< 8.5</td><td>A</td></tr> <tr><td>8.5-16.4</td><td>B</td></tr> <tr><td>16.4-29.4</td><td>C</td></tr> <tr><td>29.4-50.7</td><td>D</td></tr> <tr><td>50.7-83.6</td><td>E</td></tr> <tr><td>83.6-145.1</td><td>F</td></tr> <tr><td>≥ 145.1</td><td>G</td></tr> </table>	< 8.5	A	8.5-16.4	B	16.4-29.4	C	29.4-50.7	D	50.7-83.6	E	83.6-145.1	F	≥ 145.1	G	22.3 D
< 23.8	A																														
23.8-45.1	B																														
45.1-76.2	C																														
76.2-122.1	D																														
122.1-229.6	E																														
229.6-268.6	F																														
≥ 268.6	G																														
< 8.5	A																														
8.5-16.4	B																														
16.4-29.4	C																														
29.4-50.7	D																														
50.7-83.6	E																														
83.6-145.1	F																														
≥ 145.1	G																														

CALIFICACIÓN ENERGÉTICA GLOBAL																															
CONSUMO DE ENERGÍA PRIMARIA NO RENOVABLE [kWh/m² año]		EMISIONES DE DIÓXIDO DE CARBONO [kgCO2/ m² año]																													
<table border="1"> <tr><td>< 23.8</td><td>A</td></tr> <tr><td>23.8-45.1</td><td>B</td></tr> <tr><td>45.1-76.2</td><td>C</td></tr> <tr><td>76.2-122.1</td><td>D</td></tr> <tr><td>122.1-229.6</td><td>E</td></tr> <tr><td>229.6-268.6</td><td>F</td></tr> <tr><td>≥ 268.6</td><td>G</td></tr> </table>	< 23.8	A	23.8-45.1	B	45.1-76.2	C	76.2-122.1	D	122.1-229.6	E	229.6-268.6	F	≥ 268.6	G	83.1 D	<table border="1"> <tr><td>< 5.5</td><td>A</td></tr> <tr><td>5.5-10.4</td><td>B</td></tr> <tr><td>10.4-17.5</td><td>C</td></tr> <tr><td>17.5-28.1</td><td>D</td></tr> <tr><td>28.1-54.3</td><td>E</td></tr> <tr><td>54.3-64.3</td><td>F</td></tr> <tr><td>≥ 64.3</td><td>G</td></tr> </table>	< 5.5	A	5.5-10.4	B	10.4-17.5	C	17.5-28.1	D	28.1-54.3	E	54.3-64.3	F	≥ 64.3	G	16.5 C
< 23.8	A																														
23.8-45.1	B																														
45.1-76.2	C																														
76.2-122.1	D																														
122.1-229.6	E																														
229.6-268.6	F																														
≥ 268.6	G																														
< 5.5	A																														
5.5-10.4	B																														
10.4-17.5	C																														
17.5-28.1	D																														
28.1-54.3	E																														
54.3-64.3	F																														
≥ 64.3	G																														

CONSUMO DE ENERGÍA PRIMARIA NO RENOVABLE [kWh/m² año]		EMISIONES DE DIÓXIDO DE CARBONO [kgCO2/ m² año]																													
<table border="1"> <tr><td>< 23.8</td><td>A</td></tr> <tr><td>23.8-45.1</td><td>B</td></tr> <tr><td>45.1-76.2</td><td>C</td></tr> <tr><td>76.2-122.1</td><td>D</td></tr> <tr><td>122.1-229.6</td><td>E</td></tr> <tr><td>229.6-268.6</td><td>F</td></tr> <tr><td>≥ 268.6</td><td>G</td></tr> </table>	< 23.8	A	23.8-45.1	B	45.1-76.2	C	76.2-122.1	D	122.1-229.6	E	229.6-268.6	F	≥ 268.6	G	79.3 D	<table border="1"> <tr><td>< 5.5</td><td>A</td></tr> <tr><td>5.5-10.4</td><td>B</td></tr> <tr><td>10.4-17.5</td><td>C</td></tr> <tr><td>17.5-28.1</td><td>D</td></tr> <tr><td>28.1-54.3</td><td>E</td></tr> <tr><td>54.3-64.3</td><td>F</td></tr> <tr><td>≥ 64.3</td><td>G</td></tr> </table>	< 5.5	A	5.5-10.4	B	10.4-17.5	C	17.5-28.1	D	28.1-54.3	E	54.3-64.3	F	≥ 64.3	G	15.6 C
< 23.8	A																														
23.8-45.1	B																														
45.1-76.2	C																														
76.2-122.1	D																														
122.1-229.6	E																														
229.6-268.6	F																														
≥ 268.6	G																														
< 5.5	A																														
5.5-10.4	B																														
10.4-17.5	C																														
17.5-28.1	D																														
28.1-54.3	E																														
54.3-64.3	F																														
≥ 64.3	G																														

CALIFICACIONES ENERGÉTICAS PARCIALES																															
DEMANDA DE CALEFACCIÓN [kWh/m² año]		DEMANDA DE REFRIGERACIÓN [kWh/m² año]																													
<table border="1"> <tr><td>< 9.7</td><td>A</td></tr> <tr><td>9.7-18.4</td><td>B</td></tr> <tr><td>18.4-31.1</td><td>C</td></tr> <tr><td>31.1-49.9</td><td>D</td></tr> <tr><td>49.9-83.6</td><td>E</td></tr> <tr><td>83.6-102.8</td><td>F</td></tr> <tr><td>≥ 102.8</td><td>G</td></tr> </table>	< 9.7	A	9.7-18.4	B	18.4-31.1	C	31.1-49.9	D	49.9-83.6	E	83.6-102.8	F	≥ 102.8	G	53.7 E	<table border="1"> <tr><td>< 10.0</td><td>A</td></tr> <tr><td>10.0-14.3</td><td>B</td></tr> <tr><td>14.3-20.4</td><td>C</td></tr> <tr><td>20.4-29.7</td><td>D</td></tr> <tr><td>29.7-36.7</td><td>E</td></tr> <tr><td>36.7-45.1</td><td>F</td></tr> <tr><td>≥ 45.1</td><td>G</td></tr> </table>	< 10.0	A	10.0-14.3	B	14.3-20.4	C	20.4-29.7	D	29.7-36.7	E	36.7-45.1	F	≥ 45.1	G	24.5 D
< 9.7	A																														
9.7-18.4	B																														
18.4-31.1	C																														
31.1-49.9	D																														
49.9-83.6	E																														
83.6-102.8	F																														
≥ 102.8	G																														
< 10.0	A																														
10.0-14.3	B																														
14.3-20.4	C																														
20.4-29.7	D																														
29.7-36.7	E																														
36.7-45.1	F																														
≥ 45.1	G																														

CALIFICACIONES ENERGÉTICAS PARCIALES																															
DEMANDA DE CALEFACCIÓN [kWh/m² año]		DEMANDA DE REFRIGERACIÓN [kWh/m² año]																													
<table border="1"> <tr><td>< 9.7</td><td>A</td></tr> <tr><td>9.7-18.4</td><td>B</td></tr> <tr><td>18.4-31.1</td><td>C</td></tr> <tr><td>31.1-49.9</td><td>D</td></tr> <tr><td>49.9-83.6</td><td>E</td></tr> <tr><td>83.6-102.8</td><td>F</td></tr> <tr><td>≥ 102.8</td><td>G</td></tr> </table>	< 9.7	A	9.7-18.4	B	18.4-31.1	C	31.1-49.9	D	49.9-83.6	E	83.6-102.8	F	≥ 102.8	G	30.3 C	<table border="1"> <tr><td>< 10.0</td><td>A</td></tr> <tr><td>10.0-14.3</td><td>B</td></tr> <tr><td>14.3-20.4</td><td>C</td></tr> <tr><td>20.4-29.7</td><td>D</td></tr> <tr><td>29.7-36.7</td><td>E</td></tr> <tr><td>36.7-45.1</td><td>F</td></tr> <tr><td>≥ 45.1</td><td>G</td></tr> </table>	< 10.0	A	10.0-14.3	B	14.3-20.4	C	20.4-29.7	D	29.7-36.7	E	36.7-45.1	F	≥ 45.1	G	27.7 D
< 9.7	A																														
9.7-18.4	B																														
18.4-31.1	C																														
31.1-49.9	D																														
49.9-83.6	E																														
83.6-102.8	F																														
≥ 102.8	G																														
< 10.0	A																														
10.0-14.3	B																														
14.3-20.4	C																														
20.4-29.7	D																														
29.7-36.7	E																														
36.7-45.1	F																														
≥ 45.1	G																														

CALIFICACIONES ENERGÉTICAS PARCIALES																															
DEMANDA DE CALEFACCIÓN [kWh/m² año]		DEMANDA DE REFRIGERACIÓN [kWh/m² año]																													
<table border="1"> <tr><td>< 9.7</td><td>A</td></tr> <tr><td>9.7-18.4</td><td>B</td></tr> <tr><td>18.4-31.1</td><td>C</td></tr> <tr><td>31.1-49.9</td><td>D</td></tr> <tr><td>49.9-83.6</td><td>E</td></tr> <tr><td>83.6-102.8</td><td>F</td></tr> <tr><td>≥ 102.8</td><td>G</td></tr> </table>	< 9.7	A	9.7-18.4	B	18.4-31.1	C	31.1-49.9	D	49.9-83.6	E	83.6-102.8	F	≥ 102.8	G	27.0 C	<table border="1"> <tr><td>< 10.0</td><td>A</td></tr> <tr><td>10.0-14.3</td><td>B</td></tr> <tr><td>14.3-20.4</td><td>C</td></tr> <tr><td>20.4-29.7</td><td>D</td></tr> <tr><td>29.7-36.7</td><td>E</td></tr> <tr><td>36.7-45.1</td><td>F</td></tr> <tr><td>≥ 45.1</td><td>G</td></tr> </table>	< 10.0	A	10.0-14.3	B	14.3-20.4	C	20.4-29.7	D	29.7-36.7	E	36.7-45.1	F	≥ 45.1	G	28.2 D
< 9.7	A																														
9.7-18.4	B																														
18.4-31.1	C																														
31.1-49.9	D																														
49.9-83.6	E																														
83.6-102.8	F																														
≥ 102.8	G																														
< 10.0	A																														
10.0-14.3	B																														
14.3-20.4	C																														
20.4-29.7	D																														
29.7-36.7	E																														
36.7-45.1	F																														
≥ 45.1	G																														