

ALTOBA TOTAL

4'53

4'52x26x17'4

332

ALTOBA HASTA

FORJADO - 403

ALTOBA SOBRE

FORJADO - 423

12

7

220

15

5

18

1

20

320

25

26

27



92

225

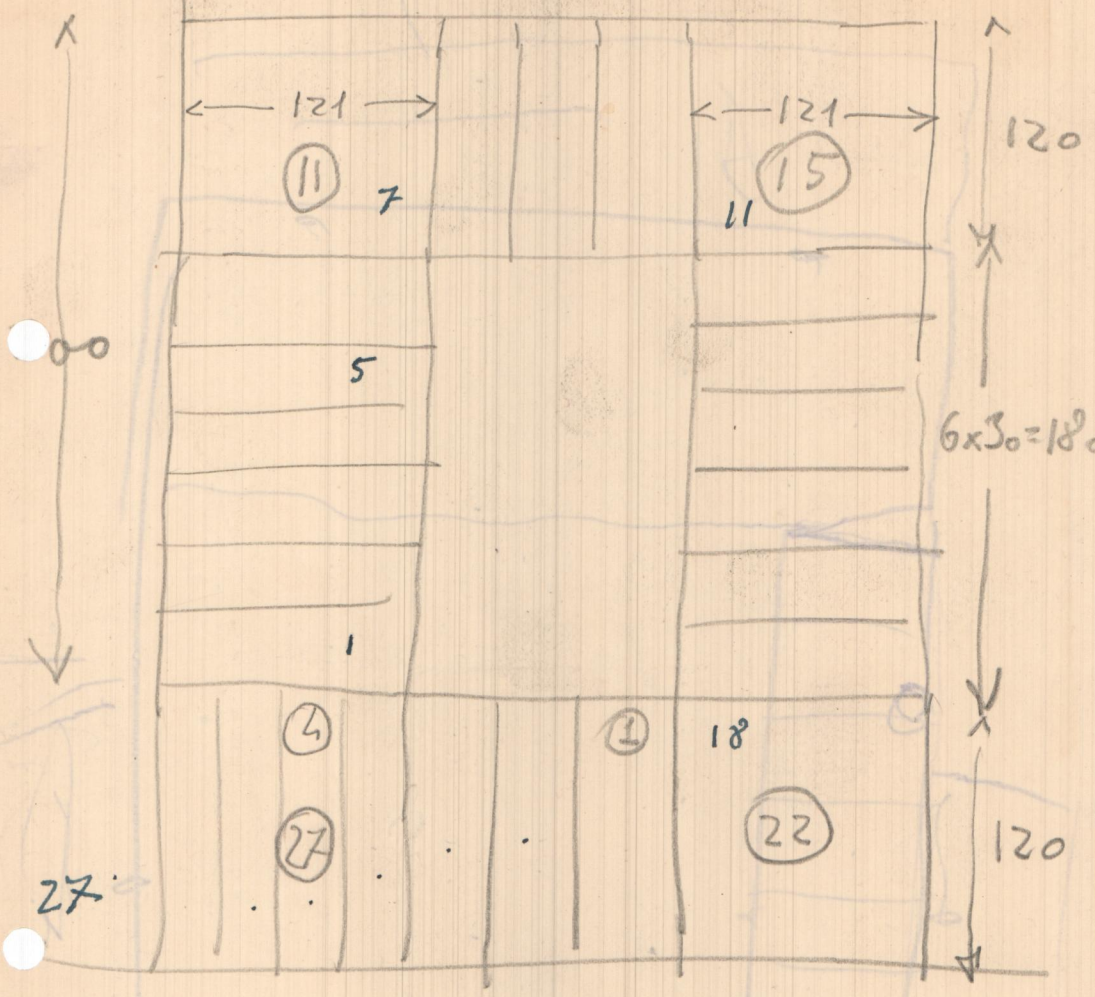
137

17'5
 12
 2500
 175 M
 200

Handwritten signature

← 332 →

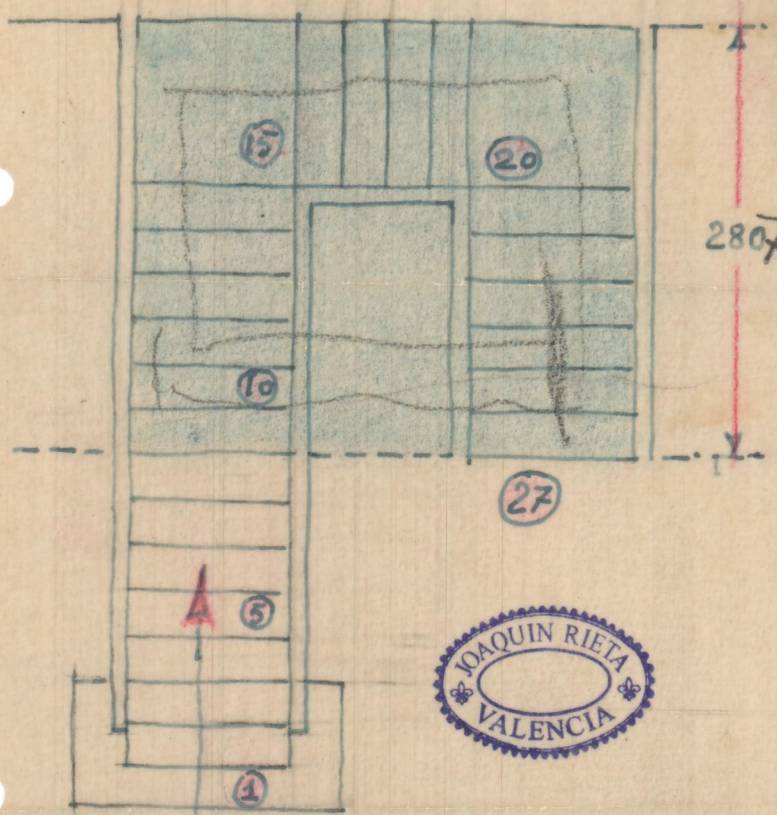
← $3 \times 30 = 90$ →



±.-1:50

K-----332-----X

Y
2807
Y



A TERRAZA

A SOTANO

