



El trafo fideles de un p...

6670

1540

1155

200

Jardi escul...

EDIFICIO RIVELA

Jardi escul...

2740

Jardi escul...

1370

± 11200

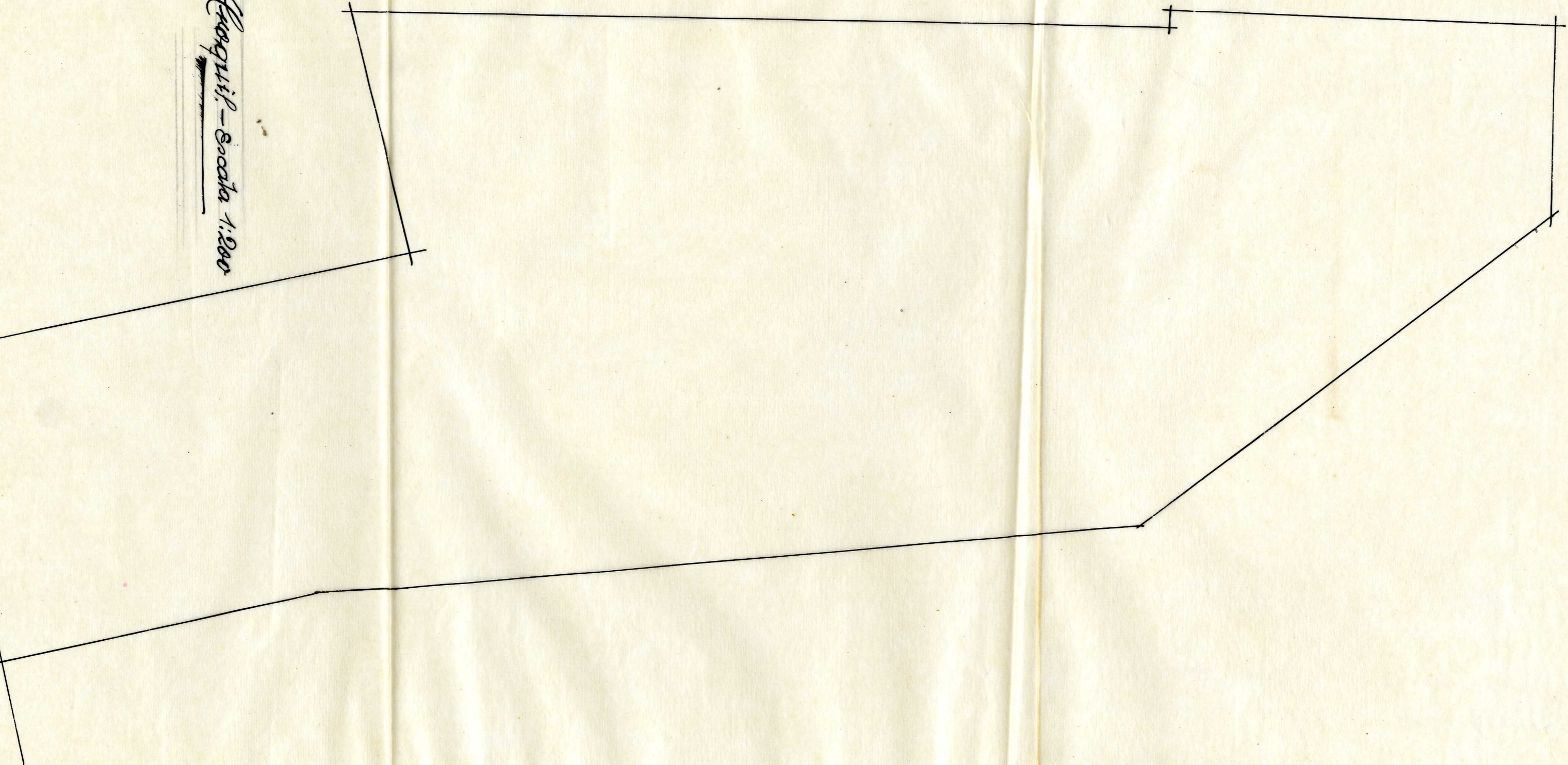


soluc

Morro
Civils Aduanos 15
20 Septe 1946



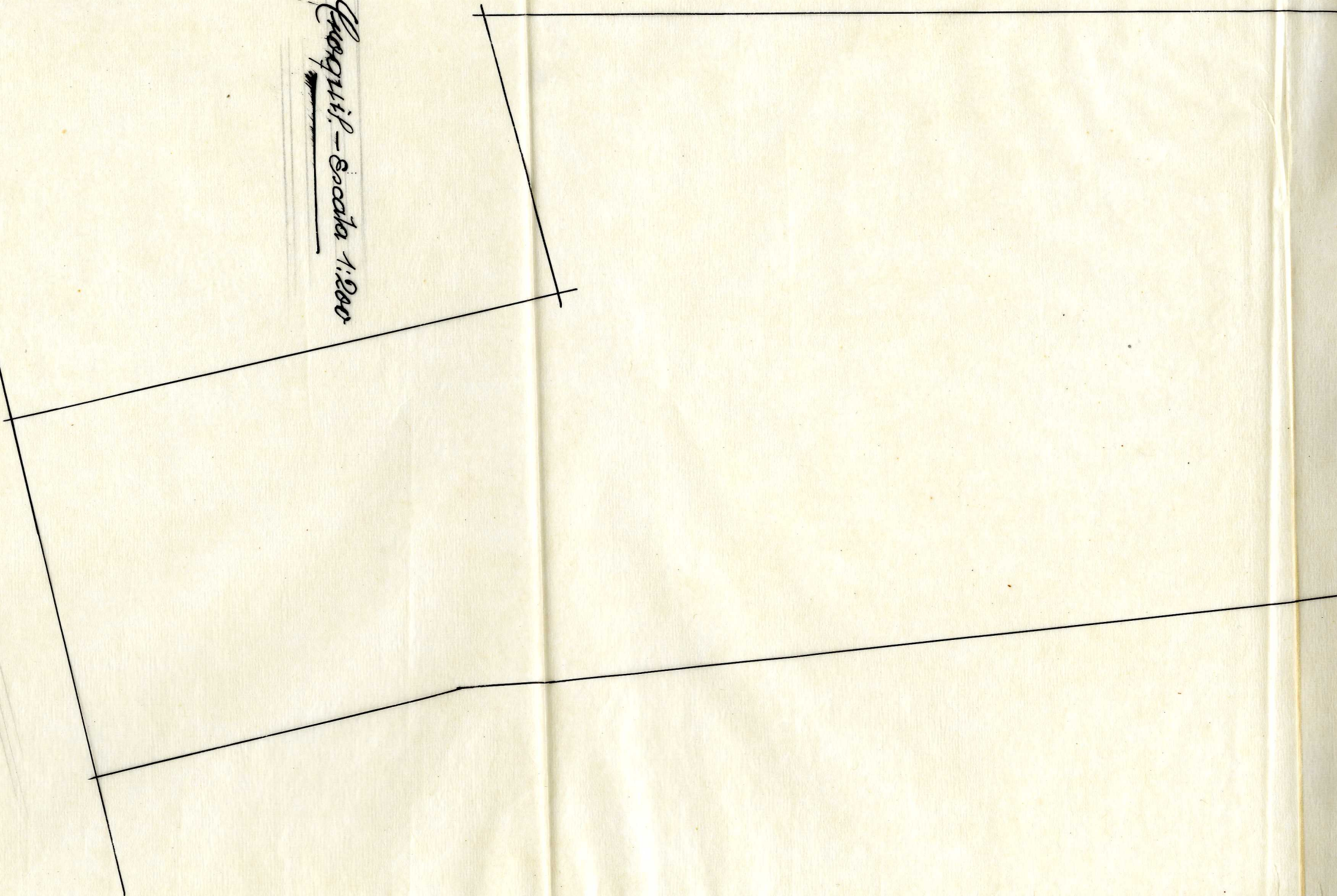
Salida por un edificio
de la Q de Guilo Amoros



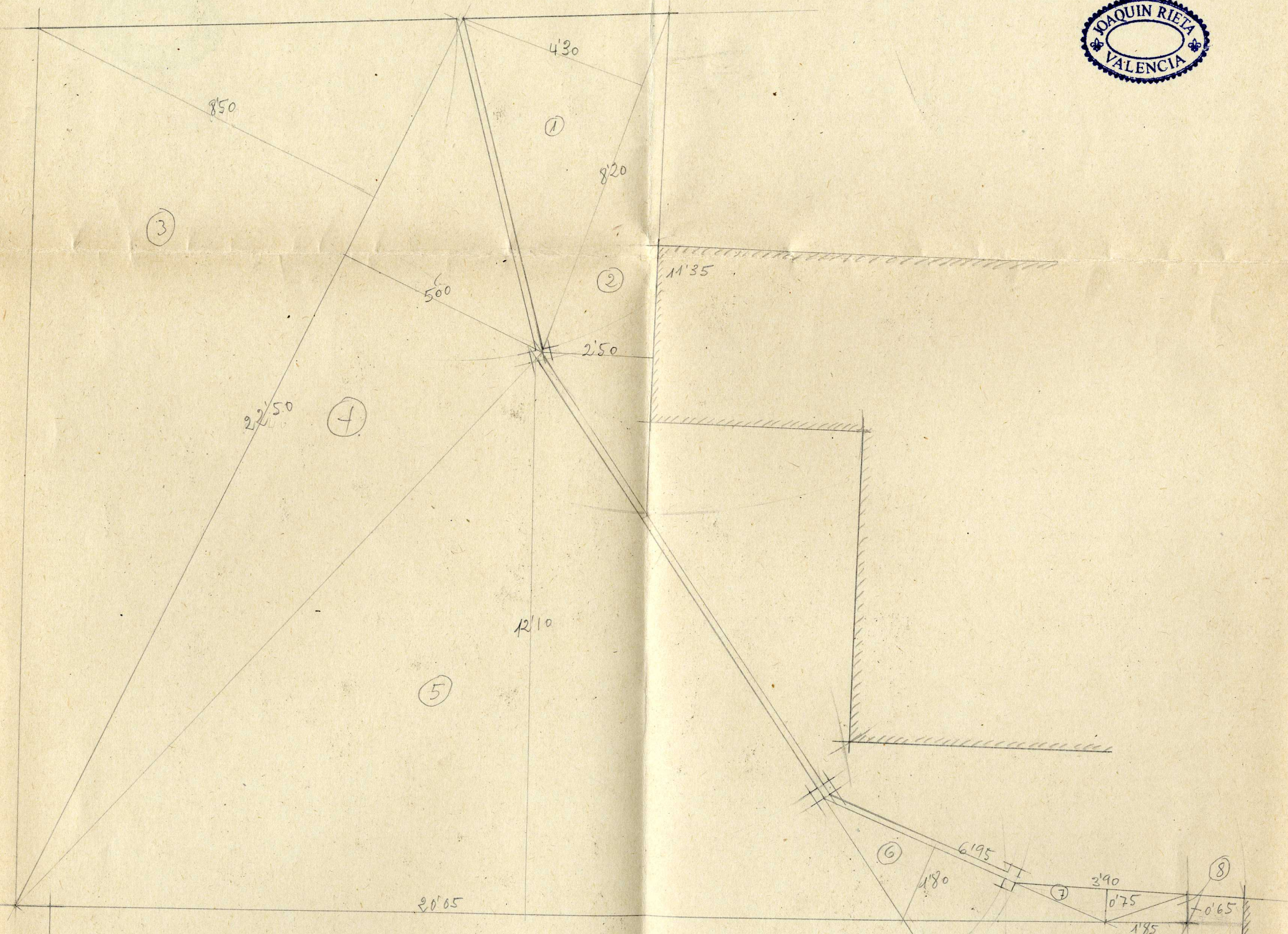
Escalera - Escala 1:200

Eragnis - Sacata 1:200

patte de colibri

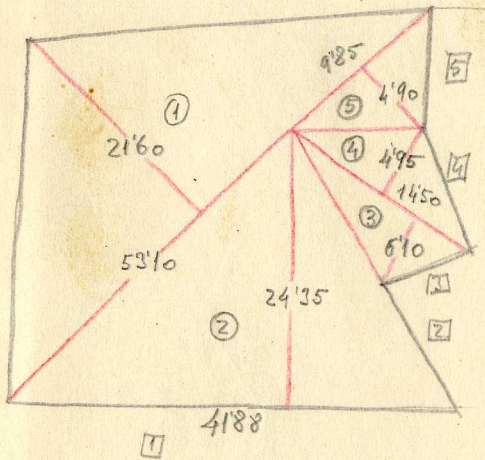


Corra



1.	$8'20 \times 4'30 =$	17'63	m ²
2.	$11'35 \times 2'50 =$	14'16	"
3.	$22'50 \times 8'50 =$	95'62	"
4.	$22'50 \times 5'00 =$	56'25	"
5.	$20'05 \times 12'10 =$	124'02	"
6.	$6'95 \times 1'80 =$	6'25	"
7.	$3'90 \times 0'75 =$	1'46	"
8.	$1'85 \times 0'65 =$	0'60	"

1:100



$$\begin{aligned}
 ① &= \frac{1}{2} 53'10 \times 21'60 = 573'48 \text{ m}^2 \\
 ② &= \frac{1}{2} 41'88 \times 24'35 = 509'88 \text{ " } \\
 ③ &= \frac{1}{2} 14'50 \times 6'10 = 44'22 \text{ " } \\
 ④ &= \frac{1}{2} 14'50 \times 4'95 = 35'88 \text{ " } \\
 ⑤ &= \frac{1}{2} 9'85 \times 4'90 = 43'83 \text{ " } \\
 \hline
 &1207'29 \text{ m}^2
 \end{aligned}$$

Medianes

$$\begin{aligned}
 ① &= 41'88 \text{ m. l.} \\
 ② &= 12'73 \text{ " } \\
 ③ &= 2'12 \text{ " } \\
 ④ &= 9'90 \text{ " } \\
 ⑤ &= 6'45 \text{ " }
 \end{aligned}$$

$$78'08 \times 0'20 = 15'61 \text{ m}^2$$

$$\begin{aligned}
 \text{libre} &- 1207'29 \text{ m}^2 \\
 \text{mediang} &- 15'61 \text{ " } \\
 \hline
 &1222'90 \text{ m}^2
 \end{aligned}$$