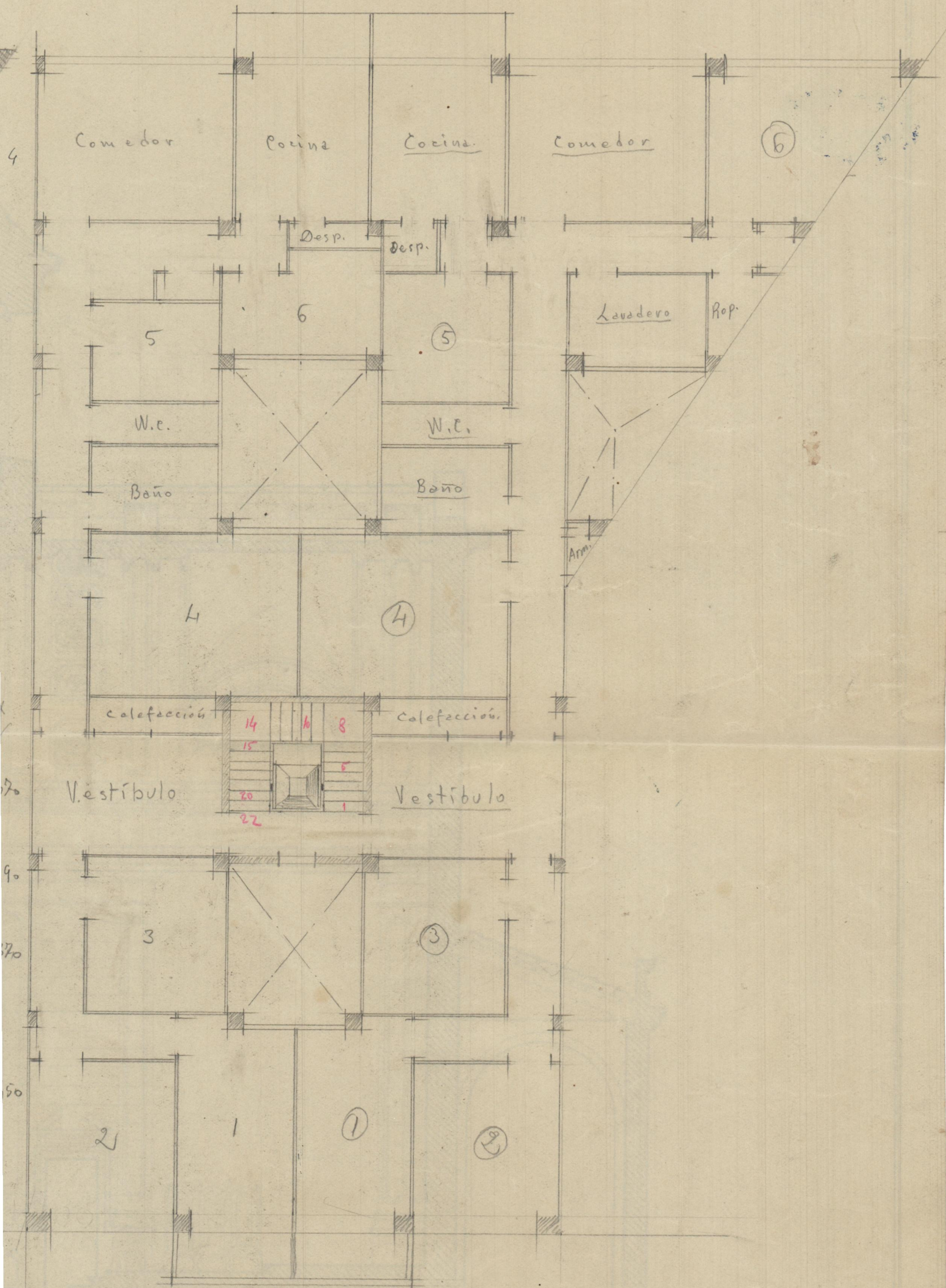


← 6 dors. → ← 6 (7) dors. →

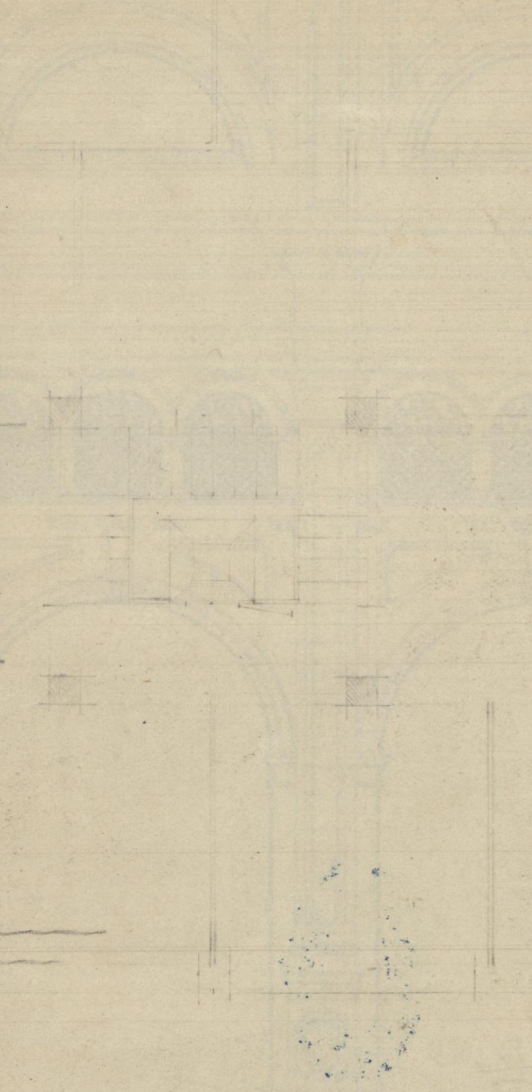
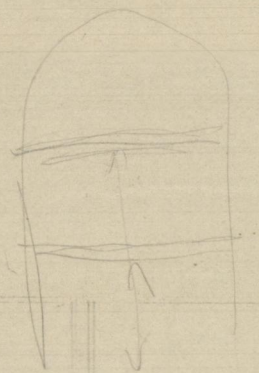
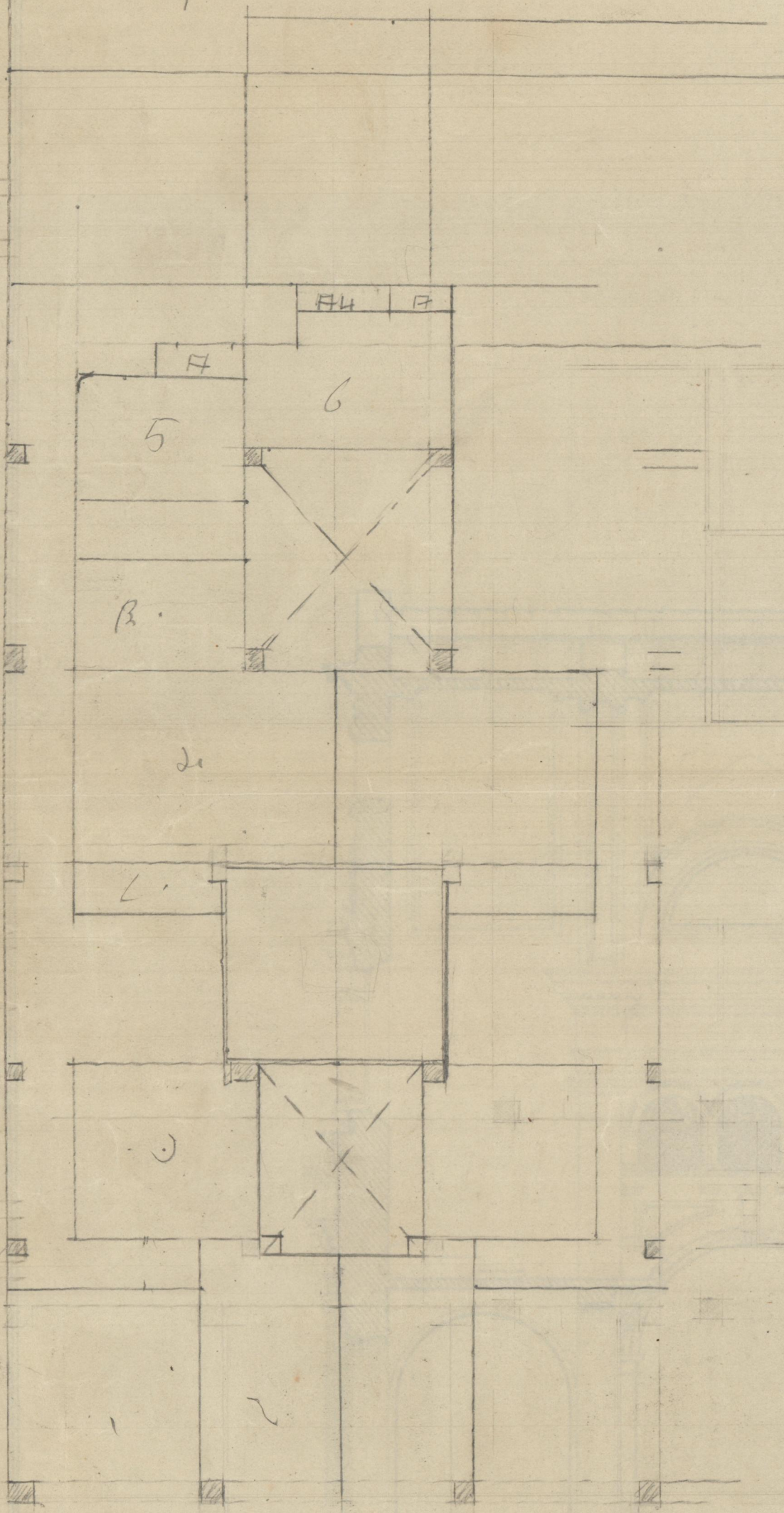
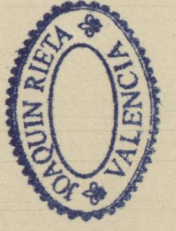


No se señalan los muebles, por ser la misma distribución de ellos que en la otra planta.



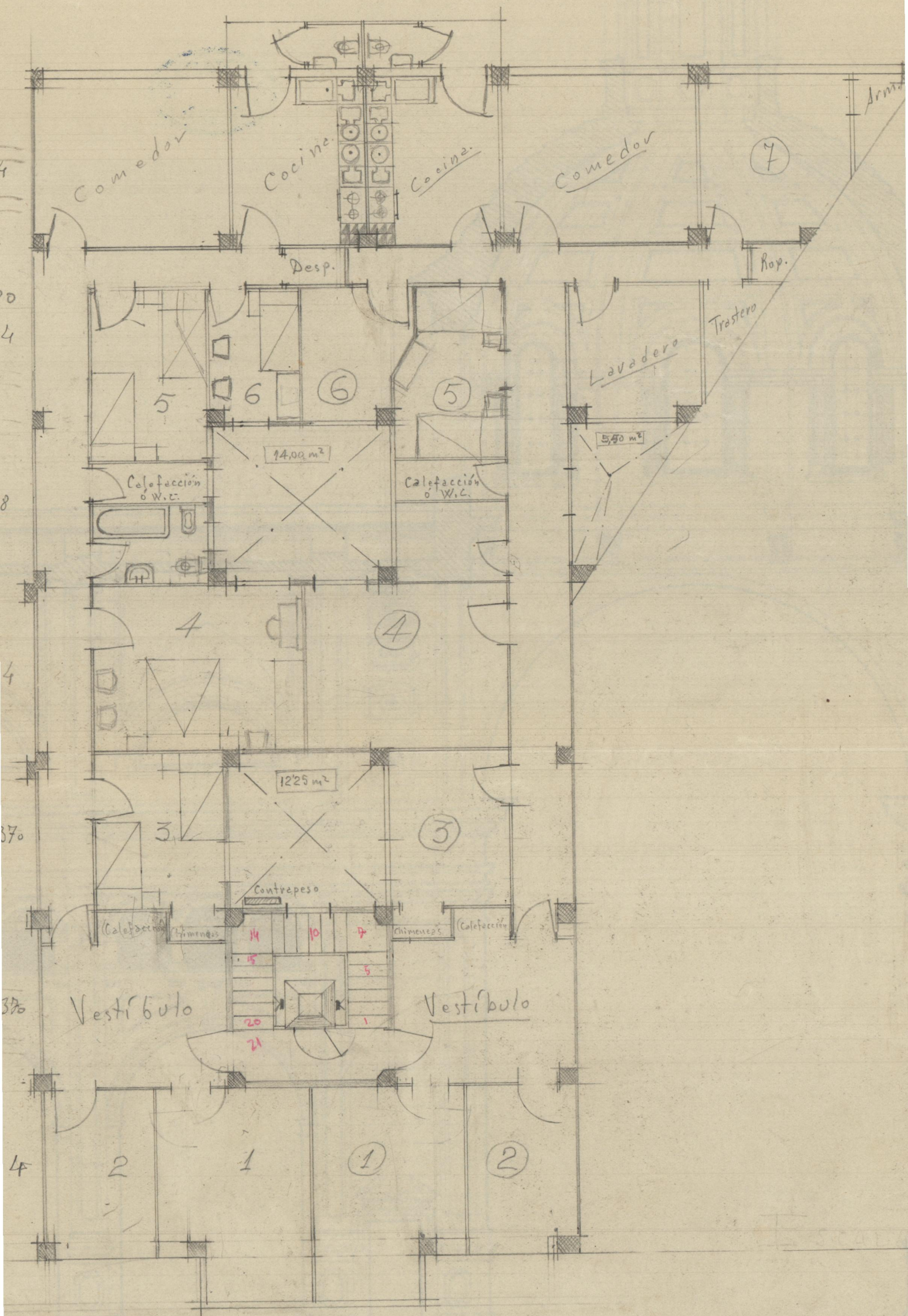
11'90
 11'80
 23'70
 280
 26'50

SECC



6 dors.

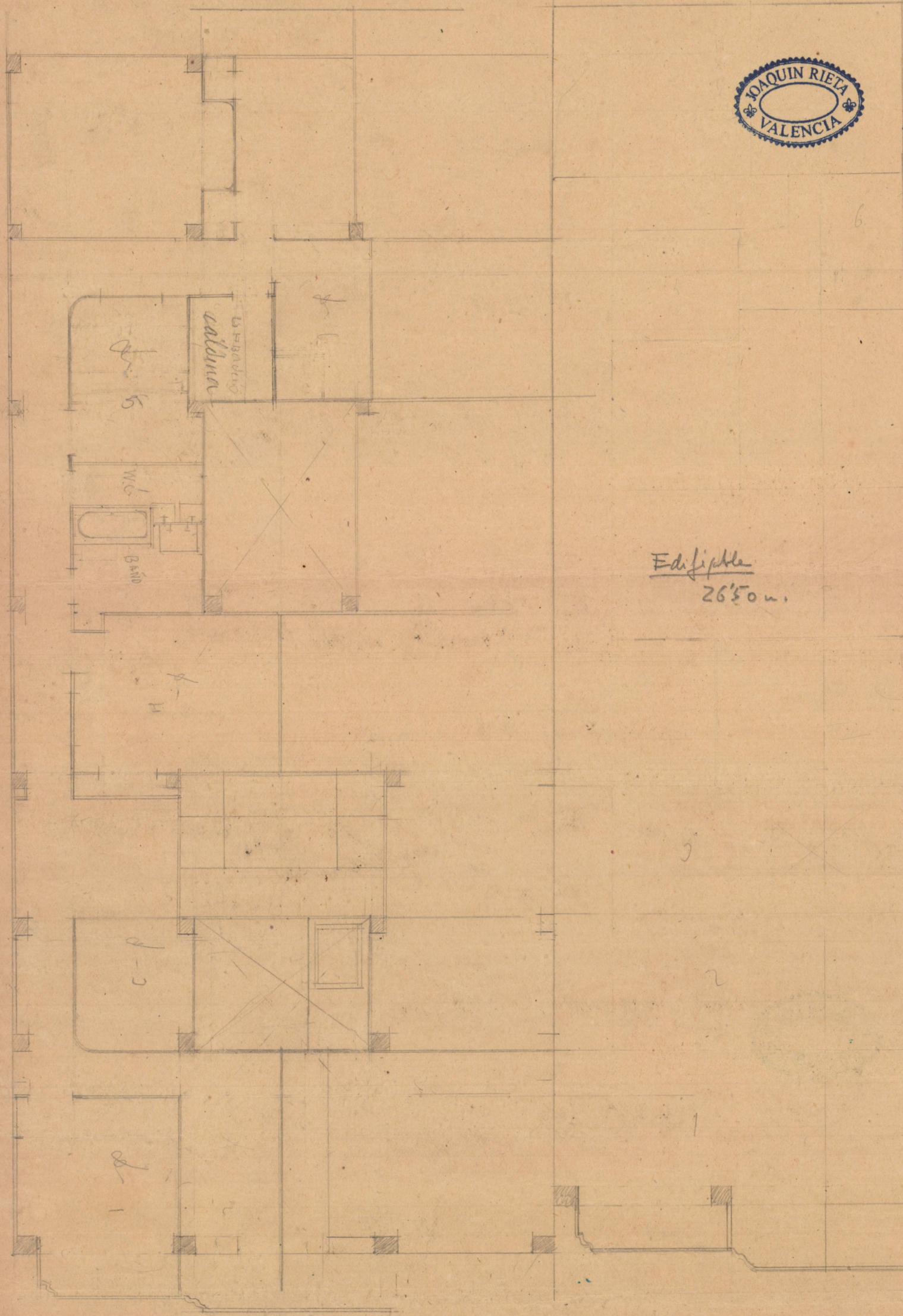
7 (8) dors.



ESCALA 1/100



6



calderina

5

W.C.

BANO

3-9

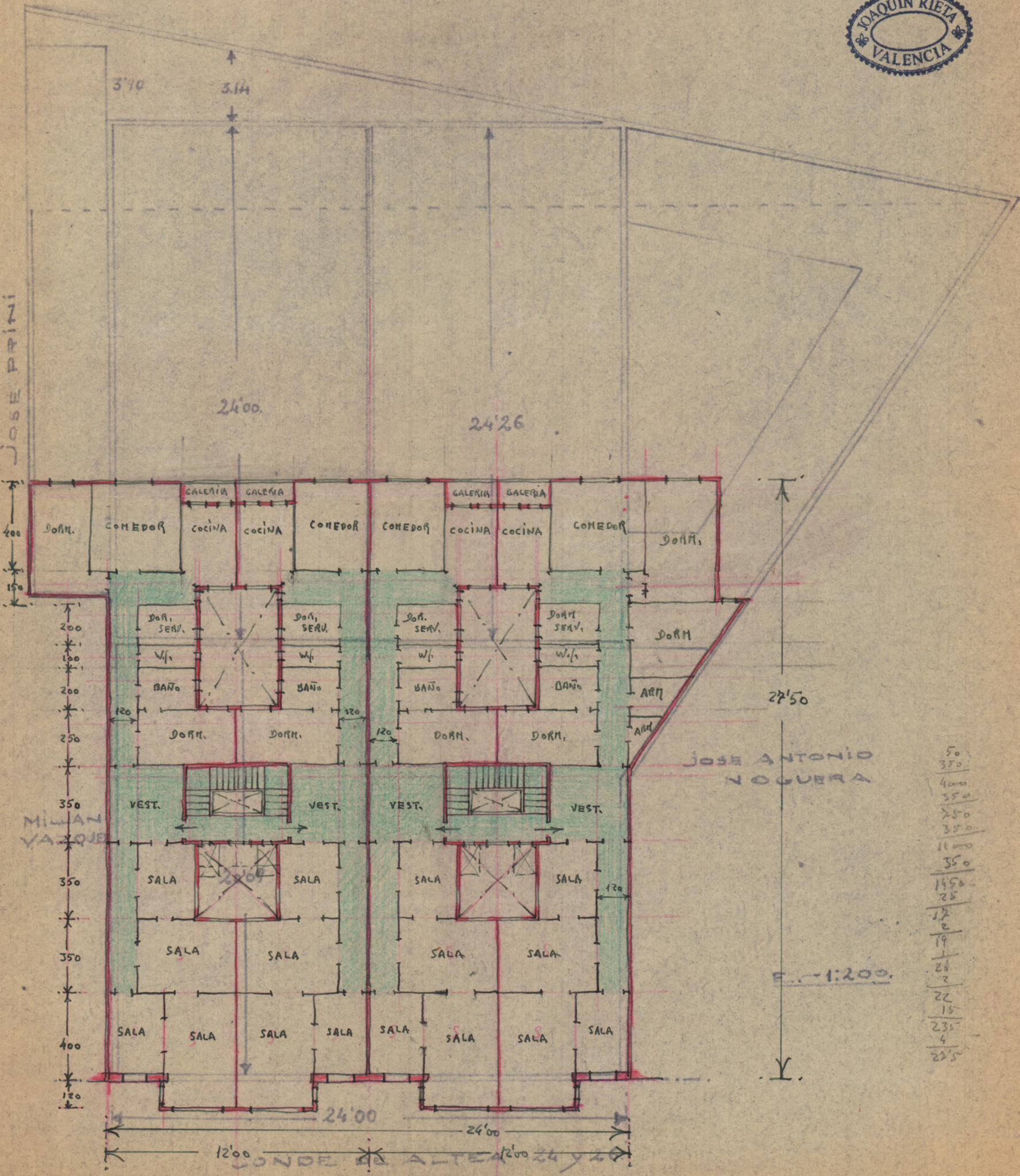
1

Edificable
26'50 m.

3

2

1



- 271000

MILAN
VALENCIA

JOSE ANTONIO
VOGUERA

50
370
400
350
250
350
1100
350
1450
25
12
2
19
1
20
2
22
15
235
4
235

E.-1:200.

CONDE DE ALTEA