

Document downloaded from:

<http://hdl.handle.net/10251/73637>

This paper must be cited as:

Girard, CDP.; Rinaudo, J.; Pulido-Velazquez, M.; Caballero, Y. (2015). An interdisciplinary modelling framework for selecting adaptation measures at the river basin scale in a global change scenario. *Environmental Modelling and Software*. 69:42-54.  
doi:10.1016/j.envsoft.2015.02.023.



The final publication is available at

<http://dx.doi.org/10.1016/j.envsoft.2015.02.023>

Copyright Elsevier

Additional Information

# An interdisciplinary modelling framework for selecting adaptation measures at the river basin scale in a global change scenario

Corentin GIRARD<sup>a</sup>, Jean-Daniel RINAUDO<sup>b</sup>, Manuel PULIDO-VELAZQUEZ<sup>c</sup> and Yvan CABALLERO<sup>d</sup>

<sup>a</sup>Research Institute of Water and Environmental Engineering (IIAMA), Universitat Politècnica de València, Camino de Vera s/n, Valencia, 46022 Spain. [cogimar@upv.es](mailto:cogimar@upv.es) (*Corresponding author*)

<sup>b</sup>BRGM, French Geological Survey, Montpellier, France, 1039 rue de Pinville 34000 Montpellier. [jd.rinaudo@brgm.fr](mailto:jd.rinaudo@brgm.fr)

<sup>c</sup>Research Institute of Water and Environmental Engineering (IIAMA), Universitat Politècnica de València, Camino de Vera s/n, Valencia, 46022 Spain. [mapuve@hma.upv.es](mailto:mapuve@hma.upv.es)

<sup>d</sup>BRGM, French Geological Survey, Montpellier, France, 1039 rue de Pinville 34000 Montpellier. [y.caballero@brgm.fr](mailto:y.caballero@brgm.fr)

## Highlights:

- An interdisciplinary modelling framework is presented to analyse the effects of global change on water resource systems at the basin scale.
- Present and future urban and agricultural water demands, as well as climate change scenario, are integrated into a river basin management model.
- Future supply and demand management measures are selected using least-cost optimisation.
- Trade-offs between the cost of adaptation measures, irrigated agriculture development, and environmental requirements are quantified.
- Insights to improved integrated water management at basin scale through interdisciplinary modelling are provided.

**Abstract:** Shaping global change adaptation strategy in water resource systems requires an interdisciplinary approach to deal with the multiple dimensions of the problem. The modelling framework presented integrates climate, economic, agronomic and hydrological scenarios to design a programme of adaptation measures at the river basin scale. Future demand scenarios, combined with a down-scaled climate scenario, provide the basis to estimate the demand and water resources in 2030. A least-cost river basin optimisation model is then applied to select adaptation measures ensuring that environmental and supply management goals are achieved. In the Orb river basin (France), the least-cost portfolio selected suggests mixing demand and supply side measures to adapt to global change. Trade-offs among the cost of the programme of measures, the deficit in agricultural water supply and the level of environmental flows are investigated. The challenges to implement such interdisciplinary approaches in the definition of adaptation strategies are finally discussed.

**Keywords:** global change; adaptation; integrated river basin modelling; programme of measures; interdisciplinary; least-cost optimisation.

# 1. Introduction

Over the past decade, river basin agencies and stakeholders have been confronted with changing environmental, economic and societal conditions. Climatic conditions are evolving in many regions of the world, leading to increased water scarcity and risk of drought (Arnell, 2004). Climate change and the increased demand for food production lead to an extension and intensification of irrigated agriculture. Urban water use also increases due to the concentration of population in cities and the emergence of new consumption patterns (Hunt and Watkiss, 2011), particularly in the Mediterranean Basin (Thivet and Fernandez, 2012). These trends result in increasing pressure on surface and groundwater resources and dependent ecosystems. Concomitantly, societies have rising expectations in terms of environmental protection. This has materialized in many legislative frameworks, such as the EU Water Framework Directive aiming at achieving the good status of European water bodies (EU, 2000) and, more recently, the EU communication (Blueprint) to Safeguard Europe's Waters (EC, 2012) that identifies directions to achieve the good status, highlighting the interest of water efficiency measures among others.

Water planners need to anticipate how to adapt management practices and infrastructure development for some future state of their water resource systems. This requires that they develop a systemic approach depicting the natural and socio-economic factors and processes that determine future dynamics of river basins. The factors and interaction processes can be formally represented through the development of integrated river basin management models (Jakeman and Letcher, 2003; Letcher *et al.*, 2007), which can be used either to learn about the impact of alternative water management strategies or to identify optimal strategies under future climate, demand and regulatory scenarios.

Developing such integrated models to estimate future changes and frame adaptation plans is not, however, a trivial task. It requires integrating concepts, methods and modelling tools from various domains of expertise and scientific disciplines. For instance, forecasting future urban water demand (Baumann *et al.*, 1997) might require the participation of demographers (population growth forecasts), urban planners (housing stock and characteristics), economists (impacts of changing tariffs, changes in economic activities) and engineers (water supply and water saving options). Similarly, forecasts of future change of agricultural irrigation water demand should be informed by an economic analysis of future agricultural and international trade policies (economics and political science); by a technical assessment of innovations likely to emerge in terms of crop varieties, cropping practices and irrigation techniques (engineering sciences); by modelling crop water requirements (agronomy) under changing climatic conditions (Rinaudo *et al.*, 2013a); and by a stakeholder analysis (sociology) to infer the objectives, priorities, expectations, behaviour and needs of the different agricultural stakeholders.

Modelling complexity also comes from the imperative to support decision making in a context where heterogeneous stakeholders participate in the search for a negotiated solution, moved by different interests and multiple objectives. Involving the stakeholders in the development of the model or some

1  
2  
3  
4 of its components theoretically ensures a better understanding of the underlying assumptions, thereby  
5 increasing its acceptability and credibility. However, the complexity of models, and the associated  
6 uncertainty, can be such that it stretches the understanding capacity of many stakeholders. A common  
7 issue among all the modelling tools and methods developed to address water management issues is  
8 indeed the one of uncertainty and its propagation that challenges the capacity of scientists to accurately  
9 represent the reality and provide reliable information about the future (Refsgaard *et al.*, 2007).

10 Sustainable management of water resources and dependent ecosystems requires an understanding of  
11 climate change impacts on river flows (Caballero, *et al.* 2007) and groundwater levels (hydrology and  
12 hydrogeology), and on the aquatic environment (hydro-ecology). Last but not least, a cross-  
13 fertilization of engineering, economics and other sciences is needed to define complex adaptation  
14 strategies that involve new combinations of water demand management measures (*e.g.* water  
15 conservation measures), infrastructure operation (*e.g.* management of reservoir or irrigation systems)  
16 and development of new capacity (*e.g.* groundwater exploitation or desalination projects). Therefore,  
17 we would expect an interdisciplinary modelling approach to provide the most relevant insights to  
18 water managers and policy makers. Combined with the participatory process, interdisciplinary  
19 modelling can help to develop a shared understanding of the water problems as a foundation for  
20 negotiated management and policy solutions (Heinz *et al.*, 2007). Indeed, the integration of knowledge  
21 from different disciplines beyond their respective paradigms and the interconnection of mon-  
22 disciplinary intellectual silos has been highlighted as one of the salient dimensions for the success of  
23 integrated modelling approaches (Hamilton, *et al.* 2015).

24 Pioneering efforts to develop an interdisciplinary approach addressing water planning issues date back  
25 to the Harvard Water Program in the late 1950s, when economics, social sciences and engineering  
26 were first brought in to support water policy making. Nowadays, such initiatives have become even  
27 more necessary due to the growing complexity of water management issues (Reuss, 2003). River basin  
28 management models – often coupled with Decision Support Systems tools – have been developed at  
29 basin scale to assess the performance of water resource systems under different scenarios and policy  
30 strategies (Andreu *et al.*, 1996; Labadie, 2004). More recently, hydro-economic models (HEM; Harou  
31 *et al.*, 2009) took one step further into interdisciplinary modelling by integrating economics and water  
32 resources management into a coherent framework. At basin scale, HEMs have been applied to assess  
33 the marginal economic value of storage and environmental flows and so provide economic indicators  
34 and instruments, as required by the EU WFD (Pulido-Velazquez *et al.*, 2008 and 2013; Riegels *et al.*,  
35 2013). In Europe, they are expected to assist in recommending measures for the next round of EU  
36 water policy (De Roo *et al.*, 2012). In the United-States, HEMs have been applied to analyse the  
37 adaptation of inter-tied water supply system to global change in California (Tanaka *et al.*, 2006;  
38 Medellin-Azuara, *et al.*, 2008) and New Mexico (Hurd and Coonrod, 2012). Various research  
39 initiatives have been launched to integrate the impact of climate change, from an interdisciplinary  
40 perspective, into the implementation process of the WFD (Quevauvillier *et al.*, 2012; Pouget *et al.*,

1  
2  
3  
4 2013). However, despite a few pioneering studies, the vast majority of existing studies stop short at the  
5 impact assessment stage, which means they provide only a limited contribution to the question of  
6 adaptation (Wilby and Dessai, 2010).  
7

8  
9 In the literature, the issue of selecting measures for the planning of water resources has been long  
10 addressed as the problem of capacity expansion optimization (planning and scheduling of  
11 infrastructure over time) through least-cost optimization models (O'Laoghaire 1974, Loucks et al.  
12 1981; Ejeta and Mays, 2004, Mastrosov et al. 2013). From this perspective, the part of the framework  
13 presented dedicated to the selection of measures could be seen as a least-cost planning model without  
14 option scheduling. Indeed, we consider that the main focus of the work is located one step before the  
15 scheduling in the planning process. The framework presented clearly deals with the definition of the  
16 planning scenarios (demand and hydrological) and objectives (environmental flows, agricultural  
17 development) before the phasing of the investment. The added value of the contribution lies in the  
18 combination of different modelling disciplines to define the climate and demand change scenario, and  
19 then assess trade-offs between the cost of the programme of measures and other planning objectives at  
20 the river basin scale.  
21

22  
23 This paper presents an interdisciplinary modelling framework to select adaptation measures at river-  
24 basin scale in a global change scenario. The method is tested on the Orb river basin, a Mediterranean  
25 basin in Southern France, where global change is expected to exacerbate the difficulties of meeting the  
26 growing water demands and the WFD environmental in-stream flow requirements. We describe first  
27 the general modelling framework that is used to generate future global change scenarios, to assess the  
28 impact of global change and to design the Programme of Measures (PoM) at basin scale; this is  
29 followed by a description of the demands and water resources modelling, and of the selection of  
30 adaptation measures through a Least-Cost River Basin Optimisation Model (LCRBOM). Next, we  
31 introduce the case study of the Orb basin, and describe the future socio-economic and environmental  
32 scenarios applied. One single scenario is selected to illustrate the application and potential of the  
33 framework. The results quantify future deficits in the supply of agricultural demand, and identify  
34 where adaptations to global change are required. Trade-offs between cost of the adaptation measures,  
35 agricultural deficits and environmental flow requirements are finally evaluated to highlight the  
36 potential of the interdisciplinary modelling framework to support water resources management. The  
37 final section presents the limitation of the models and discusses potential future developments, with  
38 feedback on the interdisciplinary process.  
39  
40  
41  
42  
43  
44  
45  
46  
47  
48  
49  
50  
51  
52

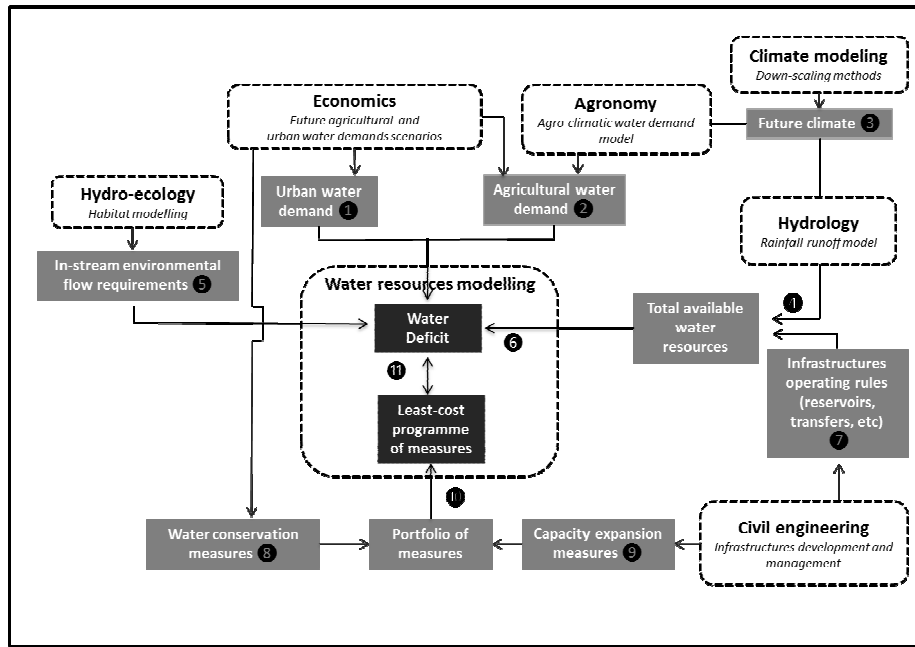
## 53 **2. Material and methods**

### 54 **2.1. Interdisciplinary modelling framework**

55  
56  
57  
58  
59 Because the interdisciplinary modelling framework presented in this paper is aimed at planning, the  
60 first challenge consists of identifying the main variables that determine the future of the system and,  
61  
62  
63  
64  
65

1  
2  
3  
4 and then in mobilizing and coordinating the corresponding disciplines able to model the processes  
5 impacting these variables. Figure 1 depicts the interdisciplinary modelling framework we adopted and  
6 the variables chosen for our case study – a catchment that is fairly representative of those located on  
7 the northern rim of the Mediterranean basin. It shows that the water deficit—to be minimised in the  
8 future through adaptation measures – depends not only on climatic change but also on a range of  
9 socio-economic variables. This conceptual framework was used as a basis for combining different  
10 modelling approaches in a computer-based integrated river basin management model. While a number  
11 of relationships were formally represented using mathematical models, other relationships were  
12 assessed using more qualitative and participatory methods (eg. for building the agriculture demand  
13 scenario using participatory workshops).

14  
15 Water demand models were developed to integrate the most likely evolution of urban and agricultural  
16 water uses. The urban water demand model ① is based on an econometric model combined with a  
17 population and housing stock forecast model that is based on regional statistical data. The agricultural  
18 water demand model ② combines an agronomic model and scenario workshops involving  
19 stakeholders. Climate change impact on local temperatures, evapotranspiration and precipitation is  
20 determined using downscaled results from a General Circulation Model (GCM) ③. The consequences  
21 of climate change on agricultural water requirements are taken into account based on the previous  
22 agronomic model, while its consequences on natural river flow regimes are considered using  
23 hydrological simulation models ④. Minimum in-stream flow requirements were derived from existing  
24 estimates using a hydraulic habitat model complemented by local expertise ⑤. The water resources  
25 system is conceptualized as a flow network of nodes and links ⑥. The most important surface  
26 reservoirs are included as storage nodes ⑦, and the inter-basin water transfers as network links.  
27 Reservoir releases and the volume of water to be supplied are defined through an optimisation  
28 procedure for a particular time horizon and spatial network. A catalogue of adaptation measures was  
29 identified based on stakeholders' workshops ⑧ and engineering studies ⑨. These measures were  
30 characterized in terms of effectiveness (defined as a volume of water) and cost (defined as an  
31 annualized investment with operating costs) ⑩. Finally, the least-cost river basin optimisation model  
32 ⑪ identifies the optimal portfolio of adaptation measures to minimise the agricultural deficit at  
33 minimum cost. Further details are provided on the major components of this interdisciplinary  
34 modelling framework in the following sections.  
35  
36  
37  
38  
39  
40  
41  
42  
43  
44  
45  
46  
47  
48  
49  
50  
51  
52  
53  
54  
55  
56  
57  
58  
59  
60  
61  
62  
63  
64  
65



**Figure 1: Interdisciplinary modelling framework to assess global change impacts and frame adaptation at river basin scale**

## 2.2. Demand scenarios

### 2.2.1. Urban demand scenario

The urban water demand forecasting model ① combines an econometric model, which predicts *per capita* water consumption (Rinaudo *et al.*, 2012) with a population and property forecast model based on regional statistical data (Vernier and Rinaudo, 2012). The econometric model allows simulation of the impact of changes in the socioeconomic variables (water tariffs, income). It calculates urban water demand for 2008 (Baseline) and 2030 (Future) planning horizons for all the municipalities (Urban Demand Unit, UDU) that abstract water from the water resources system. One key element of the method is the adjustment of the domestic demand ratio to different explanatory variables in each UDU: the price of water, average household income, climatic conditions, and the opportunity to drill their own well.

### 2.2.2. Agricultural demand scenario

The agricultural scenario was developed with the participation of stakeholders, following a method developed by Rinaudo *et al.*, (2013a). This method combines scenario workshops and modelling tools to assess future agricultural water demand in a three-step process. First, irrigated areas were estimated by crop and irrigation district (Agricultural Demand Unit, ADU) for a baseline year, according to the last general agricultural census in 2010. Then, a plausible future scenario was constructed for the

1  
2  
3  
4 planning horizon (2030) based on assumptions about how the main drivers of agricultural  
5 development will evolve at global (EU-Common Agricultural Policy, market prices, technical  
6 innovation, *etc.*) and local scale (land use policy, sector development). The assumptions were  
7 validated by semi-structured interviews and focus group discussions with local experts (Maton *et al.*,  
8 2012).  
9  
10

## 11 **2.3. Assessing climate change impact on demands and available resources**

### 12 **2.3.1. Climate change scenario**

13  
14  
15  
16  
17  
18 Future climate ③ was assessed using downscaled data from the GCM ARPEGE CNRM-CM3 (Salas-  
19 Melia *et al.*, 2005) forced by the A1B emission scenario, which is considered a median scenario  
20 amongst all possible future ones (Bates *et al.*, 2008). The downscaled scenario was provided as part of  
21 the SCRATCH 2010 experiment, based on a statistical “weather type” downscaling method (Pagé and  
22 Terray, 2010). The downscaled precipitation (P) and potential evapotranspiration (PET) time series are  
23 representative of the baseline (1971-2000) and the so-called ‘mid-term future period’ (2046-2065).  
24 They are provided at a daily time step, with a spatial resolution of 8 by 8 kilometres, identical to the  
25 scale of historical meteorological data used to drive water demand and hydrological models (Vidal *et*  
26 *al.*, 2010).  
27  
28  
29  
30  
31  
32

### 33 **2.3.2. Impact of climate change on agricultural demand**

34  
35  
36 It is expected that irrigation water requirements for agricultural crops in this area will be impacted by  
37 climate change. This impact was assessed using an agronomic model ② (Hoang *et al.*, 2012), adapted  
38 from Allen, *et al.* (1998). The model calculates Agricultural Water Demand (AWD) with a 10-day  
39 time step as the water required by the crop, in addition to rainfall, to compensate for  
40 evapotranspiration, taking available soil moisture into account. Inter-annual monthly average demands  
41 are estimated for the baseline and future periods. For each irrigation district (i), Eq. (1) calculates the  
42 Crop Water Requirement (CWR) of crop (j) associated with an irrigated area ( $A_{i,j}$ ), which is a function  
43 of the meteorological variables ( $PET_i$  and  $P_i$ ), available soil moisture ( $SM_i$ ), a crop coefficient ( $Kc_j$ ),  
44 and an irrigation efficiency parameter ( $E_{i,j}$ ).  
45  
46  
47  
48  
49  
50

$$51 \quad AWD_{i,t} = \sum_j E_{i,j} \times A_{i,j} \times (ETP_{i,t} \times Kc_{j,t} - P_{i,t} - SM_{i,t}) \quad \forall i, t \quad \text{(Eq. 1)}$$

### 52 **2.3.3. Impact of climate change on the hydrology**

53  
54  
55  
56  
57  
58  
59  
60  
61  
62  
63  
64  
65  
66  
67  
68  
69  
70  
71  
72  
73  
74  
75  
76  
77  
78  
79  
80  
81  
82  
83  
84  
85  
86  
87  
88  
89  
90  
91  
92  
93  
94  
95  
96  
97  
98  
99  
100  
Climate change is also expected to perturb the hydrological regime. To assess this impact in our case  
study (section 3), the hydrological modelling framework ④ follows a three-step process for each of the  
sub-river basins defined. The first step was to restore the natural flow regime of the sub-basin by



1  
2  
3  
4 adding urban and agricultural water withdrawals to the observed monthly river discharges (Chazot,  
5 2011; Vier and Aigoui, 2011). Then, a monthly, two-parameter rainfall-runoff model (GR2M,  
6 Mouelhi et al., 2006) was calibrated and validated using historic precipitation, PET and flow data for  
7 each sub-basin (Caballero and Girard, 2012). The Root-Mean-Square Error (RMSE) was used to  
8 automatically calibrate the model by means of optimisation. The validation/calibration performances  
9 of the model were assessed using the Nash and Sutcliffe (1970) efficiency in addition to the RMSE<sup>1</sup>.  
10 The results of the calibration and validation of the hydrological models are considered good enough to  
11 assess the impact of climate change in water resources, more details on the calibration and validation  
12 are presented in Appendix C.  
13  
14  
15  
16  
17  
18

## 19 **2.4. Assessing agricultural deficits**

20  
21  
22 In a business-as-usual scenario (BAU) with no adaptation measures, water deficits are likely to appear  
23 in the future, due to a combination of increased water demand and reduced hydrological flows.  
24 Assuming that the existing regulatory framework is maintained, that deficit would mainly be borne by  
25 agriculture. Urban demand, legally defined as the highest priority use, would be satisfied first. Then,  
26 environmental flows should be guaranteed, while agriculture would only be authorized to use the  
27 remaining water available.  
28  
29  
30

31 Performance of water resources systems is usually assessed using indicators, such as reliability,  
32 resiliency and vulnerability criteria (Hashimoto, 1982; Loucks, 1997). In our case, we adapted the  
33 Demand Reliability Index (DRI) (Martin-Carrasco, *et al.*, 2013), which quantifies the reliability of a  
34 system to satisfy demands, by computing the ratio between the demand satisfied for a given acceptable  
35 level of reliability and the total annual demand. French legislation requires all demands to be fully  
36 supplied in at least 4 out of 5 years, giving priority to urban use and environmental requirements over  
37 agricultural use (MEEDDT, 2008). This allows a deficit in the supply of agricultural demand with a  
38 return period T of 5 years (5-year deficit). In other words, this corresponds to supplying the full  
39 agricultural annual demand with a level of reliability (noted r) of 80 % ( $r = (1-1/T) \times 100$ ). In  
40 accordance with this requirement, we defined an Agricultural Deficit Index (ADI) to characterize the  
41 degree of failure of the system to meet this acceptable 5-year deficit. The ADI is the ratio between the  
42 maximum annual deficit that occurs with a return period T\* less than T equal 5 years ( $T^* < T=5$ ) and  
43 the annual demand of a given ADU (Eq. 2).  
44  
45  
46  
47  
48  
49  
50  
51

$$52 \text{ADI}_{T^*}^a = (1 - S_{T^*}^a / \text{Dem}^a) \times 100 \quad (\text{Eq. 2})$$

53 Where  $\text{ADI}_{T^*}^a$  is the Agricultural Deficit Index for the agricultural annual demand at the ADU “a”  
54 associated with a return period T\* lower than the acceptable value T;  $S_{T^*}^a$  is the minimum annual water  
55  
56

---

57  
58 <sup>1</sup> Nash-Sutcliffe efficiency is a criterion for quantifying models performance in comparison to the observed  
59 values (relative measure) and therefore, it allows comparison with other models, whereas the root mean square  
60 error characterizes only the performance in absolute values (Pushpalatha et al. 2012).  
61  
62  
63  
64  
65

1  
2  
3  
4 supplied to the ADU “a” in Mm<sup>3</sup> per year, with a return period T<sup>\*</sup>; Dem<sup>a</sup> is the annual demand at the  
5 ADU “a”, in Mm<sup>3</sup> per year. An ADI equal to 0 means that the system fulfils the legal requirements of  
6 having no more than a 5-year deficit; if this condition does not hold (ADI greater than 0 and up to 1),  
7 the index quantifies the magnitude of the greater than acceptable deficit in comparison to the annual  
8 demand.  
9

#### 10 11 12 **2.4.1. River basin optimisation model** 13 14

15 First, a river basin optimisation model ⑥ was developed to represent water allocation in the basin and  
16 to estimate the deficit in the present baseline and the BAU future scenarios, integrating the demand  
17 and hydrological scenarios previously defined (Section 2.2 and 2.3). The model minimises agricultural  
18 deficit with a return period of less than 5 years, with a monthly time step (objective function, Eq.3), by  
19 optimising reservoir management and water allocation (decision variables) over the time horizon.  
20 Meanwhile, water allocation has to meet the environmental requirements and the target supplies for  
21 the urban demands in order of priority.  
22

$$23 \text{ Minimize } \prod_D = \sum_t \sum_a Def_{a,t}^{T^*} \quad (\text{Eq. 3})$$

24 Where, t is the time step index (monthly); “a” is the index of the ADU, and  $Def_{a,t}^{T^*}$  is the deficit for  
25 ADU “a” at month “t” with a return period T<sup>\*</sup> less than T. Additional equations are presented in  
26 Appendix B.  
27

28 The sub-river basins are represented in a flow network of nodes (diversions and/or storage nodes),  
29 linked by arcs that represent the river stretches. UDUs and ADUs are connected to the corresponding  
30 nodes of the sub-basin from which they abstract or return water. At each node and for each monthly  
31 time step, constraints are imposed on demand targets, minimum environmental flow requirements, and  
32 reservoir operating rules for both flood protection and dead storage volume. If less water is available  
33 than is needed to meet the constraints, there will be a deficit in the water available to supply  
34 agricultural demand. Optimisation is carried out over a monthly flow time series, first on the baseline  
35 period (1971-2000) and then for the global (climate and demand) change scenarios corresponding to  
36 the future period (2046-2065). The model was implemented using GAMS (General Algebraic  
37 Modelling System, Rosenthal, 2012) and applying Mixed Integer Programming with the CPLEX  
38 solver.  
39  
40  
41  
42  
43  
44  
45  
46  
47  
48  
49

#### 50 51 **2.4.2. Environmental flow requirements** 52 53

54 In-stream environmental flow requirements ⑤ aim at maintaining the environmental functions of the  
55 river by means of an appropriate flow regime (Postel and Richter, 2003). Ideally, a seasonally variable  
56 flow regime is needed to sustain freshwater ecosystems (Poff *et al.*, 1997). However, the current  
57 approach applied in the river basin defines only minimum in-stream flow requirements for selected  
58 nodes. A hydraulic method (Gippel and Steardson, 1998) using the habitat method ESTIMHAB  
59  
60  
61  
62  
63  
64  
65

1  
2  
3  
4 (Lamouroux, 2002) was applied by Vier and Aigoui (2011) to define minimum flow thresholds at each  
5 node of the basin.  
6

### 7 8 **2.4.3. Infrastructure management** 9

10 The reservoir is managed as a multipurpose reservoir. Operating rules fix only the monthly dead-  
11 storage and maximum volume of the reservoir for flood protection (Chazot, 2011). The volume  
12 released from the reservoir and the volumes of water allocated are defined during the optimisation  
13 procedure. Direct evaporation from the reservoir has been calculated based on estimates of average  
14 annual reservoir evaporation in the south of France (Vachala, 2008).  
15  
16  
17  
18

## 19 **2.5. Selecting least-cost adaptation programme of measures** 20 21

22 Once the deficits are calculated for the present and future periods, the river basin optimisation model is  
23 converted into a least-cost river basin model that minimises the cost of a programme of adaptation  
24 measures (given the operational and physical constraints of the water resources system), which include  
25 supplying agricultural and urban demands, and meeting the environmental flow targets. The catalogue  
26 of potential adaptation measures consist of capacity development projects and water conservation  
27 measures that could be implemented in the different UDU and ADUs of the system.  
28  
29  
30  
31  
32

### 33 **2.5.1. Identification and assessment of adaptation measures** 34

35 Workshops with local stakeholders were held to identify possible adaptation measures to cope with  
36 increased water deficit in the basin, which were then documented by a series of complementary  
37 technical studies. Water conservation measures ⑧ are considered at the level of UDU (municipality or  
38 group of municipalities) and ADU (irrigated area) to define a set of local adaptation measures. For  
39 each unit, we estimated the volume of water that could be saved by implementing these measures. The  
40 equivalent annual cost of the measures was calculated by applying a 4 % discount rate on investment  
41 and operating costs ⑩ .  
42  
43  
44  
45  
46

47 In terms of capacity expansion measures ⑨ , a specific study was carried out to identify aquifers  
48 unconnected to the river (Rinaudo *et al.*, 2013b) that could be sustainably used by drilling new wells.  
49 The sustainable yield and costs (investment, operation and maintenance) associated with the projected  
50 wells were estimated. The catalogue of measures includes the possibility of building a desalination  
51 plant to supply coastal municipalities. Investment and operating costs for such plants were estimated  
52 based on figures provided by local engineering companies and cross-checked with values reported in  
53 international surveys (Zhou and Toll.,2005; Ghaffour *et al.*,2013).  
54  
55  
56  
57  
58  
59  
60  
61  
62  
63  
64  
65

## 2.5.2. Least-cost optimisation model

The LCRBOM (11) was built onto the previous optimisation model (section 2.4.1). The objective function (Eq.4) minimises the total annualized cost of the measures applied to meet urban and agricultural demands and minimum in-stream flow constraints. For that purpose, measures are selected to reduce the deficit in agricultural demand (Eq. 4 and 5).

$$\text{Minimise } \Pi = \Pi_C + M \times \Pi_D \quad (\text{Eq. 4})$$

Where:  $\Pi_D$  is defined in Eq. 3;  $M$  is a very large positive number that is higher than the sum of the cost of all the other measures.

$$\Pi_C = \sum_m \text{Act}(m) \times \text{Cost}(m) + \sum_t \sum_m V(m, t) \times \text{VCost}(m) / N \quad (\text{Eq. 5})$$

where,  $m$  is an index of the measures of urban or agricultural demand, groundwater or desalination project;  $t$  is the time step index (monthly);  $\text{Act}(m)$  are binary decision variables of the measures  $m$ ;  $\text{Cost}$  is the fixed equivalent annual cost (€) of the measures,  $m$ ;  $V$  is the volume of water in  $\text{Mm}^3/\text{month}$  coming from the groundwater and desalination measures, respectively;  $\text{VCost}$  is the variable costs of the groundwater and desalination measures in € per  $\text{Mm}^3$  per month;  $N$  is the total number of years of optimisation; Additional equations are presented in Appendix B.

The supply and demand management measures are characterized by their cost and effectiveness for each ADU and UDU. By introducing slack variables with a very high cost (far beyond the range of costs of the measures) in the objective function, the model avoids unfeasible cases in which implementation of every measure is insufficient to avoid a deficit in agricultural water supply.

## 3. Case study and future scenarios

### 3.1. Case study description

The modelling framework was implemented for the River Orb basin (1580  $\text{km}^2$  -Figure 2), located on the French Mediterranean coast. The Mediterranean region is projected to be affected by climate change, and has been defined as a “hot spot” on a global scale (Giorgi and Lionello, 2008; Mariotti *et al.*, 2008), where severe impacts on water resources are likely (Bates *et al.*, 2008). The catchment is characterized by a Mediterranean climate and hydrological regime with significant low flows in summer and flash flood events in autumn. The average annual natural flow is 850  $\text{Mm}^3$ . While rainfall is abundant in the hilly upstream area (1800 mm per year), it is much scarcer in the coastal area (570 mm), where most of the population, agriculture, tourism and other economic activities are located. The River Orb and its alluvial aquifer form the main resources for supplying urban areas with drinking water. Traditional gravity channel irrigation systems also depend on these resources to irrigate crops in the upstream part of the catchment (1000 ha). A more efficient and larger pressurized system, developed in the 1960s, supplies irrigation water to agriculture in the coastal plain (5000 ha). River

flows are regulated by the Mont d'Orb multipurpose reservoir (30.6 Mm<sup>3</sup> of usable capacity, with a mean annual inflow of 101.8 Mm<sup>3</sup>). It was constructed to store water for irrigation downstream and is also used to protect against flood risk. It is only marginally used to produce hydropower.

At present (baseline situation), urban and agricultural water demands represent 62 % and 38 % of total water demand, respectively, in an average climatic year. With a demand to resources ratio of less than 20 %, the total demand for environmental requirements and consumptive use falls within the available annual water resources during a dry year (Table 1). Under baseline conditions, the annual balance of supply and demand at basin scale is satisfactory. However, the allocation of scarce water resources becomes an issue during the summer, for both baseline and future periods. We calculated the available water resources for the 5-year low-flow for an annual or summer period (mid-May to mid-September). The environmental requirements and demands for consumptive uses approach the level of available natural resources during these periods (60 %) and the demands are likely to exceed available resources in future summer periods (125 %, for the considered climate scenario). Notwithstanding, this initial balance of resources and demand does not consider the inter- and intra-annual regulation provided by the reservoir, as is the case with the river basin management model developed in this study.

The river basin authority has already classified the water bodies of the Orb river basin as being at risk of failing to meet the good quantitative status required by the WFD (AERMC, 2009). The two most recent water management plans for the River Orb states the improvement of quantitative water resources management as one of its main objectives (SMVO, 2013).

Demand (Mm <sup>3</sup> )	Urban	Agricultural	Environmental	Total	Resources (Mm <sup>3</sup> )	Demand/resources (%)
<b>Baseline</b>	19.2	11.6	43.0	73.8	374 <sup>b</sup>	19.7 %
<b>Baseline summer<sup>a</sup></b>	7.8	10.8	14.5	33.1	55 <sup>b</sup>	60.2 %
<b>Future</b>	21.9	28.3	43.0	93.2	276 <sup>b</sup>	33.7 %
<b>Future summer</b>	8.9	27.1	14.5	50.5	40.4 <sup>b</sup>	125 %

a. The summer period corresponds to four months in the summer (mid-May to mid-September)

b. In this case, the resources are estimated for a dry year with a 5-year return period at the outflow of the basin

**Table 1: Annual and summer water balance of the Orb river basin baseline and future scenarios**

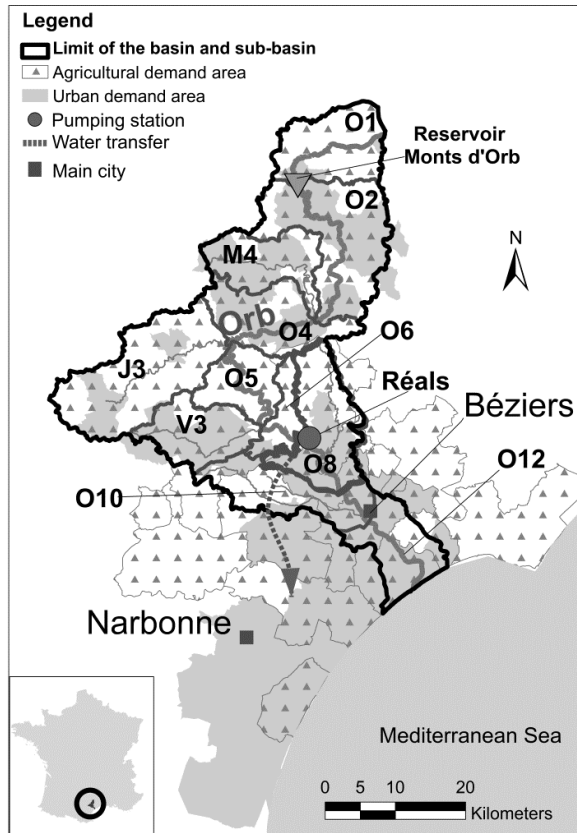


Figure 2: Case study area: the Orb river basin

### 3.2. Future demand scenarios

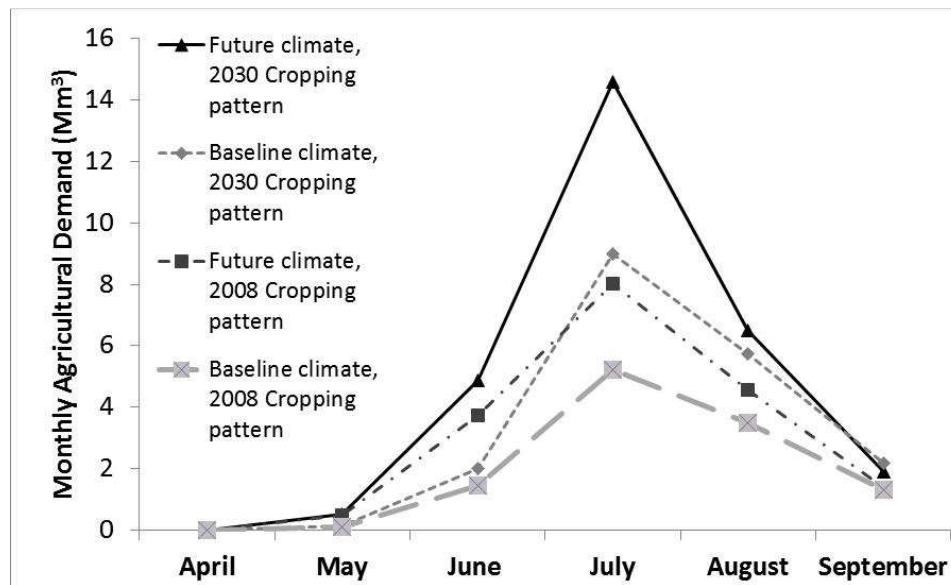
Change in future urban water demand is mainly driven by population growth (1 % per year, on average). *Per capita* consumption is forecasted using the econometric model (section 2.2.1). Over the 2008-2030 period the following assumptions were made: 1) a 30 % increase in water prices and a 10 % decline in *per capita* consumption, due to technological change, 2) a stable household income and 3) a 6 % increase of *per capita* consumption due to climate change (mainly due to swimming pool evaporation and lawn watering) (Table 3). Overall, urban water demand is expected to increase by 14 % between the baseline and future periods.

Agricultural demand is expected to increase at a much faster pace during the same period due to the combined effect of an increase in irrigated area and a rise in the evapotranspiration rate (section 2.2.2). Stakeholders who participated in the definition of the future agricultural development scenarios envisaged a significant development of irrigation practices within the existing vineyards (Table 2), as a way to secure the harvest in case of drier summers, due to a combination of regulatory, economic, and technical changes. Climate change will certainly exacerbate this trend. The marginal (and combined) effects of changes in irrigated area and climate are depicted in Figure 3. Climate change alone would increase demand by 58 % (considering that the crops grown and the area under irrigation

remain unchanged). Socio-economic change alone would result in a 64 % increase. When combined, the two drivers result in a 145 % increase in irrigation water demand.

Demand	Urban	Agricultural
<b>Main assumptions</b>	+ 30 % of water price	25 % of the vineyard is irrigated (5% in 2008)
	- 10 % due to savings	+ 100 % of market gardening
	+ 6.5 % due to climate change;	- 50 % of orchards
	Constant household incomes	Constant irrigation efficiency

**Table 2 Main assumptions of the demand forecasting models and results at river-basin scale.**



**Figure 3: Changes in the agricultural water demand at basin scale for various scenarios.**

### 3.3. Future hydrological scenario

For the chosen climate scenario, annual PET is likely to increase by 12 % compared to the baseline period (1971-2000), with monthly variation from +19.6 mm in June to +1.9 mm in February. Regarding precipitation, the average decrease is expected to be 8 % per year, characterized by an uneven distribution over the year ranging from -50 % in January to +20 % in August. The comparison of the 5-year monthly low flows (QMNA5) for the baseline and future periods illustrates the projected impact of the considered climate change scenario on water resources (simulated using tools described in section 2.3.3), leading to a 25 % decrease in river flow at basin scale, though with spatial variation depending on the sub-basin (Table 3).

Sub-basin	O1	O3	M4	O4	J3	O5	V3	O6	O8	O10	O12	Basin
<b>Baseline</b>												
<b>Low-Flow (1971-2000)</b> (Mm <sup>3</sup> per month)	1.07	0.75	0.15	0.42	0.89	0.03	0.74	0.18	0.05	0.06	0.10	4.52
<b>Future (2046-2065)</b>												
	0.66	0.47	0.10	0.34	0.71	0.02	0.69	0.18	0.03	0.04	0.05	3.41
<b>Variation</b>	-38 %	-37 %	-29 %	-20 %	-20 %	-24 %	-7 %	-1 %	-40 %	-38 %	-55 %	-25 %

**Table 3: 5-year monthly low-flow (QMNA5) by sub-basin under baseline and future scenarios**

### 3.4. Adaptation measures

Eleven types of water conservation measures were identified, nine of which target urban use (MU1 to MU9) and two of which relate to agricultural uses (MA1 and MA2). Urban water conservation measures are aimed at facilitating the adoption of water saving devices and practices, through subsidies or water conservation tariffs (MU5), and at reducing leakage in water distribution networks (MU1). The two agricultural water conservation measures consist of improvements in the technical efficiency of irrigation systems. MA1 relates to the modernization of traditional gravity irrigation system located in the upstream part of the river basin, replacing it with sprinkler irrigation. MA2 is aimed at developing drip irrigation in the lower part of the river basin, where water distribution already uses pressure networks. These measures are therefore mutually exclusive. Overall, 462 local adaptation measures were evaluated for the 84 UDUs, 19 measures for the 19 ADUs. Five groundwater projects and the desalination plants can supply 18 and 22 UDUs, respectively. The adaptation measures are characterized by their equivalent annualized cost and the saved and new water (Table 4), either by saving water on the demand side (water conservation) or by providing new resources on the supply side (capacity expansion). Measures are further detailed in Appendix A.

Description of measure	Maximum annual volume available in	Average annualized unit cost	UDU/ADU affected by the
------------------------	------------------------------------	------------------------------	-------------------------



		2030 (Mm <sup>3</sup> )	(€/m <sup>3</sup> )	measure
<b>Water conservation measures (Demand side)</b>				
MU1	Reduction of leaks in urban water distribution networks	3.28	0.77	37
MU2	Installation of water conservation devices (faucet aerators, shower flow reducer, etc.) by households	0.36	0.56	62
MU3	Water consumption audits for single family houses and change in appliances	0.52	1.16	62
MU4	Same as U3 for multifamily housing units	0.51	1.64	33
MU5	Installation of automated reading meters and use of seasonal water tariffs to reduce peak season demand	0.83	0.66	62
MU6	Installation of water saving devices in hotels (faucet aerators, toilet flushes)	0.04	0.61	20
MU7	Water consumption audits of campsites and holiday parks. Installation of low flow flushes / showers, leakage detection in campsite distribution network, etc.	0.18	1.55	10
MU8	Replacement of water intensive landscapes with xeric vegetation (public gardens)	0.59	0.68	62
MU9	Replacement of irrigated lawns with artificial turf for sport grounds	0.43	1.95	7
MA1	Conversion of gravity irrigation systems to pressurized / sprinkler irrigation	0.81	0.16	7
MA2	Development of drip-feed irrigation at farm level in all pressurized irrigation systems	1.56	0.54	11
<b>Capacity expansion measures (Resource side)</b>				
GW	Substitution of water intakes in the River Orb (and alluvial aquifer) by other groundwater resources	1.00	1.89	5
DS	Substitution of water intakes in the River Orb by desalinated water (coastal municipalities)	3.60	1.22	2

**Table 4: Main characteristics of the adaptation measures**

## 4. Results

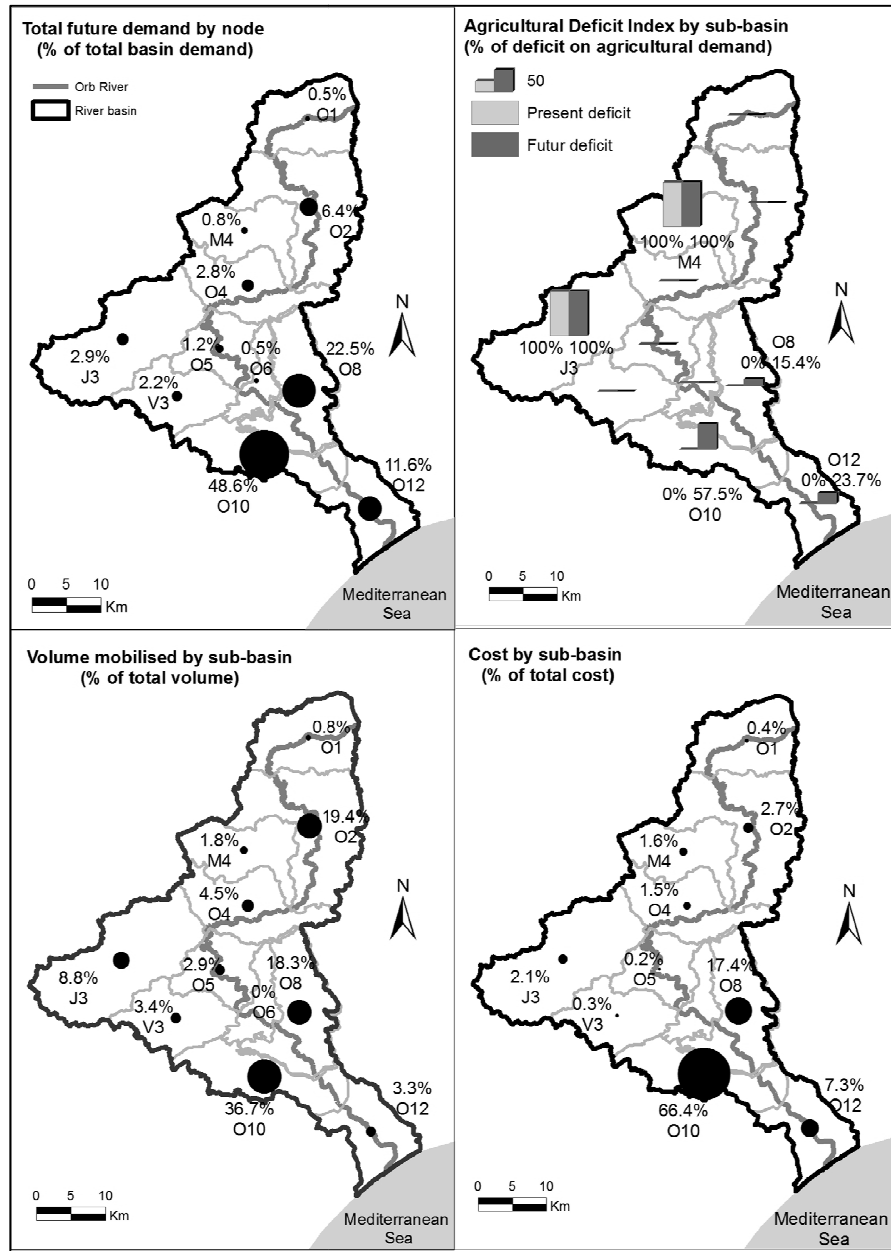
### 4.1. Present baseline scenario

Using the optimisation model, Agricultural Deficit Indices (ADI, section 2.4.1) were computed for the historical hydrology and current demands (baseline scenario) and aggregated by sub-basin. Its spatial distribution was found to be uneven (Figure 4, top-right). In the baseline scenario, ADI reaches the

1  
2  
3  
4 maximum value (100 %) in the Mare (M4) and Jaur (J3) sub-basins, meaning that legal requirements  
5 are not fulfilled in these sub-basins (a deficit of magnitude equal to the demand occurs for a return  
6 period of less than 5 years). These sub basins correspond to tributaries of the River Orb that do not  
7 benefit from regulation by an upstream reservoir. This water deficit was mentioned in previous  
8 studies, and actions are already being implemented to address these issues (Vier and Aigoui, 2011). In  
9 contrast, the higher demand in the Orb sub-basins, which benefit from regulation from the upstream  
10 reservoir (O2, O4, O5, O6, O10 and O12), can be supplied as required for the baseline scenario.  
11  
12  
13  
14

## 15 **4.2. Business-as-usual future scenario**

16  
17  
18 In the future business-as-usual (BAU) future scenario, the ADI increases under the impact of higher  
19 demands and scarcer water resources. In addition to the basins that show a deficit under the baseline  
20 scenario (M4 and J3), three more downstream sub-basins (O8, O10 and O12) show deficits for the  
21 future scenario (Figure 4, top-right). Thus, the decrease in summer flow impacts, first, the sub-basins  
22 that do not benefit from flow regulation from the reservoir; then, the downstream sub-basins with the  
23 highest demands (Figure 4, top-left) and the lowest natural flows (Table 3). The impact of global  
24 change thus challenges the current protection against dry summers provided by the reservoir and  
25 underlines the need for additional measures to meet environmental flow requirements and supply the  
26 agricultural demands in the future.  
27  
28  
29  
30  
31  
32  
33  
34  
35  
36  
37  
38  
39  
40  
41  
42  
43  
44  
45  
46  
47  
48  
49  
50  
51  
52  
53  
54  
55  
56  
57  
58  
59  
60  
61  
62  
63  
64  
65



**Figure 4 : Spatial distribution of: future demand in the Orb river basin (top-left); present and future agricultural deficit (top-right); saved and new (mobilised) water volume by sub-basins (bottom-left); and cost by sub-basin (bottom-right).**

### 4.3. Least-cost programme of adaptation measures

A least-cost PoM was selected using the LCRBOM developed. At the sub-basin scale, the spatial distribution of the volumes to be mobilised (sum of the volumes saved by water conservation measures and provided by capacity expansion measures; Figure 4, bottom-left) and the associated costs (Figure 4, bottom-right) do not follow the pattern of the distribution of deficits (Figure 4, top-

right). While the greatest deficits occur in tributaries M4 and J3 (ADI of 100 %), their contribution to the total cost and volume saved is low. This difference is explained by their lower demand, so there is less potential for water saving through efficiency improvements. The volumes and costs associated with these basins are lower even if the need exists. In contrast, the sub-basins with no deficit (O1, O2, O4, O5 and V3) have measures applied that also benefit other sub basins. The downstream basins with the highest demand take up the biggest share of the new and saved water volume. Sub-basin O12 has a high ADI, but few measures are applied in this area, given that it benefits from measures implemented further upstream.

#### 4.4. Trade-off analysis

The least-cost optimisation model can also be used to assess potential trade-offs between agricultural demand, environmental requirements and economic cost of the PoM.

##### 4.4.1. Trade-off between agricultural demand and adaptation cost

Increase in agricultural water demand is a key driver that can be actively influenced by local policy makers depending on the agricultural policy they promote (Table 1). Therefore, there is a possible trade-off between extending the area of irrigated agriculture (in particular irrigated vineyards) and the cost of water management measures that would be needed to offset the increased demand. To represent the effect of various agricultural development scenarios, we analysed the consequences of varying agricultural demand at basin scale by +/- 5 and 10 % (Figure 5). A +/-10 % variation in the agricultural demand at basin scale – representing a volume of +/- 2.9 Mm<sup>3</sup> per year – translates to a cost variation of between -95 % and +137 %, (0.11 to 5.68 M€), respectively). Consequently, the anticipated skyrocketing in the surface area of irrigated vineyard in the basin could challenge the management of water resources or represent an unaffordable cost.

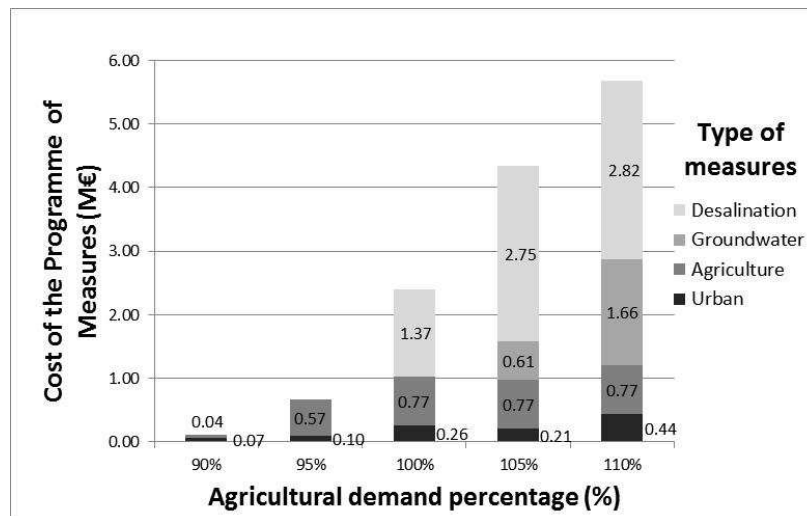


Figure 5: Cost of the PoM for different levels of agricultural demand at basin scale

The defined least-cost PoM illustrates the great potential of demand management measures, as well as the fact that expensive capacity expansion projects (groundwater and/or desalination) could be avoided if the increase in agricultural demand were limited. For the lowest level of agricultural demand (90 % and 95 % of the estimated future value) only demand management measures were selected. Measures to expand capacity are selected only once the increase in agricultural demand equals or exceeds 100 % of the future scenario.

#### 4.4.2. Trade-off between environmental flow and adaptation cost

The model can also be used to prioritise where it is economically more efficient to concentrate efforts in defining environmental flow requirements. Indeed, the total cost of the PoM can change significantly depending on the level on environmental flow imposed on each sub-basin (Figure 6). Variations of +/- 5 % of the environmental flow requirements, applied in different sub-basins, give rise to contrasting impacts on the cost of the PoM. For a given variation of in-stream flow requirements, the impact on PoM cost is highest in O1. While sub-basins O2 and O4 present greater environmental flow requirements than O1, the cost of the PoM at basin scale is less sensitive to their environmental flow requirements. These results highlight the strategic importance of ecological flow definition in sub-basin O1, which accommodates the Monts d’Orb reservoir that regulates most of the River Orb flow. Most in-stream flow in this part of the river comes from reservoir releases. Therefore, decision makers control the flow regime in this section of the River Orb, which allows them to further assess the trade-off between costs and environmental requirements.

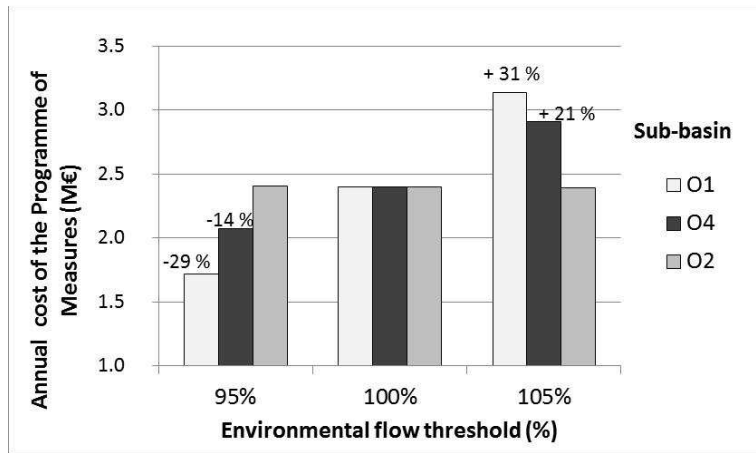


Figure 6 : Cost of the PoM for different environmental flow thresholds in three sub-basins (O1, O2 and O4)

### 4.4.3. Trade-off between environmental flow requirement, adaptation cost and agricultural demand

A fixed variation in volume (ranging from -0.1 and + 0.1 Mm<sup>3</sup>/month) was applied to both the environmental flow in the headwaters of the basin (sub-basin O1) and to the agricultural demand of the downstream ADU, “A14” (Figure 7). In this case, the total cost of the PoM exhibits higher sensitivity to variations in agricultural demand in ADU “A14” than to environmental flows in sub basin “O1”. The same increase in PoM cost allows an increase of agricultural demand in ADU “A14” (grey arrow) by 0.1 Mm<sup>3</sup>/month or an increase of environmental flow in sub-basin O1 by 0.2 Mm<sup>3</sup>/month (dark arrow). This comparison illustrates the kind of trade-off that can be compared at river basin scale.

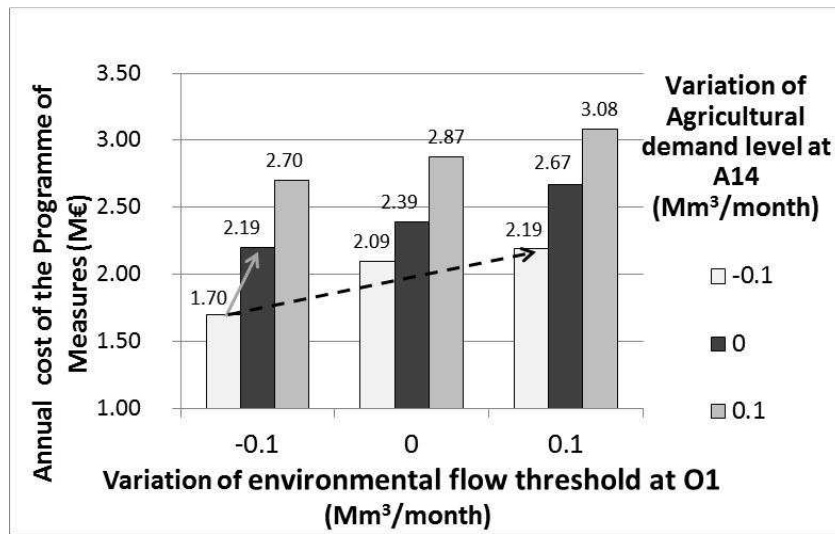


Figure 7 : Cost of the Programme of Measures for different levels of agricultural demand in A14 and environmental flow in O1

## 5. Discussion

### 5.1. Framework limitations

The modelling framework presented provides a useful method to explore future adaptation strategies in the face of global change. However, the method implemented in the present study has revealed several caveats and limitations that need to be acknowledged.

The first limitation is the lack of any assessment of uncertainty. Uncertainty in water resources modelling stems from an incomplete understanding of the hydrological processes modelled (e.g. surface-groundwater interactions), from imprecise hydrological data used for calibration, and from the choice of models used for simulating sub-components of the system (water demand, hydrological

1  
2  
3  
4 processes), (Refsgaard et al., 2007). In the case of the analysis of global change scenarios in which we  
5 no longer assume that the hydrology is stationary, this is far more complex, since we need to add the  
6 uncertainty on the meteorological variables (defined as plausible scenarios derived from GCM  
7 projections, with a large range of variations among them) and on the resulting inflow time series that  
8 define available resources in the basin (Brown and Wilby, 2012). Moreover, land use changes will  
9 affect water demand but also affect the hydrology and even the climate, creating a circle of feedbacks  
10 demanding different approaches for designing adaptation under uncertainty (eg. Brown et al. 2012).  
11 Large ensembles combining several climate models and emission scenarios could be needed to  
12 quantify the uncertainty linked to climate modelling (Barsugli *et al.*, 2012). However, it is still a  
13 matter for discussion whether the improvement achieved by using ensembles instead of a single model  
14 is as large as expected, and how this translates into improvements in the projections (Knutti *et al.*,  
15 2010). Other sources of uncertainty are inherent to each discipline involved in the framework as for  
16 instance water demand forecasting that relies on future socio-economic conditions (*e.g.* agricultural  
17 markets) with hardly predictable uncertainties. Overall, given the resulting global uncertainty, there is  
18 call for a new approach to adaptation strategies. The top-down approach – which underlies the  
19 modelling framework presented in this paper – could be complemented by a bottom-up approach,  
20 which analyses how a set of possible strategies perform over a large range of possible futures (Wilby  
21 and Dessai, 2010; Lempert and Groves, 2010). To illustrate the development of the framework, we  
22 indeed have used one single climate and demand scenario, but the same approach could be developed  
23 under different climate and demand scenarios, and then proceed with a characterization of the  
24 robustness of the proposed adaptation plan across these scenarios.

25  
26  
27  
28  
29  
30  
31  
32  
33  
34  
35  
36  
37 Another limitation of our modelling framework lies in its normative nature. Indeed, it identifies a  
38 solution that can theoretically maximise social welfare but it does not integrate other factors  
39 considered by stakeholders to select relevant adaptation strategies. A condition for implementing the  
40 optimised solution is the existence of a strong planning authority and a central decision-making  
41 capability to implement the optimal solution or an alternative approach that could lead to a close-to-  
42 optimal solution. This issue is called the limitation of ‘perfect cooperation’ (Madani, 2010), or  
43 alternatively, ‘perfect command and control’ that is assumed by the optimisation procedure. Actually,  
44 no such authority exists in the context of river basin management in France (or in many other  
45 countries). Relevant stakeholders (urban, agricultural, and environmental) are represented in the basin  
46 authority and sit around the table to negotiate a programme of measures. As such, the model can  
47 provide useful insight for water planners acting at policy level (such as a water agency, government  
48 agency or county council), who have been associated with the development of this initial model.  
49 However, the model would not provide the range of information needed by local stakeholders (water  
50 users’ representatives, elected politicians at municipal levels) who will be concerned by the actual  
51 implementation of some of the adaptation measures considered in our study.  
52  
53  
54  
55  
56  
57  
58  
59  
60  
61  
62  
63  
64  
65

1  
2  
3  
4 In future research, we intend to explore, in conjunction with more qualitative research (focus groups,  
5 scenario workshops, participatory modelling) how the model could be used as a medium for wider  
6 stakeholder participation in adaptation planning. This will imply not only a discussion of the model  
7 assumptions and structure but also a possible restructuring of the model to include additional processes  
8 and output indicators as required by stakeholders. This also implies an opportunity to incorporate lay  
9 stakeholders' knowledge into the modelling framework – moving from an interdisciplinary to a trans-  
10 disciplinary approach (Pohl, 2005).

11  
12 For instance, the distribution of costs associated with the optimal solution (or 'first-best' solution to  
13 use economists' terminology) may not be considered fair and equitable; there may be calls to search  
14 for a negotiated 'second-best' option – involving financial transfers between stakeholders. Issues such  
15 as agreements on costs and measures allocation among the different players in a basin could be further  
16 integrated in the analysis. This is one of the challenges to be addressed next in our modelling research.  
17 Other limitations are inherent to the optimisation procedure selected, as it is the 'perfect foresight' of  
18 deterministic optimisation (Labadie, 2004). By using this kind of optimization, we assume that an all-  
19 knowing manager would know the hydrological future with certainty and therefore will be able to  
20 select ideally the measures or to release water from the reservoir when needed. This leads us clearly to  
21 an overoptimistic result, this means an underestimation of the adaptation needed, and therefore the  
22 results given here must be taken as the lower bound of the adaptation strategy needed. This  
23 optimization method, even if appropriate to the relative simplicity of the case study, could need to be  
24 adapted to more complex water resource systems (greater storage capacity and temporal correlation of  
25 the hydrology) as the importance of perfect foresight generally decreases significantly with the amount  
26 of over-year storage (Draper et al., 2011). However, the effects of perfect foresight have been  
27 considered as acceptable even in some complex water systems (ie. California water supply network,  
28 Newlin et al., 2002 and Pulido-Velazquez et al., 2004). This part of the framework presented could  
29 require further improvement to overcome the perfect foresight of the optimization looking at methods  
30 such a Stochastic Dynamic Programming (SDP) or combining simulation models with genetic  
31 algorithms.

32  
33 Finally, other types of measures (water quality measures, river restoration measures, etc.) would also  
34 need to be included in a general adaptation programme of measures, although here the focus is on  
35 water quantity issues (water scarcity). Assessing the trade-offs at stake between the planning  
36 objectives of environmental preservation, economic development and adaptation cost, is a necessary  
37 step for the definition of a programme of measures. The next step would be as well to consider the  
38 phasing of the investment needed to achieve the objectives defined following a more conventional  
39 least-cost planning approach to advise on the investment required or a real option analysis (Jeuland  
40 and Whittington, 2014) to include as well the possibility to learn along the planning process. The  
41 framework is indeed a first step, in terms of adaptation, towards what could be the development of a  
42 full adaptive management strategy that would consider an iterative process of planning, implementing  
43  
44  
45  
46  
47  
48  
49  
50  
51  
52  
53  
54  
55  
56  
57  
58  
59  
60  
61  
62



1  
2  
3  
4 and updating the plan as more information is obtained and lessons are learned by the decisions makers  
5 when they experience changing conditions.  
6

## 7 8 **5.2. Insights from the interdisciplinary approach** 9

10 This paper illustrates how analysing long-term changes and adaptation to global change in river basin  
11 management requires bringing multiple scientific disciplines together and binding them into a single  
12 framework, facilitated by integrated modelling. Our experience suggests that deploying such an  
13 interdisciplinary approach is by no means a trivial task. During our research, a continuous (and time-  
14 consuming) dialogue took place to construct a shared representation of the river basin, specify the  
15 optimisation problem, identify and formalize water management constraints in that model, choose  
16 spatial and temporal scales at which the model should be developed and the nature of adaptation  
17 measures to be considered. A conceptual model was developed gradually and, through an iterative  
18 process, progressively refined. Finding an appropriate temporal and spatial resolution of water  
19 resources modelling, which would be consistent with the economic analysis of water demand forecast,  
20 was also an iterative process. Each researcher had to adapt their approach (concept and tools) to fit in  
21 the overall optimisation model, seen as an end-point for research and integration. The modeller played  
22 a role of ‘guardian of integration’, as already reported in the literature (Kragt, *et al.* 2013). This  
23 integrative approach stands in contrast with multidisciplinary research where the various disciplines  
24 basically do their own thing in parallel, their conceptual and methodological choices remaining  
25 independent from each other (Mollinga, 2009). Creating this dialogue implies that researchers be  
26 willing to cross-disciplinary boundaries, that they invest time and energy to appropriate concepts and  
27 methodologies of the other disciplines. The success of such interdisciplinary approaches requires an  
28 attitude of ‘*engaged problem solvers*’ rather than ‘*detached specialist*’ (Pohl, 2005). This clearly rises  
29 team-work challenges (how to ensure communication, engagement, trust, coordination of disciplines)  
30 and also challenges the way the academia sometimes evaluates such integrative interdisciplinary  
31 research (Kragt, *et al.* 2013), these challenges being part of a cultural and historical barrier to the  
32 integration across disciplines (Hamilton, et al. 2015).  
33  
34  
35  
36  
37  
38  
39  
40  
41  
42  
43  
44  
45  
46  
47  
48

## 49 **6. Conclusions** 50

51 In Europe, as in many other parts of the world, recent legislation increasingly compels water planners  
52 to conduct *ex-ante* integrated assessment of policies deployed to adapt to global change. Because of  
53 the wide range of social, agricultural, environmental, economic and hydrological impacts associated  
54 with global change, policy analysts need to deploy interdisciplinary evaluation methodologies. This  
55 paper suggest that least-cost river basin optimisation models can provide a useful framework for  
56  
57  
58  
59  
60  
61  
62  
63  
64  
65

1  
2  
3  
4 integrating knowledge from various scientific disciplines, including economics, agricultural,  
5 hydrological and engineering sciences, to design global change adaptation strategies at basin scale.

6  
7 From a policy perspective, least-cost river basin optimisation models inform policy makers' decisions  
8 at the regional or basin level, by providing three main types of results. First, they can help to prioritise  
9 the allocation of measures in the basin to satisfy all constraints at a minimum total cost. The model  
10 helps users to understand that the optimal programme of measures is characterized by a spatial  
11 distribution of costs and water volume (saved or created), which is proportional neither to the deficit  
12 nor to the demands. This fact reflects differences in the actual efficiency of the measures at basin  
13 scale, depending on their spatial location. A water conservation measure implemented upstream not  
14 only allows the environmental target in the sub-basin to be met but also contributes to solving the  
15 problem in all downstream sub-basins. The integrated model captures this issue by accounting for the  
16 upstream-downstream interactions in the basin. These results provide valuable insight into the  
17 definition of first-best solution that could be a basis for negotiating a basin-scale adaptation strategy  
18 with the relevant stakeholders.

19  
20 Second, the model helps to prioritise the type of actions that need to be implemented. For instance,  
21 results of our case study suggest that certain water conservation measures should be systematically  
22 implemented, even for the lowest level of water deficit. The cost minimisation approach leads to a  
23 recommendation to implement water conservation measures in agriculture before engaging in projects  
24 to increase capacity. However, if agricultural demand grows above a certain value, capacity expansion  
25 measures – such as groundwater development or desalination plants – are needed to ensure that urban  
26 water demand and environmental flow targets are fully met. Further analysis could be conducted to  
27 assess the threshold level of agricultural development that would make capacity expansion measures  
28 unavoidable, and provide elements to further match water resources management and agricultural  
29 development at planning level.

30  
31 Third, the model can help evaluate possible trade-offs between development of uses, environmental  
32 objectives and costs of water management. This is useful information for regional and river basin level  
33 policy makers as they attempt to reconcile agricultural and urban development policies with  
34 environmental objectives. The model can be used to identify boundaries (in the mathematical sense of  
35 the word) between agricultural development, urban growth, water management cost and environmental  
36 objectives.

37  
38 The interdisciplinary modelling framework presented takes a step toward better integration of  
39 disciplines within a coherent framework for the integrated assessment of water resource systems'  
40 performances. It allows fruitful insights into water management that exceed the sum of particular  
41 disciplinary contributions. Even if the increasing complexity of water management issues call for the  
42 adoption of such an approach, whether this type of tools will become part of water managers' toolbox  
43 remains an open debate. It does not only raise questions about the financial resources to be dedicated

1  
2  
3  
4 to the development of such tools, but also about its acceptability and appropriation by those policy  
5 makers, technicians and stakeholders who are often not so familiar with integrated interdisciplinary  
6 approaches.  
7  
8  
9

## 10 **7. Acknowledgements**

11  
12 The study has been partially supported by ONEMA, by the Scarce Project (Consolider-Ingenio 2010  
13 CSD2009-00065) and IMPADAPT project (CGL2013-48424-C2-1-R) of the Spanish ministry  
14 MINECO (Ministerio de Economía y Competitividad) with European FEDER funds. Corentin Girard  
15 is supported by a grant from the University Lecturer Training Program (FPU12/03803) of the Ministry  
16 of Education, Culture and Sports of Spain. We also acknowledge the CERFACS for the climate  
17 scenarios provided from their SCRATCH 2010 dataset (March 2012 release -  
18 <http://www.cerfacs.fr/~page/work/scratch/>). We are very grateful to S. Chazot (BRLi), E. Vier and F.  
19 Aigoui (GINGERGROUP) and L. Rippert and its team from the SMVOL for their advice during the  
20 research and for the data provided. We thank as well the anonymous reviewers, and the Editor-in-  
21 Chief of Environmental Modelling and Software, Anthony Jakeman, for their support in the  
22 improvement of the manuscript and their encouraging comments.  
23  
24  
25  
26  
27  
28  
29  
30  
31  
32  
33  
34  
35  
36  
37  
38  
39  
40  
41  
42  
43  
44  
45  
46  
47  
48  
49  
50  
51  
52  
53  
54  
55  
56  
57  
58  
59  
60  
61  
62  
63  
64  
65

1  
2  
3  
4 **Appendix A:**

5 MU1 leakage reduction campaign in the water supply distribution network: This measure consists of a  
6 diagnosis of the network to identify leakages; then the leaking pipes are repaired. The water saved is  
7 estimated as the difference between the volume of losses before and after the repair. The life span of  
8 this measure is estimated to be 15 years.  
9

10  
11 MU2 Water saving kits for households: Water saving kits are provided to households on a voluntary  
12 basis. A 25 % participation rate is assumed for households to collect their kits from the municipality  
13 (free of charge), of which only 75 % are finally installed. The kit includes water saving devices for  
14 showers, sinks and toilets, according to the type of house (single or multi-family unit).  
15

16  
17 MU3 Water saving audit for individual houses: A specialist is paid to audit individual houses with or  
18 without a garden. A diagnosis of leakages is carried out and water saving devices are installed. Low  
19 cost devices are installed by default and the specialist is assumed to be paid for 2 hours of work as a  
20 plumber (40€/hour). The household pays the costs up to the threshold of savings realized on the water  
21 and electricity bill, the public authority adding a subsidy to pay the remainder. The rate of uptake is  
22 assumed to be 50 %, thanks to the positive impact of the subsidy.  
23

24  
25 MU4 Water saving audit for collective housing: This measure is applied only in municipalities with  
26 more than a hundred collective housing units (flats managed together). Managers of this type of  
27 housing are always looking for ways to cut costs, therefore they are assumed to adopt this measure  
28 readily (75 %) and the subsidies can be less than in M3. The measure offers the support of a  
29 professional to locate and fix leakages and to install water saving devices. Installation of individual  
30 water meters is also promoted and subsidized.  
31

32  
33 MU5 Seasonal pricing policy: The price of water is increased by 50 % during the peak period (from  
34 the 15<sup>th</sup> of May to the 15<sup>th</sup> of September). The price is decreased at other times of year in order to  
35 maintain an equivalent water bill for the permanent inhabitants. Only certain costs associated with the  
36 implementation of this measure are paid by the public authority, namely: remote reading water meters  
37 are installed and cost 5€ per year per household more than classic meters. The meter must also be read  
38 automatically once during the first few days of the peak period (3€ per household).  
39

40  
41 MU6 Water saving kits in hotels: Hotels receive subsidies of 20 % of the cost of water saving devices  
42 in their rooms. A distinction is made between hotels with two stars or less, and luxury hotels of three  
43 stars or more, according to the quality of the water saving devices installed. The uptake rate is  
44 assumed to be high (75 %) due to the benefit generated by water savings.  
45

46  
47 MU7 Water audit in campsites: On a voluntary basis, a campsite can apply for a free water audit to  
48 reduce their leakages. The cost of such audit is fixed at 450 €, the campsite owner pays the cost of  
49 fixing the leakage. It is assumed that 50 % of campsites will volunteer, of which 60 % will reduce  
50 their leakages. The savings are estimated to be 25 % of the initial consumption.  
51

52  
53 MU8 Conversion to Mediterranean vegetation:  
54  
55  
56  
57  
58  
59  
60  
61  
62  
63  
64  
65

1  
2  
3  
4 Planting in public parks is modified to introduce vegetation adapted to drought. A design requiring  
5 less watering and more mineral cover or trees is developed allowing the soil to be protected against  
6 evaporation. Only the additional costs (compared to the classic design) are considered and these are  
7 estimated to be 8.30 €/m<sup>2</sup>. The savings are 50 % over the first three year and 100 % afterwards. Only  
8 10 % of the public parks apply this measure.  
9

10  
11 MU9 Replacement of irrigated lawns with artificial turf for sport grounds

12  
13 The existing football and rugby pitches are converted to artificial synthetic grass at a cost of 230 000€  
14 per field. Only 20 % of the investment cost is subsidized by the public authority and 75% of the fields  
15 are converted. The life span of the field is 10 years.  
16  
17  
18

19 MA1 Modernising gravity irrigation: The measure corresponds to the modernization of gravity-  
20 irrigated systems located upstream in the river basin. The management of the irrigation channel is  
21 improved, and pumping stations are built along the channel to irrigate areas of 150 to 300 ha. This is  
22 linked to conversion to sprinkler irrigation. For the distribution system, the investment costs are  
23 assumed to be 6500 € per hectare, with a life spanof 40 years. Maintenance costs are assumed to be 1  
24 % per year and the energy cost, 30€/ha.  
25  
26  
27

28 MA2 Efficiency improvement in pressurized irrigation: The second measure is the development of  
29 drip-feed irrigation in the downstream part of the river basin, where piped distribution networks are  
30 already installed (therefore, a zero cost is associated with the distribution network). The investment  
31 cost is defined as 2000€/ha for a life span of 10 years, linked to operation and maintenance cost of  
32 78€/ha. The efficiency associated with the drip-feed irrigation remains at 0.9. The annualized cost of  
33 this measure is 325 €/ha.  
34  
35  
36  
37  
38  
39  
40  
41  
42  
43  
44  
45  
46  
47  
48  
49  
50  
51  
52  
53  
54  
55  
56  
57  
58  
59  
60  
61  
62  
63  
64  
65

1  
2  
3  
4  
5  
6 **Appendix B: Optimisation models: objective functions and constraint equations**  
7  
8

9 B.1. Water resources optimisation model:  
10

11 **Objective function:**

12  
13 (Eq. B. 1) *Minimize*  $\Pi_D = \sum_t \sum_a Def_{a,t}^{T^*}$   
14

15 Where, t is the time step index (monthly); “a” is the index of the ADU, and  $Def_{a,t}^{T^*}$  is the deficit for  
16 ADU a at month t with a return period T\* lower than T.  
17

18 **Subject to:**

19  
20 B.2.1. Supply of demand:  
21

22 (Eq. B. 2)  $SU_{u,t} = DU_{u,t} \quad \forall u, t$

23 (Eq. B. 3)  $SA_{a,t} = DA_{a,t} - Def_{a,t}^T - Def_{a,t}^{T^*} \quad \forall a, t$   
24

25 Where SU and SA are the volume of water supplied at each time step to u and a respectively; DU and  
26 DA are the demand of the ADU “u” and ADA “a” at t respectively;  $Def_{a,t}^T$  is the variable allowing a 5-  
27 year deficit;  $Def_{a,t}^{T^*}$  is the variable accounting for the extra deficit over the allowed 5-year deficit one.  
28  
29  
30  
31

32 B.2.2. Deficit frequency constraint:  
33

34 (Eq. B. 4) If  $Def_{a,t}^T \geq 0$  then  $DC_{yr} = 1$  else  $DC_{yr}=0$

35 (Eq. B. 5)  $\sum_{yr} DC_{yr} / N \leq 1/T$   
36

37  
38 Where DC is the annual deficit indicator of the year yr; N is the total number of years, and T is the  
39 return period fixed by the legislation for an acceptable deficit.  
40  
41

42 B.2.3. Supply and resources balance:  
43

44 (Eq. B. 6)  $V_{t,n} = V_{t-1,n} + I_{t,n} + D_{t,n} - SU_{t,n} - SA_{t,n} + R_{t,n} - E_{t,n} \quad \forall t, n$   
45

46  
47 Where n is the number of indices of the node; I is the monthly inflow at node n; D is the discharge  
48 from n; Vis the volume of the reservoir; R is the volume released from the reservoir (only reservoir at  
49 n1 else V=0 and R=0, at t=0 with set  $V=V_0=19.7 \text{ Mm}^3$ ).  
50  
51  
52

53 B.2.4. Environmental flow constraints:  
54

55 (Eq. B. 7)  $D_{t,n} \geq E_{t,n} \quad \forall t, n$   
56

57 Where E is the level of the in-stream environmental flow requirements at n.  
58  
59

60 B.2.5. Reservoir constraint:  
61

1  
2  
3  
4  
5 (Eq. B. 8)  $V_{max,t} \geq V_{t,n1} \geq V_{min} \forall t$   
6

7 Where  $V_{min}$  and  $V_{max}$  are the minimum and maximum volume of the reservoir at  $n1$ .

8  
9 **B.2.6. Return:**

10 (Eq. B. 9)  $R_{n,t} = \sum_u SU_{u,t} \times MC_{RU}_{u,n} + \sum_a SA_{a,t} \times MC_{RA}_{a,n} \quad \forall t, n$   
11  
12

13 Where  $MC_{RU}$  is the connectivity matrix connecting the return from a supply  $SU$  of an  $UDU$  to a  
14 node  $n$  (respectively  $ADU$ ).  
15  
16

17  
18 **B.2.7. Evaporation from the reservoir**

19 (Eq. B. 10)  $A_{t,n} = a \times V_{t,n} + b \quad \forall t, n$

20 (Eq. B. 11)  $EV_{t,n} = \frac{A_{t,n} + A_{t-1,n}}{2} \times \frac{ER_{t,n}}{1000} \quad \forall t, n$   
21  
22

23 Where  $a$  and  $b$  are two parameters defined by linear regression;  $A$  is a positive variable presenting the  
24 area of the reservoir (in  $km^2$ ) calculated from the Volume  $V$  of the reservoir;  $ER$  is the monthly  
25 Evaporation Rate defined in  $mm$  and therefore divided by  $1000$  to calculate the evaporation in  $Mm^3$   
26 directly.  
27  
28  
29  
30

31 **B.2. Least-cost river basin optimisation model:**  
32

33 The precedent equation are either maintained or modified as indicated below.  
34  
35  
36

37 ***Objective function:***  
38

39 (Eq. B. 12) Minimise  $\Pi = \Pi_C + M \times \Pi_D$   
40  
41

42 Where:  $\Pi_D$  is defined in Eq B. 1;  $M$  is a very large positive number, higher than the sum of the cost of  
43 all the other measures;  
44

45 (Eq. B. 13)  $\Pi_C = \sum_m A_m \times C_m + \sum_t \sum_m V_{m,t} \times VC_{m,t} / N$   
46  
47

48 Where,  $m$  is the index of the measures;  $A$  the activation binary variable;  $C$  the equivalent annual  
49 fixed cost of the measure;  $V$  the volume of water coming from the measures (only for ground  
50 water and desalination projects);  $VC$  the variable cost of the measures proportional to the  
51 volume. (The equation below presents a detailed version of this equation)  
52  
53

54 (Eq. B. 14)  $\Pi_C = \sum_{ma} AA_{ma} \times CA_{ma} + \sum_{mu} AU_{mu} \times CU_{mu} + \sum_{mgw} AGW_{gw} \times CGW_{gw} +$   
55  $\sum_{mds} ADS_{mds} \times CDS_{mds} + \sum_t \sum_{mgw} VGW_{gw,t} \times VCGW_{gw} + \sum_t \sum_{mds} VDS_{mds,t} \times$   
56  $VCDS_{mds}$   
57

58 Where,  $mu$ ,  $ma$ ,  $mgw$  and  $mds$  are indices of the measures of urban or agricultural demand,  
59 groundwater or desalination project respectively;  $t$  is time step (monthly) index;  $AA$ ,  $AU$ ,  $AGW$ ,  $ADS$   
60  
61  
62  
63  
64  
65

are binary activation variables of the measures mu, ma, mgw and mds; CU, CA, CGW, CDS are fixed equivalent annual cost (€) of mu, ma, gw, mds respectively; VGW and VDS are the volume of water in Mm<sup>3</sup>/month of the measure mgw and mds respectively; VCGW and VCDS are the variable costs of the measures gw and mds in €/Mm<sup>3</sup>/month divided by the total number of year N of the optimisation.

**Subject to:**

B.2.1. Demand and supply side measures

$$(Eq. B. 15) \quad SU_{t,u} = DU_{t,u} - \sum_{mu} AU_{mu} \times VU_{mu,t} \times CM_{U\_MU}_{mu,u} - \sum_{mgw} VGW_{gw,t} \times CM_{GW\_U}_{mgw,u} - \sum_{mds} VDS_{mds,t} \times CM_{DS\_U}_{mds,u} \quad \forall t, u$$

$$(Eq. B. 16) \quad SA_{t,a} = DA_{t,a} - \sum_{ma} AA_{ma} \times VA_{ma,t} \times CM_{A\_MA}_{ma,a} - Def_{a,t}^T - Def_{a,t}^{T*} \quad \forall t, a$$

Where SU and SA are the supply of u (a respectively) after the activation of the measures; VU and VA are water saving (Mm<sup>3</sup>/month) for mu or ma respectively; CM\_U\_MU is a Connectivity Matrix between the “mu” and the demand “u” (Respectively CM\_A\_MA); CM\_GW\_U: Connectivity Matrix between the measures “mgw” and the demand “u”, Respectively CM\_DS\_U.

B.2.2. Desalination measures:

Capacity and activation constraint: limits the capacity of the desalination plant and the availability of water to connectable UDUs.

$$(Eq. B. 17) \quad \sum_u VDS_{mds,t} \times CM_{DS\_U}_{mds,u} \leq ADS_{mds} \times CapDS_{mds} \quad \forall t, mds$$

Where CapDS is the maximum capacity of a desalination plant mds.

B.2.3. Groundwater measures:

Capacity and activation constraint: limits the capacity of the groundwater project and the availability of water to connectable UDUs.

$$(Eq. B. 18) \quad \sum_{mgw} VGW_{mgw,t} \times CM_{MGW\_GW} \leq AGW_{gw} \times CapGW_{gw} \quad \forall t, gw$$

Where CapGW is the maximum capacity of a groundwater project gw.

B.2.4. Exclusivity constraint: ensures the mutual exclusivity of groundwater projects

$$(Eq. B. 19) \quad \sum_{gw} AGW_{gw} \times MC\_Excl\_GW\_GW \leq 1$$



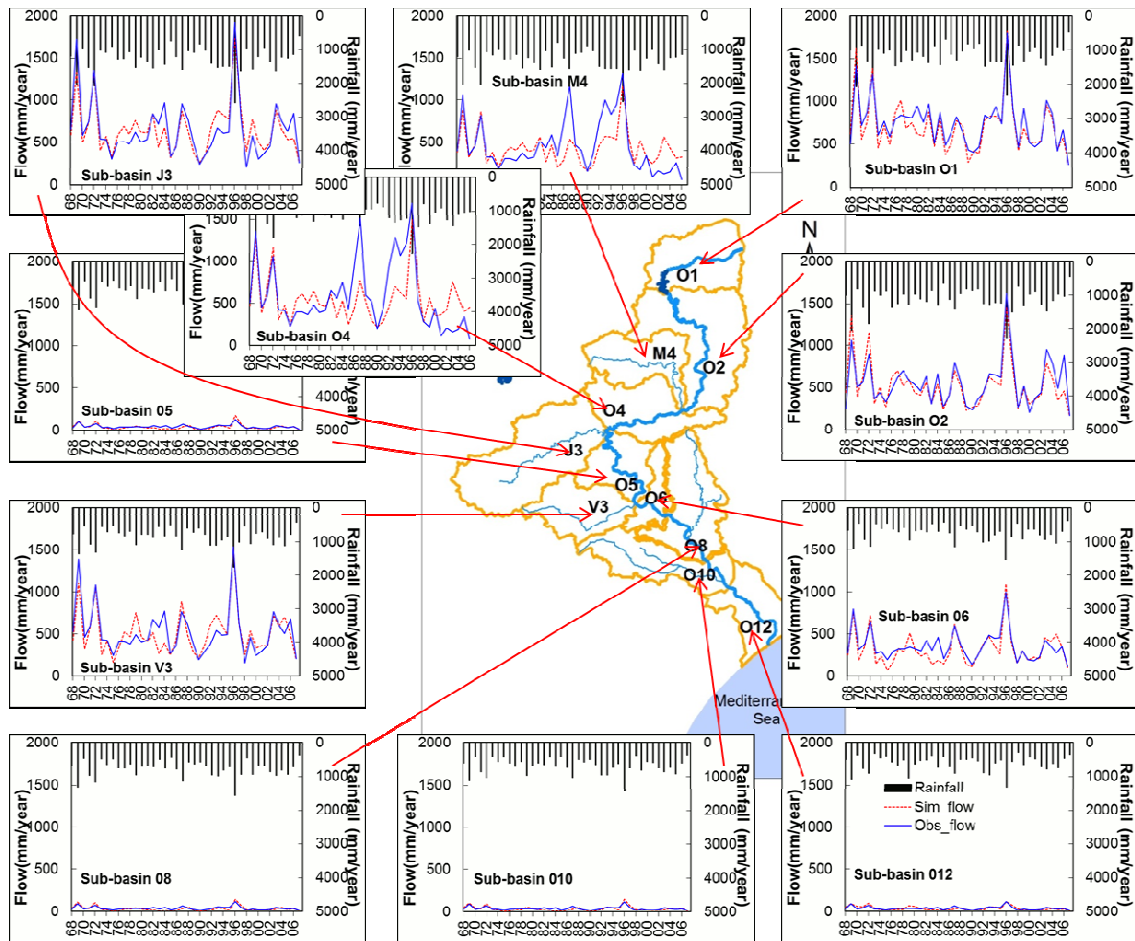
1  
2  
3  
4  
5  
6  
7  
8  
9  
10  
11  
12  
13  
14  
15  
16  
17  
18  
19  
20  
21  
22  
23  
24  
25  
26  
27  
28  
29  
30  
31  
32  
33  
34  
35  
36  
37  
38  
39  
40  
41  
42  
43  
44  
45  
46  
47  
48  
49  
50  
51  
52  
53  
54  
55  
56  
57  
58  
59  
60  
61  
62  
63  
64  
65

Where  $MC\_Excl\_GW\_GW$  is a matrix ensuring the mutual exclusivity of groundwater projects.

1  
2  
3  
4  
5 **Appendix C: Result of the calibration and validation of the hydrological model on the 11 sub-river**  
6 **basins of the Orb river basin.**

7  
8 The results of the validation and calibration of the hydrological model indicate variable calibration and  
9 validation quality (Table A and Figure A) that were considered good enough overall to be able to use  
10 the model for climate change impact studies. On the one hand, the difference between simulation and  
11 observation is due in part to some inconsistency of the natural flow restoration. Water demands to  
12 meet urban and agricultural supply are considered accurate enough at the monthly time-step to be  
13 added to observed river discharges. On the other hand, the difference could be also partially due to  
14 surface water seepages that recharge the calcareous aquifers further downstream in the basin. Indeed,  
15 the statistics indicating the poorest performance in Table A are obtained for the sub-basins, where  
16 these surface-groundwater interactions are probably the cause of the significantly lower specific river  
17 discharges (O5, O8, O10 and O12). This is linked to the coarse description of the surface-groundwater  
18 interactions due to the lack of relevant data in such a complicated geological context. Applying models  
19 able to simulate groundwater dynamics or stream-aquifer interactions should improve the quality of  
20 the modelling. However, this raises the need to acquire new data particularly in order to quantify the  
21 part of the river flow that disappears underground in the sink holes specific to limestone regions.

22  
23 Finally, the validated models for each of the sub-basins were used to simulate the natural river  
24 discharge at their respective outlets, using the historical climate data for the baseline period (1971-  
25 2000) and inputs from the downscaled ARPEGE climate scenario for the future period (2046-2065).  
26 The obtained discharge time series were then integrated in the water management model constructed at  
27 river basin scale.  
28  
29  
30  
31  
32  
33  
34  
35  
36  
37  
38  
39  
40  
41  
42  
43  
44  
45  
46  
47  
48  
49  
50  
51  
52  
53  
54  
55  
56  
57  
58  
59  
60  
61  
62  
63  
64  
65



**Figure A Comparison of simulated and observed annual flow discharges and rainfall at the 11 sub-river basin from 1968 to 2007. (The model is run at the monthly scale but only annual data are represented)**

Sub-basin	O1	O2	M4	O4	J3	O5	V3	O6	O8	O10	O12
<b>Warm up</b>											
<b>1968-1969</b>											
<b>Calibration</b>	<b>1970-2001</b>		<b>1970-1992</b>			<b>1970-2001</b>					
<b>Nash (Q)</b>	0.86	0.89	0.75	0.78	0.85	0.85	0.80	0.72	0.55	0.46	0.36
<b>RMSE (mm)</b>	23.8	19.8	20.2	24.0	28.2	28.2	26.1	19.4	2.8	3.1	3.4
<b>Validation</b>	<b>2002-2007</b>		<b>1993-1995</b>			<b>2002-2007</b>					
<b>Nash (Q)</b>	0.93	0.80	0.47	0.54	0.80	0.72	0.78	0.40	0.69	0.58	0.40
<b>RMSE (mm)</b>	16.5	29.3	42.1	50.5	29.8	1.8	25.5	20.8	1.7	2.0	2.4

**Table A Calibration and validation performances of the hydrological model by sub-basins.**

1  
2  
3  
4 *Appendix D: Demand assumption descriptions*  
5  
6

7 Future urban demand scenario:  
8

9 The estimation of the future urban demand for domestic water supply relies on the following main  
10 components: the demographic growth, the price of water, climate change or urban water savings. The  
11 main assumption presented in section 3.2 and table 2 are further detailed below. More information can  
12 be consulted in the report: Vernier, M. and Rinaudo JD (2012) Scénarios d'évolution de la demande en  
13 eau potable à l'horizon 2030 dans l'Ouest Hérault. Rapport BRGM/RP-61317-FR. BRGM, Orléans,  
14 France. 51 pp <http://infoterre.brgm.fr/rapports/RP-61317-FR.pdf> (In French)  
15  
16  
17  
18  
19

20 *Demographic growth:*

21 Between 1990 and 2007, the average demographic growth rate in the French region Languedoc-  
22 Roussillon, where is located the Orb river basin, was 1.13%, the highest in France (0.52 % in average).  
23 The French National Institute of Statistics and Economic Studies (INSEE, model Omphale) projected  
24 that this growth rate will continue until 2030 even if it will get closer to the other regions. The final  
25 demographic growth rate has been established at the “living area” scale (group of municipalities  
26 sharing resources, “basin de vie”) to harmonize local dynamics (1% in average).  
27  
28  
29  
30  
31

32 *Water price:*

33 The current trend in an increase of the price of water (volumetric part) is assumed to continue giving  
34 the aging of infrastructures and the need to finance their replacement, but as well due to the  
35 strengthening of the environmental and health legislation on the supply of water. From 2004 to 2008,  
36 the price of water has increased by 3.3 % per year, whereas the consumer price index increased by 1.9  
37 % per year. The price of water has then increased faster than inflation at a rate of 1.4%. By projecting  
38 this rate, the increase in water price in 2030 has been established at 30%. This increase is expected to  
39 act as an incentive to decrease household water consumption and is taken into account in the  
40 econometric model (section 2.2.1).  
41  
42  
43  
44  
45  
46  
47

48 *Climate change impact:*

49 The increase in maximal temperature (+ 1.5 to 2 °C in annual average) is expected to contribute to the  
50 increase in household water demand by increasing some outdoor water uses (swimming pool  
51 evaporation, garden irrigation) and indoor uses (showers). In the absence of further data about the  
52 magnitude of this increase on the study area, we took the 2003 summer heatwave consumption as a  
53 first proxy to estimate the impact of climate change on urban water demand. During this year, the  
54 water consumption increase by 13 % in comparison to the 6 precedent years with an increase in  
55  
56  
57  
58  
59  
60  
61  
62  
63  
64  
65

1  
2  
3  
4 maximum temperature of more than 4 degree (+ 20 % in summer). Therefore we assume an increase in  
5 the annual average water consumption of 6.5% and of 10 % in summer.  
6  
7

8  
9 *Water savings:*

10 Between 2004 and 2008, household water consumption in France has decreased by 2 % per year and  
11 per habitant to reach 151 liter per capita per day. The decrease corresponds to a change in the tendency  
12 until 2004, when water demand increased by 1 % per year per habitant. Over the planning horizon, if  
13 we assume that this new trend will continue this could lead to a decrease of 14 % in water  
14 consumption. The price increase could explain up to a fifth of this increase (given the econometric  
15 model developed), the rest being due to technological improvement of water devices and voluntary  
16 water savings. If we deduct as well the decrease in water consumption due to the decrease in the  
17 number of people per household (from 2.2 to 2 people per household between 2008 and 2030), the  
18 water savings due to technological change and voluntary water savings are estimated to 10%.  
19  
20  
21  
22  
23  
24

25  
26 Other non-domestic water consumptions increases have been taken as proportional to the population.  
27 The efficiency of the water network distribution has been assumed as constant, one of the measures of  
28 adaptation being to improve this efficiency.  
29  
30

31  
32 *Future agricultural demand scenario:*  
33

34  
35 The hypotheses underlying the definition of the agricultural demand scenario rely on the consultation  
36 of experts and grey literature at the local regional and national scale. Future cultivated and irrigated  
37 areas have been assessed in the case study area to build up a coherent development scenario for the  
38 river basin. This scenario assumes an increase in irrigated area by a factor of 4, mainly due to the  
39 development of irrigated vineyard from the current 3 300 hectares to more than 17 000 hectares.  
40 However, this increase relies on assumptions on the availability of water resources, public subsidies  
41 and land use planning. Clearly, this scenario represents the development wanted by the agricultural  
42 sector without considering the limitations of water resources. The possibility of such development and  
43 its cost in terms of adaptation is discussed in the rest of the paper as a trade-offs between the cost of  
44 the programme of measures and the level of irrigated agriculture (section 4.4.1).  
45  
46  
47  
48  
49  
50

51  
52 More information is available on the report Maton M., Girard, C. and Rinaudo, J.D., 2012. Evolution  
53 des besoins en eau d'irrigation à l'horizon 2030 dans l'Ouest de l'Hérault Rapport BRGM- RP - 61323  
54 - FR. <http://infoterre.brgm.fr/rapports/RP-61323-FR.pdf> (In French)  
55  
56  
57  
58  
59  
60  
61  
62  
63  
64  
65

Irrigated crop	Area in ha		
	2006	2030	Variation
Cereals	729	875	20%
Oil seeds and protein plants	339	407	20%
Fodder	242	290	20%
Market gardening	1003	2007	100%
Orchards	473	402	-15%
<i>Including olive trees</i>	100	237	137%
Other	166	52	-69%
Irrigated vineyard	3367	17757	427%
<b>Total irrigated</b>	<b>6420</b>	<b>22027</b>	<b>243%</b>

Table A Assumptions on the change in irrigated crop area in the orb river basin

## 8. References

- AERMC (Agence de l'Eau Rhône Corse Méditerranée), 2009. Schéma directeur d'aménagement et de gestion des eaux du bassin Rhône-Méditerranée. Vers le bon état des milieux aquatiques. Agence de l'Eau Rhône, Méditerranée, Corse. [http://www.rhone-mediterranee.eaufrance.fr/docs/dce/sdage/docs-officiels/BD/RM\\_Sdage\\_BD.pdf](http://www.rhone-mediterranee.eaufrance.fr/docs/dce/sdage/docs-officiels/BD/RM_Sdage_BD.pdf) (In French)
- Allen, R.G., Pereira, L.S., Raes, D., Smith, M., 1998. Crop Evapotranspiration—Guidelines for computing Crop Water Requirements. FAO Irrigation and drainage paper 56. Rome, Italy: Food and Agriculture Organization of the United Nations. ISBN 92-5-1042
- Andreu, J., Capilla, J., Sanchís, E., 1996. AQUATOOL, a generalized decision-support system for water-resources planning and operational management. *Journal of Hydrology* 177, 269-291.
- Arnell, N.W., 2004. Climate change and global water resources: SRES emissions and socio-economic scenarios. *Global Environ. Change* 14, 31-52.
- Barsugli, J., Vogel, J., Kaatz, L., Smith, J., Waage, M., Anderson, C., 2012. Two Faces of Uncertainty: Climate Science and Water Utility Planning Methods. *J. Water Resour. Plann. Manage.* 138, 389-395.
- Bates, B.C., Z.W. Kundzewicz, S. Wu and J.P. Palutikof, 2008. Climate Change and Water. Technical Paper of the Intergovernmental Panel on Climate Change, IPCC Secretariat, Geneva, 210 pp.
- Bauman, D.D., Boland, J.J., Haneman, W.M., 1998. Urban water demand management and planning. McGraw-Hill, New-York.
- Brown C., Wilby R. L. ,2012. An alternate approach to assessing climate risks. *Eos* 93, 401-402.
- Brown, C. Ghile, Y . Laverty, M and Li, K, 2012. Decision scaling: Linking bottom-up vulnerability analysis with climate projections in the water sector WATER RESOURCES RESEARCH, 48, W09537, doi:10.1029/2011WR011212, 2012

1  
2  
3  
4 Caballero, Y., S. Voirin-Morel, F. Habets, J. Noilhan, P. LeMoigne, A. Lehenaff, and A. Boone, 2007.  
5 Hydrological sensitivity of the Adour-Garonne river basin to climate change, *Water Resour. Res.*,  
6 43, W07448, doi:10.1029/2005WR004192.

7  
8 Caballero Y. and Girard C., 2012. Impact du changement climatique sur la ressource en eau du  
9 bassin versant de l'Orb. Rapport BRGM/RP-61319-FR. 40 p., 16 ill.  
10 <http://infoterre.brgm.fr/rapports/RP-61319-FR.pdf> (In French)

11  
12 Chazot, S., 2011. Perspectives d'évolution de la gestion des volumes stockés dans le barrage des  
13 Monts d'Orb. Rapport final, Novembre 2011, BRL Ingénierie. [http://www.vallees-orb-libron.fr/wp-](http://www.vallees-orb-libron.fr/wp-content/uploads/2012/12/etude-gestion-Monts-Orb-Rapport-V16.pdf)  
14 [content/uploads/2012/12/etude-gestion-Monts-Orb-Rapport-V16.pdf](http://www.vallees-orb-libron.fr/wp-content/uploads/2012/12/etude-gestion-Monts-Orb-Rapport-V16.pdf) (In French)

15  
16 De Roo, A., Burek, P., Gentile, A., Udias, A., Bouraoui, F., Aloe, A. Bianchi, A. La Notte, A., Kuik,  
17 O., Elorza Tenreiro, J., Vandecasteele, I., Mubareka, S., Baranzelli, C., Van Der Perk, M., Lavallo,  
18 C., Bidoglio, G., 2012. A multi-criteria optimisation of scenarios for the protection of water  
19 resources in Europe, Support to the EU Blueprint to Safeguard Europe's Waters, JRC Scientific and  
20 policy report, European Commission.  
21 <http://publications.jrc.ec.europa.eu/repository/handle/111111111/26672>

22  
23 Draper, A. J., M. W. Jenkins, K. W. Kirby, J. R. Lund, and R. E. Howitt, 2003. Economic engineering  
24 optimization for California water management, *J. Water Resour. Plann. Manage.*, 129(3), 155-164

25  
26 EC (European Commission), 2012. A Blueprint to Safeguard Europe's Water Resources, European  
27 Commission, Brussels, 14.11.2012, COM(2012) 673 final.

28  
29 Ejeta, M.Z., and Mays, L.W., 2005, Regional Water supply planning and capacity expansion models,  
30 in: Larry W Mays, 2005, *Water Resource Systems Management Tools*. McGraw-Hill. Available  
31 from: [http://www.public.asu.edu/~lwadays/research\\_paper.htm](http://www.public.asu.edu/~lwadays/research_paper.htm)

32  
33 Ghaffour, N., Missimer, T.M., Amy, G.L., 2013. Technical review and evaluation of the economics of  
34 water desalination: Current and future challenges for better water supply sustainability.  
35 *Desalination* 309, 197-207.

36  
37 Giorgi, F., Lionello, P., 2008. Climate change projections for the Mediterranean region. *Global*  
38 *Planet. Change* 63, 90-104.

39  
40 Gippel, C., J., and Stewardson, J., 1998. Use of wetted perimeter in defining minimum  
41 environmental flows, *Regulated Rivers: Research & Management*, 14, 53-67.

42  
43 Hamilton, S. H., El Sawah, S., Guillaume, J.H. A., Jakeman, A.J., Pierce, S.A., 2015. Integrated  
44 assessment and modelling: Overview and synthesis of salient dimensions. *Environmental Modelling*  
45 *& Software*, 64, 215-229, doi:10.1016/j.envsoft.2014.12.005

46  
47 Harou, J.J., Pulido-Velazquez, M., Rosenberg, D.E., Medellín-Azuara, J., Lund, J.R., Howitt, R.E.,  
48 2009. Hydro-economic models: Concepts, design, applications, and future prospects. *Journal of*  
49 *Hydrology* 375, 627-643.

50  
51 Hashimoto, T., Stedinger, J.R., Loucks, D.P., 1982. Reliability, resiliency, and vulnerability criteria  
52 for water resource system performance evaluation. *Water Resour. Res.* 18, 14-20.

53  
54 Heinz, I., Pulido-Velazquez, M., Lund, J.R., Andreu, J., 2007. Hydro-economic modeling in river  
55 basin management: Implications and applications for the European water framework directive.  
56 *Water Resour. Manage.* 21, 1103-1125.

57  
58 Hoang, T., Maton, L. Caballero, Y. et Rinaudo J-D. 2012. Impact du changement climatique sur le  
59 besoin en eau d'irrigation dans l'Ouest de l'Hérault. Rapport Brgm RP-61311-FR. 36 pp (In French)

60  
61 Hunt, A., Watkiss, P., 2011. Climate change impacts and adaptation in cities: A review of the  
62 literature. *Clim. Change* 104, 13-49.

- 1  
2  
3  
4 Hurd, B.H., Coonrod, J., 2012. Hydro-economic consequences of climate change in the upper Rio  
5 Grande. *Climate Research* 53, 103-118.
- 6  
7 Jakeman, A.J., Letcher, R.A., 2003. Integrated assessment and modelling: Features, principles and  
8 examples for catchment management. *Environmental Modelling and Software* 18, 491-501.  
9 [http://dx.doi.org/10.1016/S1364-8152\(03\)00024-0](http://dx.doi.org/10.1016/S1364-8152(03)00024-0)
- 10  
11 Jeuland, M., and D. Whittington, 2014. Water resources planning under climate change: Assessing  
12 the robustness of real options for the Blue Nile, *Water Resour. Res.*, 50, 2086-2107,  
13 doi:10.1002/2013WR013705.
- 14  
15 Knutti, R., Furrer, R., Tebaldi, C., Cermak, J., Meehl, G.A., 2010. Challenges in combining  
16 projections from multiple climate models. *J. Clim.* 23, 2739-2758.
- 17  
18 Kragt, M.E.; Robson, B.J.; Macleod, C.J.A., 2013. Modellers' role in structuring integrative research  
19 projects. *Environmental Modelling and Software*, 2013, 39, 322-330
- 20  
21 Labadie, J.W., 2004. Optimal operation of multireservoir systems: State-of-the-art review. *J. Water*  
22 *Resour. Plann. Manage.* 130, 93-111.
- 23  
24 Lempert, R.J., Groves, D.G., 2010. Identifying and evaluating robust adaptive policy responses to  
25 climate change for water management agencies in the American west. *Technological Forecasting*  
26 *and Social Change* 77, 960-974.
- 27  
28 Lamouroux N., 2002. Estimhab: estimating in-stream habitat quality changes associated with river  
29 management. Shareware & User's guide, Cemagref, Lyon.  
30 <http://www.lyon.cemagref.fr/bea/lhq/lhq.html> .
- 31  
32 Letcher, R.A., Croke, B.F.W., Jakeman, A.J., 2007. Integrated assessment modelling for water  
33 resource allocation and management: A generalised conceptual framework. *Environmental*  
34 *Modelling and Software* 22, 733-742.
- 35  
36 Loucks, D. P., Stedinger, J. R., and Haith, D. A. 1981. *Water resources systems planning and*  
37 *analysis*. Englewood Cliffs, N.J.: Prentice-Hal.
- 38  
39 Loucks, D.P., 1997. Quantifying trends in system sustainability. *Hydrological Sciences Journal* 42,  
40 513-530.
- 41  
42 Madani, K., 2010. Game theory and water resources. *Journal of Hydrology* 381, 225-238.
- 43  
44 Mariotti, A., Zeng, N., Yoon, J.-., Artale, V., Navarra, A., Alpert, P., Li, L.Z.X., 2008. Mediterranean  
45 water cycle changes: Transition to drier 21st century conditions in observations and CMIP3  
46 simulations. *Environmental Research Letters* 3. DOI 10.1088/1748-9326/3/4/044001
- 47  
48 Martin-Carrasco, F., Garrote, L., Iglesias, A., Mediero, L., 2013. Diagnosing Causes of Water  
49 Scarcity in Complex Water Resources Systems and Identifying Risk Management Actions. *Water*  
50 *Resour. Manage.* 27, 1693-1705. DOI 10.1007/s11269-012-0081-6
- 51  
52 Maton M., Girard, C. and Rinaudo, J.D., 2012. Evolution des besoins en eau d'irrigation à l'horizon  
53 2030 dans l'Ouest de l'Hérault Rapport BRGM- RP - 61323 - FR.  
54 <http://infoterre.brgm.fr/rapports/RP-61323-FR.pdf> (In French)
- 55  
56 Matrosov, E.S., Padula, S., Harou, J.J. (2013) Selecting Portfolios of Water Supply and Demand  
57 Management Strategies Under Uncertainty-Contrasting Economic Optimisation and 'Robust Decision  
58 Making' Approaches, *Water Resources management* , 27(4), 1123 - 1148. 10.1007/s11269-012-  
59 0118-x.
- 60  
61  
62  
63  
64  
65



1  
2  
3  
4 MEEDDT (Ministère de l'écologie, de l'énergie, du développement durable et de l'aménagement du  
5 territoire), 2008. Circulaire du 30 juin 2008 relative à la résorption des déficits quantitatifs en  
6 matière de prélèvement d'eau et gestion collective des prélèvements d'irrigation NOR :  
7 DEVO0815432C, Bulletin officiel du Ministère de l'écologie, de l'énergie, du développement durable  
8 et de l'aménagement du territoire, Paris, 2008 (In French)

9  
10 Medellín-Azuara, J.; Harou, J. J.; Olivares, M. A.; Madani, K.; Lund, J. R.; Howitt, R. E.; Tanaka, S.  
11 K.; Jenkins, M. W.; Zhu, T. Adaptability and adaptations of California's water supply system to dry  
12 climate warming. *Clim. Change*, 2008, 87, 1, 75-90

13  
14 Mollinga, P.P., 2009. Towards the transdisciplinary engineer: Incorporating ecology, equity and  
15 democracy concerns into water professionals' attitudes, skills and knowledge. *Irrigation and  
16 Drainage* 58, S195-S204.

17  
18 Mouelhi, S., Michel, C., Perrin, C., Andréassian, V., 2006. Stepwise development of a two-  
19 parameter monthly water balance model. *Journal of Hydrology* 318, 200-214.  
20 doi:10.1016/j.jhydrol.2005.06.014

21  
22 Nash, J.E., and Sutcliffe, J.V., 1970. River flow forecasting through conceptual models, *J. Hydrol.*,  
23 10(3), 282-290.

24  
25 Newlin, B. D., M. W. Jenkins, J. R. Lund, and R. E. Howitt, 2002. Southern California water  
26 markets: Potential and limitations, *J. Water Resour. Plann. Manage.*, 128(1), 21-32.

27  
28 O'Laoghaire, D. T., and Himmelblau, D. M., 1974. Optimal expansion of a water resources system.  
29 — With 273 pp. New York and London: Academic Press. ISBN 0-12-525450-4.

30  
31 Pagé, C. and Terray, L., 2010. Nouvelles projections climatiques à échelle fine sur la France pour le  
32 21ème siècle : les scénarii SCRATCH2010. Technical Report TR/CMGC/10/58, SUC au CERFACS,  
33 URA CERFACS/CNRS No1875CS, Toulouse, France (<http://www.cerfacs.fr/~page/work/scratch/>).  
34 (In French)

35  
36 Poff, N.L., Allan, J.D., Bain, M.B., Karr, J.R., Prestegard, K.L., Richter, B.D., Sparks, R.E.,  
37 Stromberg, J.C., 1997. The natural flow regime: A paradigm for river conservation and restoration.  
38 *Bioscience* 47, 769-784.

39  
40 Pohl, C., 2005. Transdisciplinary collaboration in environmental research. *Futures* 37, 1159-1178.

41  
42 Postel S. Richter B., 2003. *Rivers for Life: Managing Water for People and Nature*. Island Press,  
43 Washington, DC.

44  
45 Pouget, L., Escaler, I., Guiu, R., Mc Ennis, S., Versini, P.-., 2012. Global Change adaptation in  
46 water resources management: The Water Change project. *Sci. Total Environ.* 440, 186-193.

47  
48 Pulido-Velazquez, M., Alvarez-Mendiola, E., Andreu, J., 2013. Design of efficient water pricing  
49 policies integrating basinwide resource opportunity costs. *J. Water Resour. Plann. Manage.* 139,  
50 583-592.

51  
52 Pulido-Velazquez, M., Andreu, J., Sahuquillo, A., Pulido-Velazquez, D., 2008. Hydro-economic river  
53 basin modelling: The application of a holistic surface-groundwater model to assess opportunity  
54 costs of water use in Spain. *Ecol. Econ.* 66, 51-65.

55  
56 Pulido-Velazquez, M., M. W. Jenkins, and J. R. Lund, 2004, Economic values for conjunctive use  
57 and water banking in southern California, *Water Resour. Res.*, 40, W03401,  
58 doi:10.1029/2003WR002626

59  
60 Pushpalatha, R., Perrin, C., Le Moine, N., Andréassian, V., 2012. A review of efficiency criteria  
61 suitable for evaluating low-flow simulations, *Journal of Hydrology* 420-421 171-182,  
62 doi:10.1016/j.jhydrol.2011.11.055

1  
2  
3  
4 Quevauviller,P.; Barceló,D.; Beniston,M.; Djordjevic,S.; Harding,R.J.; Iglesias,A.; Ludwig,R.;  
5 Navarra,A.;Navarro Ortega,A.; Mark,O.; Roson,R.; Sempere,D.; Stoffel,M.; van Lanen,H.A.J.;  
6 Werner,M.; 2012, Integration of research advances in modelling and monitoring in support of WFD  
7 river basin management planning in the context of climate change. *Sci.Total Environ.*, 440, 167-  
8 177  
9  
10 Refsgaard, J.C., van der Sluijs, J.P., Højberg, A.L., Vanrolleghem, P.A., 2007. Uncertainty in the  
11 environmental modelling process - A framework and guidance. *Environmental Modelling and*  
12 *Software* 22, 1543-1556. <http://dx.doi.org/10.1016/j.envsoft.2007.02.004>  
13  
14 Reuss, M., 2003. Is It Time to Resurrect the Harvard Water Program?, EDITORIAL , *J. Water*  
15 *Resour. Plann. Manage.*, 129, 5 , 357-360. EDITORIAL  
16  
17 Riegels, N., Pulido-Velazquez, M., Doulgeris, C., Sturm, V., Jensen, R., Møller, F., Bauer-Gottwein,  
18 P., 2013. Systems analysis approach to the design of efficient water pricing policies under the EU  
19 water framework directive. *J. Water Resour. Plann. Manage.* 139, 574-582.  
20  
21 Rinaudo, J.-., Neverre, N., Montginoul, M., 2012. Simulating the impact of pricing policies on  
22 residential water demand: A southern France case study. *Water Resour. Manage.* 26, 2057-2068.  
23  
24 Rinaudo, J.-D., Maton, L., Terrason, I., Chazot, S., Richard-Ferroudji, A., Caballero, Y., 2013a.  
25 Combining scenario workshops with modeling to assess future irrigation water demands. *Agric.*  
26 *Water Manage.* 130, 103-112.  
27  
28 Rinaudo, J-D, Noel, Y., Marchal, J.-P., Lamotte, C., 2013b. Evaluation du coût de mobilisation de  
29 nouvelles ressources en eau souterraine dans l'Ouest de l'Hérault. Rapport BRGM-RP- 61794-FR  
30 <http://infoterre.brgm.fr/rapports/RP-61794-FR.pdf> (In French)  
31  
32 Rosenthal, E., 2012. GAMS, A User's Guide Tutorial by Richard E. Rosenthal, GAMS Development  
33 Corporation, Washington, DC, USA.  
34  
35 Salas-Mélia, D., F. Chauvin, M. Déqué, H. Douville, J.F. Gueremy, P. Marquet, S. Planton, J.F.  
36 Royer and S. Tyteca, 2005. Description and validation of the CNRM-CM3 global coupled model,  
37 CNRM working note 103. [http://www.cnrm.meteo.fr/scenario2004/references\\_eng.html](http://www.cnrm.meteo.fr/scenario2004/references_eng.html) (accessed  
38 20/01/2014)  
39  
40 SMVO (Syndicat Mixte de la Vallée de l'Orb), 2013. Contrat de rivière Orb-Libron, 2011-2015,  
41 Dossier définitif, Dossier M001 8 03 039 / EV. [http://www.vallees-orb-libron.fr/wp-](http://www.vallees-orb-libron.fr/wp-content/uploads/2012/12/dossier-definitif-contrat-riviere-orb-libron-11-15.pdf)  
42 [content/uploads/2012/12/dossier-definitif-contrat-riviere-orb-libron-11-15.pdf](http://www.vallees-orb-libron.fr/wp-content/uploads/2012/12/dossier-definitif-contrat-riviere-orb-libron-11-15.pdf) (In French)  
43  
44 Tanaka,S.K., Zhu,T., Lund,J.R., Howitt,R.E., Jenkins,M.W., Pulido,M.A., Tauber,M., Ritzema, R.S.,  
45 Ferreira, I.C. Titre, 2006. Climate warming and water management adaptation for California,  
46 *Clim.Change*, 2006, 76, 3-4, 361-387  
47  
48 Thivet, G. and Fernandez, S., 2012. Water Demand Management: The Mediterranean Experience.  
49 Technical focus paper, Plan Bleu & Global Water Partnership,  
50 [http://planbleu.org/sites/default/files/publications/water\\_demand\\_management\\_plan\\_bleu\\_gwp.pdf](http://planbleu.org/sites/default/files/publications/water_demand_management_plan_bleu_gwp.pdf)  
51  
52 Vachala, S., 2008. Evaporation sur les retenus EDF du Sud de la France, Électricité De France.  
53 Division Technique Générale, Service ressources en eau.  
54  
55 Vernier, M. and Rinaudo JD (2012) Scénarios d'évolution de la demande en eau potable à l'horizon  
56 2030 dans l'Ouest Hérault. Rapport BRGM/RP-61317-FR. BRGM, Orléans, France. 51 pp  
57 <http://infoterre.brgm.fr/rapports/RP-61317-FR.pdf> (In French)  
58  
59 Vidal, J.-P, Martin, E., Franchistéguy, L., Baillon, M., Soubeyroux, J.-M, 2010. A 50-year high-  
60 resolution atmospheric reanalysis over France with the Safran system. *Int. J. Climatol.* 30, 1627-  
61 1644. doi:10.1002/joc.2003  
62  
63  
64  
65

1  
2  
3  
4  
5  
6  
7  
8  
9  
10  
11  
12  
13  
14  
15  
16  
17  
18  
19  
20  
21  
22  
23  
24  
25  
26  
27  
28  
29  
30  
31  
32  
33  
34  
35  
36  
37  
38  
39  
40  
41  
42  
43  
44  
45  
46  
47  
48  
49  
50  
51  
52  
53  
54  
55  
56  
57  
58  
59  
60  
61  
62  
63  
64  
65

Vier E. and Aigoui. F. 2011. Etude de définition des débits d'étiage de référence pour la mise en oeuvre d'une gestion quantitative de la ressource en eau dans le bassin de l'Orb. Rapport provisoire phases 1 et 2. Avril 2011. Syndicat mixte de la vallée de l'Orb. (In French).

Wilby, R.L., Dessai, S., 2010. Robust adaptation to climate change. *Weather* 65, 180-185. DOI: 10.1002/wea.543

Zhou, Y., Tol, R.S.J., 2005. Evaluating the costs of desalination and water transport. *Water Resour. Res.* 41, 1-10.

**Highlights:**

- An interdisciplinary modelling framework is presented to analyse the effects of global change on water resource systems at the basin scale.
- Present and future urban and agricultural water demands, as well as climate change scenario, are integrated into a river basin management model.
- Future supply and demand management measures are selected using least-cost optimisation.
- Trade-offs between the cost of adaptation measures, irrigated agriculture development, and environmental requirements are quantified.
- Insights to improved integrated water management at basin scale through interdisciplinary modelling are provided.

Figure 1

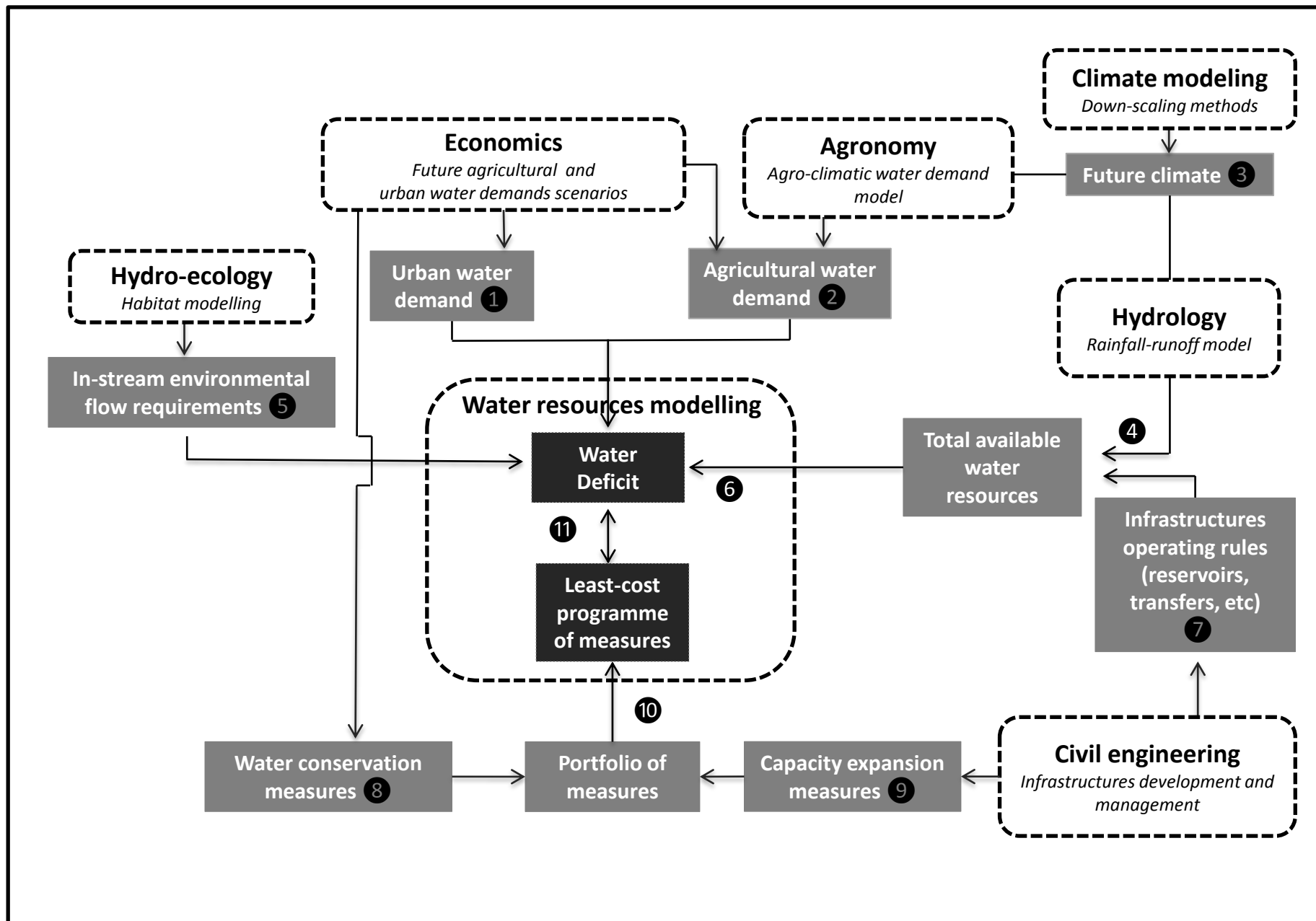


Figure 2

[Click here to download high resolution image](#)

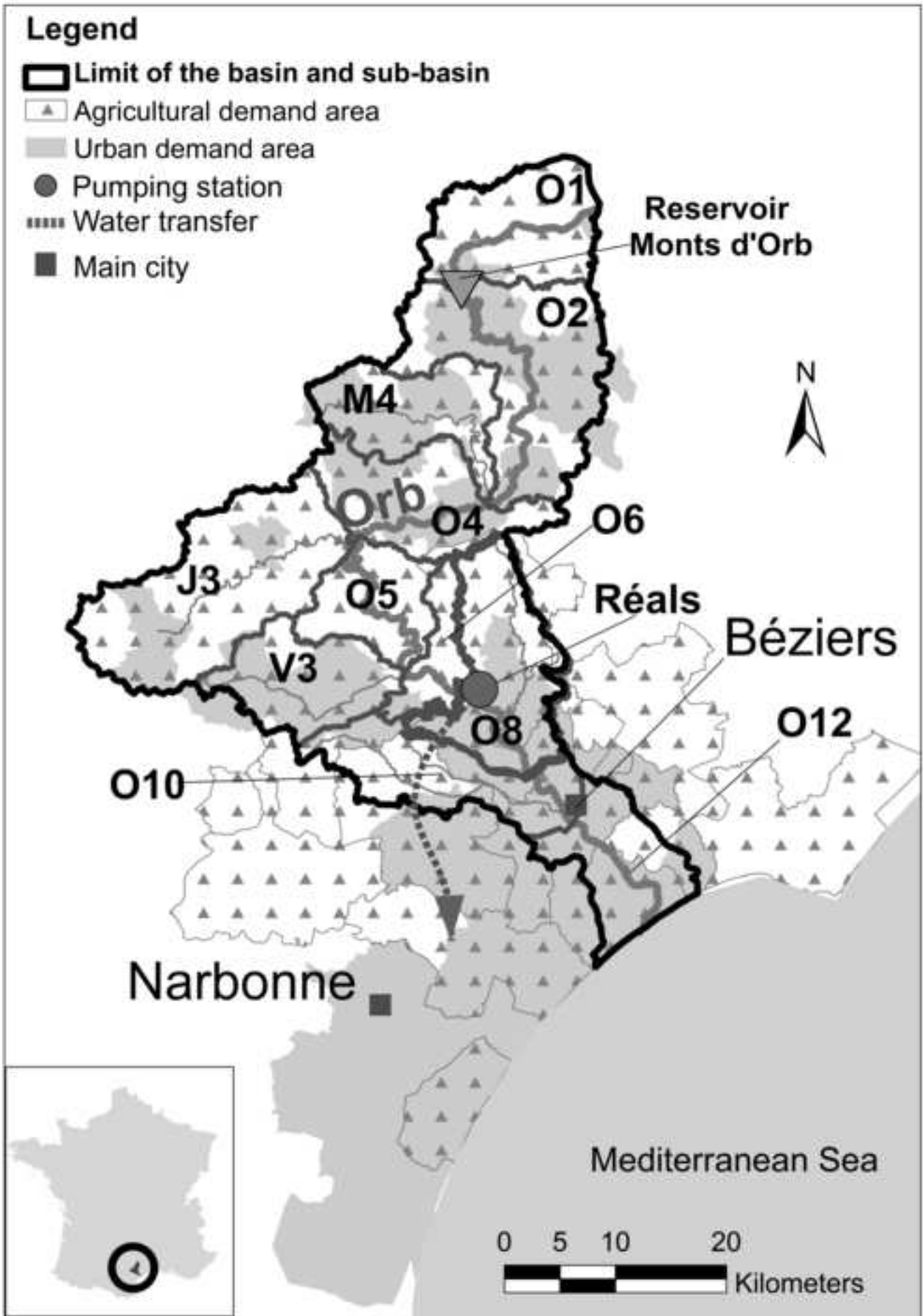


Figure 3

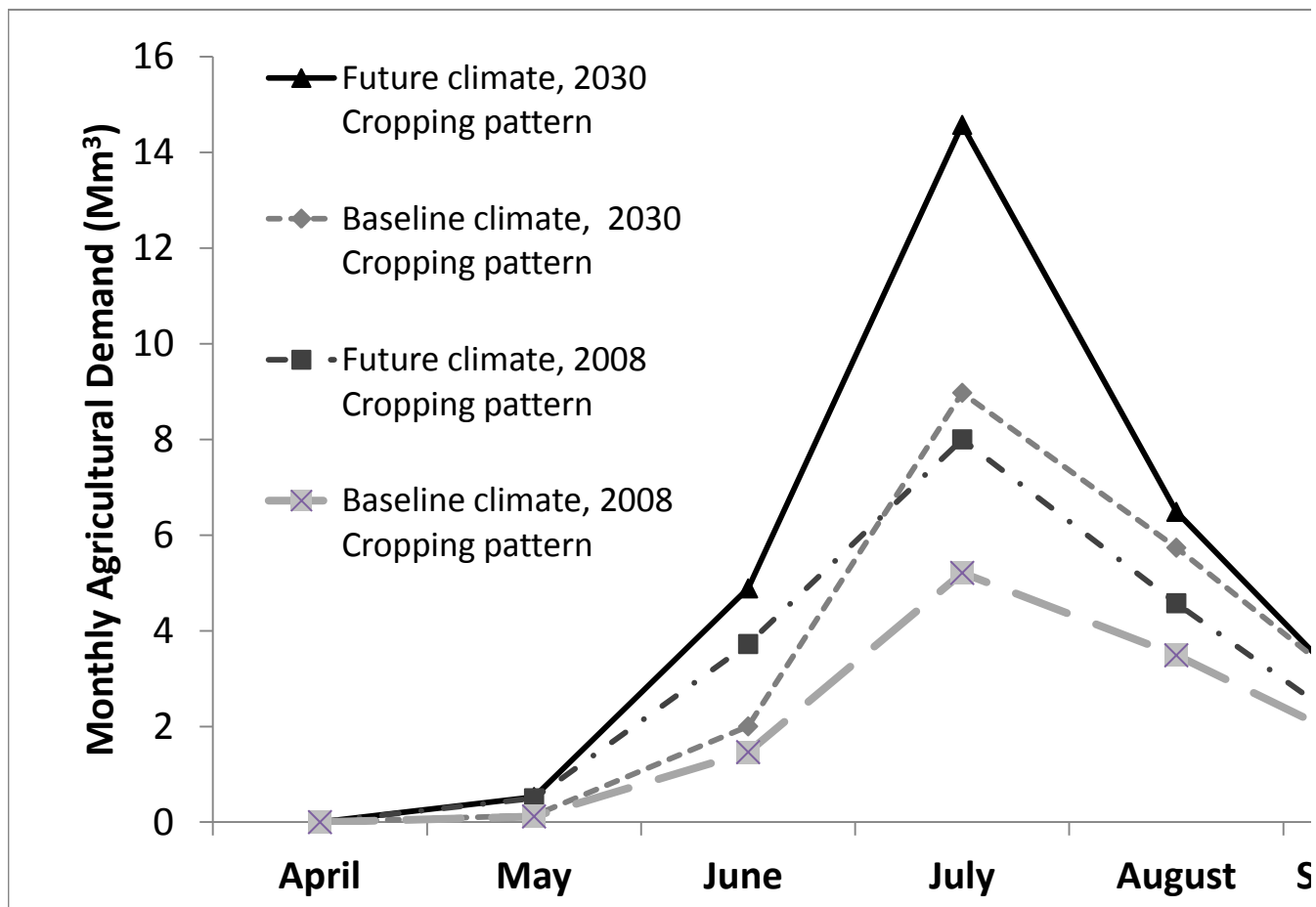


Figure 4

[Click here to download high resolution image](#)

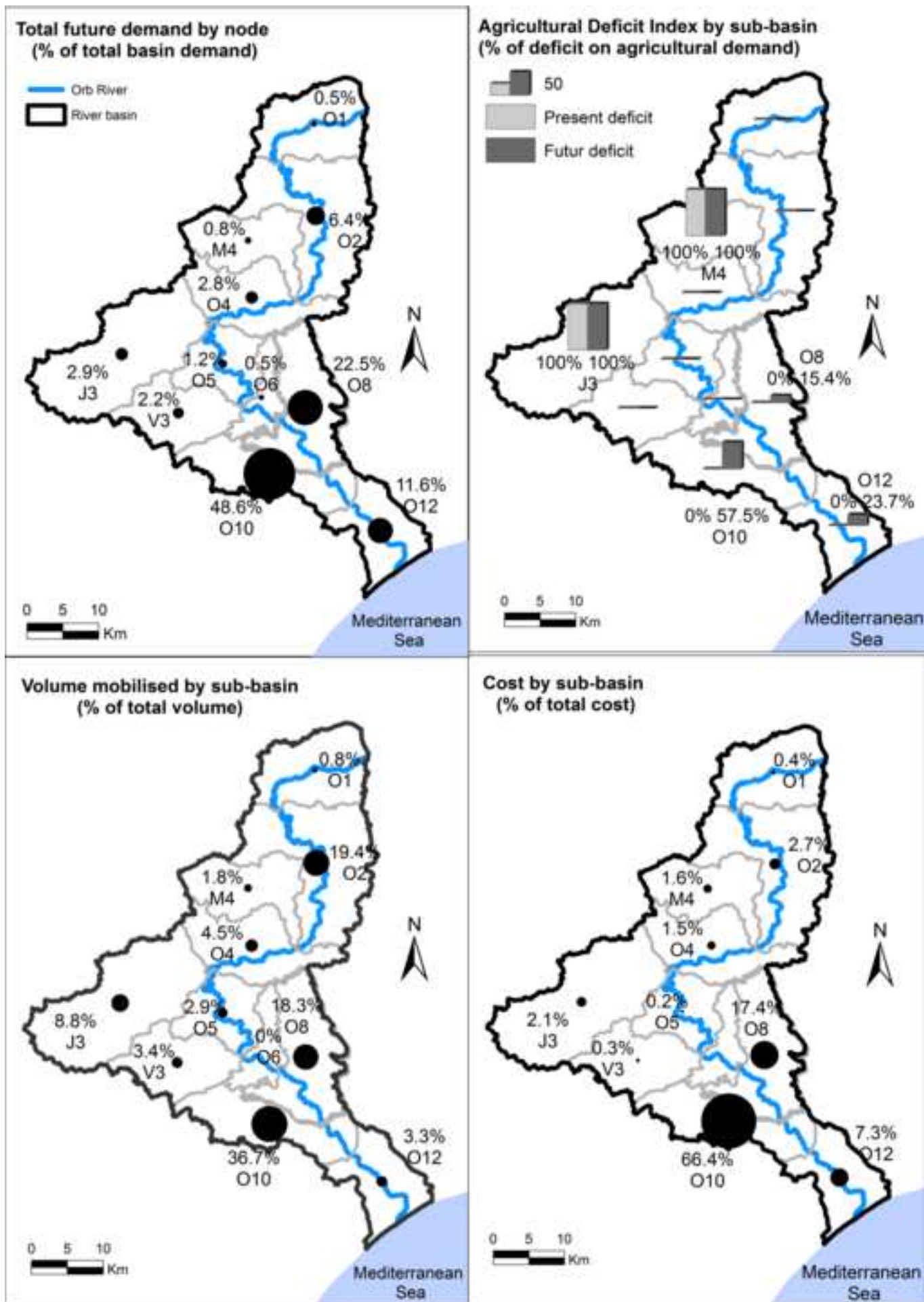




Figure 5

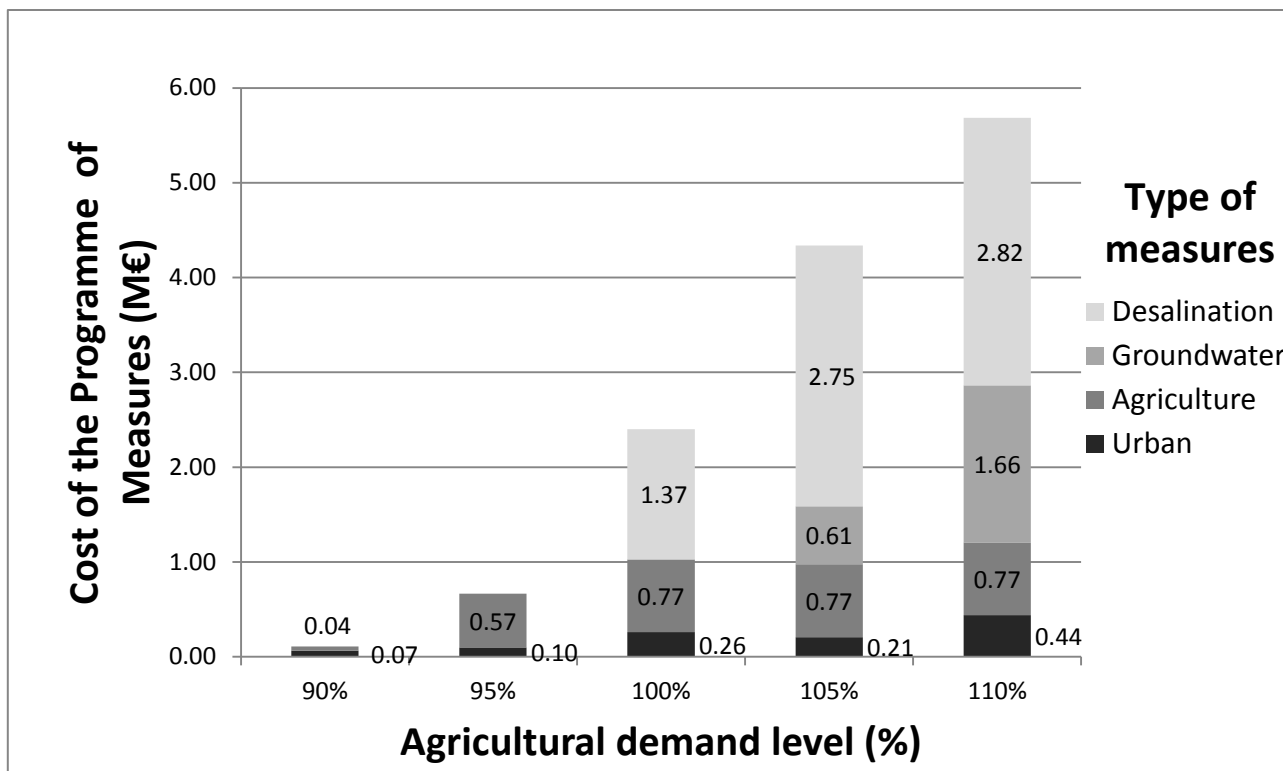


Figure 6

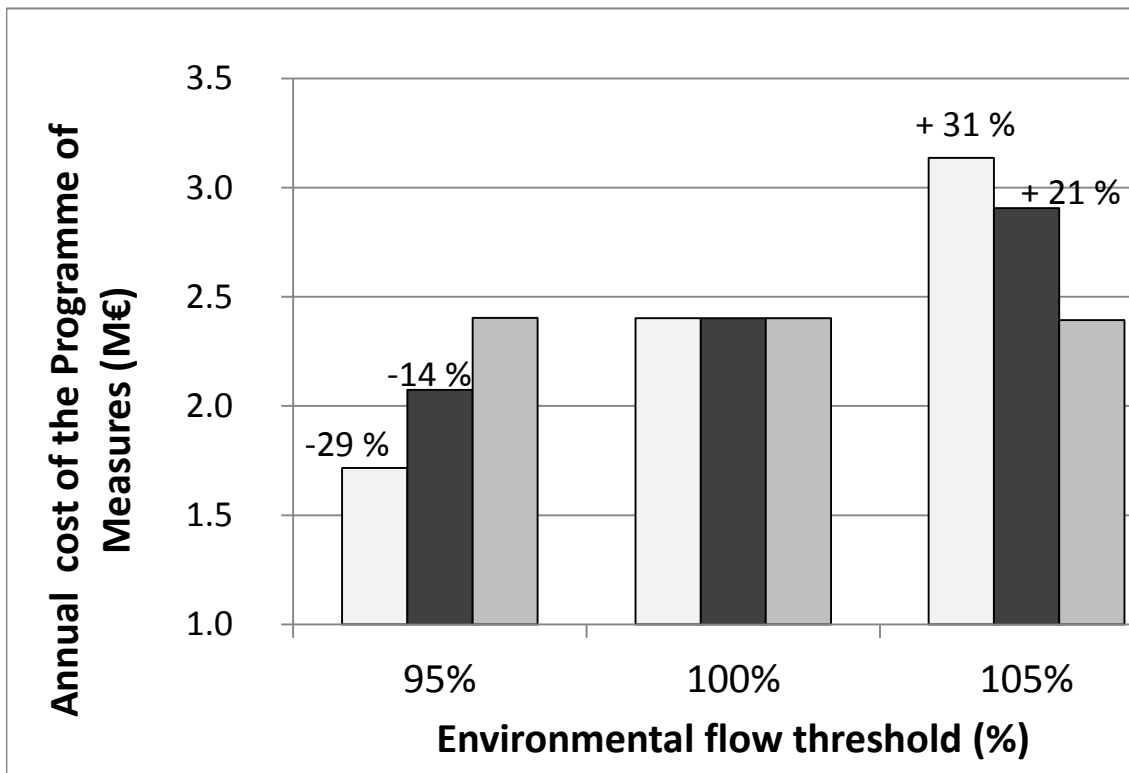
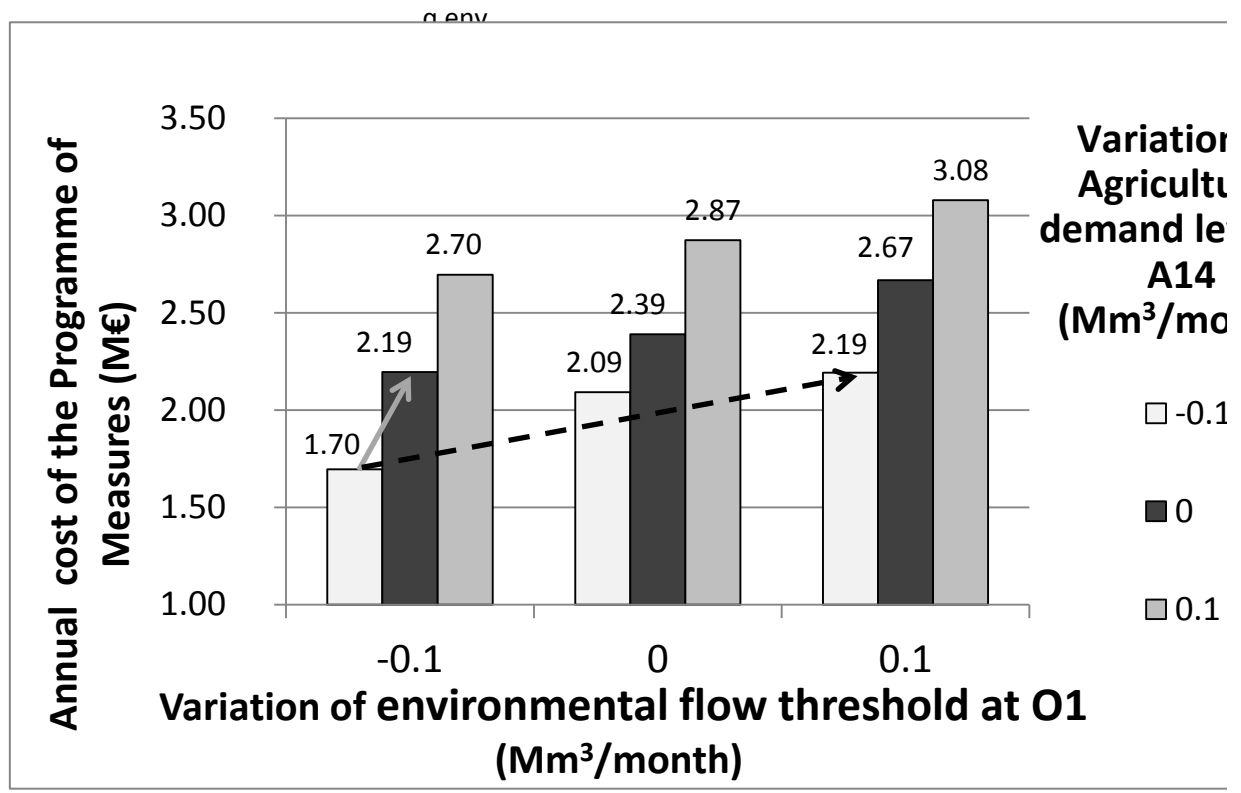


Figure 7



**Table 1**

Demand (Mm <sup>3</sup> )	Urban	Agricultural	Environmental	Total	Resources (Mm <sup>3</sup> )	Demand/resources (%)
<b>Baseline</b>	19.2	11.6	43.0	73.8	374 <sup>b</sup>	19.7 %
<b>Baseline summer<sup>a</sup></b>	7.8	10.8	14.5	33.1	55 <sup>b</sup>	60.2 %
<b>Future</b>	21.9	28.3	43.0	93.2	276 <sup>b</sup>	33.7 %
<b>Future summer</b>	8.9	27.1	14.5	50.5	40.4 <sup>b</sup>	125 %

a. The summer period corresponds to four months in the summer (mid-May to mid-September)

b. In this case, the resources are estimated for a dry year with a 5-year return period at the outflow of the basin

**Table 1: Annual and summer water balance of the Orb river basin baseline and future scenarios**

**Table 2**

<b>Demand</b>	<b>Urban</b>	<b>Agricultural</b>
<b>Main assumptions</b>	+ 30 % of water price - 10 % due to savings + 6.5 % due to climate change; Constant household incomes	25 % of the vineyard is irrigated (5% in 2008) + 100 % of market gardening - 50 % of orchards Constant irrigation efficiency

*Table 2 Main assumptions of the demand forecasting models and results at river-basin scale.*

**Table 3**

Sub-basin	O1	O3	M4	O4	J3	O5	V3	O6	O8	O10	O12	Basin	
<b>Baseline</b>													
<b>Low-Flow (Mm<sup>3</sup> per month)</b>	<b>(1971-2000)</b>	1.07	0.75	0.15	0.42	0.89	0.03	0.74	0.18	0.05	0.06	0.10	4.52
<b>Future</b>													
	<b>(2046-2065)</b>	0.66	0.47	0.10	0.34	0.71	0.02	0.69	0.18	0.03	0.04	0.05	3.41
<b>Variation</b>		-38 %	-37 %	-29 %	-20 %	-20 %	-24 %	-7 %	-1 %	-40 %	-38 %	-55 %	-25 %

**Table 3: 5-year monthly low-flow (QMNA5) by sub-basin under baseline and future scenarios**

Table 4

	Description of measure	Maximum annual volume available in 2030 (Mm <sup>3</sup> )	Average annualized unit cost (€/m <sup>3</sup> )	UDU/AD U affected by the measure
<b>Water conservation measures (Demand side)</b>				
MU1	Reduction of leaks in urban water distribution networks	3.28	0.77	37
MU2	Installation of water conservation devices (faucet aerators, shower flow reducer, etc.) by households	0.36	0.56	62
MU3	Water consumption audits for single family houses and change in appliances	0.52	1.16	62
MU4	Same as U3 for multifamily housing units	0.51	1.64	33
MU5	Installation of automated reading meters and use of seasonal water tariffs to reduce peak season demand	0.83	0.66	62
MU6	Installation of water saving devices in hotels (faucet aerators, toilet flushes)	0.04	0.61	20
MU7	Water consumption audits of campsites and holiday parks. Installation of low flow flushes / showers, leakage detection in campsite distribution network, etc.	0.18	1.55	10
MU8	Replacement of water intensive landscapes with xeric vegetation (public gardens)	0.59	0.68	62
MU9	Replacement of irrigated lawns with artificial turf for sport grounds	0.43	1.95	7
MA1	Conversion of gravity irrigation systems to pressurized / sprinkler irrigation	0.81	0.16	7
MA2	Development of drip-feed irrigation at farm level in all pressurized irrigation systems	1.56	0.54	11
<b>Capacity expansion measures (Resource side)</b>				
GW	Substitution of water intakes in the River Orb (and alluvial aquifer) by other groundwater resources	1.00	1.89	5
DS	Substitution of water intakes in the River Orb by desalinated water (coastal municipalities)	3.60	1.22	2

Table 4: Main characteristics of the adaptation measures

Table A

Sub-basin	O1	O2	M4	O4	J3	O5	V3	O6	O8	O10	O12
<b>Warm up</b>											
<b>1968-1969</b>											
<b>Calibration</b>	<b>1970-2001</b>		<b>1970-1992</b>		<b>1970-2001</b>						
<b>Nash (Q)</b>	0.86	0.89	0.75	0.78	0.85	0.85	0.80	0.72	0.55	0.46	0.36
<b>RMSE (mm)</b>	23.8	19.8	20.2	24.0	28.2	28.2	26.1	19.4	2.8	3.1	3.4
<b>Validation</b>	<b>2002-2007</b>		<b>1993-1995</b>		<b>2002-2007</b>						
<b>Nash (Q)</b>	0.93	0.80	0.47	0.54	0.80	0.72	0.78	0.40	0.69	0.58	0.40
<b>RMSE (mm)</b>	16.5	29.3	42.1	50.5	29.8	1.8	25.5	20.8	1.7	2.0	2.4

Table A: Calibration and validation performances of the hydrological model by sub-basins.



Figure A

