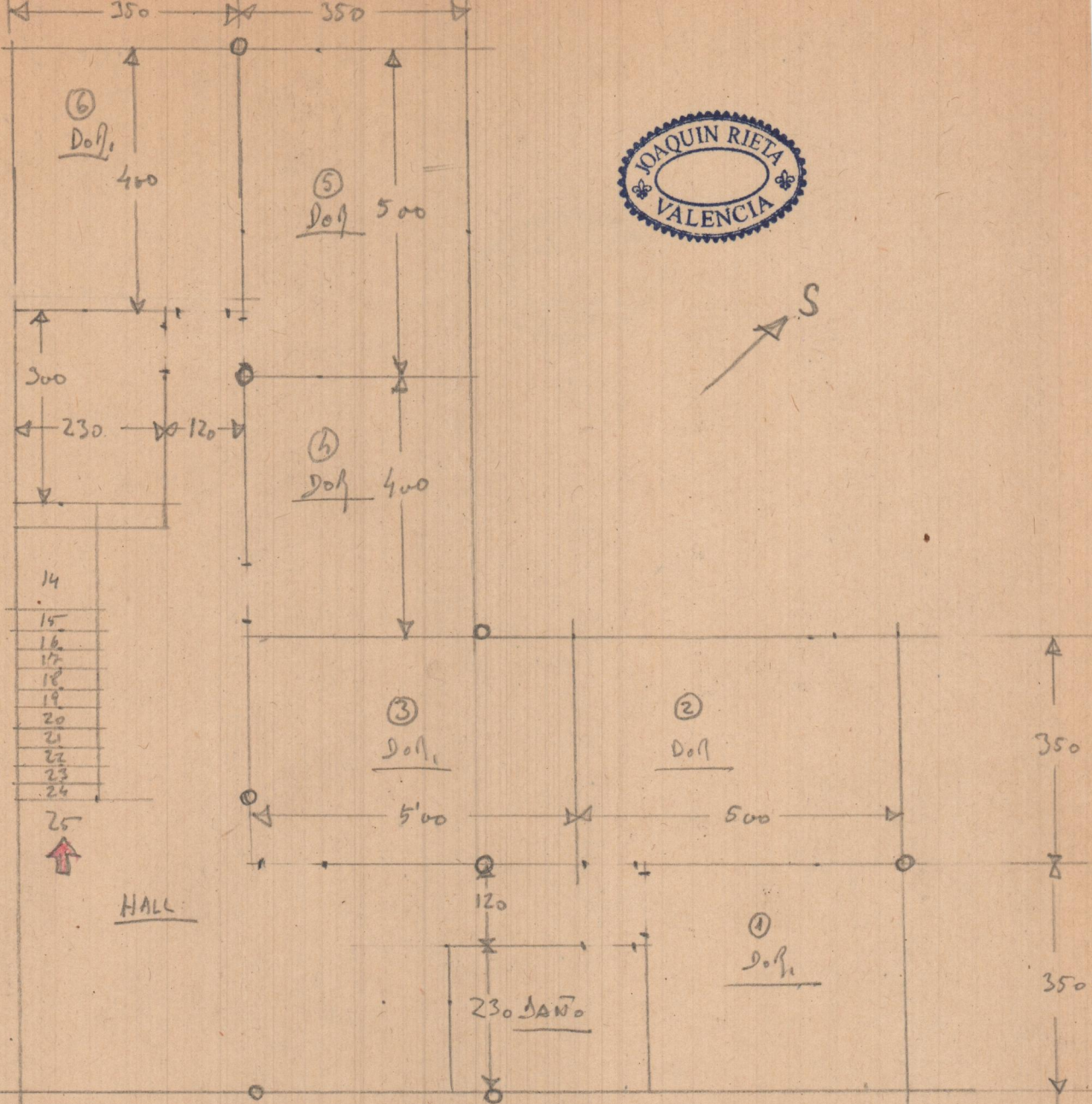
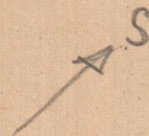


25
 16
 150
 25
 400

↑
 PISO BAJO

E. 1/100



PLANTA ALTA

$$\begin{aligned}
 9'00 \times 2'00 &= 63 \text{ m}^2 \\
 13'50 \times 2'00 &= 94'5'' \\
 \hline
 &152'50 \text{ m}^2 \\
 &\quad 2 \\
 \hline
 &31'5'00 \text{ u} 2 \\
 &\quad 4 \text{ u} 2 \\
 \hline
 &126.000 \text{ m}^2
 \end{aligned}$$