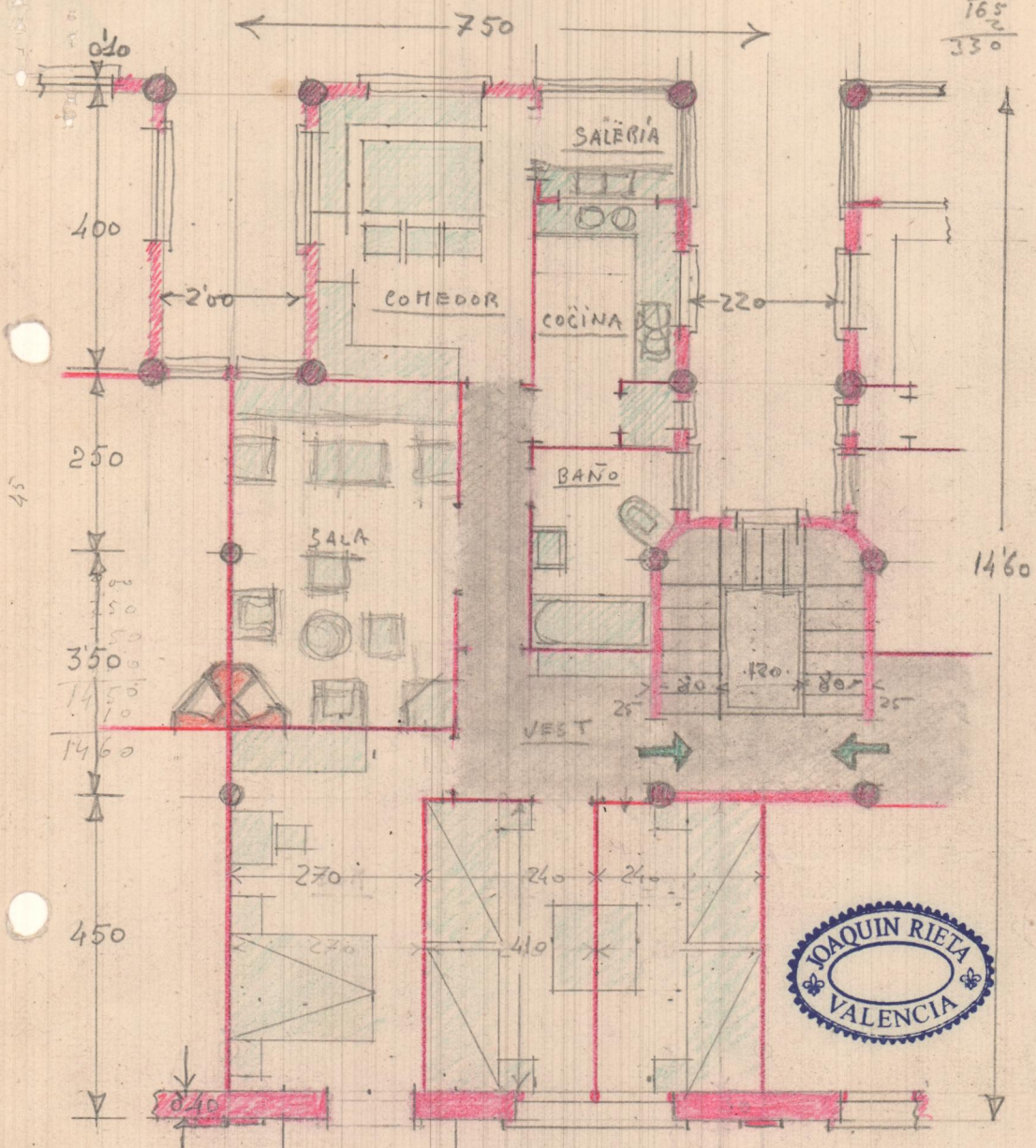


25
80
60
165
2
330



Salón - $14.60 \times 2.50 = 109.50 \text{ m}^2$
 Petus - $\left\{ \begin{array}{l} 4.00 \times 1.00 = 4.00 \\ 6.00 \times 1.10 = 6.60 \end{array} \right\} = 10.60 \text{ m}^2$
98.90 m²

F. A. A.