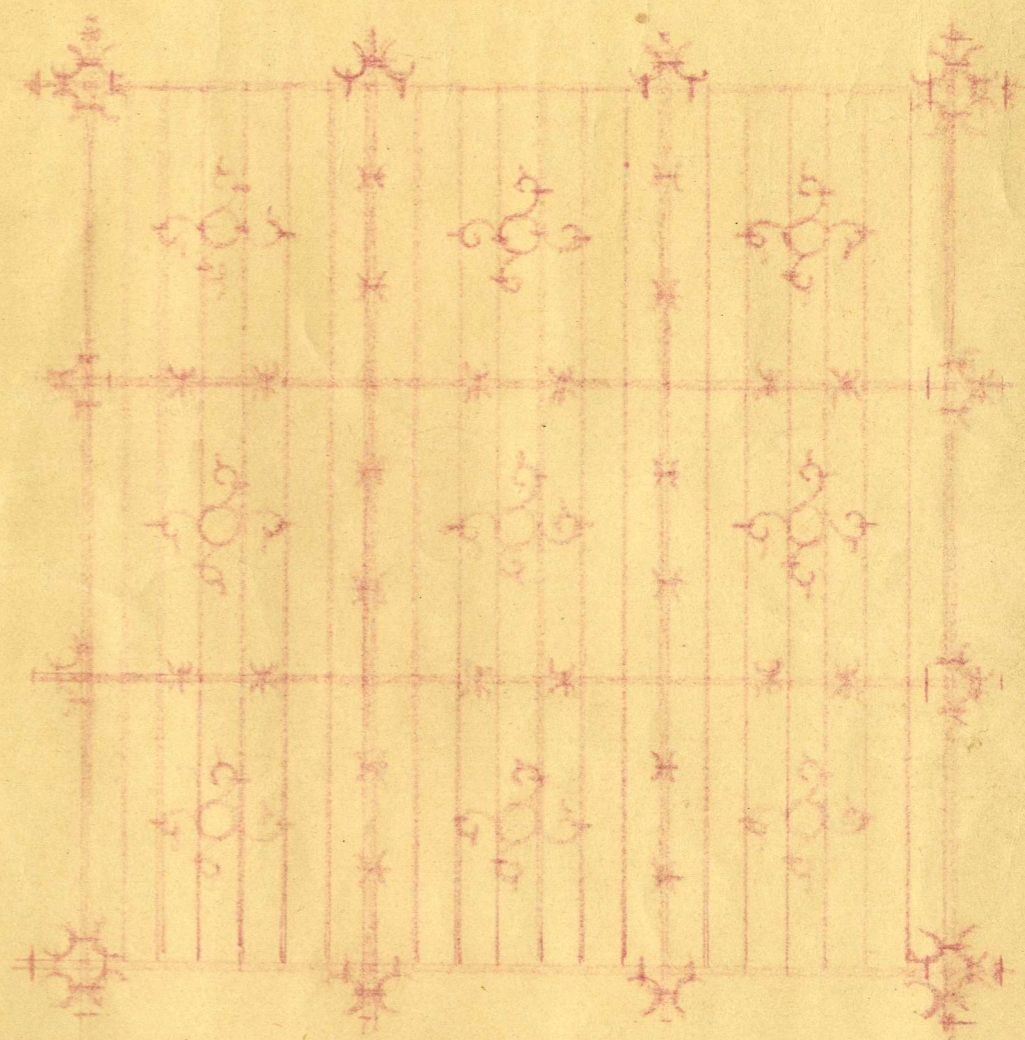
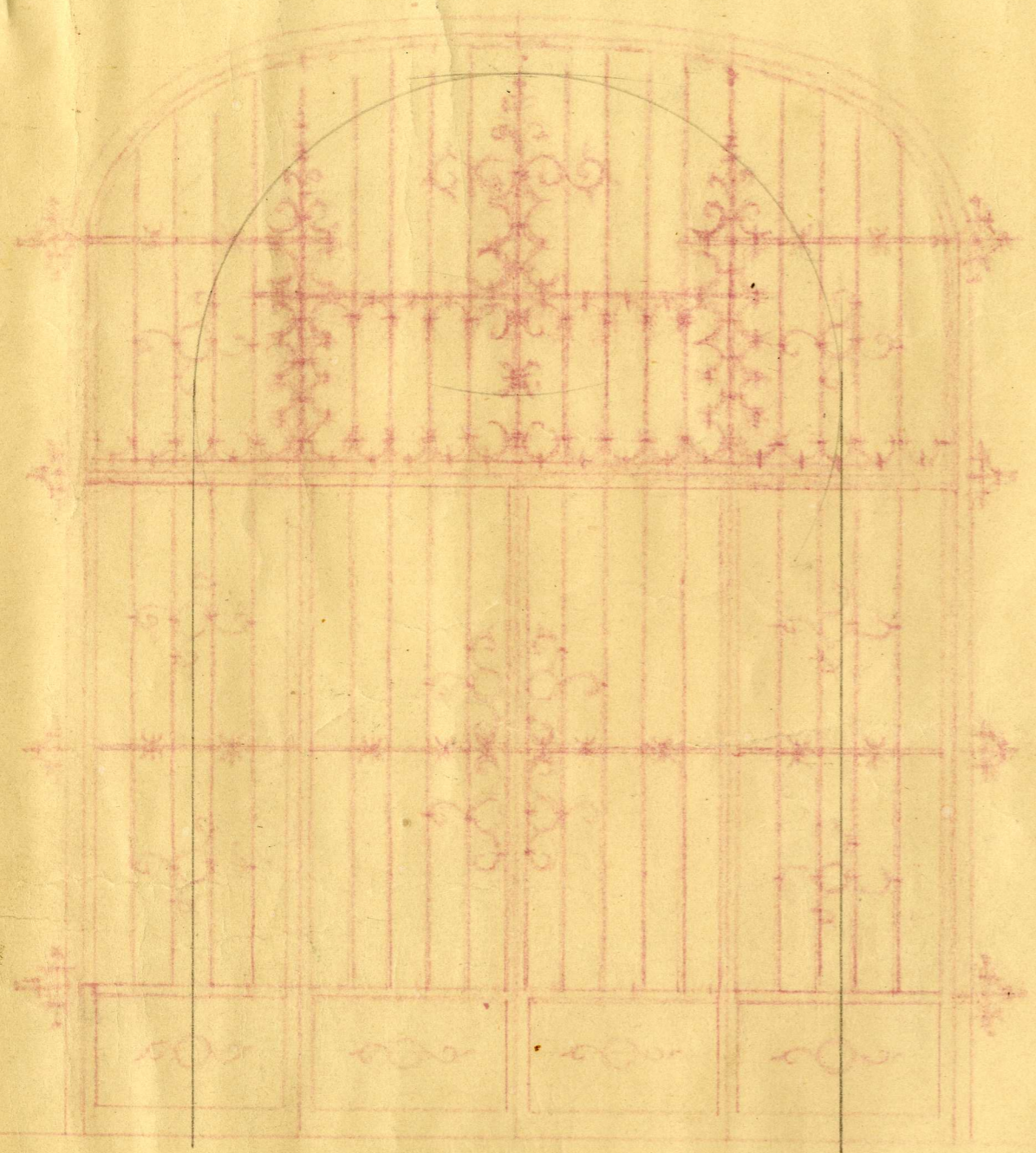
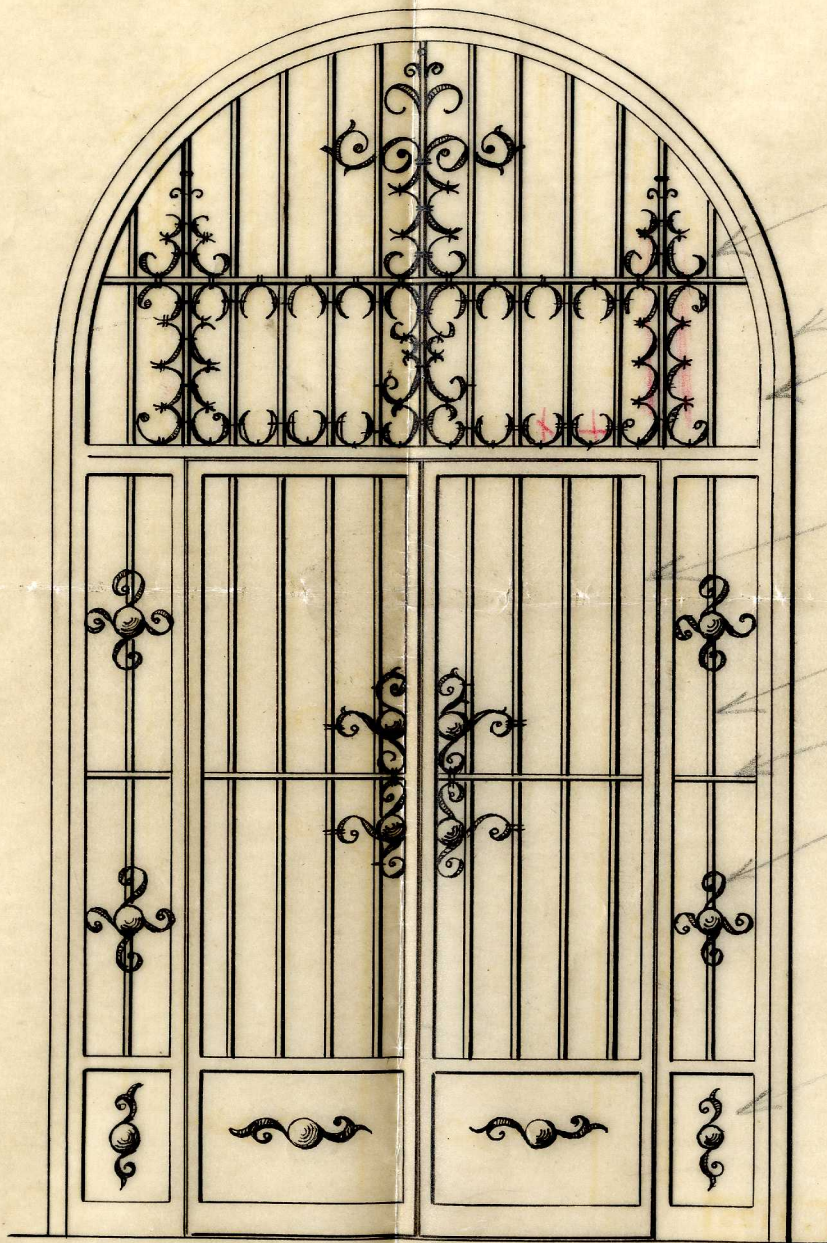




E. I. 25  
ENERO-1942





Cuadrado 18<sup>ml</sup> / m

Plano 40x10<sup>ml</sup> / m

angulo 35<sup>ml</sup> / m

angulo 35<sup>ml</sup> / m

Cuadrado 18<sup>ml</sup> / m

Cuadrado 18<sup>ml</sup> / m

cartelas de 18x4<sup>ml</sup> / m

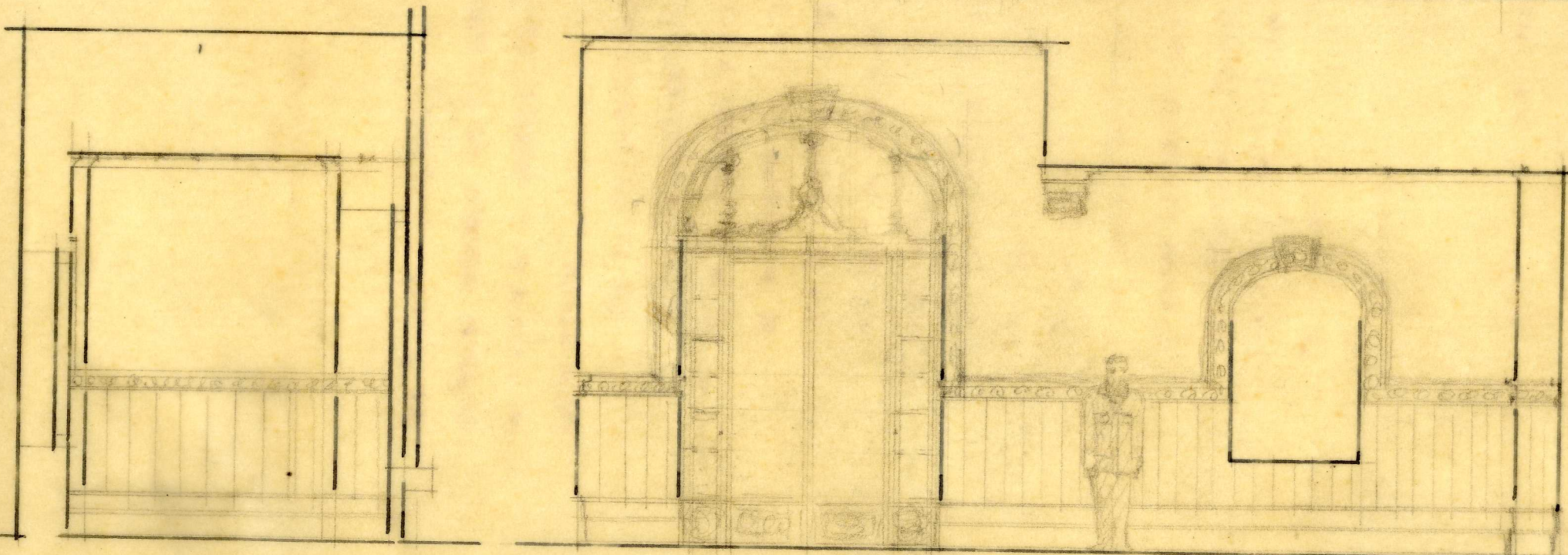
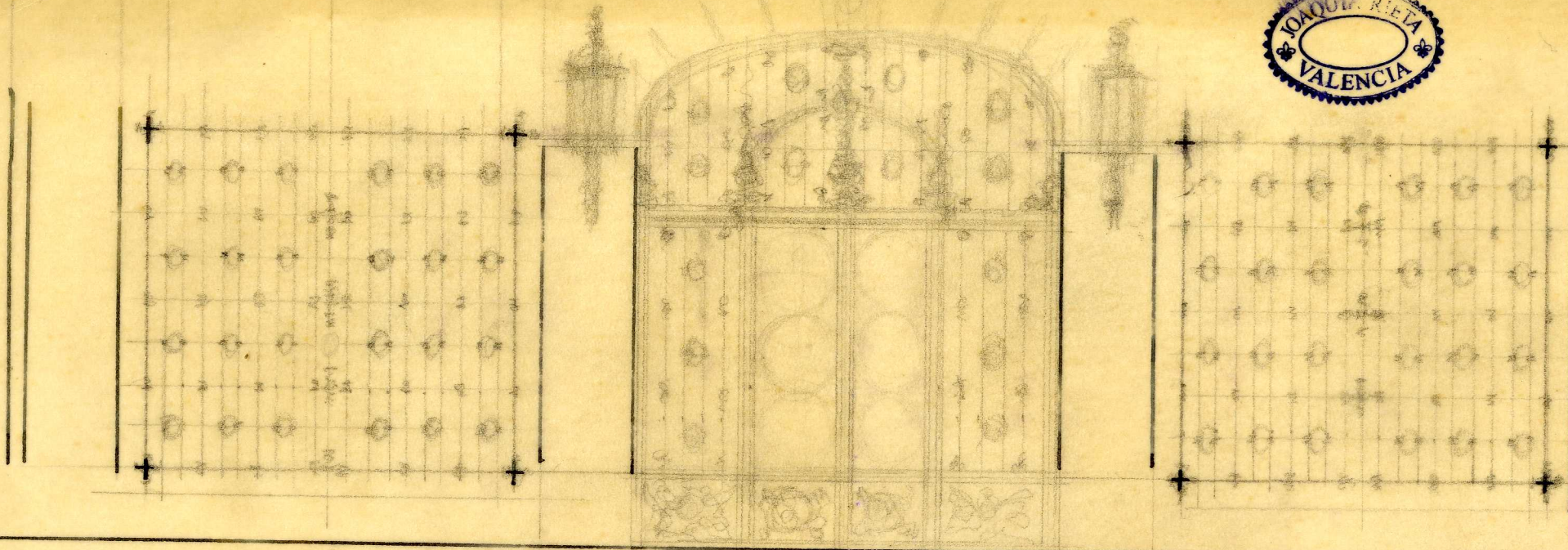
Zocalo chapas 6<sup>ml</sup> / m

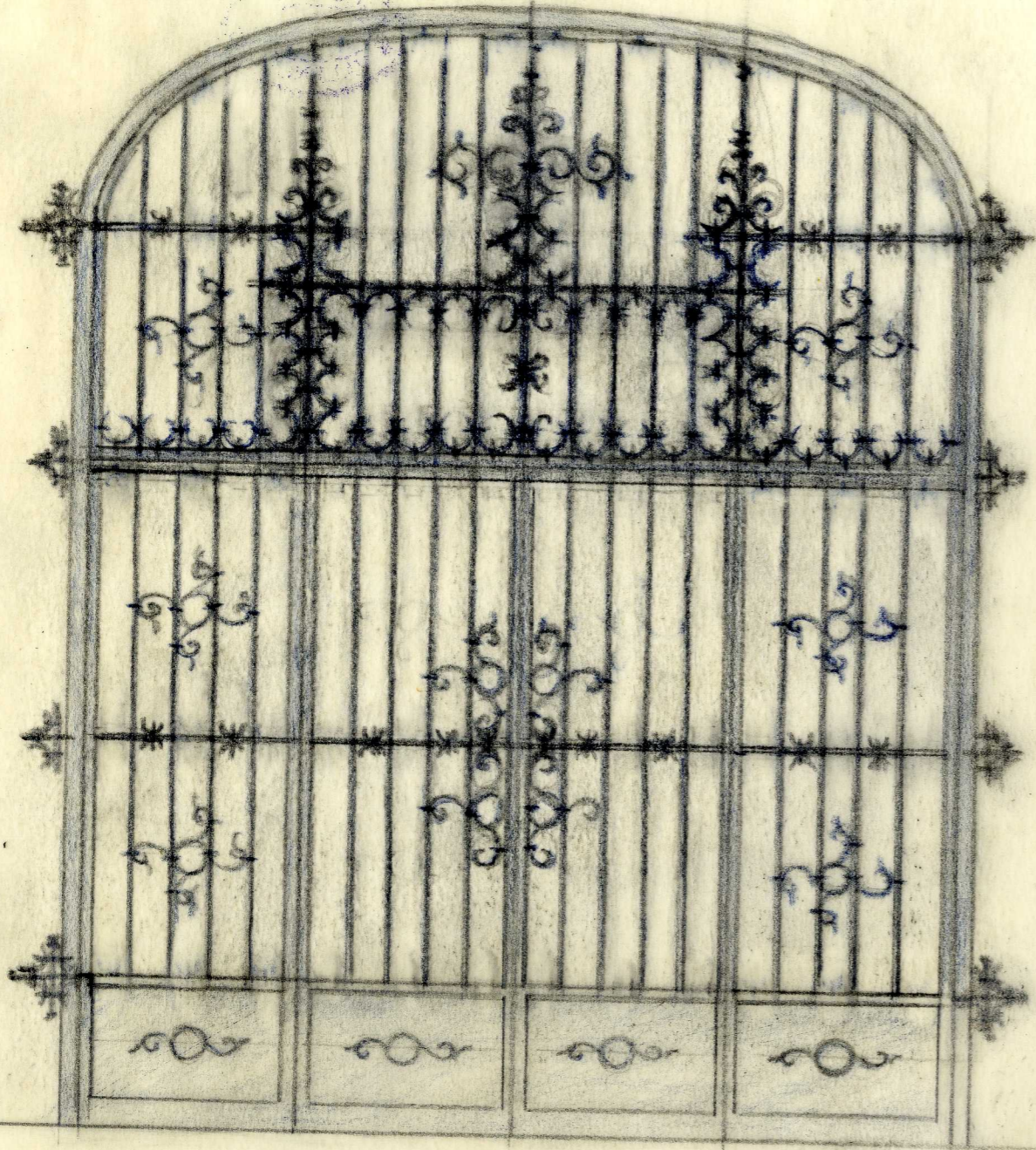
Ventallas cristal angulo 35<sup>ml</sup> / m  
y cuadrado 10<sup>ml</sup> / m

E. 1:25

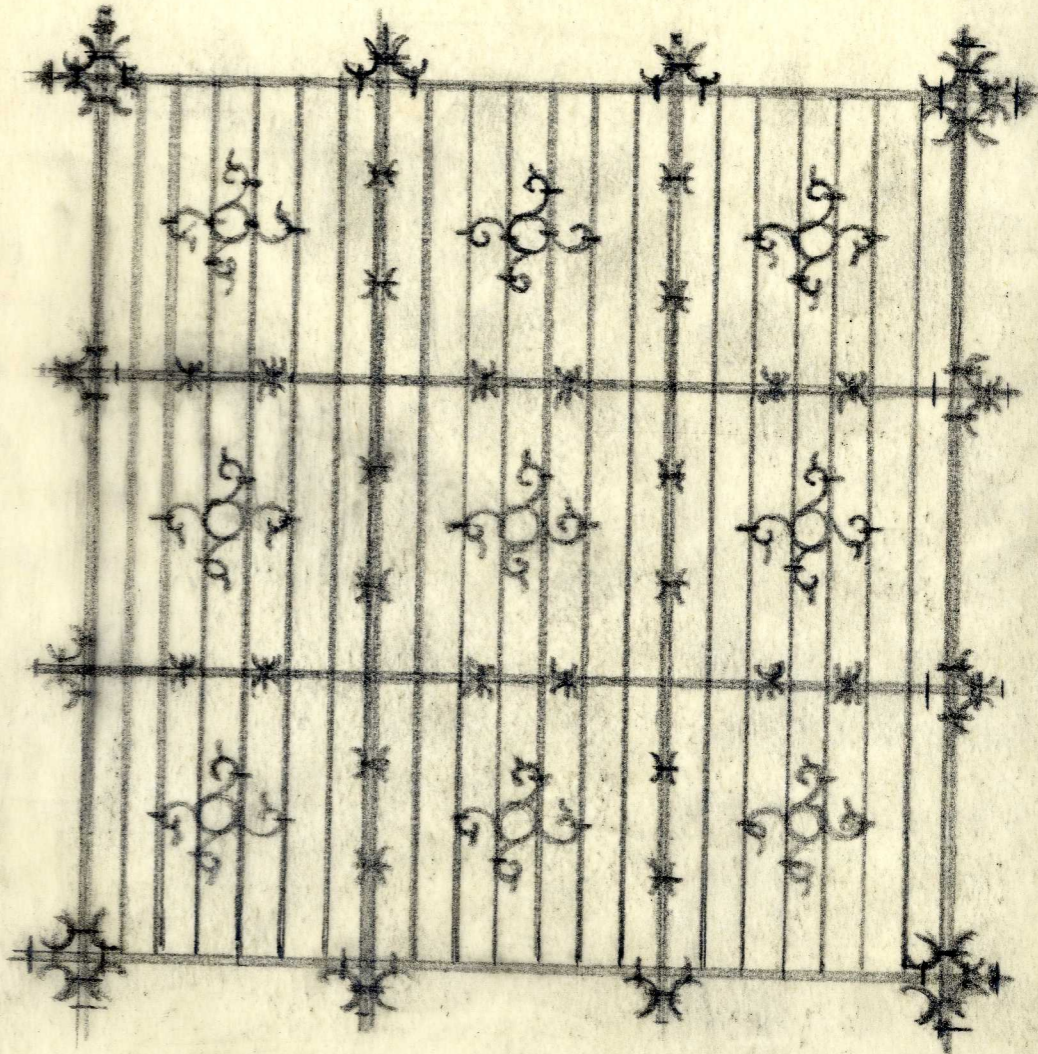


1620  
20  
324





E. J. 25  
ENERO-1942

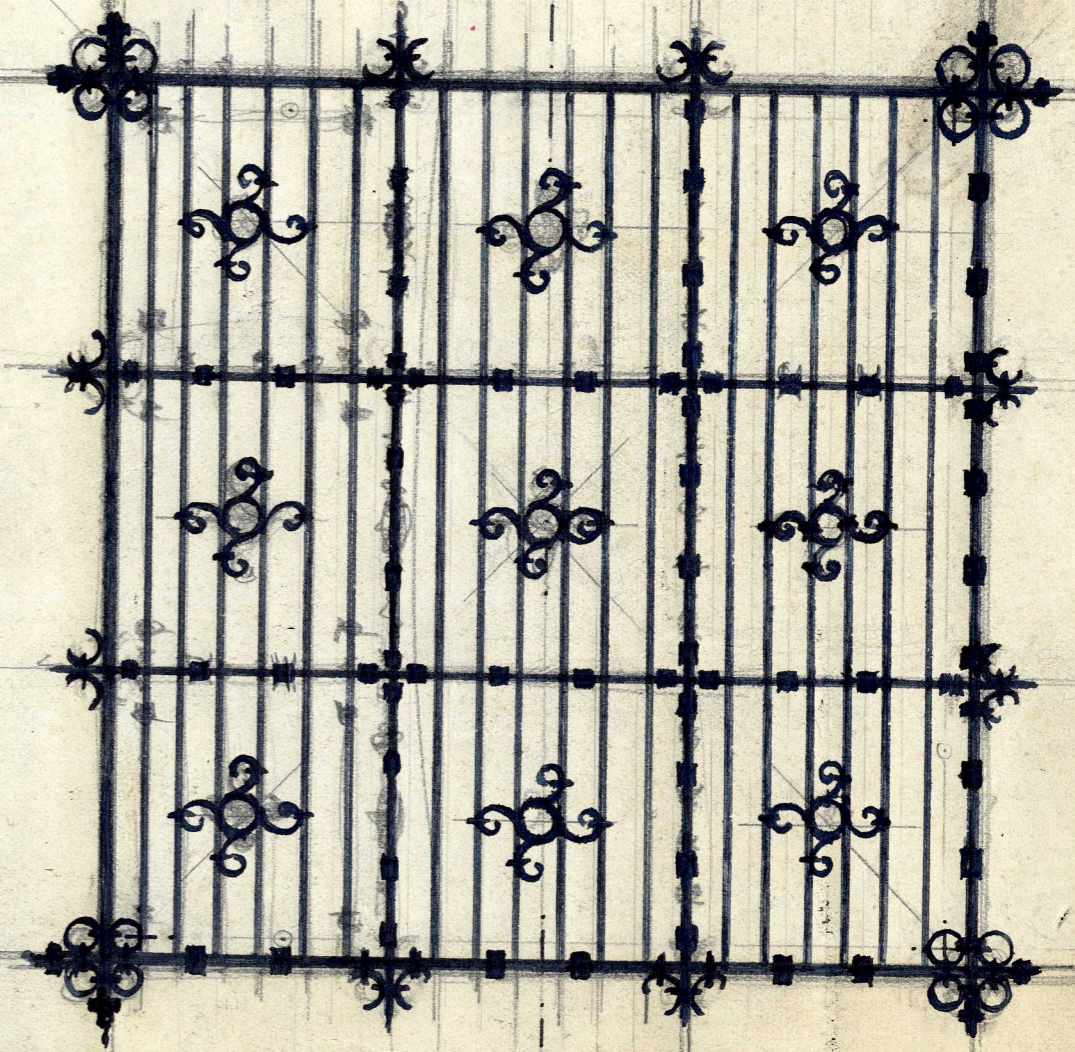
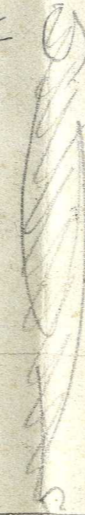


170  
4  
68

1:25



1/25



25  
12  
50  
52

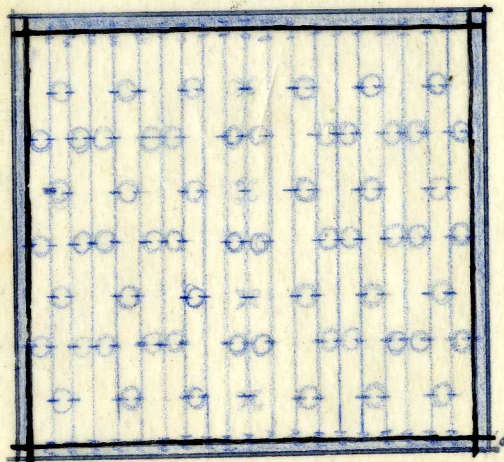
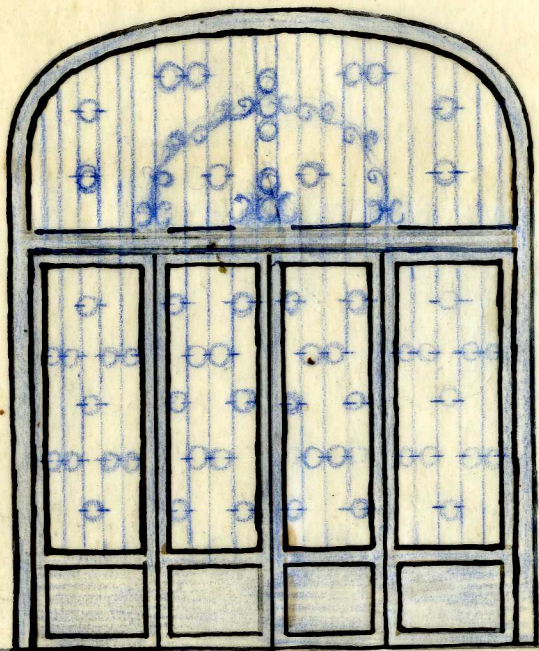
115

60 120  
h

202

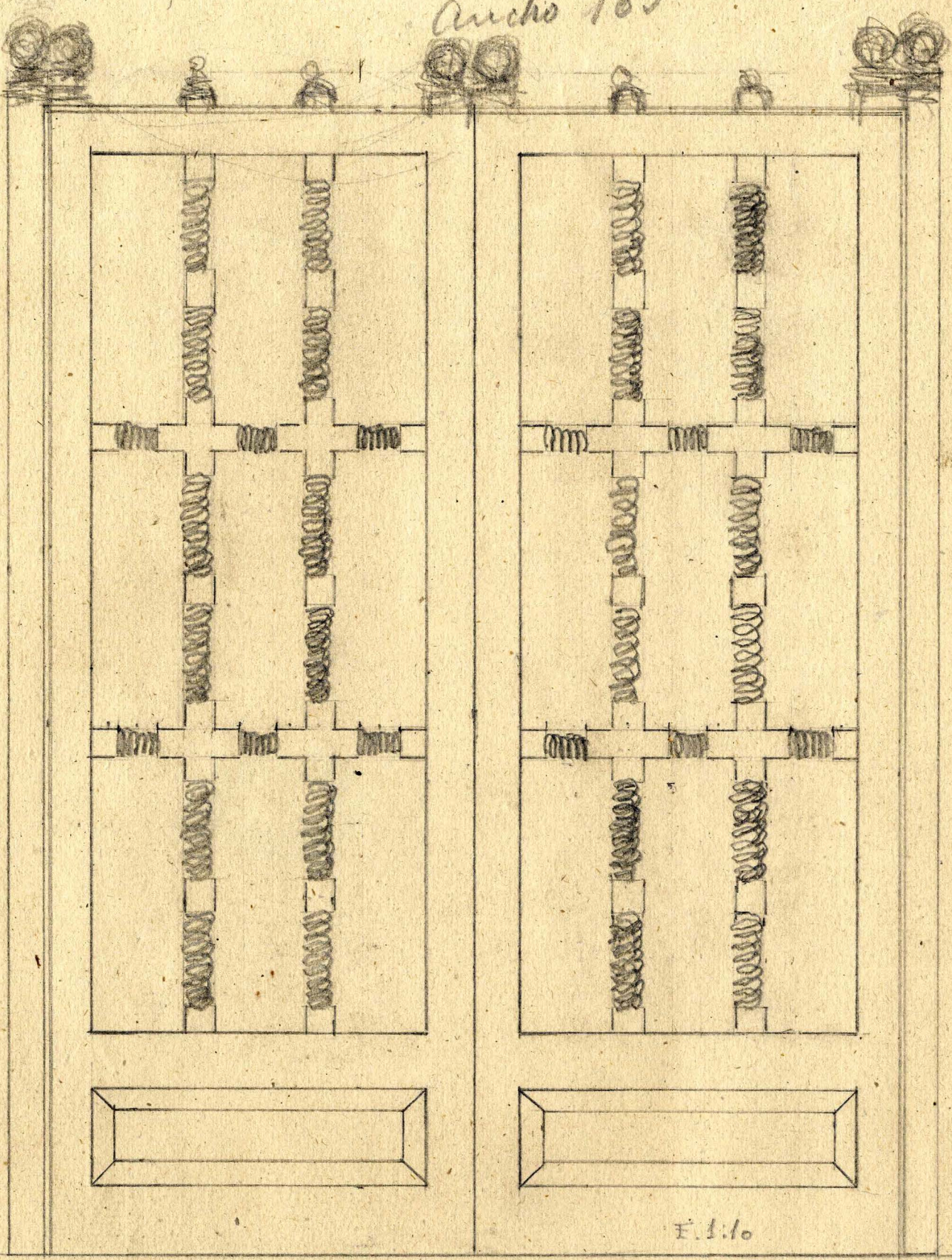
Giner  
Pinto

CROQUIS - E. 1:50  
VNA CANCELA  
Y ODS REJAS



Archo 165

Alfama 212



E. 1.10

Escala 1x10

