

Document downloaded from:

<http://hdl.handle.net/10251/74559>

This paper must be cited as:

Bermúdez, V.; Luján, JM.; Pla Moreno, B.; Linares Rodríguez, WG. (2011). Effects of low pressure exhaust gas recirculation on regulated and unregulated gaseous emissions during NEDC in a light-duty diesel engine. *Energy*. 36(9):5655-5665.
doi:10.1016/j.energy.2011.06.061.



The final publication is available at

<http://dx.doi.org/10.1016/j.energy.2011.06.061>

Copyright Elsevier

Additional Information

Figure Captions

Figure 1. *Scheme of the engine layout with both high and low pressure exhaust gas recirculation (EGR) systems.*

Figure 2. *Evolution of the fuel mass consumed during the New European Driving Cycle (NEDC).*

Figure 3. *Total fuel mass consumed (a), and total Carbon Dioxide emissions (b).*

Figure 4. *Nitrogen Oxides (NO_x) emissions during the New European Driving Cycle (NEDC).*

Figure 5. *Total Nitrogen Oxides (NO_x) emissions.*

Figure 6. *Total Carbon Monoxide (CO) emissions.*

Figure 7. *Total Hydrocarbons (THC) emissions.*

Figure 8. *Hydrocarbons speciation for each tested configuration.*

Figure 9. *Evolution of the iso-Butene (iso- C_4H_8) emissions during the New European Driving Cycle (NEDC).*

Figure 10. *Evolution of the Benzene (C_6H_6) emissions during the New European Driving Cycle (NEDC).*

Figure 11. *Total formaldehyde (HCHO) emissions.*

Figure 12. *Total formic acid (HCOOH) emissions.*

Figure 13. *Nitrous Oxide (N_2O) emissions during the New European Driving Cycle (NEDC).*

Figure 14. *Maximum incremental reactivity of exhaust emissions.*

Figure 1

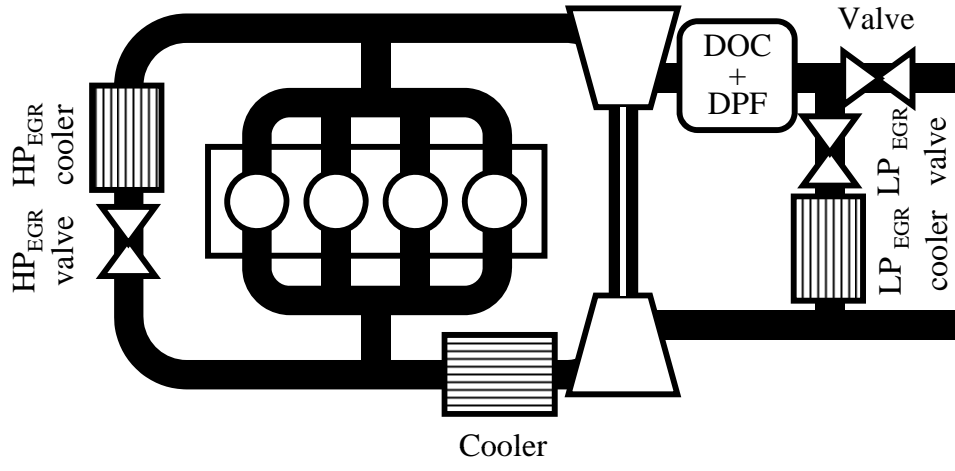


Figure 2

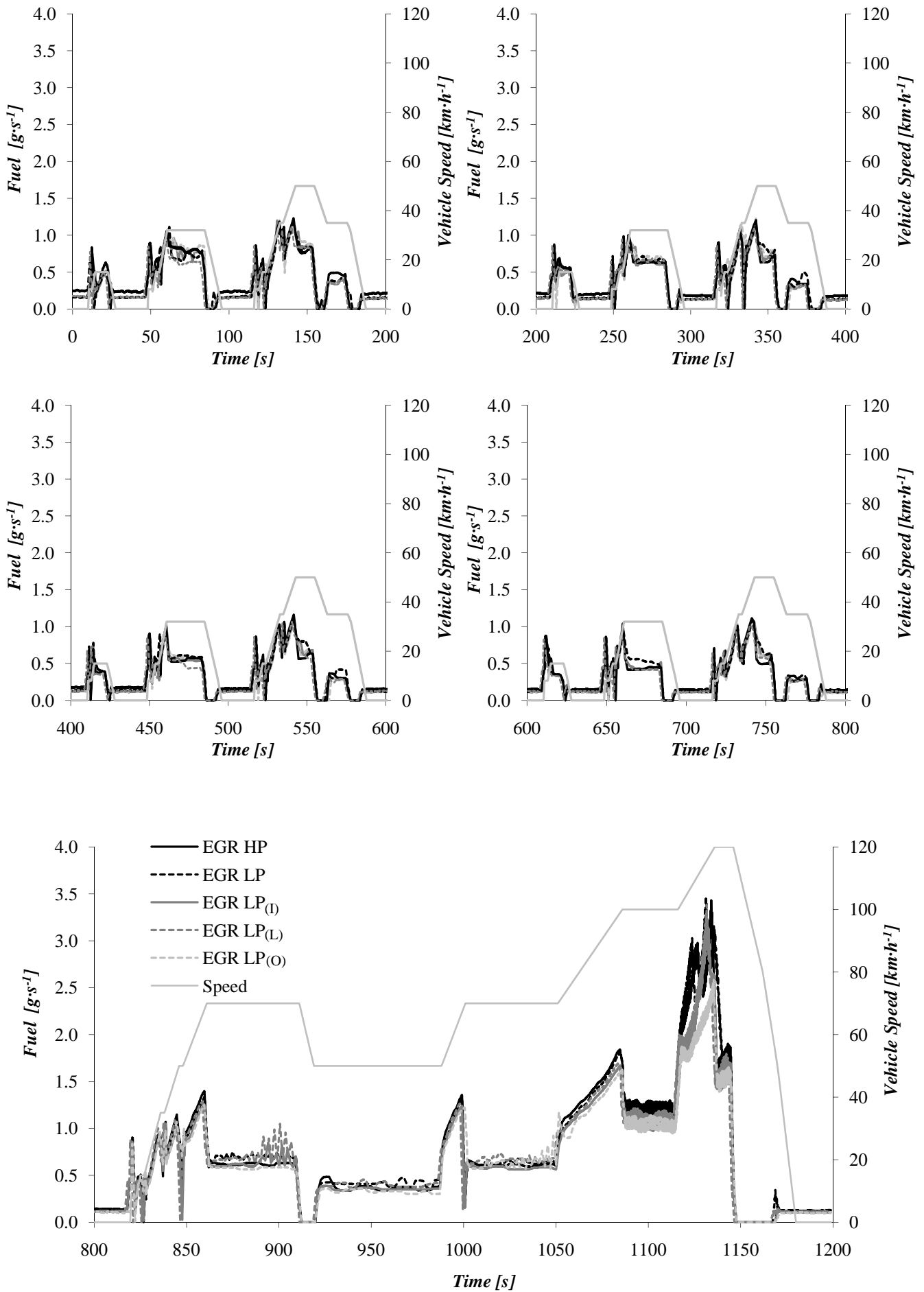
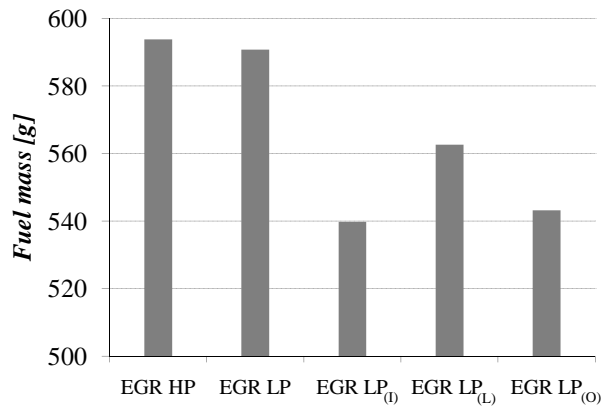
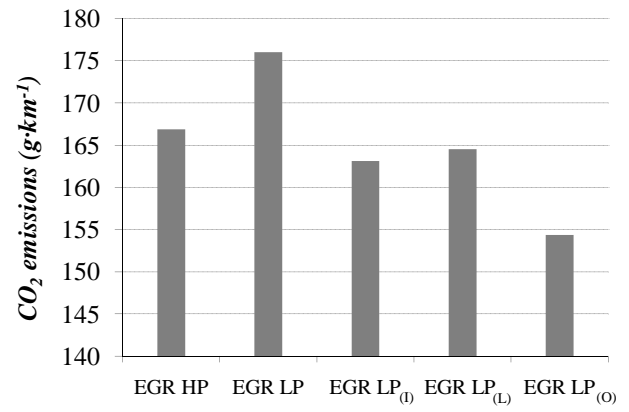


Figure 3



(a)



(b)

Figure 4

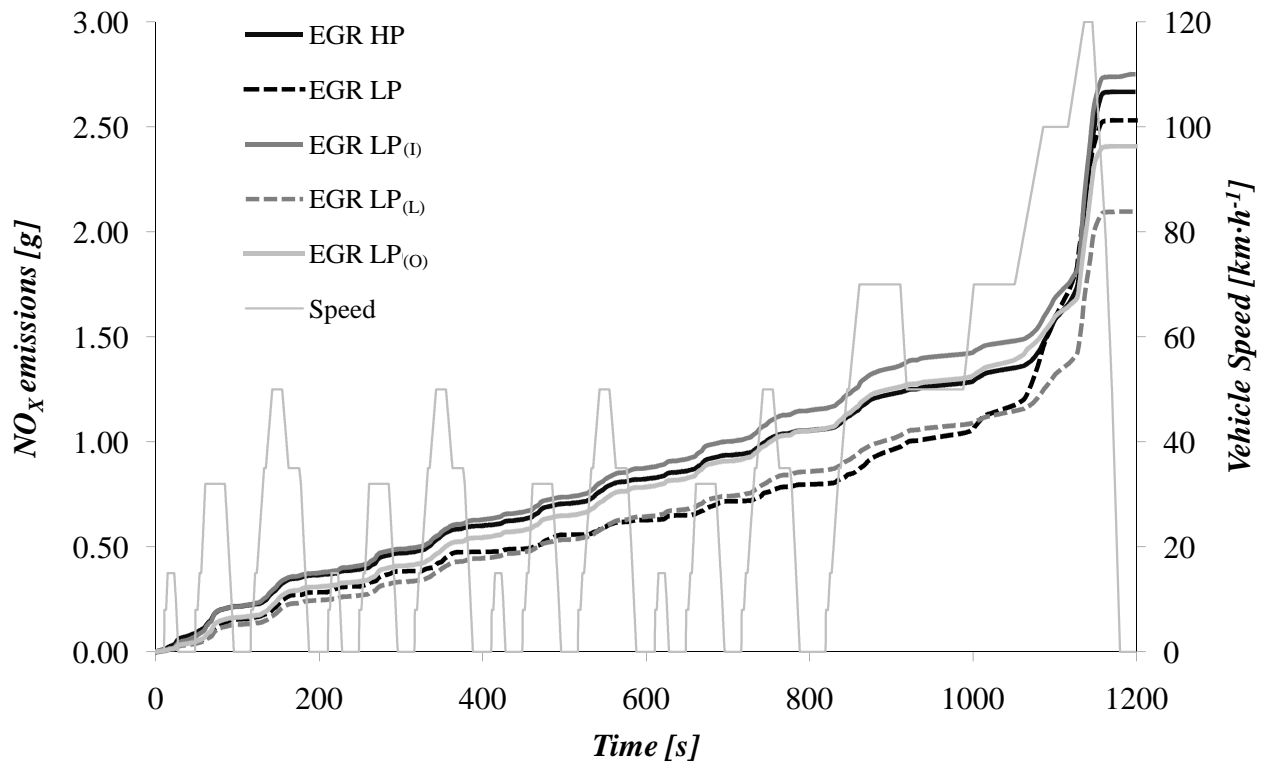


Figure 5

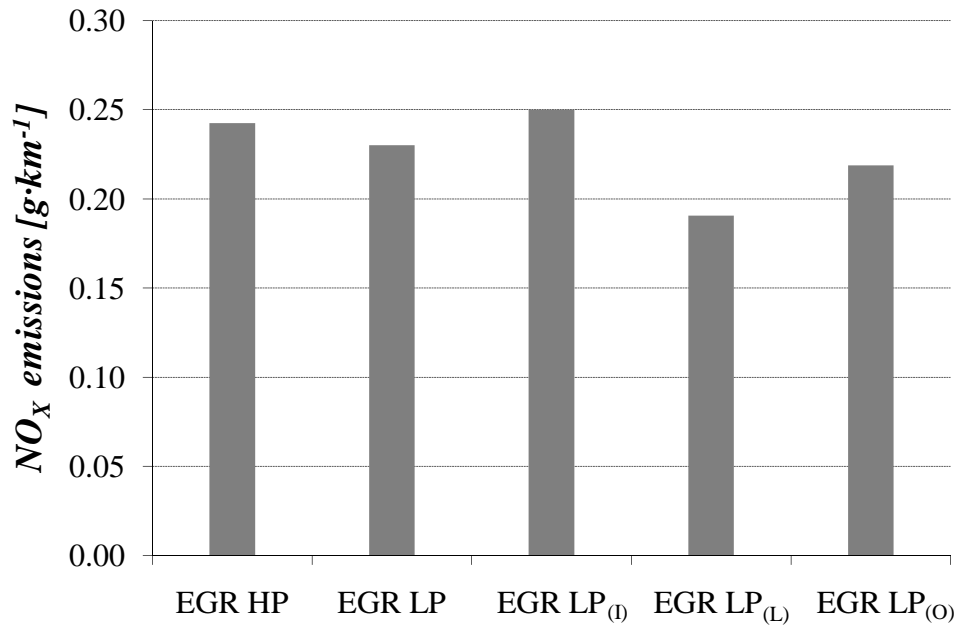


Figure 6

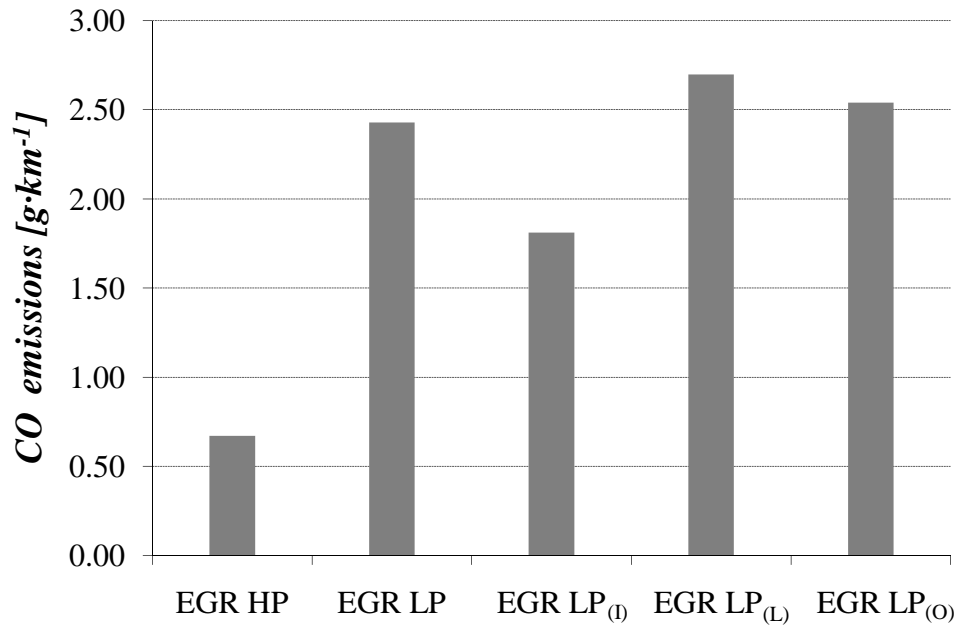


Figure 7

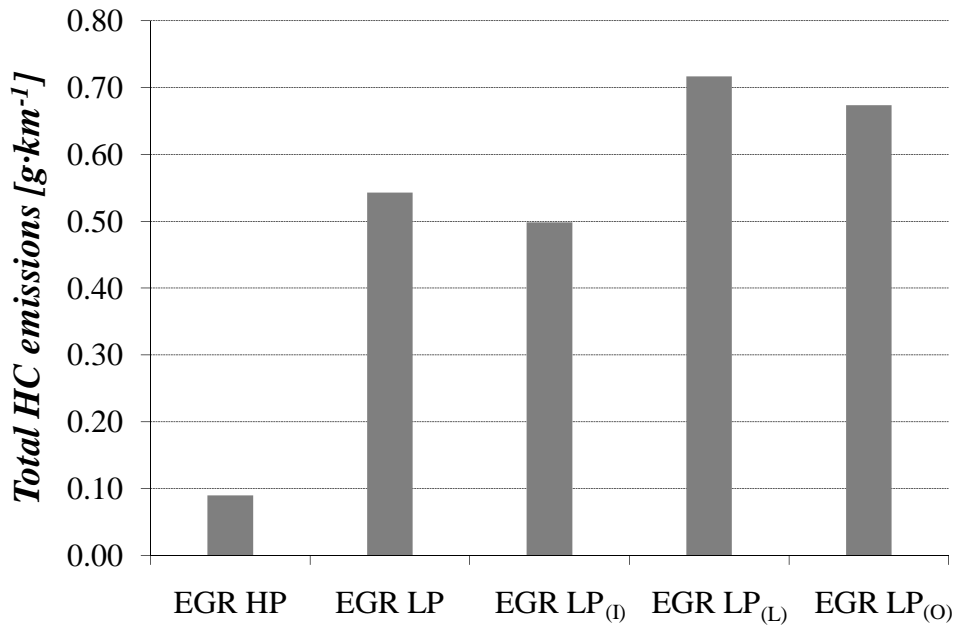


Figure 8

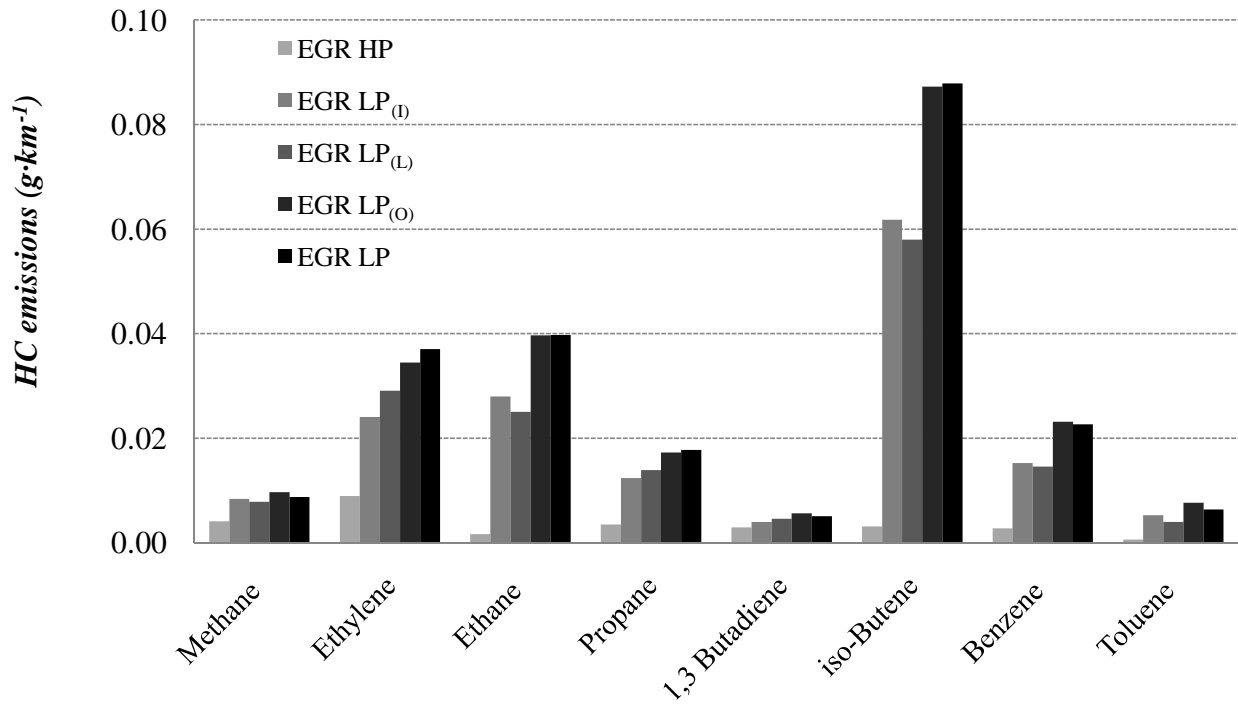


Figure 9

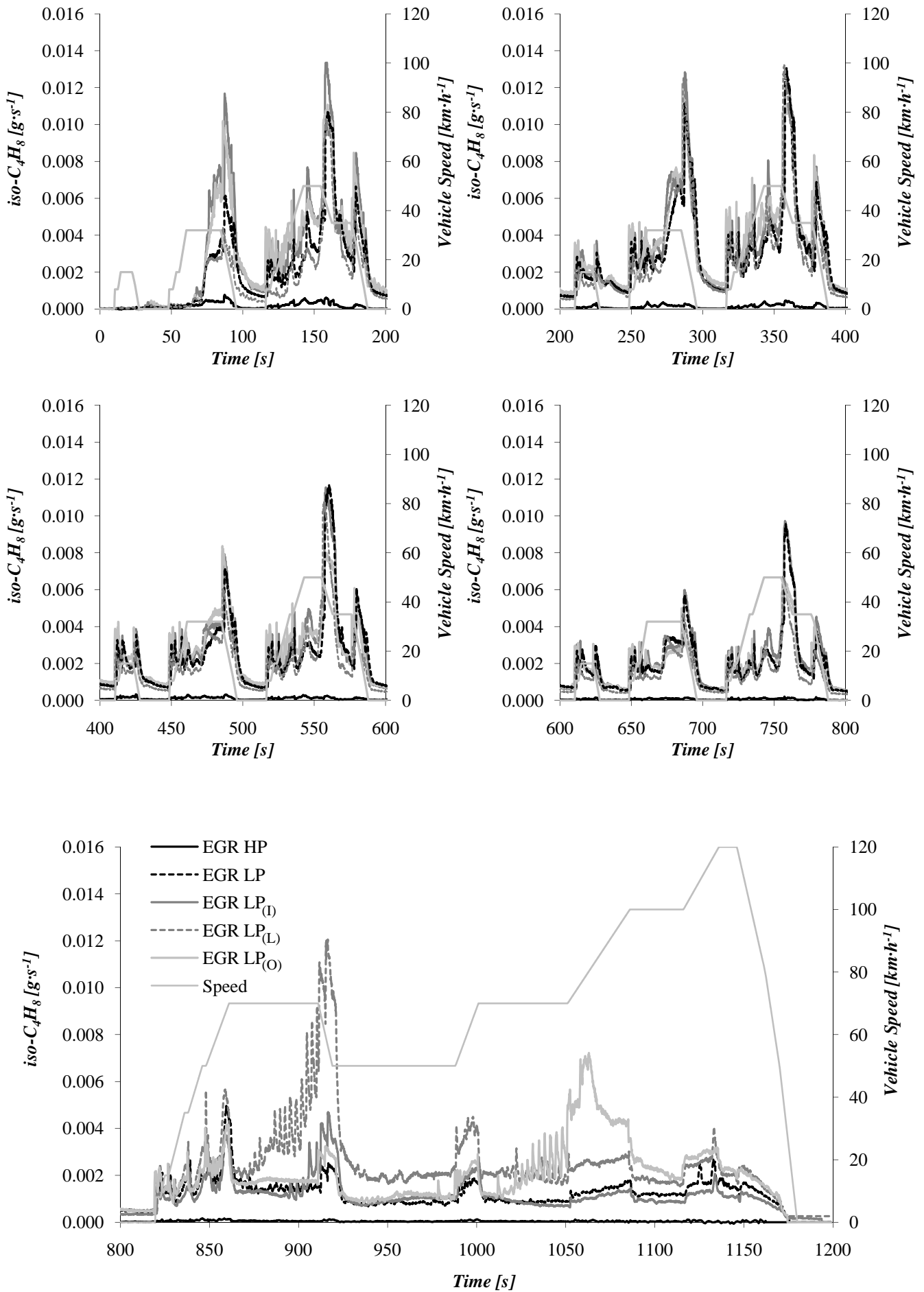


Figure 10

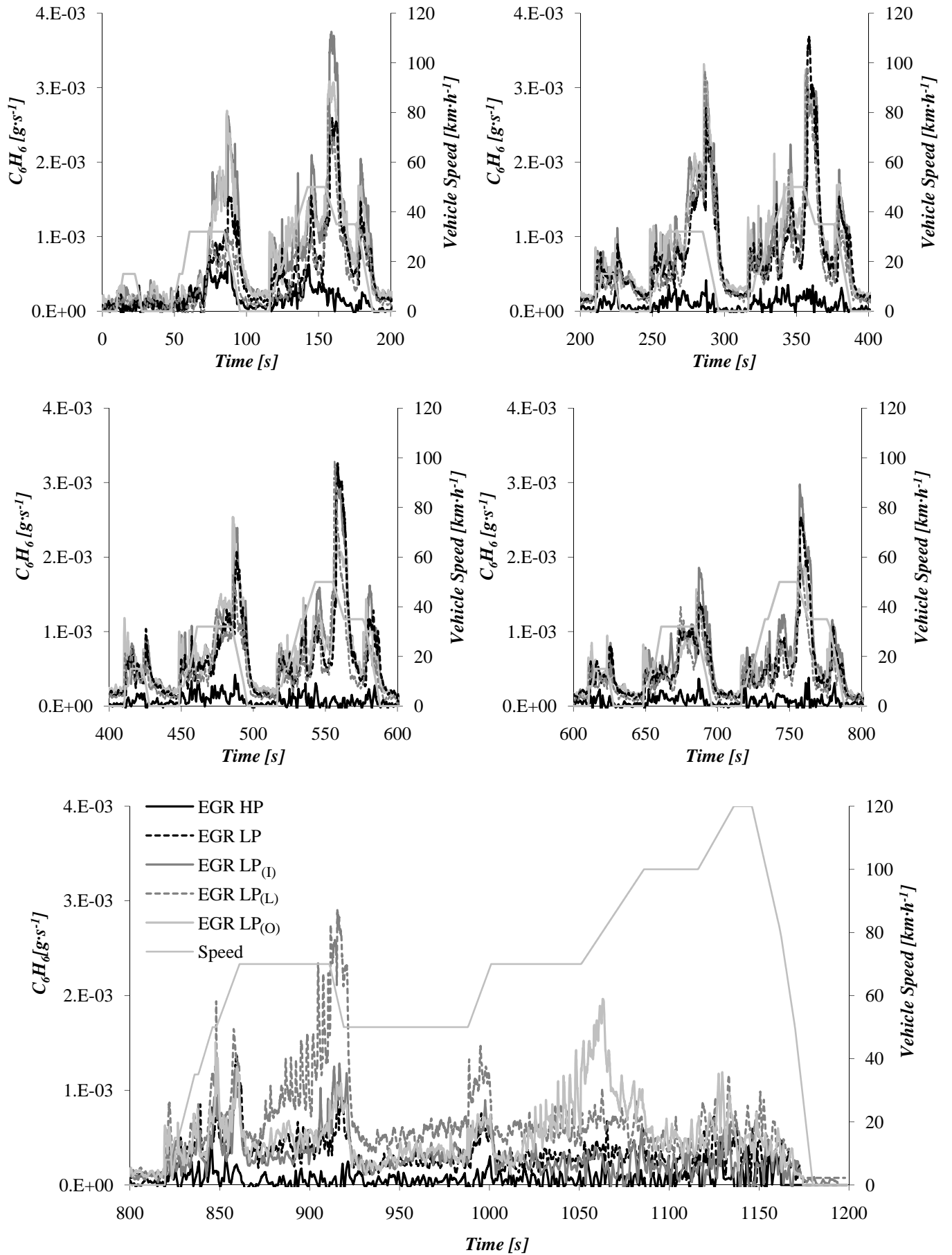


Figure 11

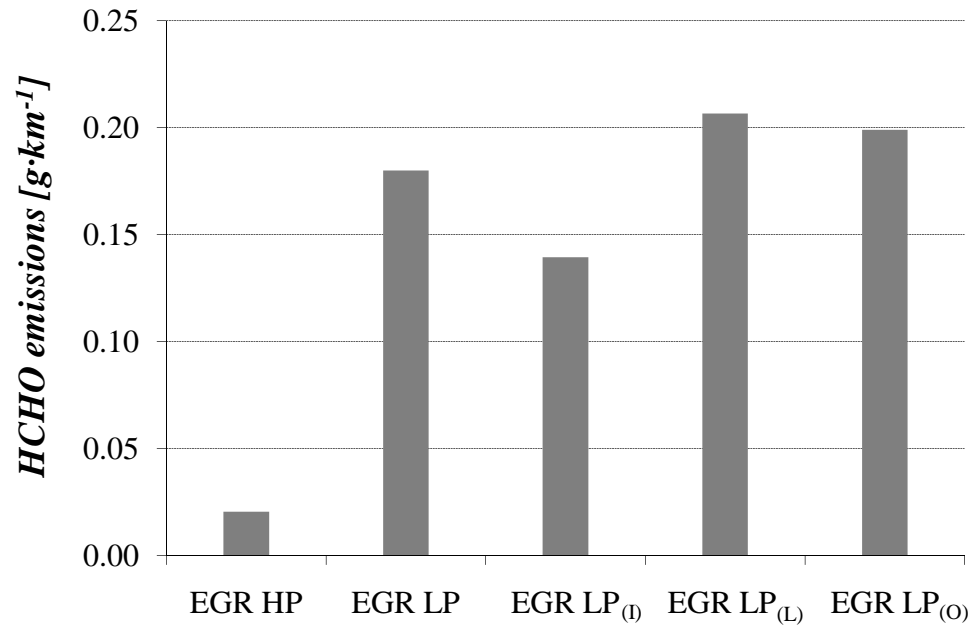


Figure 12

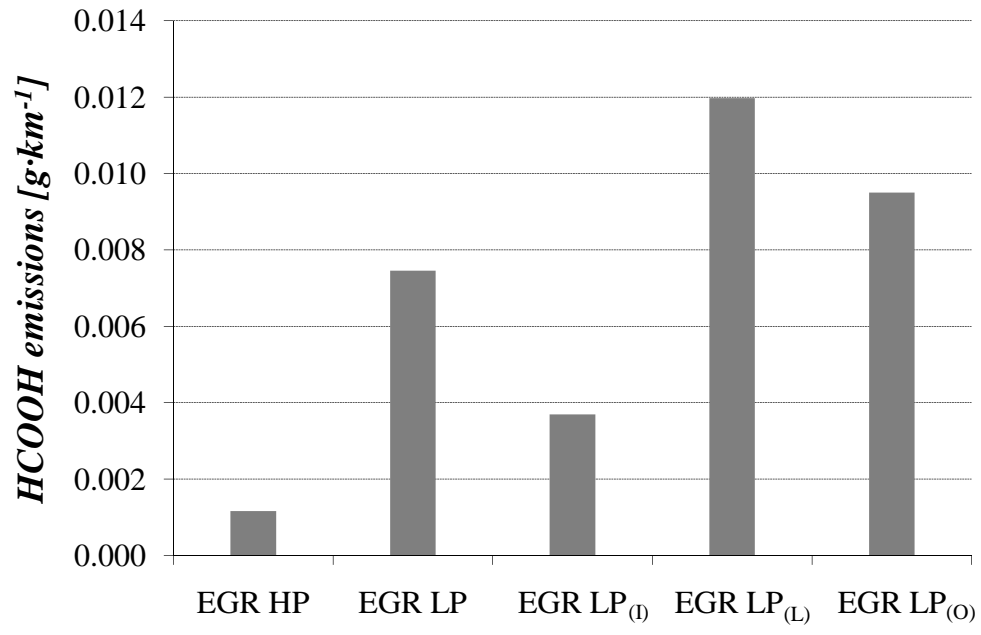


Figure 13

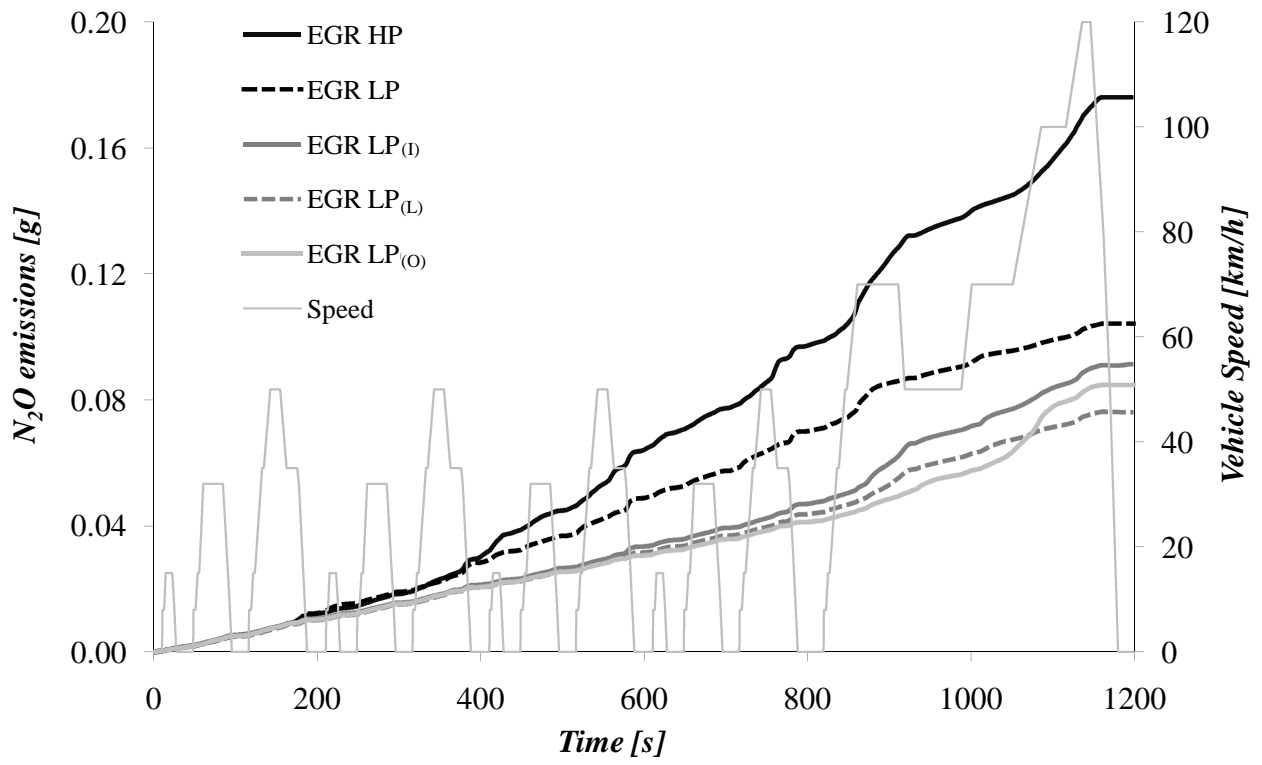


Figure 14

