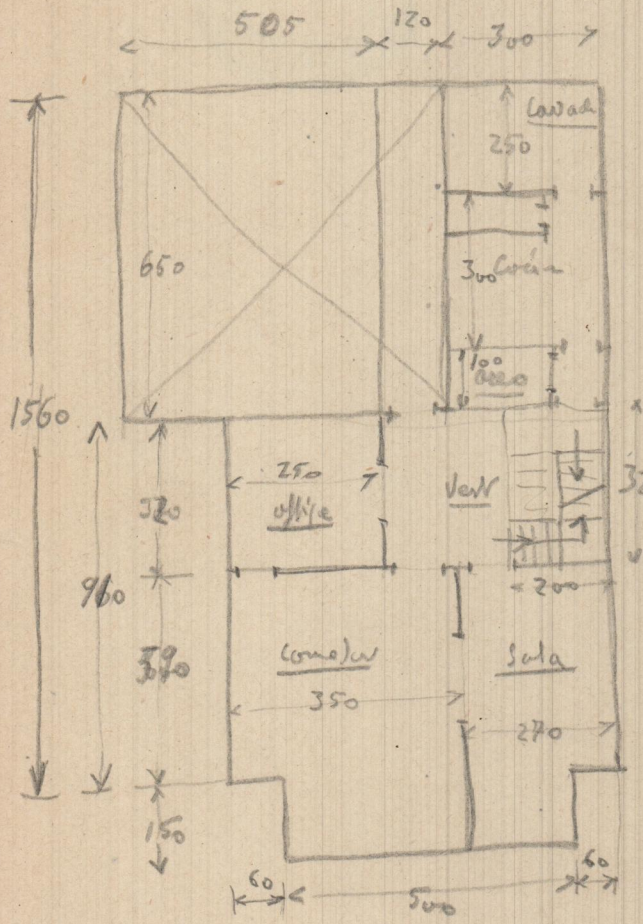


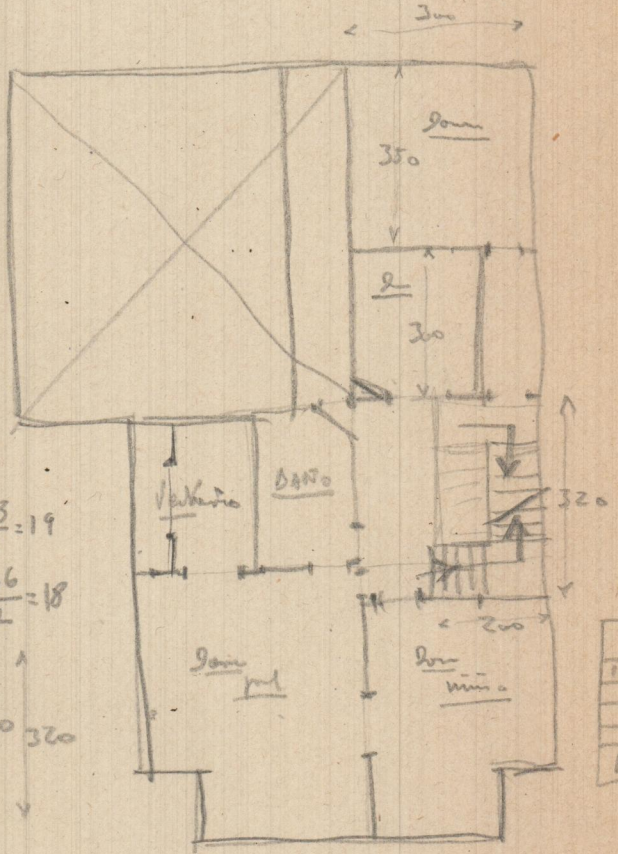
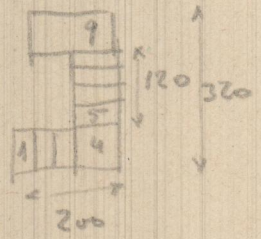
Segura - 1-3-45

(2) Tantes



$$\frac{320}{16} = 20, \quad \frac{323}{17} = 19$$

$$\frac{304}{16} = 19, \quad \frac{306}{17} = 18$$



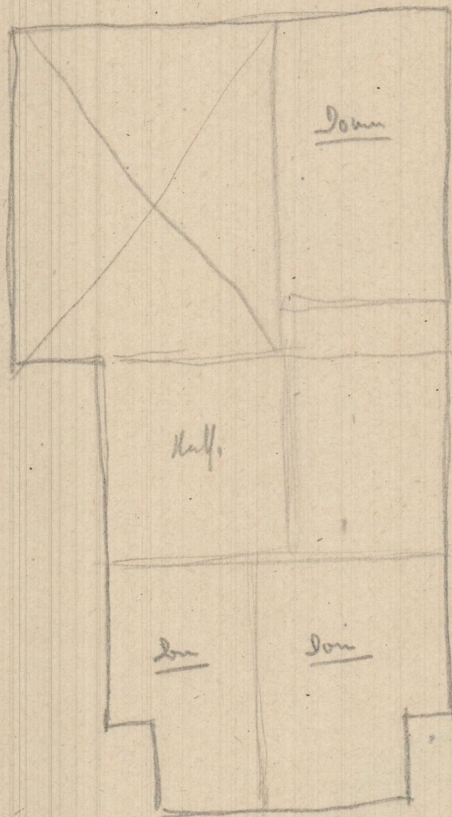
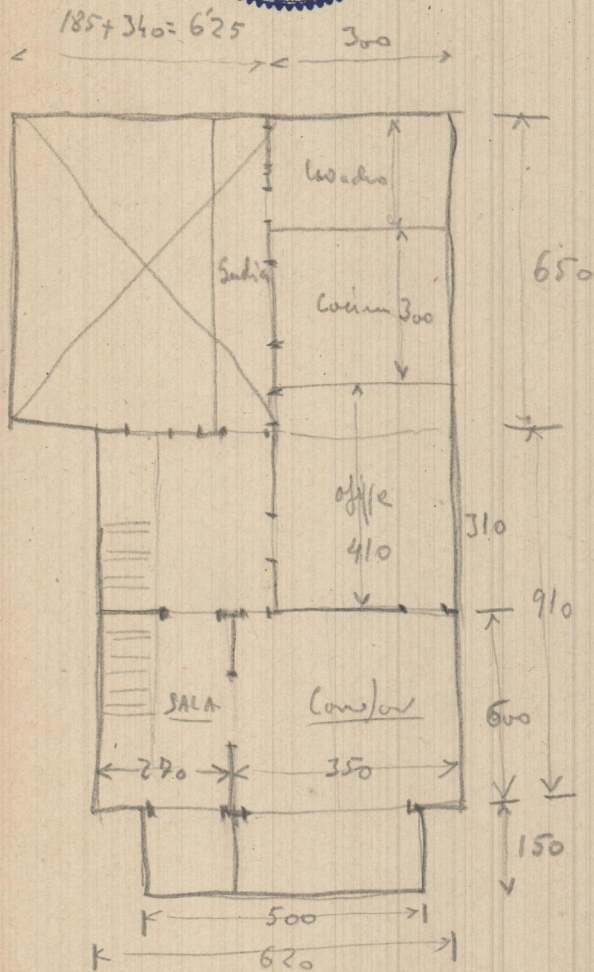
9
10
15
14

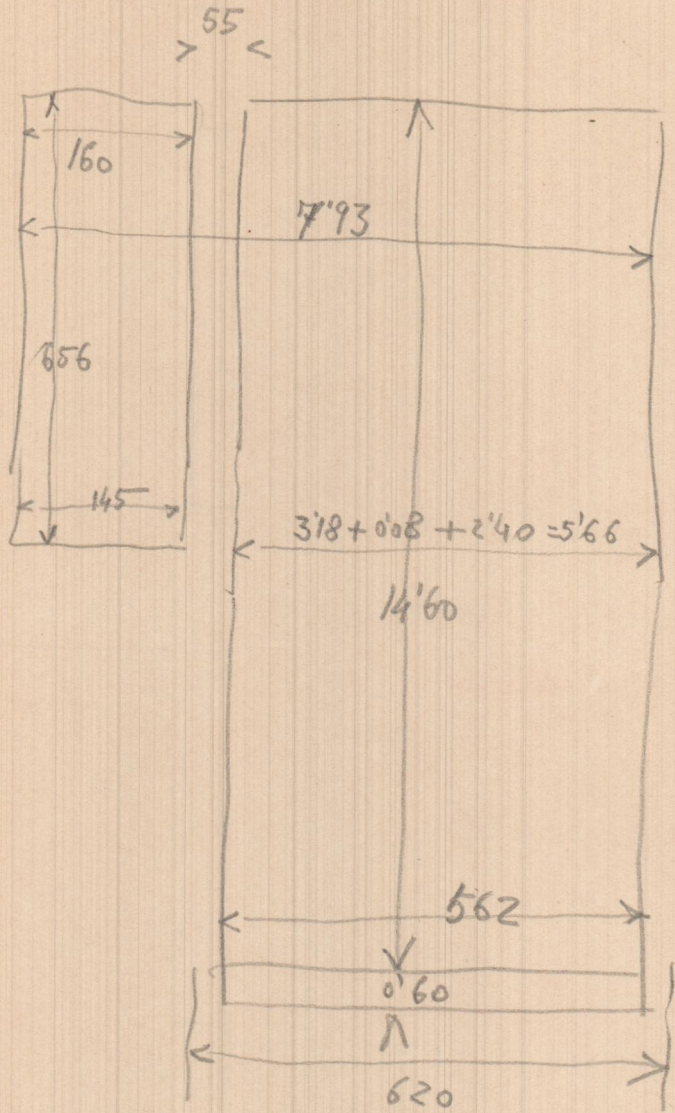


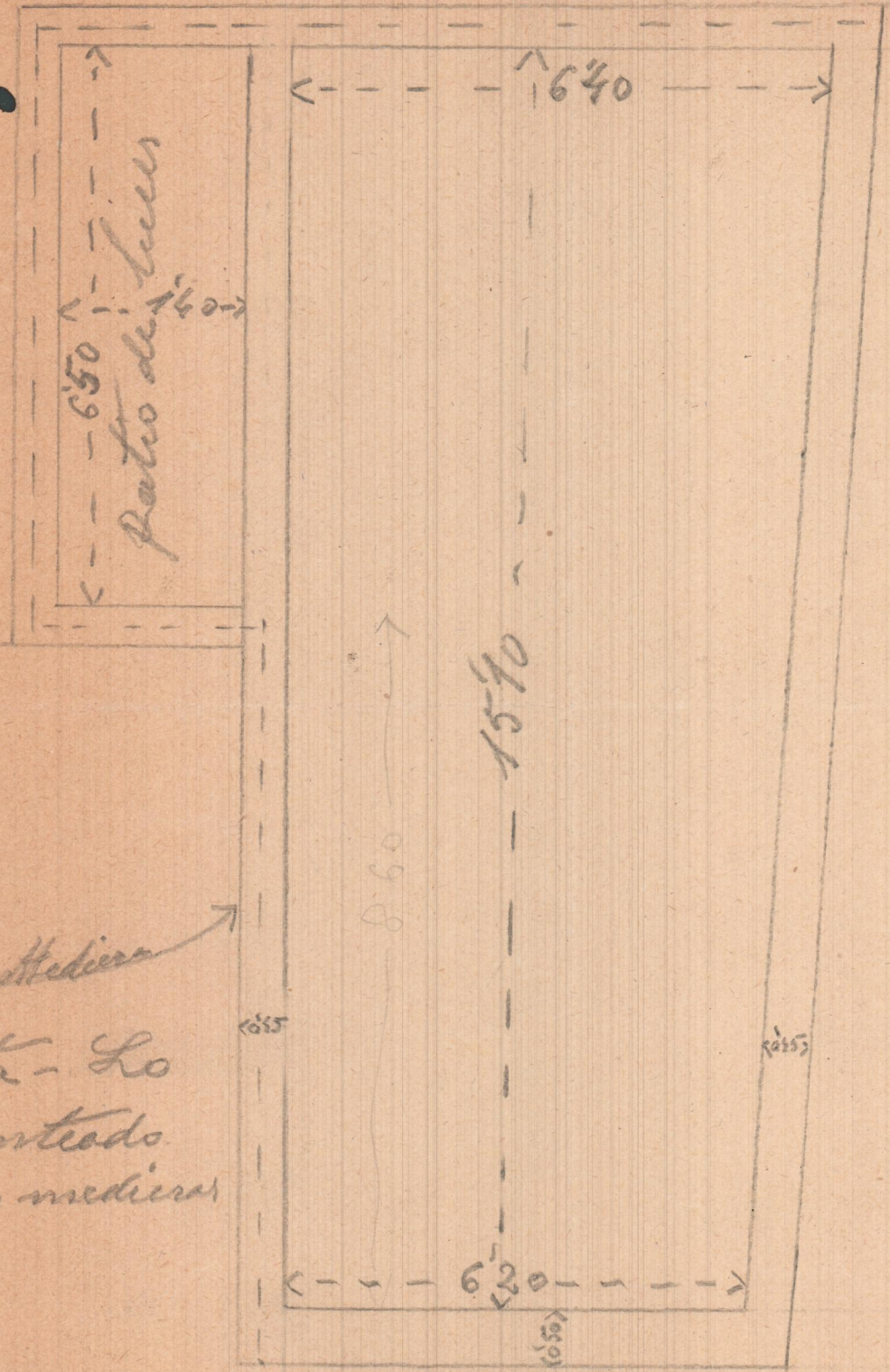


Benavente - 1-3-45

(per) lentes

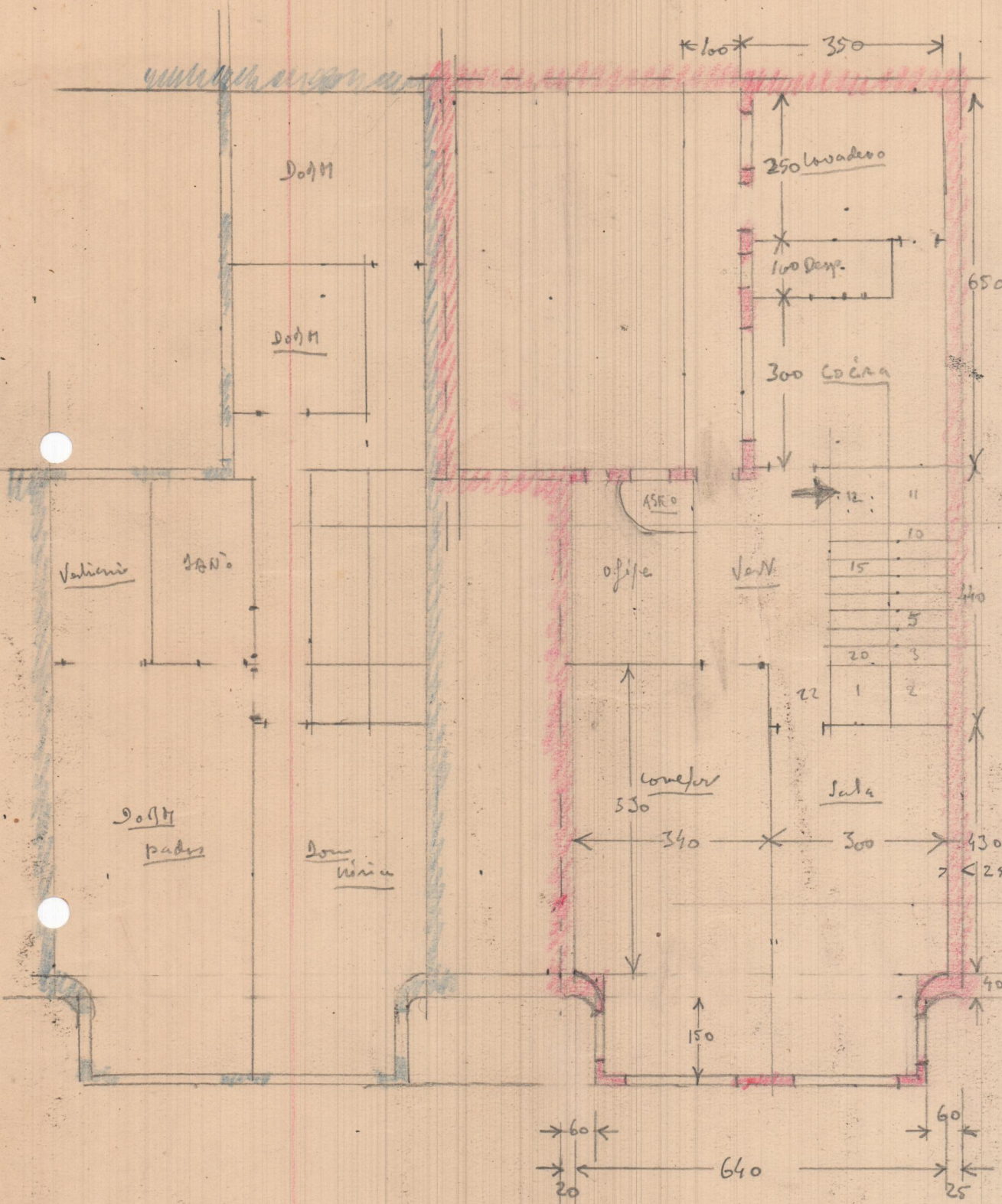






Mediana
 Nota - Lo
 puntado
 son medidas

15/0
 -50



60
25
35