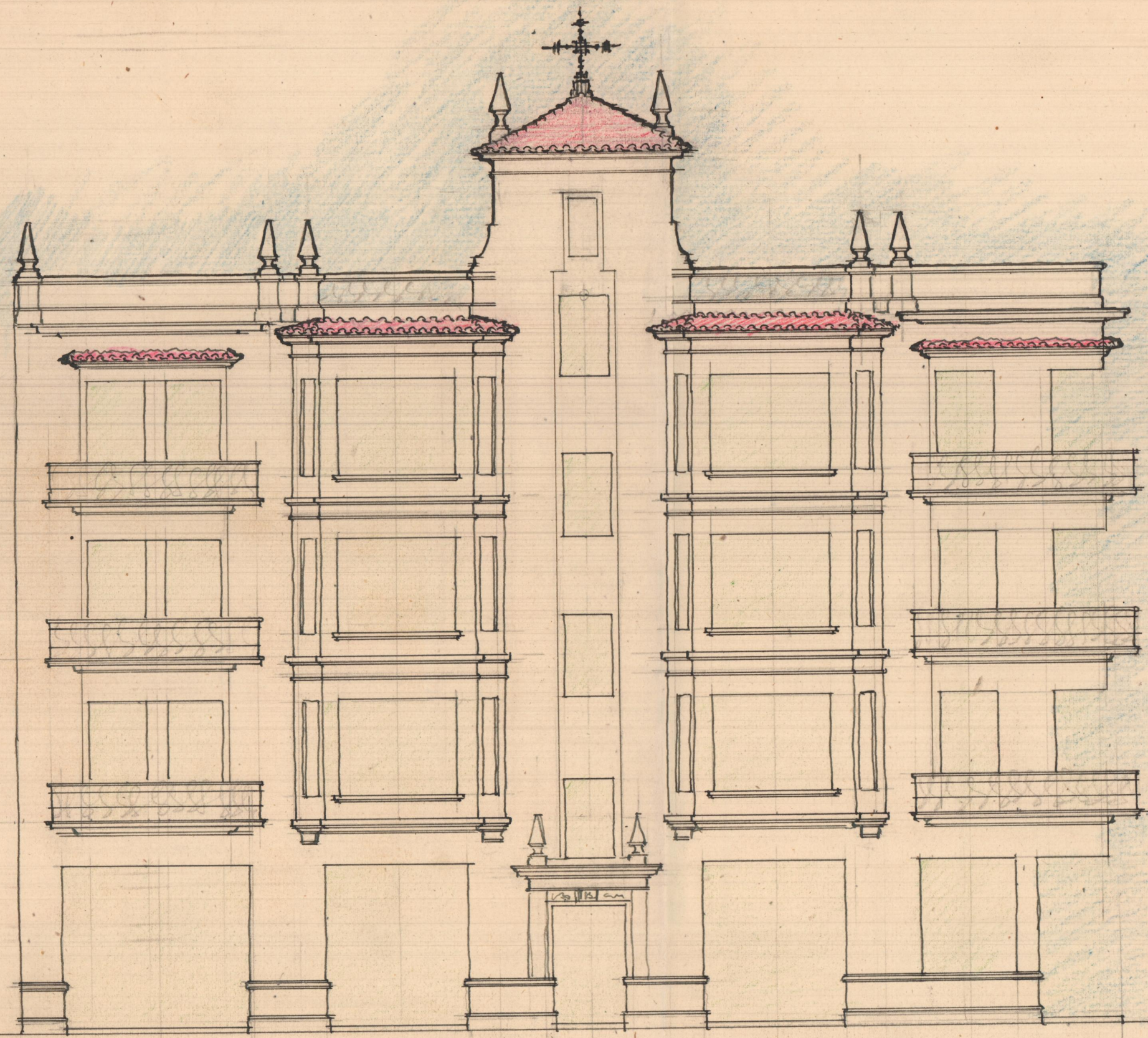
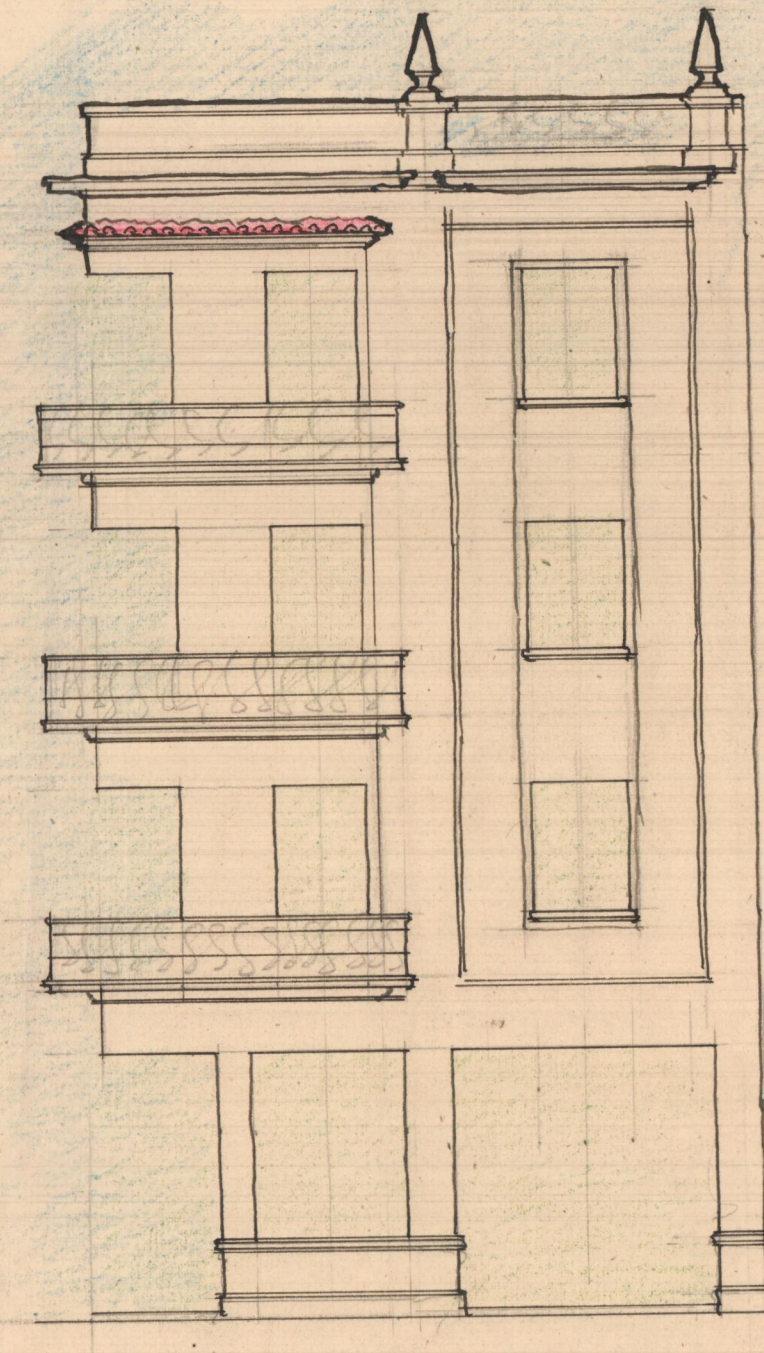


340
170

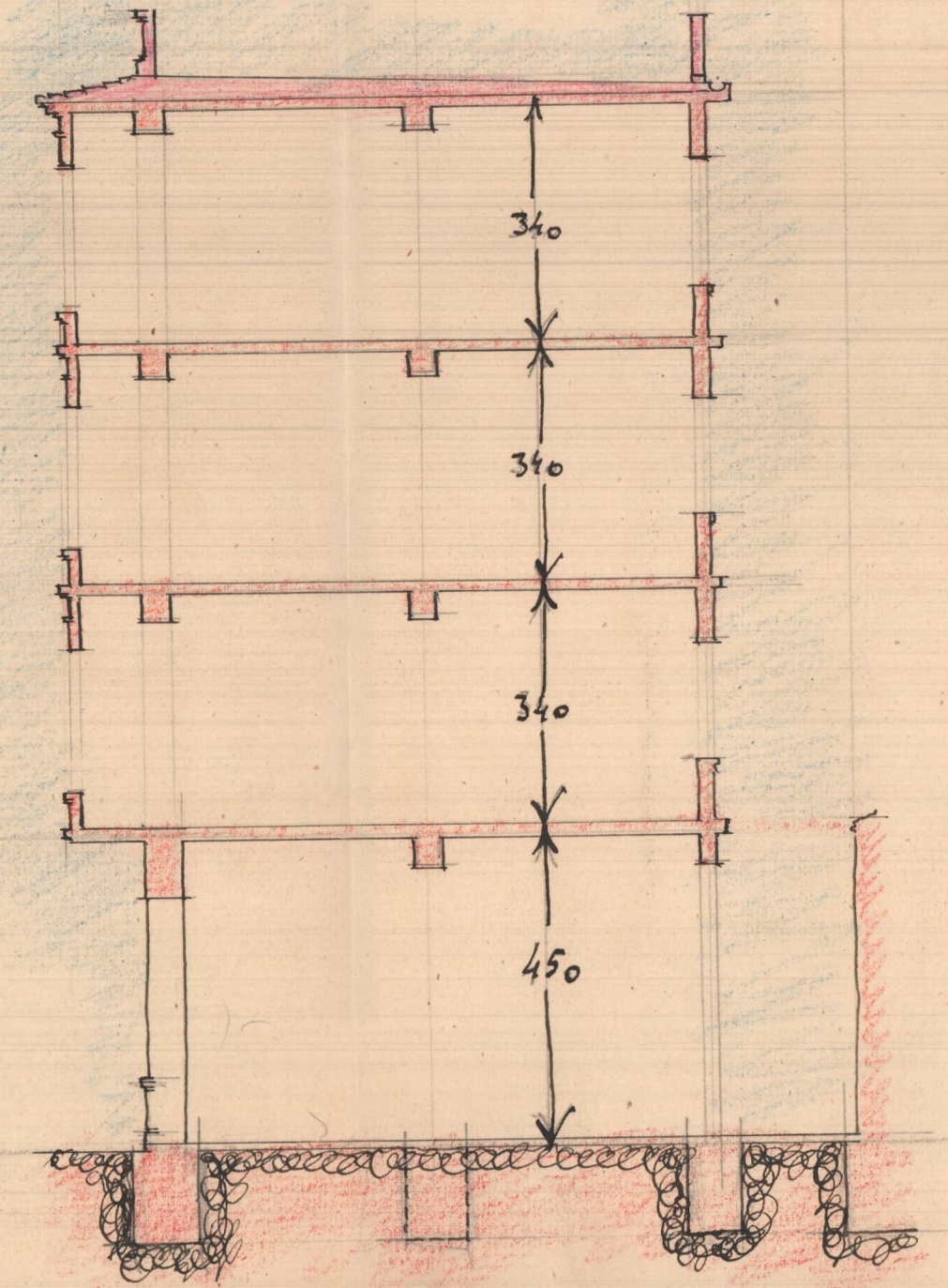
15'00"
210 x 19 1/2



FACHADA A LA NUEVA CALLA



FACHADA A LA CARRETERA

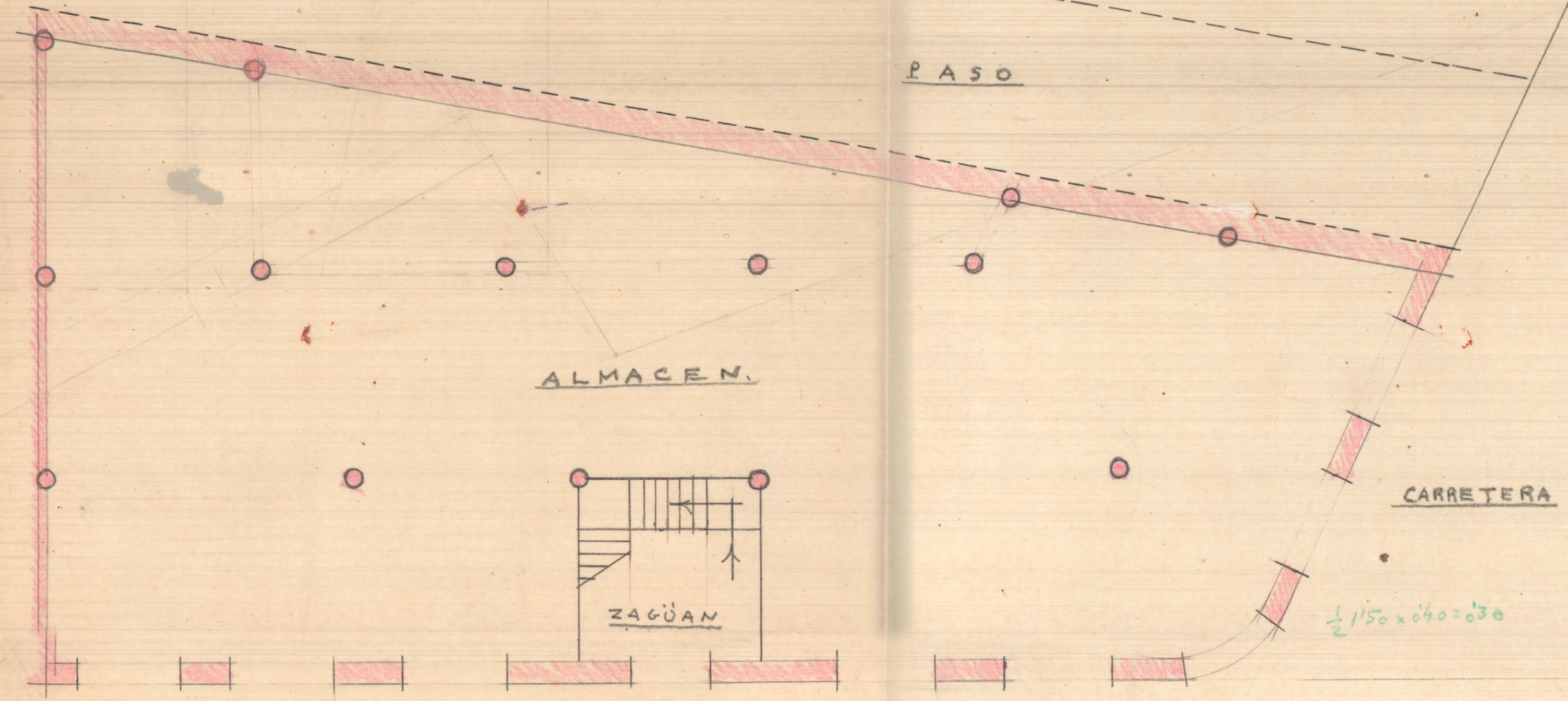


SECCION

PLANTA BAJA

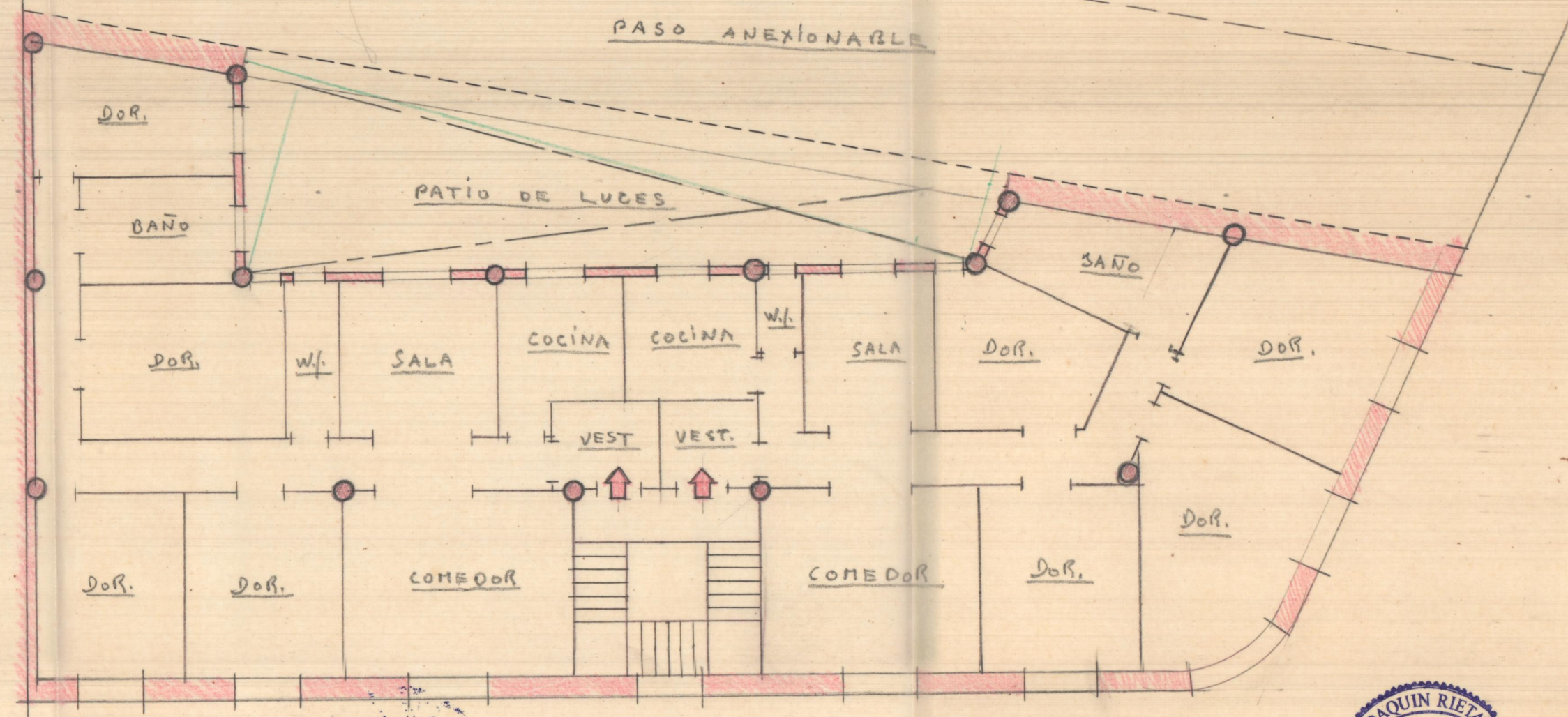
PISOS ALTOS

$\frac{1}{2} \cdot 1400 \times (380 + 100) = 200 \times 530 = 3710 \text{ m}^2$



CALLE N.º 38

CROQUIS
E-1:100



$\frac{1}{2} 1150 \times 040 = 030$