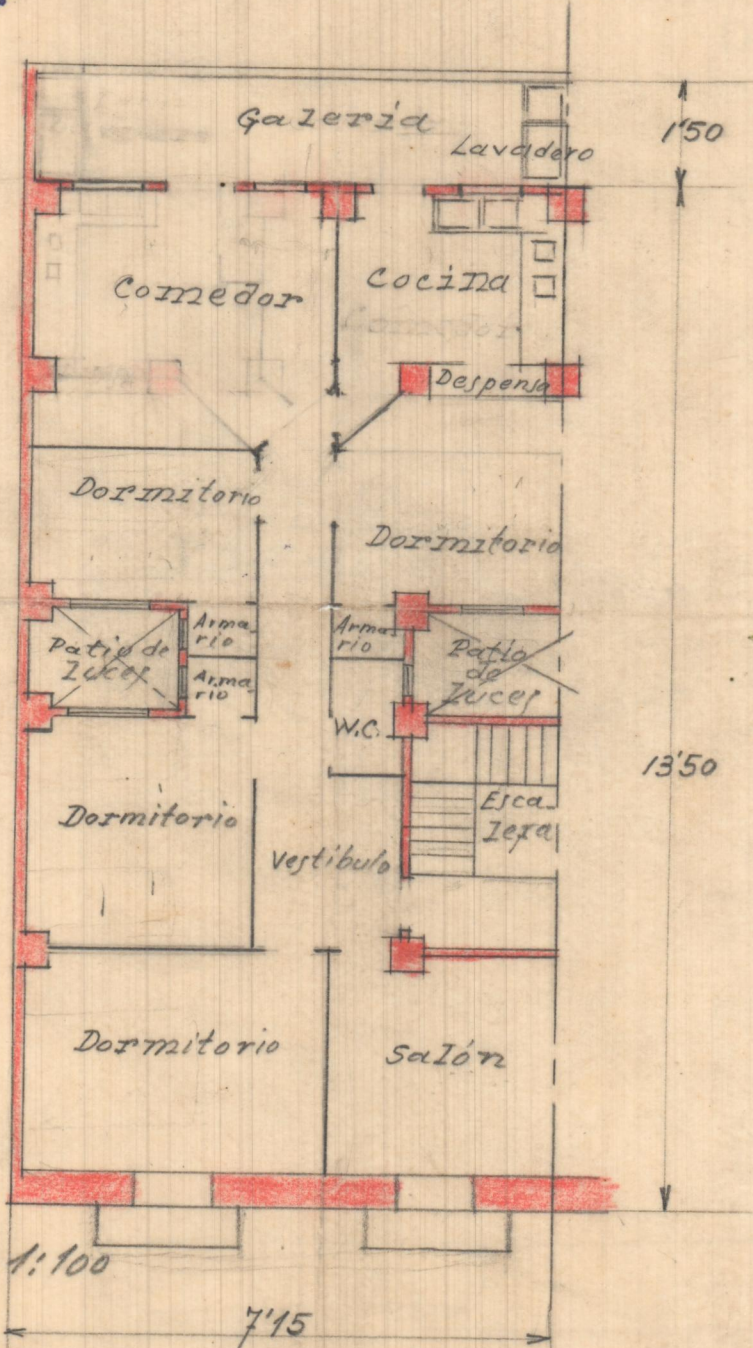




numero de pisos 4 pisos salidas y 12  
liberacion de los buques  
trabaja pueras de via



Escala 1:100

Salvini 7/7/1927

PLANTA GENERAL 716

Sup. edificada 96'66 m<sup>2</sup>

20% 19'33 m<sup>2</sup>

Pedios 5 m<sup>2</sup>

↑ 125

1350

Sala

Cuina

Comedor

San.

Sala

350 x 2

2 x 2

San.

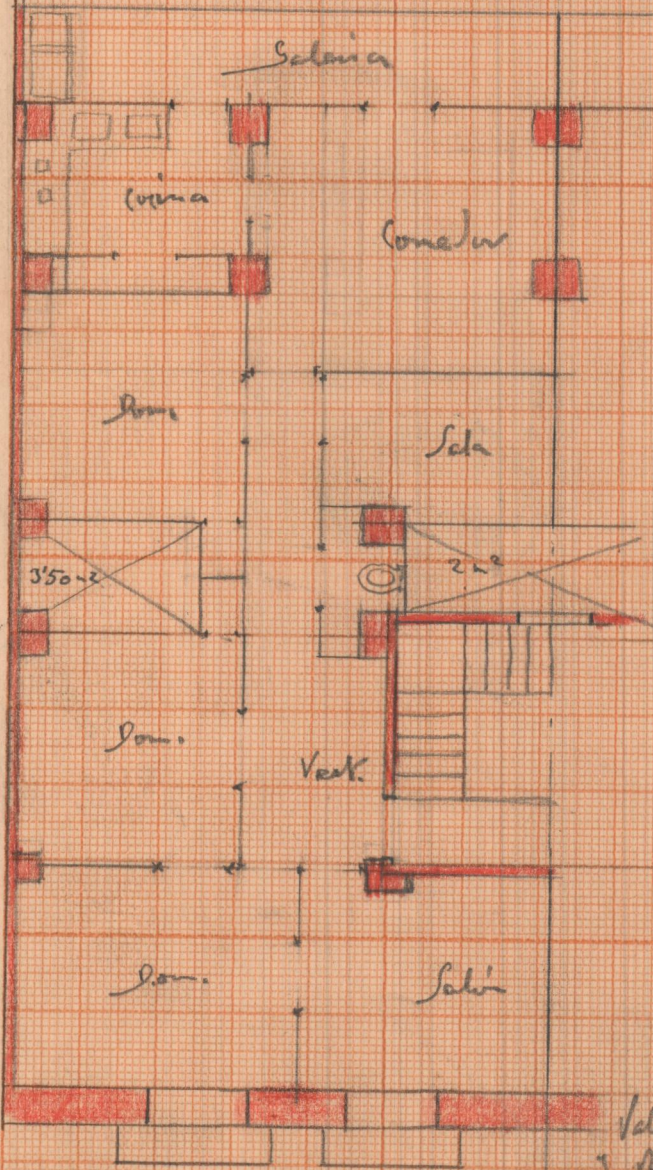
Vest.

San.

Sala

Valentín Aguilera 1977

J. M. B. [Signature]



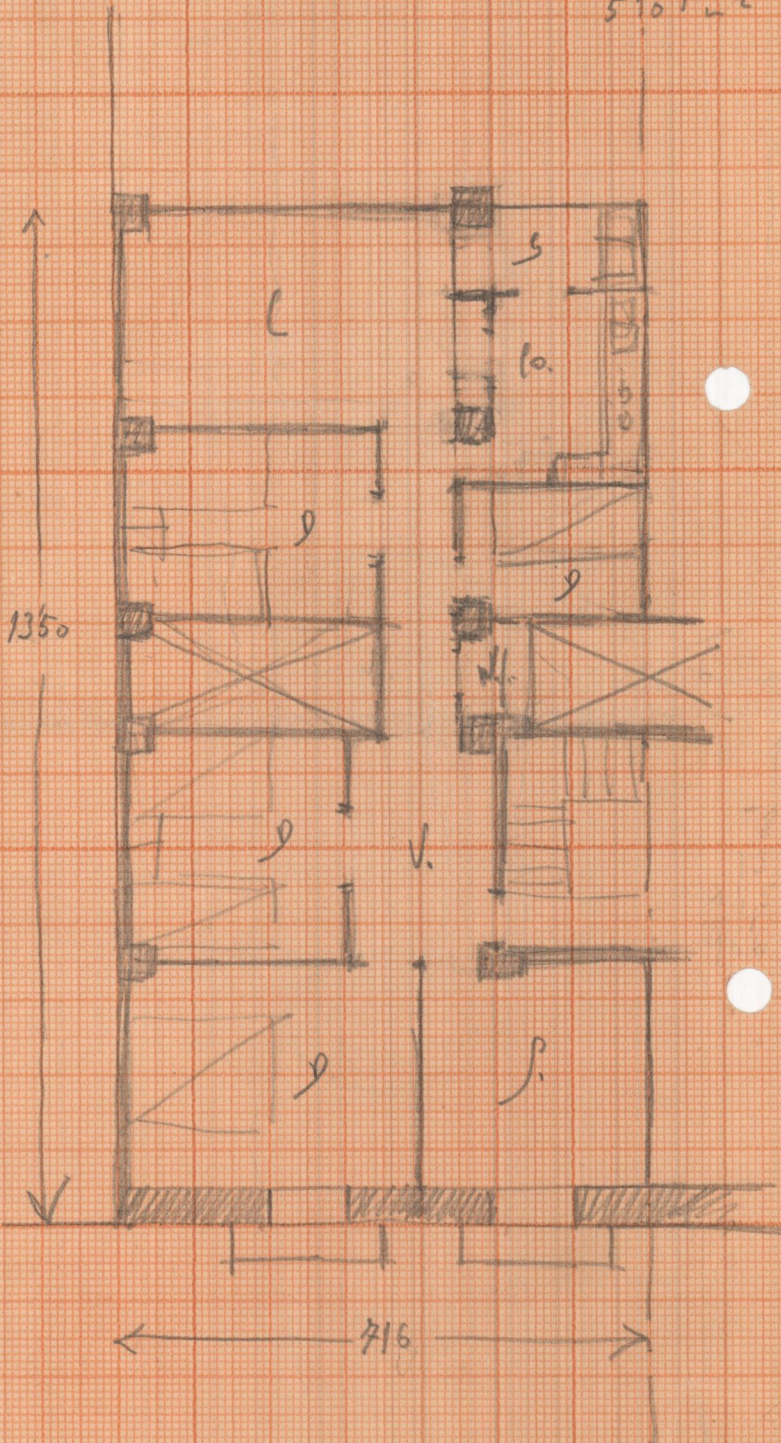


superficie edificada 10 00 m<sup>2</sup>

" petros } 20% 19'33 m<sup>2</sup>  
14'32  

---

5'01 m<sup>2</sup>





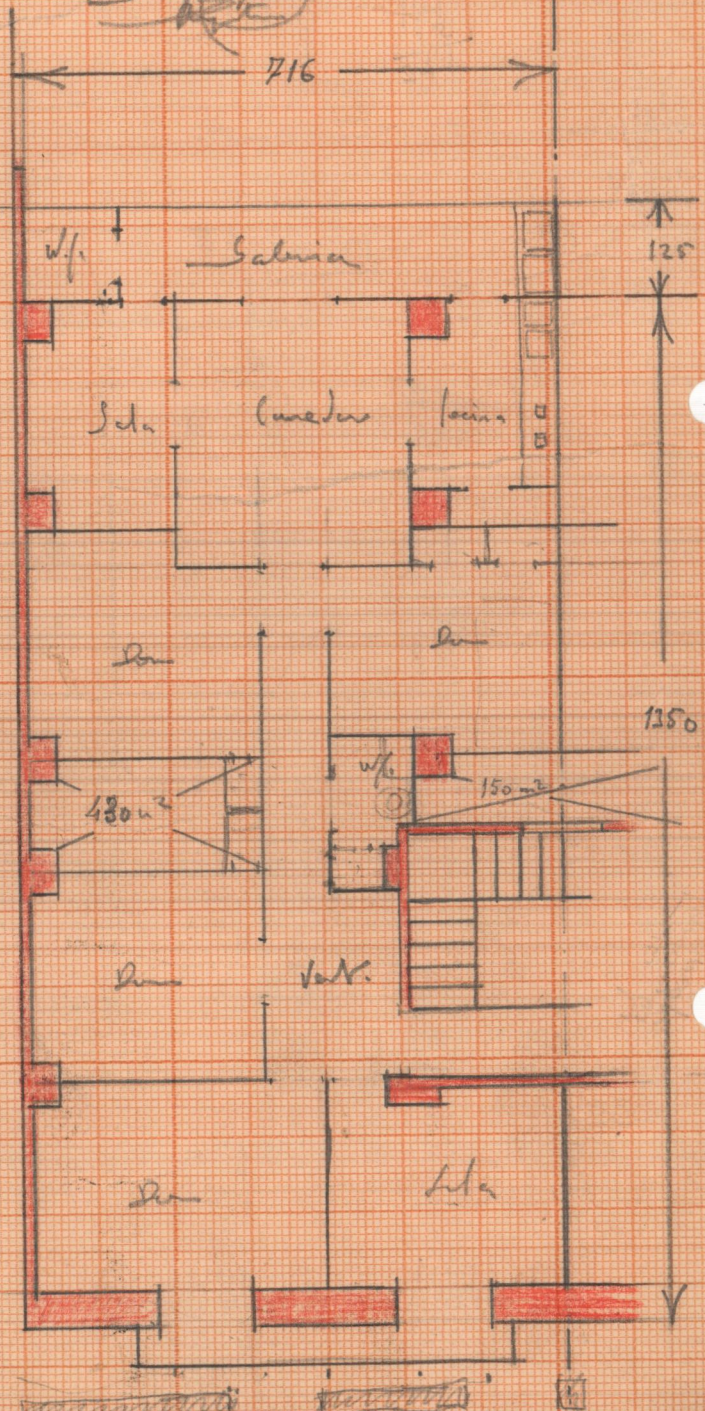
Casa Sr. Pastor

(A/A) VIVIENDA

RANTA

Valencia / Agosto / 1927

*[Handwritten signature]*

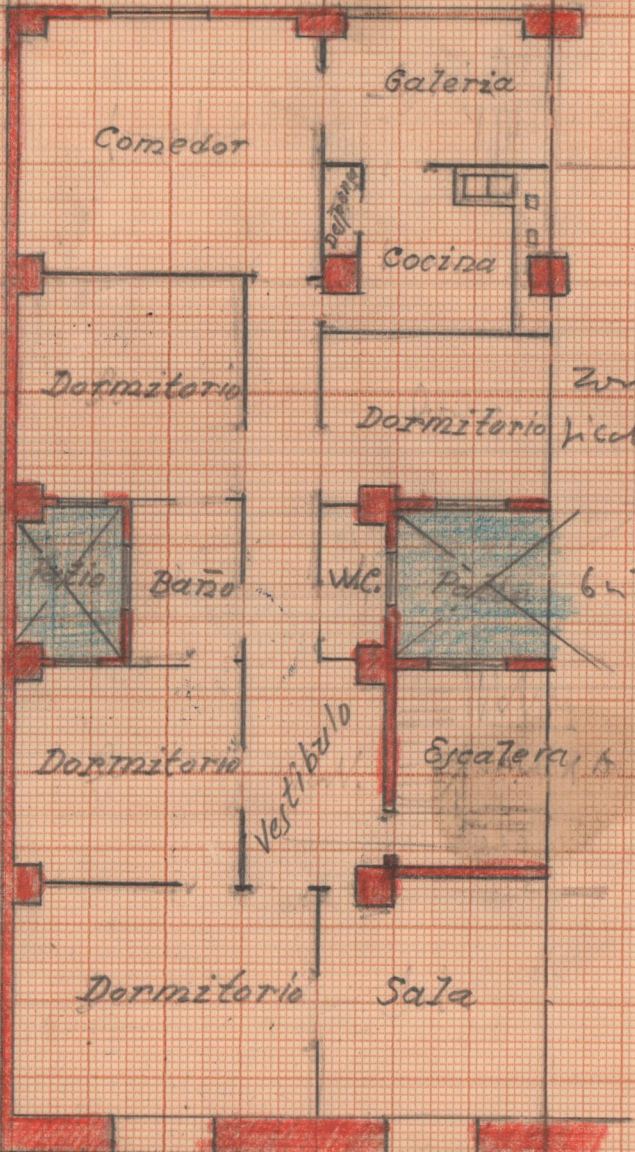




102125 m<sup>2</sup> edificados

(2)

7'150



15'00

3'5"

Zona edifi' cable 13'50'

6'5"

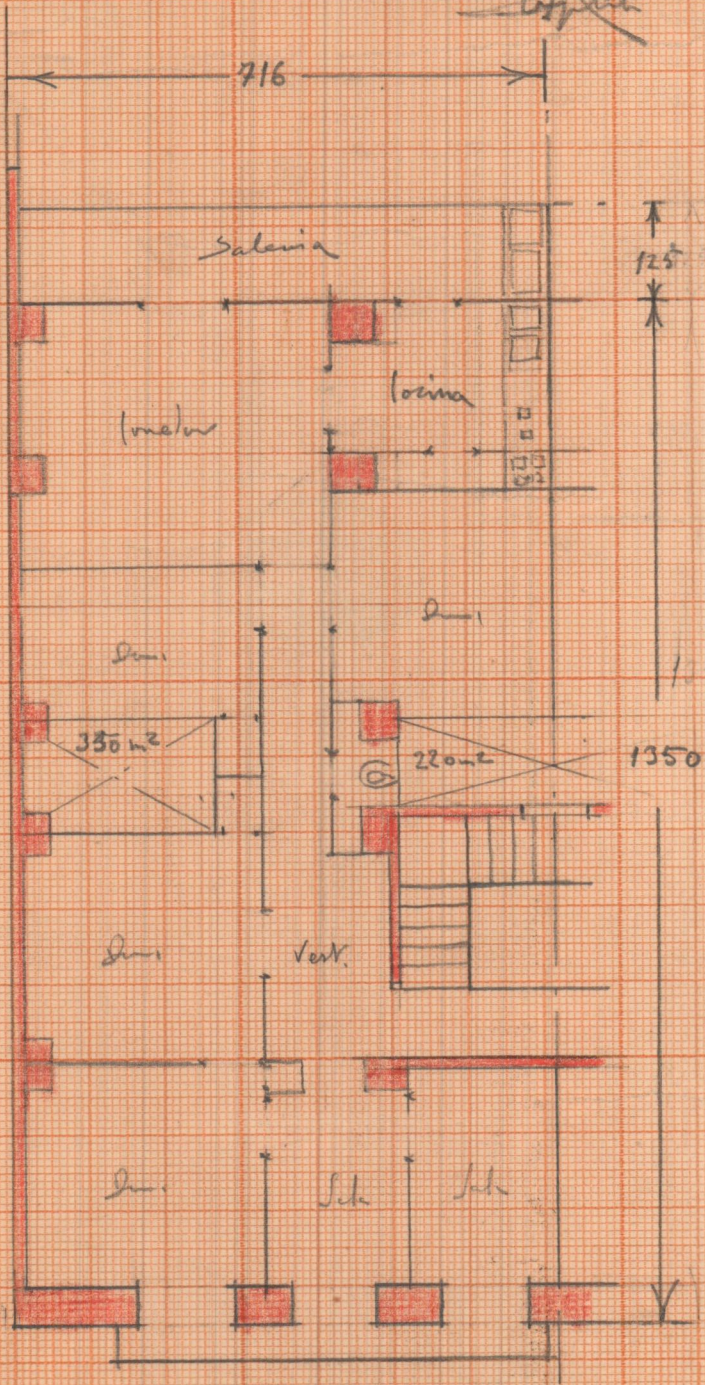
E/CALA 1'100

4/8/1927



CAJA VIVIENDA  
RANTA

Relatório Agosto/1972  
S. P. P. / ...  
...





193 m<sup>2</sup> edificados

20% - Jachas - 10 m<sup>2</sup> de gachas

