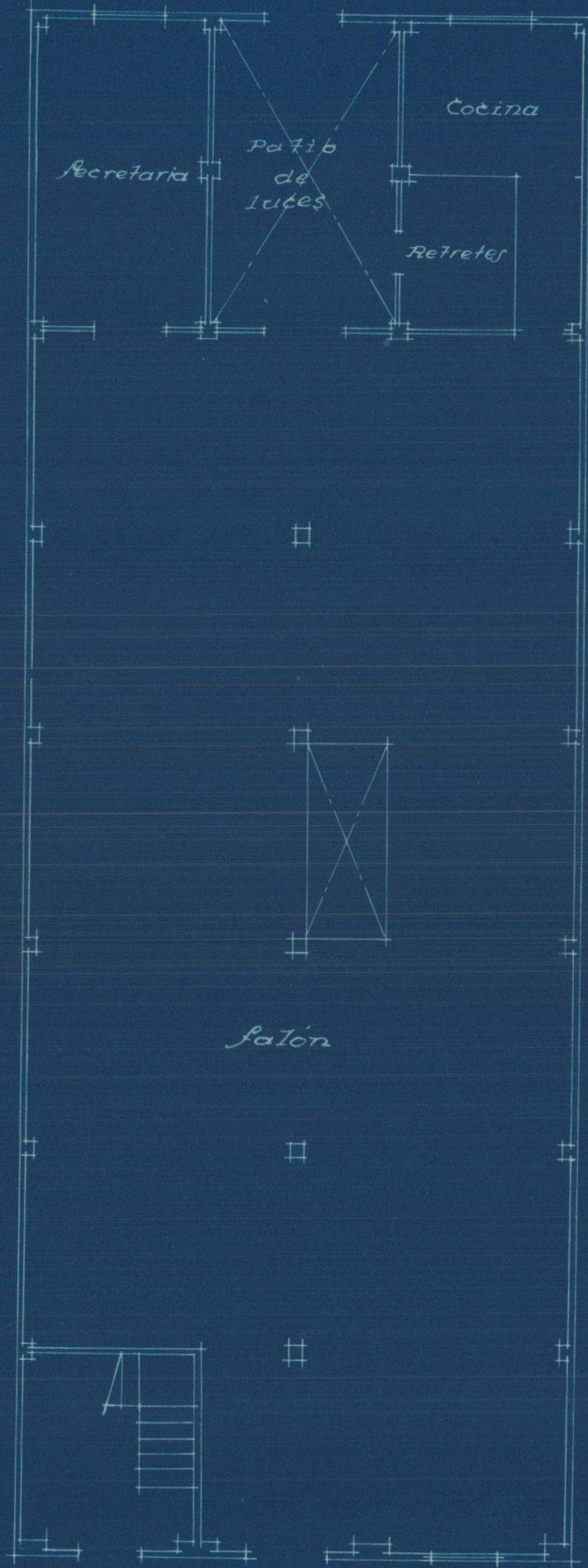
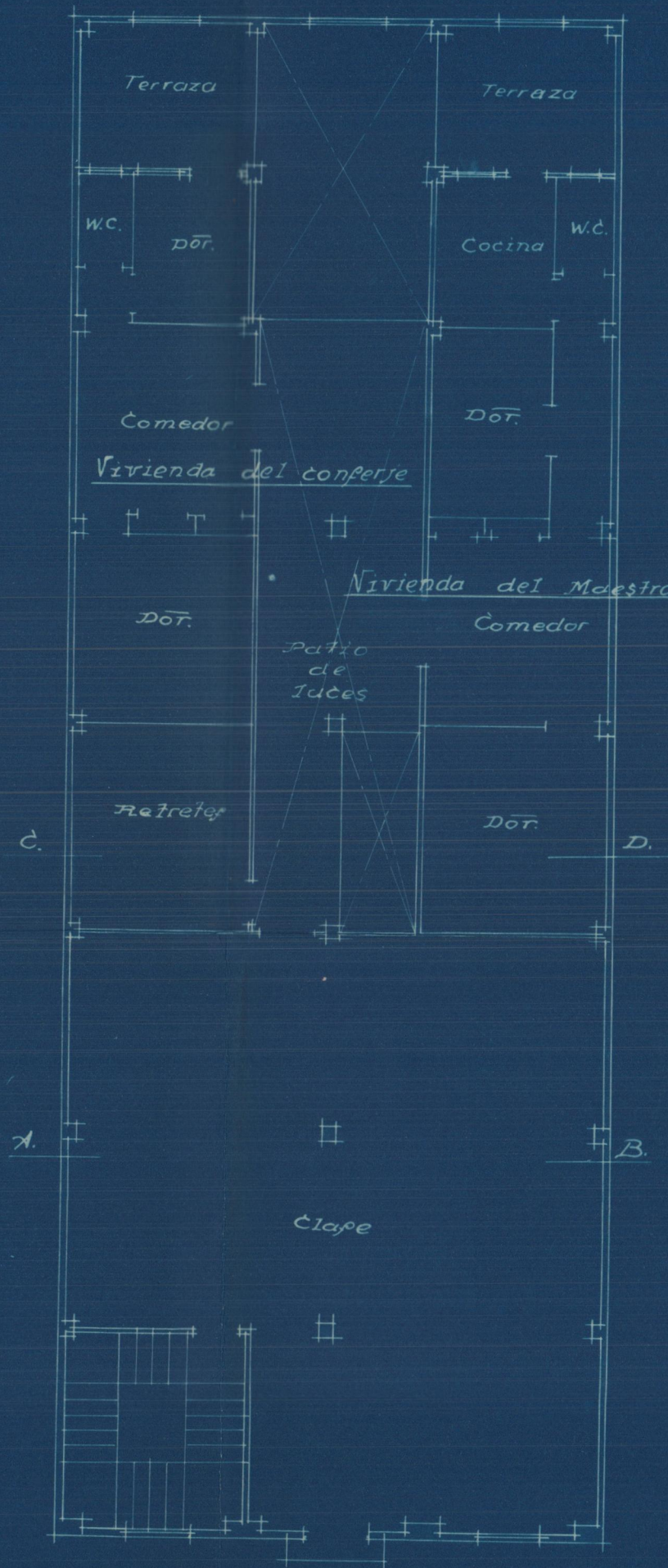


Local para escuela y capino republicano en Nazaret

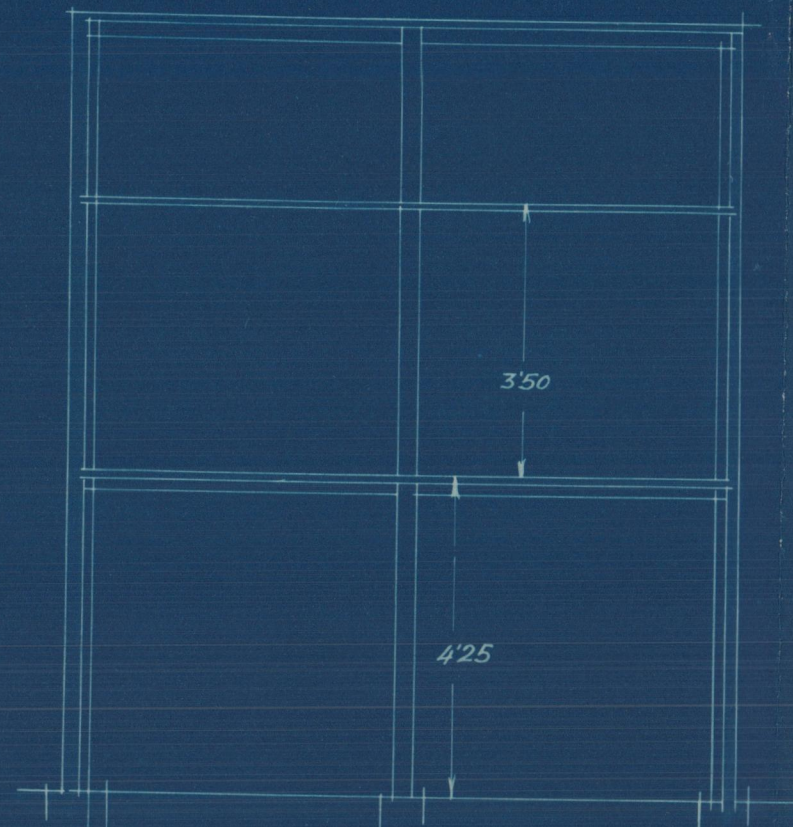
Fachada Alineada con la c. Mar alta



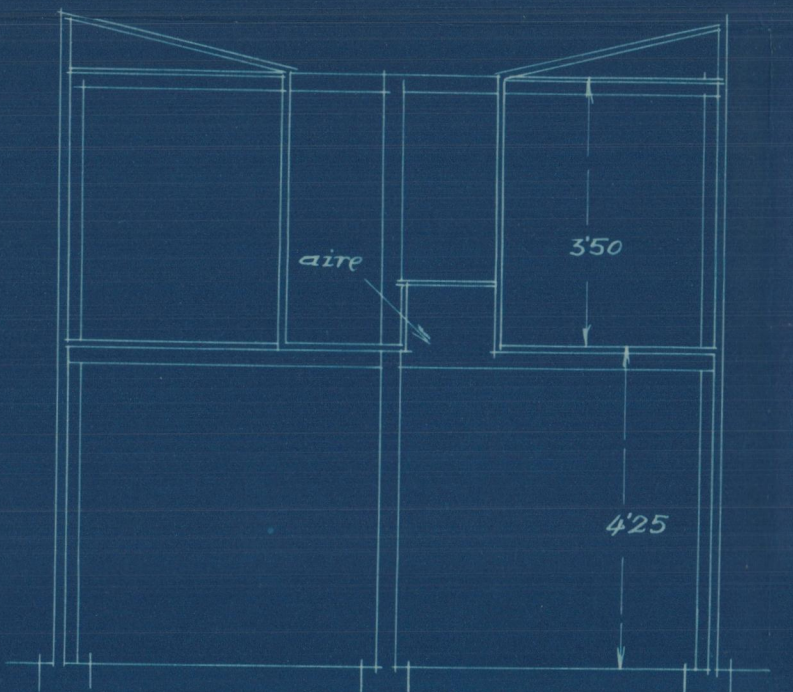
Planta baja
Calle Mayor



Planta alta

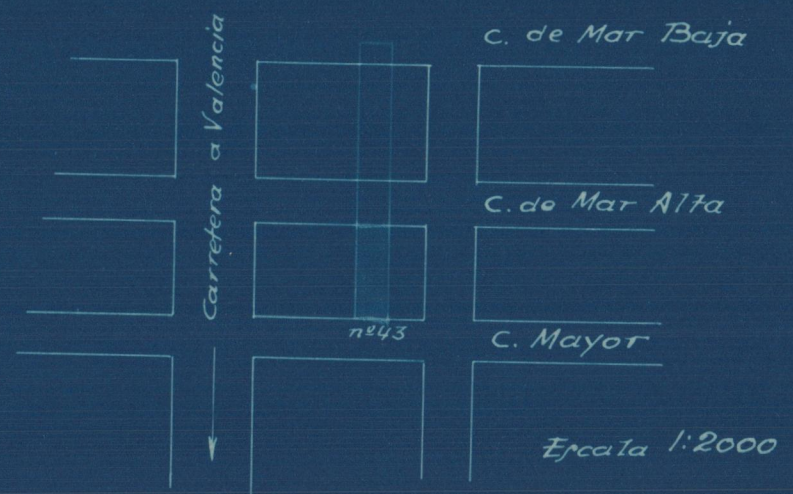


sección A.B.

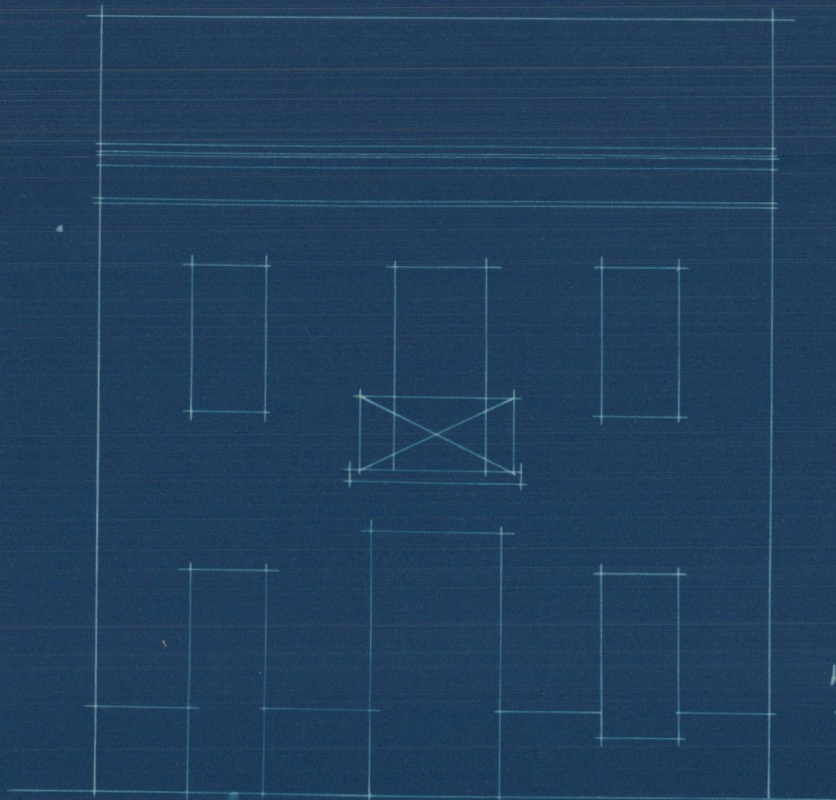


sección C.D.

Piano de emplazamiento



Escala 1:2000



Fachada
Calle Mayor

Escala 1:100
Valencia 11 Mayo 1931
El Arquitecto