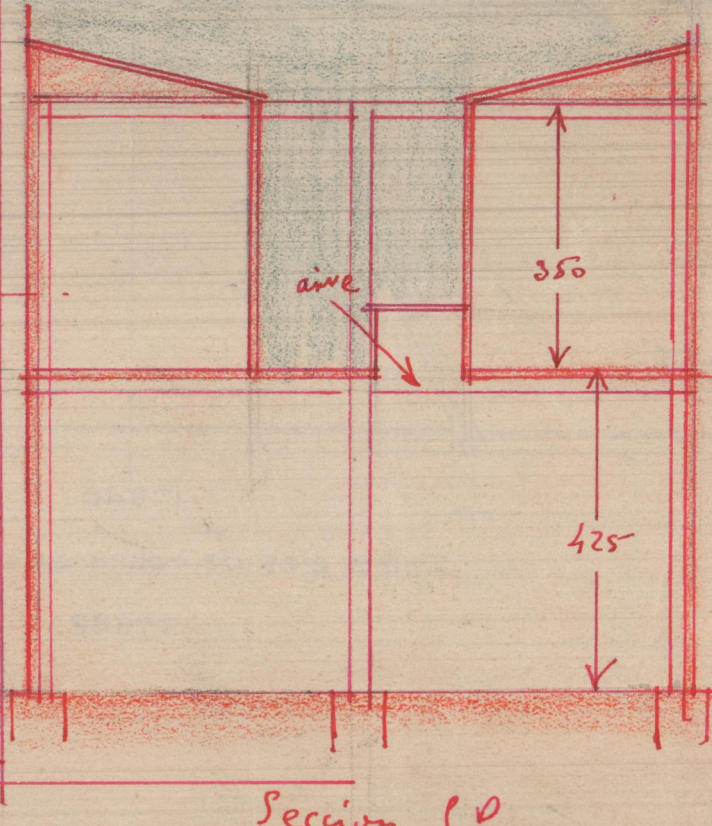
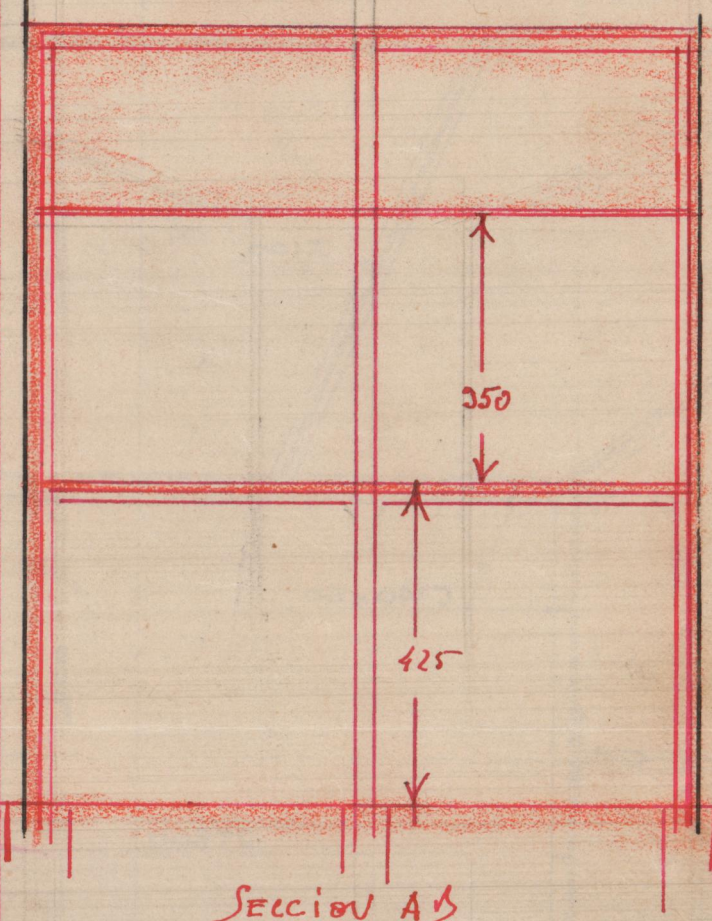
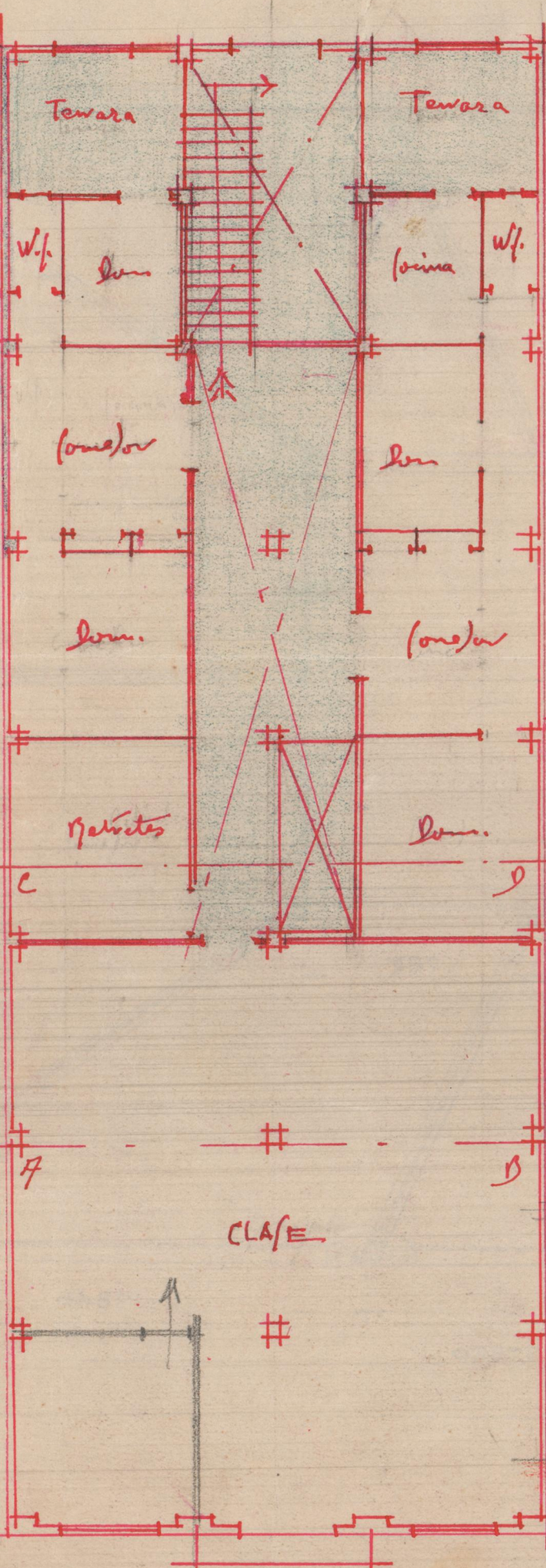


Repúblicano
 LOCAL PARA PAISAJE Y ESCUELA EN NAZARET



Hoja ALTO

E. 1:100

Jardín

Kepij = dua pilar 020 x 020

Pijar

$$4'45 \times 325 \times 400 \times 2 = 11568 \text{ Kg.}$$

Pemampiran

$$0'2 \times 0'20 \times 10 \times 2400 = 960 \text{ u}$$

$$\text{Total } 12528 \text{ Kg.}$$

limielu

$$\text{à } 1 \text{ Kg./m}^2 \quad 13000 \text{ m}^2$$

$$115 \times 115$$

Pilar

$$0'20 \times 0'20 = 400 \text{ m}^2$$

$$\text{à } 50 \text{ Kg./m}^2 \quad 20000 \text{ Kg.}$$

(per pando)

Jalena de 4'50 - luz

$$\eta_p = \frac{P l^2}{8} = \frac{325 \times 400 \times 4'5 \times 450}{8}$$

$$= 32900 \text{ Kg. cm.}$$

$$\eta_p = \frac{329000}{1000} = 329 \text{ cm}^3$$

2450

Perfil acero I n° 24, $\eta_p = 354 \text{ cm}^3$

$$\text{Alcha } \frac{1}{500} \text{ luz}$$

$$\frac{450}{20'6} = 31'84 \text{ cm. altura}$$

luz

$$\eta_w = \frac{1000 \times 325 \times 325}{8} =$$

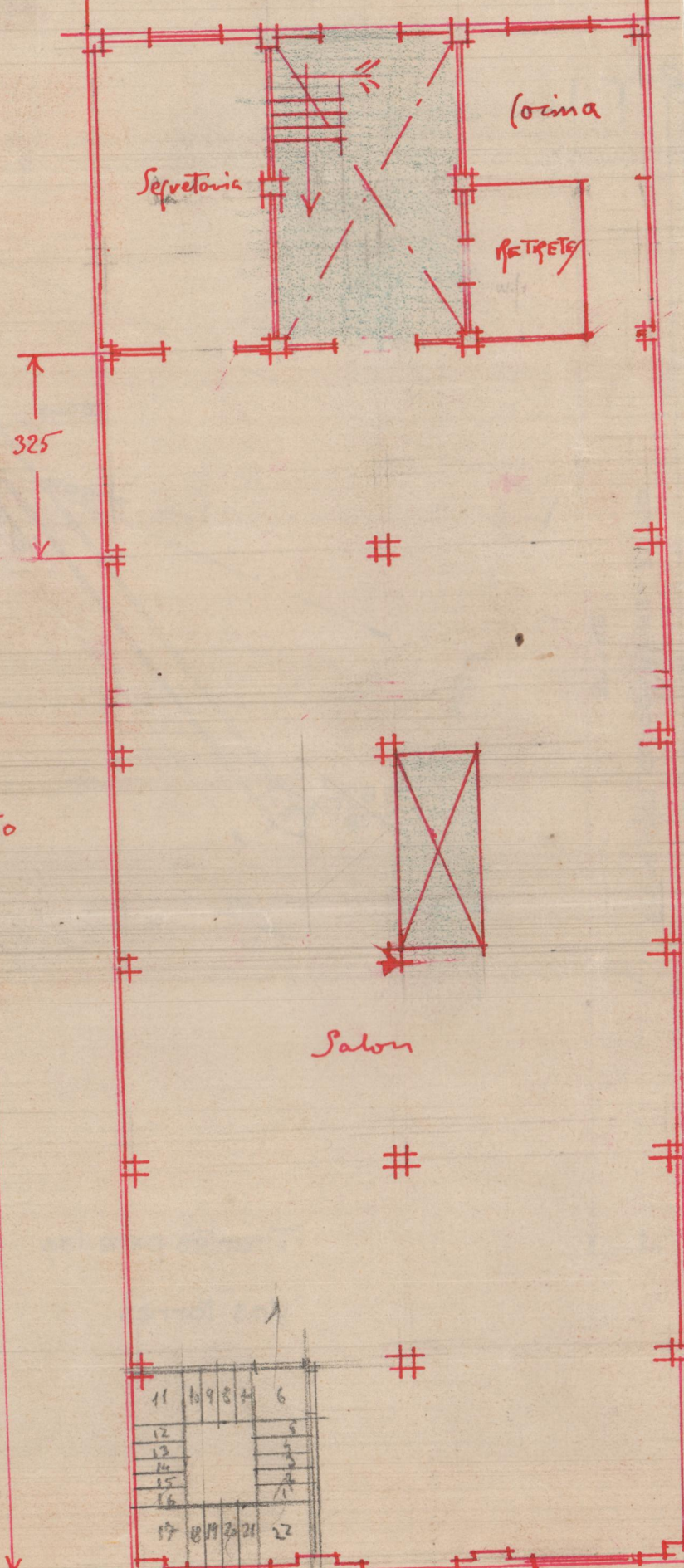
$$= 52812 \text{ Kg. cm.}$$

loja bantjan pan | 500 Kg m. klam
300 Kg. anela

Amuden ceterah $3'3 \text{ cm}^2$

$$\text{Alcha } \frac{1}{800} \text{ luz } = \frac{325}{20'6} = 15'70 \text{ cm.}$$

CALLE B ALTA MAR



11	10984	6
12		5
13		3
14		2
15		1
16		1
17	81920	22

470 CALLE 165 MAYOR 100

890

PANTA Saja