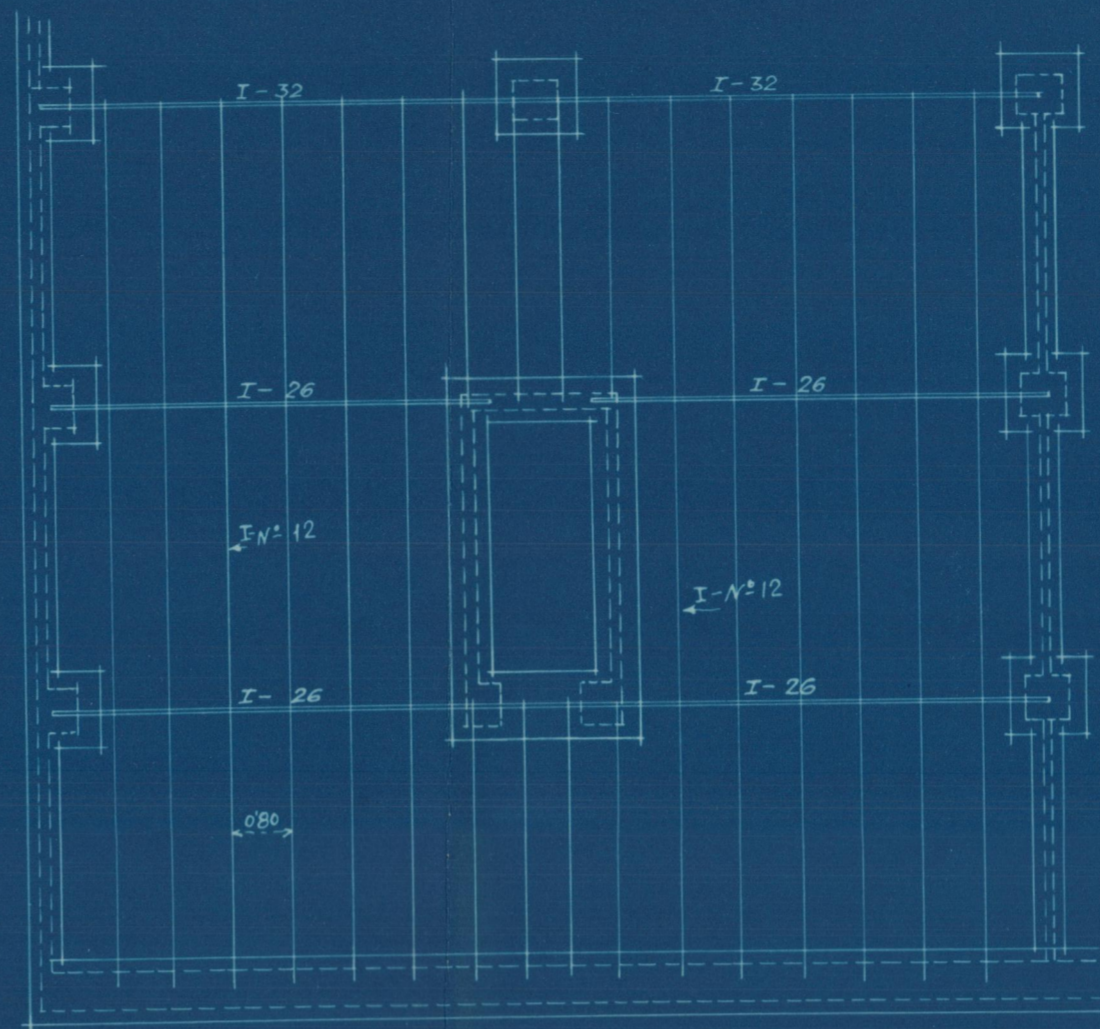
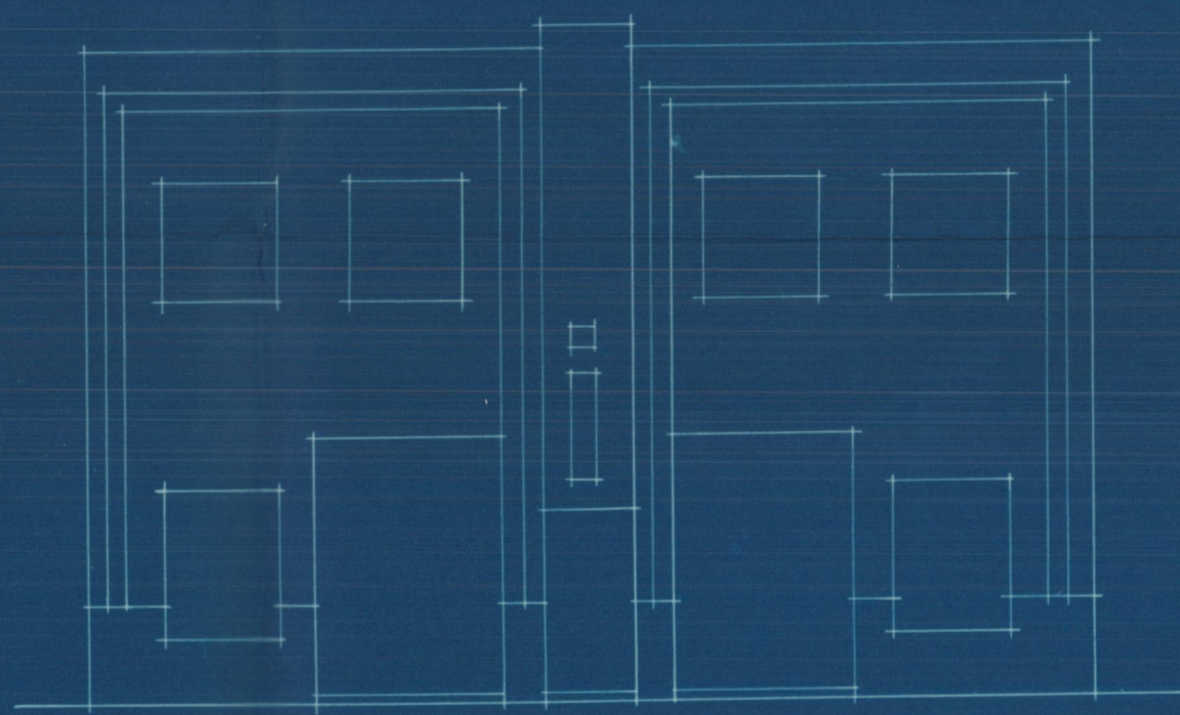
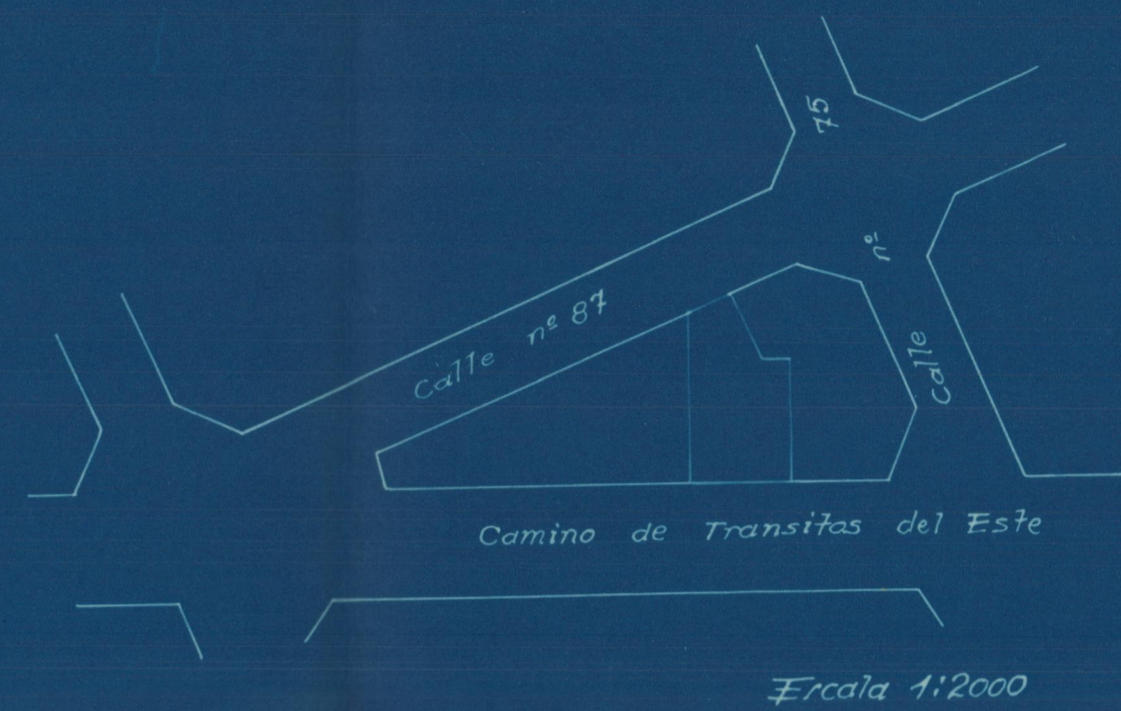


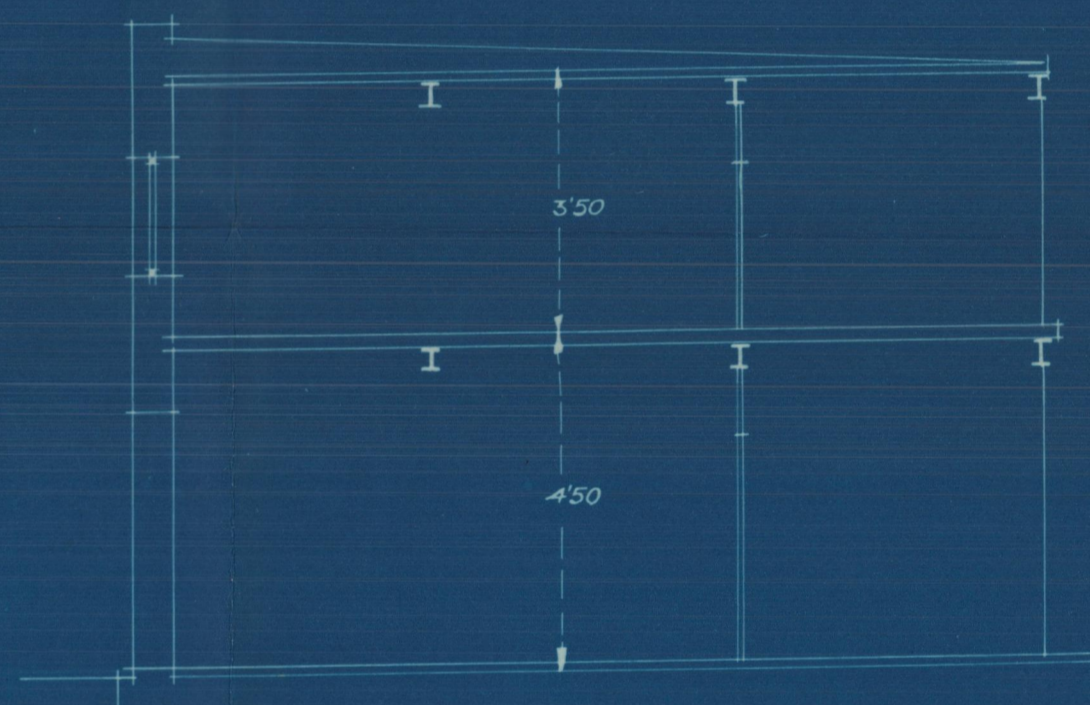
*Proyecto de viviendas*  
*Camino de Transitos del Este*



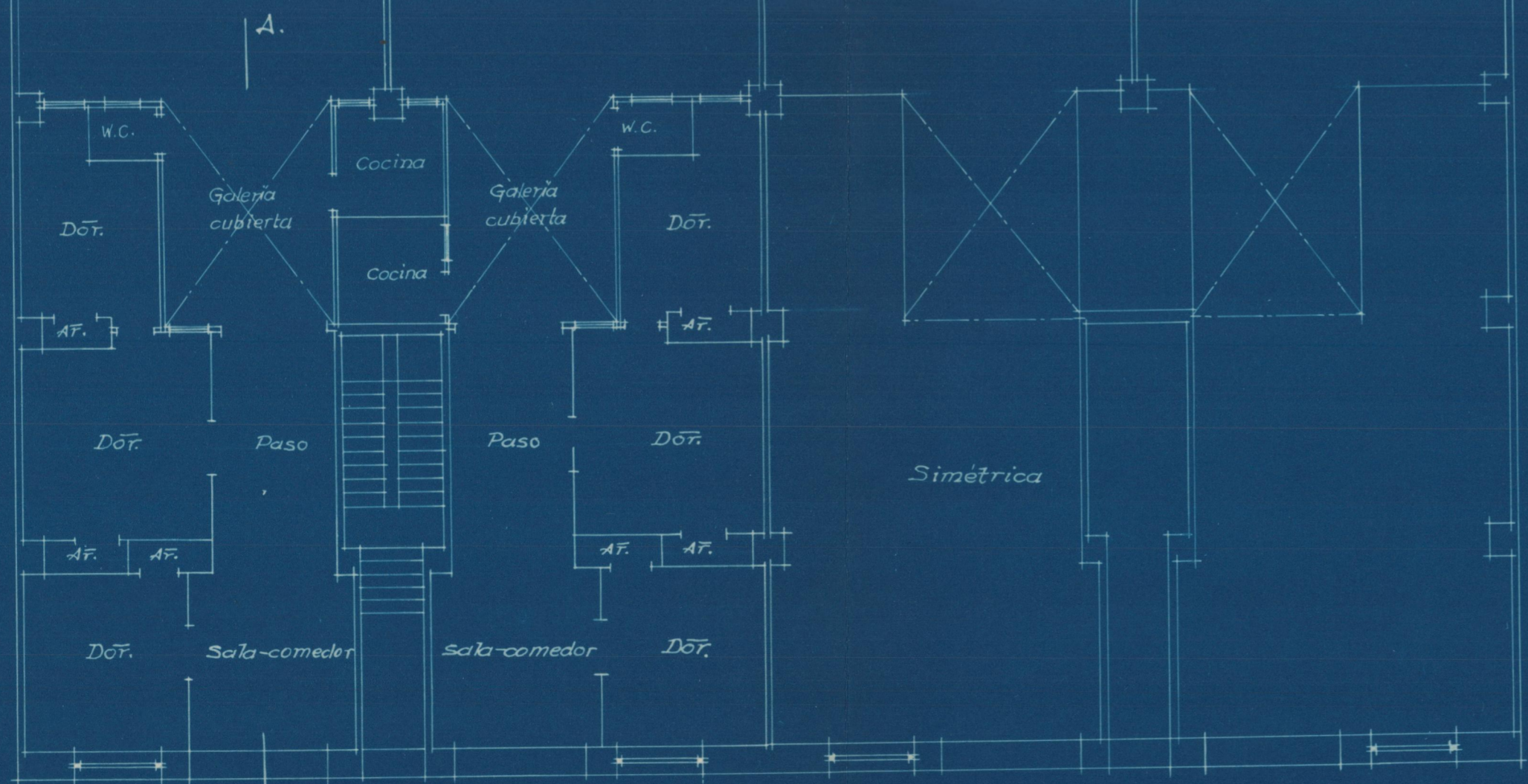
*Planta de cimientos y entramados*



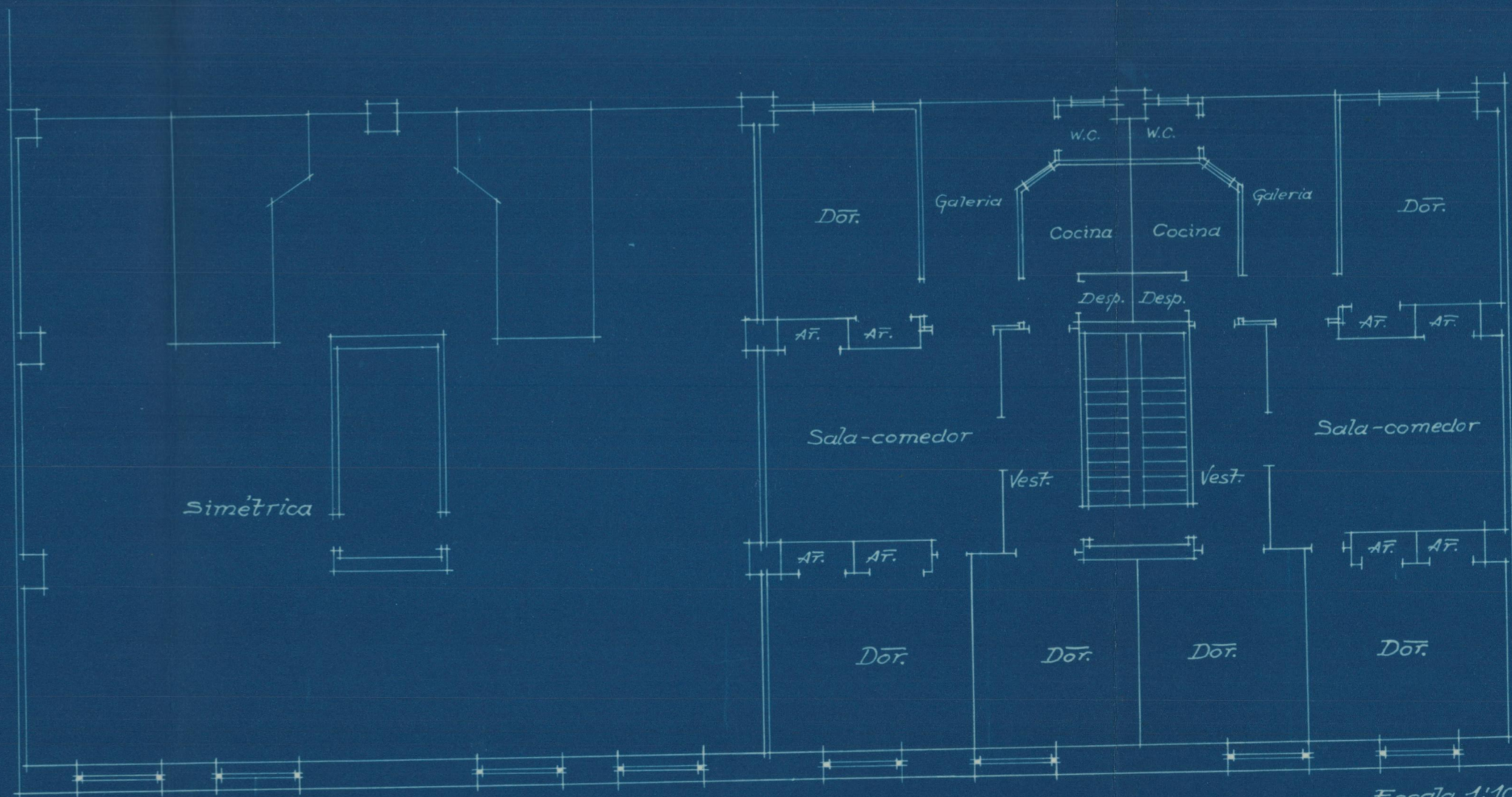
*Fachada común*



*Sección A.B.*



*Planta baja*



*Planta del piso alto*

*Escala 1:100*  
*Valencia 6, Dibre. 1935*  
*El Arquitecto.*

*[Signature]*