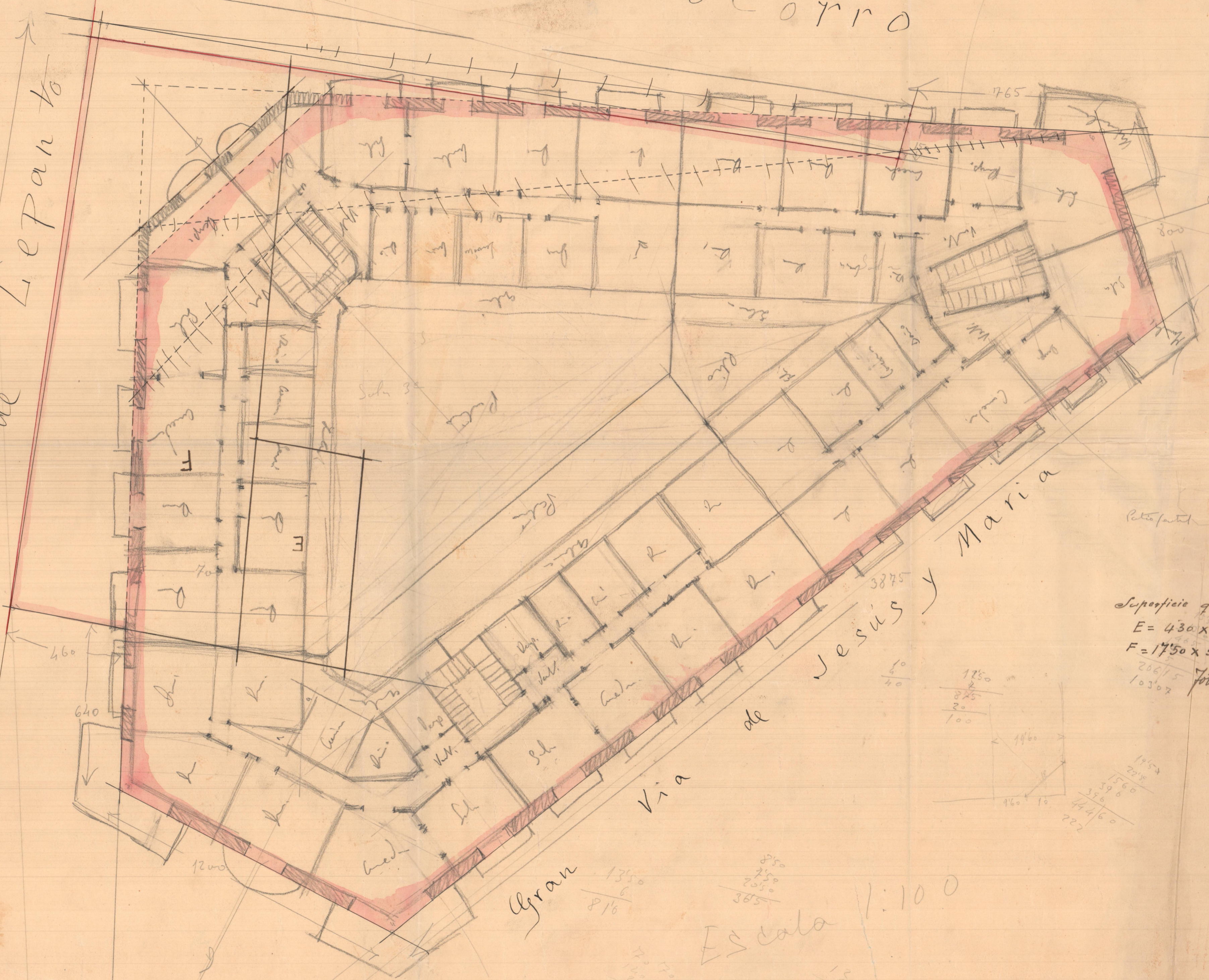


Calle del Socorro

5'80
1'80
1'260
3'840
7'77

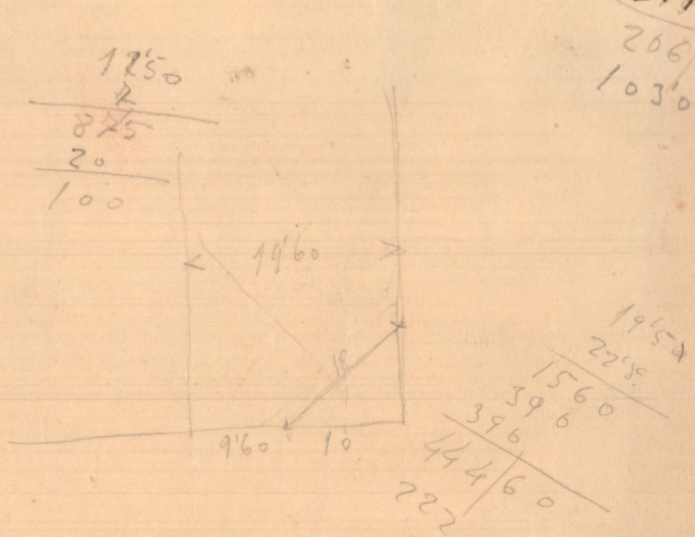
Calle de Lepanto



Superficie
 $A = \frac{28'90 \times 42'30}{2} = 1034'2$
 $B = \frac{10 \times 5'10}{2} = 25'50$
 $C = \frac{8 \times 10'40}{2} = 41'60$
 $D = \frac{12 \times 13'10}{2} = 78'60$
 Total deducir 1457'70 =

Superficie total 888'53 m²
 Patispartel 25% 222'66 m²
 Zona edificable 2'00 m.l.
 Superficie 666'37 m²

Superficie que resta al Horno
 $E = 430 \times 8'35 = 35'905 \text{ m}^2$
 $F = 17'50 \times 5'00 = 87'500 \text{ m}^2$
 Total = 123'405 m²



Gran 1350
 816

Escala 1:100

donde
 comedia
 como
 sala
 recibiendo
 mio