

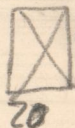
Labirata

vignettes de 3x9 pages à 60c.

Jacques Preliminary

$$\frac{1}{2} 650 \times 450 \times 250 = \frac{1}{2} 7312 = 3656 \text{ kg.}$$

2000 gachas



30 : 8x12 pages

Jacques central

2312 kg 2000 gachas



40

30x40 : 12x16 pages

Pilars mediana

$$V_{\text{mp}} = \frac{4'50}{2} \times \frac{17'5}{2} \times 400 \times 4 = 13500 \text{ Kg}$$

$$\text{Perimetria} = 0'50 \times 0'50 \times 15 \times 1600 = 6000 \text{ u}$$

$$\frac{6000 \text{ u}}{19500 \text{ Kg}}$$

$$\text{de } 40 \times 40 = 1600 \text{ cm}^2 \text{ à } 10 = 16000 \text{ Kg}$$

$$\text{"} = 1600 \text{ cm}^2 \text{ à } 12 = 19200 \text{ u}$$

$$\text{de } 50 \times 40 = 2000 \text{ cm}^2 \text{ à } 10 = 20000 \text{ Kg}$$

$$\text{de } 50 \times 50 = 2500 \text{ cm}^2 \text{ à } 8 = 20000 \text{ Kg}$$

Pilars perimetria mediana

$$\text{de } 40 \times 50 = 2000 \text{ cm}^2$$

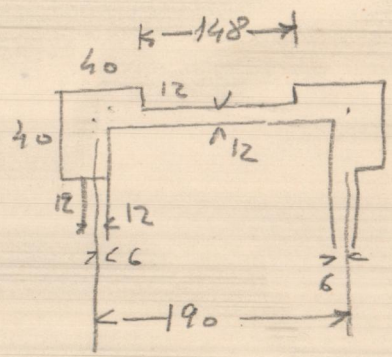
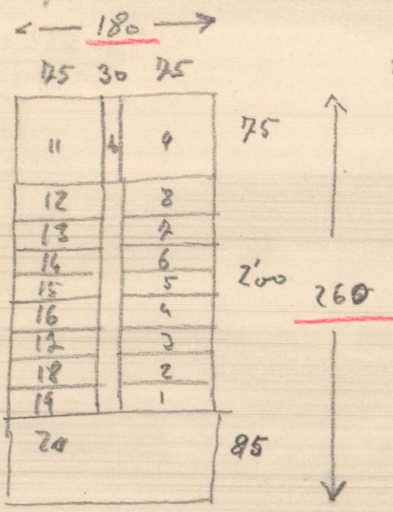
Pilha circular

$$V_{\text{mp}} = \frac{4'1}{2} \times \frac{4}{2} \times 400 \times 4 = 12600 \text{ Kg}$$

$$\text{Perim de } 50 \times 60 \times 15 \times 1600 = 7200 \text{ u}$$

$$\frac{7200 \text{ u}}{24800 \text{ Kg}}$$

$$\text{de } 50 \times 60 = 3000 \text{ cm}^2 \text{ à } 8 \text{ Kg} = 24000 \text{ Kg}$$

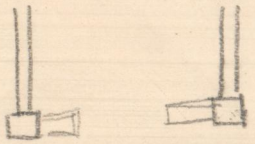


$$40 \times 25 = 1000 \text{ cm}^2$$

$$15 \times 25 = 375 \text{ u}$$

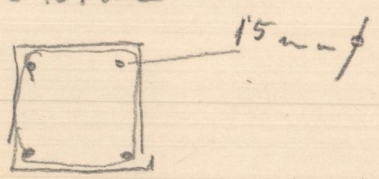
$$148 \times 12 = 1776 \text{ u}$$

$$\frac{1776 \text{ u}}{2751 \text{ cm}^2}$$



$$25 \times 25 = 625 \text{ cm}^2 \text{ à } 30 =$$

$$\text{à } 30 = 18750 \text{ cm}^2$$



Edificios foros Guilt

Arquitectura Avenida de Adolfo Beltrán

Pisos adosado

$$4 \times \frac{5'60}{2} \times 4 \times 400 = 17920 \text{ a } 3 \frac{1}{2} \text{ u}^2$$
$$= 5970 \text{ u}^2 \text{ a } \underline{1'00 \times 1'00}$$

Pila aislada

$$4 \times 5'60 \times 4 \times 400 = 35840 \text{ a } 3 \frac{1}{2} \text{ u}^2$$
$$= 11946 \text{ u}^2 \text{ a } \underline{1'20 \times 1'20}$$

Fachah

\_\_\_\_\_ ancho = 1'00

Mediosena

\_\_\_\_\_ " = 0'20

\_\_\_\_\_

Profundidad fuste = 1'30 u.

Arquitectura caja escalera

\_\_\_\_\_

profundidad = 1'20

Pisly

profundidad = 1'40

