

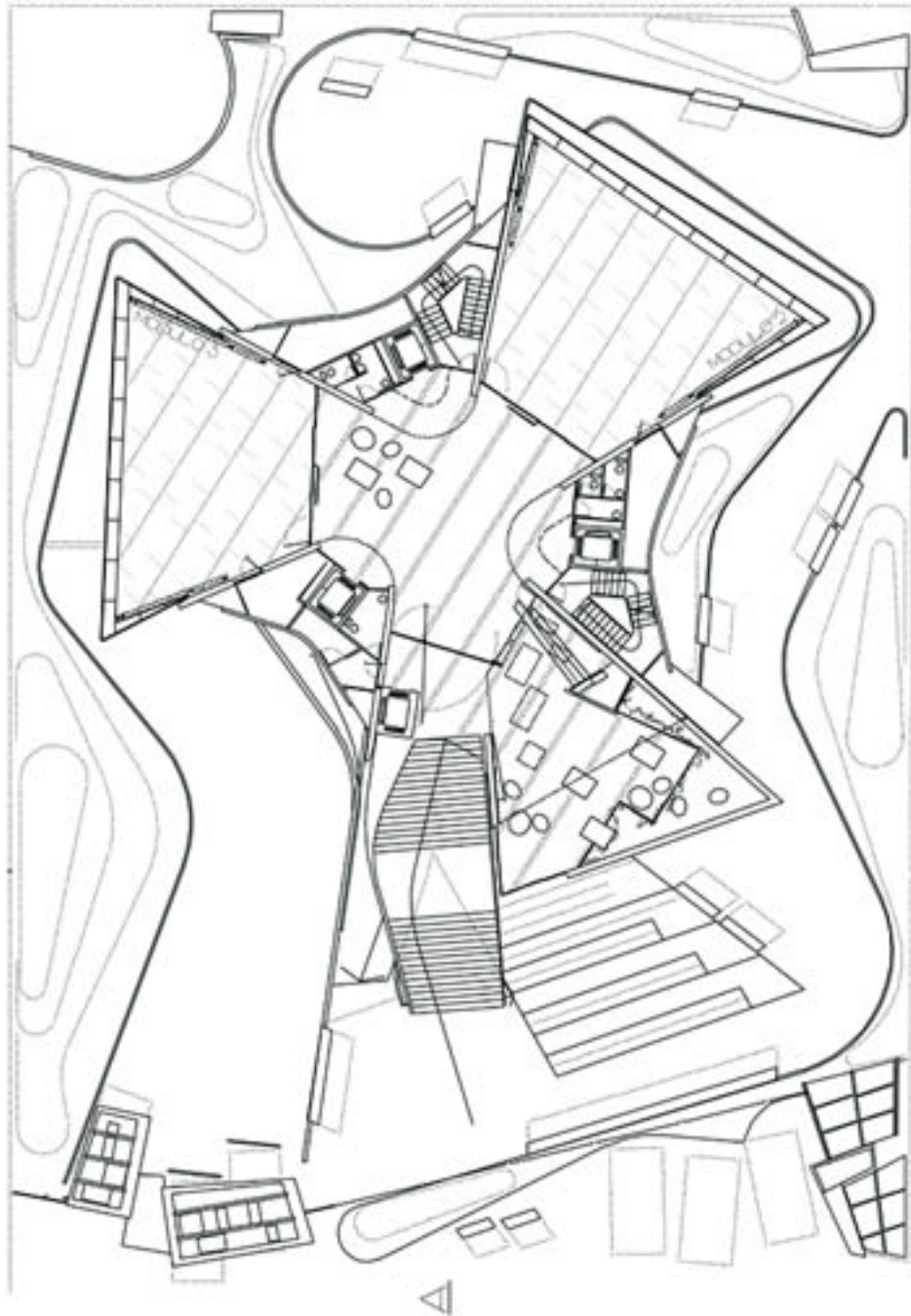
D/ BAJA

COTA +000/-150

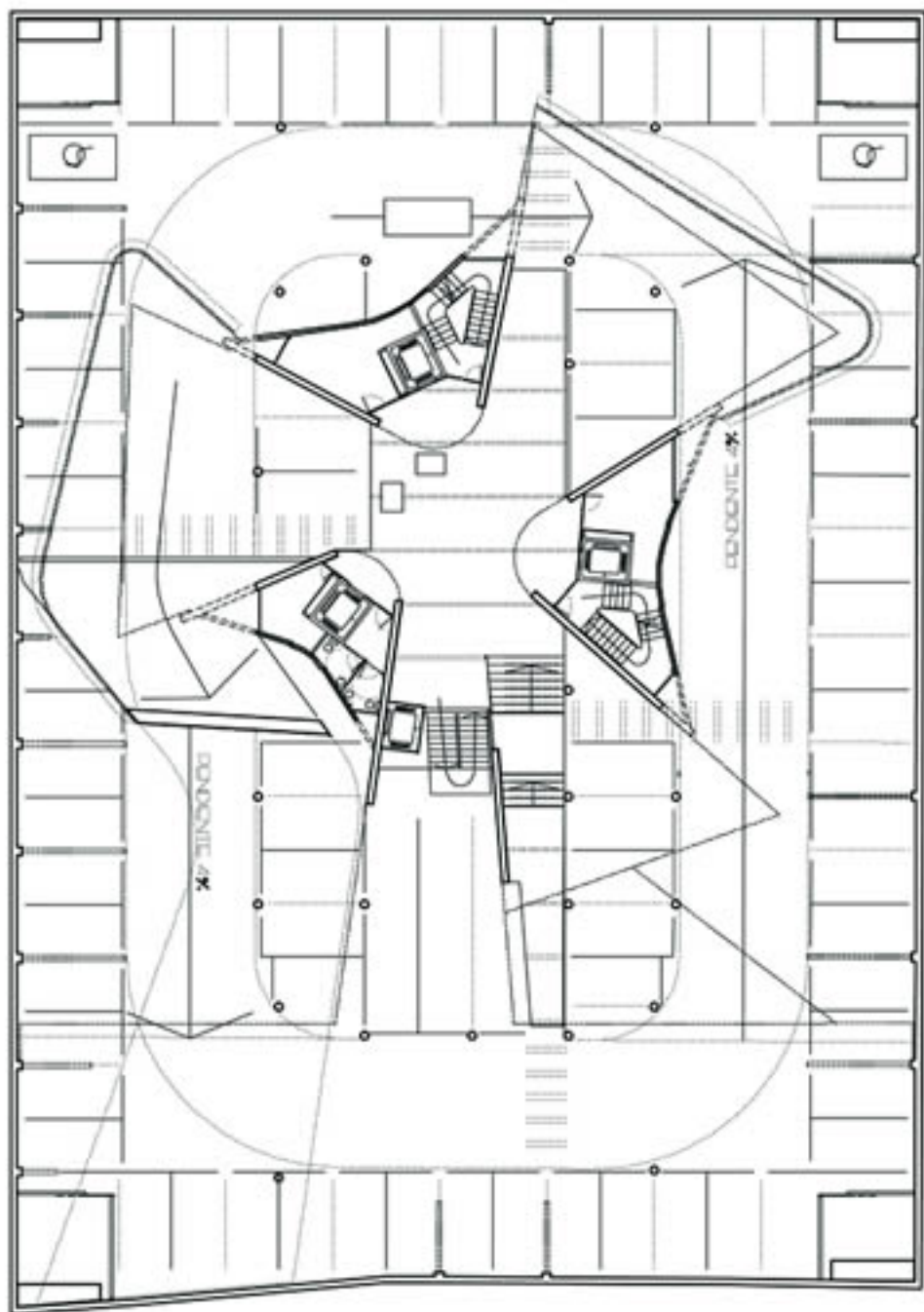
TORRE CUBE

BLVD. PUERTA DE HIERRO.

NORTE



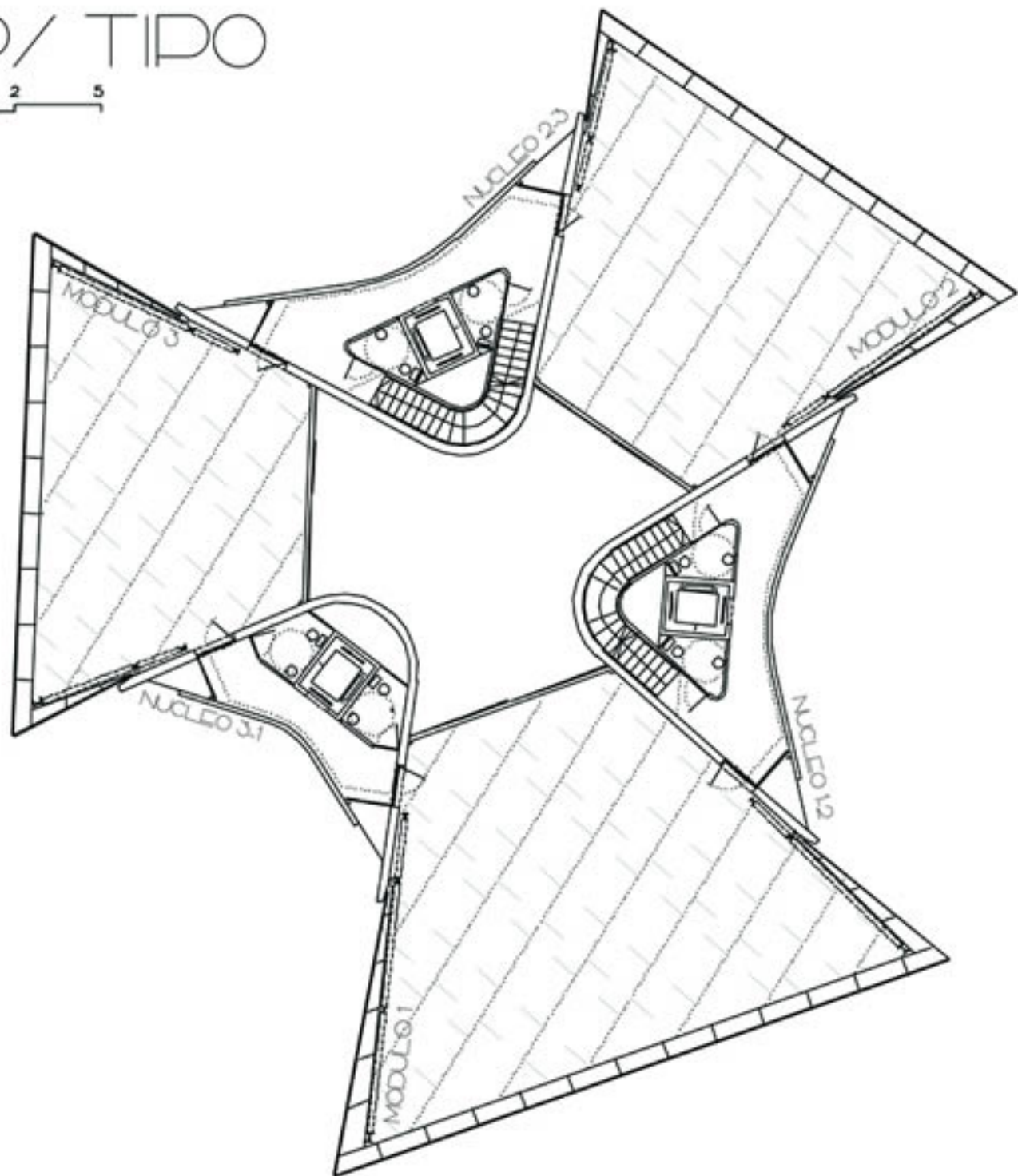
P/ VESTIBULO
COTA +400



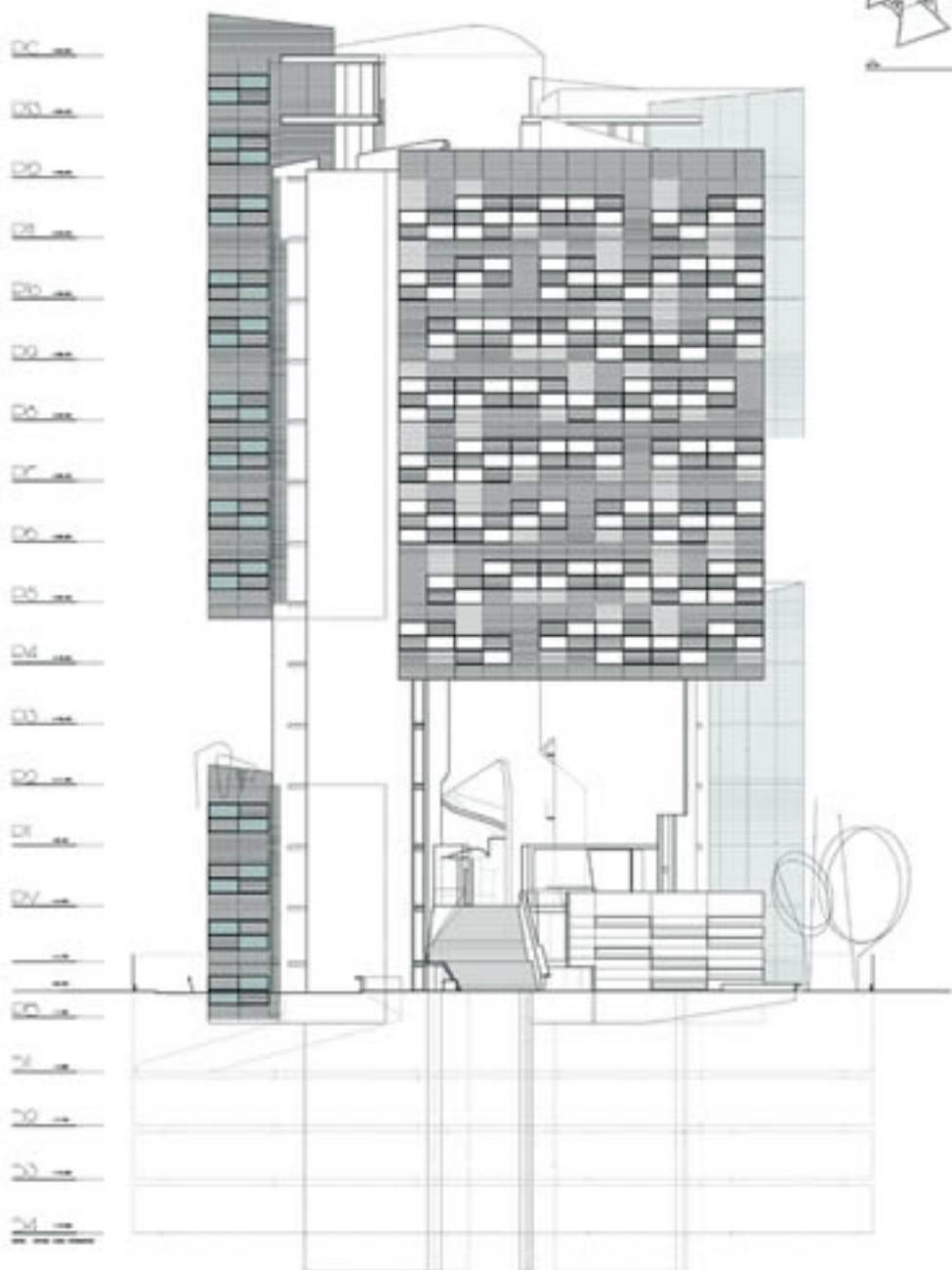
D/ SOTANO 1
COTA -405 / -020

P/ TIPO

0 2 5

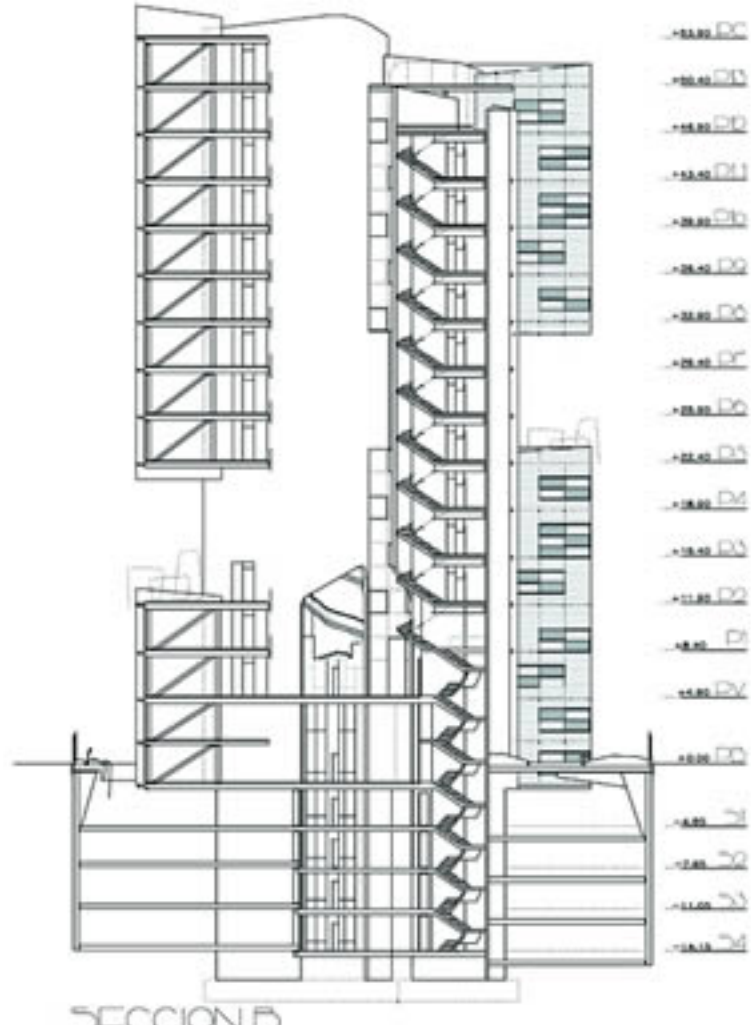
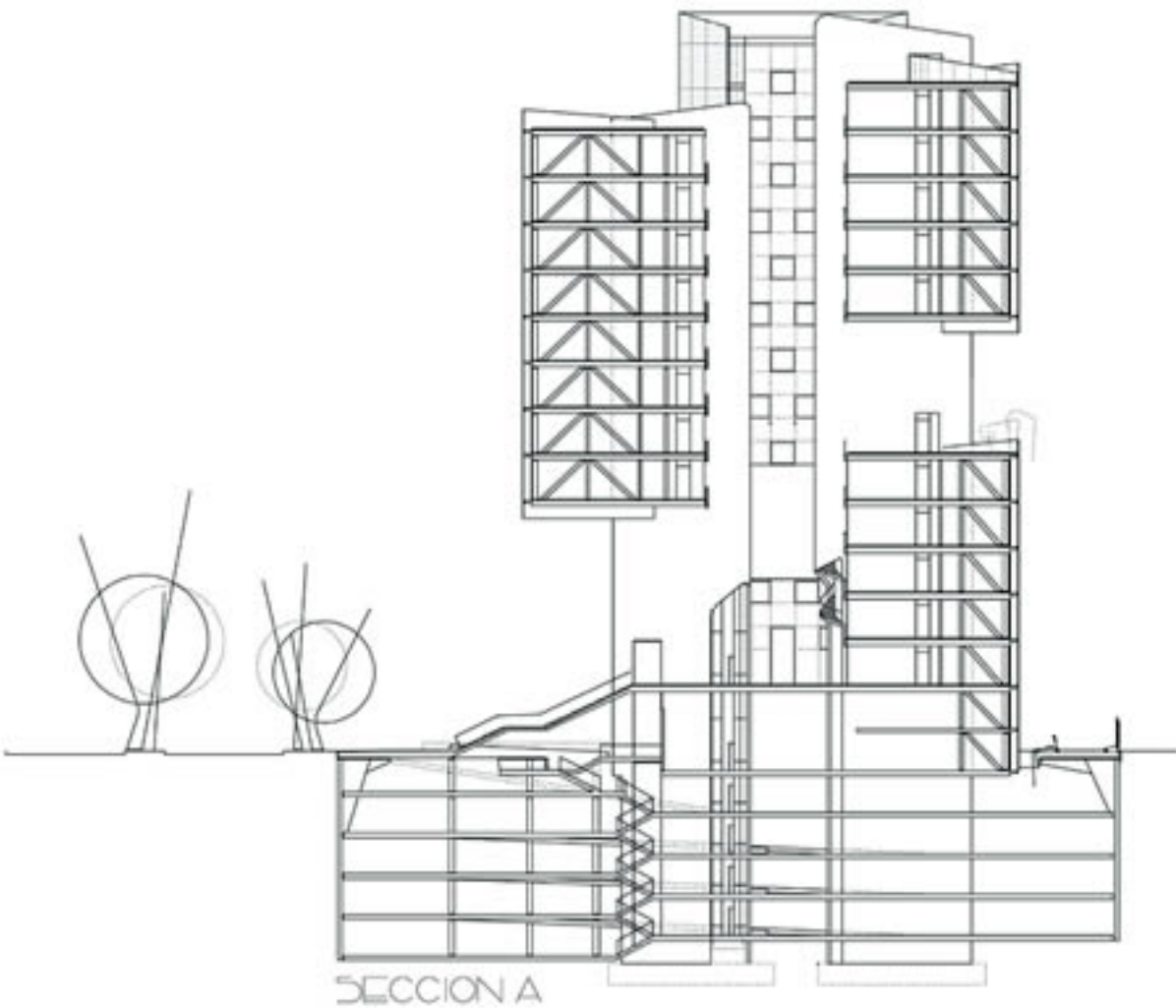


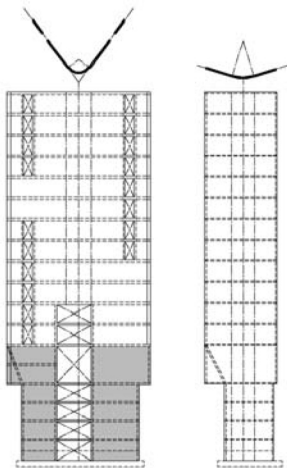
PUERTA DE HIERRO
GUADALAJARA MEXICO



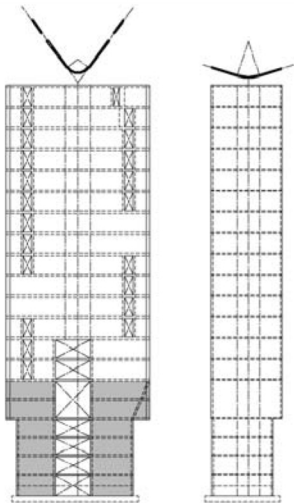
ALZADO A



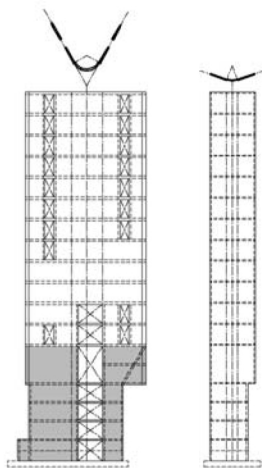




PANTALLAS
NÚCLEO 1-2
E:1/200

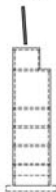


PANTALLAS
NÚCLEO 2-3
E:1/200

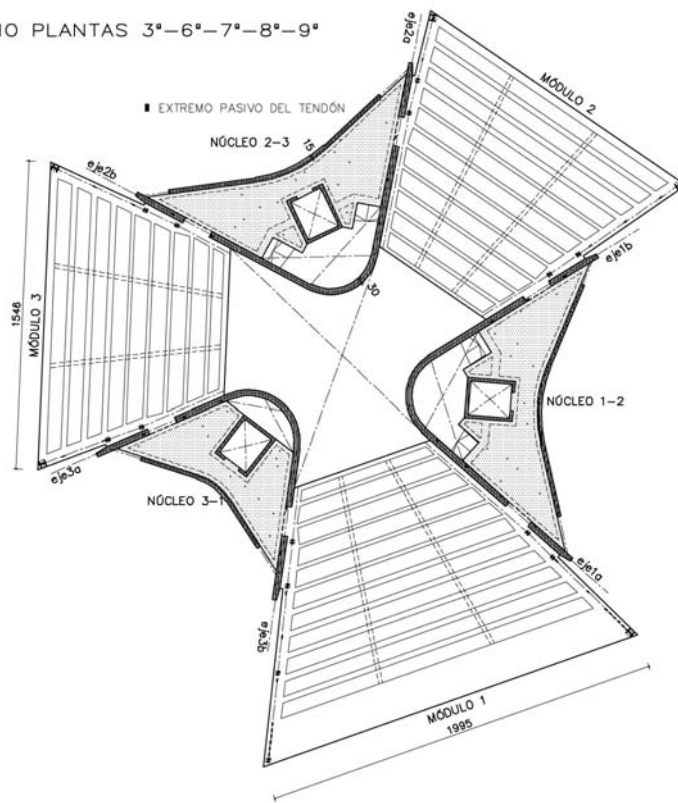


PANTALLAS
NÚCLEO 3-1
E:1/200

PANTALLAS
MÓDULO 1
E:1/200

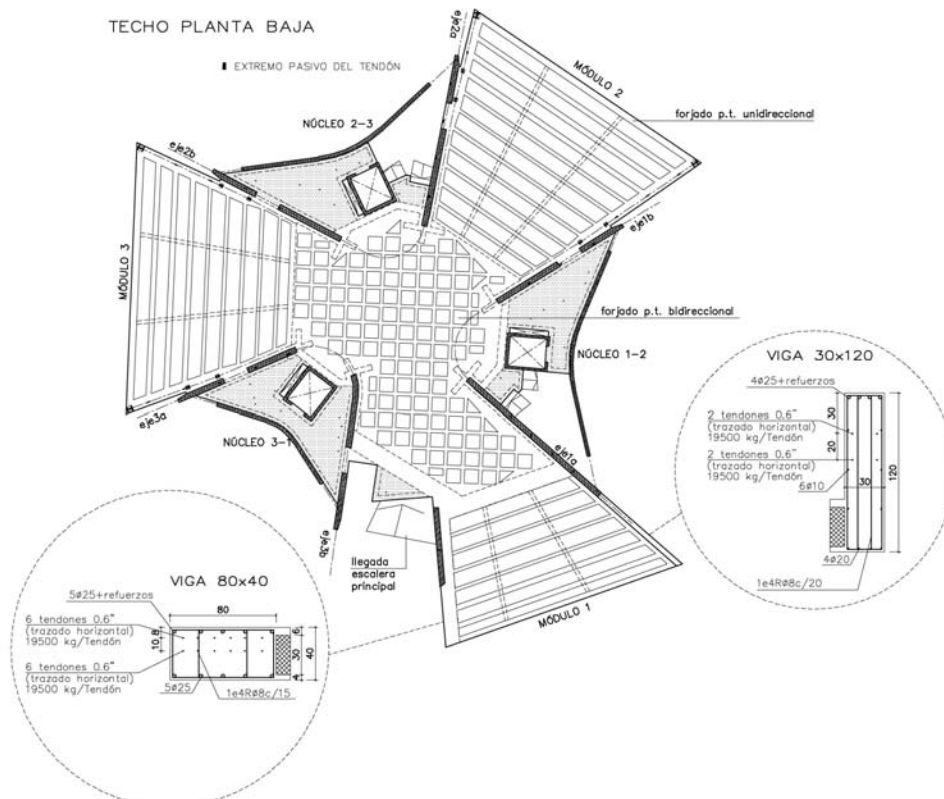


TECHO PLANTAS 3°-6°-7°-8°-9°



(a) Elementos postensados uni-direccionales para la planta sin el área de distribución central

TECHO PLANTA BAJA



(b) Losa bi-direccional para la planta con área de distribución central.

Figura 3. Planos estructurales para dos plantas tipo de la torre CUBE.