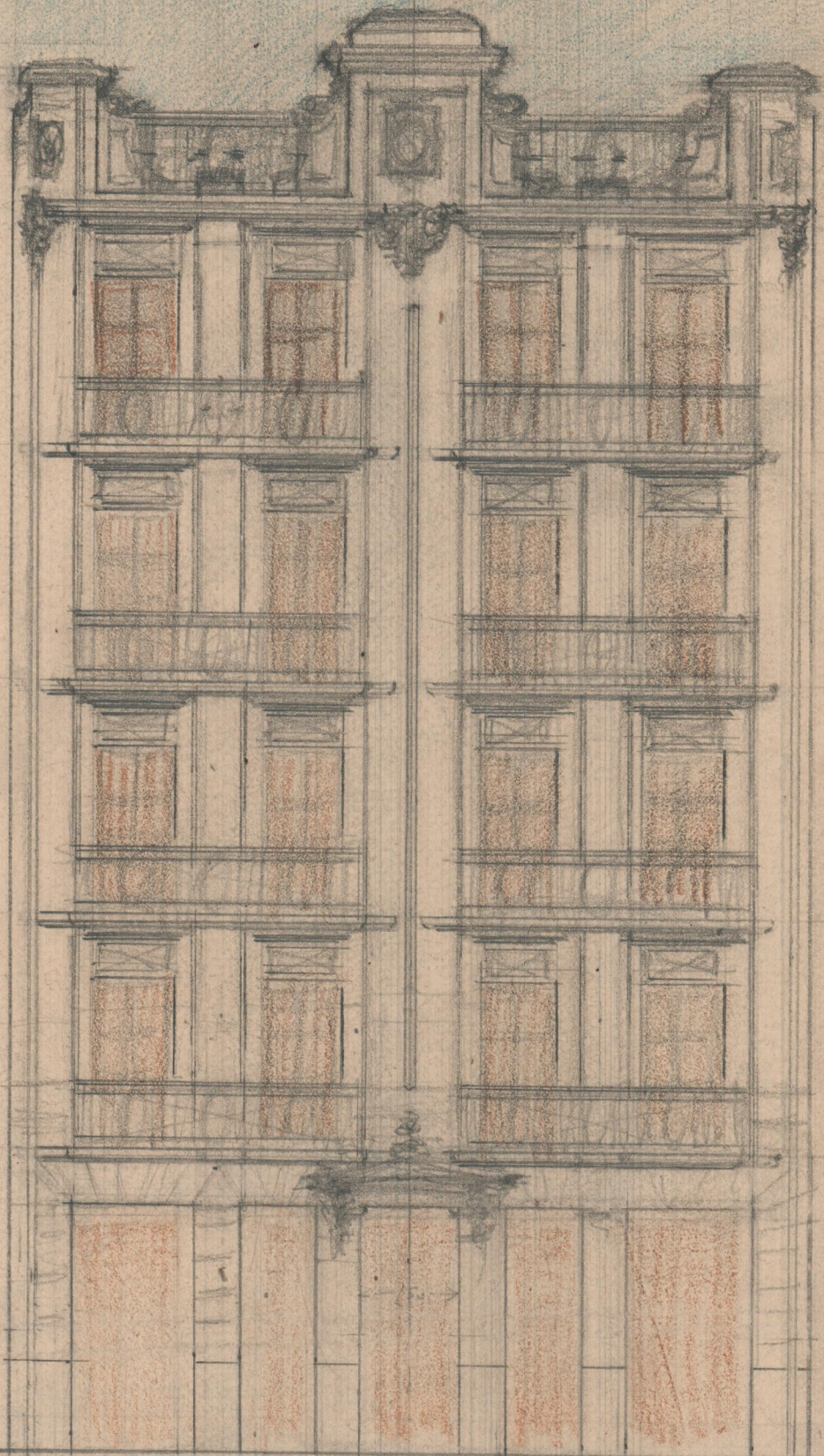


← 312 1/2 → ← 28 7/8 →  
 ← 125 × 125 × 125 × 125 × 100 × →

100  
 125  
 625  
 28 7/8  
 125  
 125  
 625  
 312 1/2  
 28 7/8  
 312 1/2  
 600



25  
 55  
 100  
 130  
 25  
 55  
 100  
 575  
 28 7/8  
 575  
 2  
 1150  
 575  
 190  
 65  
 312 1/2

15  
 12  
 30  
 15  
 180  
 2  
 360  
 6 1/8  
 420  
 180  
 360

← 200 × 50 × 112 × 55 7/8 →  
 113  
 190 × 65 × 115 × 66 2/3

190  
 190  
 1325  
 3125  
 325  
 100  
 80  
 45  
 28 7/8  
 113