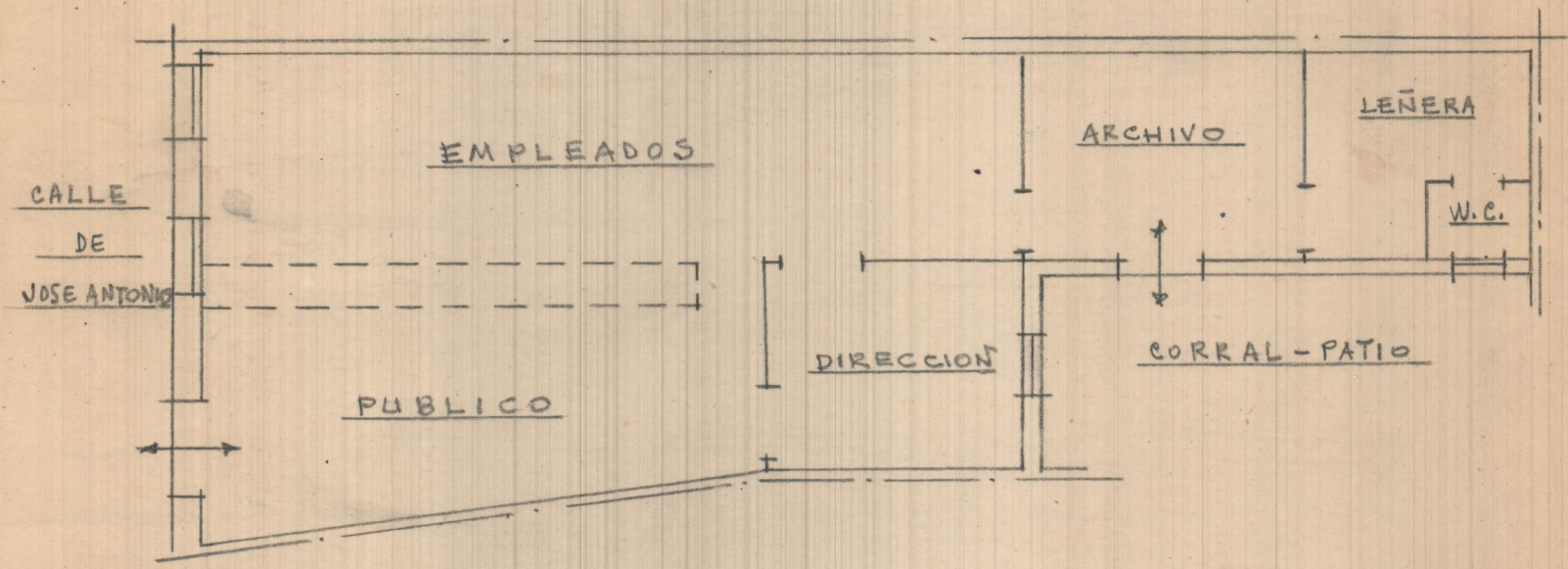


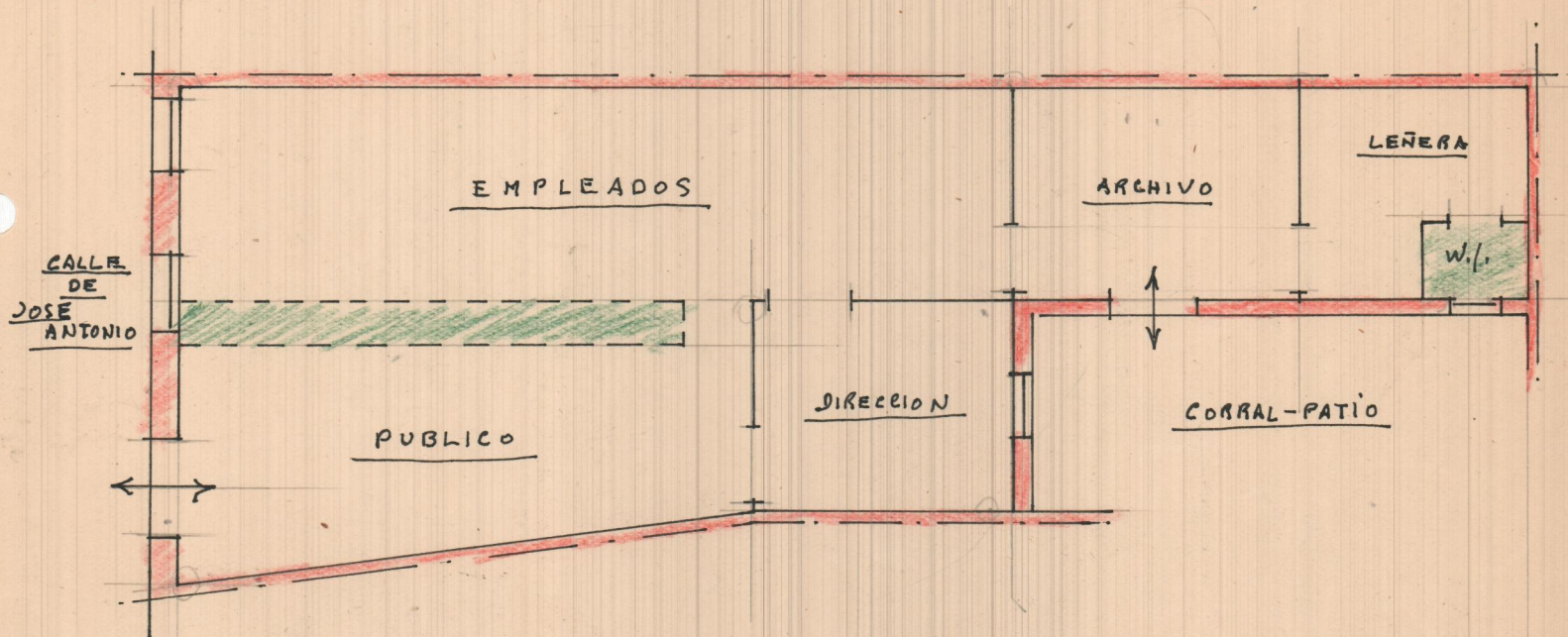
AYORA-OFICINA ACTUAL

CROQUIS - ESCALA = 1:100

Julio de 1959



AYORA - OFICINA ACTUAL - Julio-1959 -
CROQUIS - E. - 1:100



$$\begin{aligned} 280 \times 18'50 &= 51'80 \\ 3'00 \times 11'70 &= 35'10 \\ \frac{1}{2} 1'00 \times 8'00 &= 4'00 \\ \hline &90'96 \text{ m}^2 \text{ EDIFICADO} \\ 6'70 \times 2'80 &= 19'76 \text{ m}^2 \text{ CORRAL} \\ \hline &110'66 \text{ m}^2 \text{ Total} \end{aligned}$$